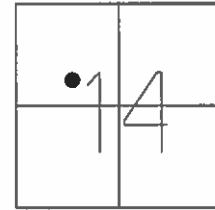


O.D.O.T. DISTRICT 2 SURVEY OFFICE (USE ONLY)

PERSONNEL _____ REFERENCE NO. 41 SHEET 7 OF 17
 NOTES HOMAN DATE 2/6/2013 ROUTE SR 2
 H.C. ROUSOS WEATHER SUNNY COUNTY WILLIAMS
 R.C. HOMAN TEMP. 16° TOWNSHIP PULASKI
 SECTION 14
T 6 N R 3 E

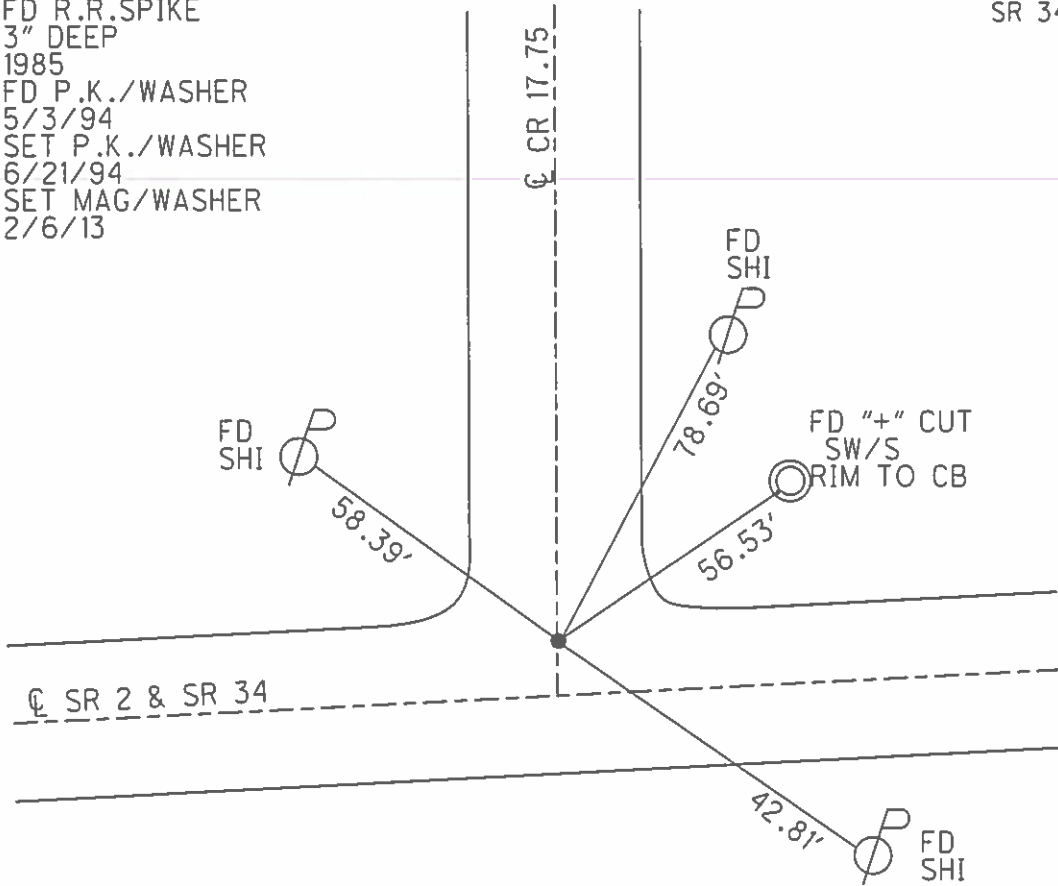
TYPE MONUMENT R.R.SPIKE
~~ON SURFACE~~ - BELOW 3"
 LEFT - ☉ PAV'T - ~~RIGHT~~ 2.8'
14.2 TO RT EDGE PAVEMENT
 S.L.M. 479+95



GRID: NORTHING: 666610.739 EASTING: 1422686.795

RECORD:
 FD R.R.SPIKE
 3" DEEP
 1985
 FD P.K./WASHER
 5/3/94
 SET P.K./WASHER
 6/21/94
 SET MAG/WASHER
 2/6/13

NOTE:
 SR 34 REF 40



O.D.O.T. DISTRICT 2 SURVEY OFFICE

PERSONNEL

REFERENCE NO. 41

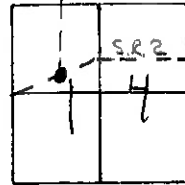
SHEET 15 OF 24

NOTES LOEHRKE
 H.C. CANTERBURY
 R.C. HERMILLER
VOGEL

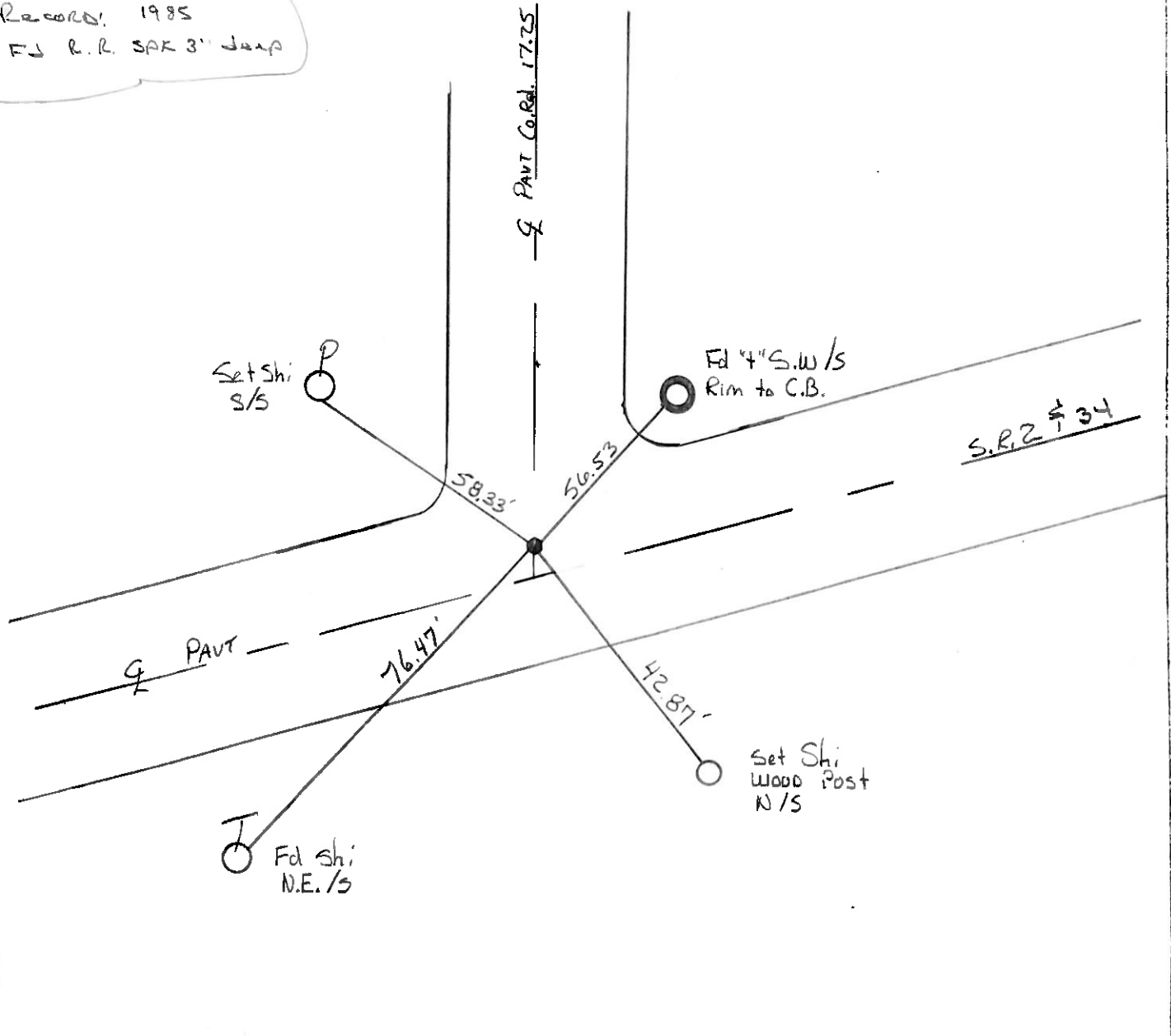
DATE 5-3-94
 WEATHER Nice
 TEMP. +78

ROUTE S.R. 2
 COUNTY Williams
 TOWNSHIP Pulaski
 SECTION 14
T 6 N R 3 E

TYPE MONUMENT P.K / WASHER SET P.K. washer 6-21-94 C.L.
 ON SURFACE - BELOW Yes
 LEFT - ~~C~~ PAV'T. - RIGHT 2.8'
14.2 TO R+ EDGE PAVEMENT
 S.L.M. 479+95



Record: 1985
 FJ R.R. 3" deep



County Williams S.R. #2

Date 6 Aug. 84

Township Poleski

Weather Cloudy

Section 14

Temp. 76°

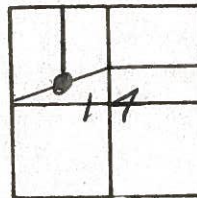
T N, R E

Personnel J. Stone

P. Neuser

R. Michaelak

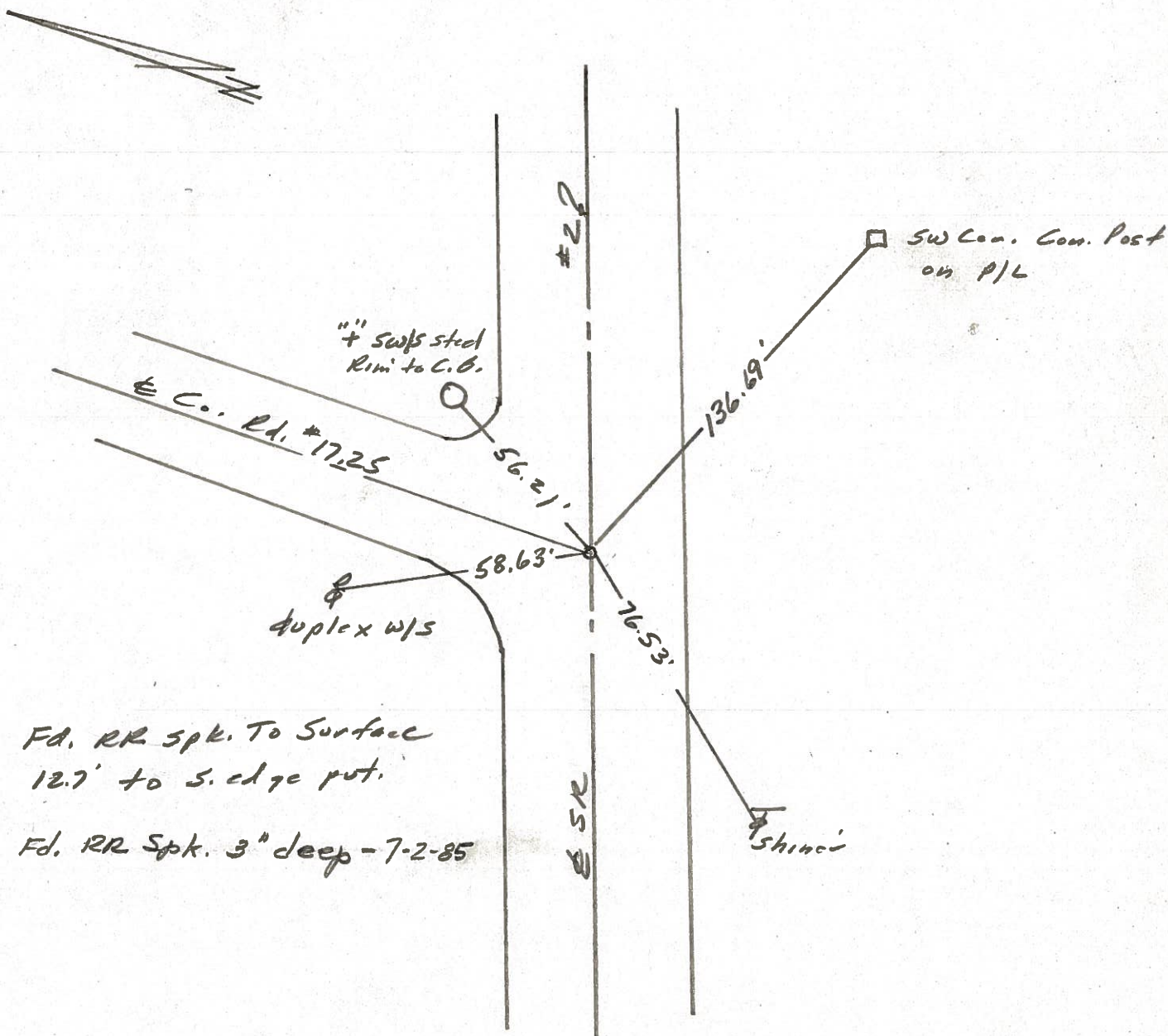
D. Cortis



41

SLM STA. 414+76

REF. NO. 41



PERSONNEL TITLE PERSONNEL TITLE

STREET NO. 5 of 13

Red Beach
W. Knappe

COUNTY Williams

DATE 3 JAN 77

S. R. #2

WEATHER

SEC. Brgd WIL-2-0765

TEMP.

DESCRIPTION

CONTROL POINTS

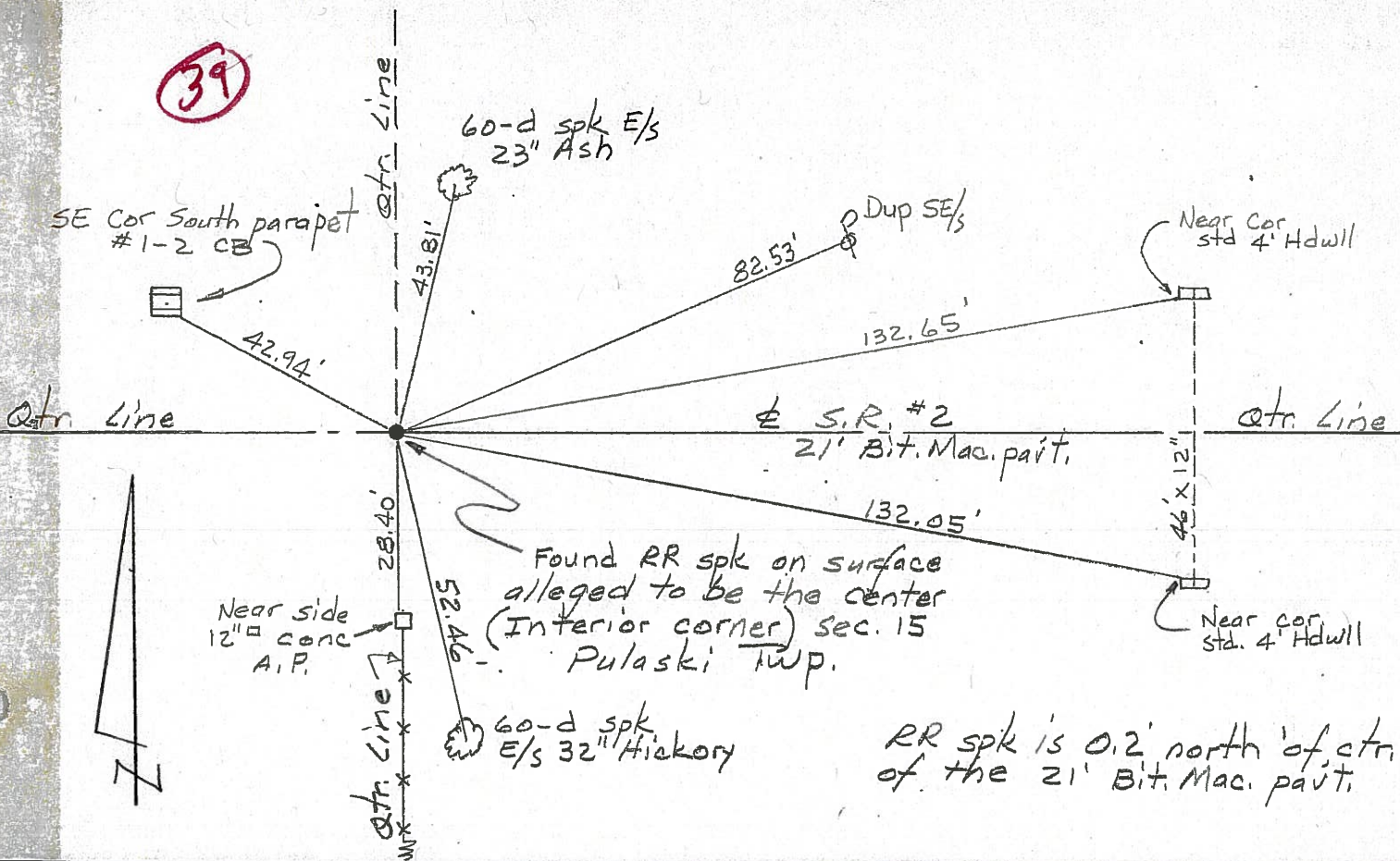
JOB NO.

LEFT

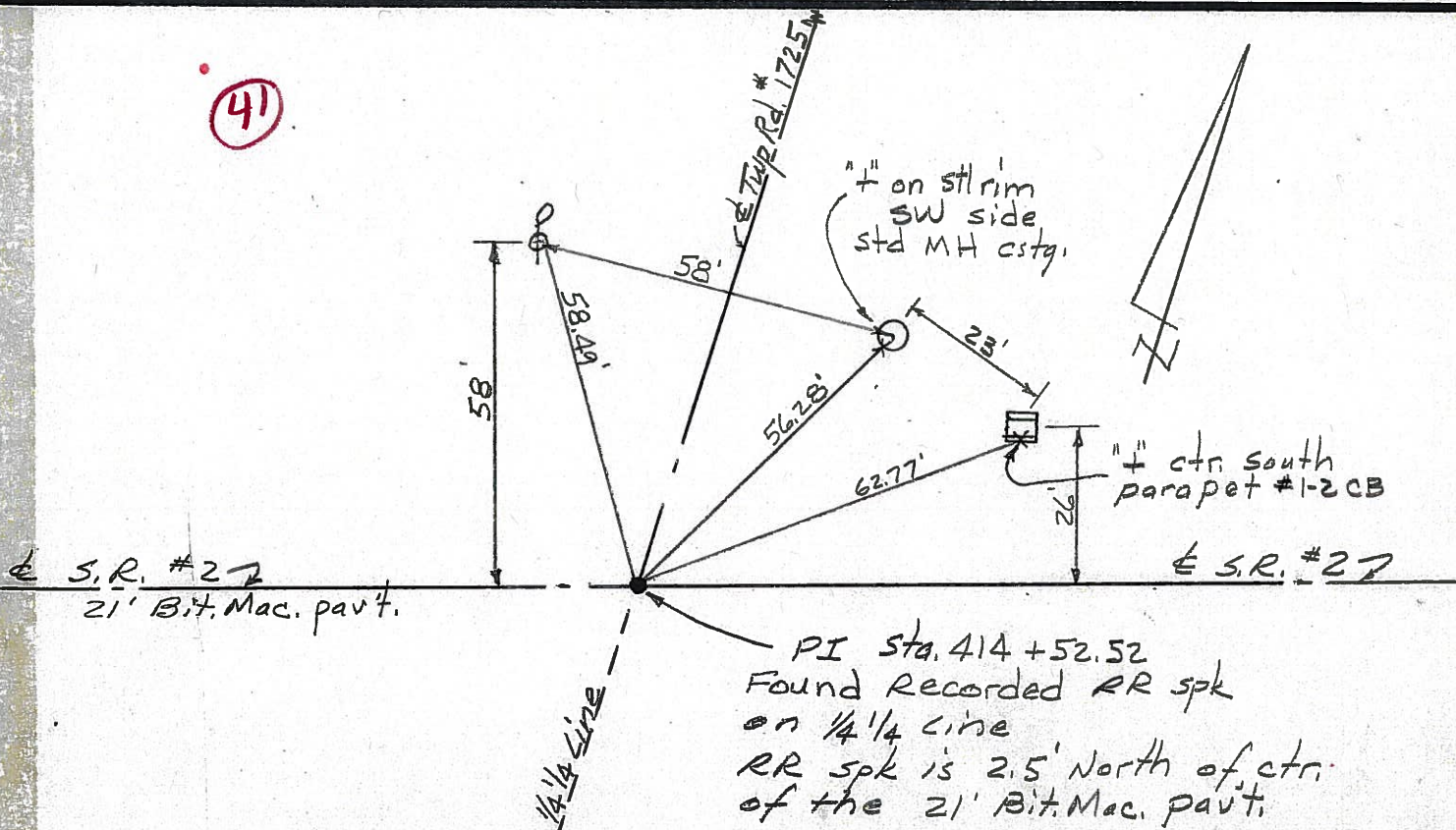
CENTER LINE

RIGHT

39



41



PERSONNEL TITLE PERSONNEL TITLE

Red Beach
W. Krape

COUNTY Williams

DATE Dec. 1976

S. R. #2

WEATHER

SEC. Bldg WIL-2-0765

TEMP.

DESCRIPTION

Alignment in NW 1/4 (Pt.) Sec. 14, Pulaski Twp.

JOB NO.

