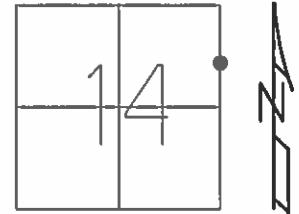


O.D.O.T. DISTRICT 2 SURVEY OFFICE (USE ONLY)

PERSONNEL _____ REFERENCE NO. 43 SHEET 9 OF 17
 NOTES HOMAN DATE 2/6/2013 ROUTE SR 2
 H.C. ROUSOS WEATHER SUNNY COUNTY WILLIAMS
 R.C. HOMAN TEMP. 16° TOWNSHIP PULASKI
 _____ SECTION 16
 _____ T 6 N R 3 E

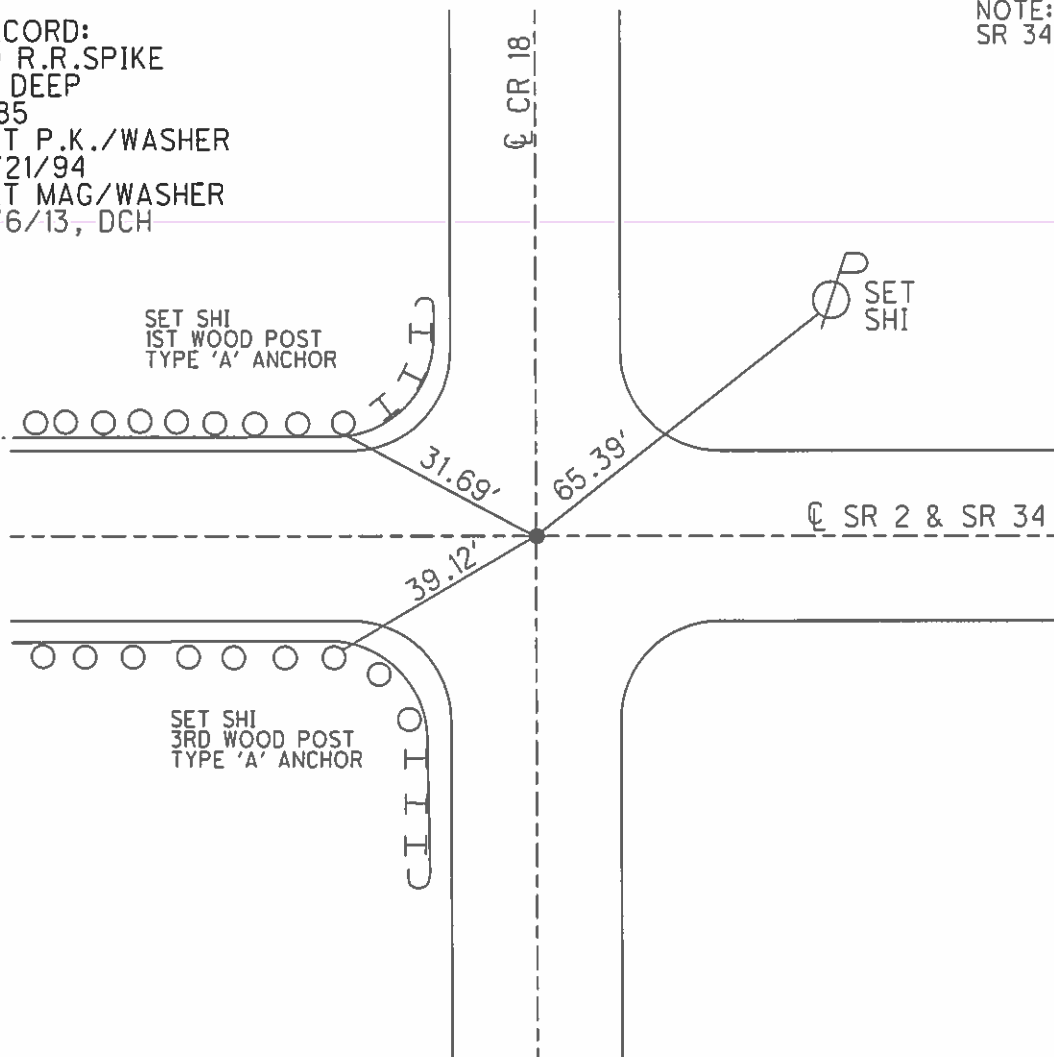
TYPE MONUMENT RR SPIKE
~~ON SURFACE~~ - BELOW 2"
 LEFT - ☉ PAV'T - RIGHT ON
- TO - EDGE PAVEMENT
 S.L.M. 516+44



GRID: NORTHING: 667033.689 EASTING: 1426279.179

RECORD:
 FD R.R. SPIKE
 2" DEEP
 1985
 SET P.K./WASHER
 6/21/94
 SET MAG/WASHER
 2/6/13, DCH

NOTE:
 SR 34 REF42



O.D.O.T. DISTRICT 2 SURVEY OFFICE

PERSONNEL

REFERENCE NO. 43

SHEET 17 OF 24

NOTES LOHRKE

H.C. CANTERBURY

DATE 5-2-94

ROUTE S.R. 2

R.C. HERMILLER

WEATHER Nice

COUNTY Williams

Vogel

TEMP. +78

TOWNSHIP Pulaski

SECTION 14

T. 6 N. R. 3 E

TYPE MONUMENT P.R. SPIKE

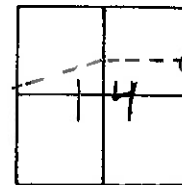
Set P.K. / WASHER
6-21-94

ON SURFACE - BELOW 2 1/2"

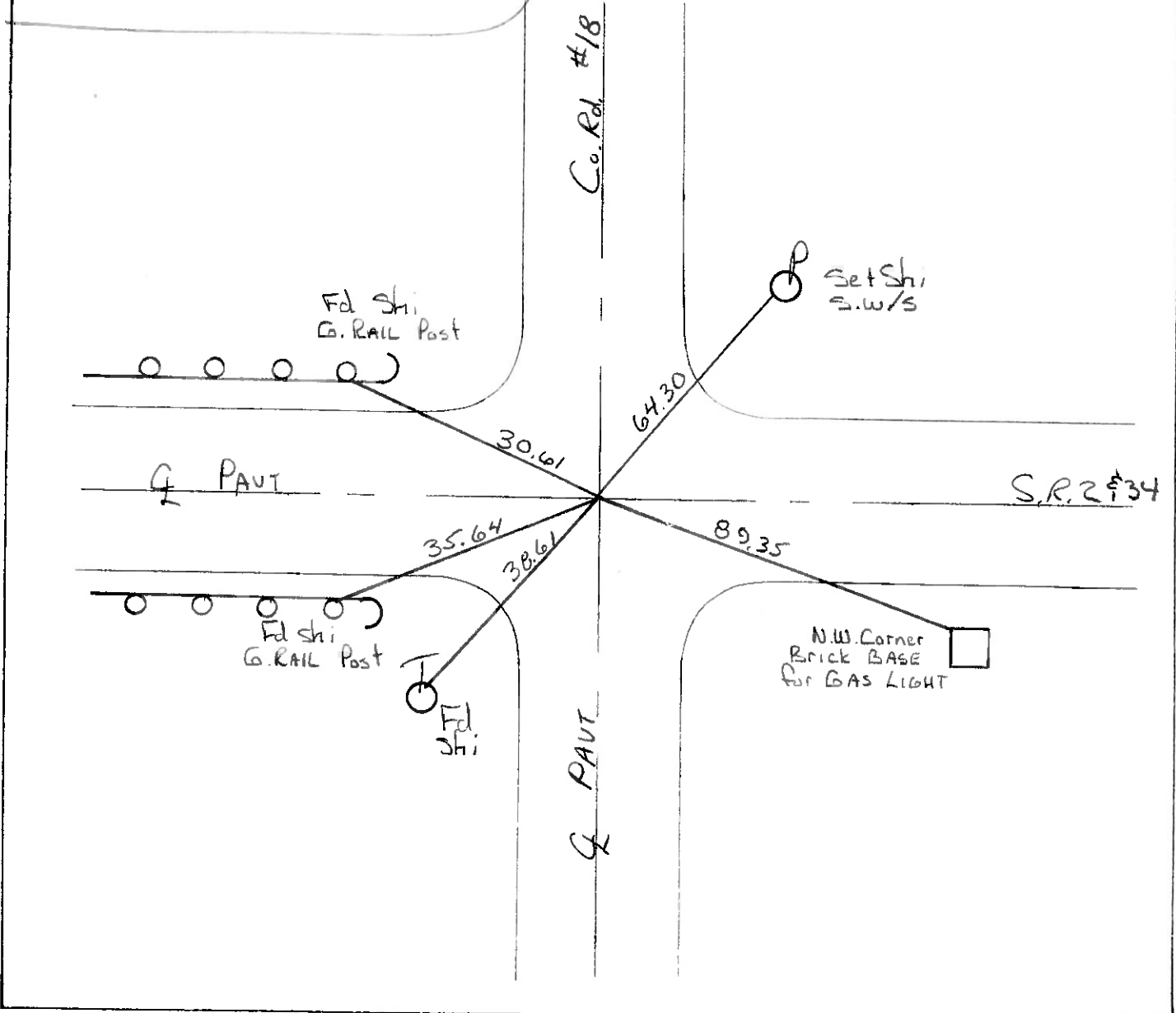
LEFT - & PAVT. - RIGHT Yes

TO EDGE PAVEMENT

S.L.M. 516+44



Records: 1985 FJ RR spk 2" deep



County Williams S.R. #2

Date 6 Aug. 84

Township Pulaski

Weather Hazy

Section 14-13

Temp. 77°

T N, R E

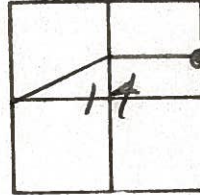
Personnel I. Stone

P. Neuser

R. Michalak

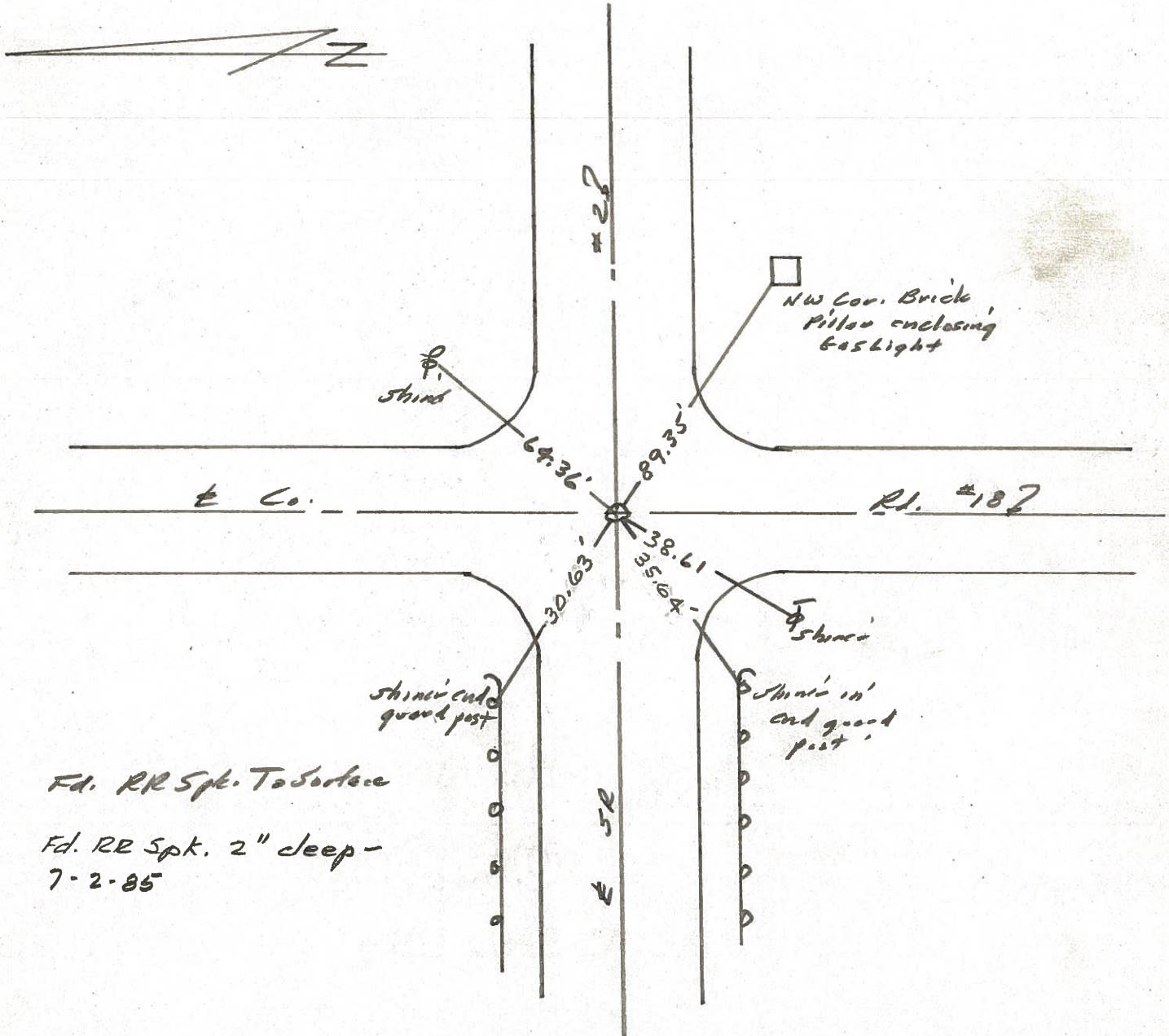
D. Luntis

43



SLM STA. 451 + 25

REF. No. 43



Fd. RR Spk. To Surface

Fd. RR Spk. 2" deep -
7-2-85