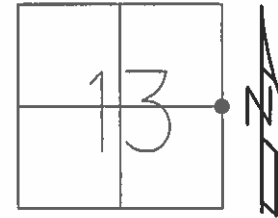


O.D.O.T. DISTRICT 2 SURVEY OFFICE (USE ONLY)

PERSONNEL \_\_\_\_\_ REFERENCE NO. 47 SHEET 11 OF 17  
NOTES HOMAN DATE 2/6/2013 ROUTE SR 2  
H.C. ROUSOS WEATHER SUNNY COUNTY WILLIAMS  
R.C. HOMAN TEMP. 28° TOWNSHIP PULASKI  
SECTION 13  
T 6 N R 3 E

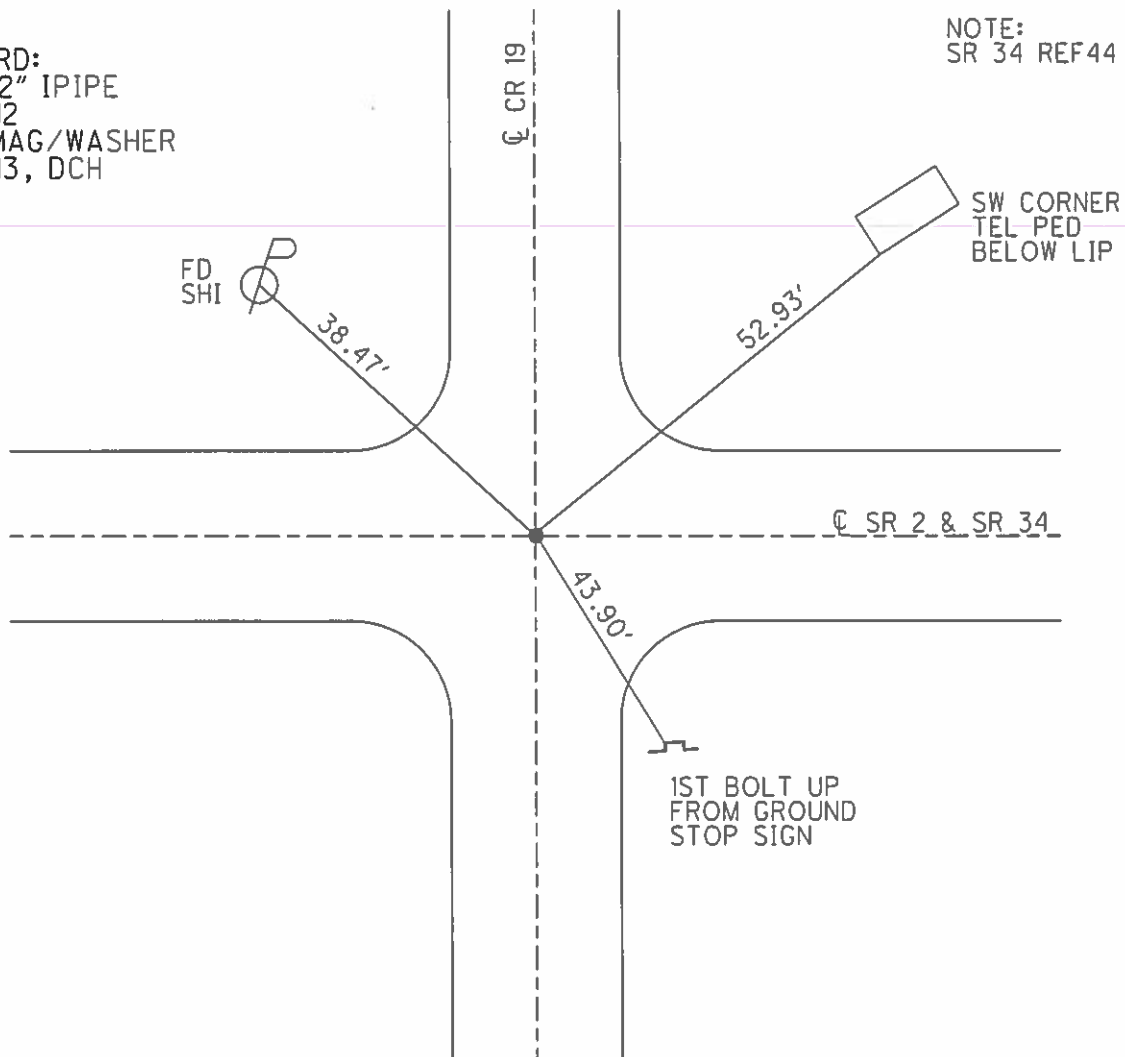
TYPE MONUMENT 1/2" IPIPE  
~~ON SURFACE~~ - BELOW 3"  
LEFT - ☉ PAV'T - RIGHT ON  
- TO - EDGE PAVEMENT  
S.L.M. 573+74



GRID: NORTHING: 665950.510 EASTING: 1431725.057

RECORD:  
FD 1/2" IPIPE  
7/9/12  
SET MAG/WASHER  
2/6/13, DCH

NOTE:  
SR 34 REF44



# O.D.O.T. DISTRICT 2 SURVEY OFFICE

PERSONNEL

REFERENCE NO. 47 SHEET 19 OF 24

NOTES LOEHKE

H.C. CANTERBURY

R.C. HORNILLER

VOGEL

DATE 5-3-94

WEATHER Nice

TEMP. +78

ROUTE SR 2

COUNTY Williams

TOWNSHIP PULASKI

SECTION 13

T6 N R 3 E

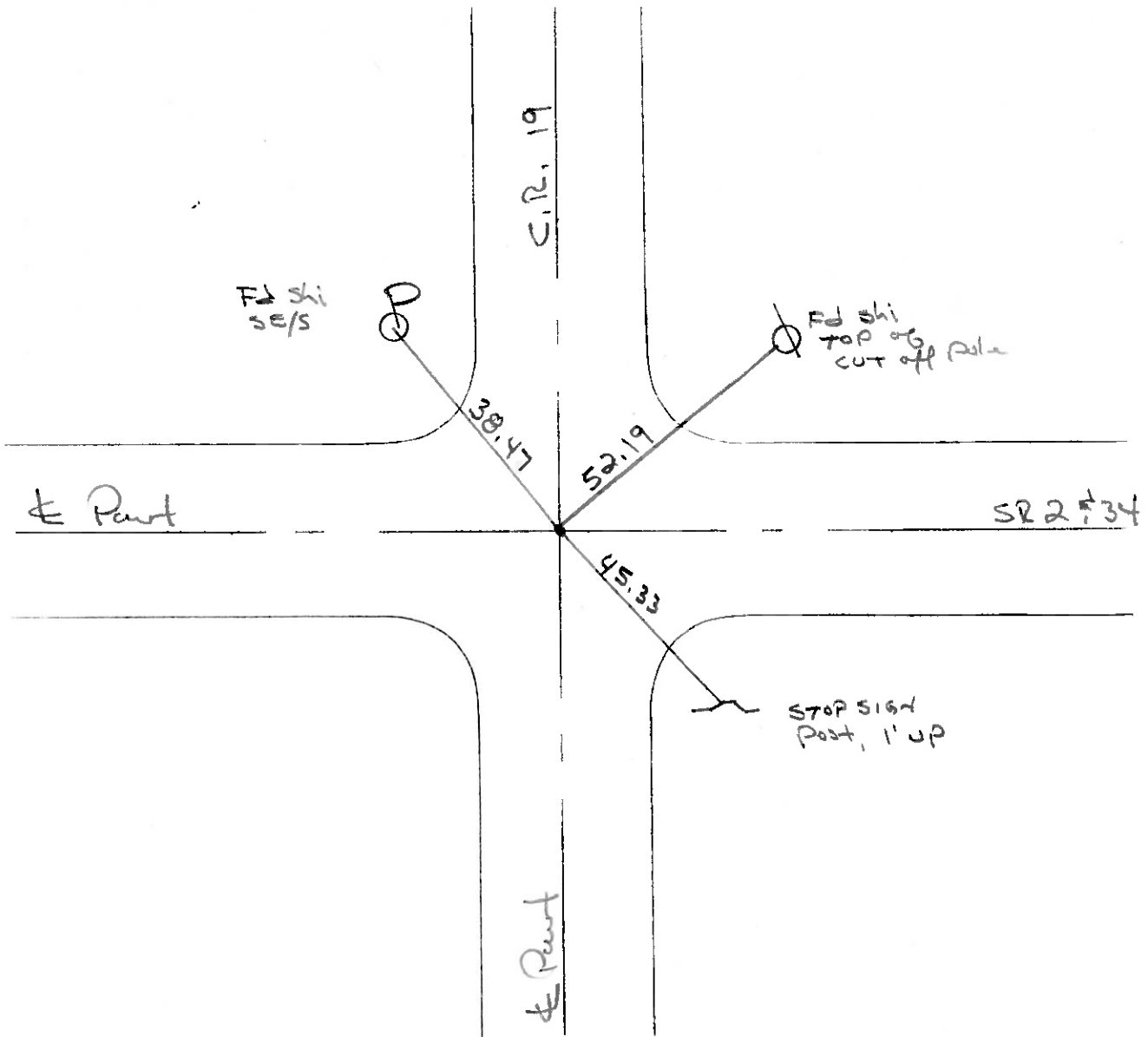
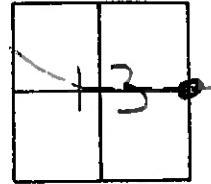
TYPE MONUMENT 1/2" I. PIPE

~~ON SURFACE~~ - BELOW 3"

~~LEFT~~ - & PAV'T. - ~~RIGHT~~ yes

TO EDGE PAVEMENT

S.L.M. 573 + 74



County Williams S.R. #2

Date 6 Aug. 84

Township Polaski - Springfield

Weather Hazy

Section 13 18

Temp. 78°

T.N, R.E

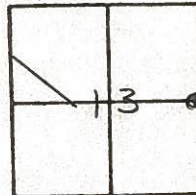
Personnel P. Stone

P. Neuse

R. Michalak

D. Curtis

47



SLM STA. 508+55

REF. NO. 47

