

O.D.O.T. DISTRICT 2 SURVEY OFFICE (USE ONLY)

PERSONNEL \_\_\_\_\_ REFERENCE NO. 50 B SHEET 3 OF 22

NOTES LEU DATE 5/22/2017 ROUTE SR 2  
H.C. HOMAN WEATHER MILD COUNTY WILLIAMS  
R.C. LEU TEMP. 53 TOWNSHIP SPRINGFIELD  
SECTION 16  
T 6 N R 4 E

TYPE MONUMENT LG.R.R.SPIKE

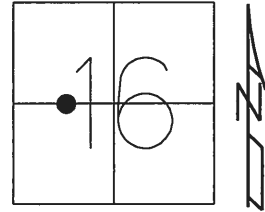
ON SURFACE - ~~BELOW~~ ON \_\_\_\_\_

~~LEFT~~ - ☉ PAV'T - RIGHT 3.5'

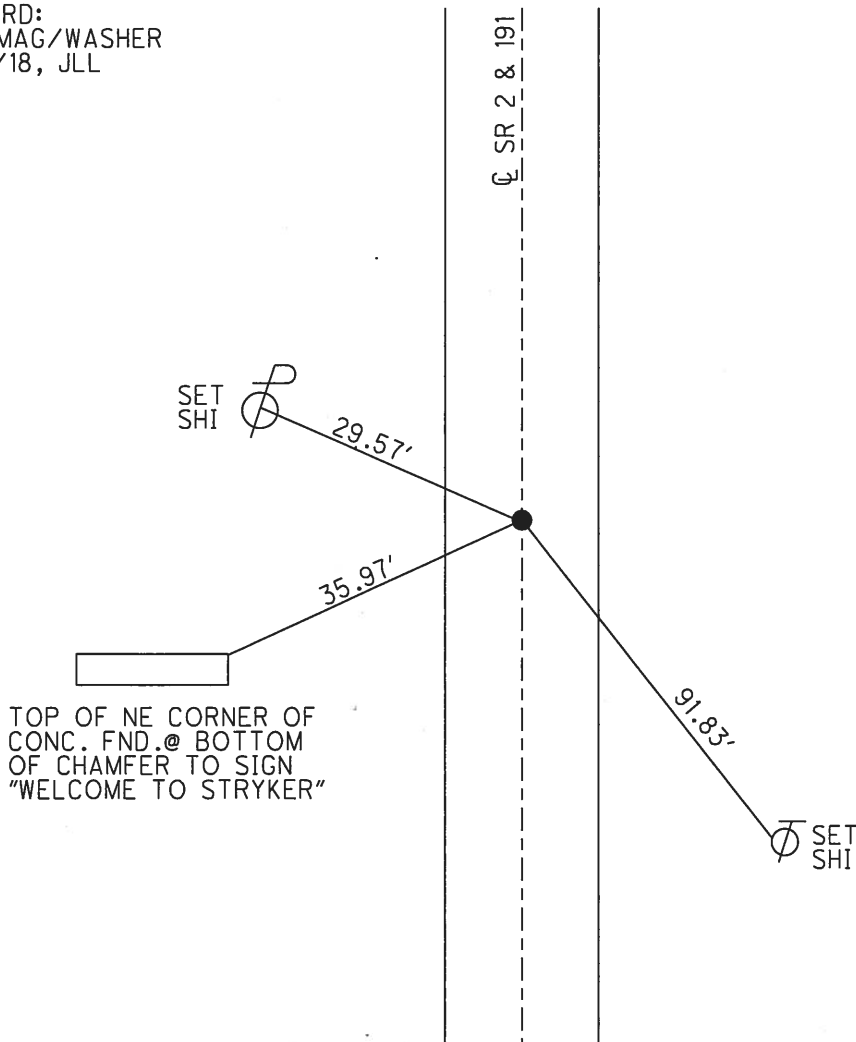
- TO - EDGE PAVEMENT

S.L.M. 731+41.76

GRID: NORTHING: 668384.701 EASTING: 1444154.809



RECORD:  
SET MAG/WASHER  
4/17/18, JLL



TOP OF NE CORNER OF  
CONC. FND. @ BOTTOM  
OF CHAMFER TO SIGN  
"WELCOME TO STRYKER"