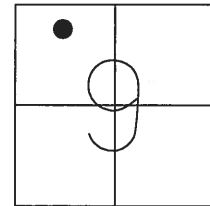


O.D.O.T. DISTRICT 2 SURVEY OFFICE (USE ONLY)

PERSONNEL _____ REFERENCE NO. 52 A SHEET 5 OF 22
 NOTES LEU DATE 5/22/2017 ROUTE SR 2
 H.C. HOMAN WEATHER MILD COUNTY WILLIAMS
 R.C. LEU TEMP. 53°F TOWNSHIP SPRINGFIELD
 SECTION 9
 T 6 N R 4 E

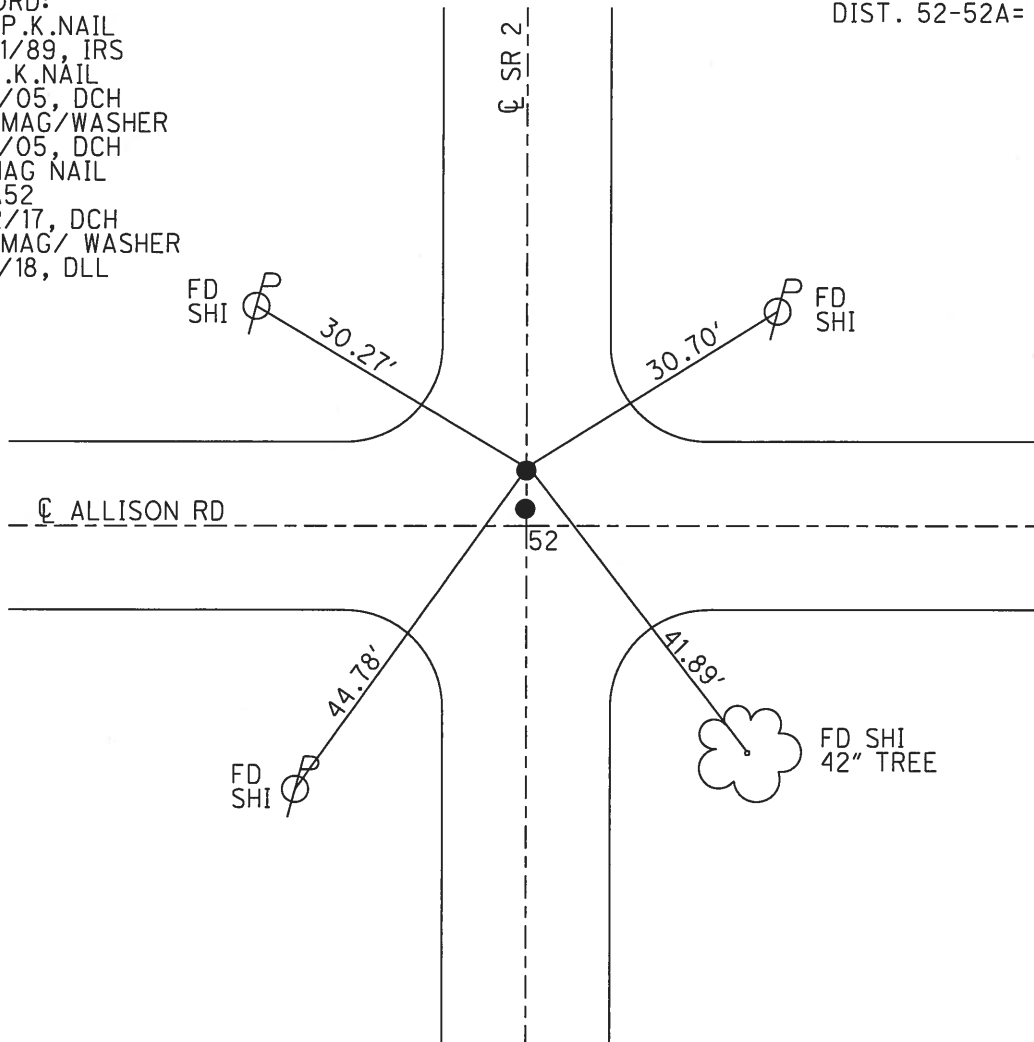
TYPE MONUMENT MAG NAIL
 ON SURFACE - ~~BELOW~~ ON
 LEFT - ℄ PAV'T - ~~RIGHT~~ 0.3'
- TO - EDGE PAVEMENT
 S.L.M. 778+47.42



GRID: NORTHING: 673089.593 EASTING: 1444141.227

RECORD:
 SET P.K.NAIL
 10/31/89, IRS
 FD P.K.NAIL
 4/14/05, DCH
 SET MAG/WASHER
 6/14/05, DCH
 FD MAG NAIL
 REFA52
 5/22/17, DCH
 SET MAG/ WASHER
 4/17/18, DLL

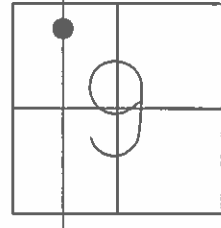
DIST. 52-52A= 0.65'



O.D.O.T. DISTRICT 2 SURVEY OFFICE (USE ONLY)

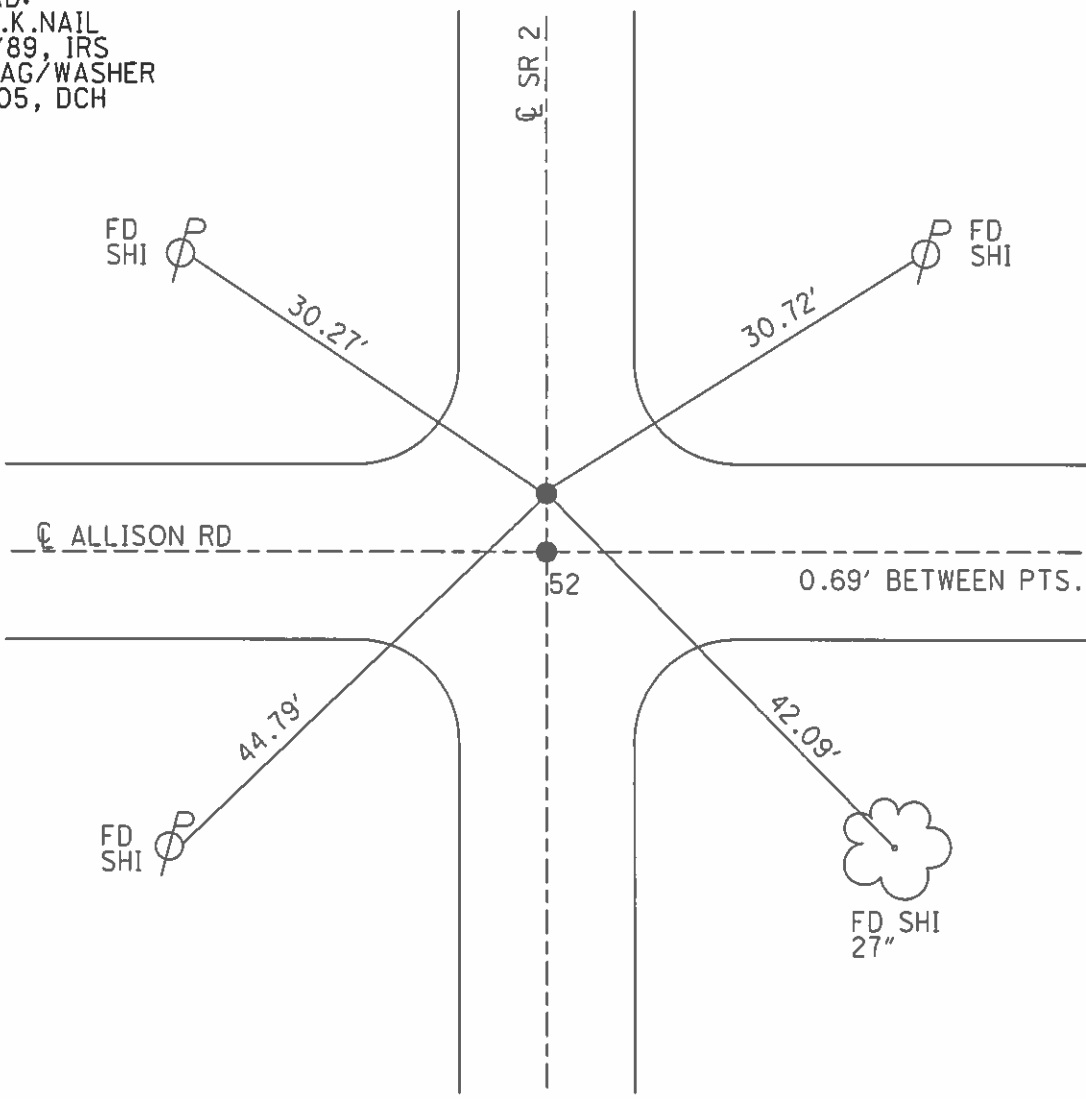
PERSONNEL _____ REFERENCE NO. 52 A SHEET 4 OF 21
 NOTES HOMAN DATE 4/14/05 ROUTE SR 2
 H.C. BARNHISEL WEATHER SUNNY COUNTY WILLIAMS
 R.C. KOLEMAINEN TEMP. 55° TOWNSHIP SPRINGFIELD
 _____ SECTION 9
 _____ T 6 N R 4 E

TYPE MONUMENT P.K.NAIL
 ON SURFACE - ~~BELOW~~ ON _____
 LEFT - ☉ PAV'T - RIGHT ON _____
 - TO - EDGE PAVEMENT
 S.L.M. 778+61.72



GRID: NORTHING: _____ EASTING: _____

RECORD:
 SET P.K.NAIL
 10/31/89, IRS
 SET MAG/WASHER
 6/14/05, DCH



O.D.O.T. DISTRICT 2 SURVEY OFFICE

PERSONNEL _____

REFERENCE NO. 52-A

SHEET 3 OF _____

NOTES D. CURTIS

H.C. J. HOUSEHOLDER DATE 10-13-88

R.C. _____ WEATHER MILD

_____ TEMP. 55°

ROUTE S.R. #2

COUNTY WILLIAMS

TOWNSHIP SPRINGFIELD

SECTION 9

T _____ R _____

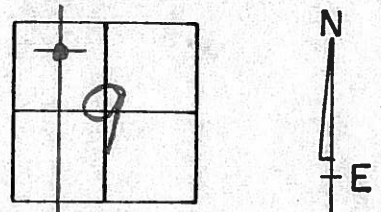
TYPE MONUMENT P.K. NAILS

ON SURFACE - ~~BELOW~~ ON SURFACE

LEFT- ☉ PAV'T. - RIGHT ☉ PAV'T

_____ TO _____ EDGE PAVEMENT

S.L.M. 713+53, 713+53.72



Set PK Nails 10/31/89 IRS

