

O.D.O.T. DISTRICT 2 SURVEY OFFICE (USE ONLY)

PERSONNEL \_\_\_\_\_ REFERENCE NO. 52 C SHEET 7 OF 22

NOTES HOMAN DATE 4/14/05 ROUTE SR 2

H.C. BARNHISEL WEATHER SUNNY COUNTY WILLIAMS

R.C. KOLEMAINEN TEMP. 55°F TOWNSHIP SPRINGFIELD

SECTION 4

T 6 N R 4 E

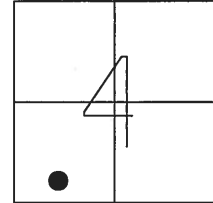
TYPE MONUMENT P.K./WASHER

ON SURFACE - ~~BELOW~~ ON \_\_\_\_\_

LEFT - ☉ PAV'T - RIGHT ON \_\_\_\_\_

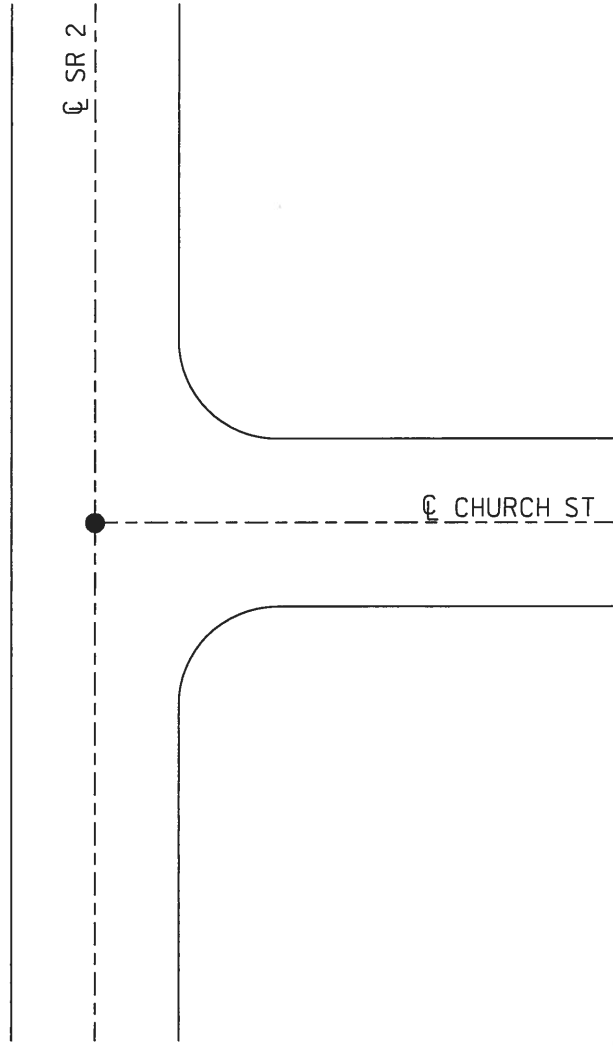
- TO - EDGE PAVEMENT

S.L.M. 787+81



GRID: NORTHING: \_\_\_\_\_ EASTING: \_\_\_\_\_

DNF @ 3" DOWN  
4/12/05  
DNF-5/22/2017  
NO TIES REMAINING

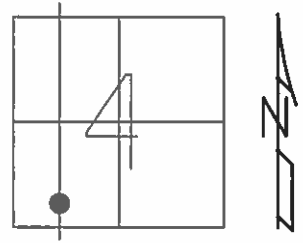


O.D.O.T. DISTRICT 2 SURVEY OFFICE (USE ONLY)

PERSONNEL \_\_\_\_\_ REFERENCE NO. 52 C SHEET 6 OF 21

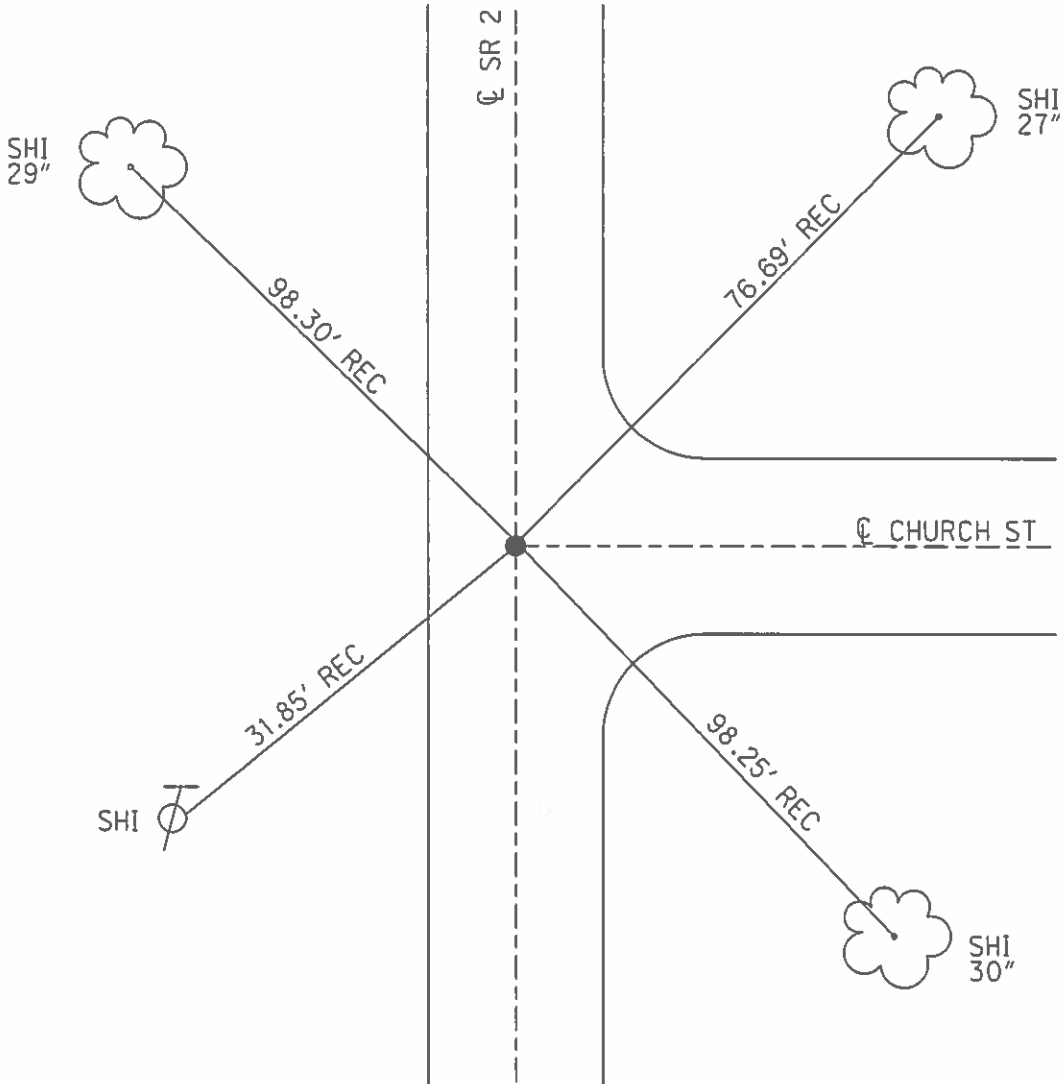
NOTES HOMAN \_\_\_\_\_ DATE 4/14/05 ROUTE SR 2  
 H.C. BARNHISEL \_\_\_\_\_ WEATHER SUNNY COUNTY WILLIAMS  
 R.C. KOLEMAINEN \_\_\_\_\_ TEMP. 55° TOWNSHIP SPRINGFIELD  
 \_\_\_\_\_ SECTION 4  
 \_\_\_\_\_ T 6 N R 4 E

TYPE MONUMENT P.K./WASHER  
 ON SURFACE - ~~BELOW~~ ON  
 LEFT - ☉ PAV'T - RIGHT ON  
 \_\_\_\_\_ TO \_\_\_\_\_ EDGE PAVEMENT  
 S.L.M. 787+81



GRID: NORTHING: \_\_\_\_\_ EASTING: \_\_\_\_\_

DNF @ 3" DOWN  
 4/12/05



O.D.O.T. DISTRICT 2 SURVEY OFFICE

PERSONNEL \_\_\_\_\_

REFERENCE NO. 52-C SHEET 5 OF \_\_\_\_\_

NOTES D. CURTIS

H.C. J. HOUSEHOLDER DATE 10-13-88

R.C. \_\_\_\_\_ WEATHER MILD

\_\_\_\_\_ TEMP. 55°

ROUTE S.R. #2

COUNTY WILLIAMS

TOWNSHIP SPRINGFIELD

SECTION 4

T \_\_\_\_\_ R \_\_\_\_\_

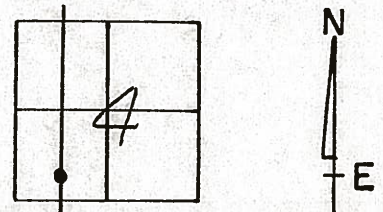
TYPE MONUMENT P.K. NAIL

ON SURFACE - BELOW ON SURFACE

LEFT ☉ PAV'T. - RIGHT ☉ PAV'T

\_\_\_\_\_ TO \_\_\_\_\_ EDGE PAVEMENT

S.L.M. 722 + 71



*Set PK Nail 10/31/89 IRS*



SHINER IN  
29" TREE



#2



SHINER IN  
27" TREE

98.30'

76.69'

31.85'

98.25'

CHURCH ST.

S. R.



SHINER IN  
30" TREE



County Williams S.R. 2

Date 12 Aug. 82

Township Springfield

Weather Fair

Section 4

Temp. 74°

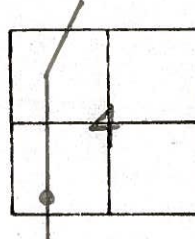
T\_N, R\_E

Personnel I. Stone

P. Neuser

R. Michalak

J. Curtis



REF. No. 52-C

Set PK Nail 1/26/83 IRS

