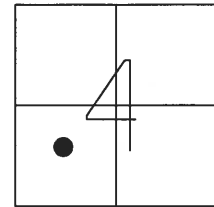


O.D.O.T. DISTRICT 2 SURVEY OFFICE (USE ONLY)

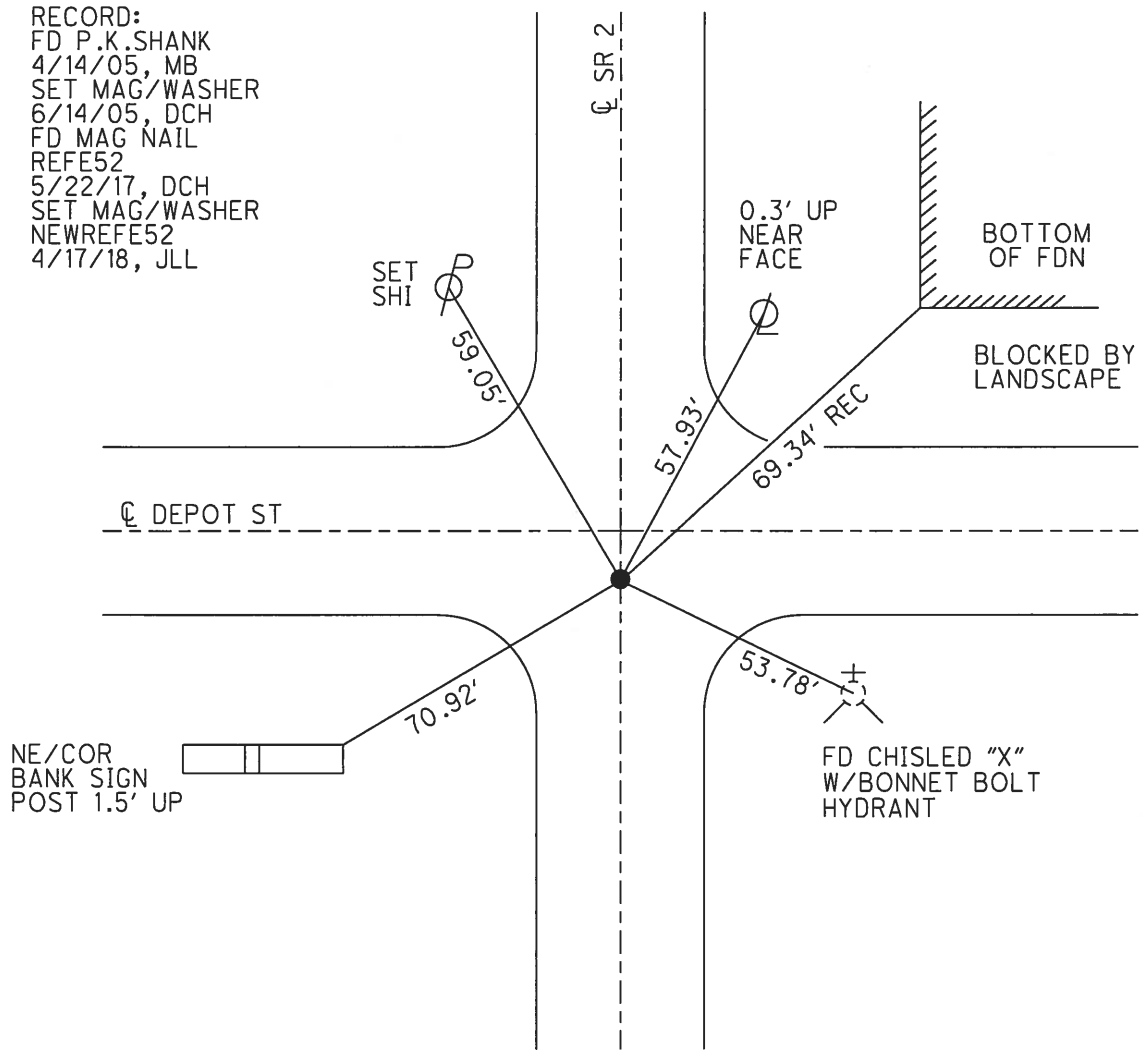
PERSONNEL _____ REFERENCE NO. 52 E SHEET 9 OF 22
 NOTES LEU DATE 5/22/17 ROUTE SR 2
 H.C. HOMAN WEATHER SUNNY COUNTY WILLIAMS
 R.C. LEU TEMP. 57°F TOWNSHIP SPRINGFIELD
 SECTION 4
 T 6 N R 4 E

TYPE MONUMENT MAG/WASHER
 ON SURFACE - ~~BELOW~~ ON
 LEFT - ☉ PAV'T - RIGHT ON
 TO EDGE PAVEMENT
 S.L.M. 793+47



GRID: NORTHING: 674576.033 EASTING: 1444170.782

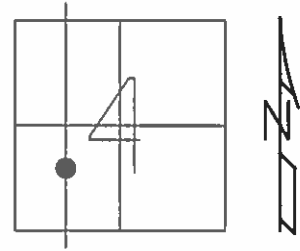
RECORD:
 FD P.K.SHANK
 4/14/05, MB
 SET MAG/WASHER
 6/14/05, DCH
 FD MAG NAIL
 REF52
 5/22/17, DCH
 SET MAG/WASHER
 NEWREF52
 4/17/18, JLL



O.D.O.T. DISTRICT 2 SURVEY OFFICE (USE ONLY)

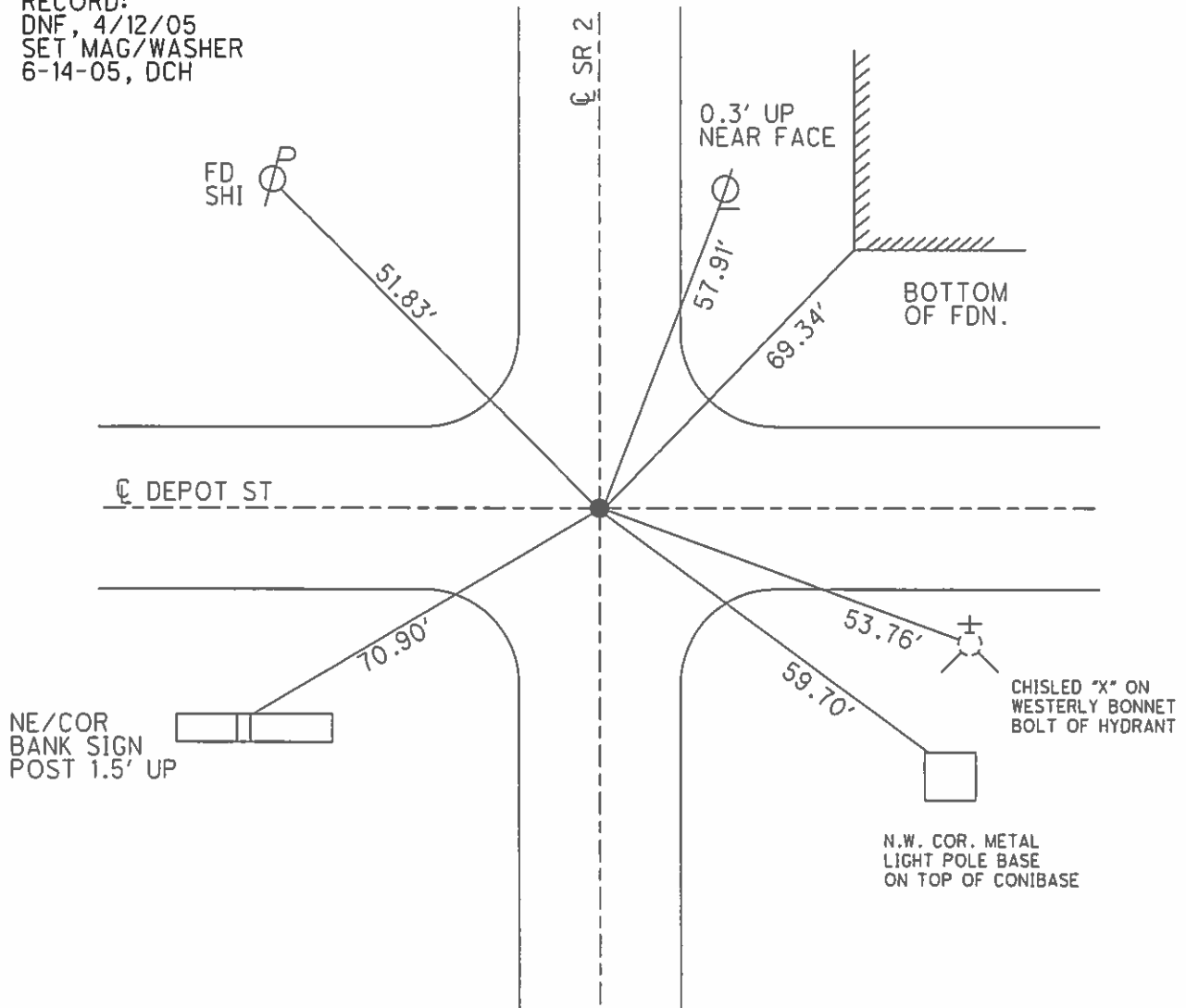
PERSONNEL _____ REFERENCE NO. 52 E SHEET 8 OF 21
 NOTES HOMAN _____ DATE 4/14/05 ROUTE SR 2
 H.C. BARNHISEL WEATHER SUNNY COUNTY WILLIAMS
 R.C. KOLEMAINEN TEMP. 55° TOWNSHIP SPRINGFIELD
 _____ SECTION 4
 _____ T 6 N R 4 E

TYPE MONUMENT P.K.SHANK
 ON SURFACE - ~~BELOW~~ 1"
 LEFT - ☉ PAV'T - RIGHT ON, 6' S OF ☉ E
- TO - EDGE PAVEMENT
 S.L.M. 793+47



GRID: NORTHING: _____ EASTING: _____

RECORD:
 DNF, 4/12/05
 SET MAG/WASHER
 6-14-05, DCH



O.D.O.T. DISTRICT 2 SURVEY OFFICE

PERSONNEL _____

REFERENCE NO. 52-E

SHEET 7 OF _____

NOTES D. CURTIS

H.C. T. HOUSEHOLDER DATE 10-13-88

R.C. _____ WEATHER MILD

_____ TEMP. 55°

ROUTE S. R. #2

COUNTY WILLIAMS

TOWNSHIP SPRINGFIELD

SECTION 4

T. _____ R. _____

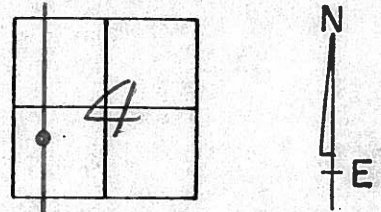
TYPE MONUMENT P. K. NAIL

ON SURFACE - BELOW ON SURFACE

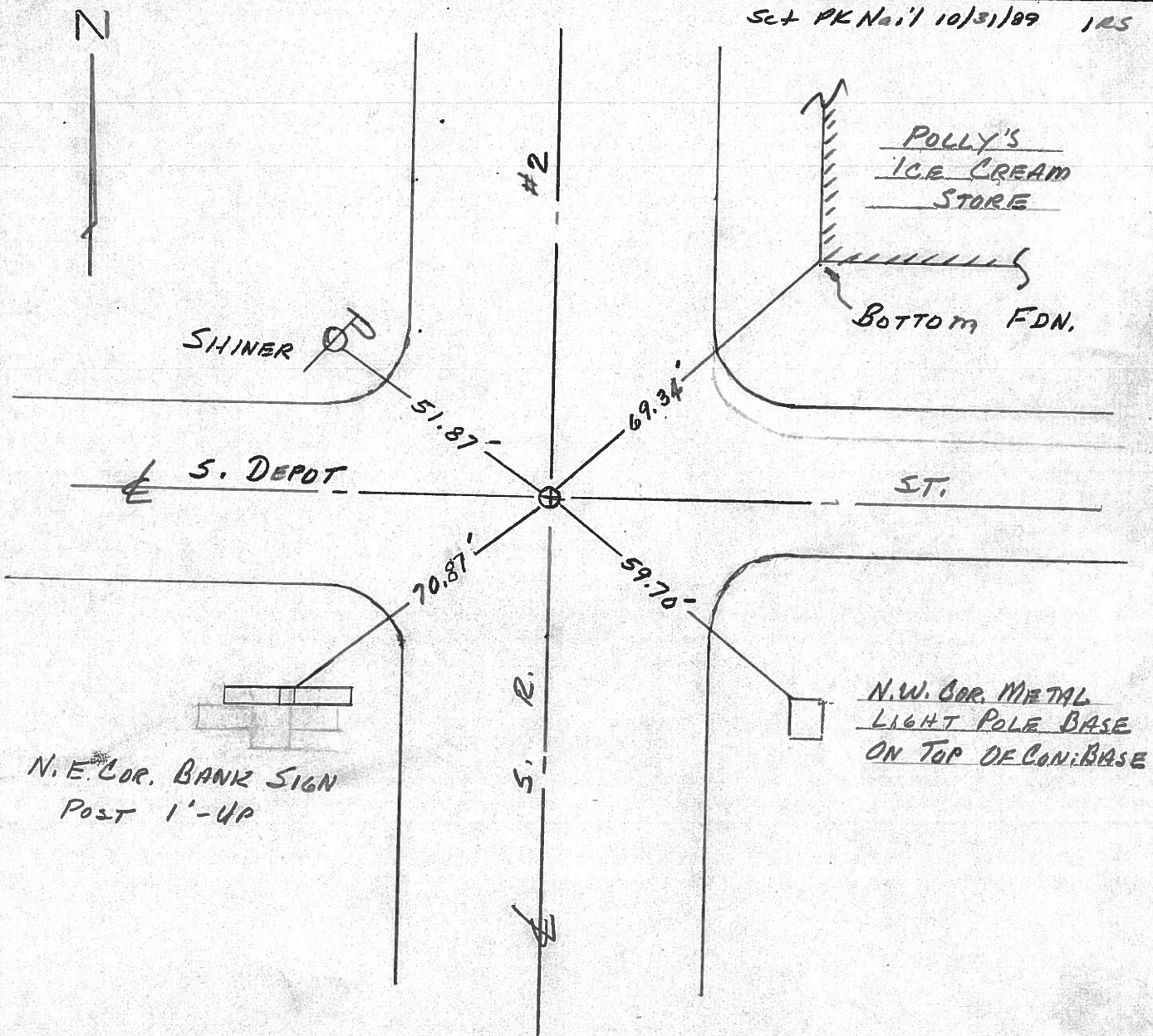
LEFT - ☉ PAV'T. - RIGHT ☉ PAV'T

_____ TO _____ EDGE PAVEMENT

S.L.M. 728+40



Set PK Nail 10/31/89 IRS



County Wilkins S.R. 2

Date 12 Aug. 82

Township Springfield

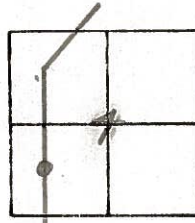
Weather Warm

Section 4

Temp. 75°

T N, R E

Personnel I. Stone



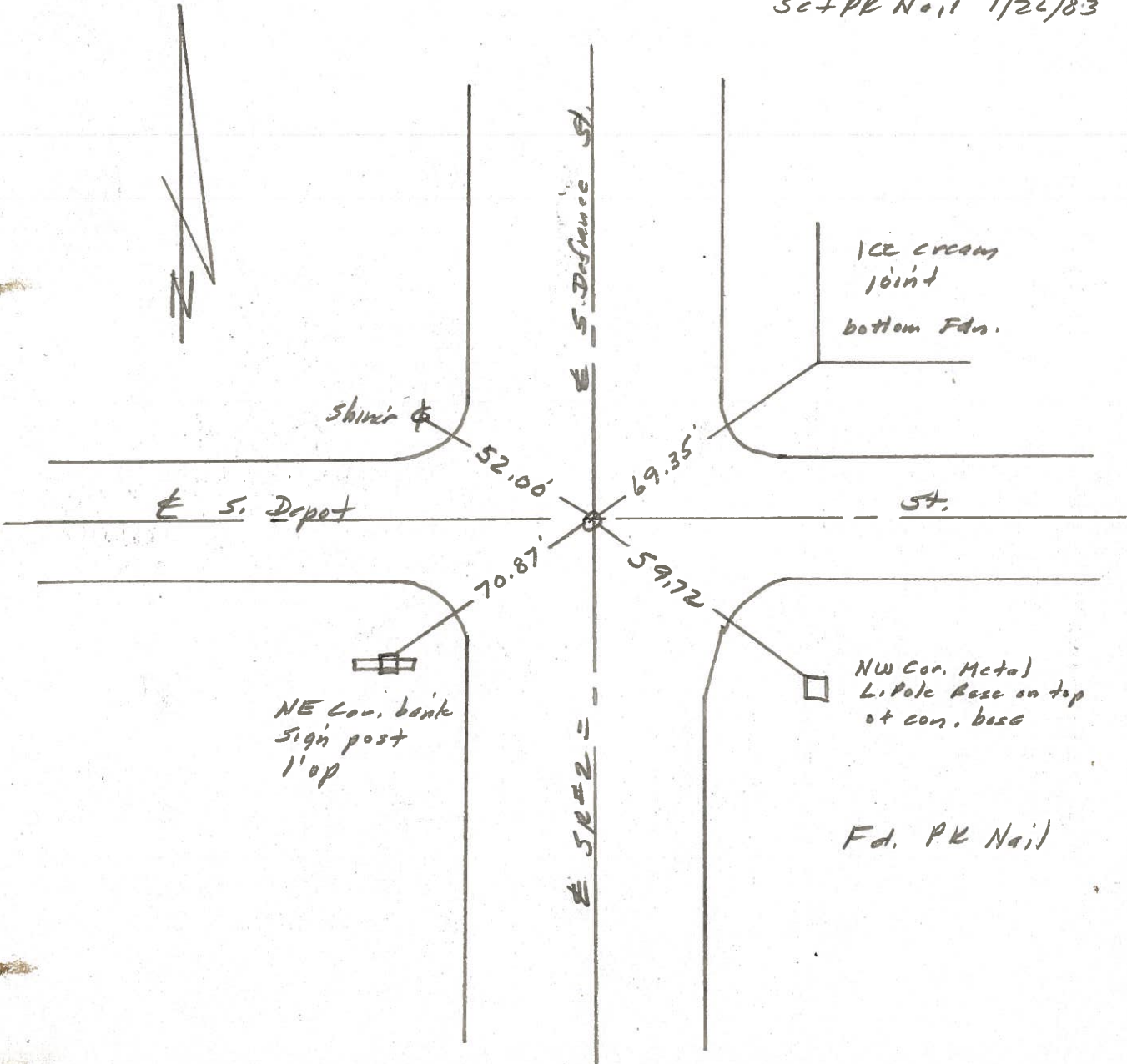
P. Newser

R. Michalske

D. Curtis

REF. NO. **52-E**

Set PK Nail 1/26/83 IRS



PERSONNEL TITLE PERSONNEL TITLE

Louys

COUNTY Wi.

DATE _____

S. R. 2-Stryker (Curtice St.)

WEATHER _____

From W. Corp. Line
to Defiance St.

SEC. _____

TEMP. _____

DESCRIPTION

Witnesses to Control Points

JOB NO. _____

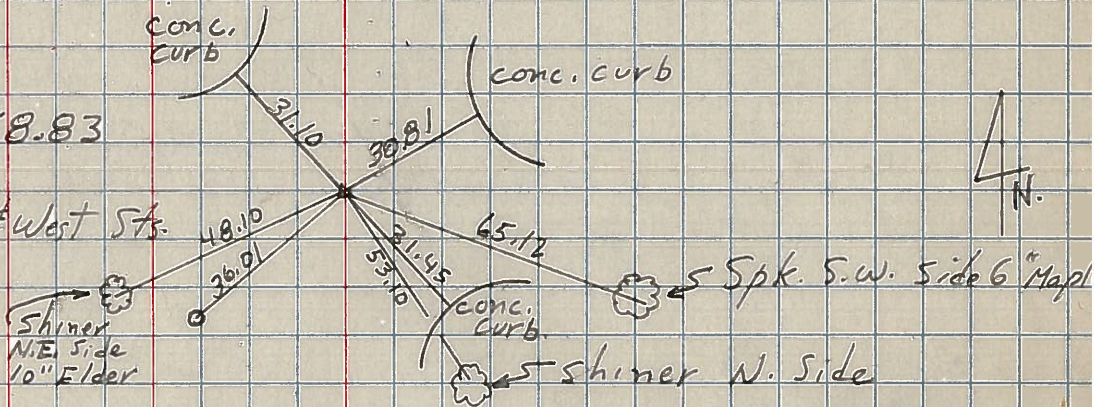
LEFT

CENTER LINE

RIGHT

P.I. - Sta. 683+76.00
INT'X N. South & Defiance Sts.

P.I. - Sta. 670+58.83
 $\Delta = 0^\circ - 40' \text{ LT.}$
INT'X N. of South & West Sts.



P.I. - Sta. 644+24.74
 $\Delta = 1^\circ - 00' \text{ LT.}$

P.I. - Sta. 640+98.55
 $\Delta = 0^\circ - 51' \text{ LT.}$
Shiner over E. Abutment

P.I. - Sta. 639+55.17
 $\Delta = 0^\circ - 46' \text{ RT}$
Shiner over W. Abutment