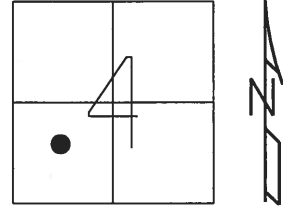


O.D.O.T. DISTRICT 2 SURVEY OFFICE (USE ONLY)

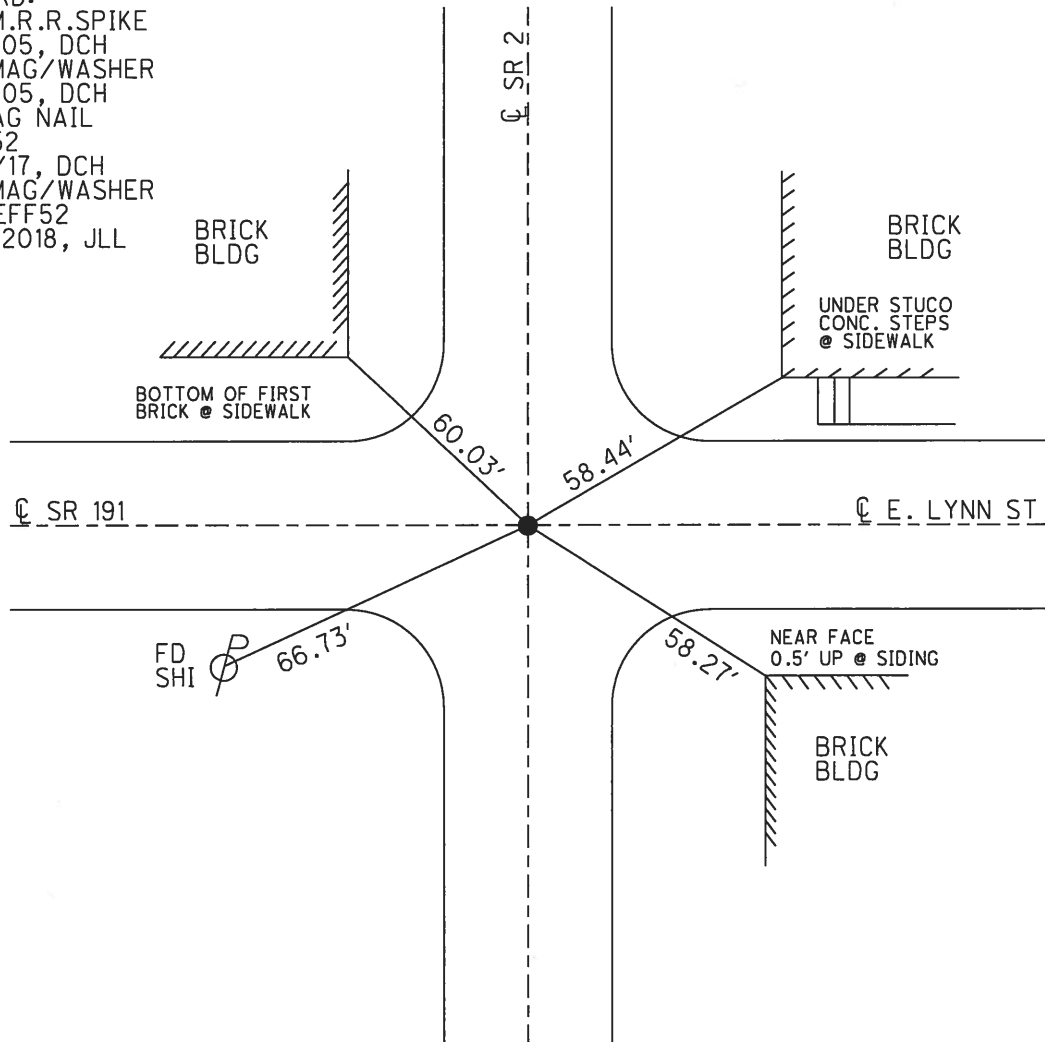
PERSONNEL \_\_\_\_\_ REFERENCE NO. 52 F SHEET 10 OF 22  
 NOTES \_\_\_\_\_ LEU \_\_\_\_\_ DATE 5/22/17 ROUTE SR 2  
 H.C. \_\_\_\_\_ HOMAN \_\_\_\_\_ WEATHER SUNNY COUNTY WILLIAMS  
 R.C. \_\_\_\_\_ LEU \_\_\_\_\_ TEMP. 57° TOWNSHIP SPRINGFIELD  
 SECTION 4  
 T 6 N R 4 E

TYPE MONUMENT MAG NAIL  
 ON SURFACE - ~~BELOW~~ ON \_\_\_\_\_  
 LEFT - ☉ PAV'T - RIGHT ON \_\_\_\_\_  
 \_\_\_\_\_ TO \_\_\_\_\_ EDGE PAVEMENT  
 S.L.M. 799+00.78



GRID: NORTHING: 675142.546 EASTING: 1444180.175

RECORD:  
 FD SM.R.R.SPIKE  
 4/15/05, DCH  
 SET MAG/WASHER  
 6/14/05, DCH  
 FD MAG NAIL  
 REFF52  
 5/22/17, DCH  
 SET MAG/WASHER  
 NEWREFF52  
 3/15/2018, JLL

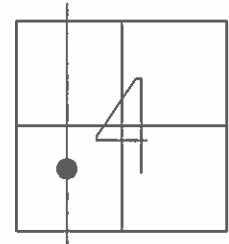


O.D.O.T. DISTRICT 2 SURVEY OFFICE (USE ONLY)

PERSONNEL \_\_\_\_\_ REFERENCE NO. 52 F SHEET 9 OF 21

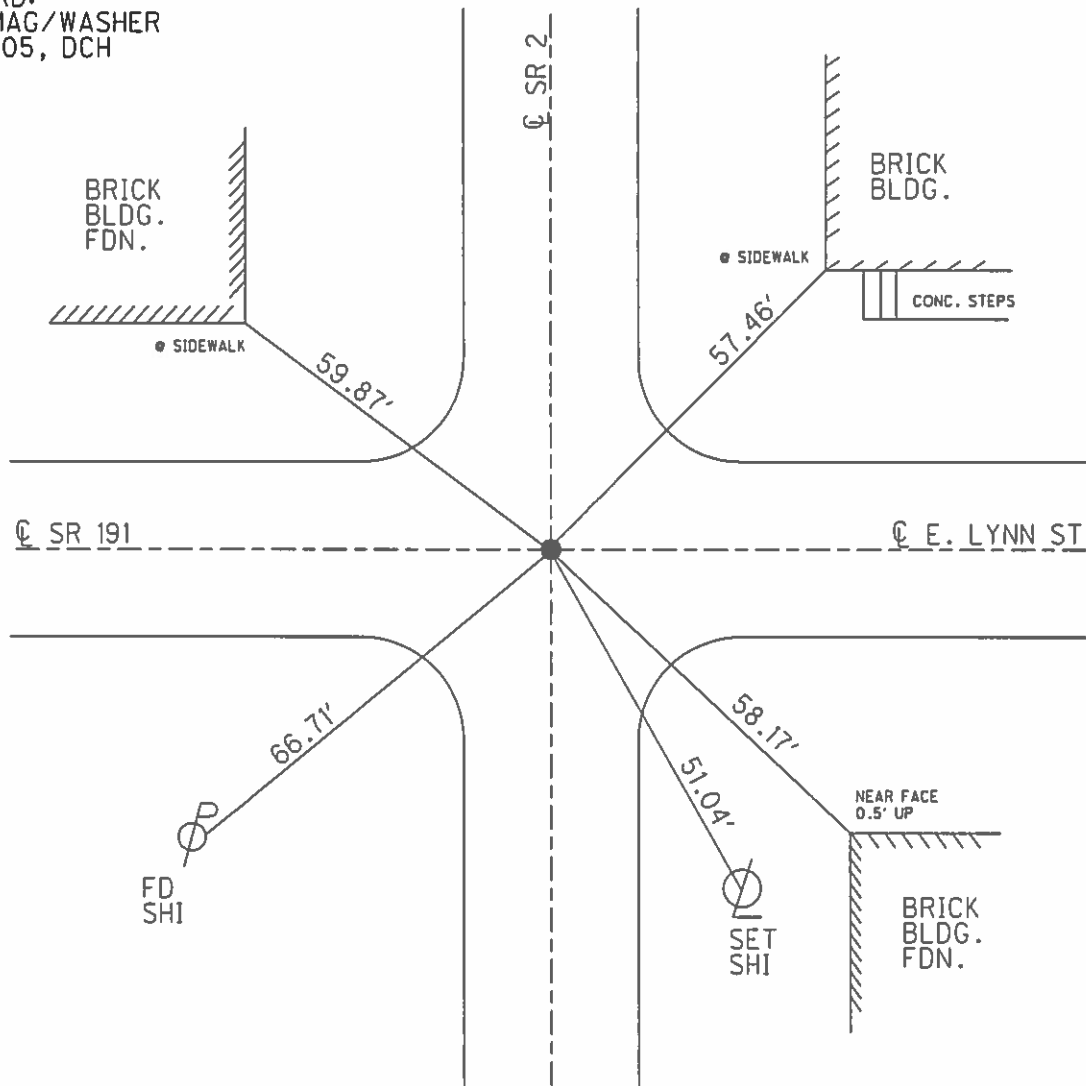
NOTES HOMAN \_\_\_\_\_ DATE 4/15/05 ROUTE SR 2  
 H.C. HOMAN \_\_\_\_\_ WEATHER SUNNY COUNTY WILLIAMS  
 R.C. KOLEMAINEN \_\_\_\_\_ TEMP. 55° TOWNSHIP SPRINGFIELD  
 \_\_\_\_\_ SECTION 4  
 \_\_\_\_\_ T 6 N R 4 E

TYPE MONUMENT SM.R.R.SPIKE  
 ON SURFACE - ~~BELOW~~ ON  
 LEFT - Q PAV'T - RIGHT ON  
 - TO - EDGE PAVEMENT  
 S.L.M. 799+23



GRID: NORTHING: \_\_\_\_\_ EASTING: \_\_\_\_\_

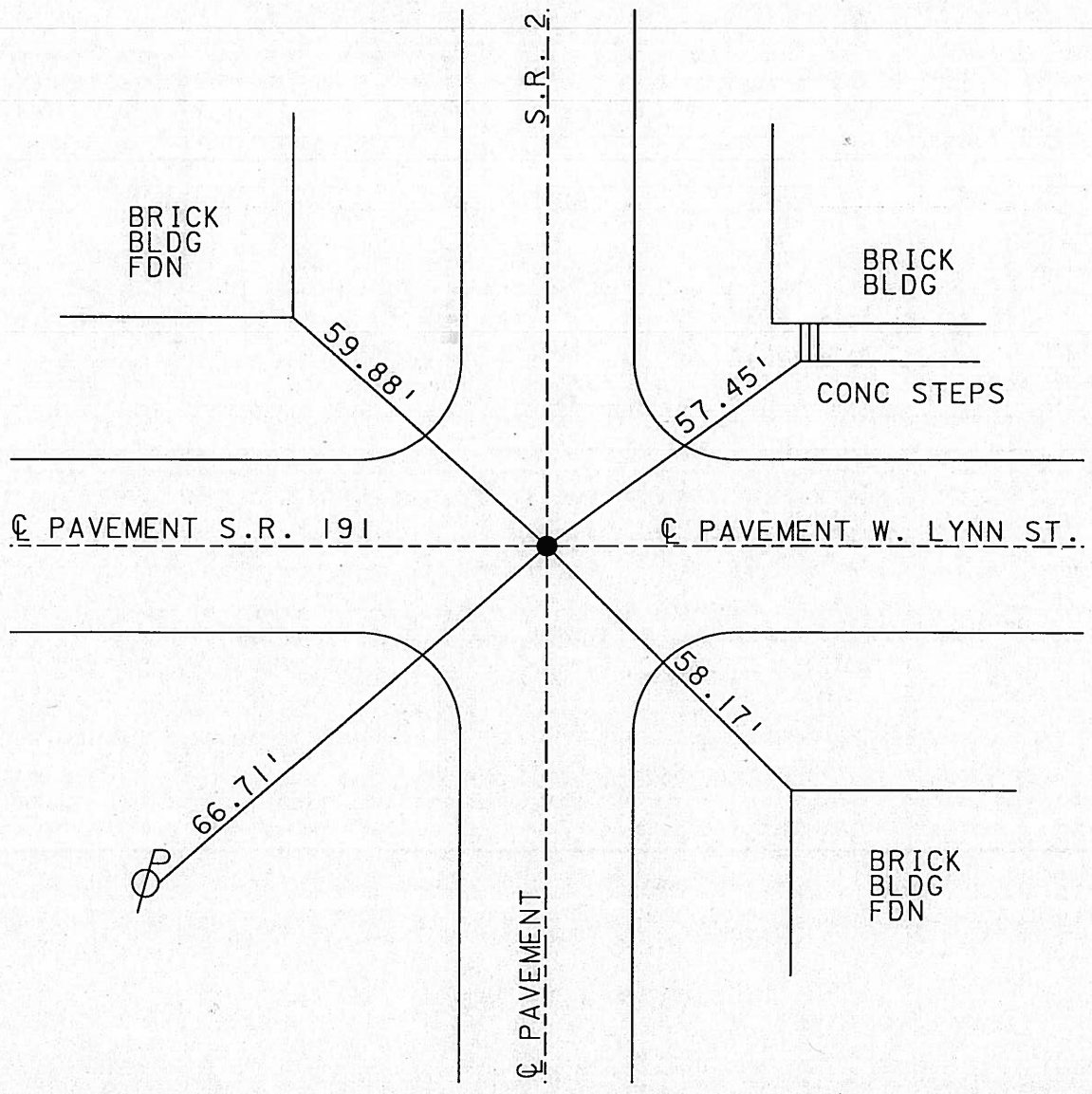
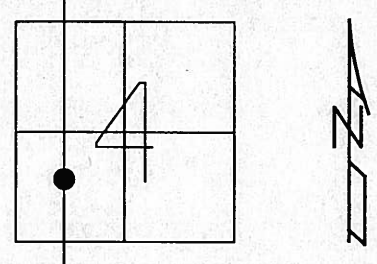
RECORD:  
 SET MAG/WASHER  
 6/14/05, DCH



O.D.O.T. DISTRICT 2 SURVEY OFFICE

PERSONNEL	REFERENCE NO. <u>52-F</u>	SHEET <u>1</u> OF <u>2</u>
NOTES <u>CURTIS</u>	DATE <u>10-13-88</u>	ROUTE <u>SR 191</u>
H.C. <u>HOUSEHOLDER</u>	WEATHER <u>MILD</u>	COUNTY <u>WILLIAMS</u>
R.C. _____	TEMP. <u>55°</u>	TOWNSHIP <u>SPRINGFIELD</u>
		SECTION <u>4</u>
		<u>T 6 N R 4 E</u>

TYPE MONUMENT SM RR SPIKE  
 ON SURFACE ~~BELOW~~ ON  
~~LEFT~~ - Q PAV'T - ~~RIGHT~~ ON  
TO EDGE PAVEMENT  
 S.L.M. 228+10 = SR 191  
734+07 = SR 2



# O.D.O.T. DISTRICT 2 SURVEY OFFICE

PERSONNEL \_\_\_\_\_

REFERENCE NO. 52-F SHEET 8 OF \_\_\_\_\_

NOTES D. CURTIS

H.C. J. HOUSEHOLDER DATE 10-13-88

R.C. \_\_\_\_\_ WEATHER MILD

\_\_\_\_\_ TEMP. 55°

ROUTE S.R. #2

COUNTY WILLIAMS

TOWNSHIP SPRINGFIELD

SECTION 4

T \_\_\_\_\_ R \_\_\_\_\_

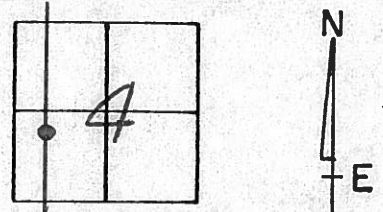
TYPE MONUMENT SO. BOLT

ON SURFACE - BELOW 3" BELOW

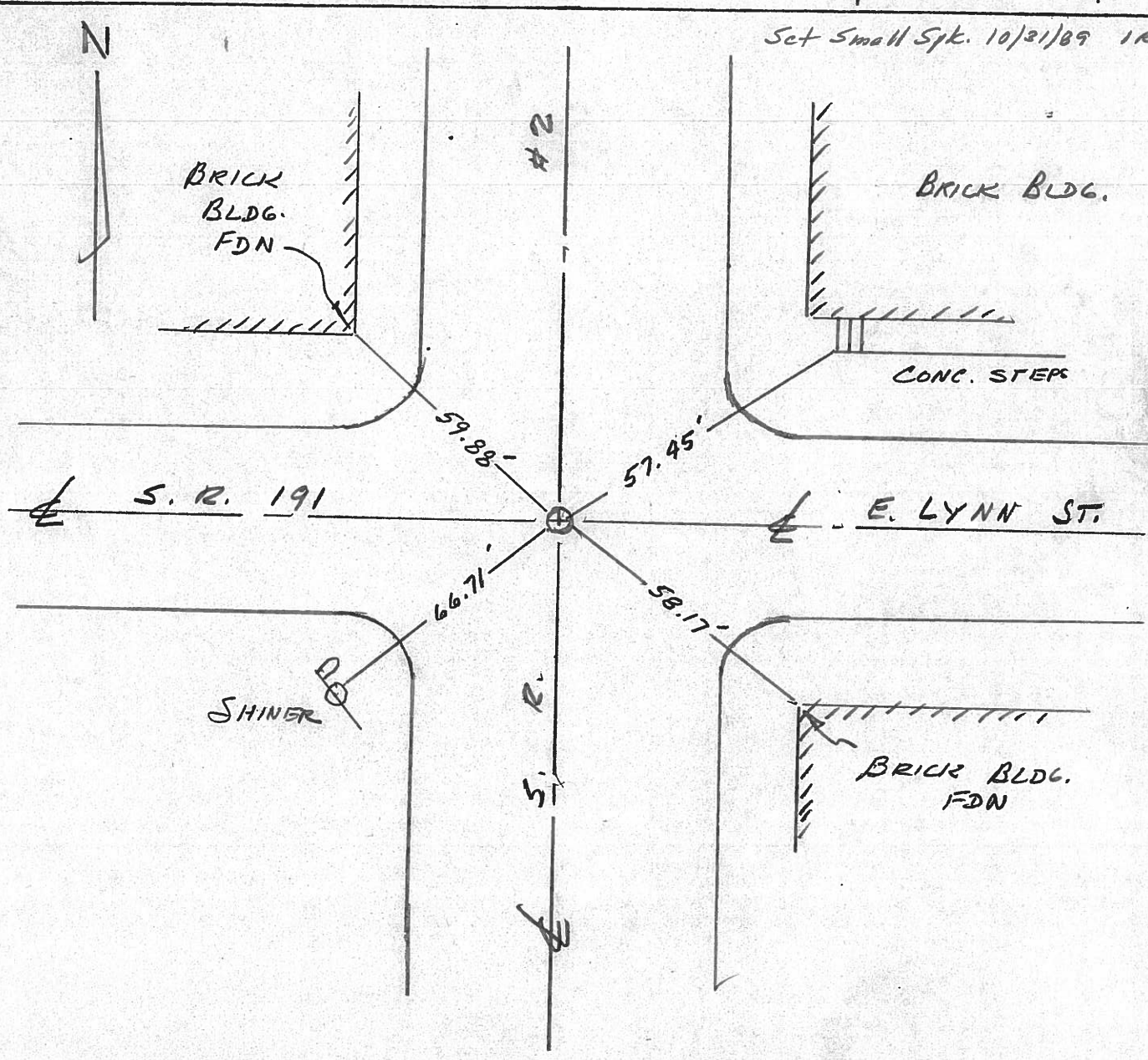
LEFT - ☉ PAV'T. - RIGHT ☉ PAV'T

\_\_\_\_\_ TO \_\_\_\_\_ EDGE PAVEMENT

S.L.M. 734 + 07



Set Small Spk. 10/21/89 IRS





County Williams S.R. 2

Date 12 Aug. 82

Township Springfield

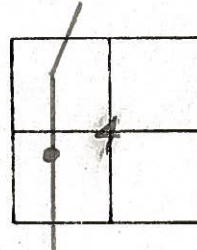
Weather Warm

Section 4

Temp. 75°

T N, R E

Personnel I. Stone



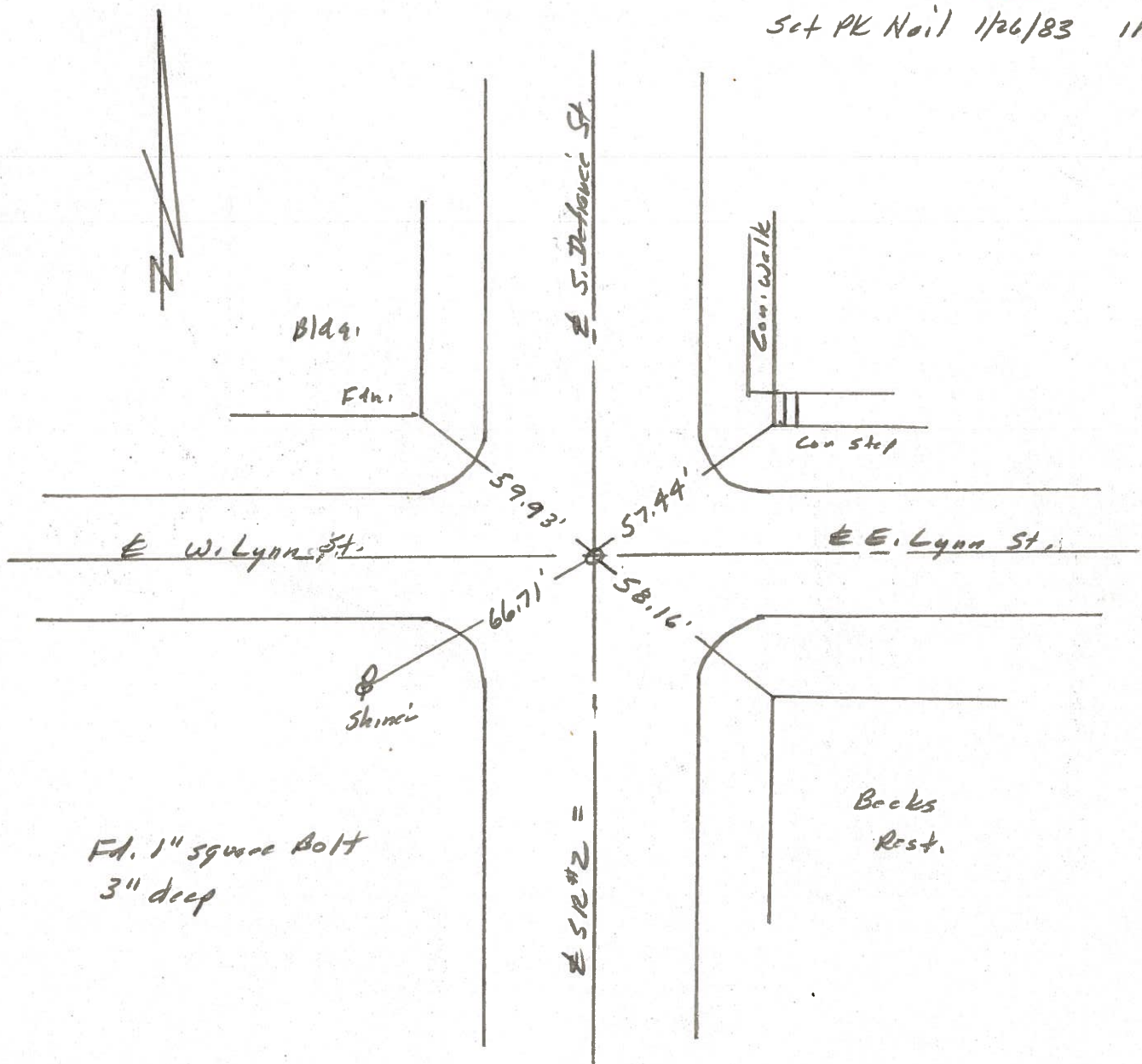
P. Neuser

R. Michalek

D. Curtis

REF. NO. 52-F

Set PK Nail 1/26/83 IRS





PERSONNEL TITLE PERSONNEL TITLE  
Pessefall \_\_\_\_\_

COUNTY Williams DATE 11-30-60

S. R. # 2 Stryker WEATHER Snow

SEC. \_\_\_\_\_ TEMP. 30°

DESCRIPTION Stryker Village LEFT CENTER LINE RIGHT JOB NO. \_\_\_\_\_

