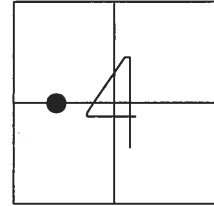


O.D.O.T. DISTRICT 2 SURVEY OFFICE (USE ONLY)

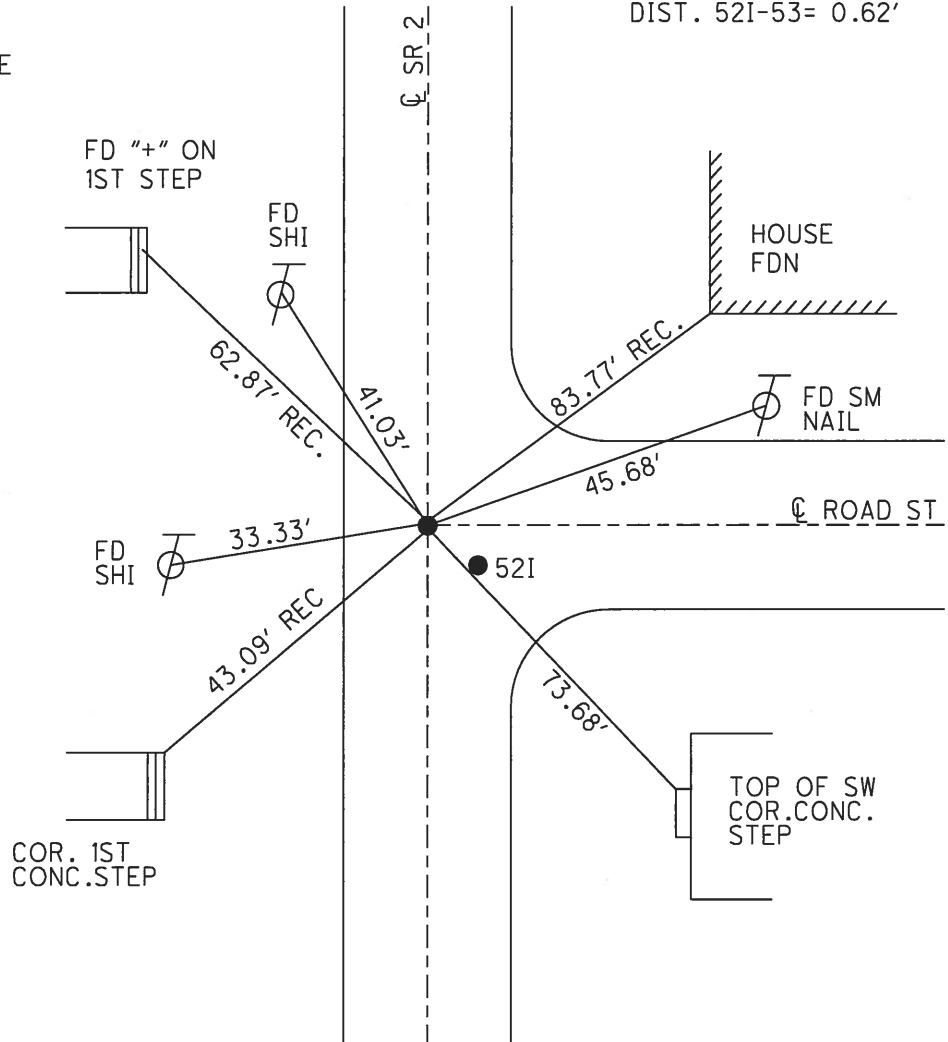
PERSONNEL _____ REFERENCE NO. 53 SHEET 14 OF 22
 NOTES _____ DATE 5/22/17 ROUTE SR 2
 H.C. LEU _____ WEATHER SUNNY COUNTY WILLIAMS
 R.C. HOMAN _____ TEMP. 60°F TOWNSHIP SPRINGFIELD
 SECTION 4
 T 6 N R 4 E

TYPE MONUMENT MAG NAIL
 ON SURFACE - ~~BELOW~~ ON
 LEFT - CL PAV'T - ~~RIGHT~~ 0.5'
 - TO - EDGE PAVEMENT
 S.L.M. 810+82.97



GRID: NORTHING: 676307.307 EASTING: 1444182.558

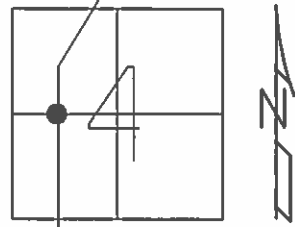
RECORD:
 SET P.K.NAIL
 ATOP BOAT SPIKE
 1/26/83, DC
 FD P.K.NAIL
 4/15/05, DCH
 SET MAG/WASHER
 6/14/05, DCH
 FD MAG NAIL
 REF53
 5/22/17, DCH
 SET MAG/WASHER
 NEWREF53
 4/20/18, JLL



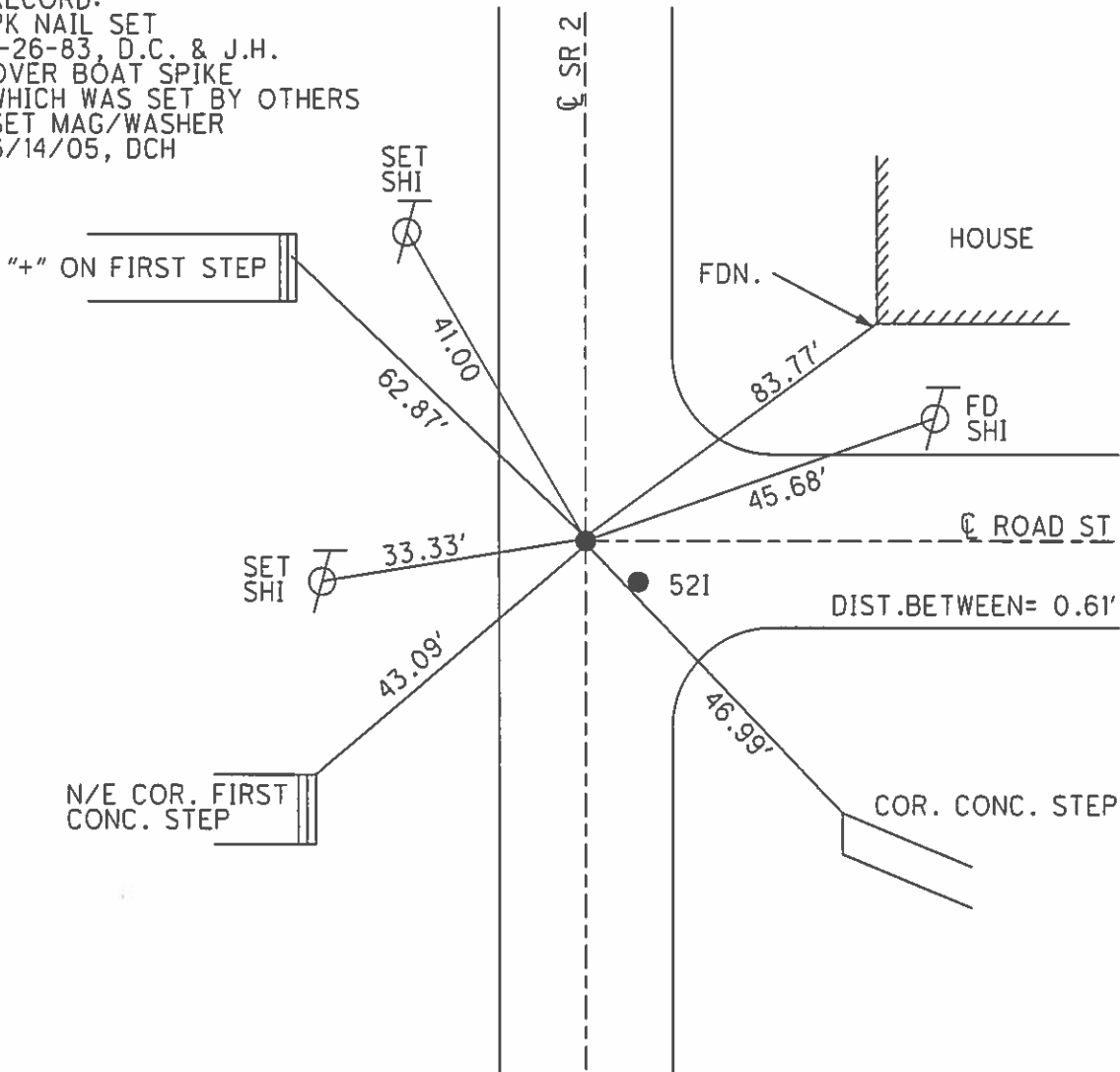
O.D.O.T. DISTRICT 2 SURVEY OFFICE (USE ONLY)

PERSONNEL _____ REFERENCE NO. 53 SHEET 13 OF 21
 NOTES HOMAN _____ DATE 4/15/05 ROUTE SR 2
 H.C. HOMAN _____ WEATHER SUNNY COUNTY WILLIAMS
 R.C. KOLEMAINEN _____ TEMP. 50° TOWNSHIP SPRINGFIELD
 _____ SECTION 4
 _____ T 6 N R 4 E

TYPE MONUMENT P.K.NAIL
 ON SURFACE - ~~BELOW~~ ON _____
 LEFT - Q PAV'T - RIGHT ON _____
 - TO - EDGE PAVEMENT
 S.L.M. 810+90
 GRID: NORTHING: _____ EASTING: _____



RECORD:
 PK NAIL SET
 1-26-83, D.C. & J.H.
 OVER BOAT SPIKE
 WHICH WAS SET BY OTHERS
 SET MAG/WASHER
 6/14/05, DCH



O.D.O.T. DISTRICT 2 SURVEY OFFICE

PERSONNEL _____

REFERENCE NO. 53

SHEET 10 OF _____

NOTES D. CURTIS

H.C. J. HOUSEHOLDER DATE 12-14-88

R.C. _____ WEATHER MILD

_____ TEMP. 35°

ROUTE S. R. #2

COUNTY WILLIAMS

TOWNSHIP SPRINGFIELD

SECTION 4

T _____ R _____

NOTE: (A) THIS P.K. NAIL WAS SET BY US
1-26-83 OVER BOAT SAK. WHICH
WAS SET BY OTHERS.
(B) SET BY US

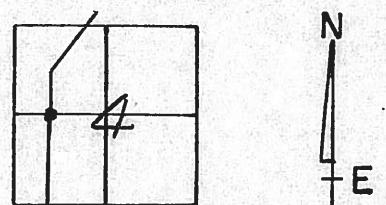
TYPE MONUMENT (A) _____ (B) _____

ON SURFACE - BELOW ON SURFACE

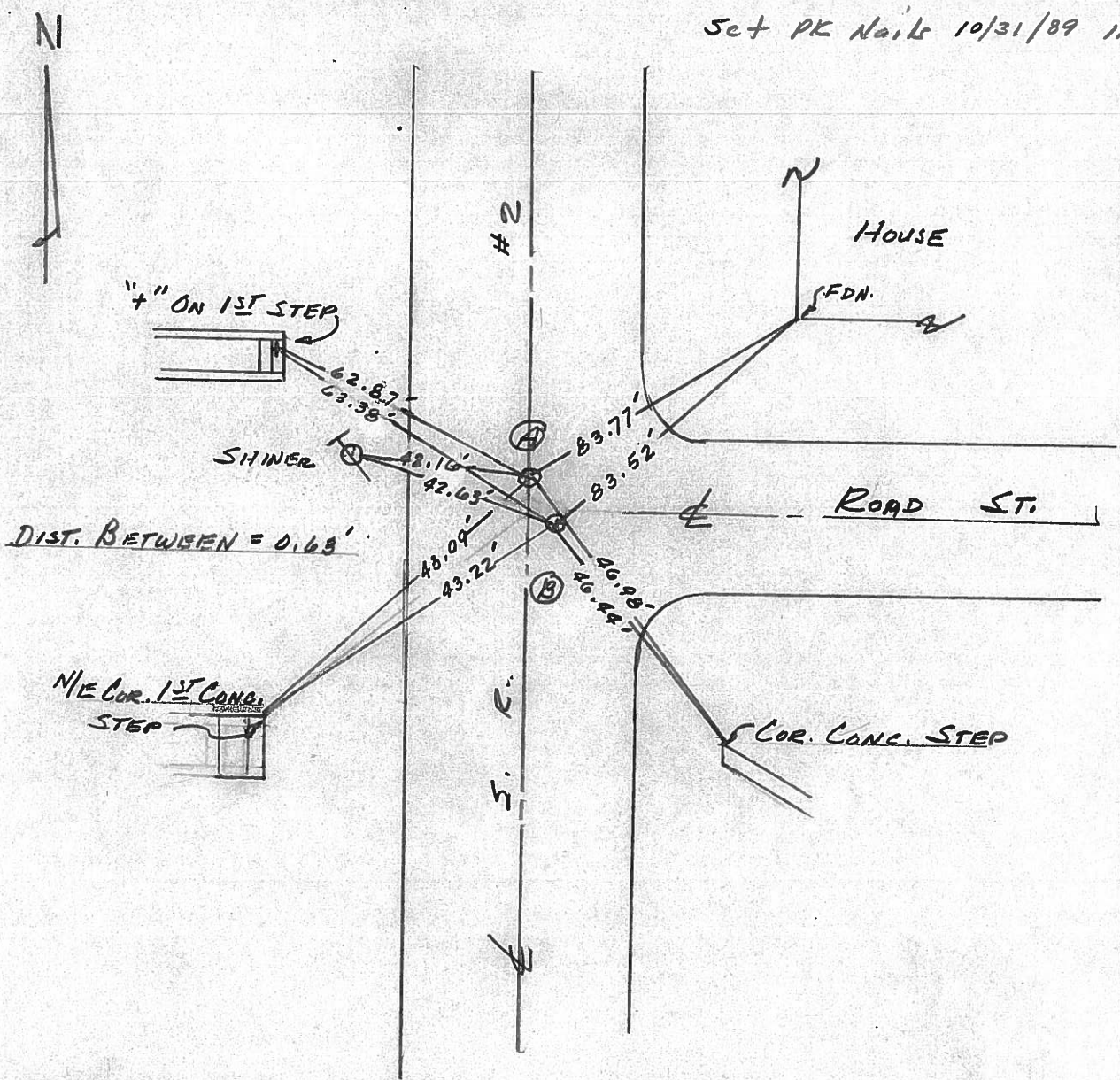
LEFT - ☉ PAV'T. - RIGHT _____

— TO — EDGE PAVEMENT _____

S.L.M. 745 + 73



Set PK Nails 10/31/89 125



O.D.O.T. DISTRICT 2 SURVEY OFFICE

SHEET 10 OF

County Williams S.R. 2

Date 12 Aug. 82

Township Springfield

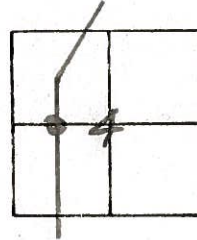
Weather Warm

Section 4

Temp. 75°

T N, R E

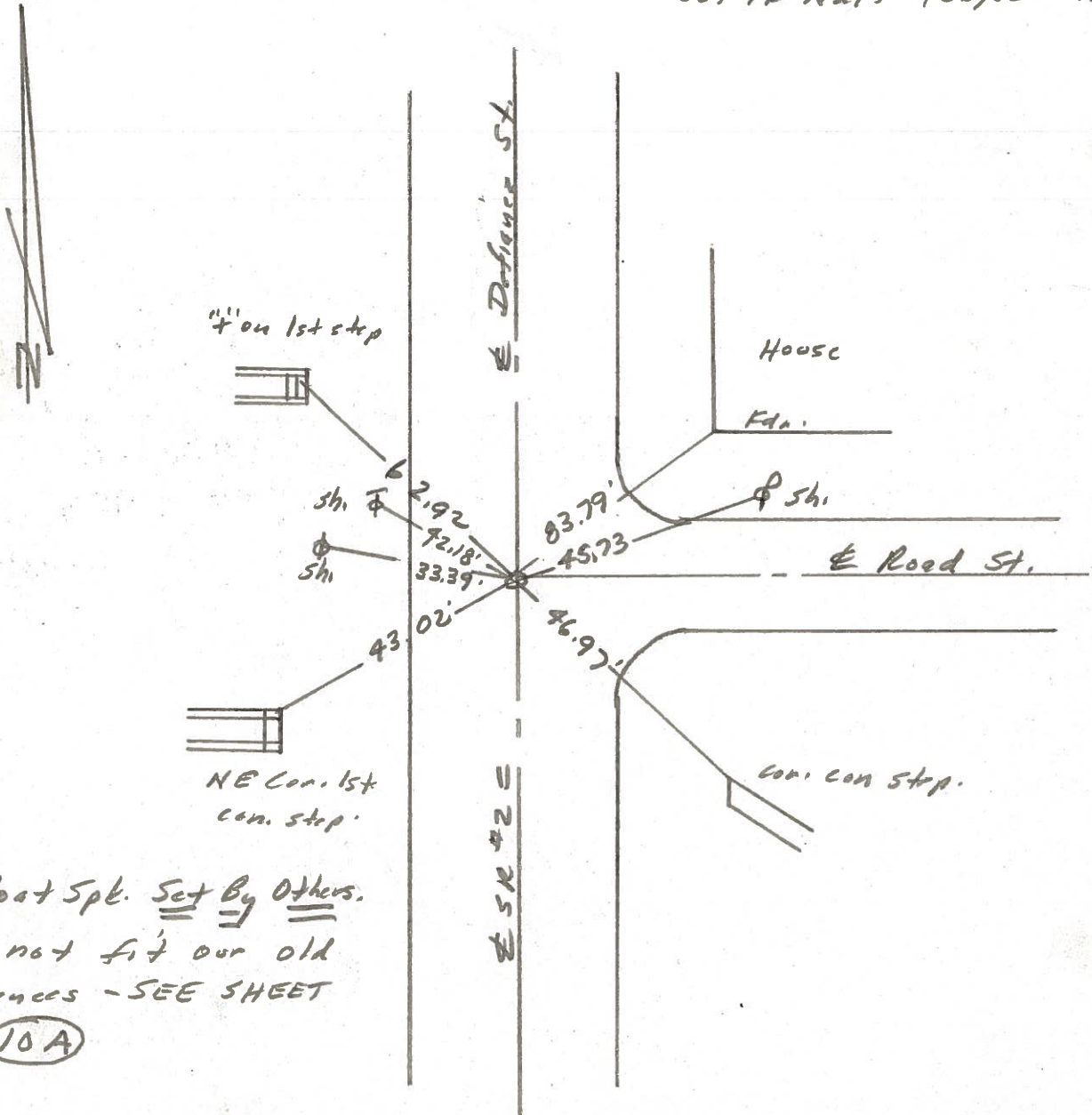
Personnel J. Stone



P. Neusev
R. Michelak
D. Curtis

REF. NO. **(53)**

Set PK Nail 1/26/83 - 123



Fd. Boat Spl. Set By Others.
Does not fit our old
references - SEE SHEET
No. **(10A)**