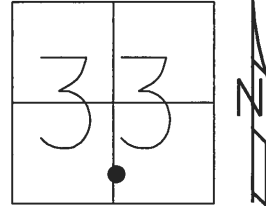


O.D.O.T. DISTRICT 2 SURVEY OFFICE (USE ONLY)

PERSONNEL \_\_\_\_\_ REFERENCE NO. 54 SHEET 17 OF 22  
 NOTES CARSON DATE 5/23/17 ROUTE SR 2  
 H.C. HOMAN WEATHER SUNNY COUNTY WILLIAMS  
 R.C. LEU TEMP. 61°F TOWNSHIP BRADY  
 SECTION 33  
T 7 N R 4 E

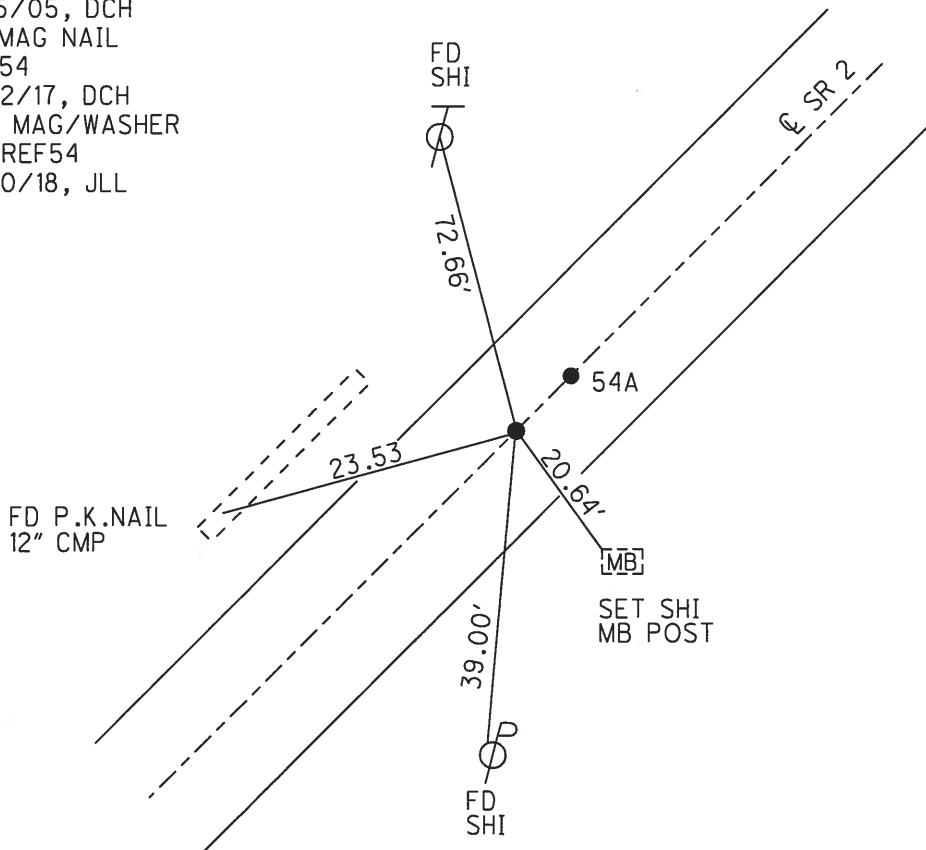
TYPE MONUMENT P.K.NAIL  
 ON SURFACE - ~~BELOW~~ ON \_\_\_\_\_  
~~LEFT~~ - C PAV'T - RIGHT 0.5'  
 - TO - EDGE PAVEMENT  
 S.L.M. 846+91.81



GRID: NORTHING: 679416.206 EASTING: 1445565.110

RECORD:  
 FD P.K.NAIL  
 4/15/05, DCH  
 FD MAG NAIL  
 REF54  
 5/22/17, DCH  
 SET MAG/WASHER  
 NEWREF54  
 4/20/18, JLL

DIST.54-54A= 9.99'



O.D.O.T. DISTRICT 2 SURVEY OFFICE (USE ONLY)

PERSONNEL \_\_\_\_\_ REFERENCE NO. 54 SHEET 16 OF 21  
 NOTES HOMAN DATE 4/15/05 ROUTE SR 2  
 H.C. HOMAN WEATHER SUNNY COUNTY WILLIAMS  
 R.C. KOLEMAINEN TEMP. 50° TOWNSHIP BRADY  
 SECTION 33  
T 7 N R 4 E

TYPE MONUMENT P.K.NAIL  
 ON SURFACE - ~~BELOW~~ ON  
 LEFT - C PAV'T - RIGHT ON  
TO - EDGE PAVEMENT  
 S.L.M. 846+95  
 GRID: NORTHING: \_\_\_\_\_ EASTING: \_\_\_\_\_

