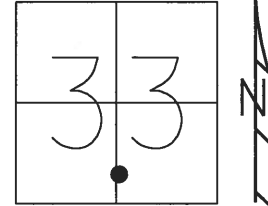


O.D.O.T. DISTRICT 2 SURVEY OFFICE (USE ONLY)

PERSONNEL _____ REFERENCE NO. 54 A SHEET 18 OF 22
 NOTES CARSON DATE 5/23/17 ROUTE SR 2
 H.C. HOMAN WEATHER SUNNY COUNTY WILLIAMS
 R.C. LEU TEMP. 61°F TOWNSHIP BRADY
 SECTION 33
T 7 N R 4 E

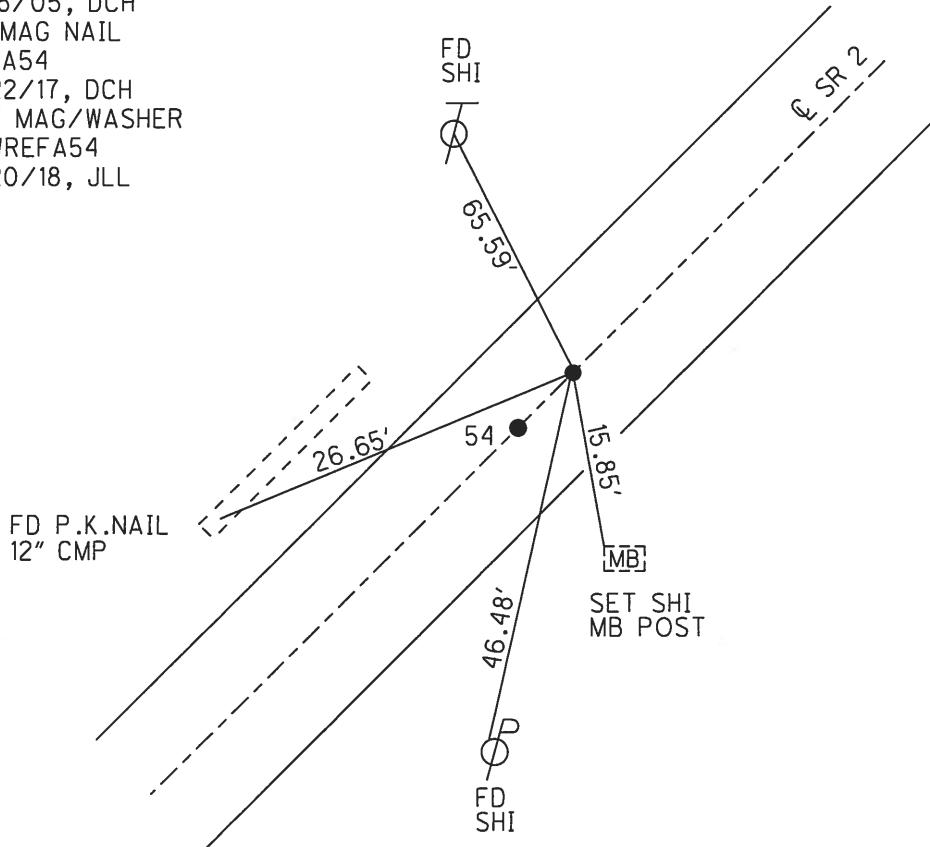
TYPE MONUMENT P.K.NAIL
 ON SURFACE - ~~BELOW~~ ON _____
~~LEFT~~ - ℄ PAV'T - RIGHT 0.5'
 - TO - EDGE PAVEMENT
 S.L.M. 847+06



GRID: NORTHING: 679423.560 EASTING: 1445571.859

DIST.54-54A= 9.99'

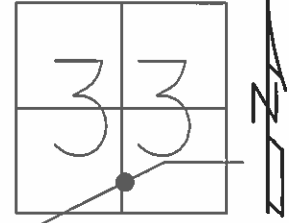
RECORD:
 FD P.K.NAIL
 4/15/05, DCH
 FD MAG NAIL
 REFA54
 5/22/17, DCH
 SET MAG/WASHER
 NEWREFA54
 4/20/18, JLL



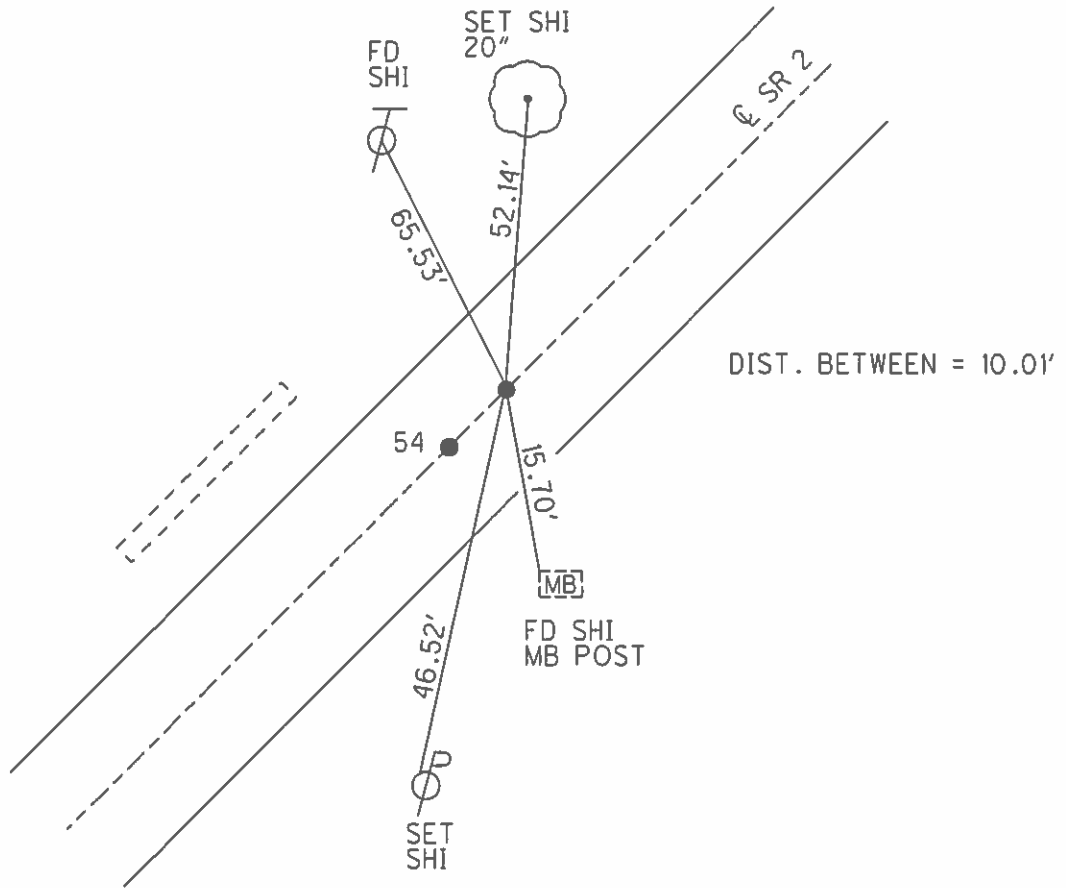
O.D.O.T. DISTRICT 2 SURVEY OFFICE (USE ONLY)

PERSONNEL _____ REFERENCE NO. 54 A SHEET 17 OF 21
 NOTES HOMAN DATE 4/15/05 ROUTE SR 2
 H.C. HOMAN WEATHER SUNNY COUNTY WILLIAMS
 R.C. KOLEMAINEN TEMP. 50° TOWNSHIP BRADY
 SECTION 33
T 7 N R 4 E

TYPE MONUMENT P.K.NAIL
 ON SURFACE - ~~BELOW~~ ON _____
 LEFT - ℄ PAV'T - RIGHT ON _____
 - TO - EDGE PAVEMENT
 S.L.M. 847+06



GRID: NORTHING: _____ EASTING: _____



O.D.O.T. DISTRICT 2 SURVEY OFFICE

PERSONNEL _____

REFERENCE NO. 54

SHEET 13 OF _____

NOTES D. CURTIS

H.C. J. HOUSEHOLDER DATE 12-14-88

R.C. _____ WEATHER MILD

_____ TEMP. 35°

ROUTE S.R.#2

COUNTY WILLIAMS

TOWNSHIP BRADY

SECTION 33

T _____ R _____

TYPE MONUMENT P.K. NAIL

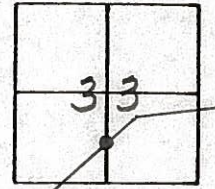
ON SURFACE - BELOW SURFACE

LEFT- & PAV'T. - RIGHT & PAV'T

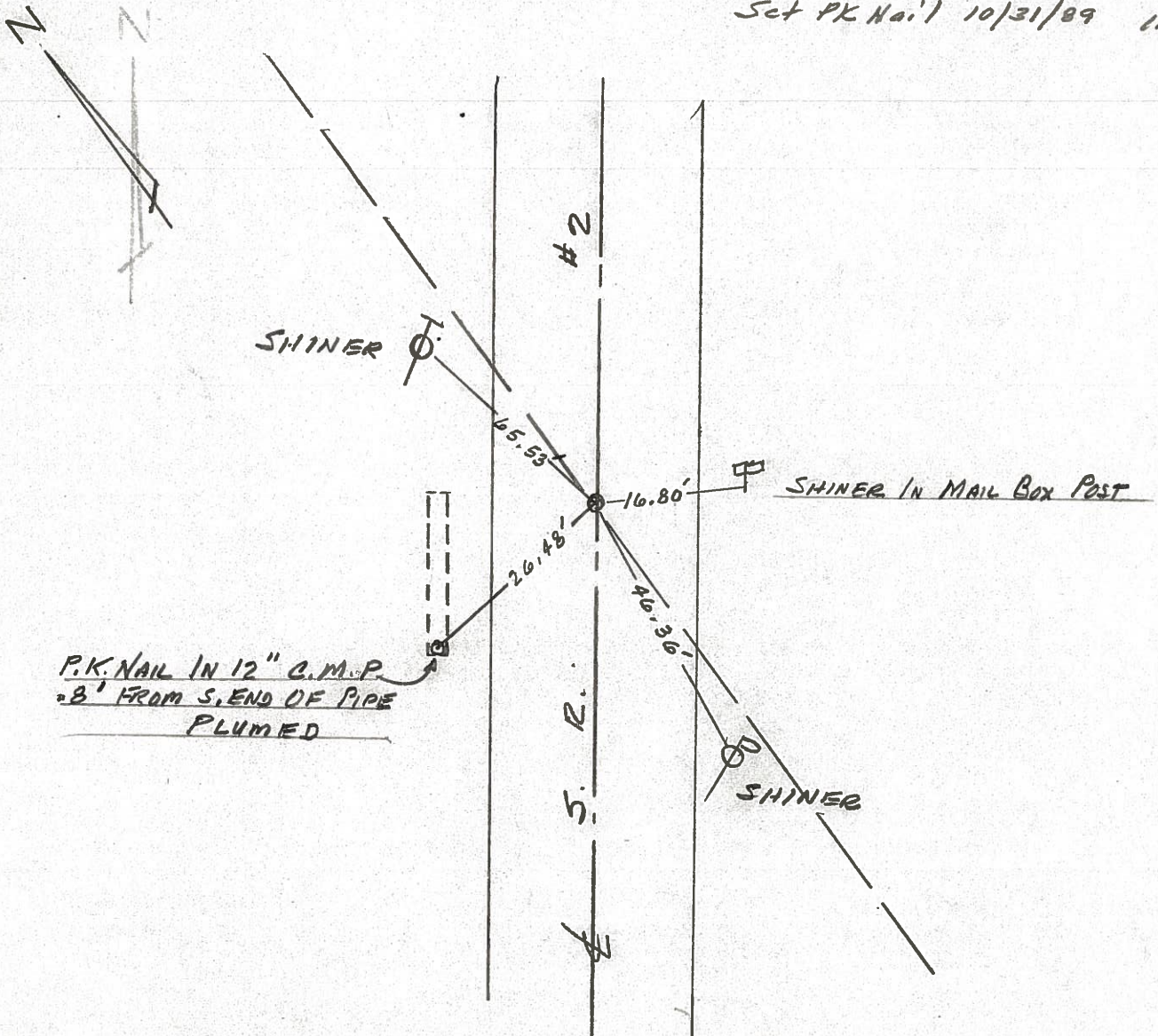
_____ TO _____ EDGE PAVEMENT

S.L.M. 781 + 94

54-A



Set PK Nail 10/31/89 IRS

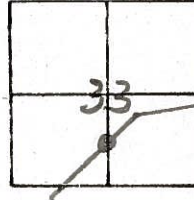


O.D.O.T. DISTRICT 2 SURVEY OFFICE

SHEET 13 OF

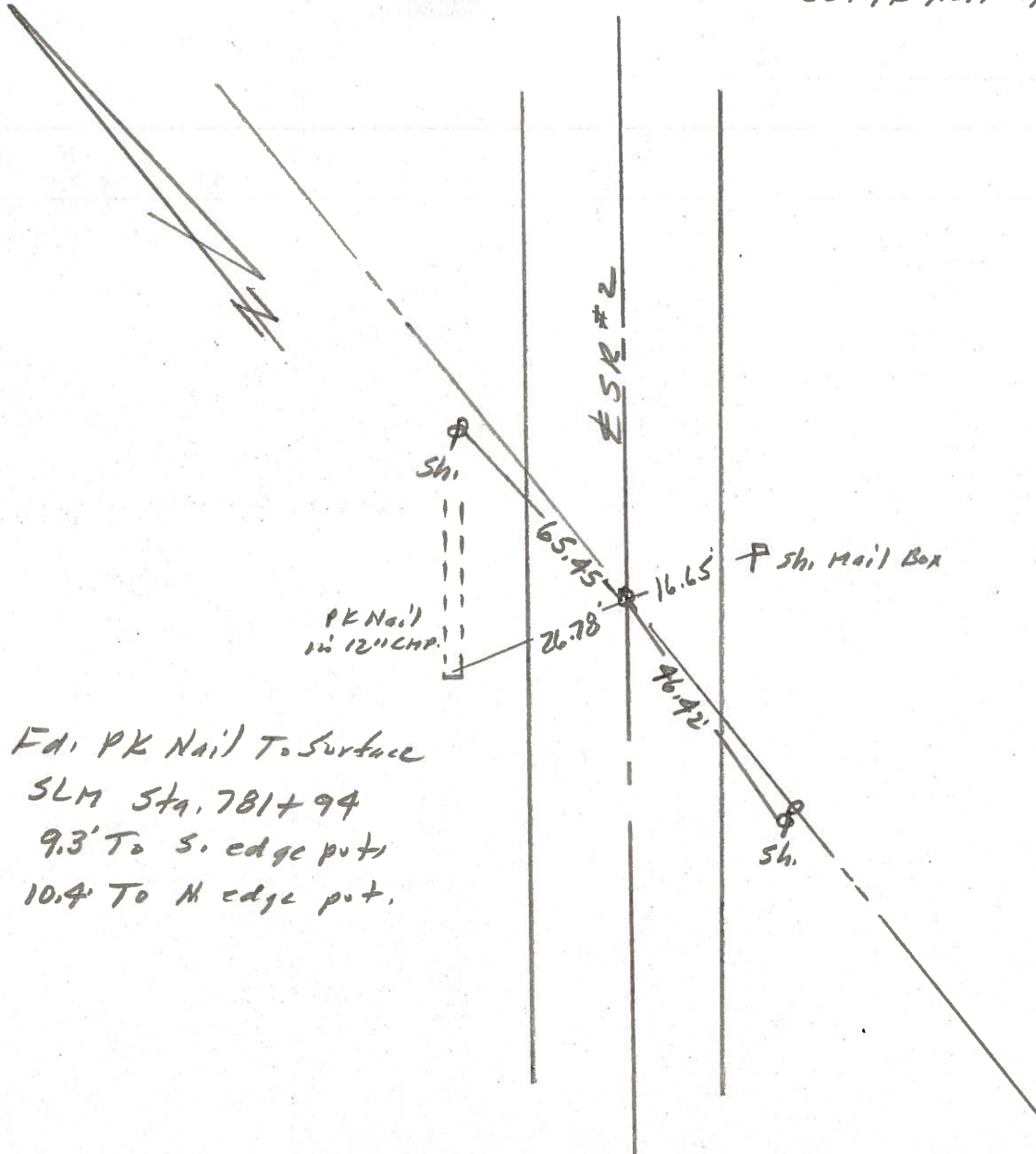
County Williams S.R. 2
 Township Springfield BRADY
 Section 33
 T N, R E
 Personnel I. Stone
P. Neuser
E. Michalak
D. Curtis

Date 12 Aug. 82
 Weather Warm
 Temp. 75°



REF. NO. **54-A**

Set PK Nail 1/26/83 IRS



Fd. PK Nail To Surface
 SLM Sta. 781+94
 9.3' To S. edge put.
 10.4' To N. edge put.