

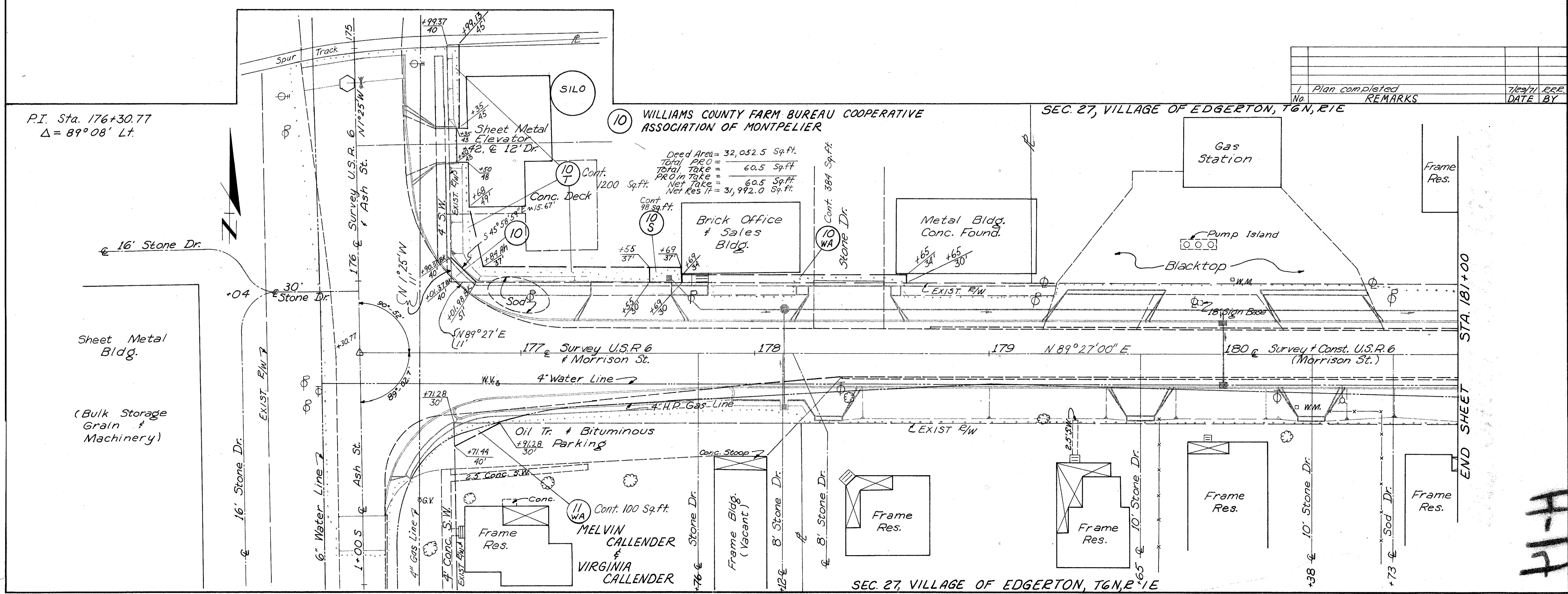
FED. RD. DIVISION	STATE	PROJECT
2	OHIO	

31
31

WIL-6-(3.17-3.42)

SUMMARY OF ADDITIONAL RIGHT-OF-WAY REQUIRED

PARCEL No.	OWNER	SHEET No.	DEED BOOK	RECORD PAGE	DEED AREA	TOTAL P.R.O.		TOTAL TAKE		P.R.O. IN TAKE		NET TAKE		BLDGs.	RESIDUE (LEFT)		RESIDUE (RIGHT)		REMARKS
						ACRES	Sq. Ft.	ACRES	Sq. Ft.	ACRES	Sq. Ft.	ACRES	Sq. Ft.		ACRES	Sq. Ft.	ACRES	Sq. Ft.	
10	Williams County Farm Bureau Cooperative Association of Montpelier	1	219	864	32,052.5 Sq.Ft.				60.5			60.5							
10T												1200.0							
10S												98.0							
10WA																			Repair drive & sidewalk - cont. 384 Sq.Ft.
11 WA	Melvin Callender & Virginia Callender	1	207	820	22,500 Sq.Ft.														Repair drive - cont 100 sq. ft.



Revised July 1977

R7206 #2 H-14

H-14