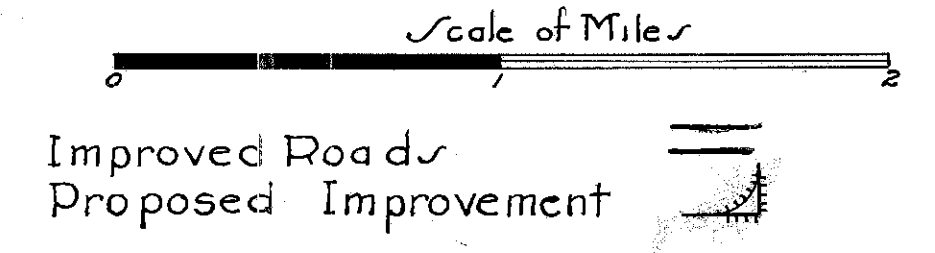
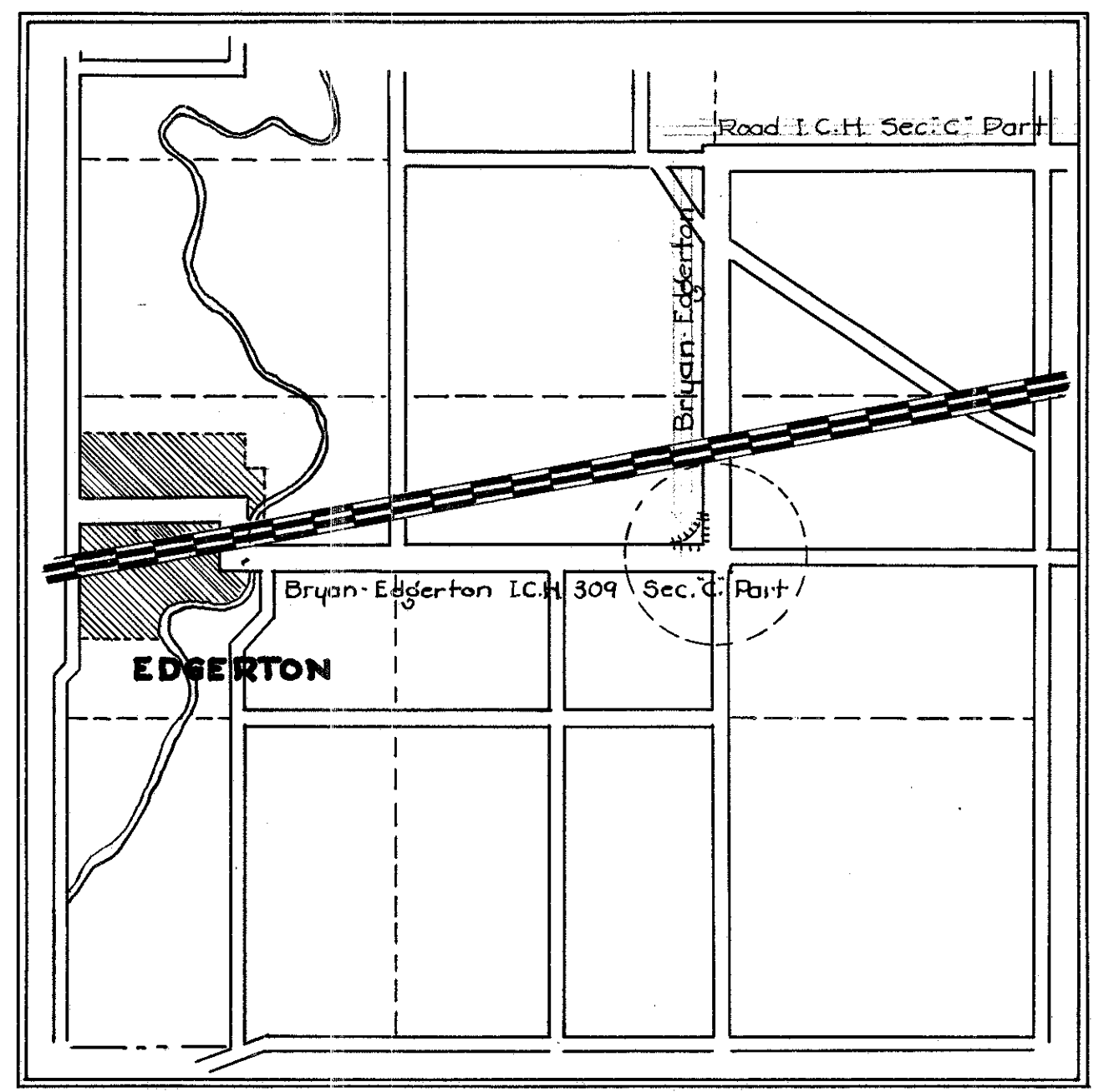


STATE OF OHIO DEPARTMENT OF HIGHWAYS RIGHT OF WAY PLANS BRYAN EDGERTON ROAD S.H. 309 SEC 'C' PART WILLIAMS COUNTY ST. JOSEPH TOWNSHIP

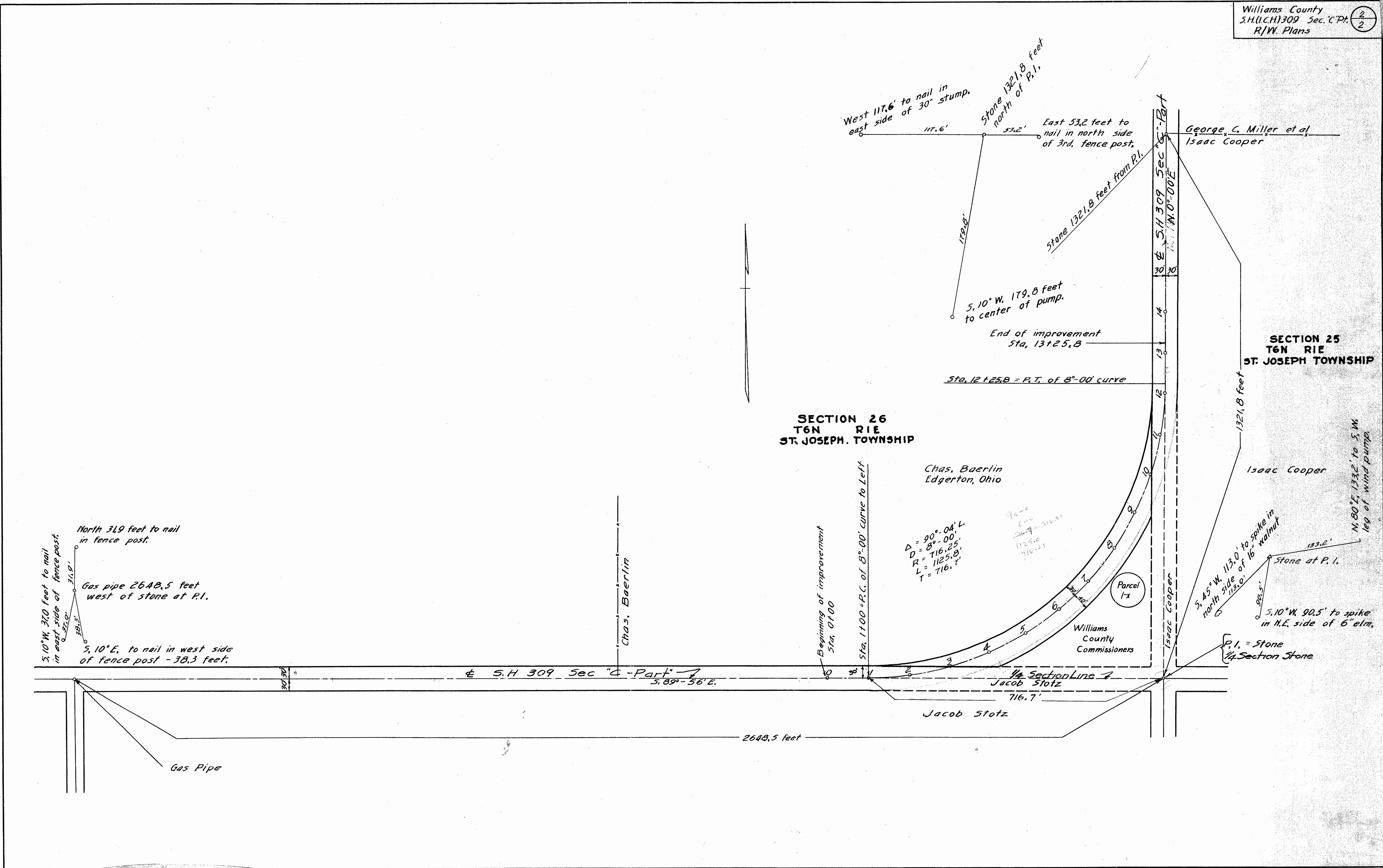
LOCATION PLAN



43-6
S.H. 309
S.H. 309

R7006
45
H-13

Second Part
July 1947



SECTION 26
T6N R1E
ST. JOSEPH TOWNSHIP

SECTION 25
T6N R1E
ST. JOSEPH TOWNSHIP

West 117.6' to nail in east side of 30" stump.
117.6'
Stone 1321.8 feet north of P.I.
53.2'
East 53.2 feet to nail in north side of 3rd. fence post.

179.8'
5.10° W, 179.8 feet to center of pump.

End of improvement
Sta. 13+25.8

Sta. 12+25.8 = P.T. of 8°-00' curve

$\Delta = 90^{\circ}-00'$
 $D = 8^{\circ}-00'$
 $R = 716.25'$
 $L = 1125.8'$
 $T = 716.7'$

Chas. Baerlin
Edgerton, Ohio

Williams
County
Commissioners

Parcel
1-x

North 369 feet to nail in fence post.
Gas pipe 2640.5 feet west of stone at P.I.
5.10° W, 370 feet to nail in east side of fence post.
31.9'
38.3'
37.0'
5.10° E. to nail in west side of fence post - 38.3 feet.

1321.8 feet
Isaac Cooper
S. 45° W, 113.0' to spike in north side of 16" walnut
133.2'
Stone at P.I.
5.10° W, 90.5' to spike in N.E. side of 6" elm.
90.5'
N. 80° E, 133.2' to S.W. leg of wind pump

P.I. = Stone
1/4 Section Stone

S.H. 309 Sec. C-Part
S. 89°-56' E.

1/4 Section Line
Jacob Stotz
716.7'

2640.5 feet

Gas Pipe