

O.D.O.T. DISTRICT 2 SURVEY OFFICE (USE ONLY)

PERSONNEL

REFERENCE NO. 1 A

SHEET 1 OF 44

NOTES RHOADES DATE 3/29/24

ROUTE US 6

H.C. RHOADES WEATHER SUNNY

COUNTY WILLIAMS

R.C. ASTON TEMP. 36°

TOWNSHIP ST JOSEPH

SECTION 31

DWG BY RHOADES PID PAVING TRAIN

T 6 N R 1 E

TYPE MONUMENT MAG/WASHER

ON SURFACE - ~~BELOW~~ ON

OFFSET \odot PAVEMENT 13.9' \mp : RT

14' TO RT EDGE PAVEMENT

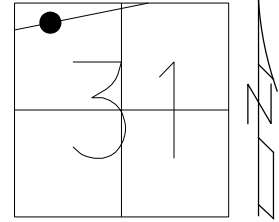
STATION: 9+30

HORZ. DATUM: NAD83 2011

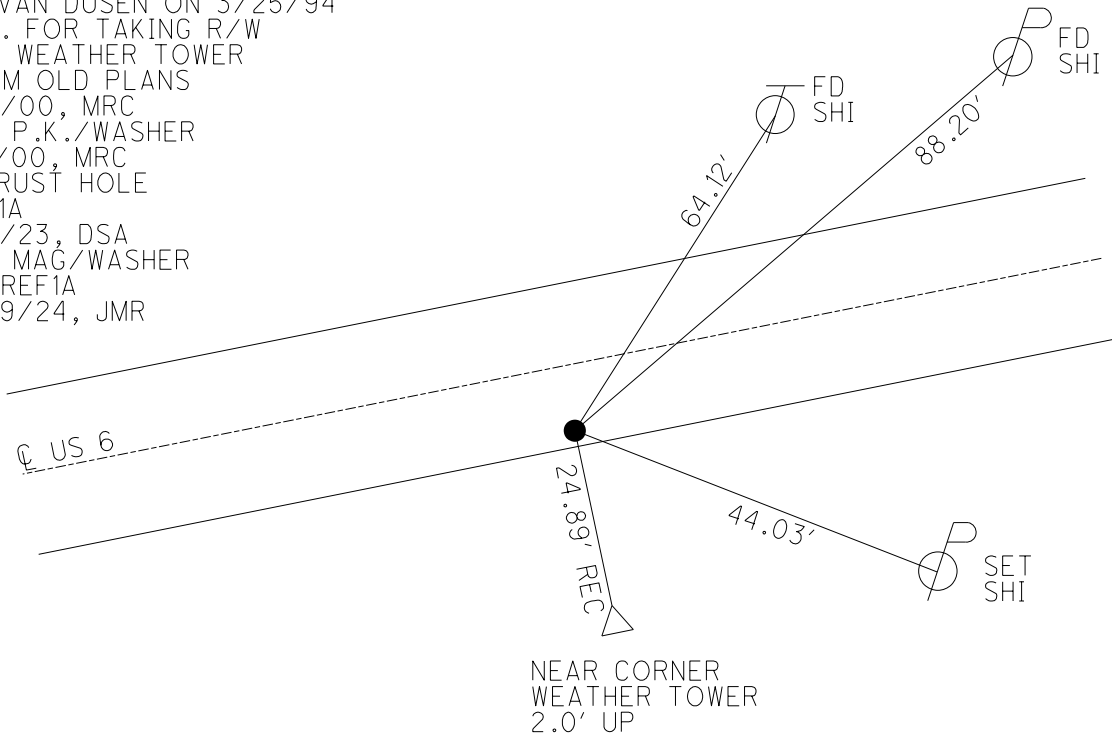
GEOID: NAVD88 2018

GRID: NORTHING: 654117.997

EASTING: 1337754.773



RECORD:
 SET NAIL/SHI
 EST. R/W OF US 6
 BY USING \odot OF NORTH
 SET OF R.R. TRACKS
 AS SHOWN ON PLANS
 3/25/94, VAN DUSEN
 THIS POINT EST.
 BY VAN DUSEN ON 3/25/94
 EST. FOR TAKING R/W
 FOR WEATHER TOWER
 FROM OLD PLANS
 5/3/00, MRC
 SET P.K./WASHER
 8/1/00, MRC
 FD RUST HOLE
 REF1A
 7/5/23, DSA
 SET MAG/WASHER
 NEWREF1A
 3/29/24, JMR



O.D.O.T. DISTRICT 2 SURVEY OFFICE (USE ONLY)

PERSONNEL _____ REFERENCE NO. 1 A SHEET 1 OF 44
 NOTES MOSE DATE 5/3/00 ROUTE US 6
 H.C. CANTERBURY WEATHER FAIR COUNTY WILLIAMS
 R.C. BARNHISEL TEMP. 68° TOWNSHIP ST JOSEPH
 SECTION 31
 DWG BY NIESE PID _____ T 6 N R 1 E

TYPE MONUMENT NAIL & SHI

ON SURFACE - ~~BELOW~~ ON

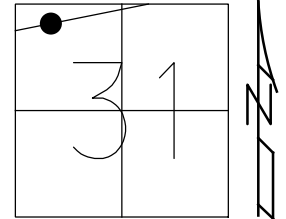
OFFSET \varnothing PAVEMENT 13.9' ~~RT~~ : RT

- TO - EDGE PAVEMENT

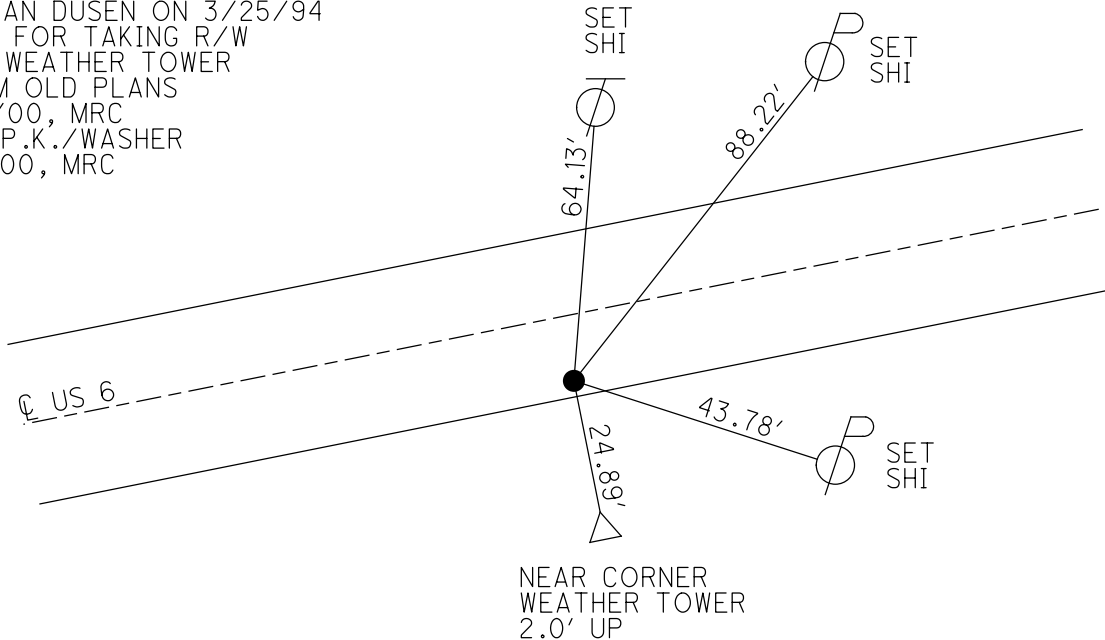
STATION: 9+30

HORZ. DATUM: _____ GEOID: _____

GRID: NORTHING: _____ EASTING: _____



RECORD:
 SET NAIL/SHI
 EST. R/W OF US 6
 BY USING \varnothing OF NORTH
 SET OF R.R. TRACKS
 AS SHOWN ON PLANS
 3/25/94, VAN DUSEN
 THIS POINT EST.
 BY VAN DUSEN ON 3/25/94
 EST. FOR TAKING R/W
 FOR WEATHER TOWER
 FROM OLD PLANS
 5/3/00, MRC
 SET P.K./WASHER
 8/1/00, MRC



O.D.O.T. DISTRICT 2 SURVEY OFFICE

PERSONNEL

REFERENCE NO. 1-A

SHEET 1 OF 32

NOTES MOSE

H.C. CANTERBURY

DATE 5-3-00

ROUTE US 6

R.C. BARNHISEL III

WEATHER FAIR

COUNTY WILLIAMS

TEMP. +68°

TOWNSHIP ST. Joseph

SECTION 31

T 6 N R 1 E

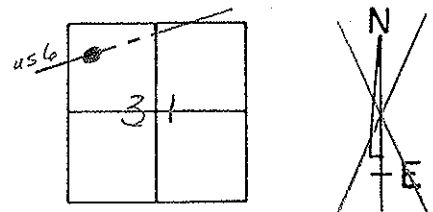
TYPE MONUMENT NAIL & SHINER

ON SURFACE - BELOW YES

LEFT - & PAW'T. - RIGHT 13.9'

1.3' TO DEPT EDGE PAVEMENT

S.L.M. 9+30



NOTE: THIS POINT EST. BY
VAN DUSEN 3-25-94.
EST. FOR STAKING R/W FOR
WEATHER TOWER FROM OLD PLANS.

RESET PK/WASHER
8-1-00
M.R.C.

