

O.D.O.T. DISTRICT 2 SURVEY OFFICE (USE ONLY)

PERSONNEL

REFERENCE NO. 3 A

SHEET 3 OF 44

NOTES RHOADES  
 H.C. RHOADES  
 R.C. WHITAKER

DATE 7/28/22  
 WEATHER CLEAR  
 TEMP. 71°

ROUTE US 6  
 COUNTY WILLIAMS  
 TOWNSHIP ST JOSEPH  
 SECTION 28

DWG BY RHOADES PID PAVETRAIN

T 6 N R 1 E

TYPE MONUMENT P.K.SHANK/WASHER

ON SURFACE - ~~BELOW~~ ON

OFFSET  $\text{C}$  PAVEMENT 0.7' LT : ~~RT~~  
13.2' TO RT EDGE PAVEMENT

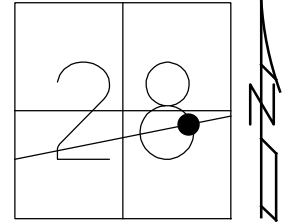
STATION: 143+74

HORZ.DATUM: NAD83 2011

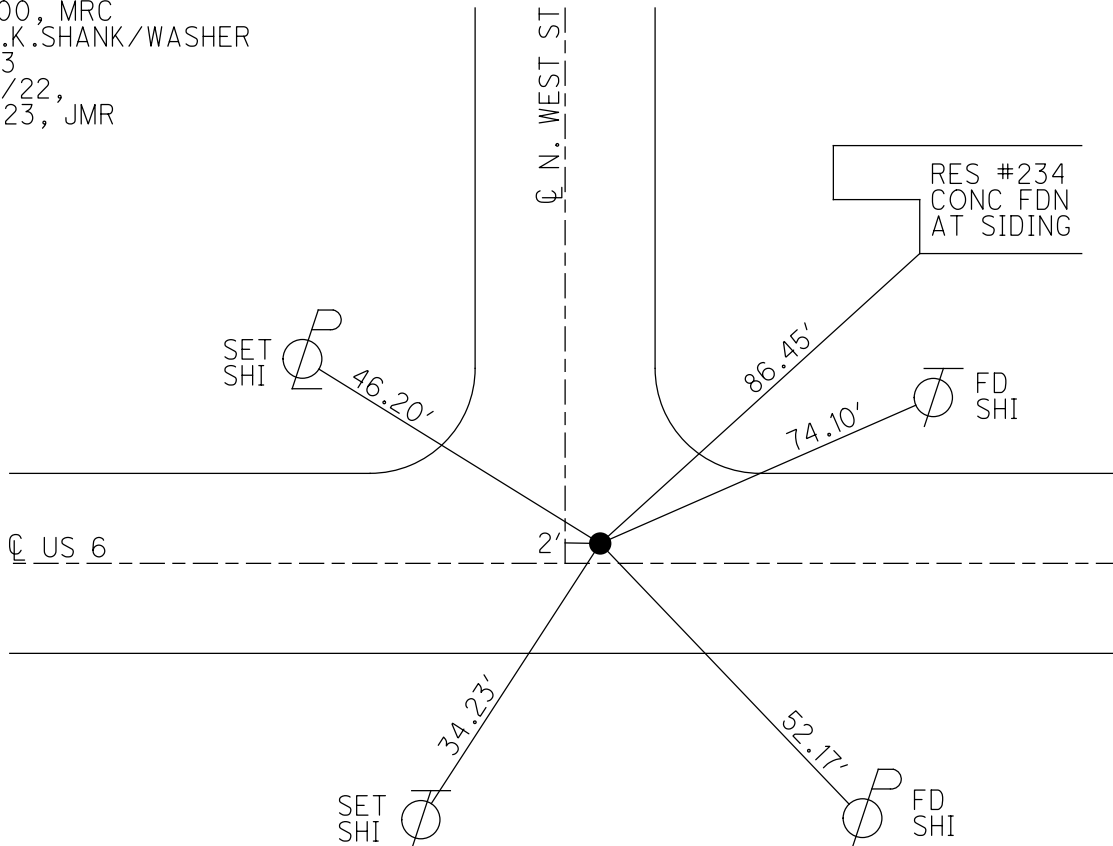
GEOID: NAVD88 2018

GRID: NORTHING: 656666.082

EASTING: 1350954.854



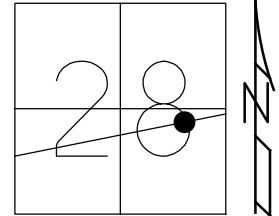
RECORD:  
 FD P.K./WASHER  
 5/3/00, MRC  
 SET P.K./WASHER  
 8/1/00, MRC  
 FD P.K.SHANK/WASHER  
 REFA3  
 7/28/22,  
 3/8/23, JMR



O.D.O.T. DISTRICT 2 SURVEY OFFICE (USE ONLY)

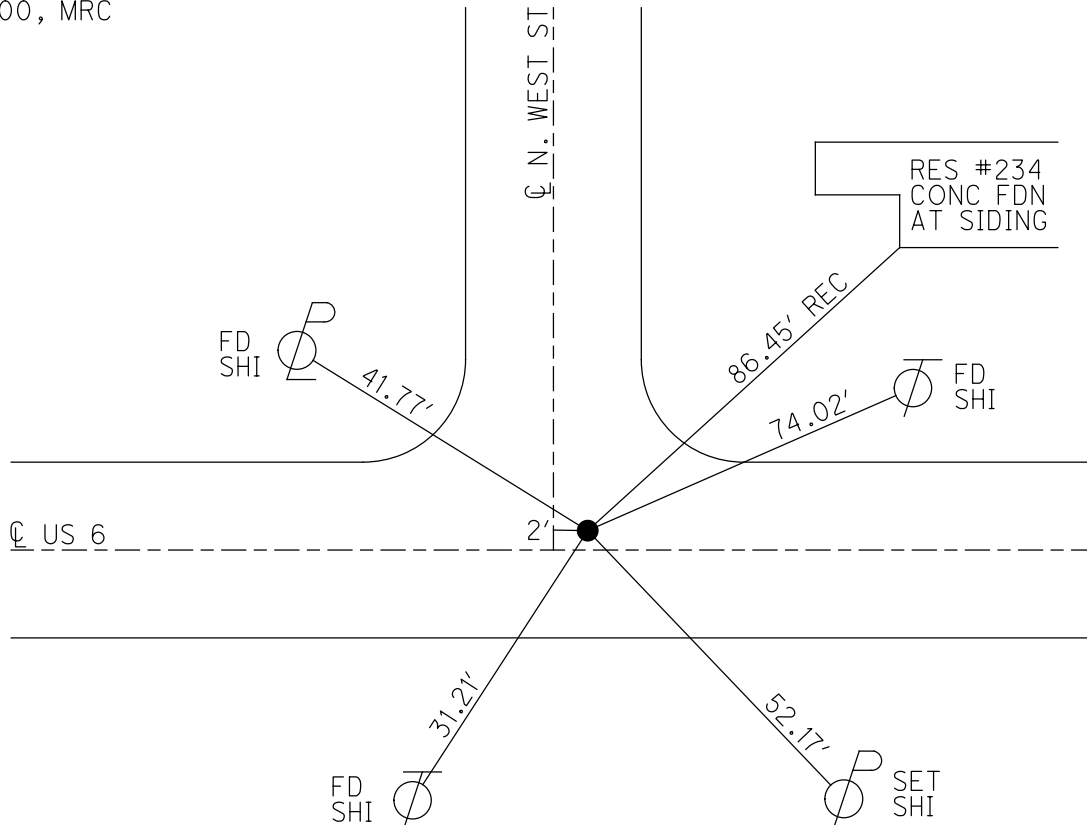
PERSONNEL \_\_\_\_\_ REFERENCE NO. 3 A SHEET 3 OF 44  
 NOTES CANTERBURY DATE 5/3/00 ROUTE US 6  
 H.C. MOSE WEATHER FAIR COUNTY WILLIAMS  
 R.C. BARNHISEL TEMP. 68° TOWNSHIP ST JOSEPH  
 SECTION 28  
 DWG BY NIESE PID \_\_\_\_\_ T 6 N R 1 E

TYPE MONUMENT P.K./WASHER  
 ON SURFACE - ~~BELOW~~ ON \_\_\_\_\_  
 OFFSET  $\odot$  PAVEMENT 0.7' LT : ~~RT~~  
13.2' TO RT EDGE PAVEMENT  
 STATION: 143+74



HORZ. DATUM: \_\_\_\_\_ GEOID: \_\_\_\_\_  
 GRID: NORTHING: \_\_\_\_\_ EASTING: \_\_\_\_\_

RECORD:  
 FD P.K./WASHER  
 5/3/00, MRC  
 SET P.K./WASHER  
 8/1/00, MRC



# O.D.O.T. DISTRICT 2 SURVEY OFFICE

PERSONNEL \_\_\_\_\_

REFERENCE NO. 3-A

SHEET 3 OF 32

NOTES CANTERBURY

H.C. MOSEK

DATE 5-3-00

ROUTE US 6

R.C. BARNISSEK JR

WEATHER FAIR

COUNTY WILLIAMS

TEMP. +68°

TOWNSHIP ST. JOSEPH

SECTION 28

T 6 N R 1 E

TYPE MONUMENT PK & WASHER

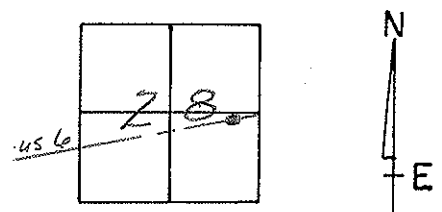
ON SURFACE - BELOW yes

LEFT-0 PAV'T. - RIGHT 0.7'

13.2' TO RT EDGE PAVEMENT

S.L.M. 143+74

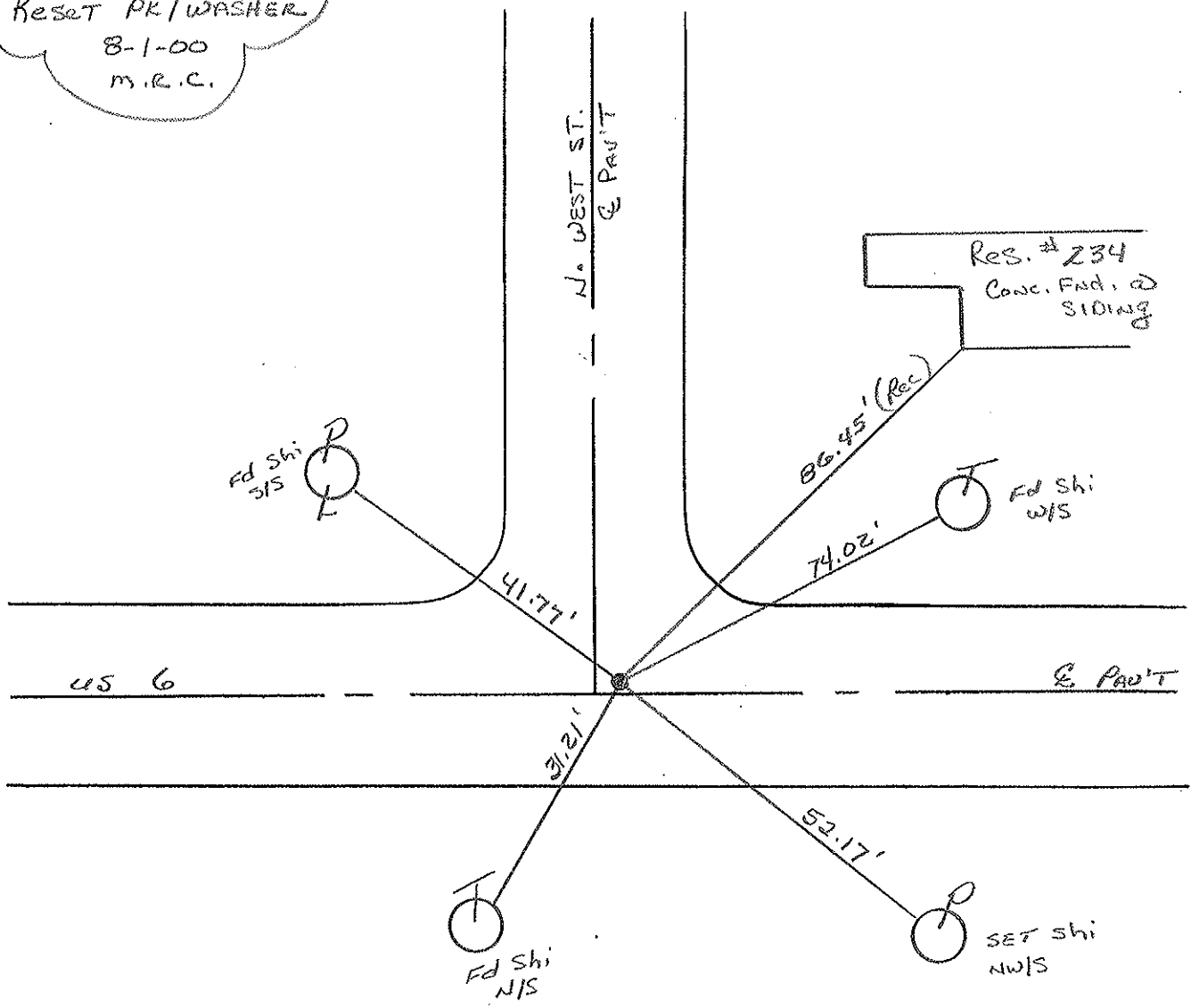
2' EAST OF E NORTH



Reset PK/WASHER

8-1-00

M.R.C.



# O.D.O.T. DISTRICT 2 SURVEY OFFICE

PERSONNEL \_\_\_\_\_

REFERENCE NO. \_\_\_\_\_

SHEET \_\_\_\_\_ OF \_\_\_\_\_

NOTES LOEHRS

H.C. Reed

R.C. BARNHPEL

DATE 4-11-88

WEATHER CLEAR

TEMP. +50

ROUTE U.S. 6

COUNTY WILLIAMS

TOWNSHIP ST. JOSEPH

SECTION 28

T 6 N R 1 E

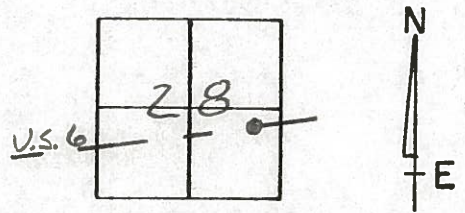
TYPE MONUMENT PK. WASHER 6-3-88  
~~Sm RR Spike~~

ON SURFACE ~~BELOW~~

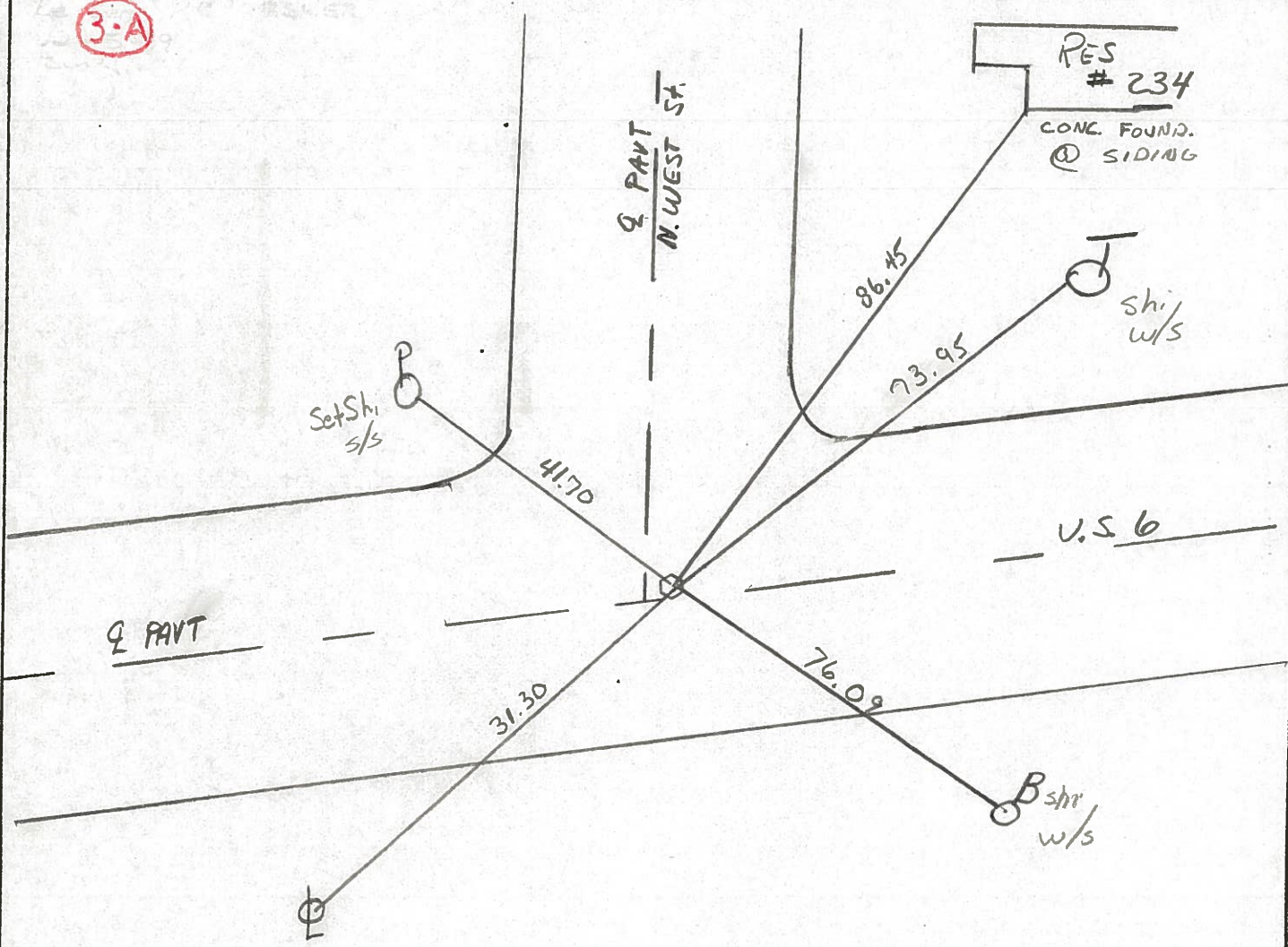
LEFT-C PAVT. RIGHT 1.0'

11.1 TO South EDGE PAVEMENT

S.L.M. 143+74



**3-A**



County Williams S.R., U.S. 6

Date 6-30-81

Township St. Joseph

Weather cloudy

Section 28 - W. Edgerton

Temp. +85°

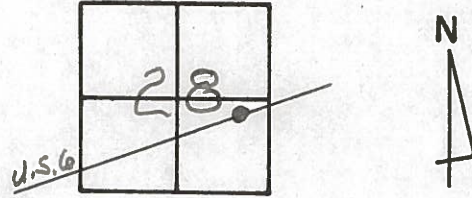
T6N, R1E

Personnel HOFFMAN

Loehrke

Householder

**3-1**



Fd. R.R. SPK 1/4" @ SURFACE  
@ ctr. of PAUT, U.S. 6

PROJECT STA. ±143+72

12.370 S.E.P.

SET SMALL R.R. SPK.  
11-4-81 - SWH

