

O.D.O.T. DISTRICT 2 SURVEY OFFICE (USE ONLY)

PERSONNEL

REFERENCE NO. 3 B

SHEET 1 OF 41

NOTES CANTERBURY

DATE 5/3/00

ROUTE US 6

H.C. MOSE

WEATHER FAIR

COUNTY WILLIAMS

R.C. BARNHISEL

TEMP. 68°

TOWNSHIP ST. JOSEPH

SECTION 28

DWG BY NIESE

PID 102827

T 6 N R 1 E

TYPE MONUMENT P.K./WASHER

ON SURFACE - BELOW ON

OFFSET \odot PAVEMENT 0.7' LT : ~~RT~~

13.4' TO RT EDGE PAVEMENT

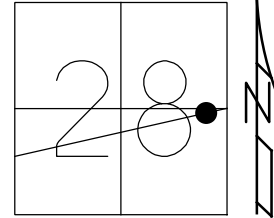
STATION: 150+13

HORZ.DATUM: -

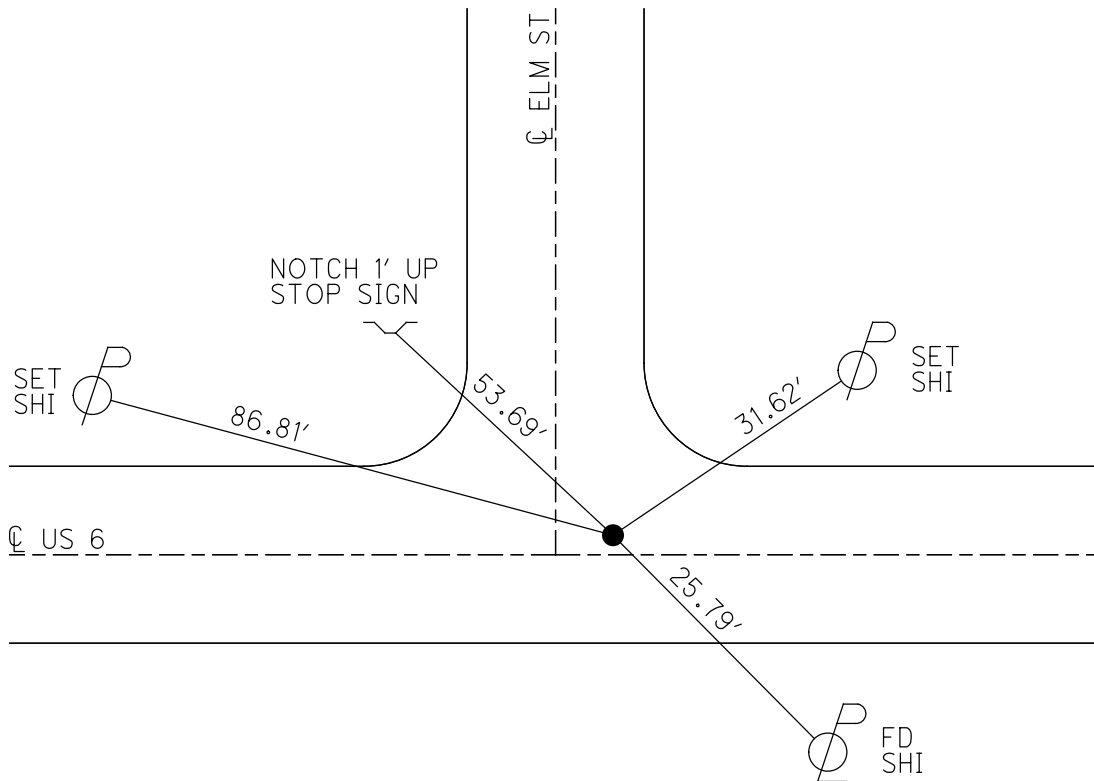
GEOID: -

GRID: NORTHING: -

EASTING: -



RECORD:
SET P.K./WASHER
8/1/00, MRC



O.D.O.T. DISTRICT 2 SURVEY OFFICE

PERSONNEL _____

REFERENCE NO. 3-B

SHEET 4 OF 32

NOTES CANTERBURY

H.C. MOSEK

DATE 5-3-00

ROUTE US 6

R.C. BARNHISEL III

WEATHER FAIR

COUNTY WILLIAMS

TEMP. +68°

TOWNSHIP St. Joseph

SECTION 28

T 6 N R 1 E

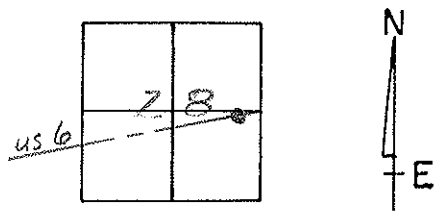
TYPE MONUMENT PK & WASHER

ON SURFACE - ~~BELOW~~ yes

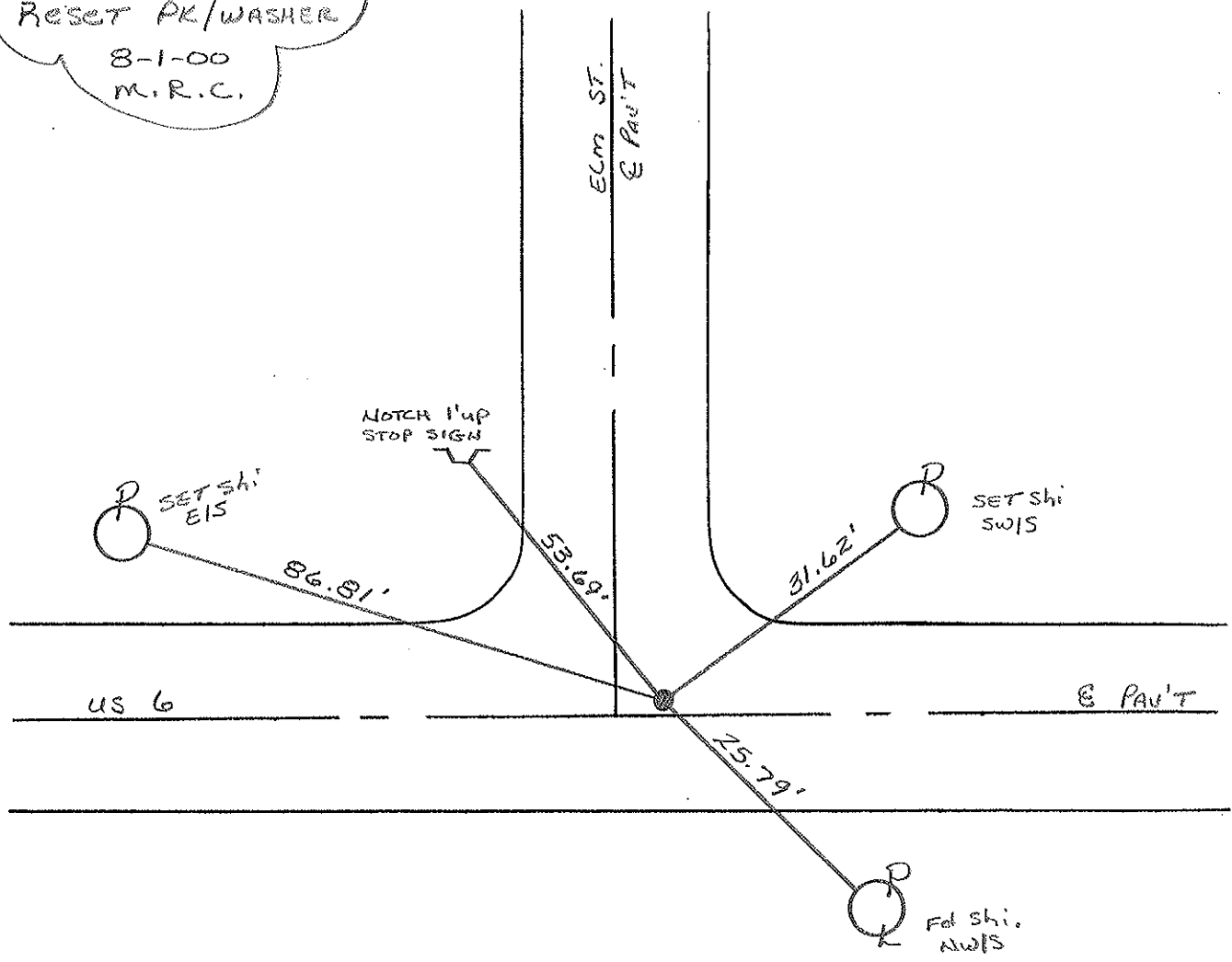
LEFT - ~~☉~~ PAV'T. - RIGHT 0.7'

13.4' TO RT EDGE PAVEMENT

S.L.M. 150+13 4' EAST OF E NORTH



RESET PK/WASHER
 8-1-00
 M.R.C.



O.D.O.T. DISTRICT 2 SURVEY OFFICE

PERSONNEL _____

REFERENCE NO. _____

SHEET 3 OF _____

NOTES LOEHR KE

H.C. Reed

R.C. BARNHISEL

DATE 4-11-88

WEATHER Clear

TEMP. +55

ROUTE U.S. 6

COUNTY WILLIAMS

TOWNSHIP ST JOSEPH

SECTION 28

T. 6 N. R. 1 E.

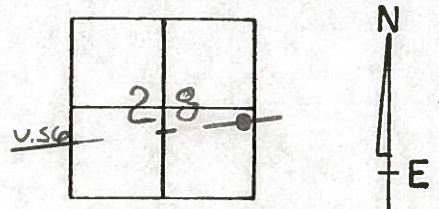
TYPE MONUMENT P.K. NAIL Reset 6-3-88

ON SURFACE - BELOW

LEFT - C PAV'T. - RIGHT 4.0E of Elm/0.4N of 6 &

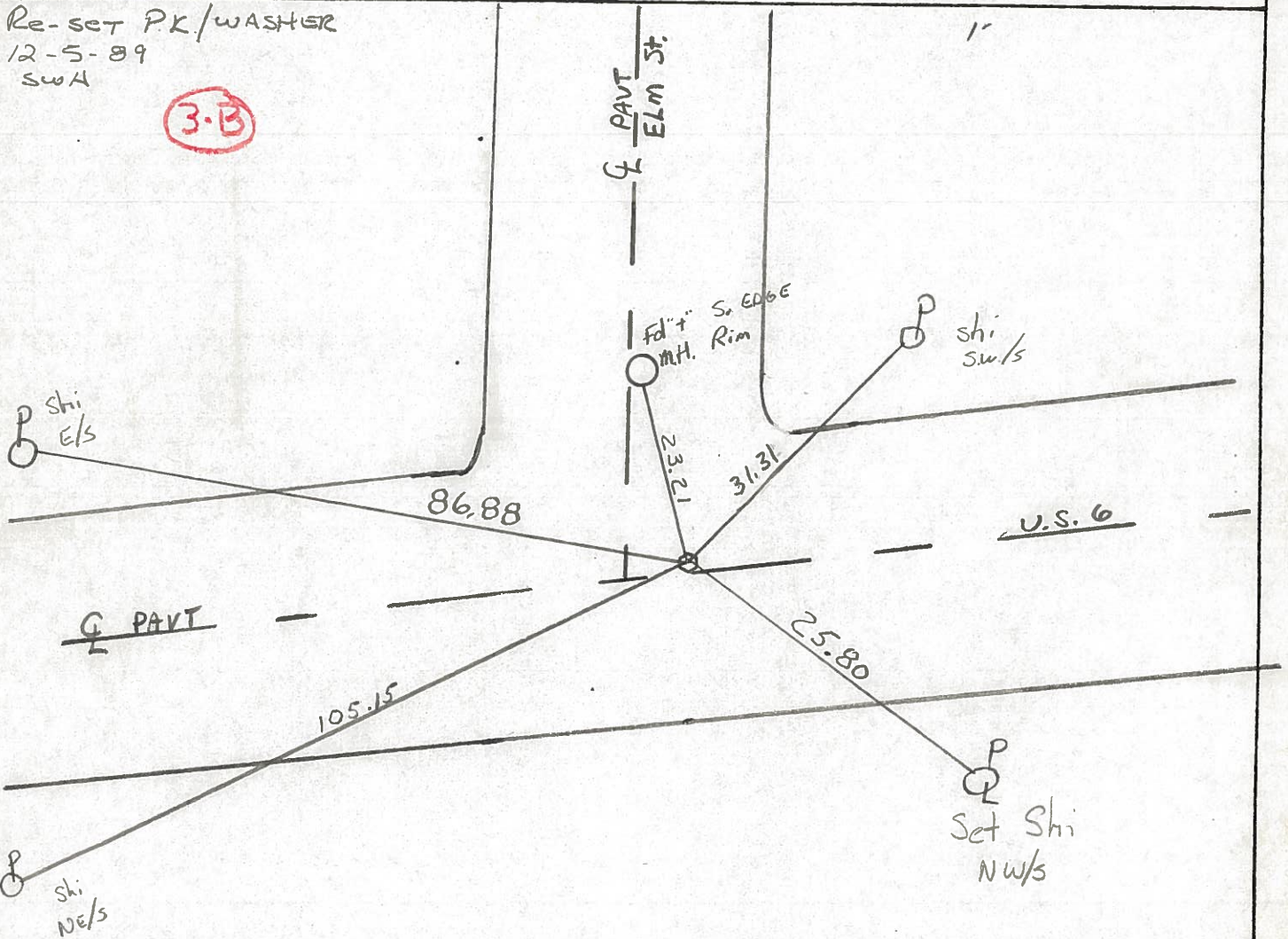
TO EDGE PAVEMENT

S.L.M. 150 + 13



Re-set P.K./WASHER
12-5-89
sw4

3-B



County Williams S.R.-U.S. 6

Date 6-30-81

Township St. Joseph

Weather cloudy

Section 28 - in Edgerton

Temp. +90°

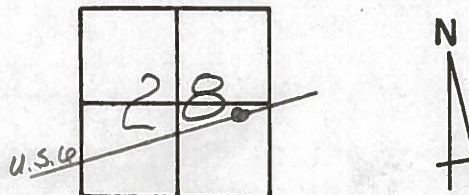
T&N, RLE

Personnel HOFFMAN

Loehrke

Householder

3-B



Fd. P.K. Nail @ SURFACE

PROJECT STA ± 150 + 14

0.7' N. of & PAUT, U.S. 6

SET P.K./WASHER

12.6 to S.E.P. U.S. 6

11-4-81 SWK

4.1' E of & PAUT, ELM ST.

