

O.D.O.T. DISTRICT 2 SURVEY OFFICE (USE ONLY)

PERSONNEL

REFERENCE NO. 4 A

SHEET 3 OF 41

NOTES TRENKA

DATE 7/16/18

ROUTE US 6

H.C. LEU

WEATHER CLOUDY

COUNTY WILLIAMS

R.C. HAGEMeyer

TEMP. 75°

TOWNSHIP ST. JOSEPH

SECTION 28

DWG BY NIESE

PID 102827

T 6 N R 1 E

TYPE MONUMENT SQUARE BOLT

~~ON SURFACE~~ - BELOW 2"

OFFSET \odot PAVEMENT ON LT : RT

- TO - EDGE PAVEMENT

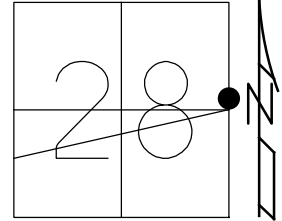
STATION: 160+04.29

HORZ.DATUM: NAD83 2011

GEOID: NAVD88 2012A

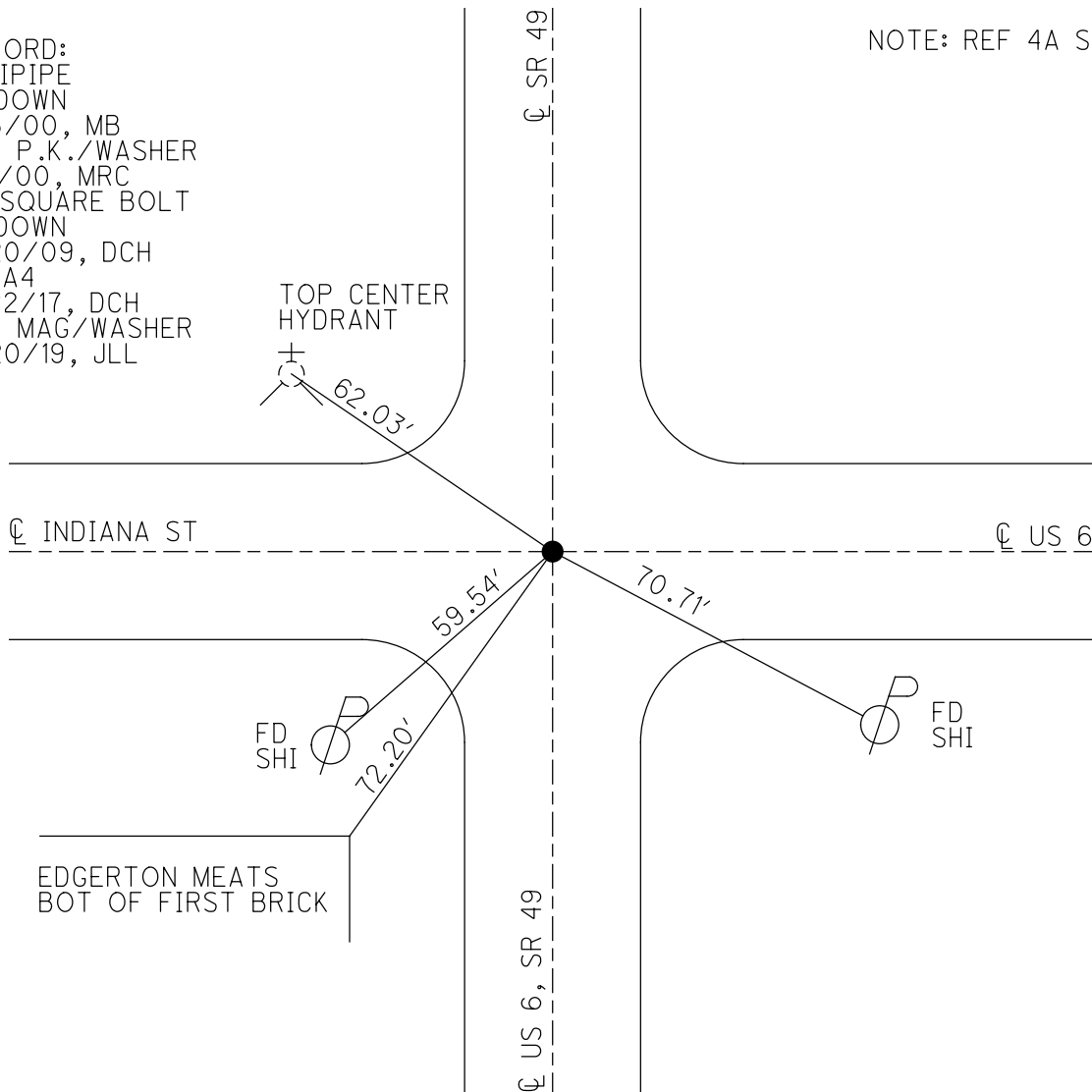
GRID: NORTHING: 657208.930

EASTING: 1352276.872



RECORD:
 FD IPIPE
 4" DOWN
 5/3/00, MB
 SET P.K./WASHER
 8/1/00, MRC
 FD SQUARE BOLT
 2" DOWN
 5/20/09, DCH
 REFA4
 2/22/17, DCH
 SET MAG/WASHER
 9/20/19, JLL

NOTE: REF 4A SR 49



O.D.O.T. DISTRICT 2 SURVEY OFFICE

PERSONNEL

REFERENCE NO. 4-A

SHEET 6 OF 32

NOTES CANTERBURY

H.C. MOSEER

R.C. BARNHISEL III

DATE 5-3-00

WEATHER FAIR

TEMP. +68°

ROUTE US 6

COUNTY WILLIAMS

TOWNSHIP St. Joseph

SECTION 28

T 6 N R 1 E

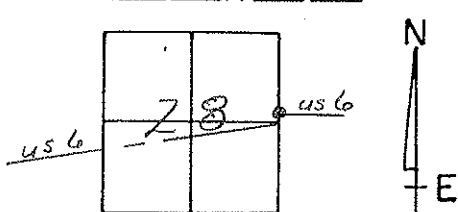
TYPE MONUMENT IRON PIPE

ON SURFACE - BELOW 4"

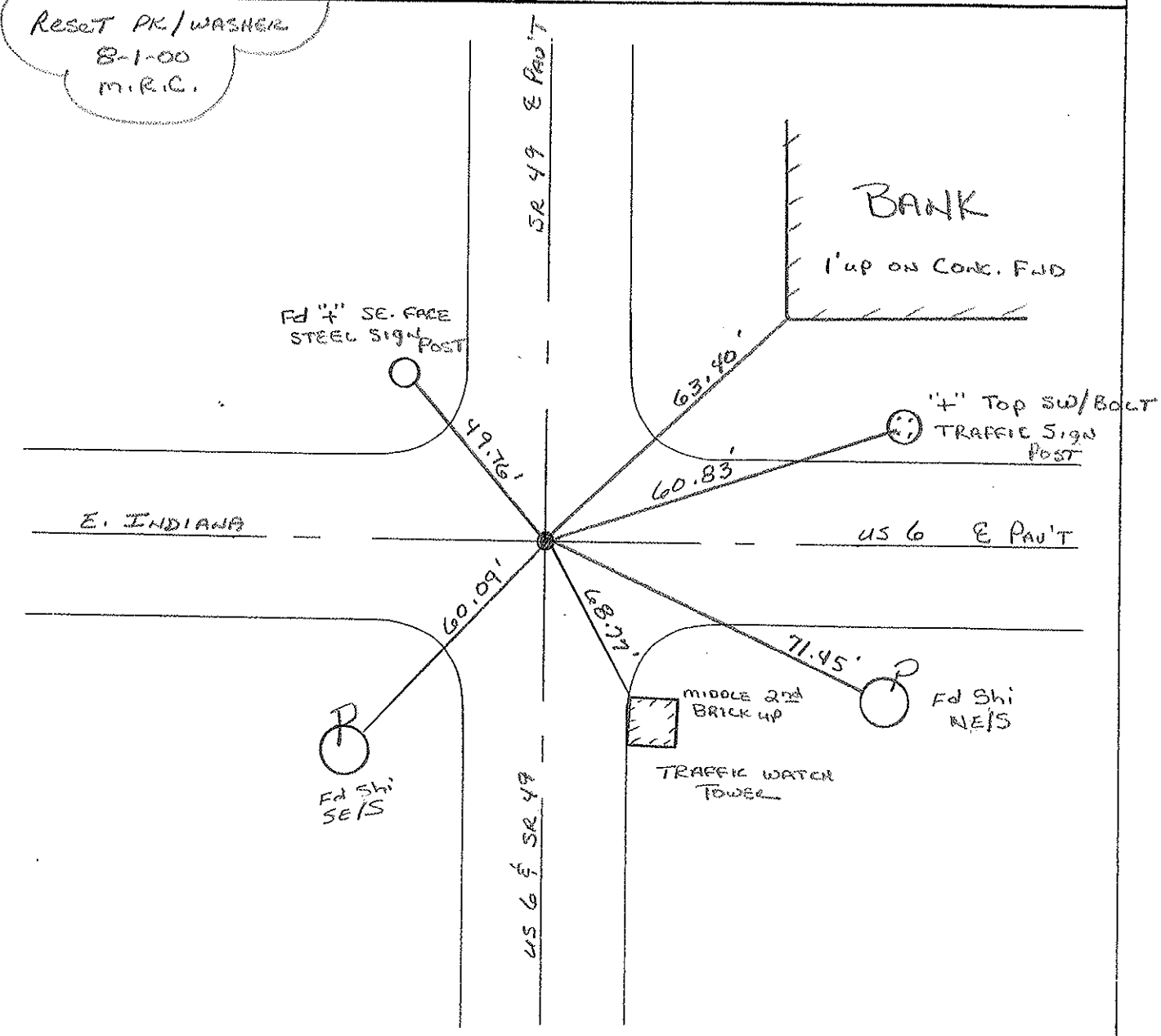
LEFT - & PAV'T. - RIGHT BOTH

TO EDGE PAVEMENT

S.L.M. 160+06



Reset PK/WASHER
8-1-00
M.R.C.



O.D.O.T. DISTRICT 2 SURVEY OFFICE

PERSONNEL _____

REFERENCE NO. _____

SHEET _____ OF _____

NOTES LOGHRKE

H.C. Reed

R.C. BARNHISEL

DATE 4-11-88

WEATHER Pt Cloudy

TEMP. +55

ROUTE U.S. 6

COUNTY WILLIAMS

TOWNSHIP St. JOSEPH

SECTION 28

T 6 N R 1 E

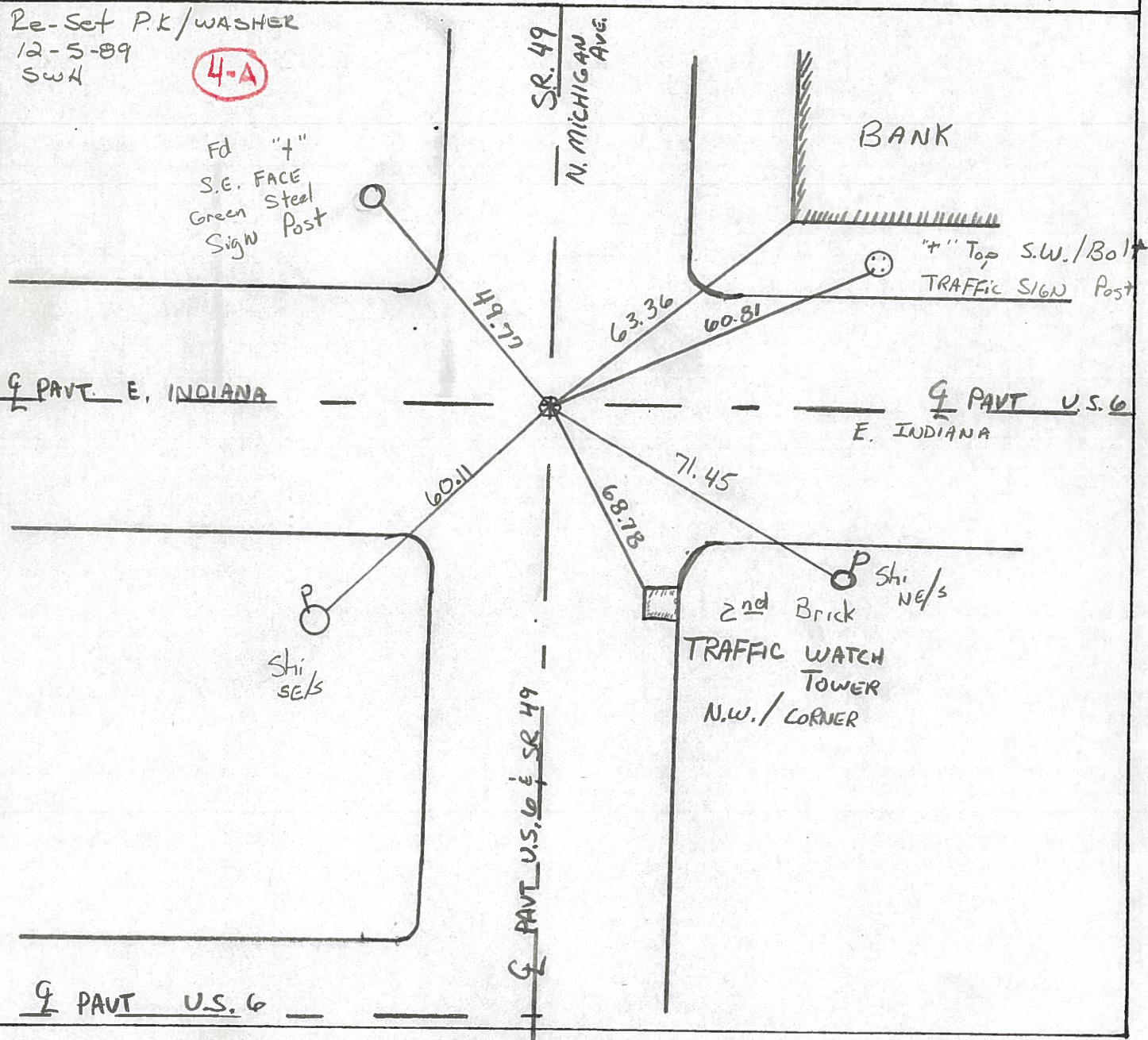
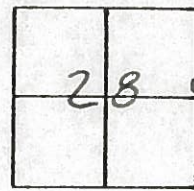
TYPE MONUMENT Reset PK. & WASHER 6-688 C.L.
Sm RR Spike

ON SURFACE - BELOW

~~LEFT~~ - C PAV'T. - ~~RIGHT~~ Both - PAVT

TO EDGE PAVEMENT

S.L.M. 160406



County Williams S.R. U.S. 6

Date 7-15-81

Township St. Joseph

Weather P. Cloudy

Section 28 - IN Edgerton

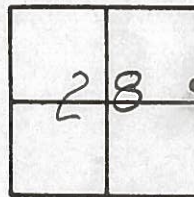
Temp. +65°

T6N, R1E

Personnel HOFFMAN

Loehrke

Householder



(4-A)

Fd. 1" IRON PIPE 2" Below SURFACE
@ CTR. of ALL PAUTS.

Project STA ± 160+07

SET SMALL R.R. SPK.
11-4-81 SWH

Green
"+" SE/FACE steel
Sign Post

Edgerton STATE BANK

use sub/cor 6" up

"+" top of sub/cor
TRAFFIC SIGNAL Pole

