

O.D.O.T. DISTRICT 2 SURVEY OFFICE (USE ONLY)

PERSONNEL _____ REFERENCE NO. 4 C SHEET 5 OF 41
 NOTES AUBLE DATE 9/20/19 ROUTE US 6
 H.C. LEU WEATHER SUNNY COUNTY WILLIAMS
 R.C. NASON TEMP. 61° TOWNSHIP ST. JOSEPH
 DWG BY NIESE PID 102827 SECTION 27
 T 6 N R 1 E

TYPE MONUMENT 1 3/4" DIA BOLT

~~ON SURFACE~~ - BELOW 5 1/2"

OFFSET C PAVEMENT ON LT : RT

- TO - EDGE PAVEMENT

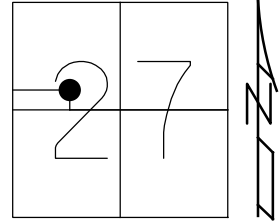
STATION: 173+75.01

HORZ.DATUM: NAD83 2011

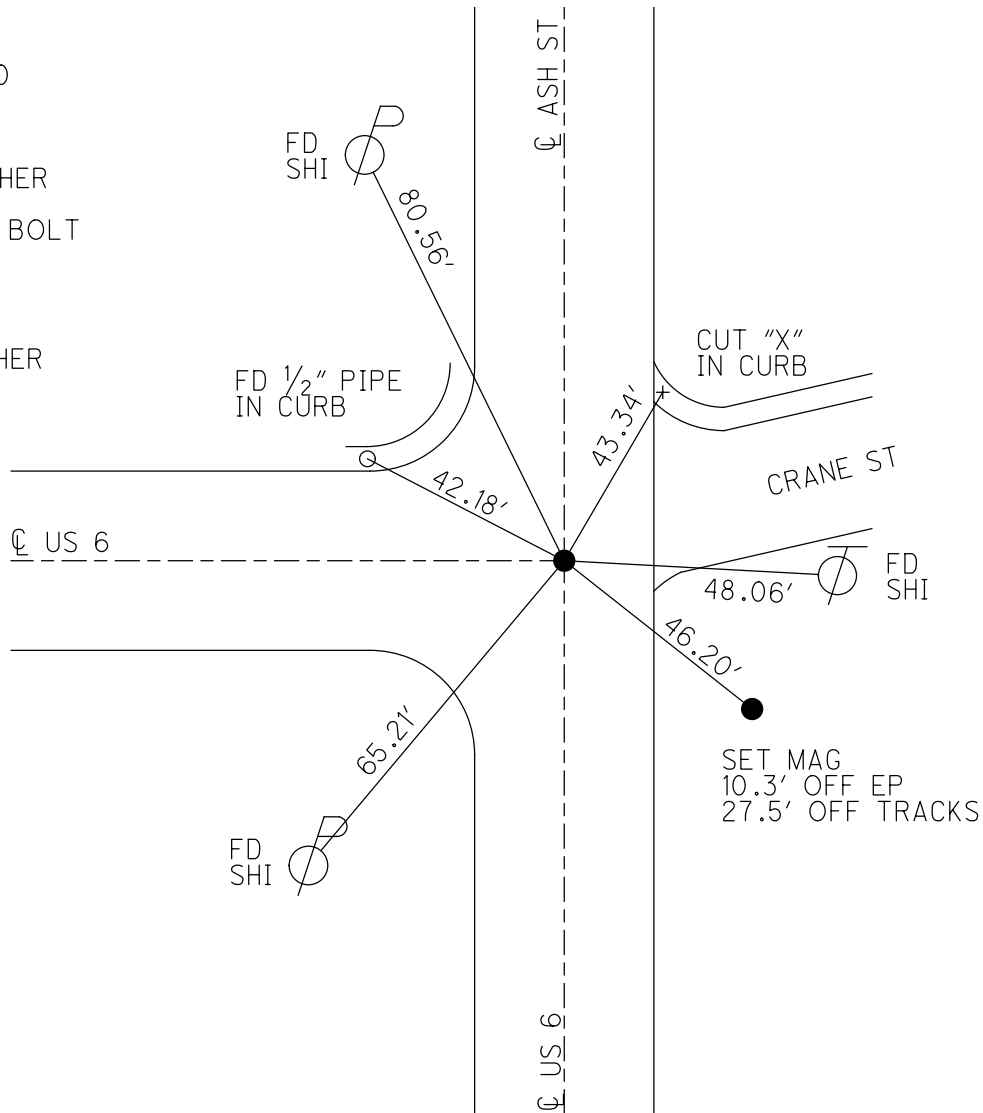
GEOID: NAVD88 2012A

GRID: NORTHING: 657182.633

EASTING: 1353647.231



RECORD: P.I.
 STA 173+80.90
 FD P.K.NAIL
 3" DOWN
 5/3/00, MB
 SET P.K./WASHER
 8/1/00, MRC
 FD 1 3/4" DIA BOLT
 5 1/2" DOWN
 REFC4
 2/22/17, DCH
 7/16/18, JLL
 SET MAG/WASHER
 9/20/19, JLL



O.D.O.T. DISTRICT 2 SURVEY OFFICE

PERSONNEL _____

REFERENCE NO. 4-C

SHEET 8 OF 32

NOTES CANTERBURY

H.C. MOSEK

DATE 5-3-00

ROUTE US 6

R.C. BARWISEL III

WEATHER FAIR

COUNTY WILLIAMS

TEMP. +68°

TOWNSHIP ST. Joseph

SECTION 27

T 6 N R 1 E

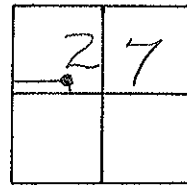
TYPE MONUMENT PK NAIL

ON SURFACE - BELOW 3"

LEFT - C PAV'T. - RIGHT NORTH & WEST

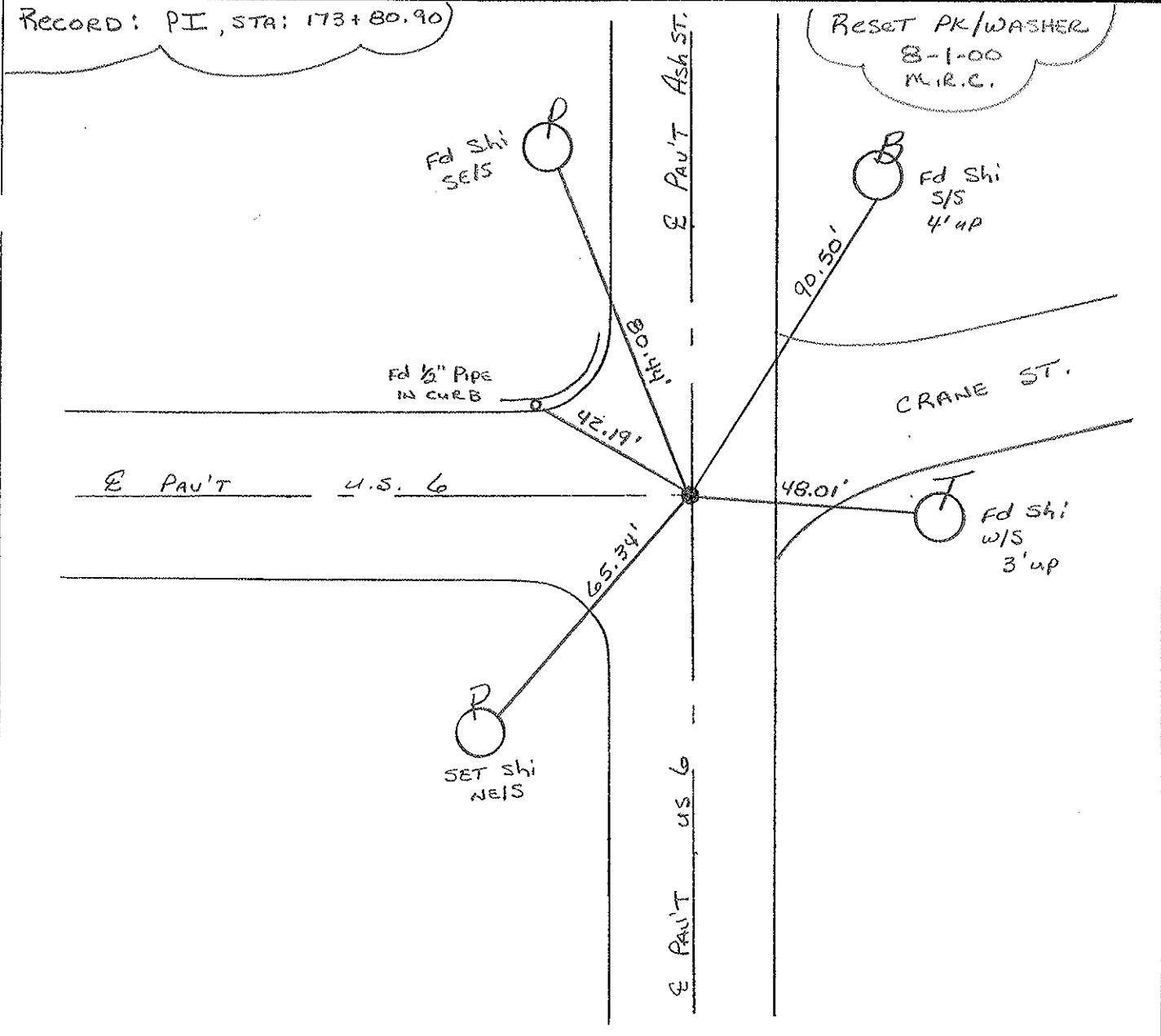
- TO - EDGE PAVEMENT

S.L.M. 173+75



Record: PI, STA: 173+80.90

RESET PK/WASHER
8-1-00
M.R.C.



O.D.O.T. DISTRICT 2 SURVEY OFFICE

PERSONNEL

REFERENCE NO. _____

SHEET _____ OF _____

NOTES LOEHRYE

H.C. REED

R.C. BARANISEL

DATE 4-11-88

WEATHER pt Cloudy

TEMP. +55

ROUTE U.S. 6

COUNTY WILLIAMS

TOWNSHIP St. JOSEPH

SECTION 27

T 6 N R 1 E

Set P.K. & WASHER 6-6-88

P.K. NAIL

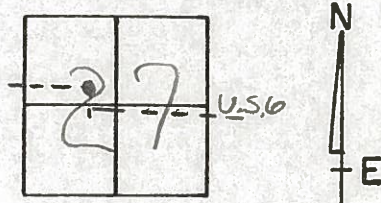
TYPE MONUMENT _____

ON SURFACE - BELOW 1"

LEFT - C PAV'T. - RIGHT Both PAV'T'S

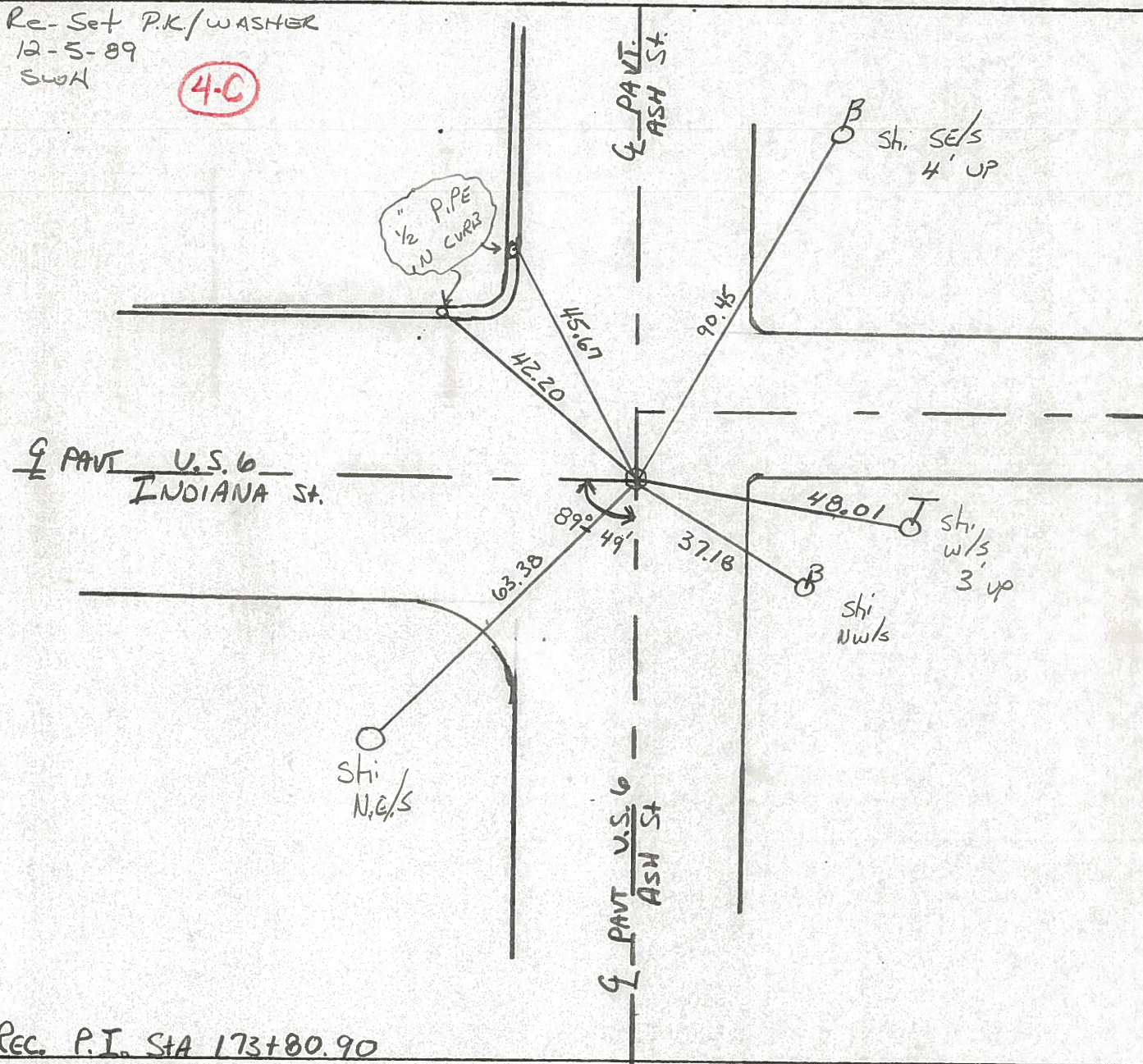
TO EDGE PAVEMENT

S.L.M. 173 + 75



Re-Set P.K./WASHER
12-5-89
SWH

4-C



Rec. P.I. STA 173+80.90

County WILLIAMS S.R. U.S. 6

Date 7-15-81

Township St. Joseph

Weather P. Cloudy

Section 27 - IN Edgerton

Temp. +65°

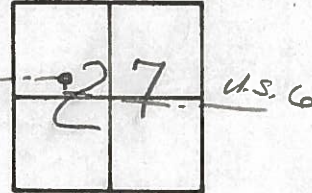
T6N, R1E

Personnel HOFFMAN

Loehrke

Householder

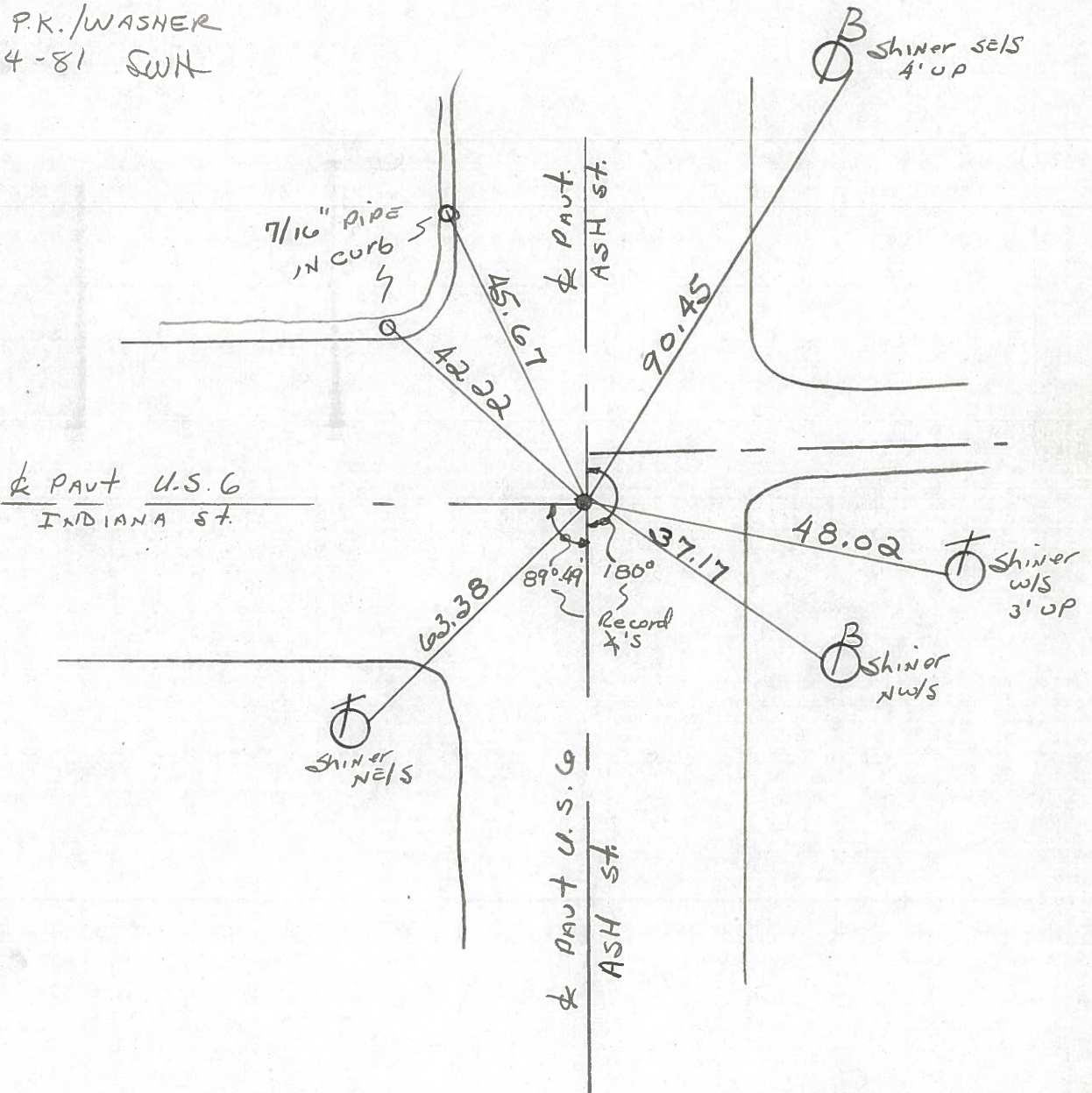
4.0



Fd. P.K. @ SURFACE
@ ctr. of PAUTS.

PROJECT STA. 173+77

SET P.K./WASHER
11-4-81 SWH



P. I. STA. 173+80.90 ~ Rec.

PERSONNEL TITLE PERSONNEL TITLE

Red Beach
Newcomb
Knape

COUNTY Wms

DATE June 1972

S. R. US 6

WEATHER _____

SEC. Edgerton

TEMP. _____

DESCRIPTION

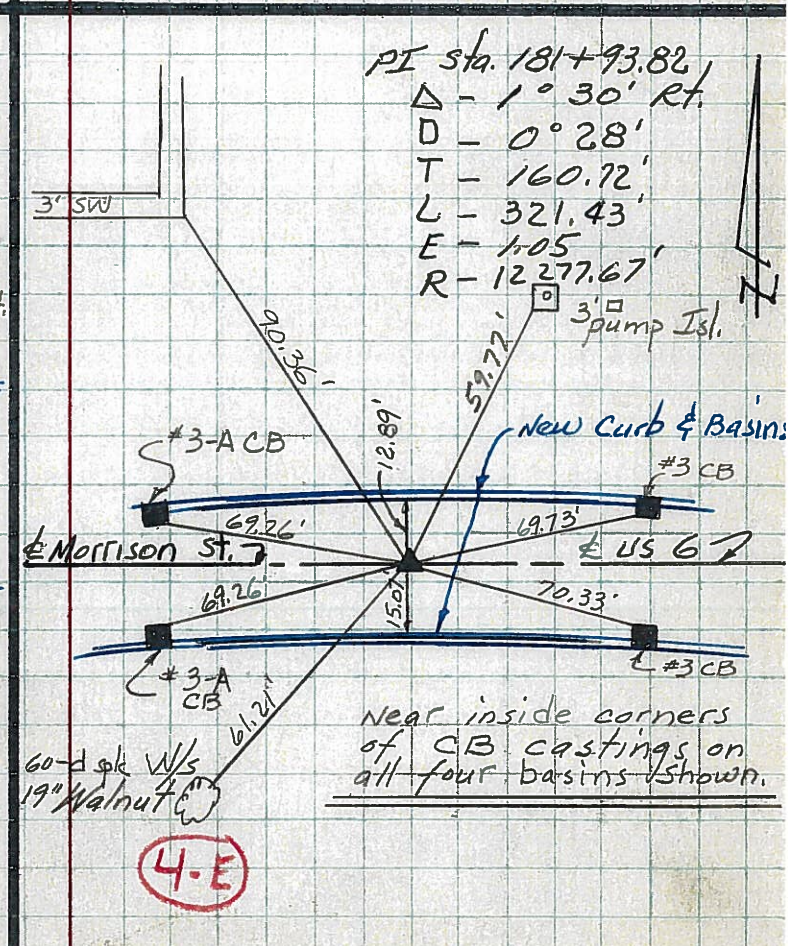
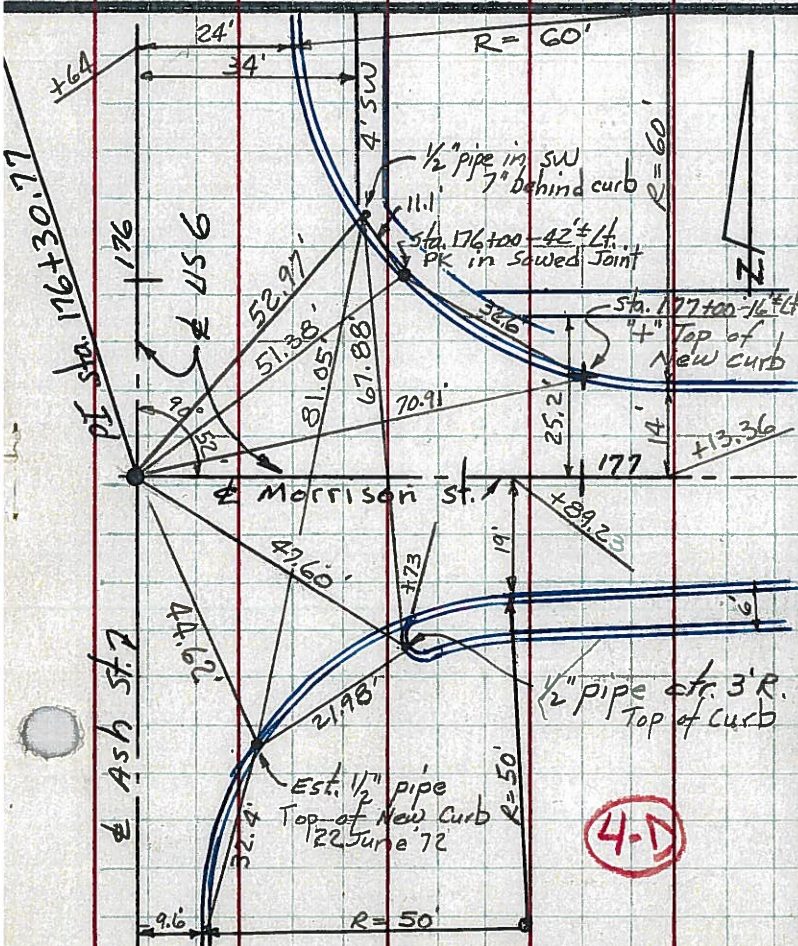
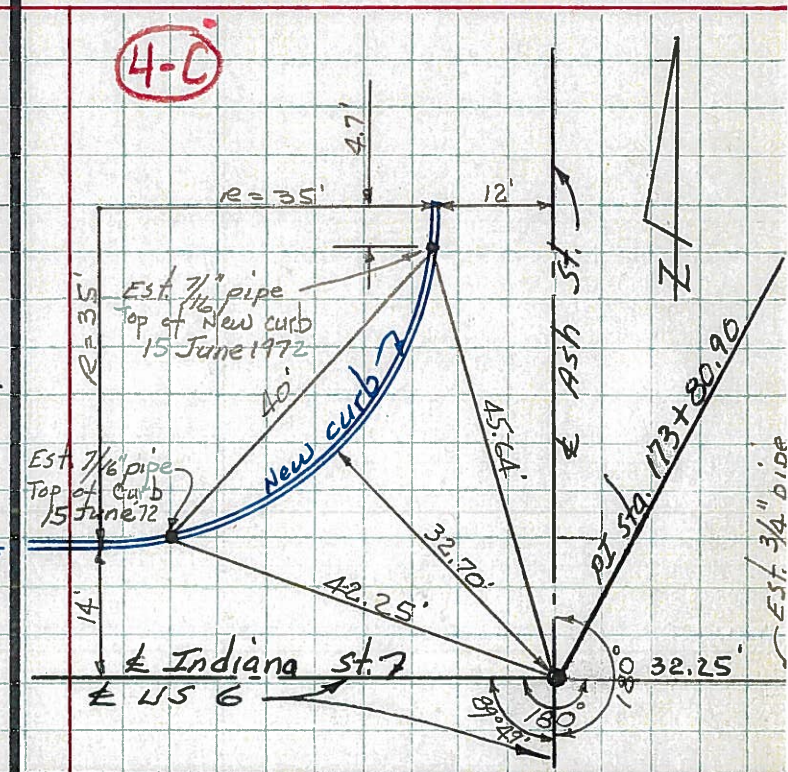
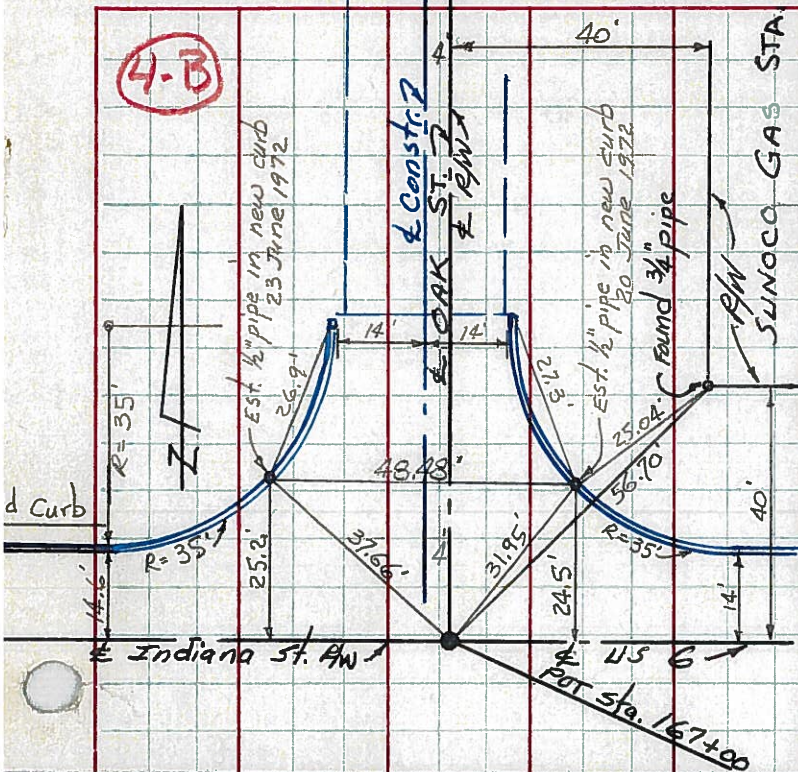
New CONTROL POINT Witnesses

JOB NO. _____

LEFT

CENTER LINE

RIGHT



PERSONNEL TITLE PERSONNEL TITLE

Red Beach
Newscomb
Knappe

COUNTY Wms

DATE June 1972

S. R. US 6

WEATHER _____

SEC. Edgerton

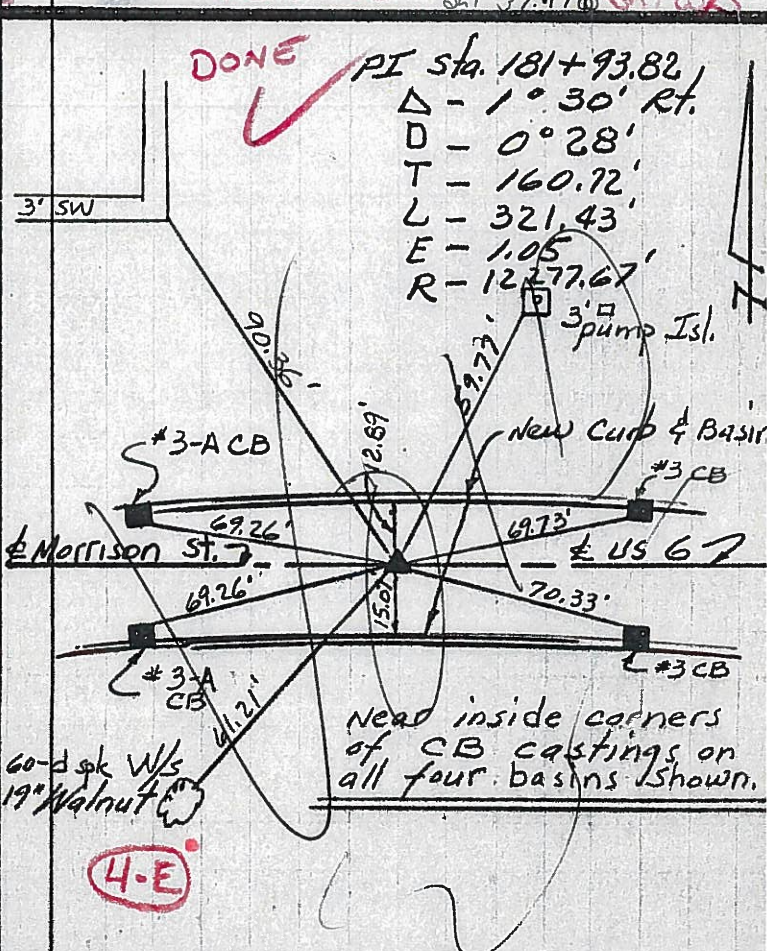
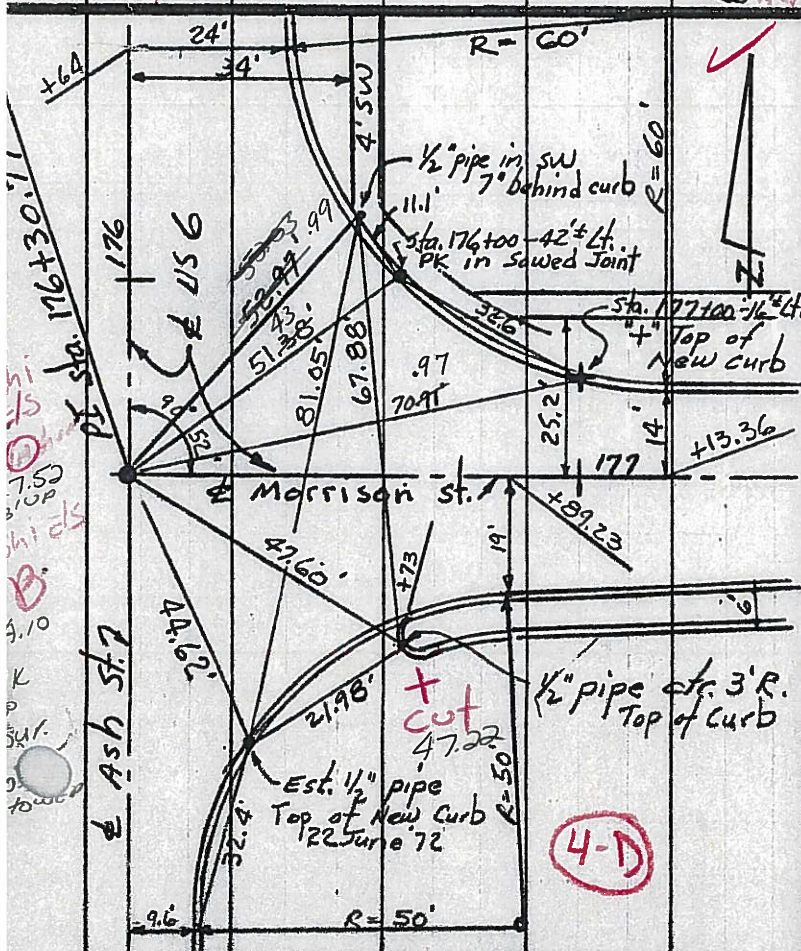
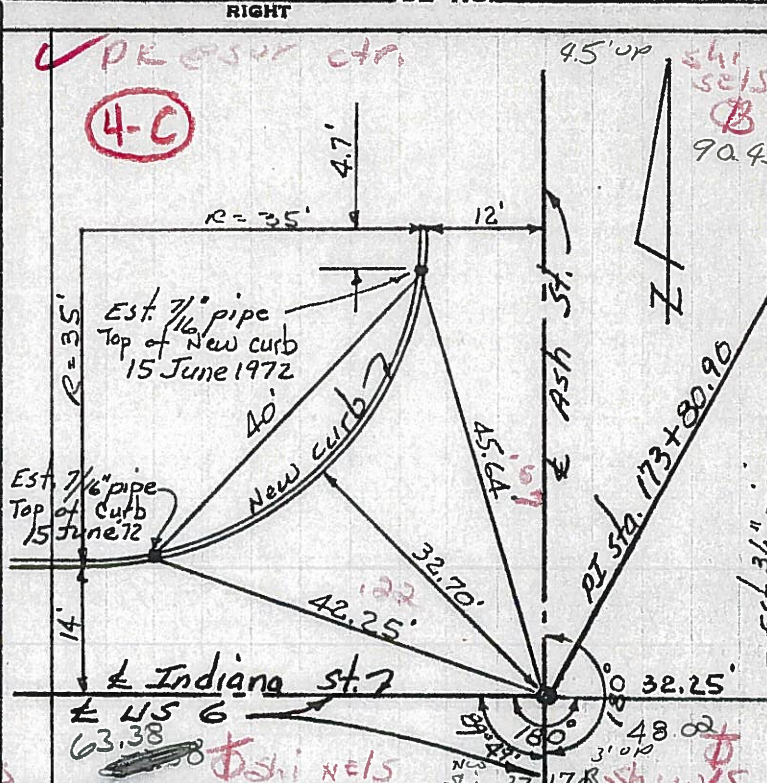
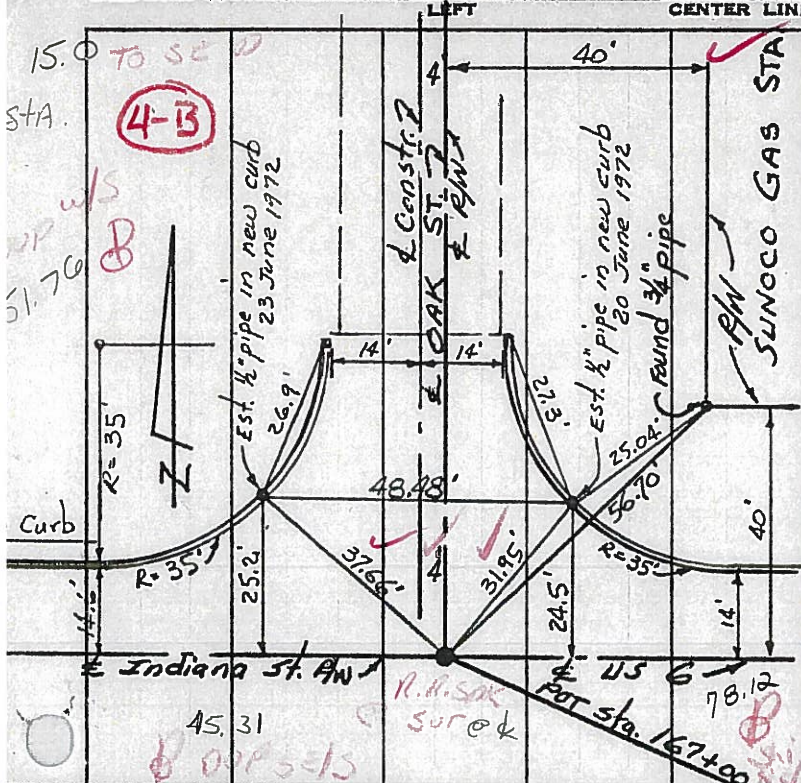
TEMP. _____

DESCRIPTION

New CONTROL POINT

Witnesses

JOB NO. _____



DONE

PI Sta. 181+93.82

Δ - 1° 30' Rt.

DD - 0° 28'

TT - 160.72'

LL - 321.43'

EE - 1.05'

RR - 1277.67'

3 pump Isl.

New Curb & Basin

#3 CB

#3 CB

#3 CB

#3 CB

60-d spk W/S 19" Walnut

Need inside corners of CB castings on all four basins shown.

PERSONNEL	TITLE	PERSONNEL	TITLE
Red Beach			
Newcomb			
Knape			
Wise			

COUNTY Williams DATE 24 Feb '71

S. R. US 6 WEATHER _____

SEC. EDGERTON TEMP. _____

CONTROL POINTS

