

O.D.O.T. DISTRICT 2 SURVEY OFFICE (USE ONLY)

PERSONNEL \_\_\_\_\_ REFERENCE NO. 4 D SHEET 6 OF 41  
 NOTES AUBLE DATE 9/20/19 ROUTE US 6  
 H.C. LEU WEATHER SUNNY COUNTY WILLIAMS  
 R.C. AUBLE TEMP. 61° TOWNSHIP ST. JOSEPH  
 DWG BY NIESE PID 102827 SECTION 27  
 T 6 N R 1 E

TYPE MONUMENT 3/4" IPIN

~~ON SURFACE~~ - BELOW 6"

OFFSET Q PAVEMENT ON LT : RT  
11.1' TO RT EDGE PAVEMENT

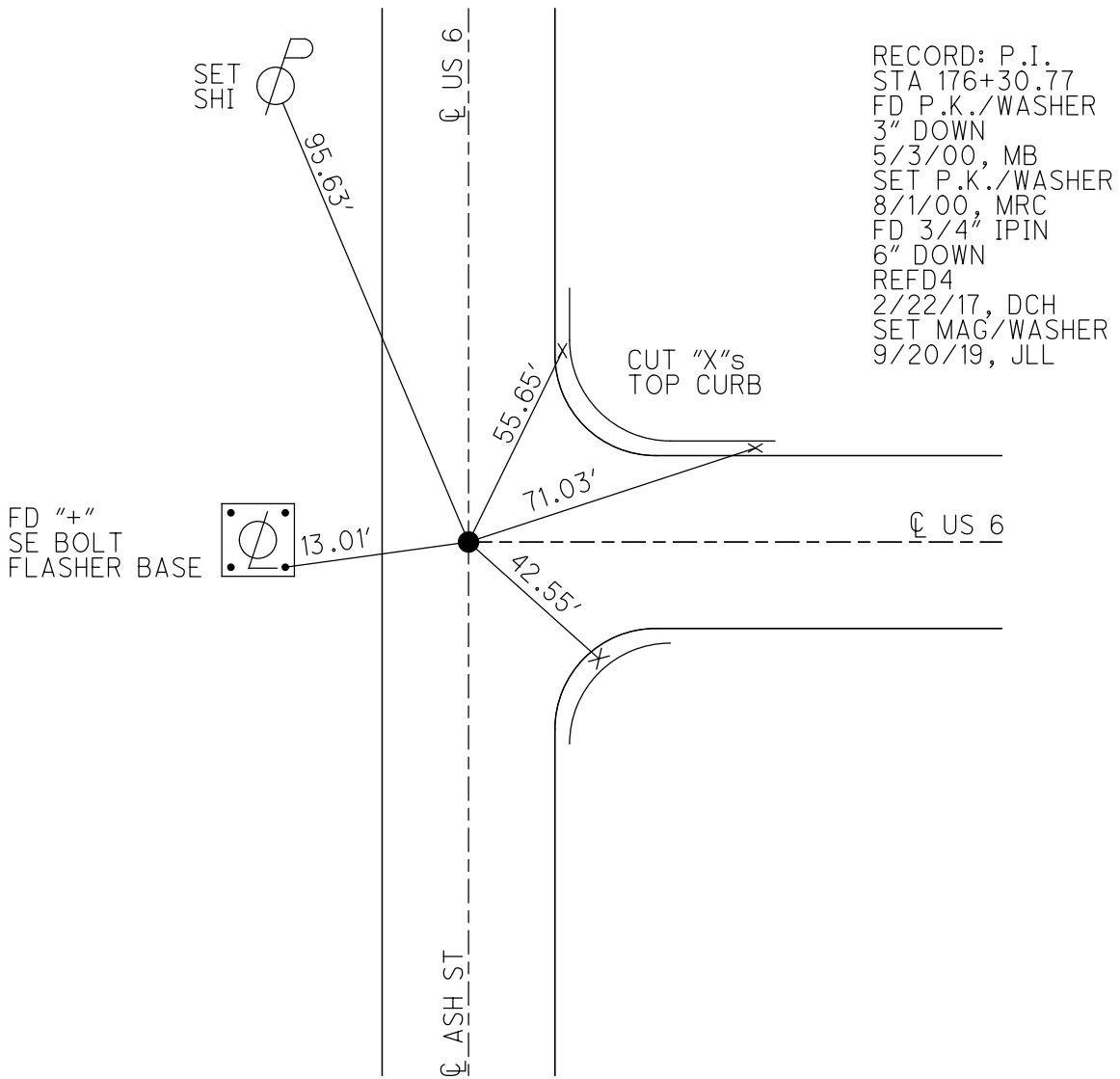
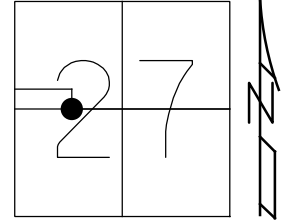
STATION: 176+24.83

HORZ.DATUM: NAD83 2011

GEOID: NAVD88 2012A

GRID: NORTHING: 656932.895

EASTING: 1353641.548



# O.D.O.T. DISTRICT 2 SURVEY OFFICE

PERSONNEL \_\_\_\_\_

REFERENCE NO. 4-D

SHEET 9 OF 32

NOTES CANTERBURY

H.C. MOSE

DATE 5-3-00

ROUTE US 6

R.C. BARNHISEL III

WEATHER FAIR

COUNTY WILLIAMS

TEMP. +68°

TOWNSHIP St. Joseph

SECTION 27

T. 6 N. R. 1 E.

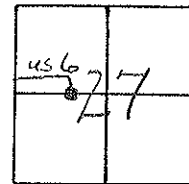
TYPE MONUMENT PK & WASHER

ON SURFACE - BELOW 3"

LEFT - C PAV'T. - RIGHT EAST & SOUTH

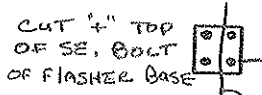
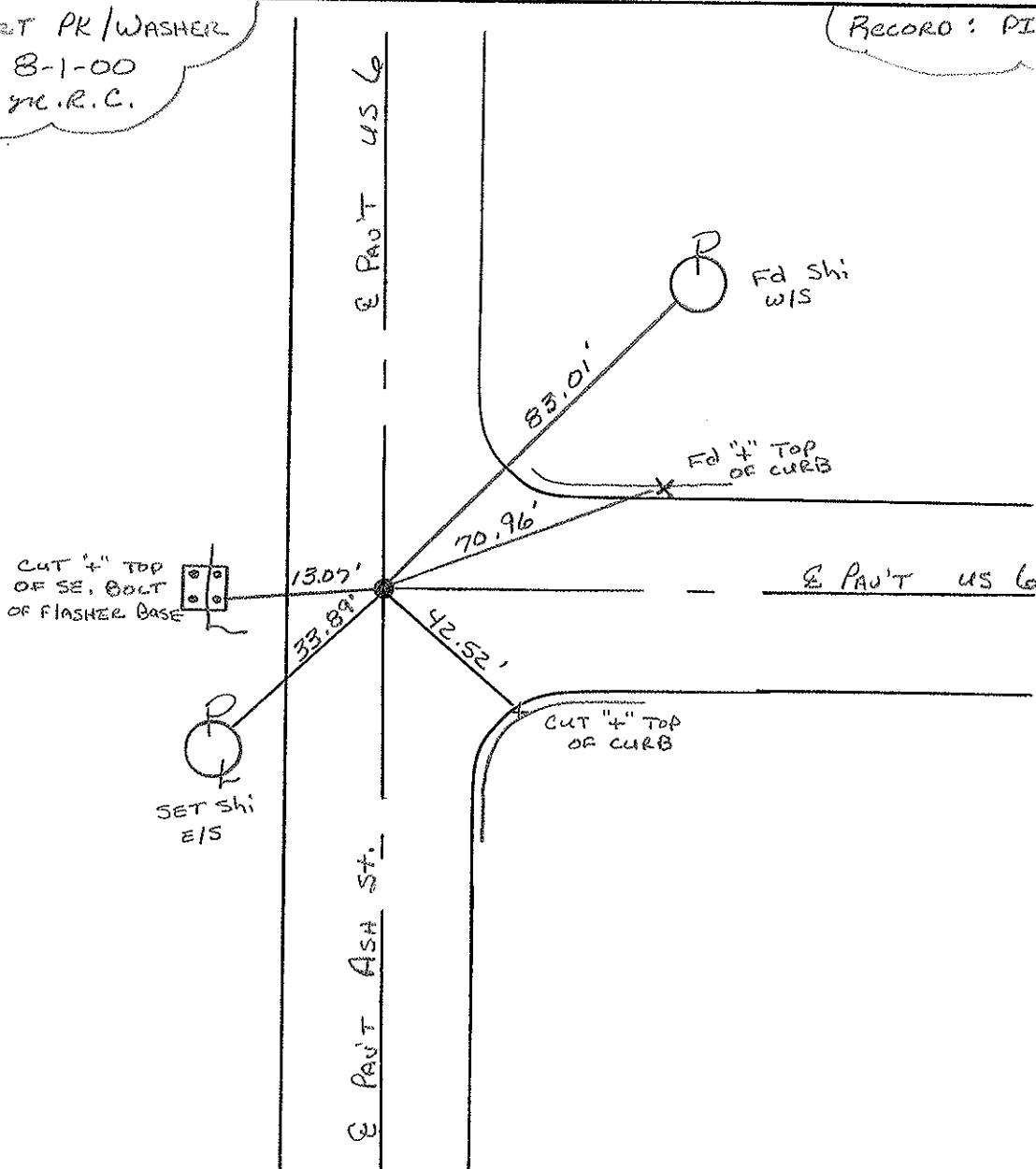
11.1 TO WEST EDGE PAVEMENT

S.L.M. 176+28



Reset PK/WASHER  
8-1-00  
M.C.R.C.

RECORD: PI STA: 176+30.77



# O.D.O.T. DISTRICT 2 SURVEY OFFICE

PERSONNEL \_\_\_\_\_

REFERENCE NO. \_\_\_\_\_

SHEET \_\_\_\_\_ OF \_\_\_\_\_

NOTES LOEHRKE

H.C. REED

R.C. BARNHISEL

DATE 4-11-88

WEATHER P. Cloudy

TEMP. +55

ROUTE U.S. 6

COUNTY WILLIAMS

TOWNSHIP St. JOSEPH

SECTION 27

T & N R I E

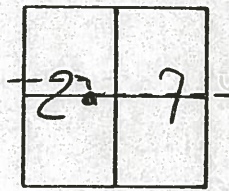
TYPE MONUMENT Reset P.K. WAS ER 6-6-98

ON SURFACE - BELOW

LEFT - C PAV'T. - RIGHT BOTH PAVT

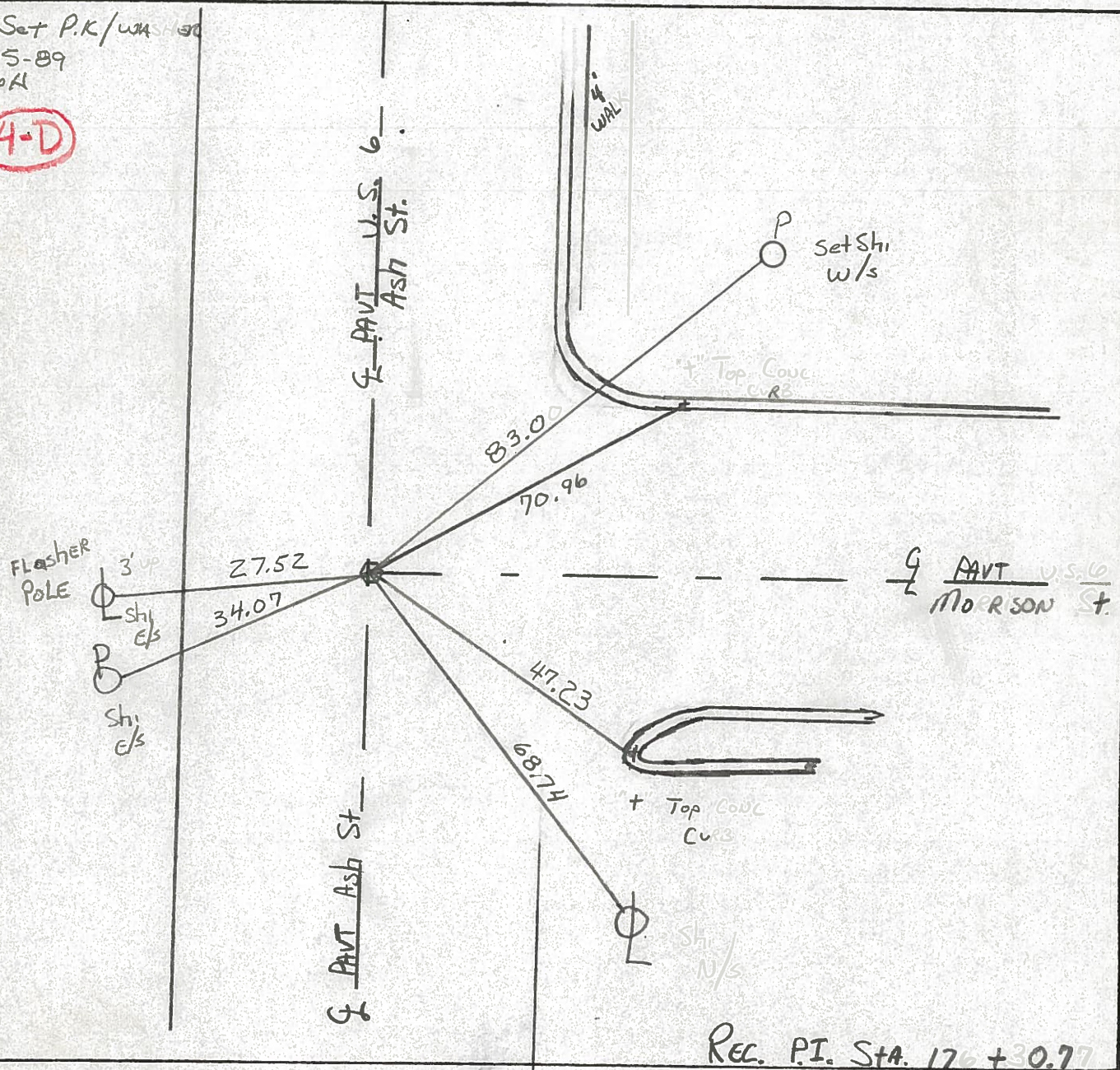
10.5 TO W EDGE PAVEMENT ASH ST

S.L.M. 176 + 28



Re-Set P.K./was used  
12-5-89  
swA

4-D



REC. P.I. STA. 176 + 30.77

County Williams S.R. U.S. 6

Date 7-15-81

Township St. Joseph

Weather P. Cloudy

Section 27 - IN EDGERTON

Temp. +65°

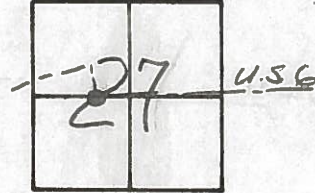
T6N, R1E

Personnel HOFFMAN

Loehrke

Householder

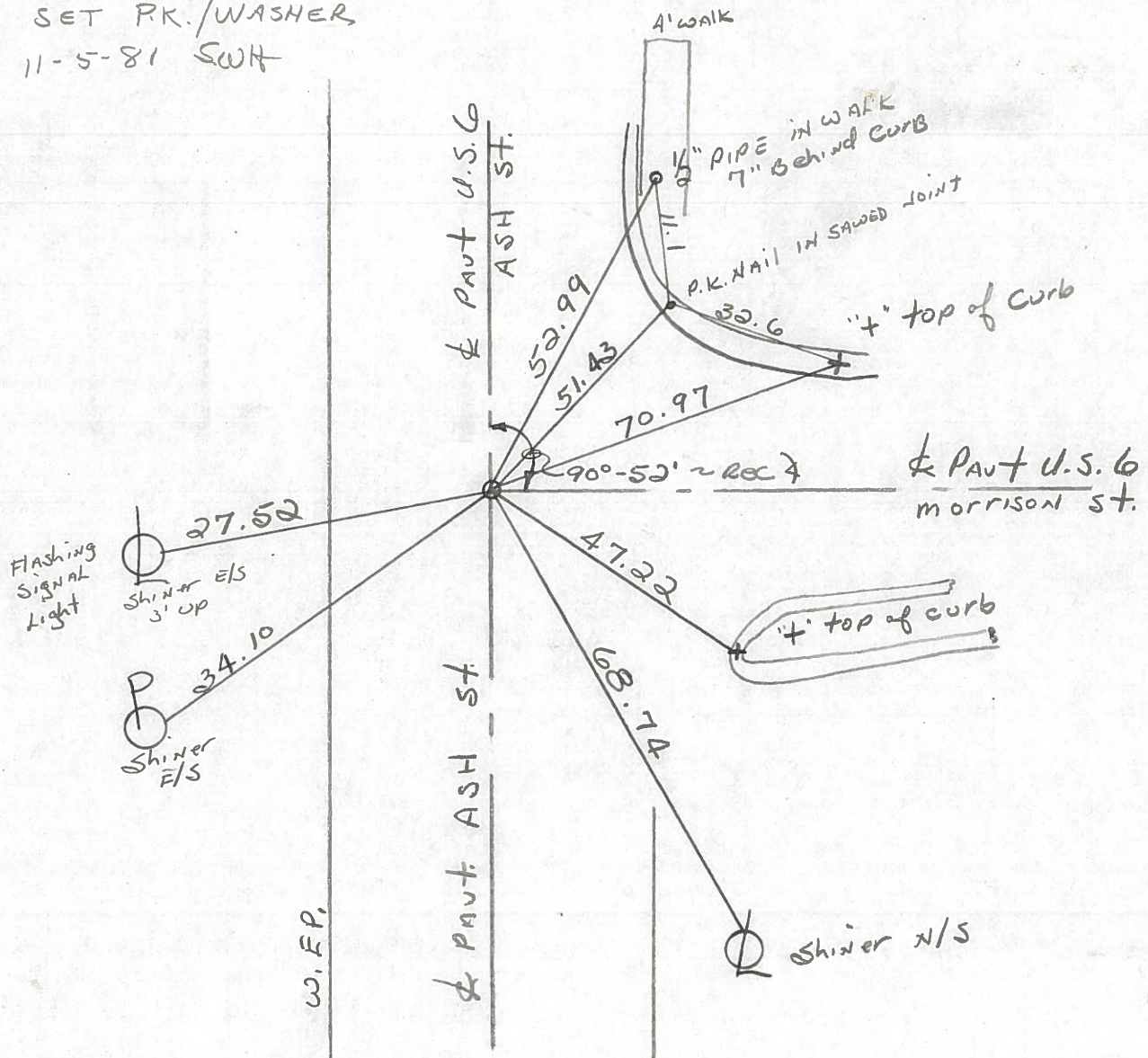
4-D



Fd. P.K. @ SURFACE @ CTR of PAVTS.  
10.5' to W. EP of ASH ST.

PROJECT STA ± 176 + 23

SET P.K. / WASHER  
11-5-81 SWH



P.I. STA 176 + 30.77 ~ REC

PERSONNEL TITLE PERSONNEL TITLE

Red Beach  
Newcomb  
Knape

COUNTY Wms

DATE June 1972

S. R. US 6

WEATHER

SEC. Edgerton

TEMP.

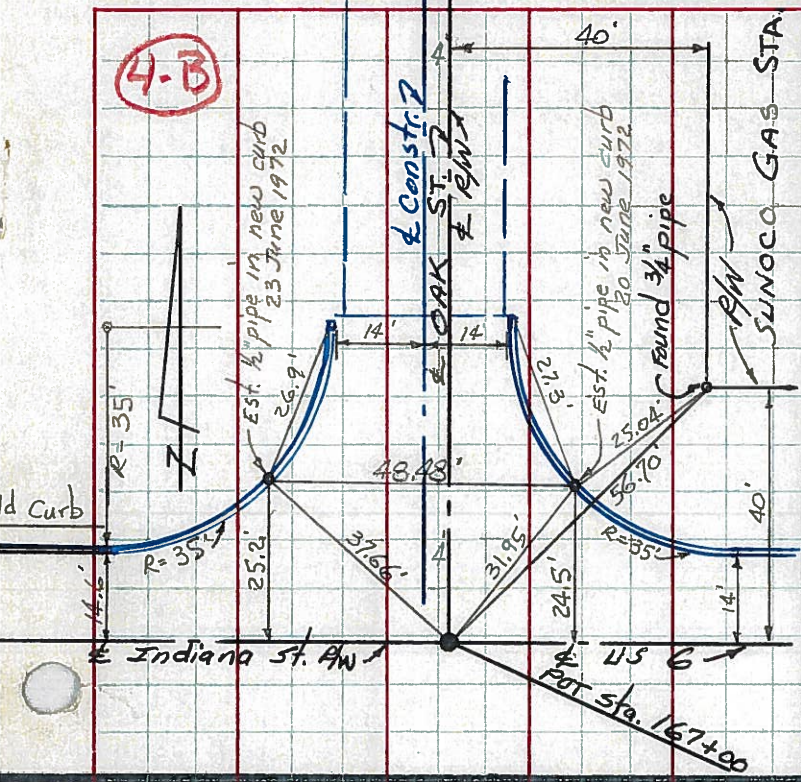
DESCRIPTION

New CONTROL POINT Witnesses

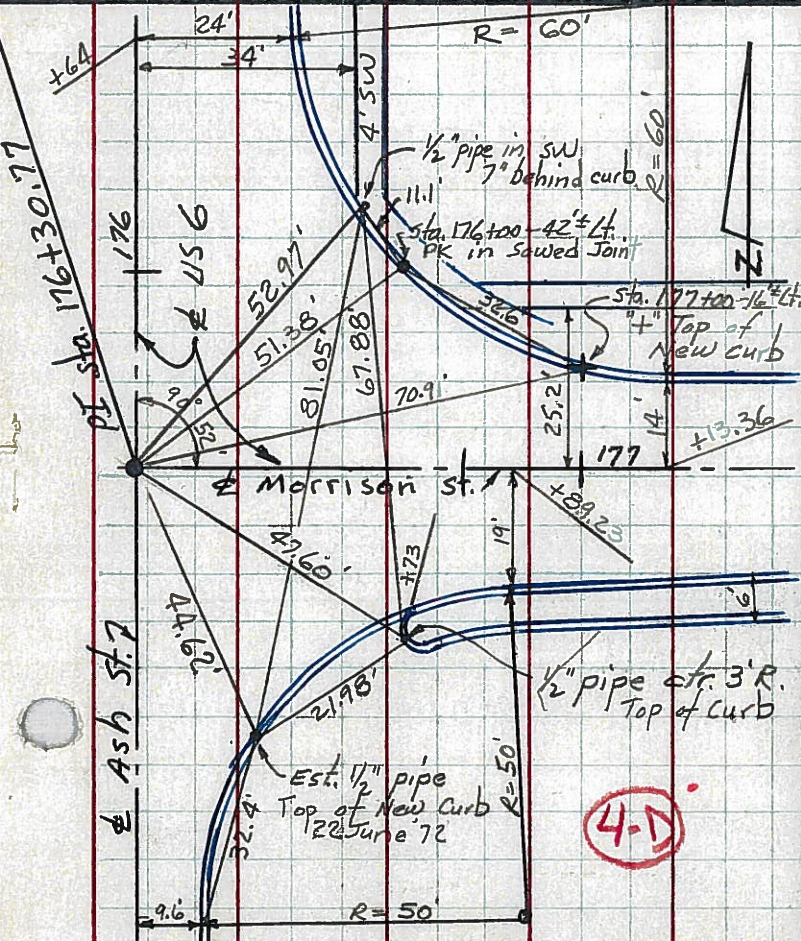
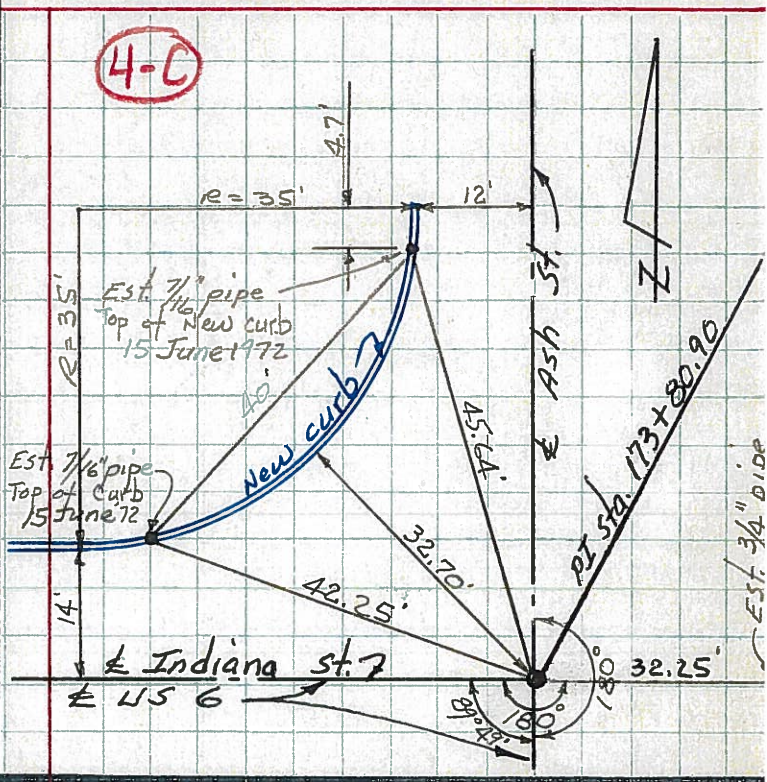
JOB NO.

LEFT CENTER LINE RIGHT

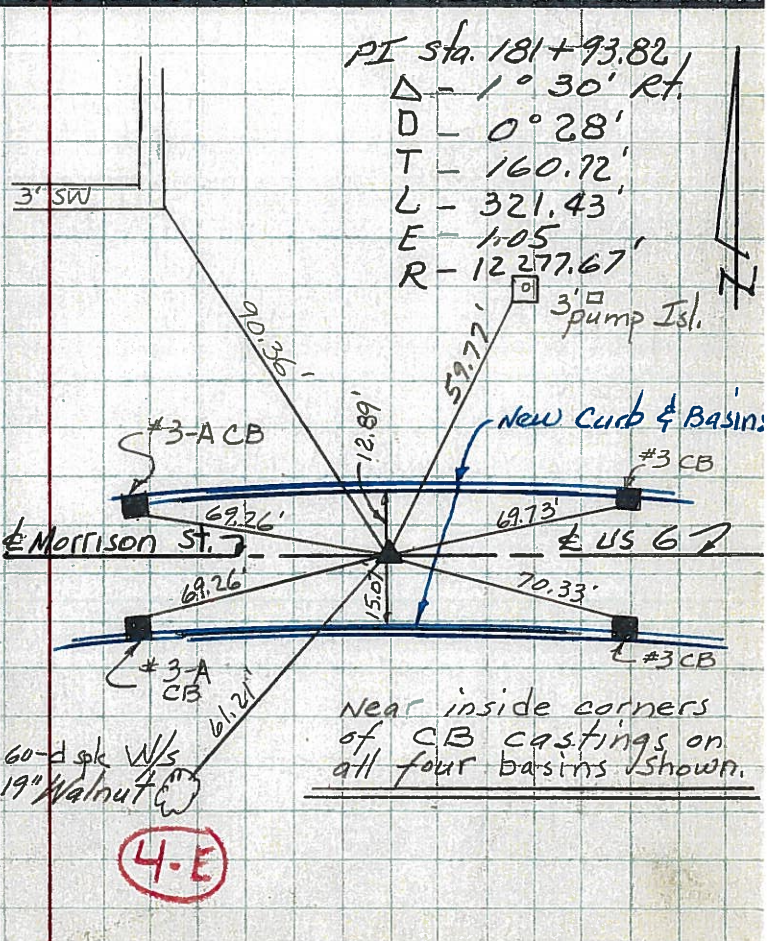
4-B



4-C



4-D



4-E

PI sta. 181+93.82  
 $\Delta$  - 1° 30' Rt.  
 $\Delta$  D - 0° 28'  
 $\Delta$  T - 160.72'  
 $\Delta$  L - 321.43'  
 $\Delta$  E - 1.05'  
 $\Delta$  R - 12 277.67'

60-d gk W/S  
19" Walnut

PERSONNEL TITLE PERSONNEL TITLE

Red Beach  
Newscomb  
Knappe

COUNTY Wms

DATE June 1972

S. R. US 6

WEATHER \_\_\_\_\_

SEC. Edgerton

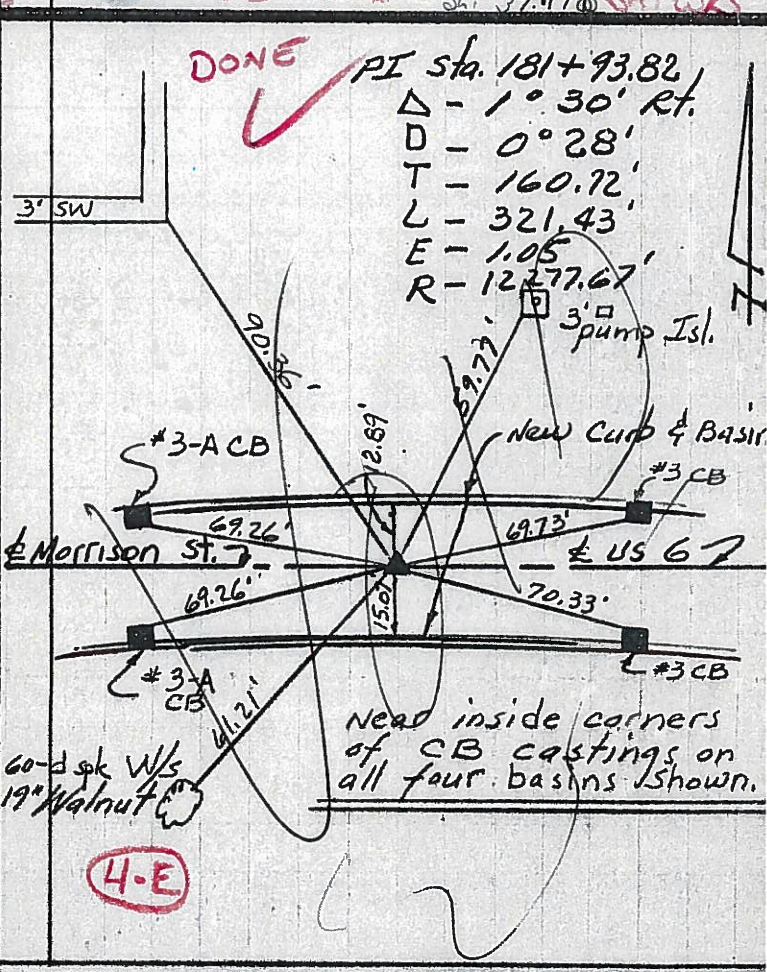
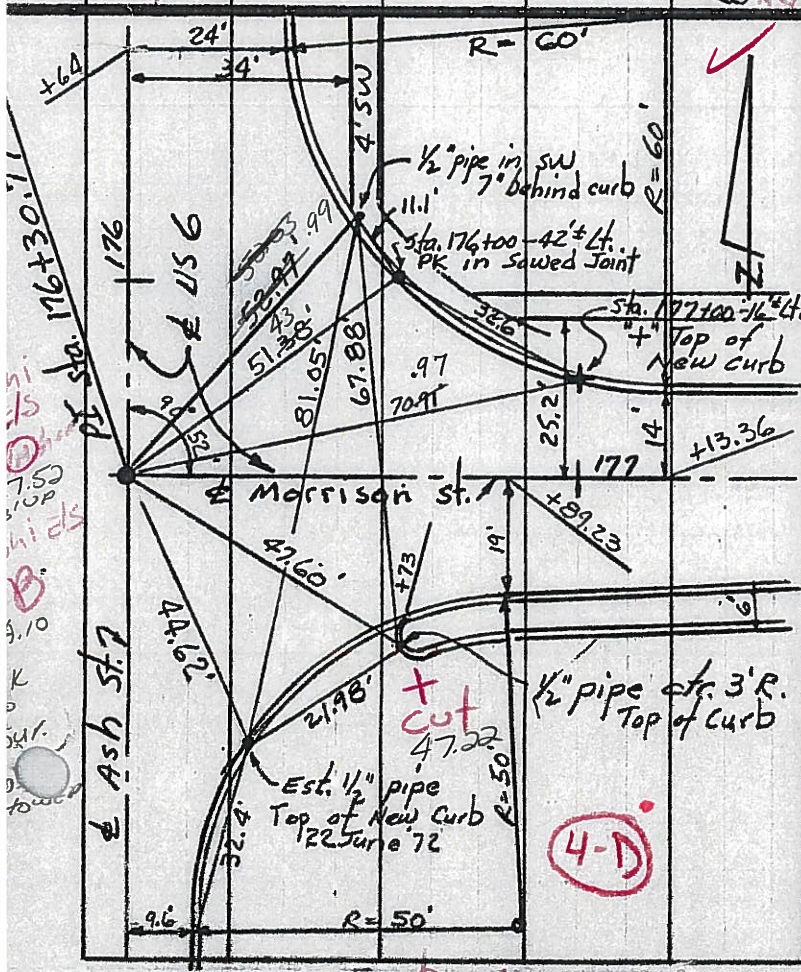
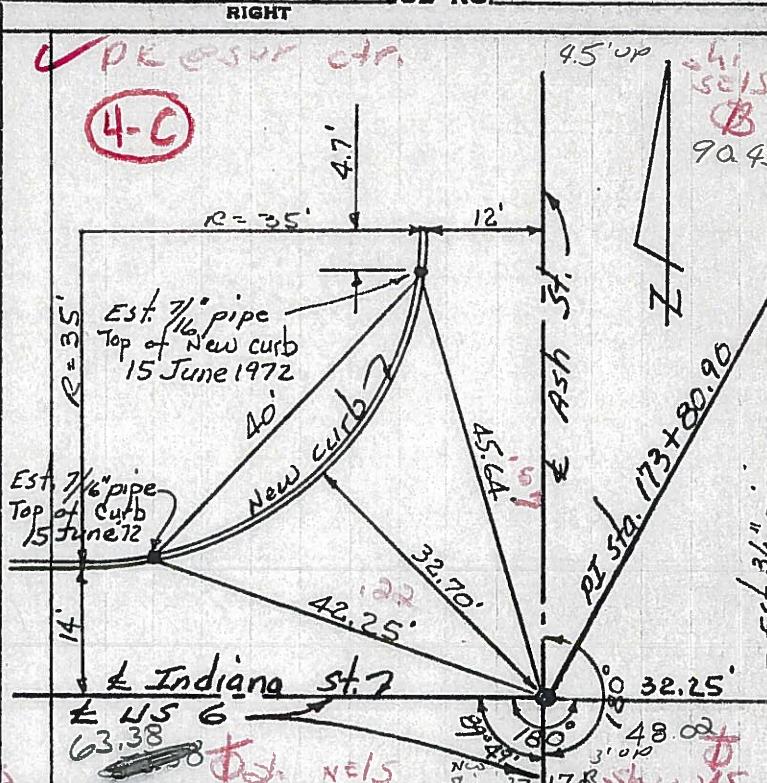
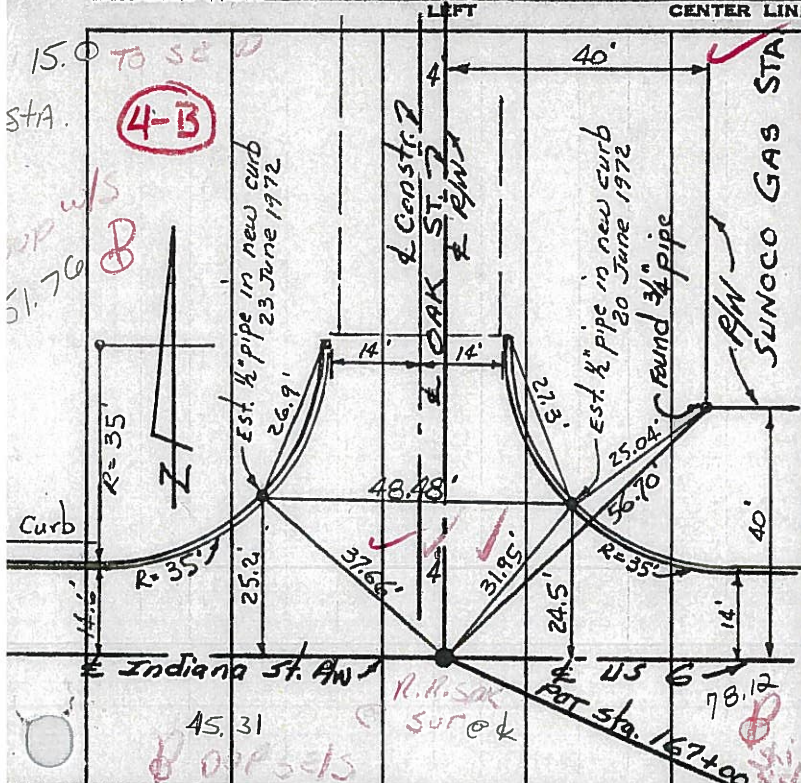
TEMP. \_\_\_\_\_

DESCRIPTION

**New CONTROL POINT**

**Witnesses**

JOB NO. \_\_\_\_\_



PERSONNEL TITLE PERSONNEL TITLE COUNTY Williams DATE 24 Feb '71  
 Red Beach \_\_\_\_\_  
 Newcomb \_\_\_\_\_  
 Knape \_\_\_\_\_  
 Wise \_\_\_\_\_  
 S. R. US 6 WEATHER \_\_\_\_\_  
 SEC. EDGERTON TEMP. \_\_\_\_\_

DESCRIPTION CONTROL POINTS JOB NO.

