

O.D.O.T. DISTRICT 2 SURVEY OFFICE (USE ONLY)

PERSONNEL

REFERENCE NO. 4 E

SHEET 7 OF 41

NOTES TRENKA

DATE 7/16/18

ROUTE US 6

H.C. LEU

WEATHER CLOUDY

COUNTY WILLIAMS

R.C. HAGEMeyer

TEMP. 75°

TOWNSHIP ST. JOSEPH

DWG BY NIESE

PID 102827

SECTION 27

T 6 N R 1 E

TYPE MONUMENT P.K./WASHER

ON SURFACE - ~~BELOW~~ ON

OFFSET \oslash PAVEMENT 0.7' LT : ~~RT~~

15.1' TO RT EDGE PAVEMENT

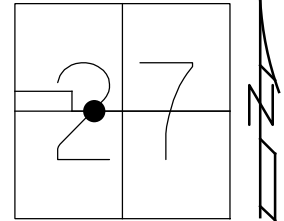
STATION: 181+87.79

HORZ.DATUM: NAD83 2011

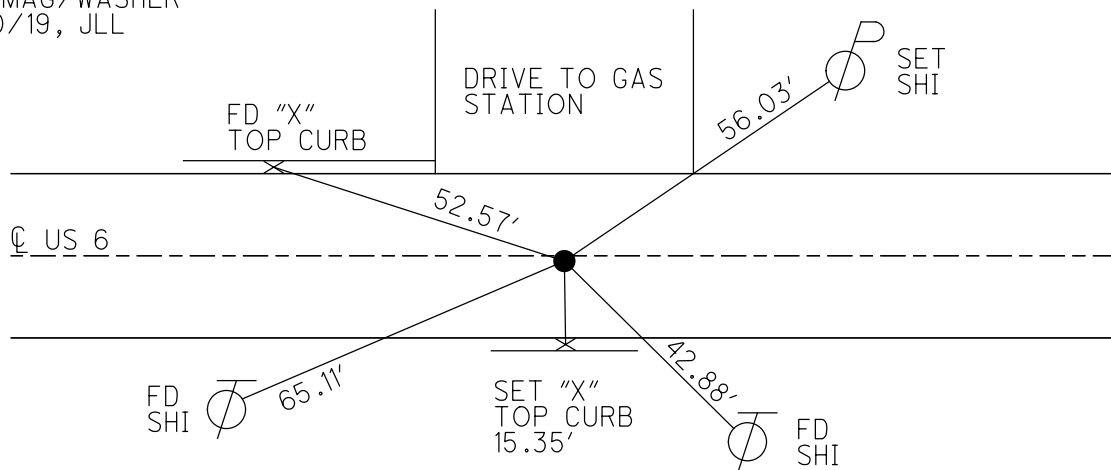
GEOID: NAVD88 2012A

GRID: NORTHING: 656911.570

EASTING: 1354204.062



RECORD: P.I.
 STA.181+93.82
 $\Delta = 1^\circ 30'$ RT
 FD P.K./WASHER
 5/3/00, MB
 SET P.K./WASHER
 8/1/00, MRC
 FD P.K./WASHER
 REFE4
 2/27/17, DCH
 SET MAG/WASHER
 9/20/19, JLL



O.D.O.T. DISTRICT 2 SURVEY OFFICE

PERSONNEL _____

REFERENCE NO. 4-E

SHEET 10 OF 32

NOTES CANTERBURY

H.C. MOSEER

R.C. BARWISSEL II

DATE 5-3-00

WEATHER FAIR

TEMP. +68°

ROUTE US 6

COUNTY WILLIAMS

TOWNSHIP St. Joseph

SECTION 27

T 6 N R 1 E

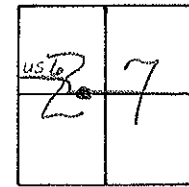
TYPE MONUMENT PK & WASHER

ON SURFACE - BELOW YES

LEFT- & PAW'T. - RIGHT 0.7

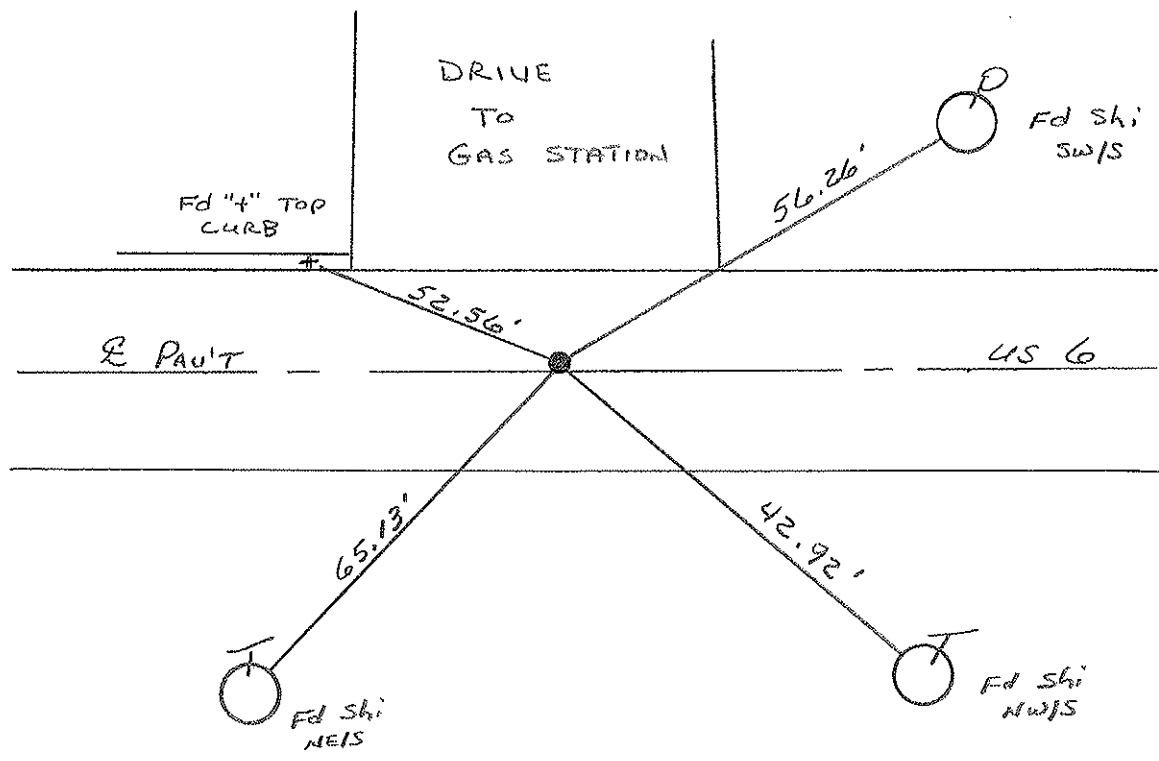
15.1 TO RT. EDGE PAVEMENT

S.L.M. 181+90



RECORD: P.I. STA: 181+93.82
 $\Delta = 1^{\circ} 30' RT$

RESET PK/WASHER
 8-1-00
 M.R.C.



O.D.O.T. DISTRICT 2 SURVEY OFFICE

PERSONNEL

REFERENCE NO. _____

SHEET _____ OF _____

NOTES LOEHRKE

H.C. REED

R.C. BARNHISEL

Hoffman

DATE 4-12-88

WEATHER CLEAR

TEMP. +45

ROUTE U.S. 6

COUNTY Williams

TOWNSHIP St JOSEPH

SECTION 27

T O N R I E

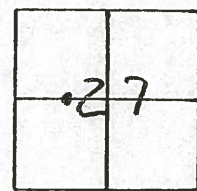
TYPE MONUMENT ^{Reset} P.K. & WASHER 6-6-88

ON SURFACE - ~~BELOW~~ _____

LEFT - ~~C~~ PAV'T. - ~~RIGHT~~ 0.9

13.0 TO EDGE PAVEMENT NORTH CURB

S.L.M. 181+90

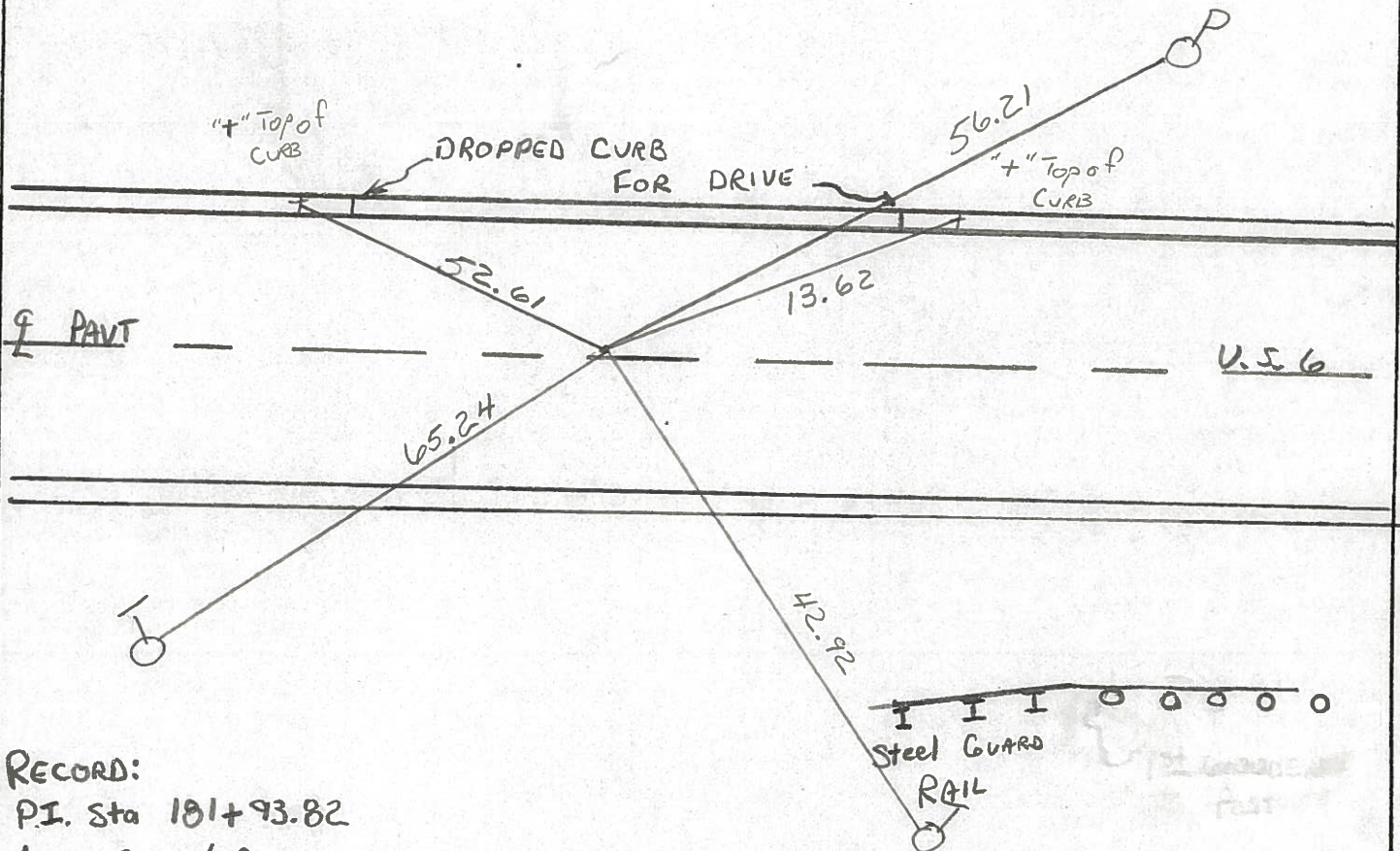


Re-Set P.K./WASHER

12-5-89

SWA

4-E



RECORD:

P.I. Sta 181+93.82

$\Delta = 1^{\circ}-30' R_t$

County Williams S.R. U.S. 6

Date 7-15-81

Township St. Joseph

Weather P. Cloudy

Section 27- 1N EDGERTON

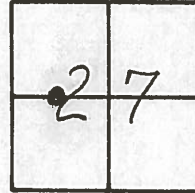
Temp. +65°

T6N, R1E

Personnel HOFFMAN

Householder

Loehrke



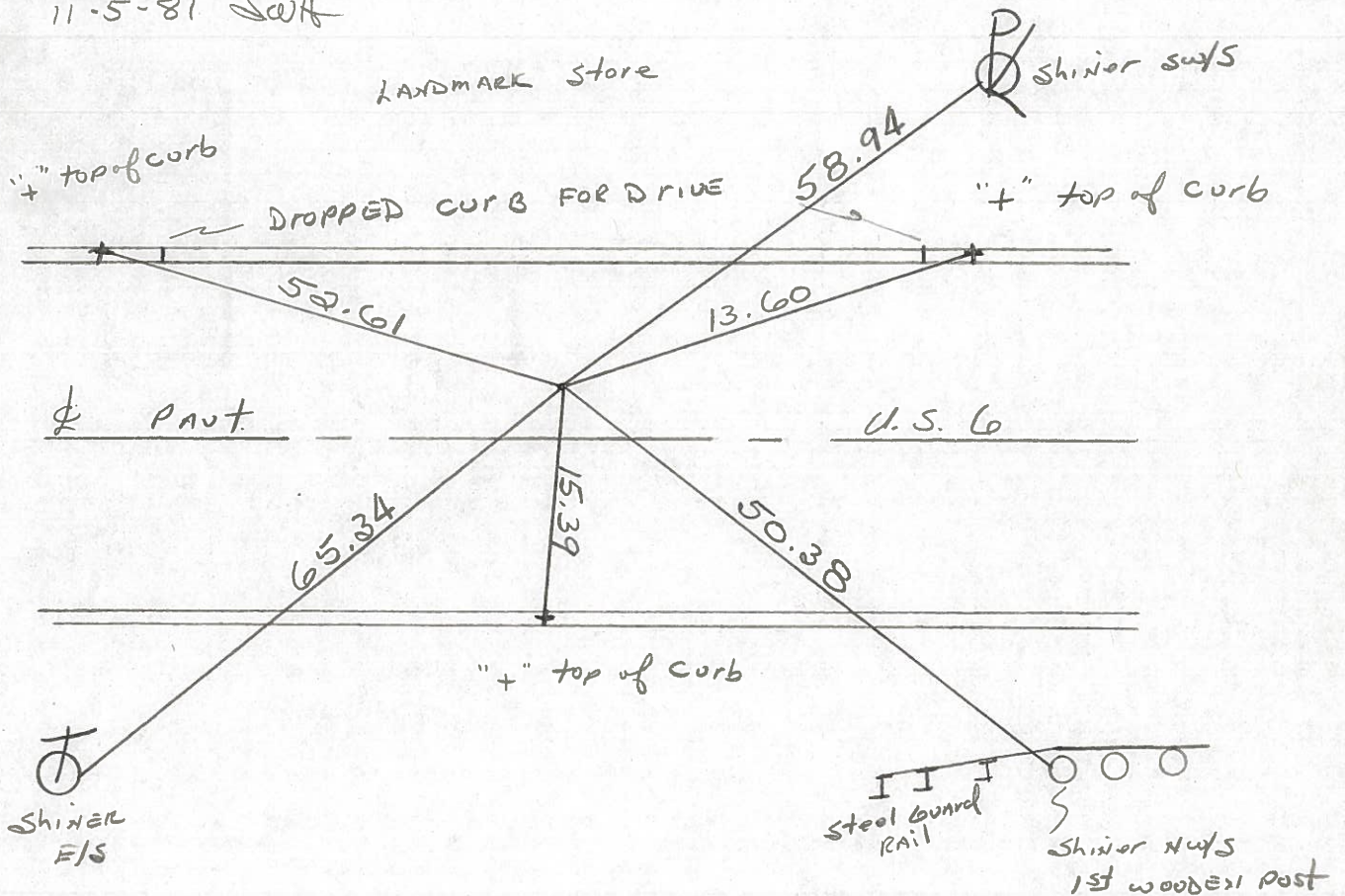
4-E

Fd. P.K. Nail Shank 1" Below Surface

PROJECT STA ± 181+91

1.1' N. of & PAUT U.S. 6
12.98' to N. CURB FACE
15.07' to S. CURB FACE

SET P.K./WASHER
11-5-81 SWH



P.I. STA. 181+93.82 ± Δ = 10'-30' RT, ~ REC.

PERSONNEL TITLE PERSONNEL TITLE

Red Beach
Newcomb
Knape

COUNTY Wms

DATE June 1972

S. R. US 6

WEATHER _____

SEC. Edgerton

TEMP. _____

DESCRIPTION

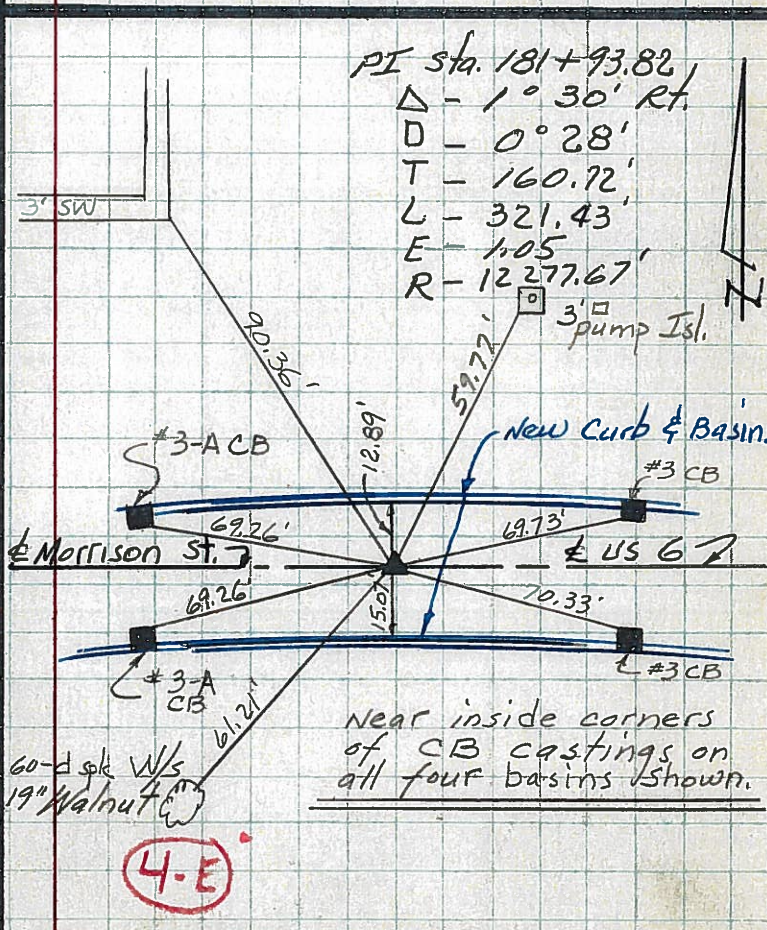
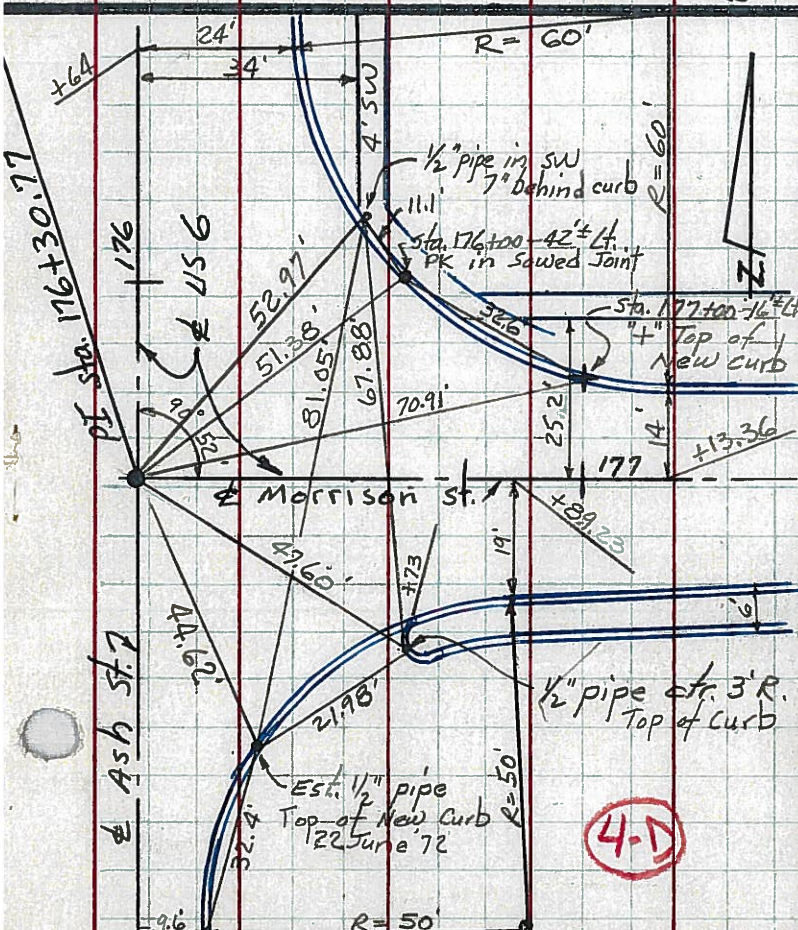
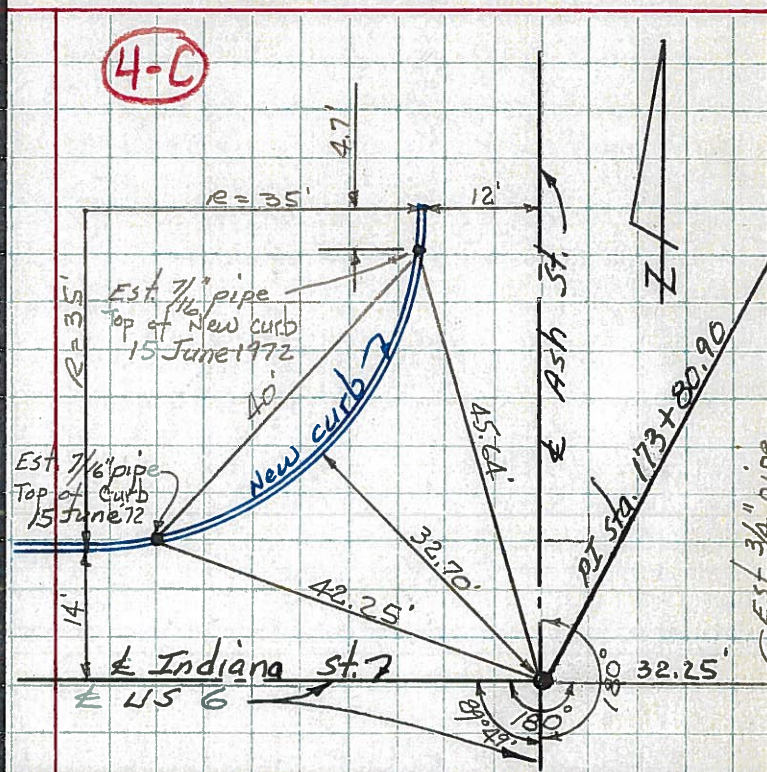
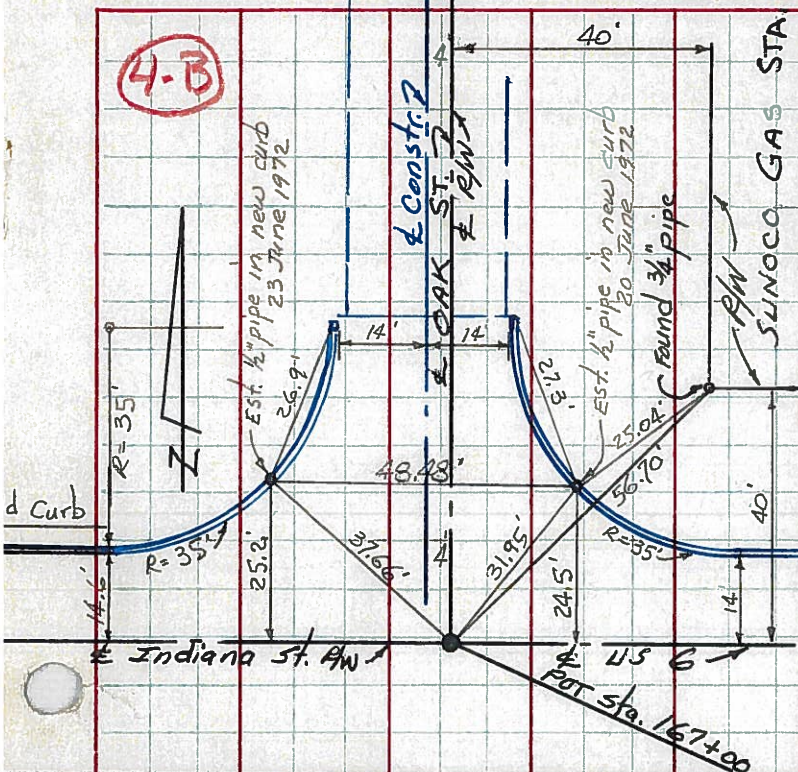
New CONTROL POINT Witnesses

JOB NO. _____

LEFT

CENTER LINE

RIGHT



PI Sta. 181+93.82
 Δ - 1° 30' Rt.
 Δ D - 0° 28'
 T - 160.72'
 L - 321.43'
 E - 1.05'
 R - 12277.67'

Near inside corners of CB castings on all four basins shown.

PERSONNEL TITLE PERSONNEL TITLE

Red Beach
Newcomb
Knappe

COUNTY Wms

DATE June 1972

S. R. US 6

WEATHER _____

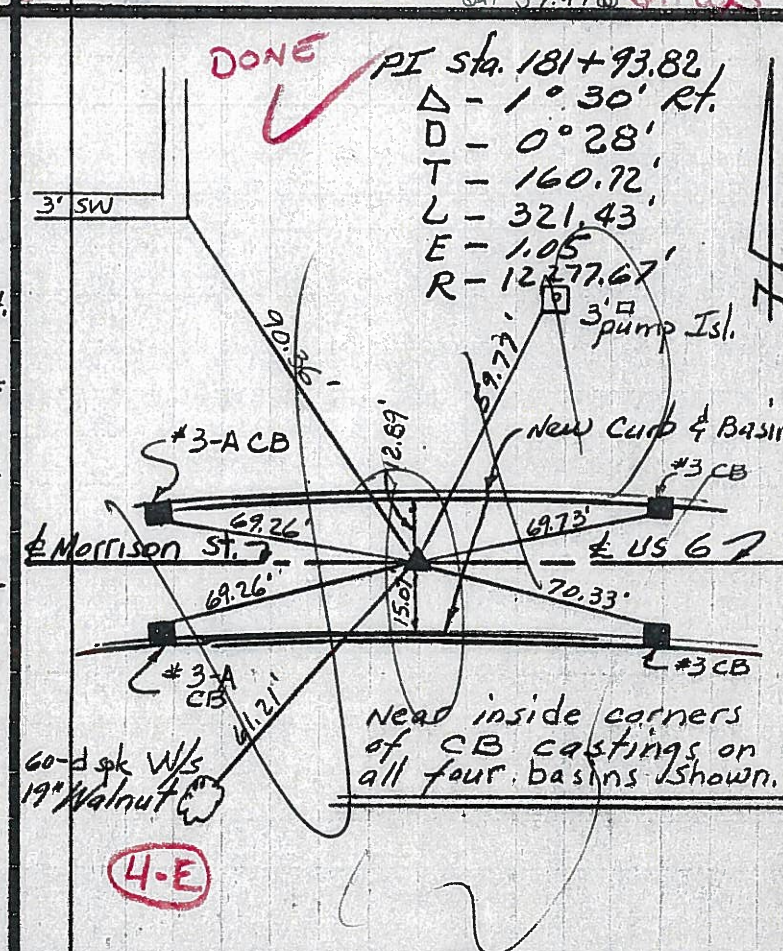
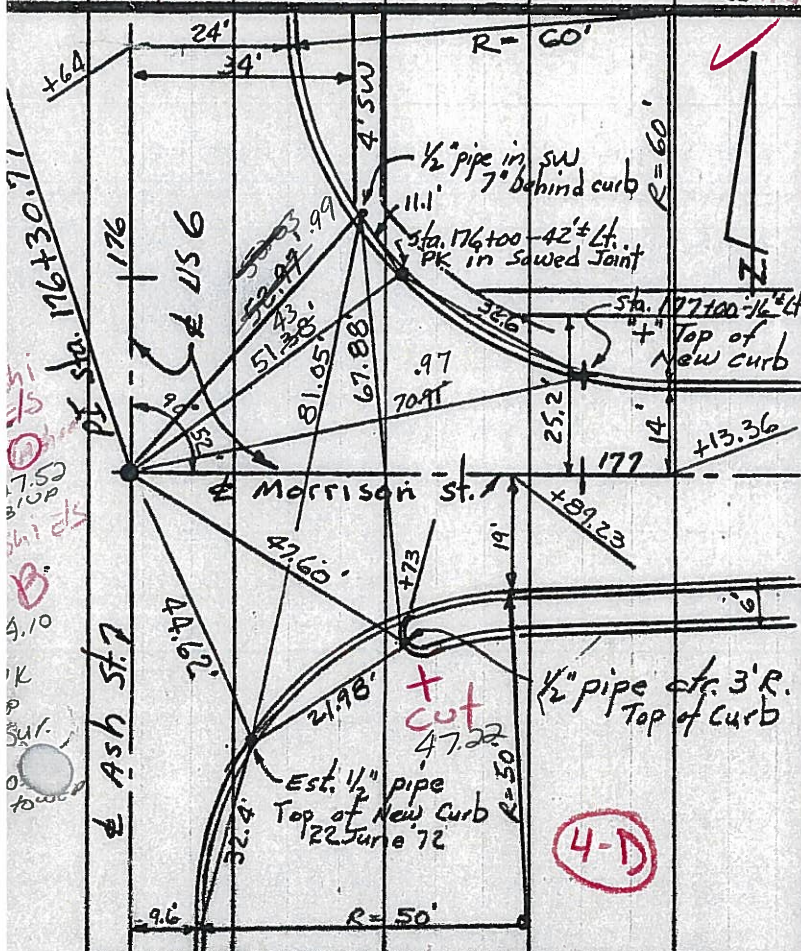
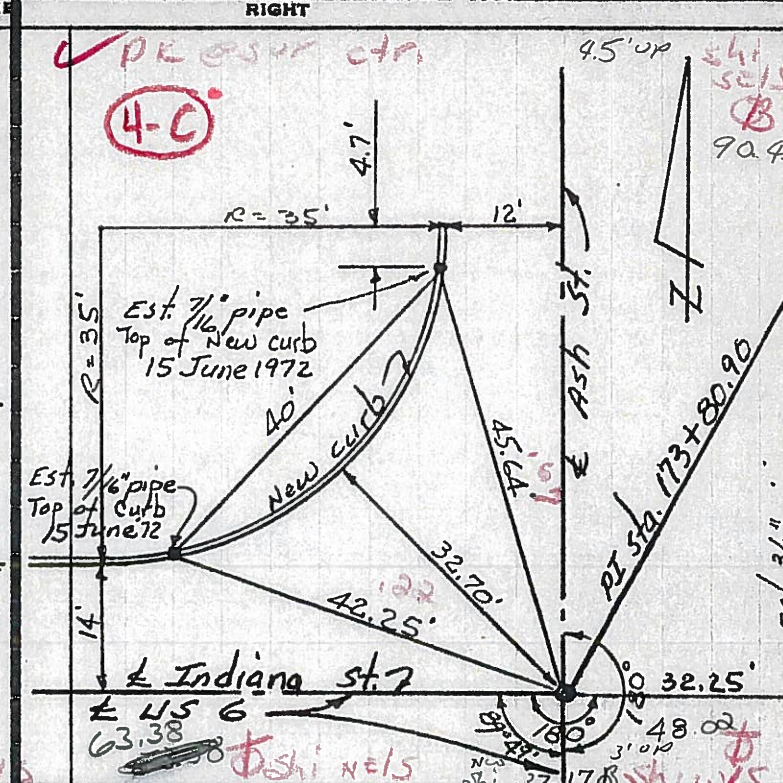
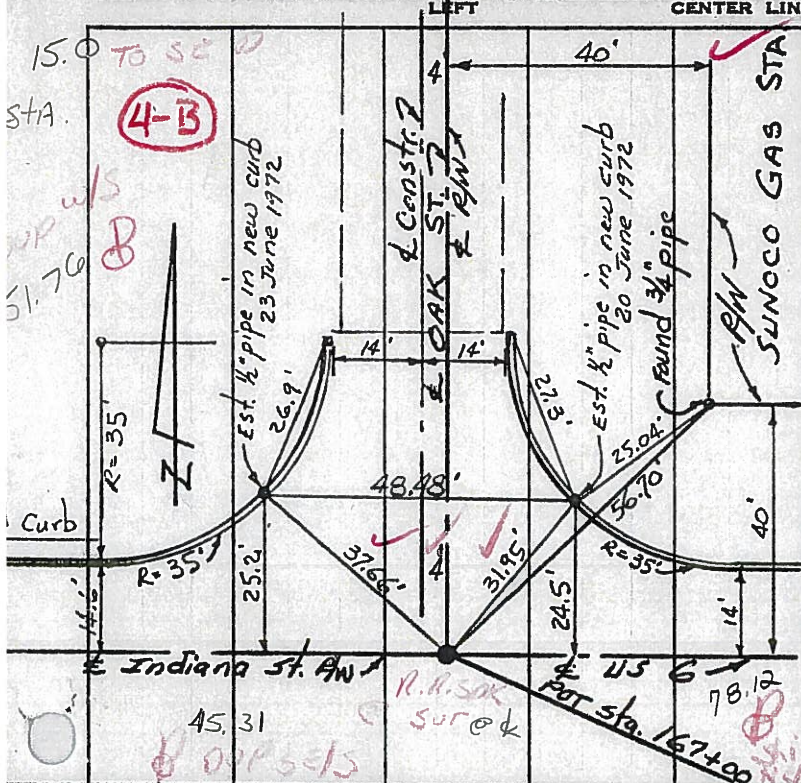
SEC. Edgerton

TEMP. _____

DESCRIPTION

New CONTROL POINT Witnesses

JOB NO. _____



15.0
STA.
UP W/S
51.70
Curb
R=35'
R=35'
R=35'

+64
PI Sta. 16+30.71
US 6
Morrison St. 7
Ash St. 7
R=60'
R=60'
R=50'

PK SUR ctr.
4.5' up
4.7'
R=35'
R=35'
R=35'
Est. 7/8" pipe
Top of New Curb
15 June 1972
Est. 7/8" pipe
Top of Curb
15 June 72
Ash St. 7
PI Sta. 173+80.90
Indiana St. 7
US 6
32.25'
48.02'
37.178

DONE
PI Sta. 181+93.82
Δ - 1° 30' Rt.
D - 0° 28'
T - 160.72'
L - 321.43'
E - 1.05'
R - 12277.67'
3' SW
3' pump Isl.
New Curb & Basin
3 CB
US 6
3 CB
Near inside corners
of CB castings on
all four basins shown.
Walnut

1874 Shi W/S

PERSONNEL TITLE PERSONNEL TITLE COUNTY Williams DATE 24 Feb '71
 Red Beach _____
 Newcomb _____
 Knape _____
 Wise _____
 S. R. US 6 WEATHER _____
 SEC. EDGERTON TEMP. _____

DESCRIPTION CONTROL POINTS JOB NO.

