

O.D.O.T. DISTRICT 2 SURVEY OFFICE (USE ONLY)

PERSONNEL

REFERENCE NO. 4 F

SHEET 8 OF 41

NOTES TRENKA

DATE 7/16/18

ROUTE US 6

H.C. LEU

WEATHER CLOUDY

COUNTY WILLIAMS

R.C. HAGEMeyer

TEMP. 75°

TOWNSHIP ST. JOSEPH

DWG BY NIESE PID 102827

SECTION 27

T 6 N R 1 E

TYPE MONUMENT D.N.F. P.K./WASHER

ON SURFACE - ~~BELOW~~ ON

OFFSET Q PAVEMENT 0.5' LT : ~~RT~~

11.6' TO LT EDGE PAVEMENT 48'± WEST OF CR 4.50

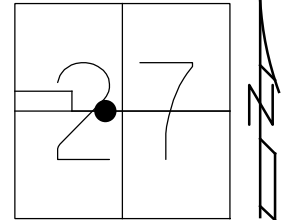
STATION: 189+97

HORZ.DATUM: NAD83 2011

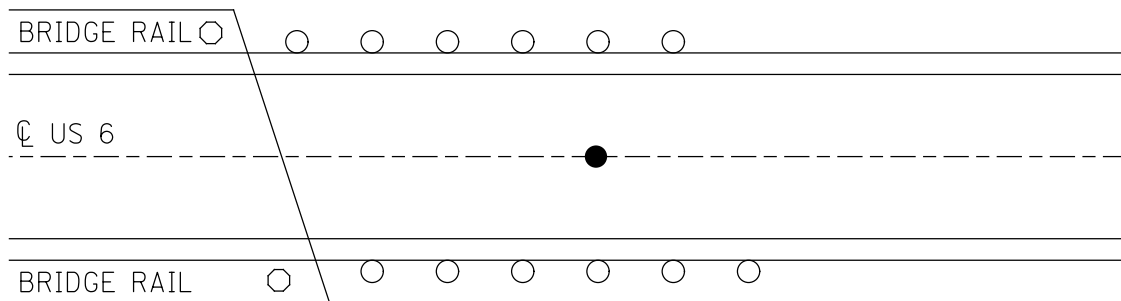
GEOID: NAVD88 2012A

GRID: NORTHING: -

EASTING: -



RECORD: P.O.T.
STA 190+00
FD P.K./WASHER
5/3/00, MB
SET P.K./WASHER
8/1/00, MRC
D.N.F.
7/16/18, JLL



O.D.O.T. DISTRICT 2 SURVEY OFFICE

PERSONNEL

REFERENCE NO. 4-F

SHEET 11 OF 32

NOTES CANTERBURY

H.C. MOSEK

R.C. BARNHISEL III

DATE 5-3-00

WEATHER FAIR

TEMP. +68°

ROUTE US 6

COUNTY WILLIAMS

TOWNSHIP St. Joseph

SECTION 27

T 6 N R 1 E

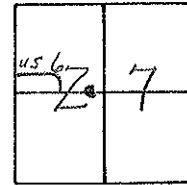
TYPE MONUMENT PK & WASHER

ON SURFACE - BELOW YES

LEFT-☉ PAV'T. - RIGHT 0.5'

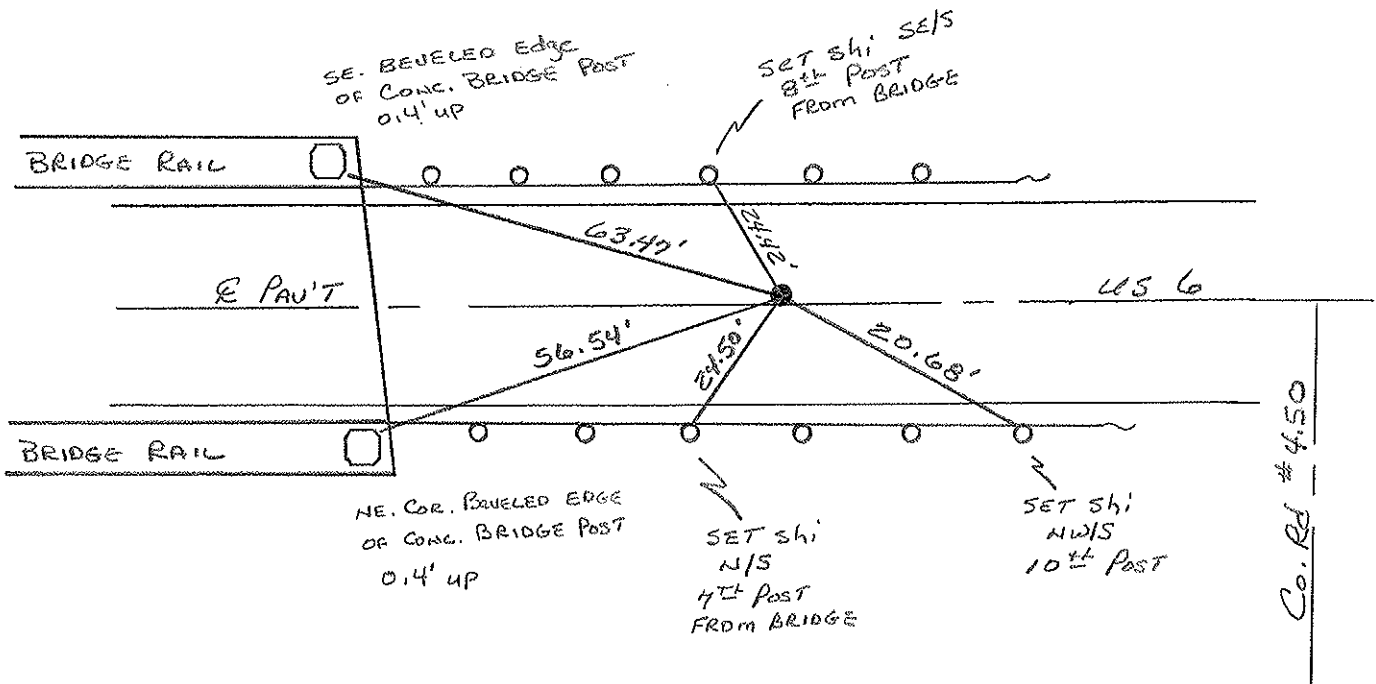
11.6 TO LT EDGE PAVEMENT

S.L.M. 189+97 48'± WEST of Co. Rd #4.50



RECORD: POT STA: 190+00

RESET PK/WASHER
8-1-00
M.R.C.



O.D.O.T. DISTRICT 2 SURVEY OFFICE

PERSONNEL

REFERENCE NO. _____

SHEET 9 OF _____

NOTES LOEHRKE

H.C. REED

R.C. BARNHISEL

Hoffman

DATE 4-12-88

WEATHER CLEAR

TEMP. +45

ROUTE U.S. 6

COUNTY WILLIAMS

TOWNSHIP St JOSEPH

SECTION 27

T 6 N R 1 E

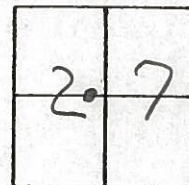
TYPE MONUMENT Set P.K. & WASHER 5-31-88
Sm. R.R. SPIKE

ON SURFACE - BELOW

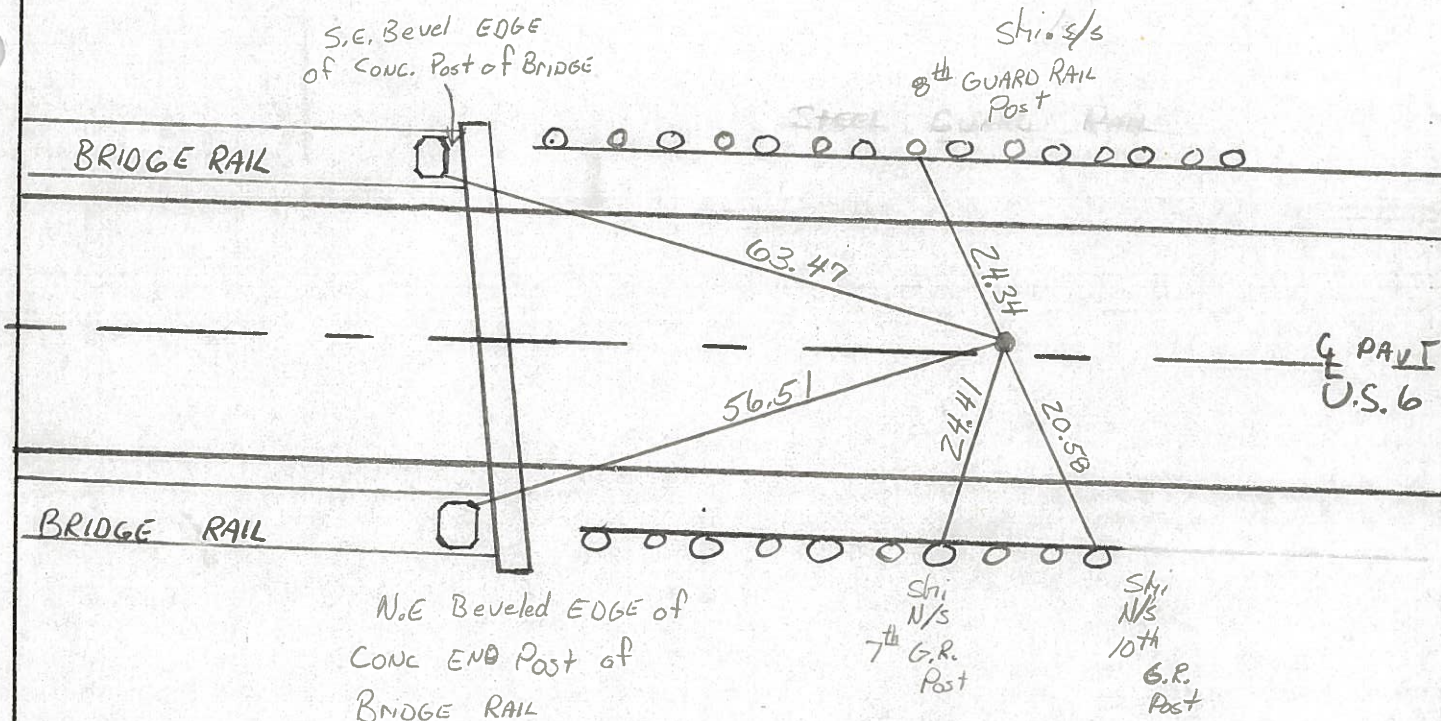
LEFT - € PAV'T. - RIGHT 0.6

10.8 TO Next EDGE PAVEMENT

S.L.M. 189+97



4-E



RECORD
 P.O.T. STA 190+00

County Williams S.R. U.S.G

Date 7-15-81

Township St. Joseph

Weather P. Cloudy

Section 27

Temp. +70°

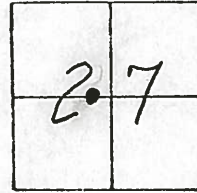
T6N, R1E

Personnel HOFFMAN

Loehrke

Householder

4-F



Fd. 3/4" Iron Pipe 2" Below Surface

Project STA ± 189 + 98

@ ctr of PAUT

SET SMALL R.R. SPK.

13.5' to N. EP. of USG

11-5-81 SWH

13.0' to S. EP. of USG

USE SE Beveled Edge of CONC. END Post of Bridge

Shiner S&S 2nd post

Steel Guard Rail

Duplex N/S

7th post

BRIDGE RAIL

63.47 49.07

24.88

St. Joseph

PAUT 57.16

U.S.G

RIVER BRIDGE

56.51

43.16

86.18

BRIDGE RAIL

2nd post

Duplex S/W/S END Post

USE NE COR. - Beveled Edge of CONC. END Post of Bridge Rail

Shiner N/S

P.O.T. STA. 190+00 ~ REC.

PERSONNEL TITLE PERSONNEL TITLE COUNTY Williams DATE 24 Feb '71
Red Beach _____
Newcomb _____
Knape _____
Wise _____
 S. R. US 6 WEATHER _____
 SEC. EDGERTON TEMP. _____

DESCRIPTION CONTROL POINTS JOB NO.

