

O.D.O.T. DISTRICT 2 SURVEY OFFICE (USE ONLY)

PERSONNEL _____ REFERENCE NO. 4 G SHEET 9 OF 41
 NOTES TRENKA DATE 7/16/18 ROUTE US 6
 H.C. LEU WEATHER CLOUDY COUNTY WILLIAMS
 R.C. HAGEMeyer TEMP. 75° TOWNSHIP ST. JOSEPH
 DWG BY NIESE PID 102827 SECTION 27
 T 6 N R 1 E

TYPE MONUMENT 1" IPIPE

~~ON SURFACE~~ - BELOW 6 1/2"

OFFSET Q PAVEMENT ON LT : RT
12.5' TO RT EDGE PAVEMENT

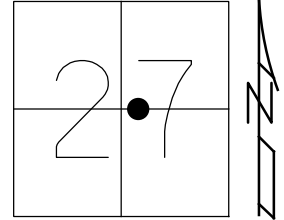
STATION: 191+80.98

HORZ.DATUM: NAD83 2011

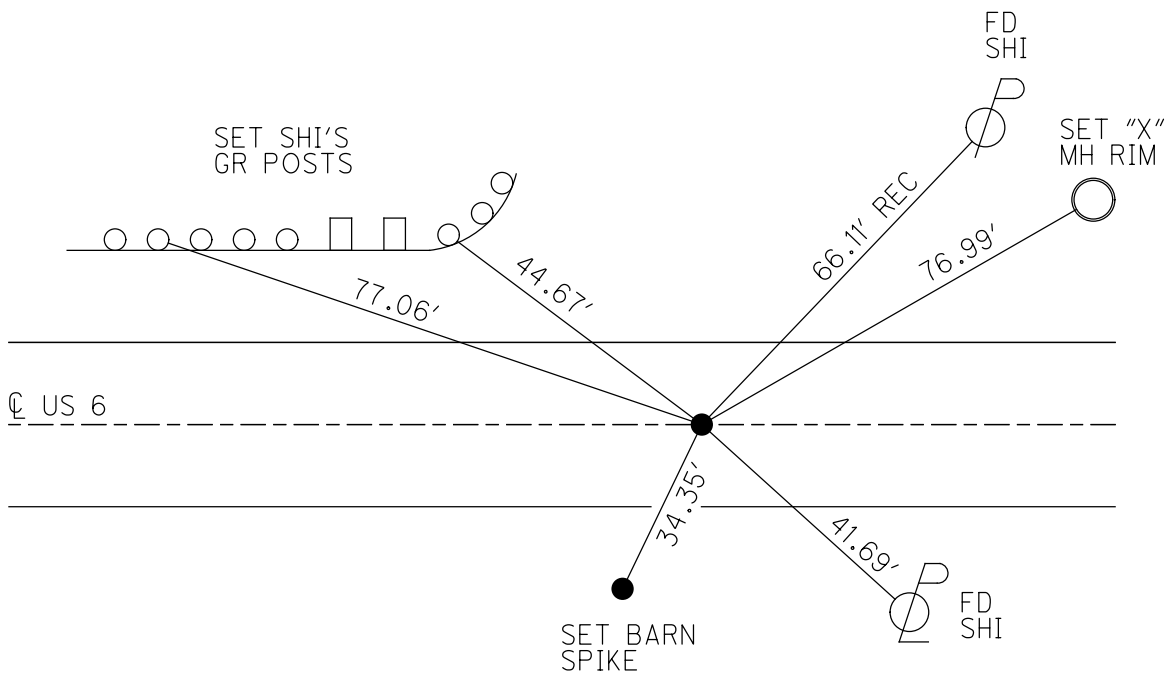
GEOID: NAVD88 2012A

GRID: NORTHING: 656848.087

EASTING: 1355193.266



RECORD: P.C.
 STA 15+54.32
 FD SM.R.R.SPIKE
 3" DOWN
 5/3/00, MB
 SET P.K./WASHER
 8/1/00, MRC
 FD 1" IPIPE
 6 1/2" DOWN
 REFG4
 2/27/17, DCH
 SET MAG/WASHER
 9/20/19, JLL



O.D.O.T. DISTRICT 2 SURVEY OFFICE

PERSONNEL

REFERENCE NO. 4-9

SHEET 12 OF 32

NOTES CANTERBURY

H.C. MOSEL

R.C. BARNAISEL III

DATE 5-3-00

WEATHER FAIR

TEMP. +68°

ROUTE US 6

COUNTY WILLIAMS

TOWNSHIP St. Joseph

SECTION 27

T. 6 N. R. 1 E

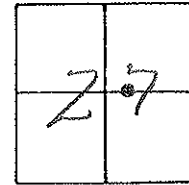
TYPE MONUMENT 3m RR SPK

ON SURFACE - BELOW 3"

LEFT - ~~C~~ PAW'T. - RIGHT yes

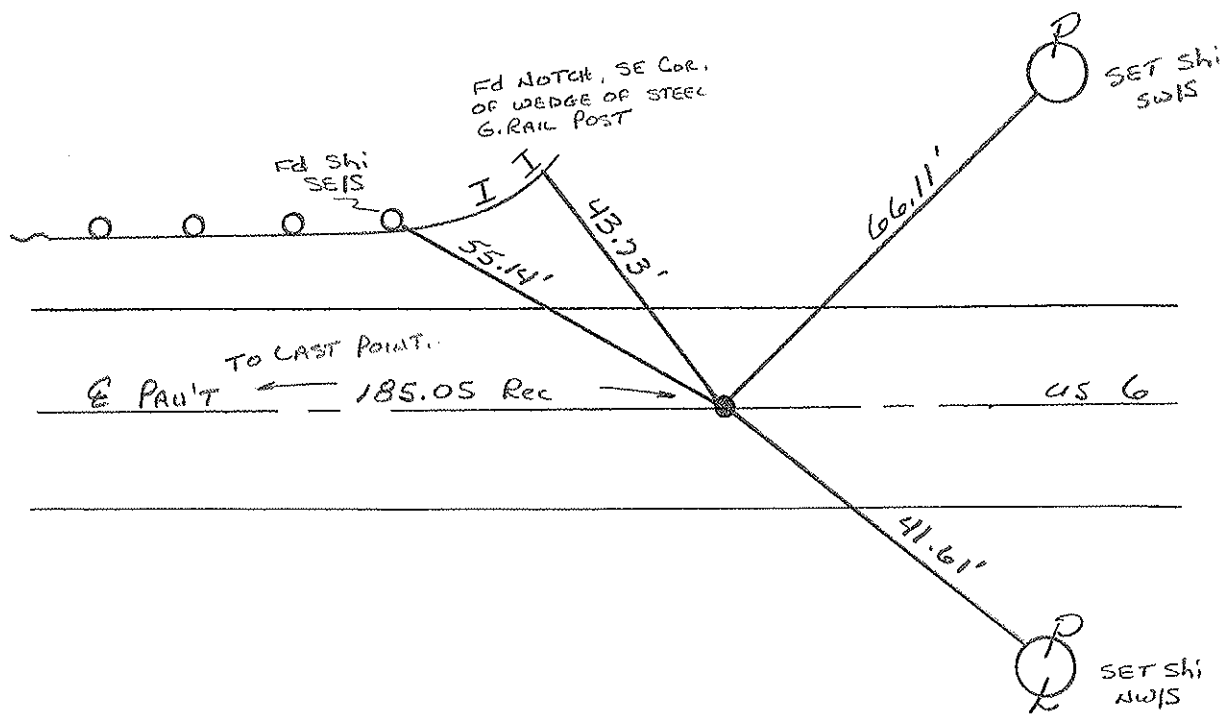
12.5 TO RT EDGE PAVEMENT

S.L.M. 191+88



Record: PC, Sta: 15+54.32
242.14' E. OF STEEL END DAM
OF BRIDGE, ST. Joseph RIVER

RESET PK/WASHER
8-1-00
M.R.C.



O.D.O.T. DISTRICT 2 SURVEY OFFICE

PERSONNEL

REFERENCE NO. 10

SHEET 10 OF

NOTES LOEHRKE

H.C. REED

R.C. BARNHISEL

Hoffman

DATE 4-12-88

WEATHER CLEAR

TEMP. +45

ROUTE U.S. 6

COUNTY Williams

TOWNSHIP St. JOSEPH

SECTION 27

T & N R L E

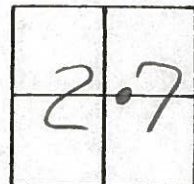
TYPE MONUMENT Set PK& WASHER 5-31-88
Sm R.R. SPIKE

ON SURFACE - ~~BELOW~~

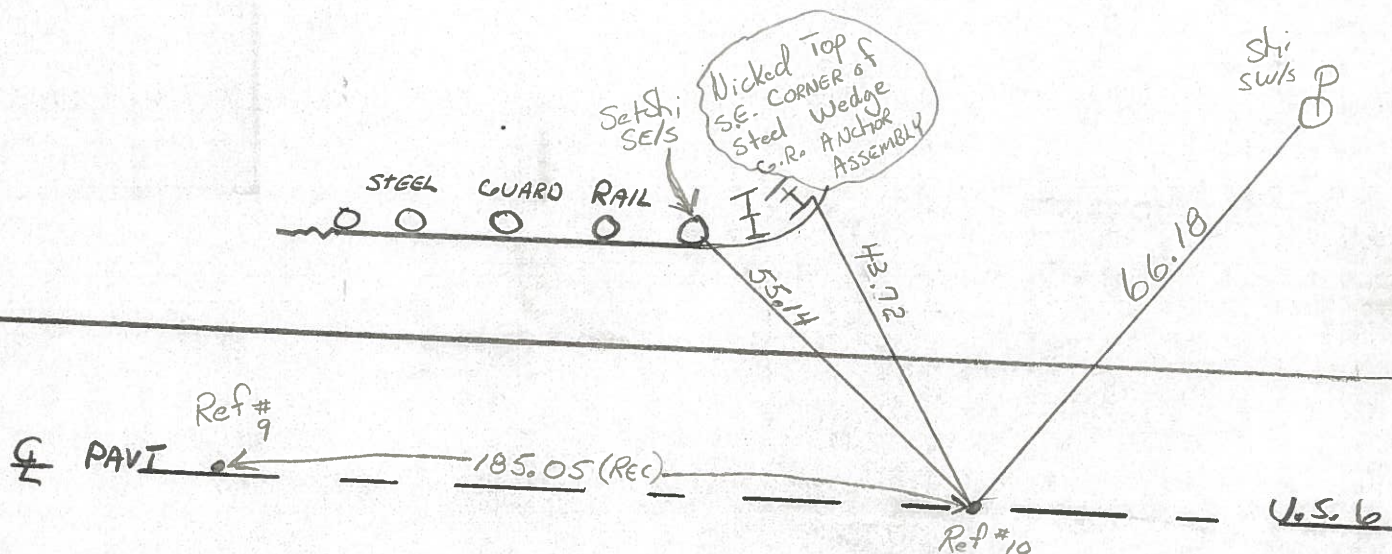
~~LEFT~~ - C PAV'T. - RIGHT

10.9 TO L EDGE PAVEMENT

S.L.M. 191 +83



4-G



RECORDED
 P.C. STA 15+54.32
 Pt. 242.14' E of Steel END DAM
 ST JOSEPH RIVER BRIDGE

County Williams S.R. U.S.G

Township St. Joseph

Section 27

T6N, R1E

Personnel Hoffman

Loehrke

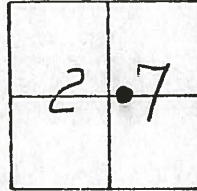
Householder

Date 7-15-81

Weather P. Cloudy

Temp. +70°

406



Fd. 3/4" IRON PIPE 2" Below PAUT.

PROJECT STA ± 191+83

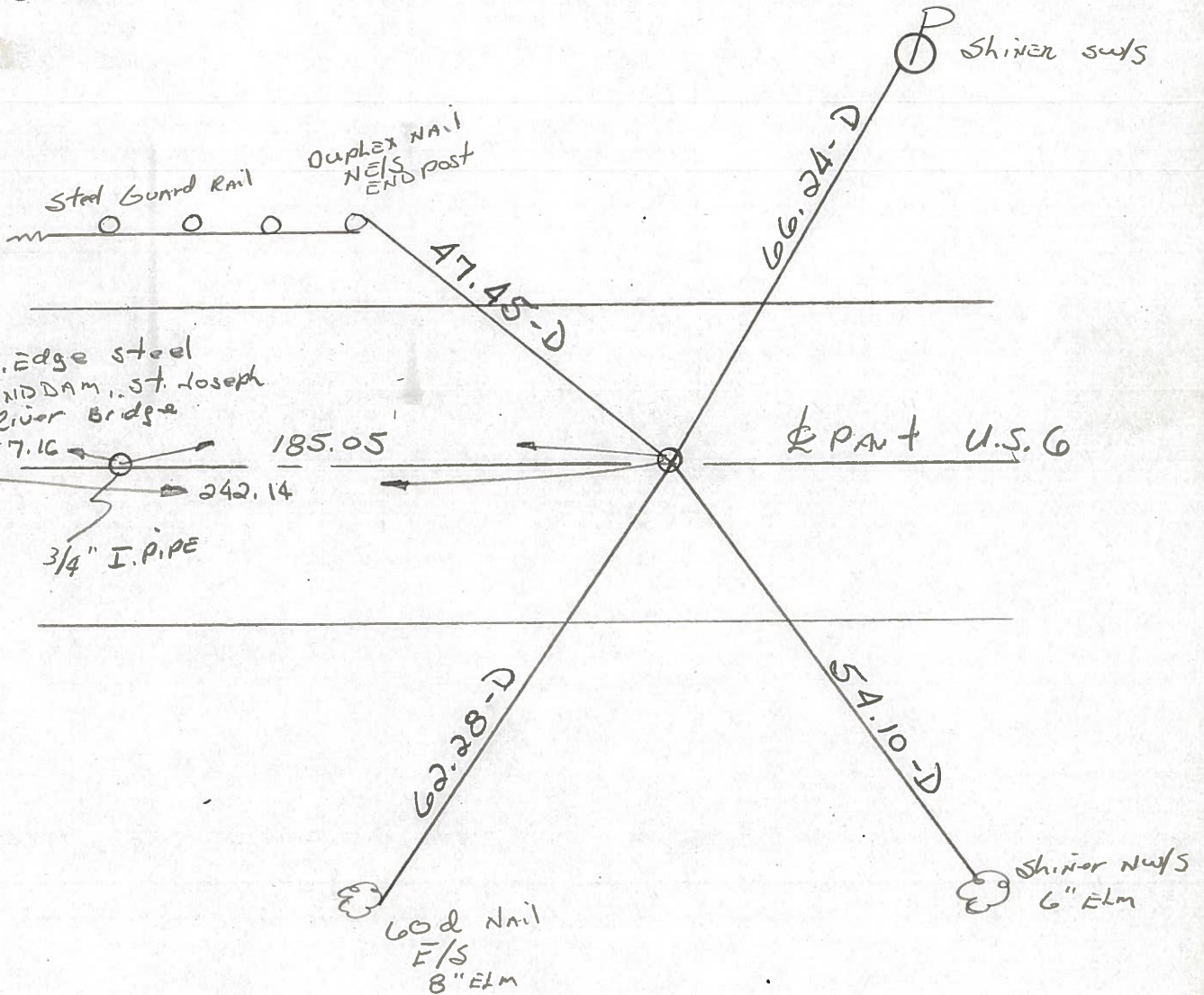
@ CTR. of PAUT

14.3 to N. EP.

SET SMALL R.R. SPK.

13.7 to S. EP.

11-5-81 SWH



P.C. STA. 15+54.32 ~ Rec.

PERSONNEL TITLE PERSONNEL TITLE

Red Beach
W. Knappe

COUNTY Williams DATE 18/19 Mar. '76

S. R. US 6 WEATHER

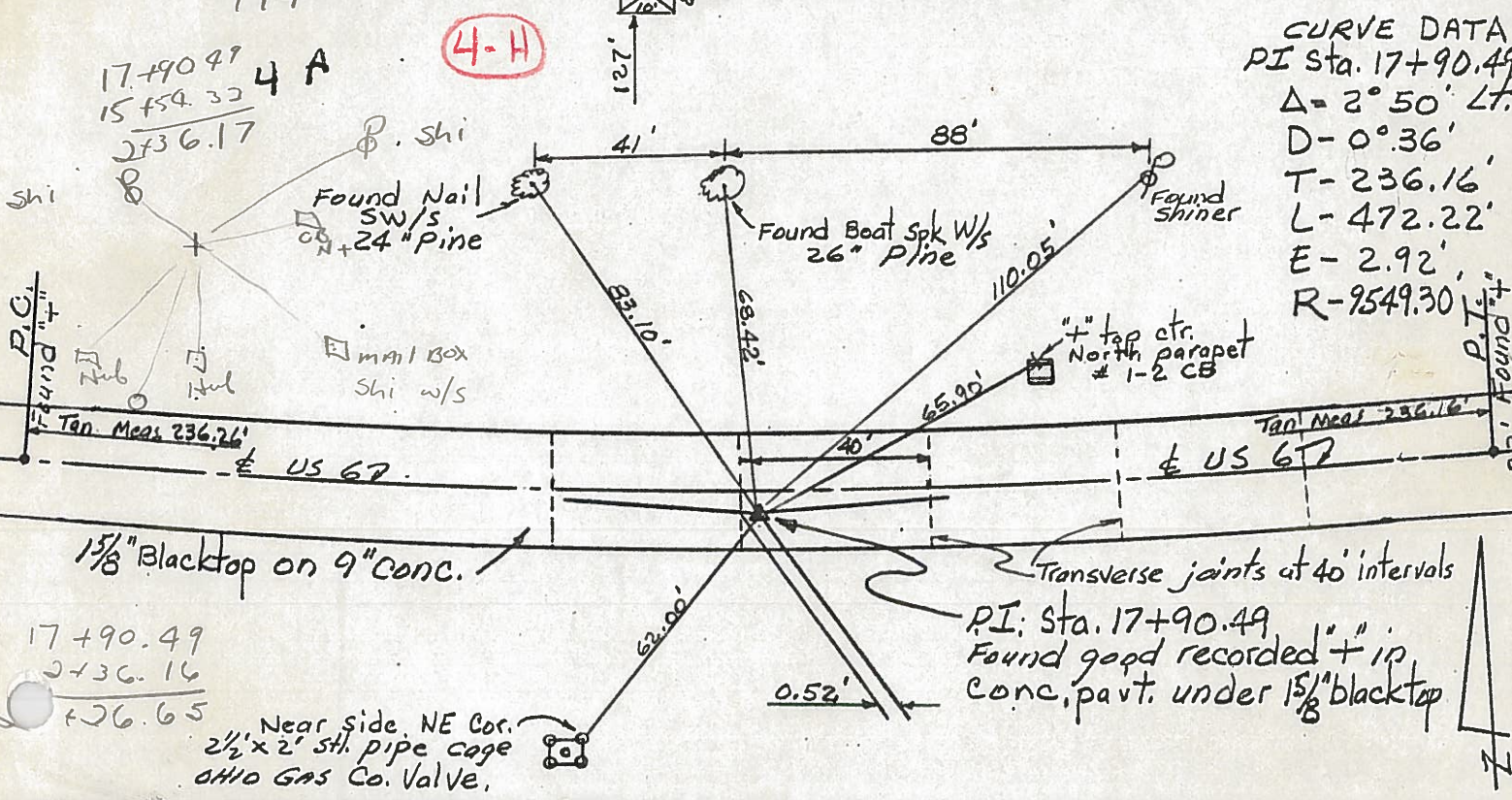
SEC. 27 St. Joseph Twp TEMP.

DESCRIPTION CONTROL POINTS JOB NO.

194+21.26

BERT E. RINK'S house

CURVE DATA
PI Sta. 17+90.49
 $\Delta = 2^{\circ} 50'$ LT.
D - $0^{\circ} 36'$
T - 236.16'
L - 472.22'
E - 2.92'
R - 9549.30'



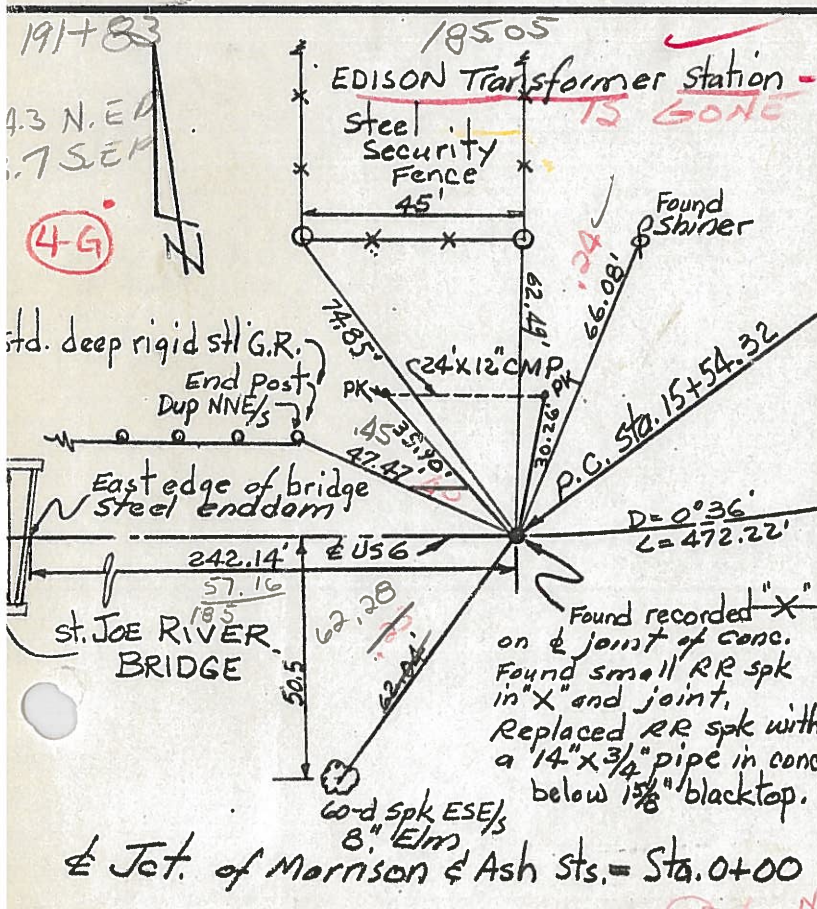
17+90.49
15+54.32
236.17
4 A

(4-H)

17+90.49
236.16
236.65

Near side, NE Cor.
2 1/2 x 2' stl. pipe cage
OHIO Gas Co. Valve.

PI: Sta. 17+90.49
Found good recorded '+' in
conc. pavt. under 1 1/8" blacktop



191+83

(4-G)

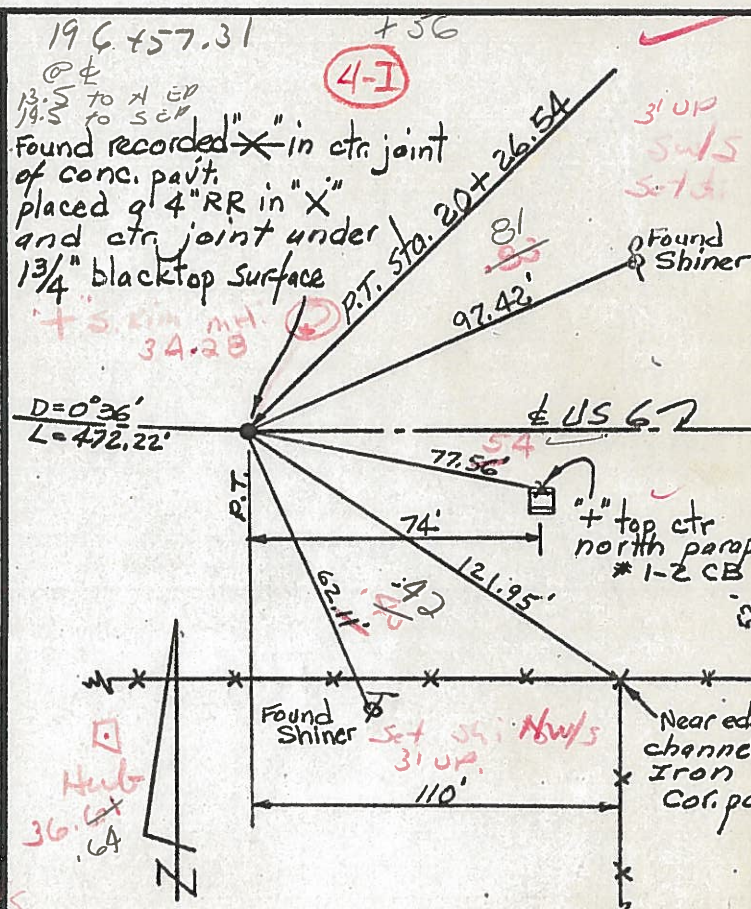
std. deep rigid stl. G.R.
End Post
Dup NNE 1/4

East edge of bridge
Steel enddam
St. Joe River Bridge

at Jct. of Morrison & Ash Sts. = Sta. 0+00

EDISON Transformer Station
Steel Security Fence
IS GONE

Found recorded 'X'
on joint of conc.
Found small RR spk
in 'X' and joint.
Replaced RR spk with
a 1 1/4 x 3/4" pipe in conc.
below 1 1/8" blacktop.



196+57.31

(4-I)

Found recorded 'X' in ctr joint
of conc. pavt.
placed 1/4" RR in 'X'
and ctr joint under
1 3/4" blacktop surface

D = 0° 36'
L = 472.22'

Hub
36.64
64

1" top ctr
north parapet
1-2 CB

Near edge
channel
Iron
Cor. po

PERSONNEL TITLE PERSONNEL TITLE

COUNTY W.I.

DATE 9/4/58

Long

Wise

Krahn

Pessefall

S. R. 6

WEATHER

Fair

E. Corp. Line Edgerton

SEC to Intersect. Rt #2

TEMP.

75°

DESCRIPTION

Witnesses to Control Points

LEFT

CENTER LINE

RIGHT

JOB NO.

5

4

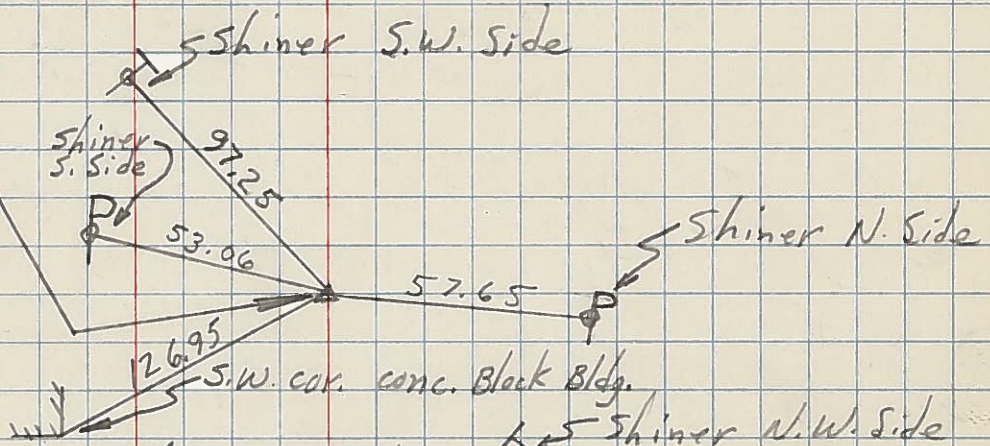
P.I. - Sta. 36+73.57

Δ 0°-26' RT

1" Iron Pipe

P.O.T - Sta. 30+13.6

No Record.

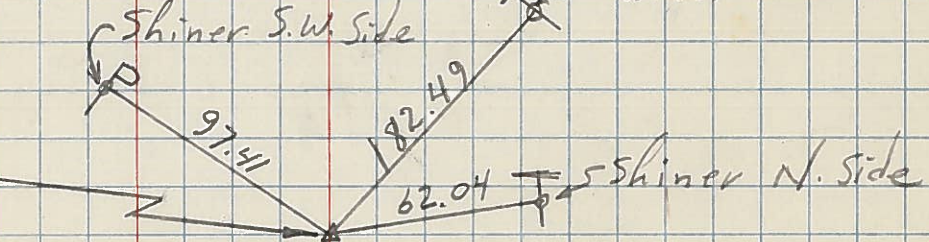


4-I

3

P.T. - Sta. 20+26.54

X-IN Pav't.



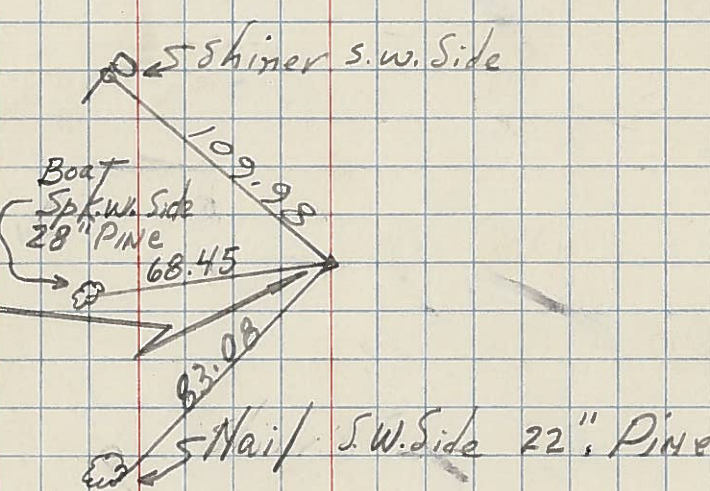
4-II

2

P.I. - Sta. 17+90.49

Δ = 2°-50' LT.

X-IN Pav't.



4-G

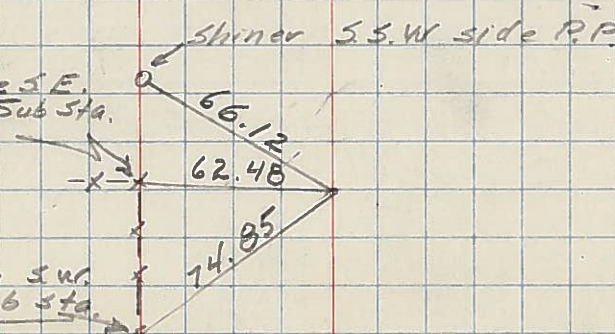
I

PC Sta. 15+54.32

X-in Pav't.

Near side S.E. Iron Cor. Post. Sub Sta. fence.

Near side S.W. Iron Cor. Post. Sub Sta. fence.



Note - station 12+00 = ctr. of St. Joseph River Bridge