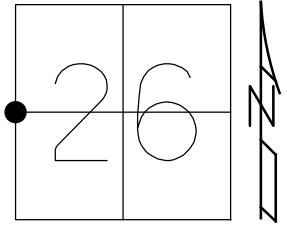


O.D.O.T. DISTRICT 2 SURVEY OFFICE (USE ONLY)

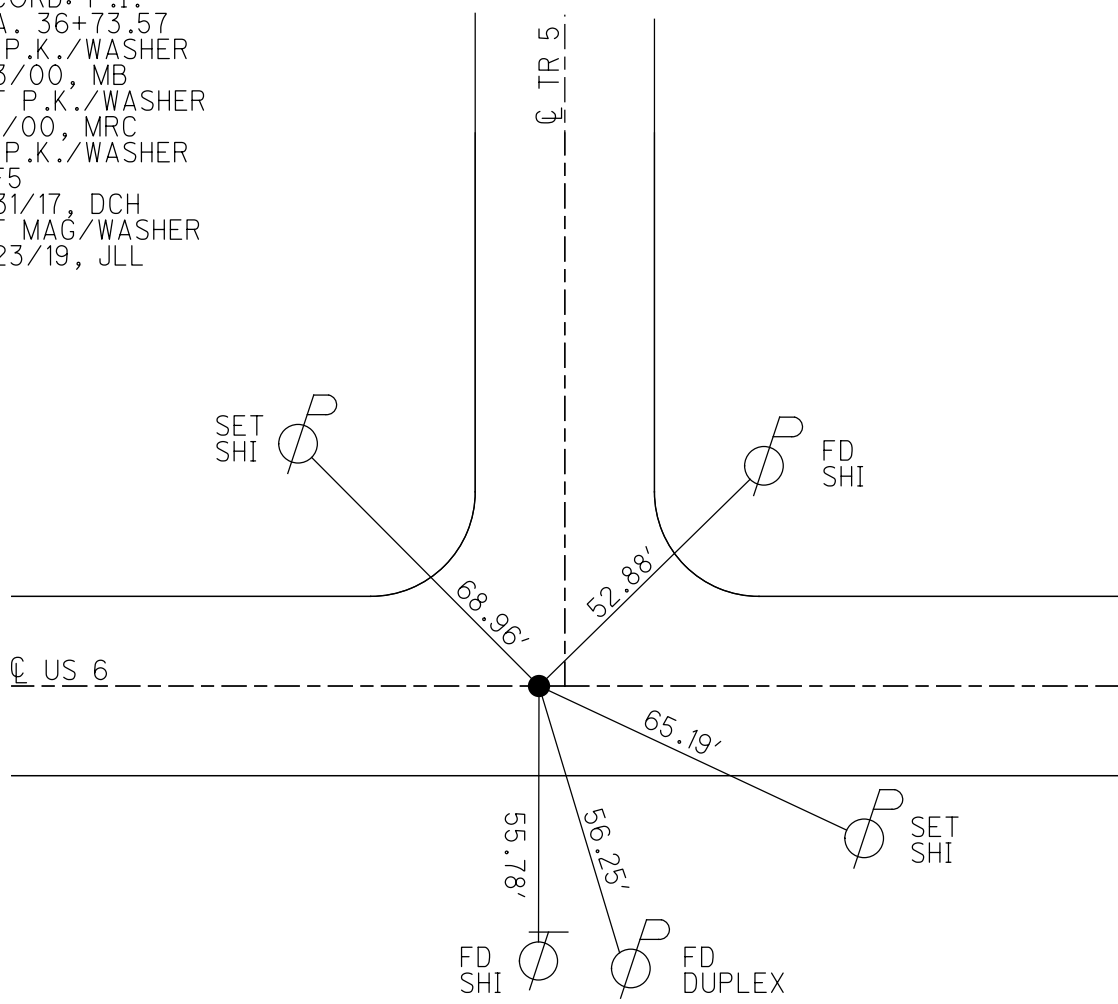
PERSONNEL _____ REFERENCE NO. 5 SHEET 12 OF 41
 NOTES TRENKA DATE 7/16/18 ROUTE US 6
 H.C. LEU WEATHER CLOUDY COUNTY WILLIAMS
 R.C. HAGEMeyer TEMP. 80° TOWNSHIP ST. JOSEPH
 DWG BY NIесе PID 102827 SECTION 26
 T 6 N R 1 E

TYPE MONUMENT P.K./WASHER
 ON SURFACE - ~~BELOW~~ ON _____
 OFFSET \varnothing PAVEMENT 0.4' LT : ~~RT~~
12.8' TO LT EDGE PAVEMENT 3' W OF \varnothing N
 STATION: 212+98.64



HORZ.DATUM: NAD83 2011 GEOID: NAVD88 2012A
 GRID: NORTHING: 656804.340 EASTING: 1357312.031

RECORD: P.I.
 STA. 36+73.57
 FD P.K./WASHER
 5/3/00, MB
 SET P.K./WASHER
 8/1/00, MRC
 FD P.K./WASHER
 REF5
 3/31/17, DCH
 SET MAG/WASHER
 9/23/19, JLL



O.D.O.T. DISTRICT 2 SURVEY OFFICE

PERSONNEL _____

REFERENCE NO. 5

SHEET 15 OF 32

NOTES CANTERBURY

H.C. MOSEK

R.C. BARNHISEL III

DATE 5-3-00

WEATHER FAIR

TEMP. +68°

ROUTE 6

COUNTY WILLIAMS

TOWNSHIP St. Joseph

SECTION 26

T 6 N R 1

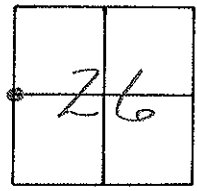
TYPE MONUMENT PK/WASHER

ON SURFACE - BELOW yes

LEFT- & PAU'T. - RIGHT 0.4'

12.8 TO CT EDGE PAVEMENT

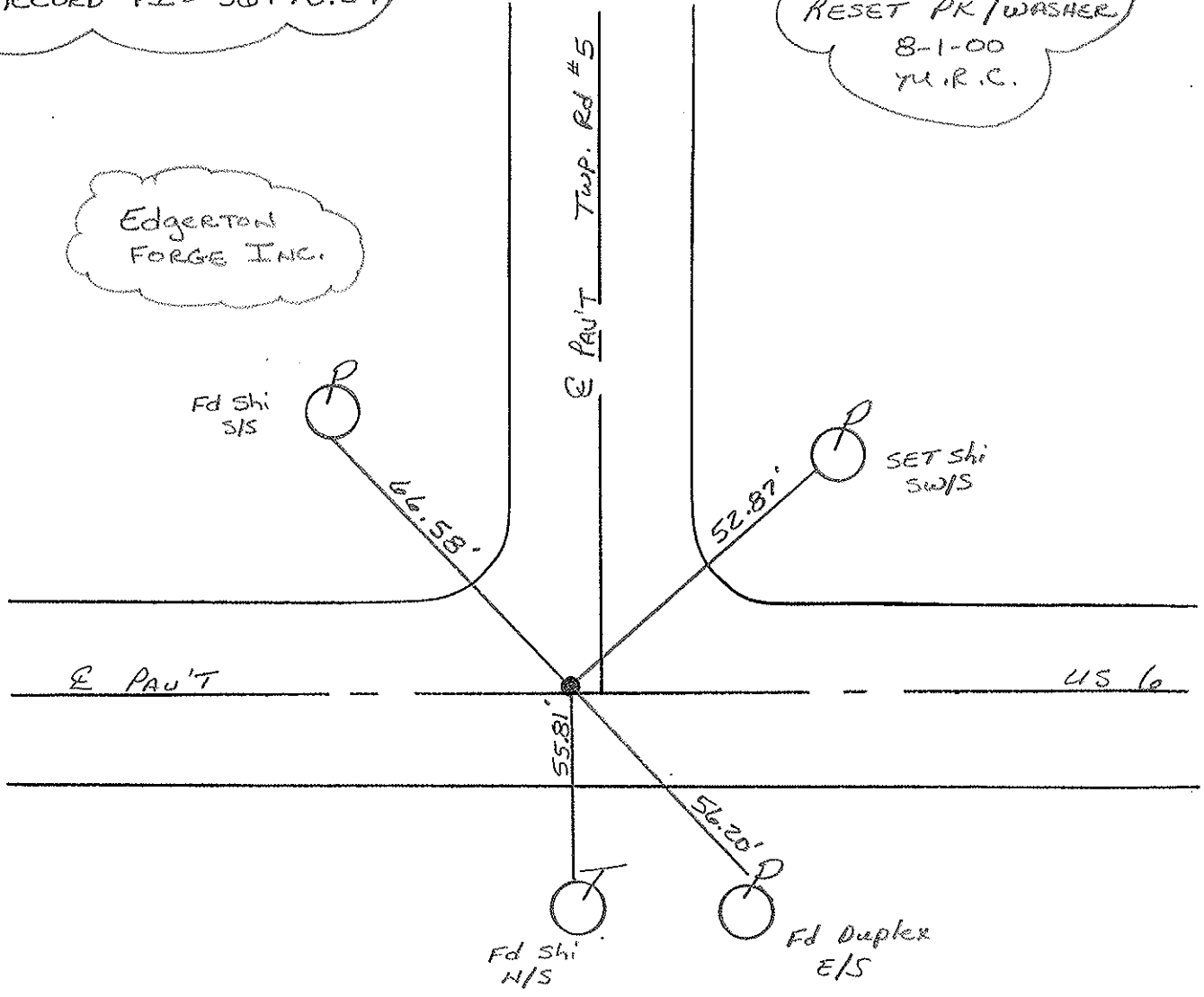
S.L.M. Z13+04 3' WEST OF E NORTH



RECORD PI = 36+73.57

RESET PK/WASHER
8-1-00
M.R.C.

Edgerton
FORGE INC.



O.D.O.T. DISTRICT 2 SURVEY OFFICE

PERSONNEL

REFERENCE NO. 5

SHEET 13 OF

NOTES Lochrke

H.C. RECD

R.C. Rambiscl

Hoffman

DATE 4-12-88

WEATHER Clear

TEMP. 75.0

ROUTE U.S. 6

COUNTY WILLIAMS

TOWNSHIP St JOSEPH

SECTION 26

T. 6 NR. 1 E

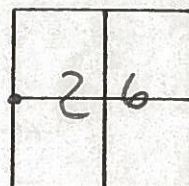
TYPE MONUMENT Reset TR & WASHER 6-6-88
Sm RR Spike

ON SURFACE - BELOW

LEFT - C PAV'T. - RIGHT 0.3' / 30' West of T.R. #5

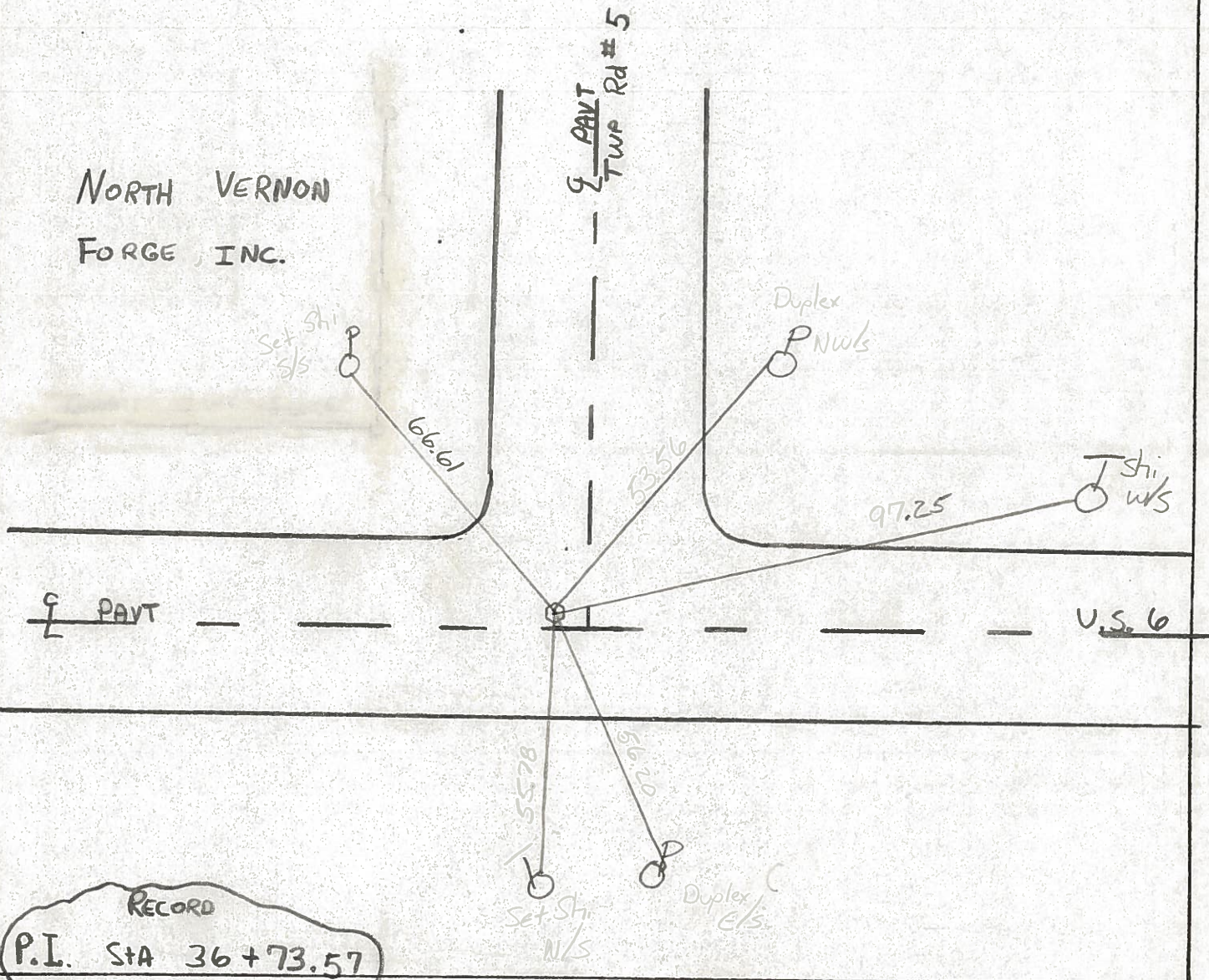
11.2 TO Rt EDGE PAVEMENT

S.L.M. 213 to 4



NORTH VERNON
FORGE INC.

TWP Rd # 5



RECORD
 P.I. STA 36+73.57

County Williams S.R. U.S. 6

Date 7-20-81

Township St. Joseph

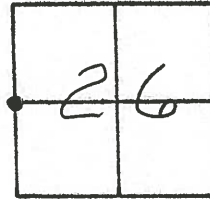
Weather RAIN

Section 26

Temp. +70°

T6N, R1E

Personnel HOFFMAN



Loehrke

Householder

#5

Fd. P.K. @ surface

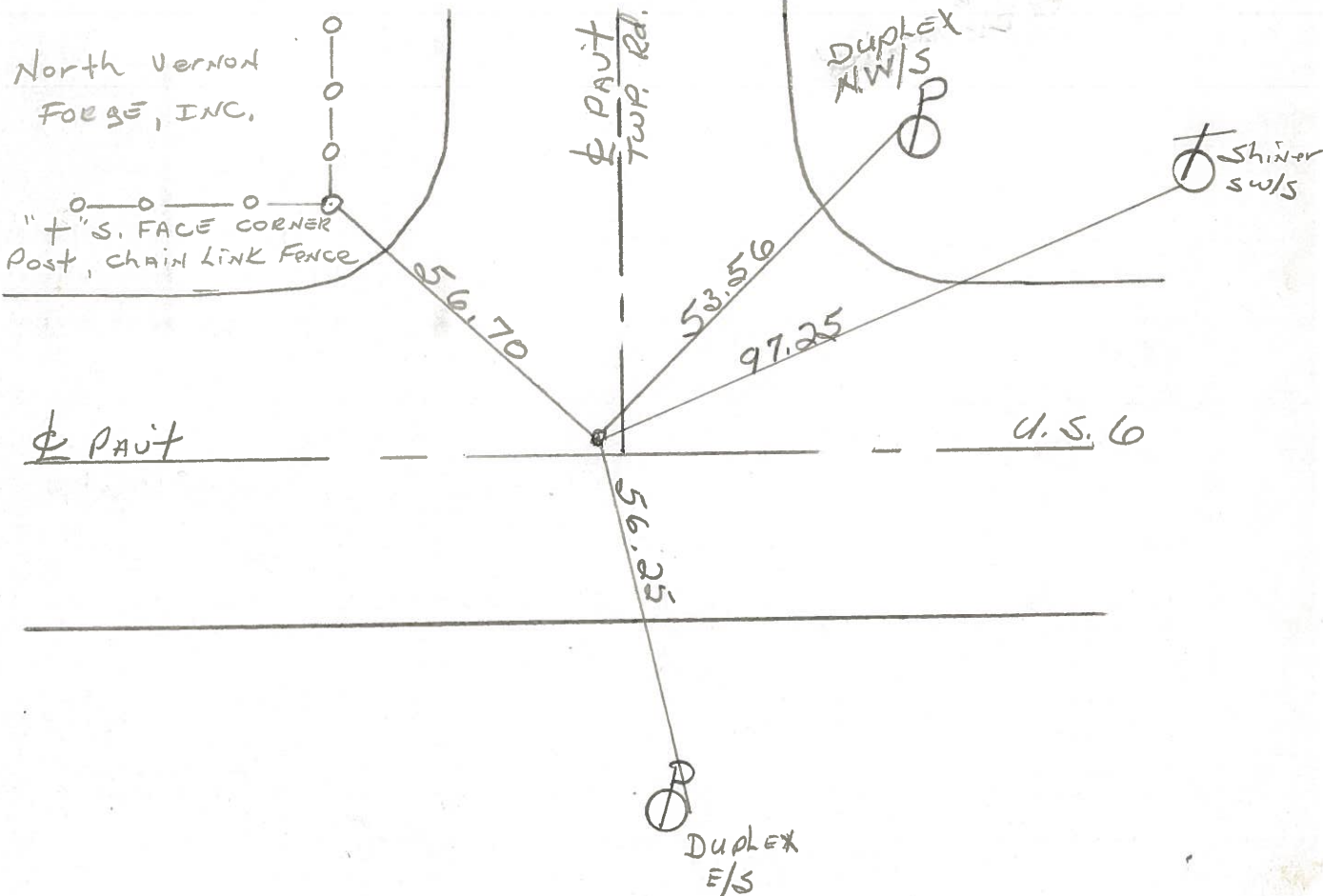
PROJECT STA ±213±04

.30' N. of $\frac{1}{2}$ PAUT U.S. 6.

11.20 TO S. EP.

SET SMALL R.R. SPK.

11-5-81 SWH.



P.I. STA. 36+73.57 ~ REC.

PERSONNEL TITLE PERSONNEL TITLE

COUNTY Wii

DATE

9/4/58

Longs

Wise

Krohn

Pessefall

S. R. 6

WEATHER

Fair

E. Corp. Line Edgerton

SEC. to Intersect. Rt #2

TEMP.

75°

DESCRIPTION

Witnesses to Control Points

JOB NO.

LEFT

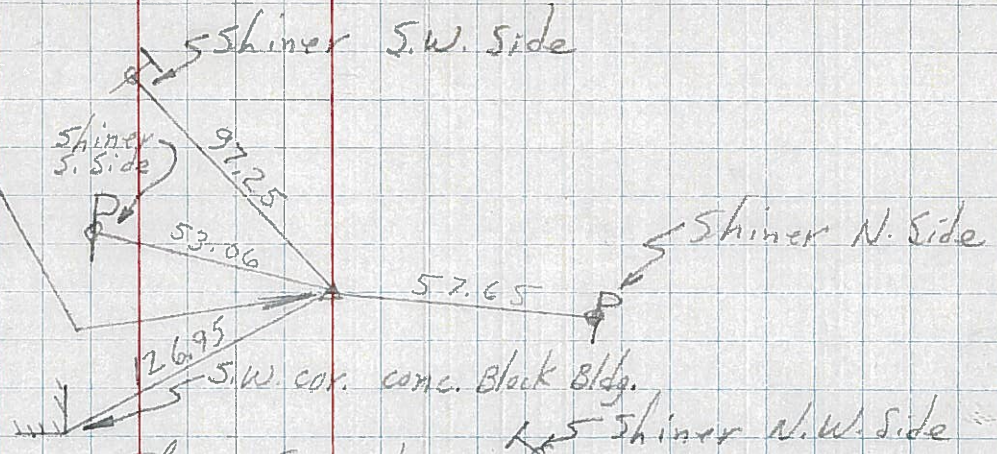
CENTER LINE

RIGHT

⑤

4

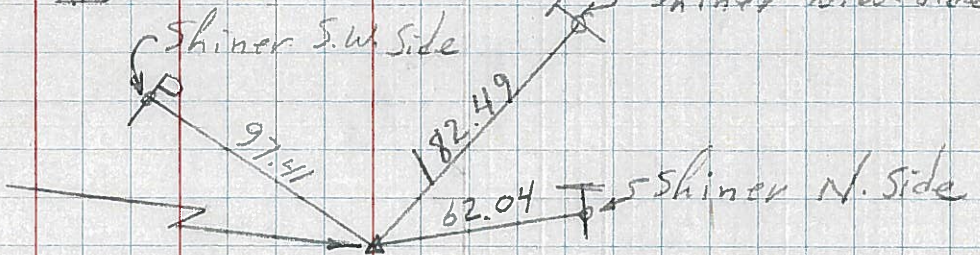
P.I. - Sta. 36+73.57
 $\Delta 0^\circ-26' RT$
1" Iron Pipe
P.O.T - Sta. 30+13.6
No Record.



④I

3

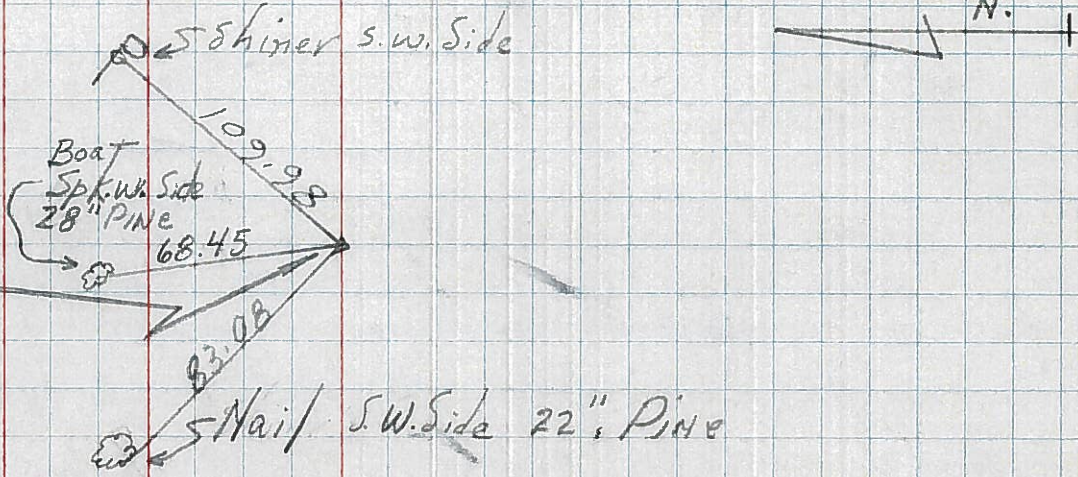
P.T. - Sta. 20+26.54
X-IN Part.



④-II

2

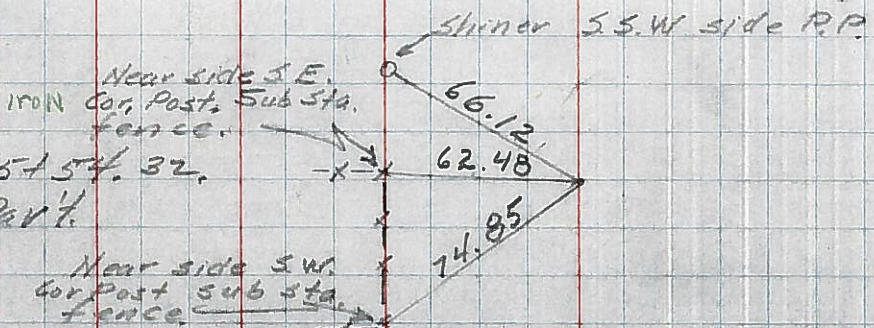
P.I. - Sta. 17+90.49
 $\Delta = 2^\circ-50' LT.$
X-IN Part.



④-G

I

PC Sta. 15+54.32
X-in Part.



Note - station 12+00 = ctr. of St. Joseph River Bridge