

O.D.O.T. DISTRICT 2 SURVEY OFFICE (USE ONLY)

PERSONNEL \_\_\_\_\_ REFERENCE NO. 5 A SHEET 13 OF 41  
 NOTES LEU DATE 7/16/18 ROUTE US 6  
 H.C. LEU WEATHER PTLY SUNNY COUNTY WILLIAMS  
 R.C. HAGEMAYER TEMP. 82° TOWNSHIP ST. JOSEPH  
 DWG BY NIESE PID 102827 SECTION 26  
 T 6 N R 1 E

TYPE MONUMENT P.K./WASHER

~~ON SURFACE~~ - BELOW 3"

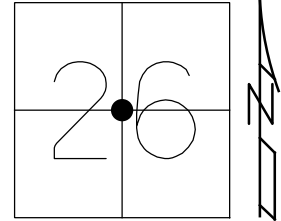
OFFSET 12.7'  $\text{C}$  PAVEMENT ON LT : ~~RT~~

TO LT EDGE PAVEMENT

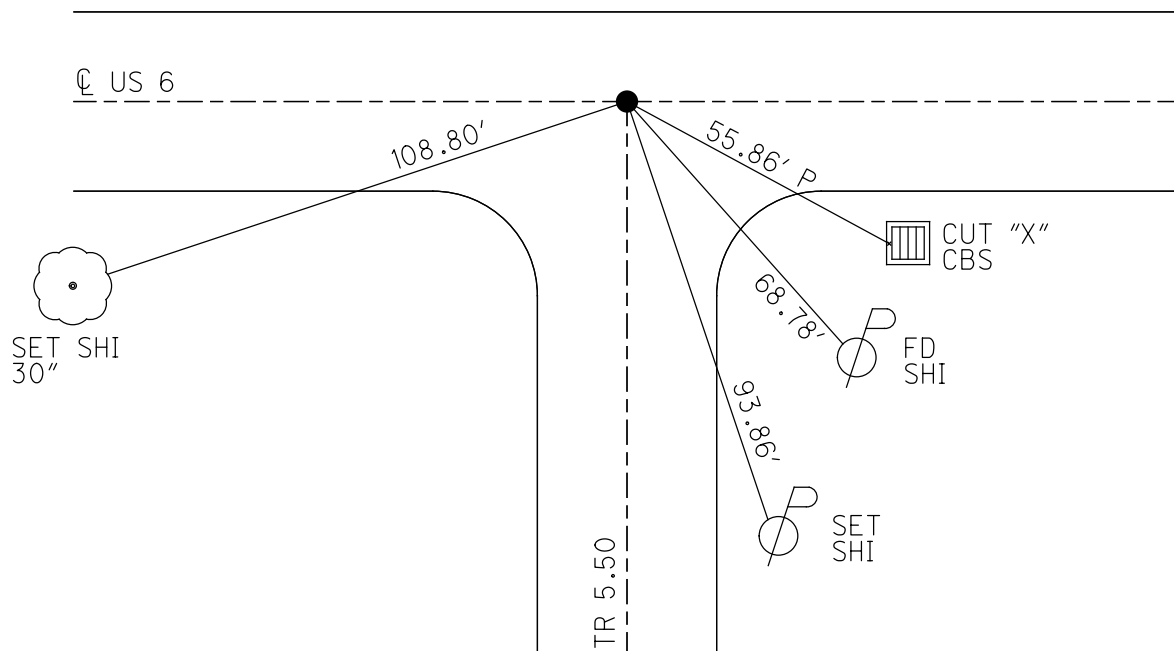
STATION: 239+45.29

HORIZ.DATUM: NAD83 2011 GEOID: NAVD88 2012A

GRID: NORTHING: 656745.622 EASTING: 1359957.839



RECORD:  
 FD P.K./WASHER  
 5/3/00, MB  
 SET P.K./WASHER  
 8/1/00, MRC  
 FD P.K.NAIL  
 3" DOWN  
 REFA5  
 3/31/17, DCH  
 SET MAG/WASHER  
 9/23/19, JLL



# O.D.O.T. DISTRICT 2 SURVEY OFFICE

PERSONNEL

REFERENCE NO. 5A

SHEET 14 OF     

NOTES LOEHKE

H.C. REED

R.C. BARNHISEL

Hoffman

DATE 4-12-88

WEATHER CLEAR

TEMP. +55

ROUTE U.S. 6

COUNTY Williams

TOWNSHIP St. JOSEPH

SECTION 26

T 6 N R 1 E

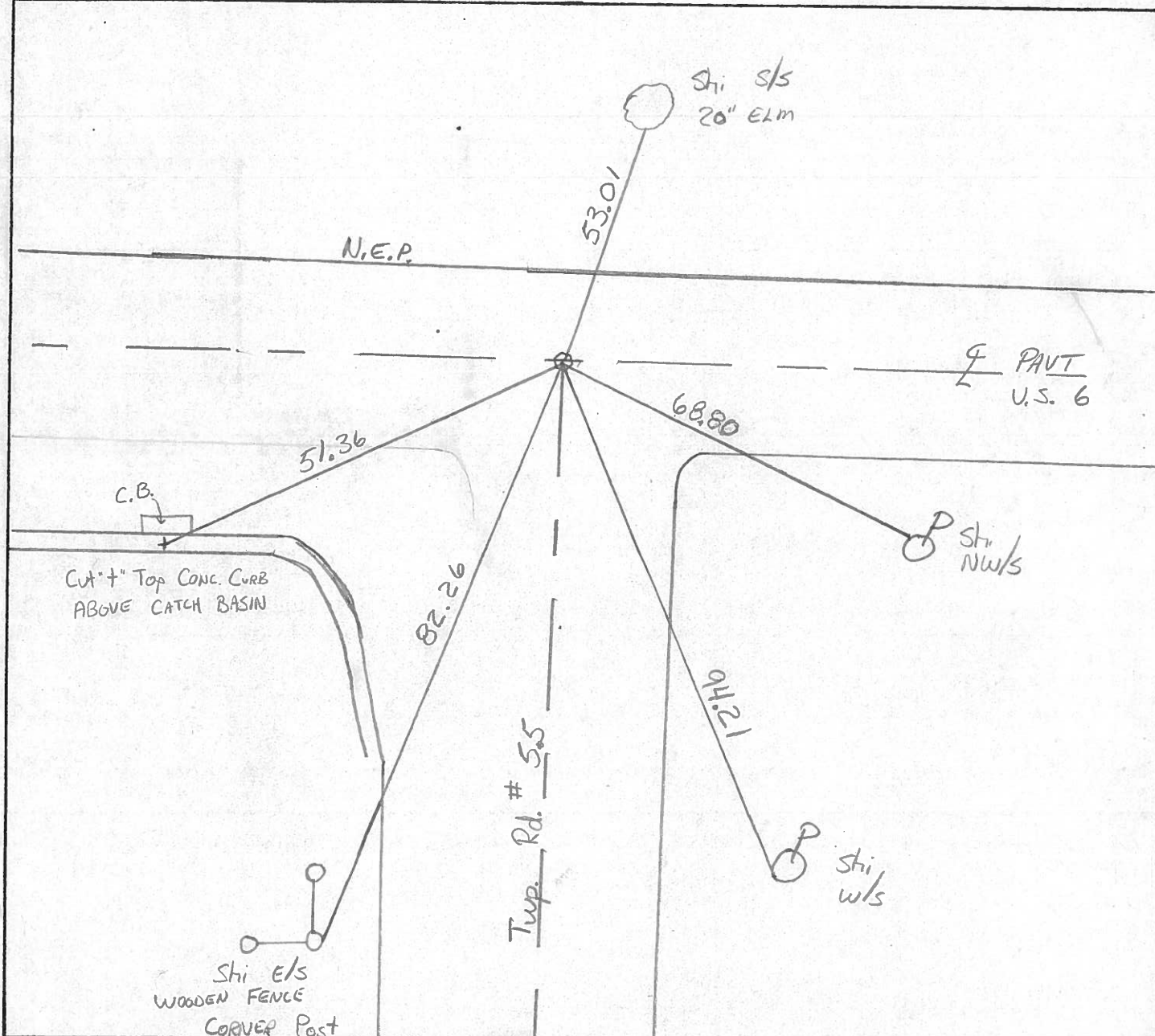
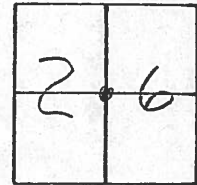
TYPE MONUMENT Reset PK & WASHER 6-6-88  
Sm. R.P. SPIKE

ON SURFACE - BELOW

LEFT - C PAV'T. - RIGHT Both ROADS

11.0 TO Lt EDGE PAVEMENT

S.L.M. 239150



County Williams S.R. U.S.G

Date 7-20-81

Township St. Joseph

Weather RAIN

Section 26

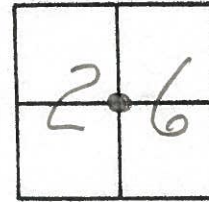
Temp. +70°

T&N, RLE

Personnel HOFFMAN

Loehrke

Householder

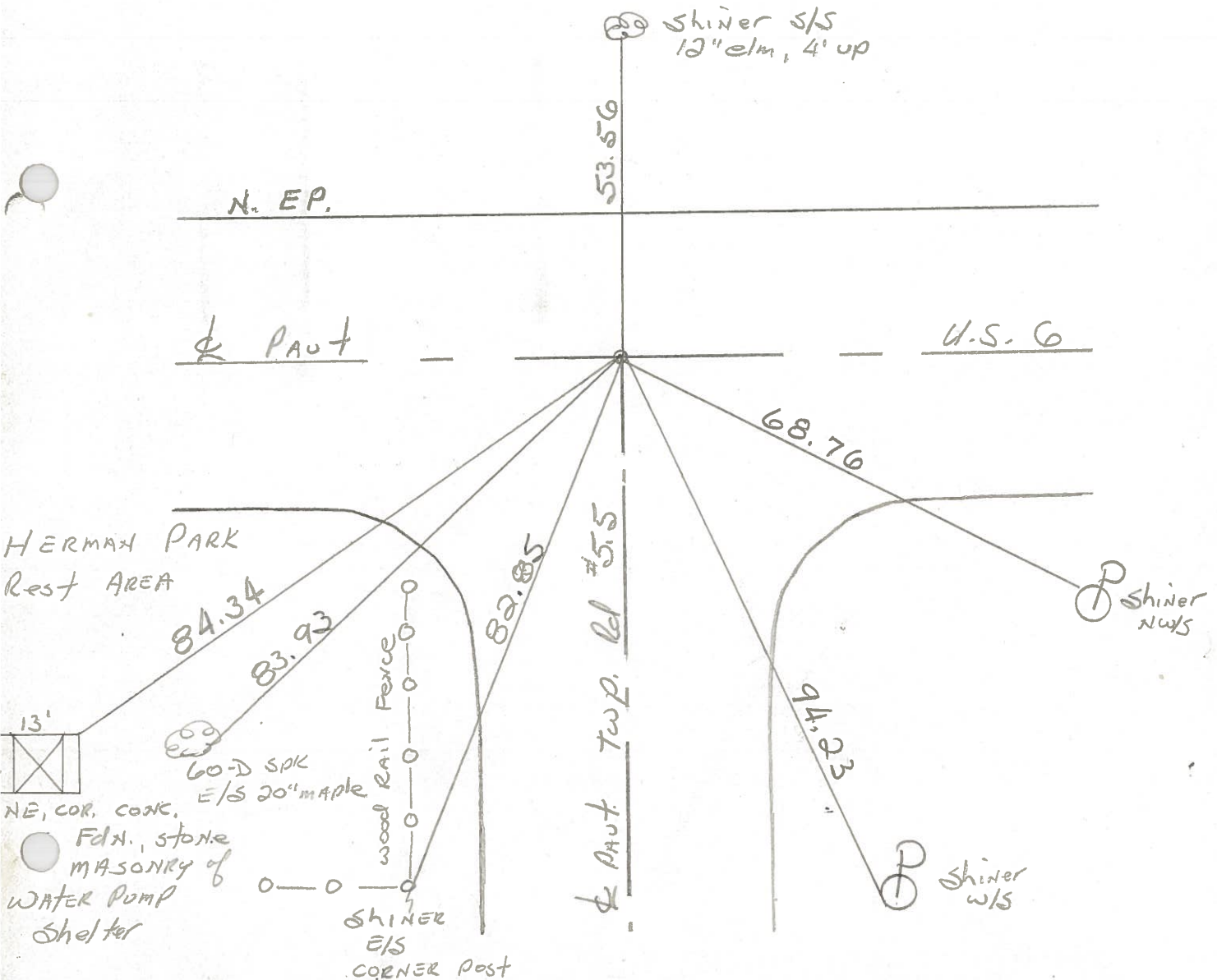


5-A

Fd. P.K. Nail @ surface  
@ ctr. of PAUTS.  
11.0' to N. EP. U.S.G

project STA ± 239+51

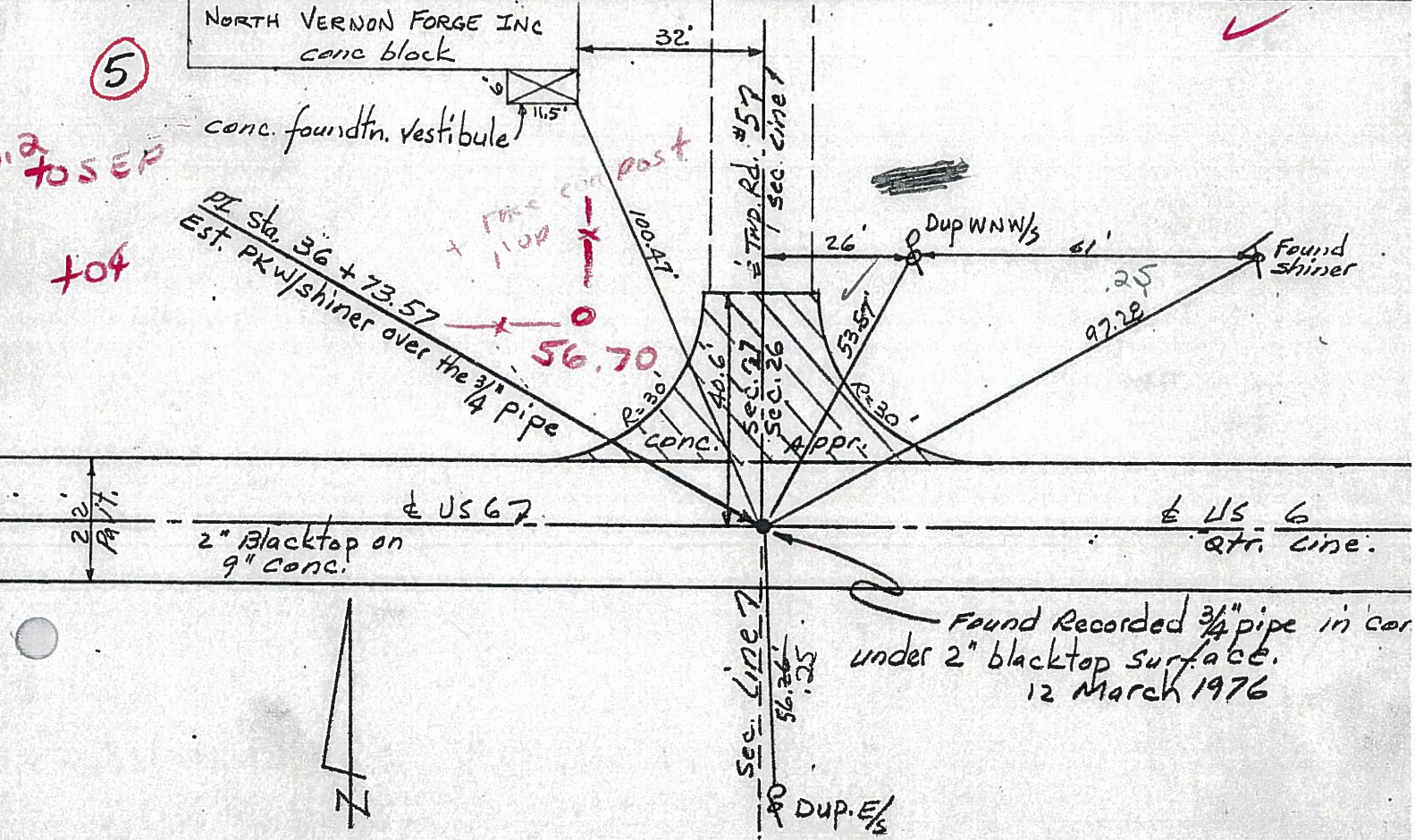
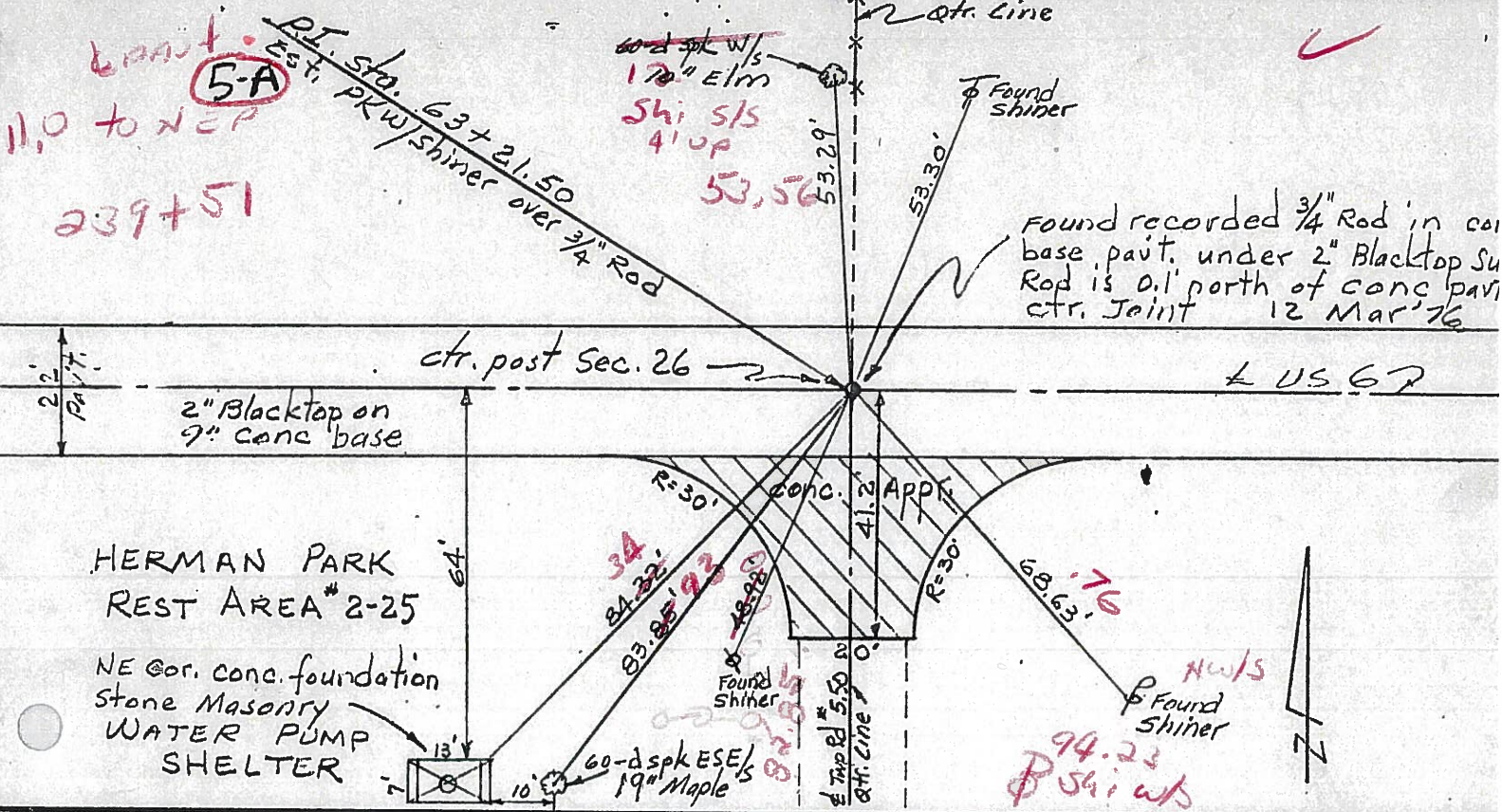
SET SMALL R.R. SPK.  
11-5-81 - SWH



P.I. STA. 63+21.50 ~ REC.



PERSONNEL	TITLE	PERSONNEL	TITLE	COUNTY	DATE
Red Beach				Williams	Mar 1976
W. Knappe				US 6	
				SEC. St. Joseph Twp	





PERSONNEL TITLE PERSONNEL TITLE

Louys

COUNTY Wi.

DATE 9/4/58

Wise

S. R. 6

WEATHER Fair.

Krohn

Edgerton E. Corp Line

Pessefall

SEC. To INT & N. Rt #2

TEMP. 75°

DESCRIPTION Witnesses to Control Points.

JOB NO. \_\_\_\_\_

**9**  
**7-A** P.T. - Sta. 173+65.94  
3/4" Iron Rod

**8**  
P.I. - Sta. 157+26.1  
 $\Delta = 26^\circ - 44' RT.$   
No Record.

**7**  
P.C. - Sta. 140+24.27  
3/4" Iron Rod

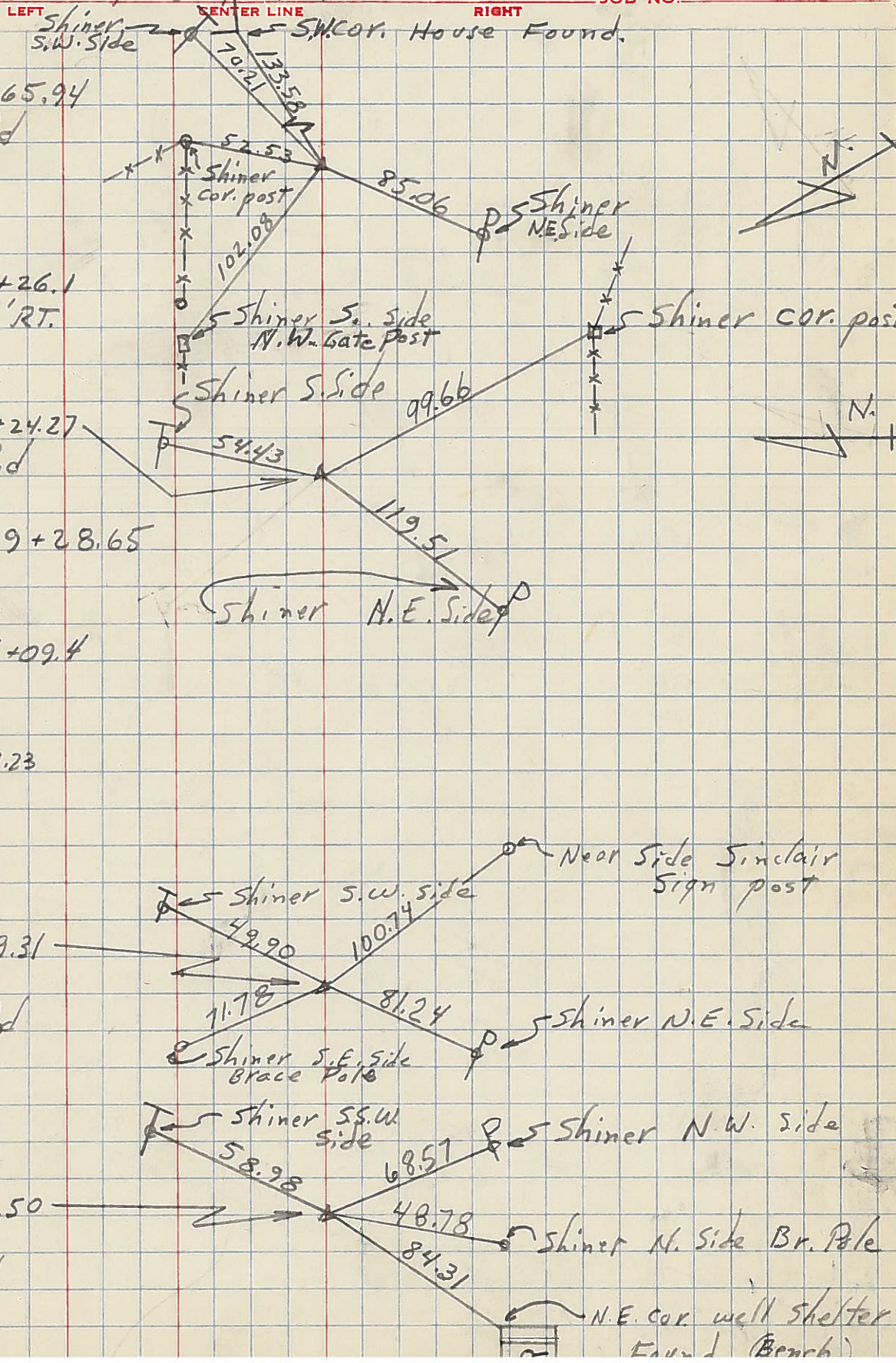
**6-A** P.O.T. - Sta. 129+28.65  
No Record.

P.O.T. - Sta. 116+09.4  
No Record.

P.O.T. - Sta. 102+89.23  
No Record.

**6**  
P.I. - Sta. 89+69.31  
 $\Delta = 0^\circ - 22' LT.$   
3/4" Sq. Iron Rod

**5-A**  
**5**  
P.I. - Sta. 63+21.50  
 $\Delta = 0^\circ - 02' LT.$   
3/4" Iron Rod



# O.D.O.T. DISTRICT 2 SURVEY OFFICE

PERSONNEL \_\_\_\_\_

REFERENCE NO. 5A

SHEET 16 OF 32

NOTES CANTERBURY

H.C. MOSER

DATE 5-3-00

ROUTE 6

R.C. BARNHISEL III

WEATHER FAIR

COUNTY WILLIAMS

TEMP. +68°

TOWNSHIP St. Joseph

SECTION 26

T 6 N R 1 E

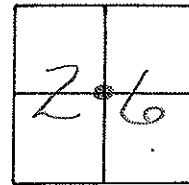
TYPE MONUMENT PK/WASHER

ON SURFACE - BELOW yes

LEFT - 0 PAV'T. - RIGHT 0.3'

12.7' TO LT EDGE PAVEMENT

S.L.M. Z39+50 ON E PAV'T South



RESET PK/WASHER  
 8-1-00  
 M.R.L.

