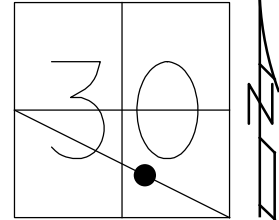


O.D.O.T. DISTRICT 2 SURVEY OFFICE (USE ONLY)

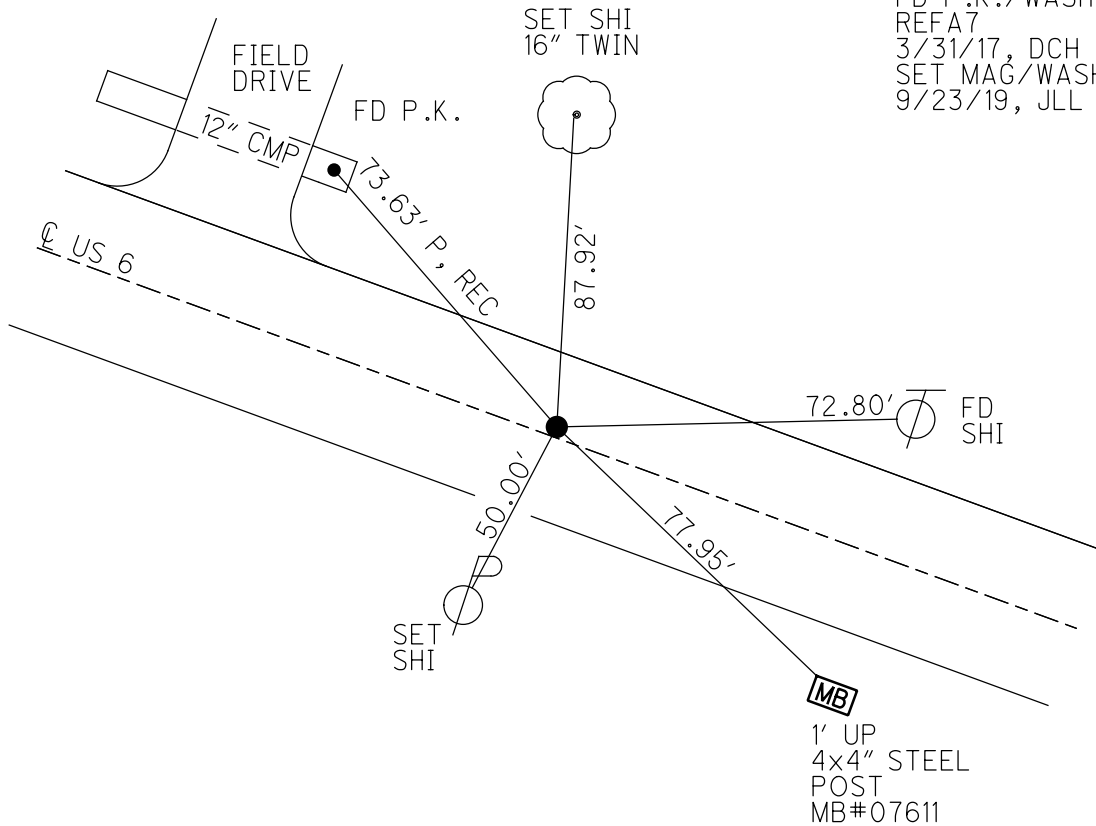
PERSONNEL \_\_\_\_\_ REFERENCE NO. 7 A SHEET 17 OF 41  
 NOTES RHOADES DATE 7/24/18 ROUTE US 6  
 H.C. O'DONNELL WEATHER CLOUDY COUNTY WILLIAMS  
 R.C. TRENKA TEMP. 72° TOWNSHIP CENTER  
 SECTION 30  
 DWG BY NIESE PID 102827 T 6 N R 2 E

TYPE MONUMENT P.K./WASHER  
 ON SURFACE - ~~BELOW~~ ON \_\_\_\_\_  
 OFFSET Q PAVEMENT 0.6' LT : ~~RT~~  
11.9' TO LT EDGE PAVEMENT  
 STATION: 349+91.74



HORZ.DATUM: NAD83 2011 GEOID: NAVD88 2012A  
 GRID: NORTHING: 655798.939 EASTING: 1370870.456

RECORD: P.I.  
 STA 173+65.94  
 FD P.K./WASHER  
 5/3/00, MB  
 SET P.K./WASHER  
 8/1/00, MRC  
 FD P.K./WASHER  
 REFA7  
 3/31/17, DCH  
 SET MAG/WASHER  
 9/23/19, JLL



**MB**  
 1' UP  
 4x4" STEEL  
 POST  
 MB#07611

# O.D.O.T. DISTRICT 2 SURVEY OFFICE

PERSONNEL

REFERENCE NO. 7-A

SHEET 20 OF 32

NOTES CANTERBURY

H.C. MOSEK

R.C. BARNHISEL

DATE 5-3-00

WEATHER FAIR

TEMP. +68°

ROUTE us 6

COUNTY Williams

TOWNSHIP CENTER

SECTION 30

T6 N R 2 E

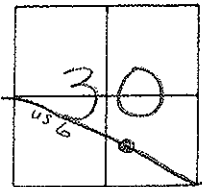
TYPE MONUMENT PK/WASHER

ON SURFACE - ~~BELOW~~ YES

LEFT - 0 PAV'T. - RIGHT 0.6'

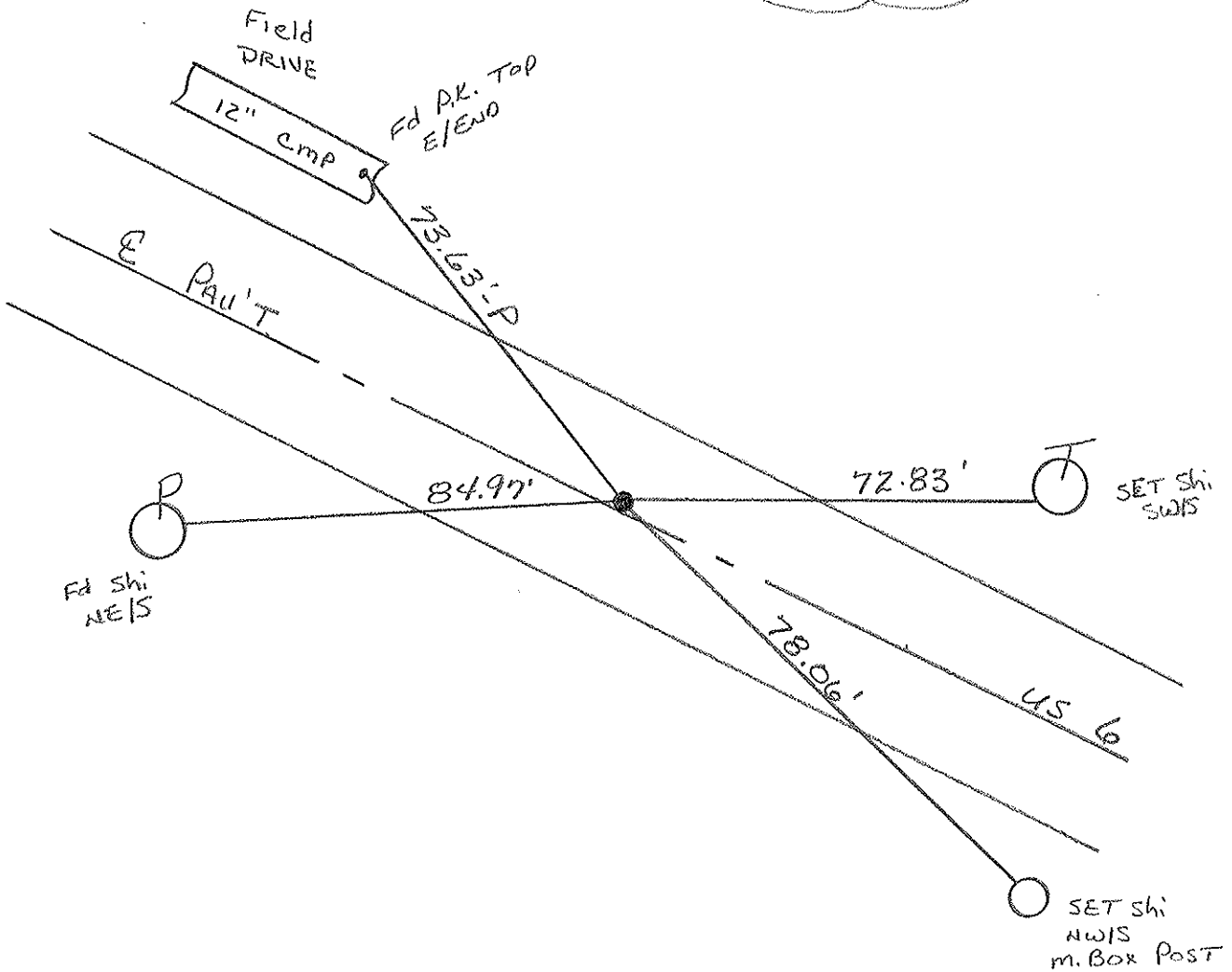
11.9' TO LT EDGE PAVEMENT

S.L.M. 350+02



Record PI: Sta: 173+65.94

RESET PK/WASHER  
8-1-00  
M.R.C.



# O.D.O.T. DISTRICT 2 SURVEY OFFICE

PERSONNEL

REFERENCE NO. 18

SHEET 18 OF     

NOTES LOEHRKE

H.C. REED

R.C. BARNHISEL

Hoffman

DATE 4-12-88

WEATHER CLEAR

TEMP. +60

ROUTE U.S. 6

COUNTY WILLIAMS

TOWNSHIP CENTER

SECTION 30

T 6 N R 2 E

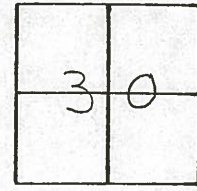
TYPE MONUMENT PK and WASHER 6-2-88  
5m R.R. Spike

ON SURFACE - BELOW     

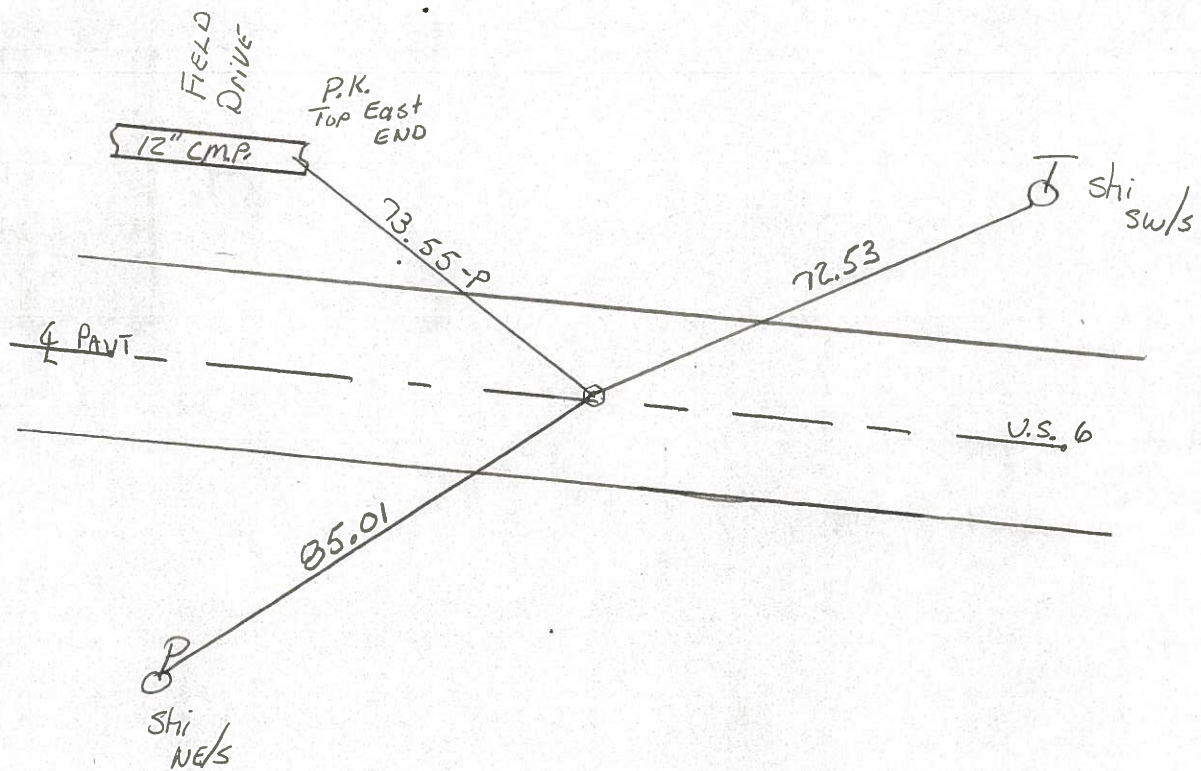
LEFT -      PAV'T. - RIGHT 0.4

10.9 TO Lt EDGE PAVEMENT

S.L.M. 350 to 2



**7-A**



RECORD  
 P.I. Sta 173+65.94

County Williams S.R. U.S. 6

Date 7-20-81

Township Center

Weather Cloudy

Section 30

Temp. +75°

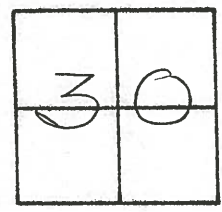
T6N, R2E

Personnel Hoffman

Loehrke

Householder

7-A

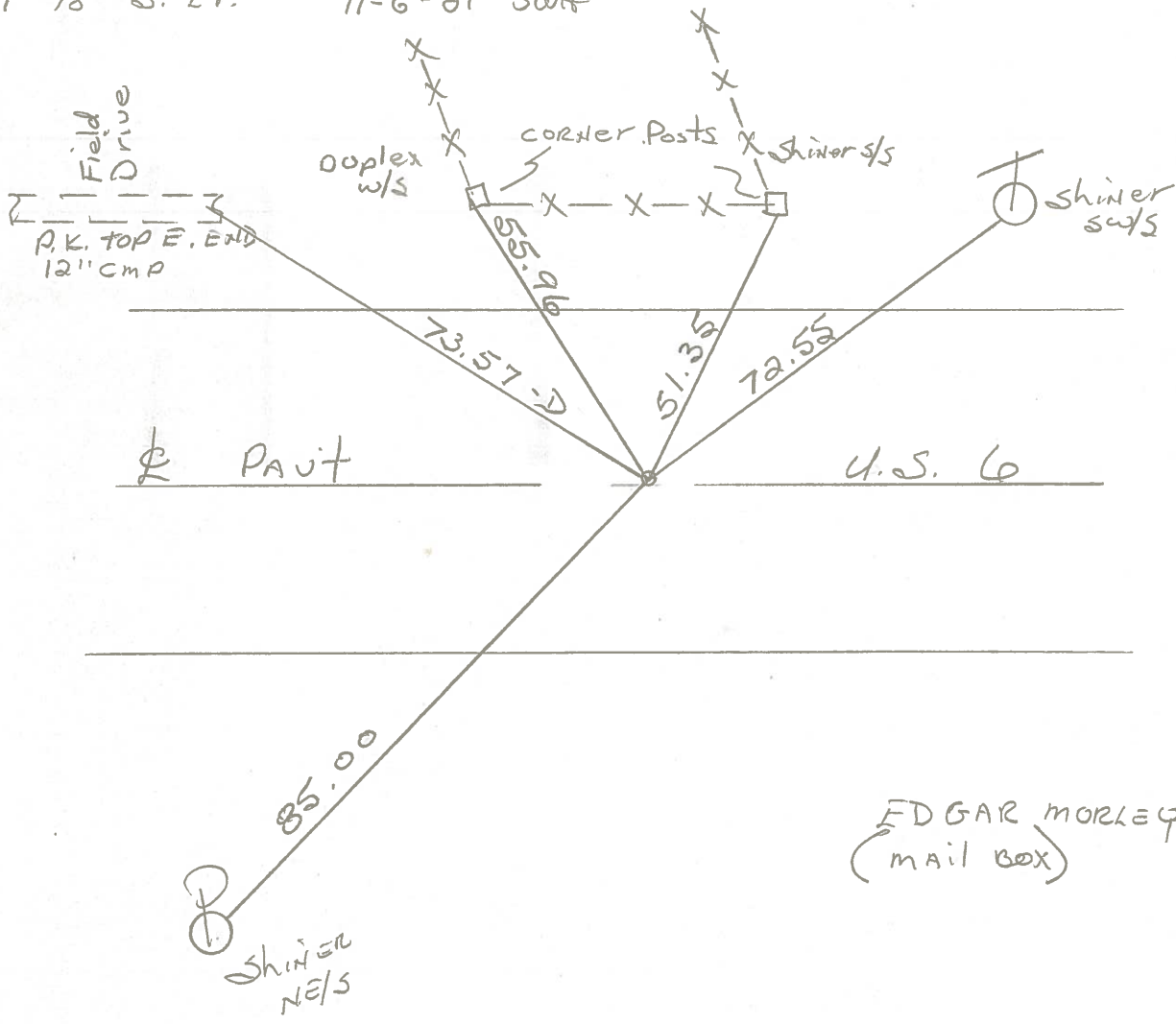


Fd. P.K. Nail 1" Below Surface

Project STA. ± 349 + 98

10.7' to N. EP.  
11.1' to S. EP.

SET SMALL R.R. SPK.  
11-6-81 SWH



PERSONNEL TITLE PERSONNEL TITLE

Red Beach

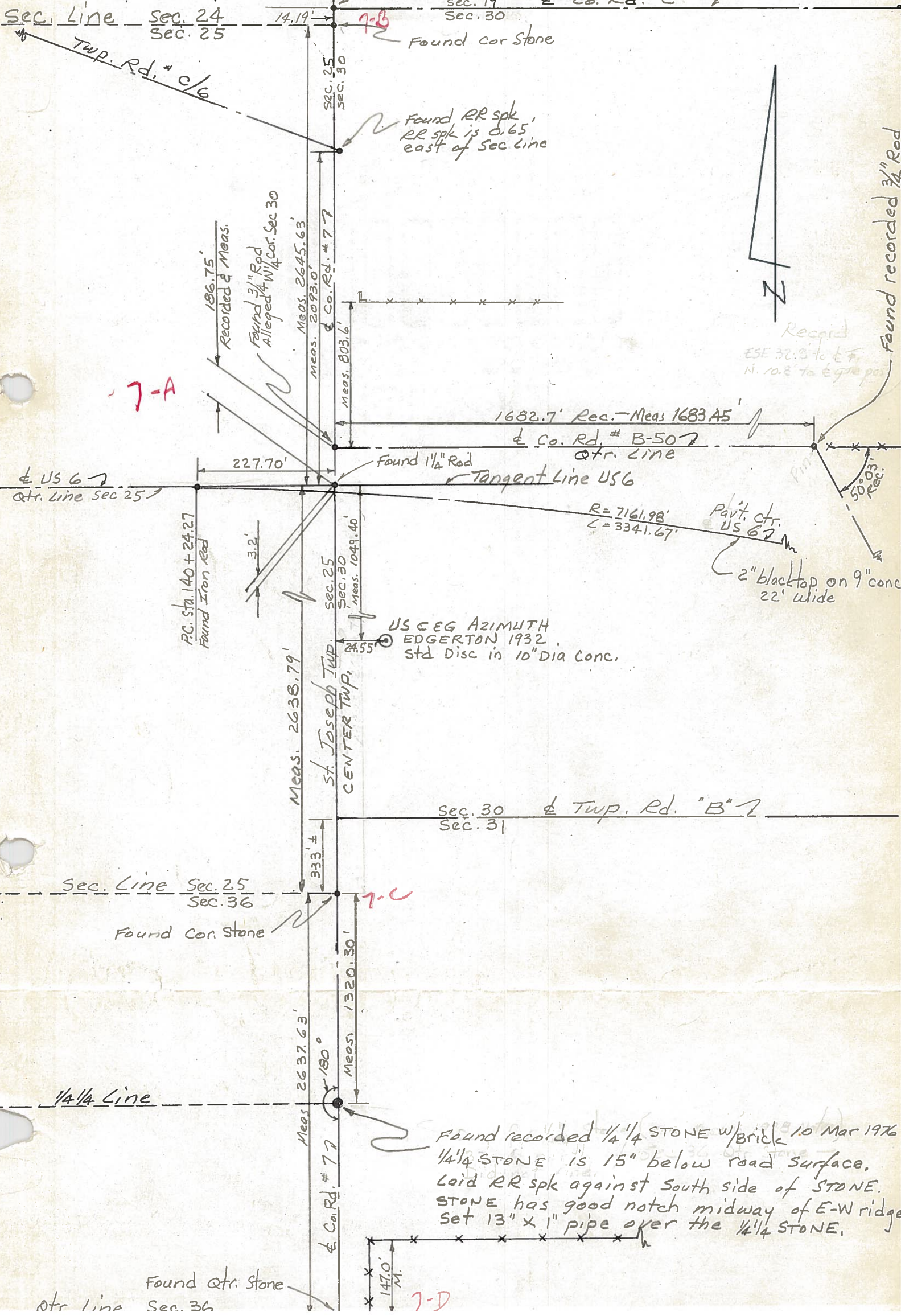
COUNTY Williams DATE Feb 1976

W. Knape

S. R. US 6 & Co Rd #7 WEATHER

SEC. St. Joe & Center Twp. TEMP.

DESCRIPTION Twp Line Road - Co. Rd. #7 JOB NO.



7-A

7-B

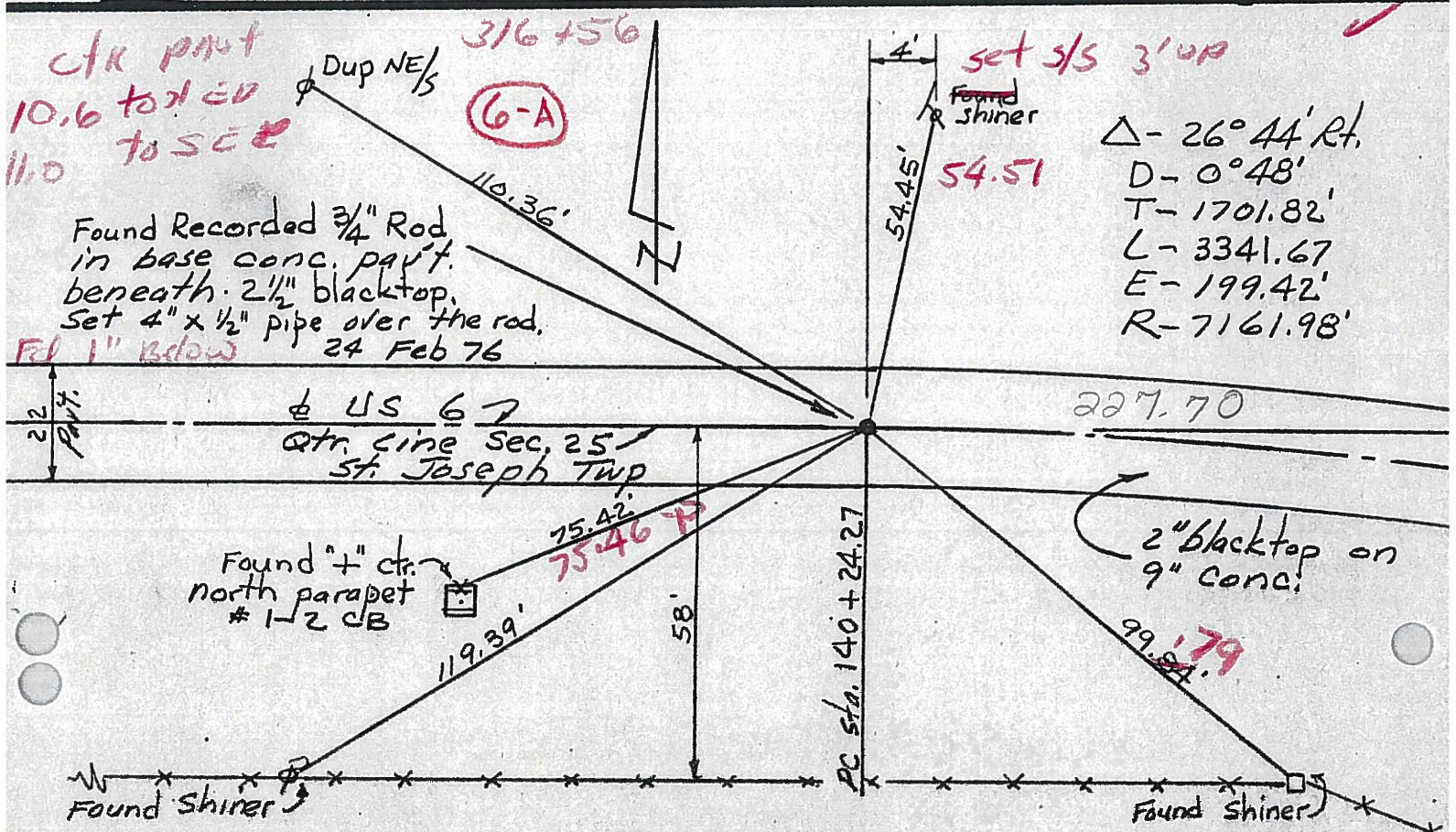
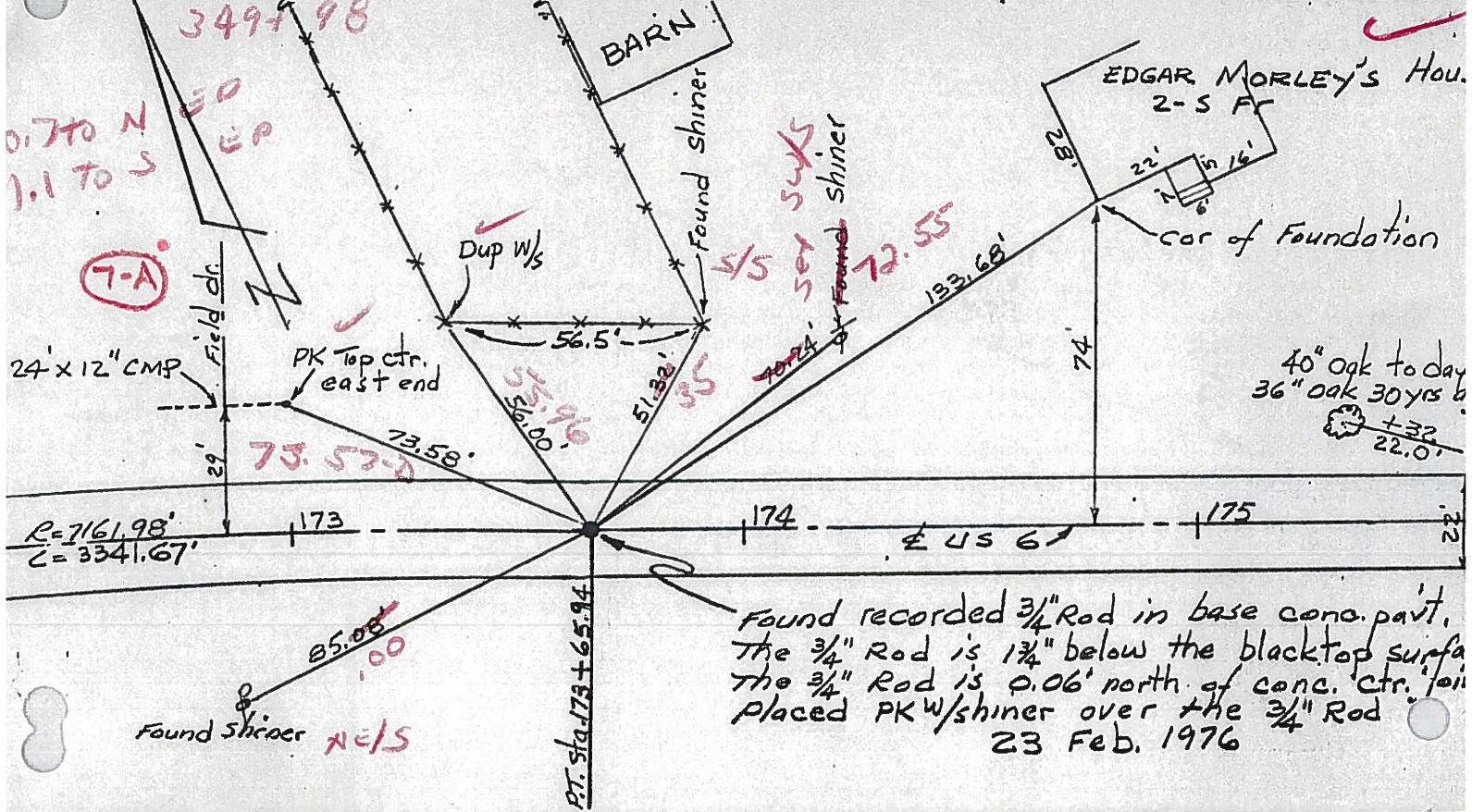
7-C

7-D

Red Beach  
111 E 1073

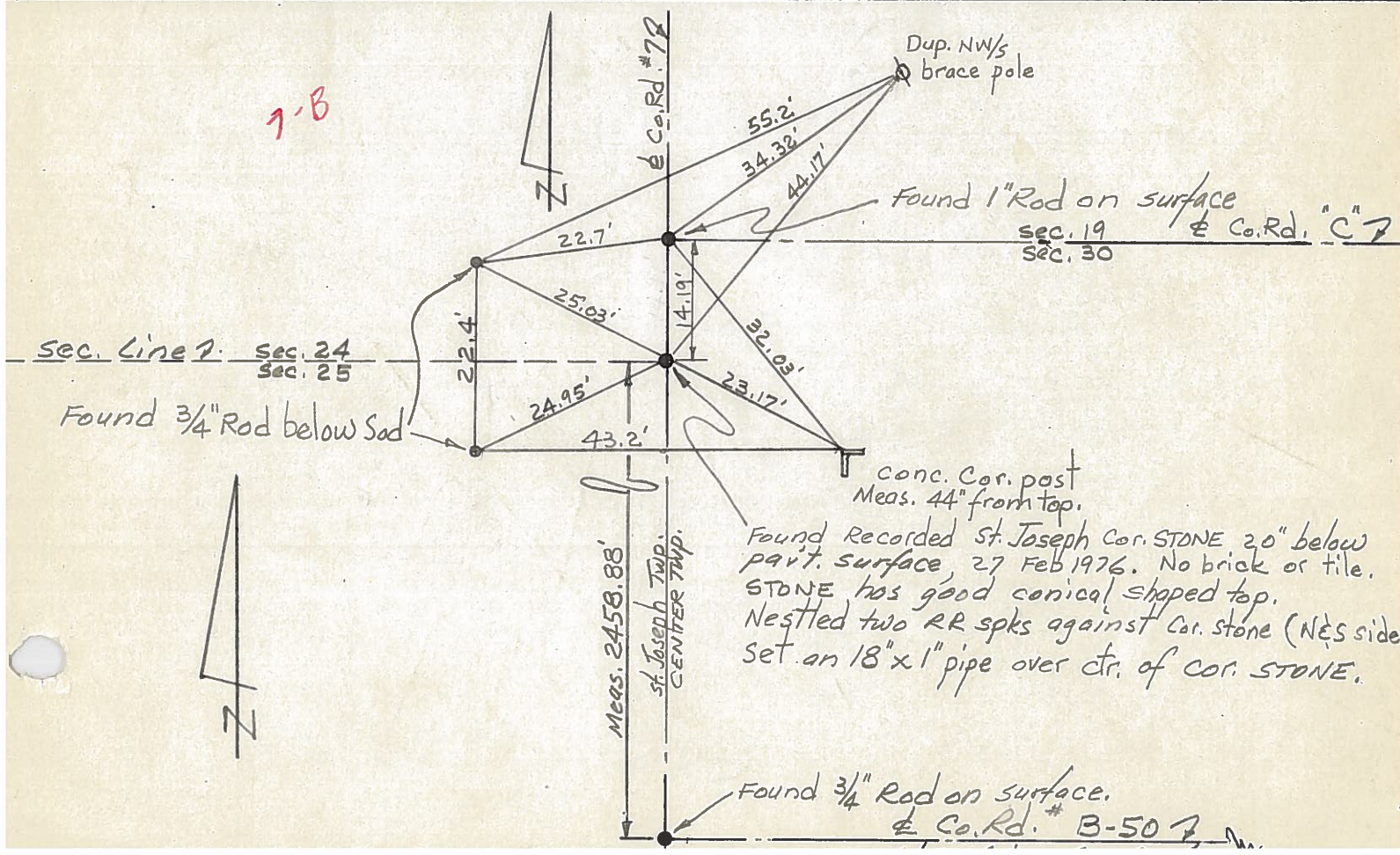
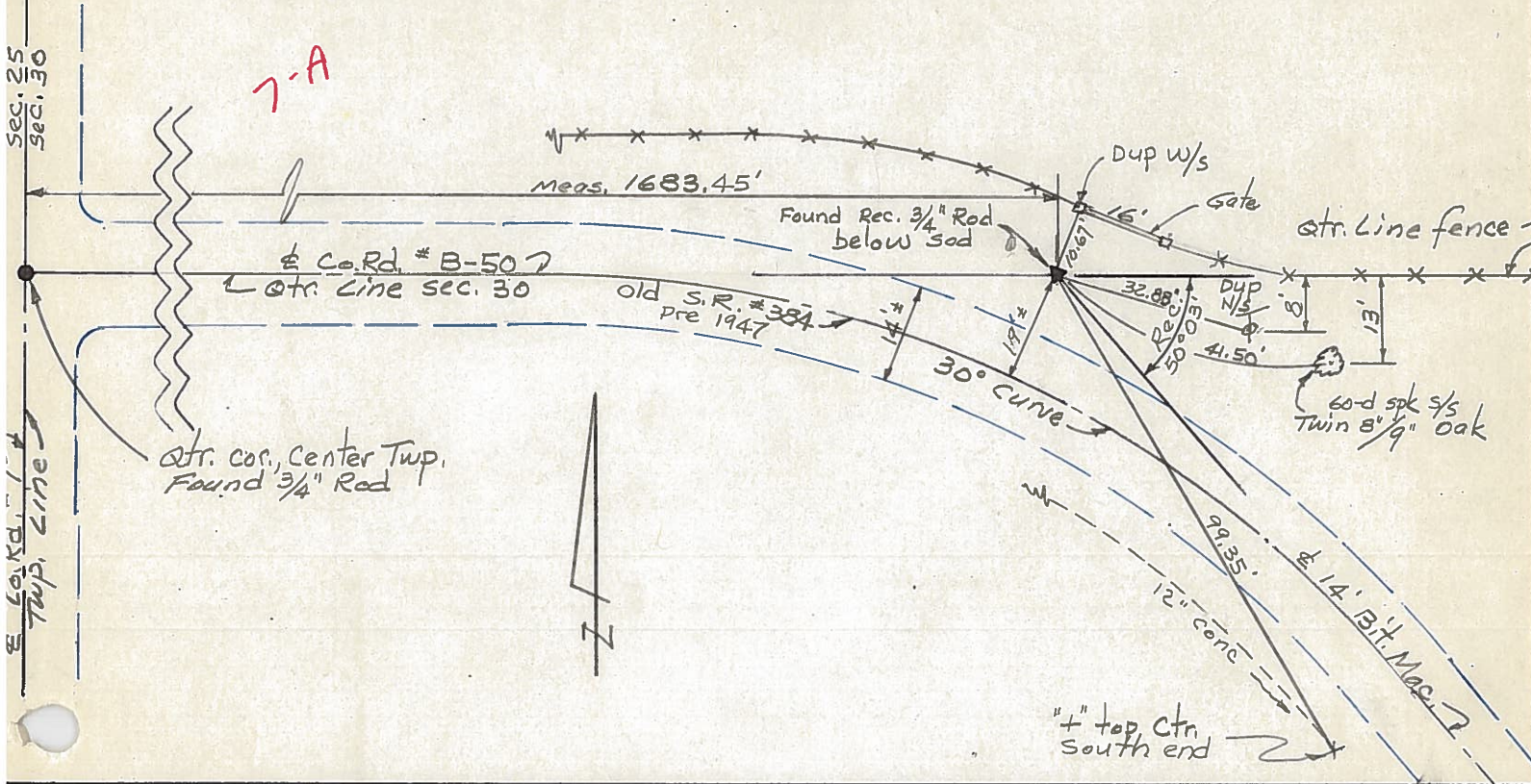
S. TR. US 6 WEATHER \_\_\_\_\_  
 SEC. 25 St Joseph Twp TEMP. \_\_\_\_\_  
30 CENTER TWP

DESCRIPTION CONTROL POINTS JOB NO. \_\_\_\_\_



PERSONNEL	TITLE	PERSONNEL	TITLE	COUNTY	DATE
Red Beach				Williams	Feb-Mar. 1976
W. Knape				S. R. US 6	WEATHER
				SEC. 30 CENTER TWP.	TEMP.

DESCRIPTION CONTROL POINTS JOB NO. \_\_\_\_\_



PERSONNEL	TITLE	PERSONNEL	TITLE	COUNTY	DATE	WEATHER	TEMP.
Louys				Wi.	9/4/58	Fair.	75°
Wise				S. R. 6			
Krahn				Edgerton E. Corp Line			
Pessefall				SEC. Ta INT x N. RT #2			

DESCRIPTION Witnesses to Control Points. JOB NO. \_\_\_\_\_

9.  
7-A P.T. - sta. 173+65.94  
3/4" Iron Rod

8  
P.I. - sta. 157+26.1  
 $\Delta = 26^\circ - 44' RT.$   
No Record.

7  
P.C. - sta. 140+24.27  
3/4" Iron Rod

6-A P.O.T. - sta. 129+28.65  
No Record.

P.O.T. - sta. 116+09.4  
No Record.

P.O.T. - sta. 102+89.23  
No Record.

6  
P.I. - sta. 89+69.31  
 $\Delta = 0^\circ - 22' Lt.$   
3/4" Sq. Iron Rod

5-A  
P.I. - sta. 63+21.50  
 $\Delta = 0^\circ - 02' Lt.$   
3/4" Iron Rod

