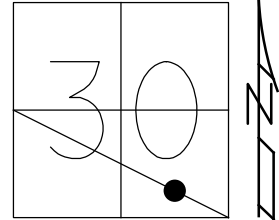


O.D.O.T. DISTRICT 2 SURVEY OFFICE (USE ONLY)

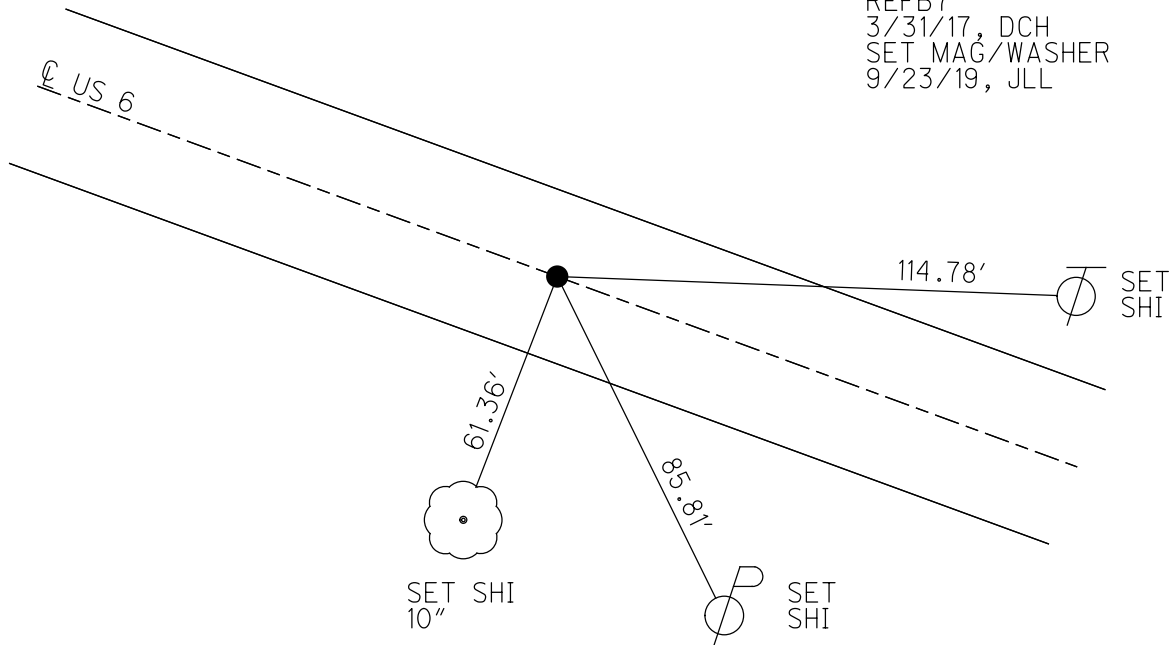
PERSONNEL _____ REFERENCE NO. 7 B SHEET 18 OF 41
 NOTES RHOADES DATE 7/19/18 ROUTE US 6
 H.C. O'DONNELL WEATHER CLOUDY COUNTY WILLIAMS
 R.C. HAGEMeyer TEMP. 82° TOWNSHIP CENTER
 TRENKA SECTION 30
 DWG BY NIESE PID 102827 T 6 N R 2 E

TYPE MONUMENT P.K.SHANK
 ON SURFACE - ~~BELOW~~ ON
 OFFSET Q PAVEMENT 0.2' ~~LT~~ : RT
12.2' TO LT EDGE PAVEMENT
 STATION: 354+55.65



HORIZ.DATUM: NAD83 2011 GEOID: NAVD88 2012A
 GRID: NORTHING: 655583.833 EASTING: 1371281.452

RECORD: P.I.
 STA.178+29.75
 $\Delta = 0^{\circ} 27' LT$
 FD P.K./WASHER
 5/3/00, MRC
 SET P.K./WASHER
 8/1/00, MRC
 FD P.K.SHANK
 REFB7
 3/31/17, DCH
 SET MAG/WASHER
 9/23/19, JLL



O.D.O.T. DISTRICT 2 SURVEY OFFICE

PERSONNEL

REFERENCE NO. 7-B

SHEET 21 OF 32

NOTES CANTERBURY

H.C. MOSEK

DATE 5-3-00

ROUTE US 6

R.C. BARNHISEL

WEATHER FAIR

COUNTY Williams

TEMP. +68°

TOWNSHIP CENTER

SECTION 30

T6NRZE

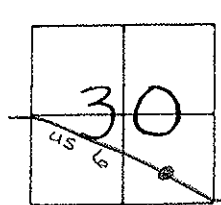
TYPE MONUMENT PK/WASHER

ON SURFACE - BELOW YES

LEFT - & PAV'T. - RIGHT 0.2'

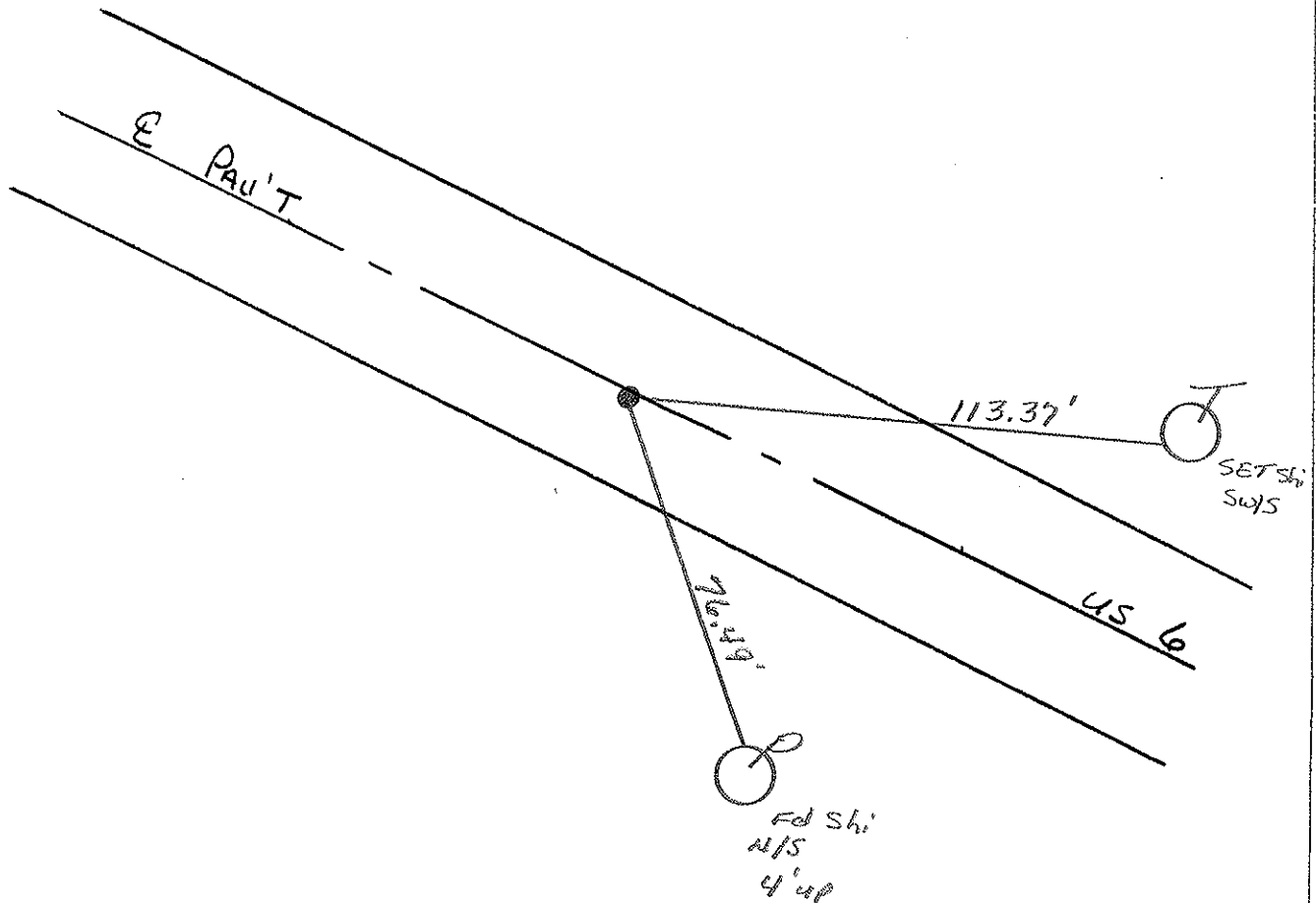
12.2' TO LT EDGE PAVEMENT

S.L.M. 354+67



RECORD PI = STA: 178+29.75
 $\Delta = 0^{\circ} - 27' \text{ LT}$

RESET PK/WASHER
 8-1-00
 M.R.C.



O.D.O.T. DISTRICT 2 SURVEY OFFICE

PERSONNEL

REFERENCE NO. 19

SHEET 19 OF

NOTES LOG HXKE

H.C. REED

R.C. BARNHISEL

Hoffman

DATE 4-12-88

WEATHER CLEAR

TEMP. +60

ROUTE U.S. 6

COUNTY Williams

TOWNSHIP CENTER

SECTION 30

T 6 N R 2 E

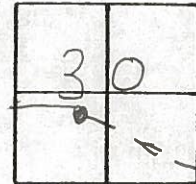
TYPE MONUMENT Sm. P.K. Spike ^{P.K. & WASHER - 6-2-88}

ON SURFACE - BELOW

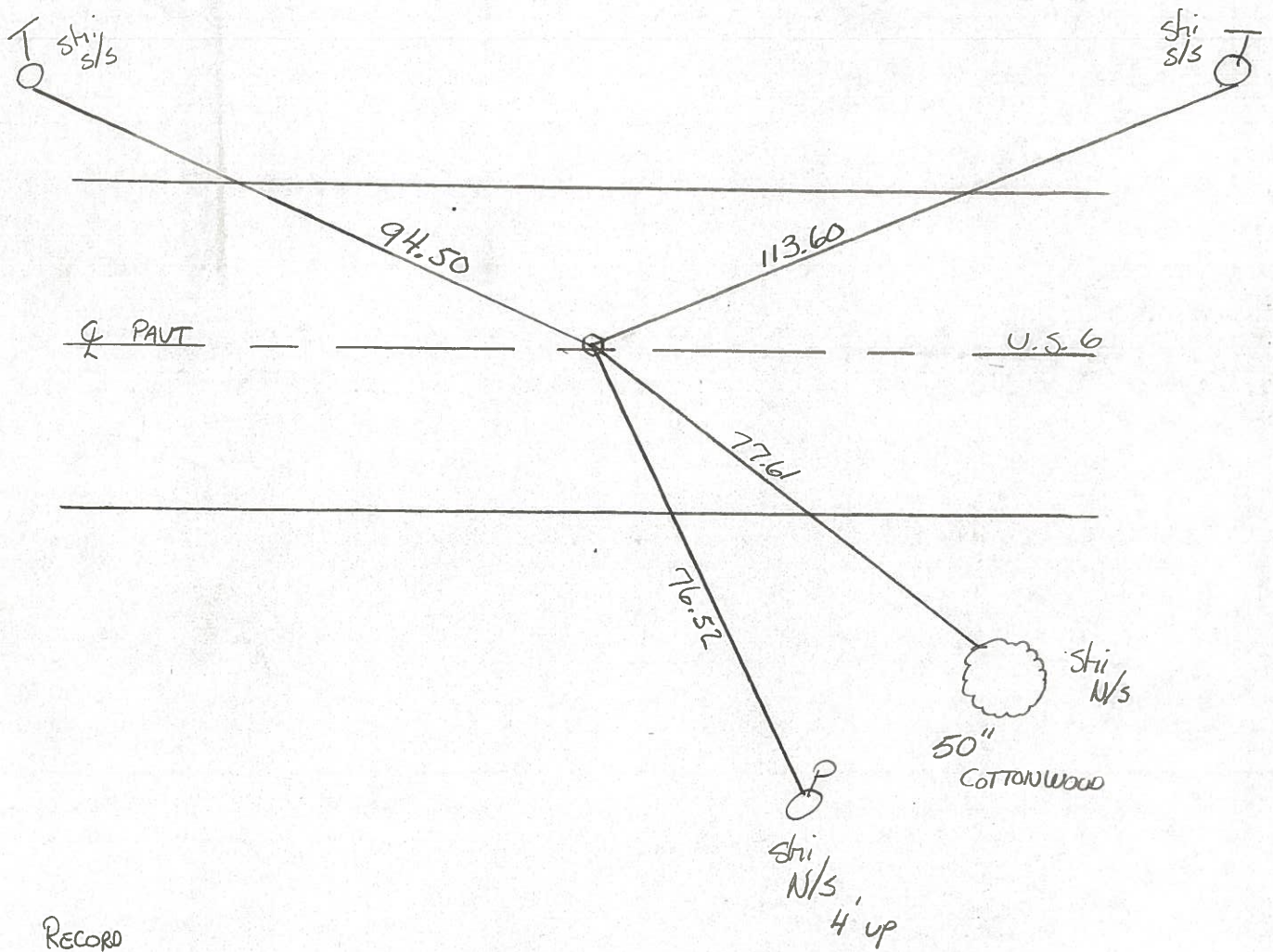
~~LEFT~~ - PAV'T. - RIGHT 0.3

11.7 TO L+ EDGE PAVEMENT

S.L.M. 354+67



7-B



RECORD

P.I. Sta 178+29.75 / Δ 0°-27' Lt

County Williams S.R. d.s. 6

Date 7-20-81

Township Center

Weather cloudy

Section 30

Temp. +75°

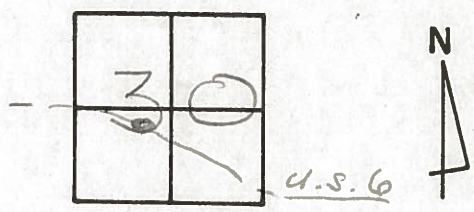
T6N, R2E

Personnel Hoffmaal

Loehrke

Householder

7-B



Fd. P.K. 1" Below Surface

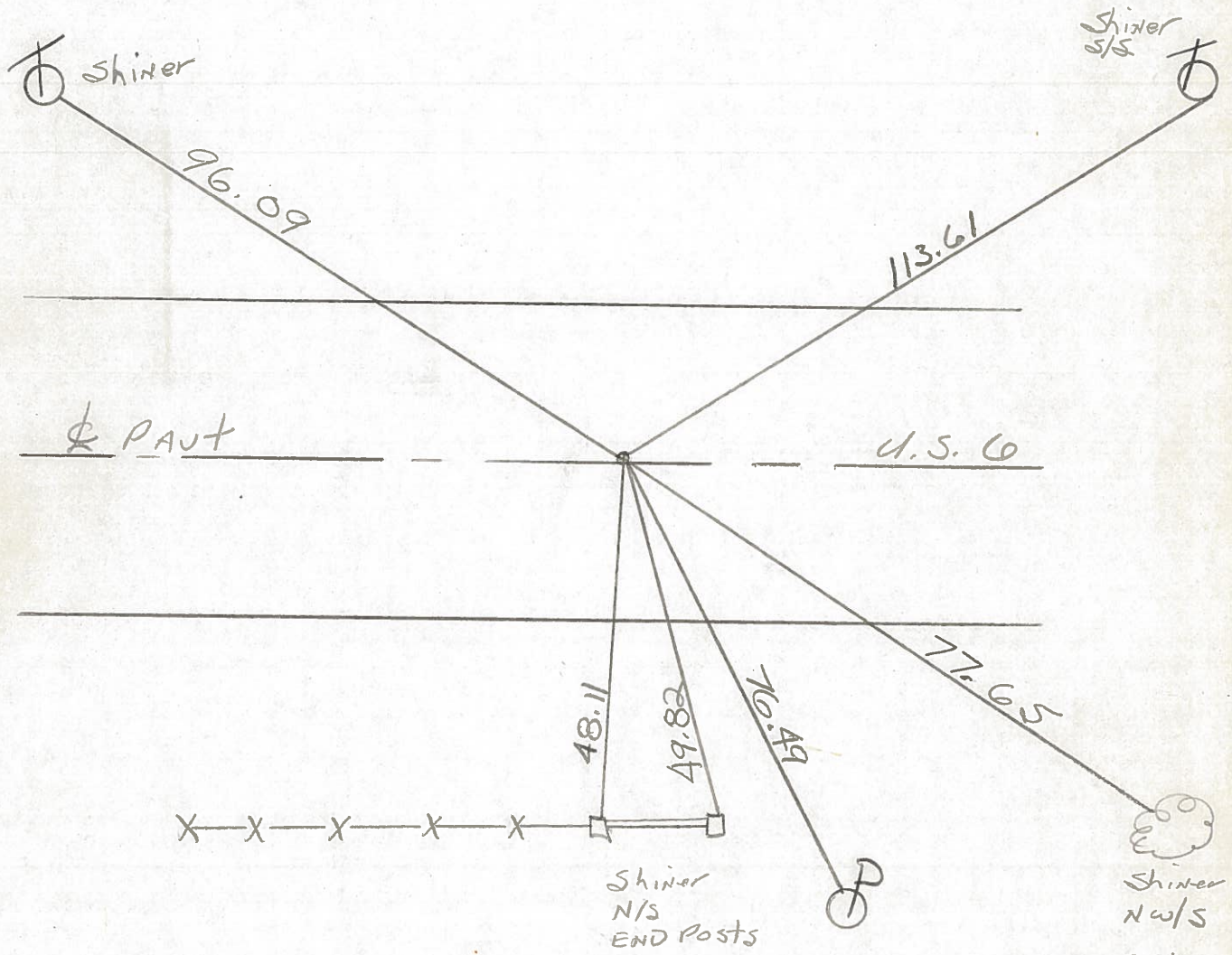
Project STA ± 354+62

11.2' to N. EP.

SET SMALL R.R. SPK.

10.5' to S. EP.

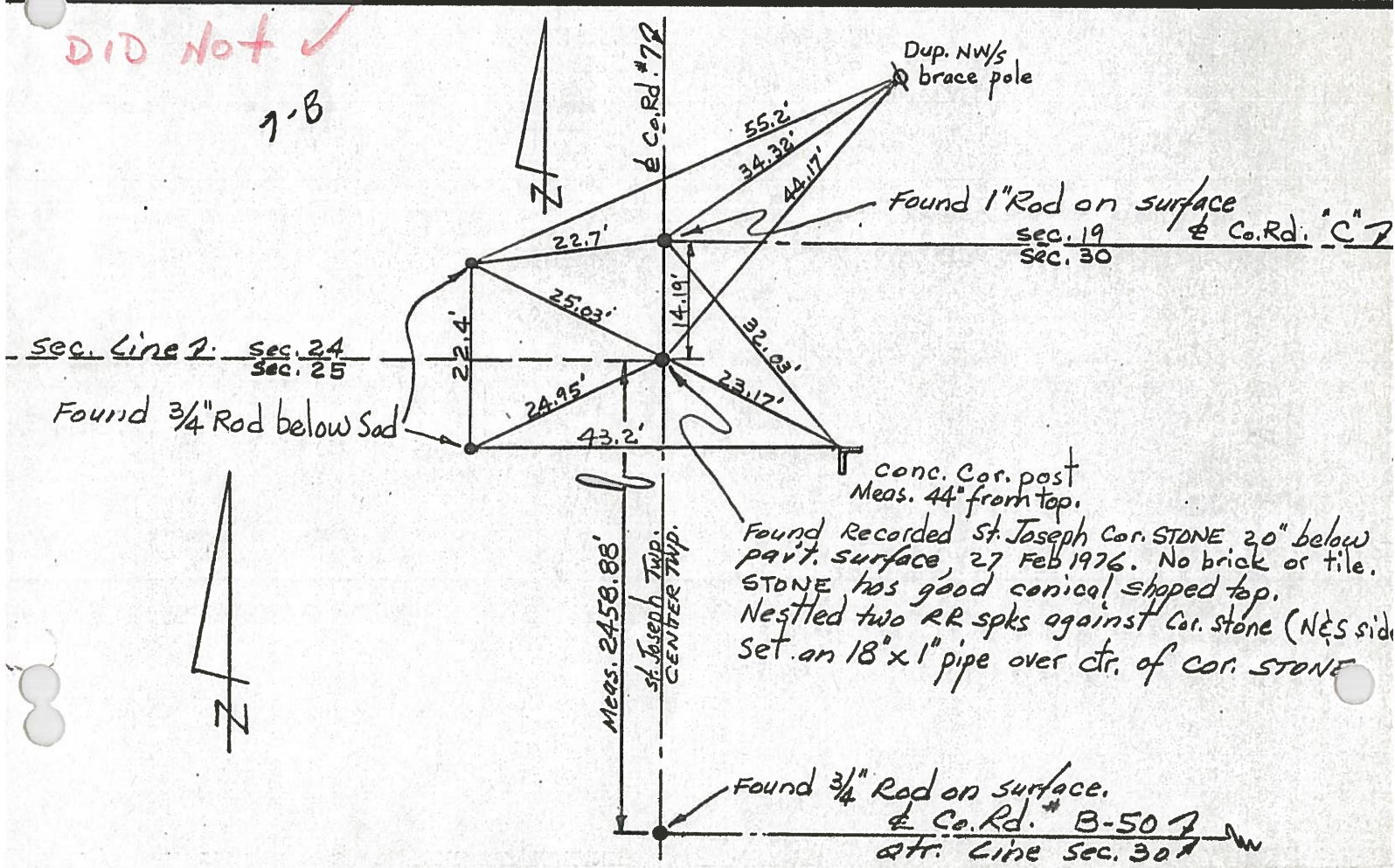
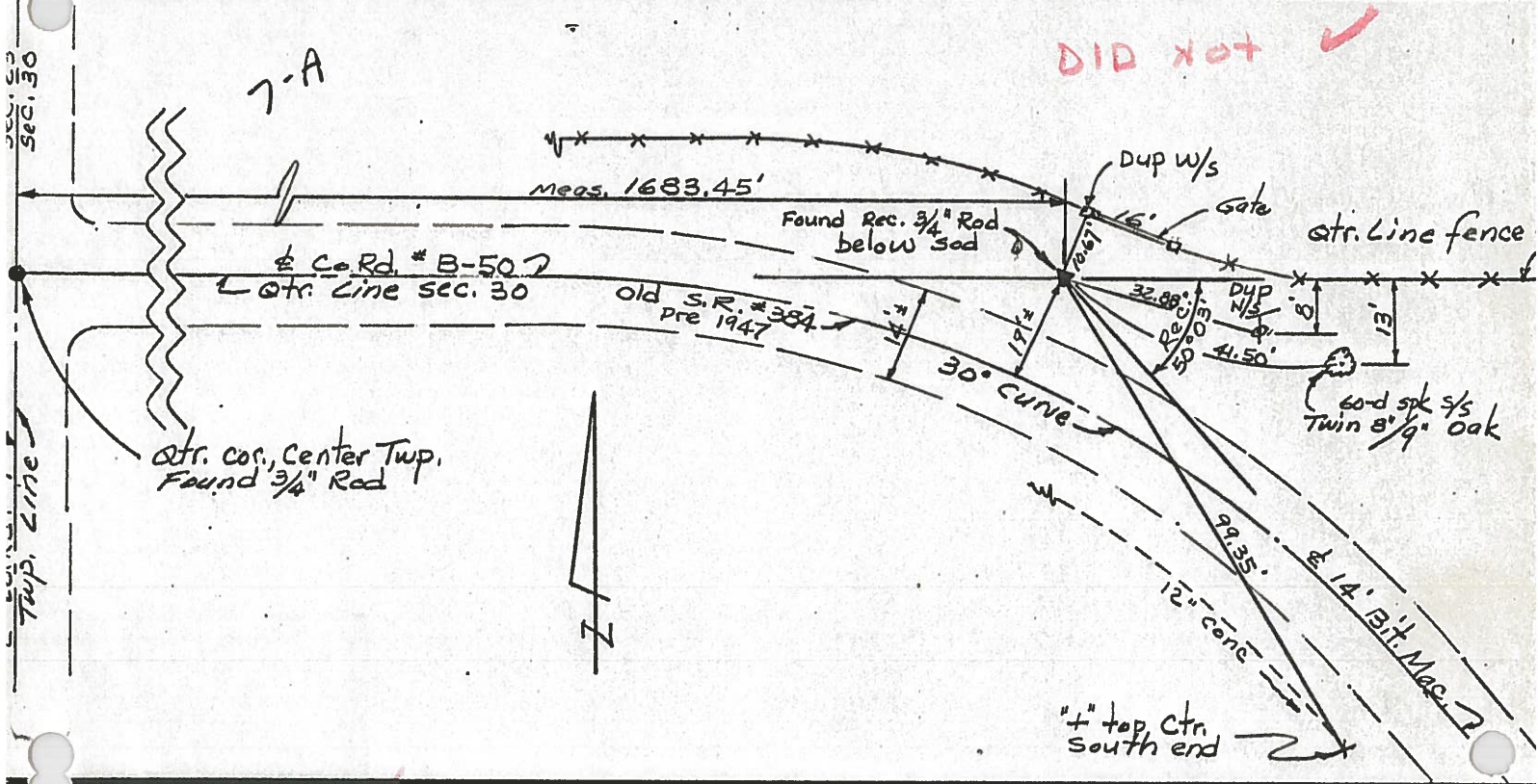
11-6-81 SWH



C.P. Herman Res.

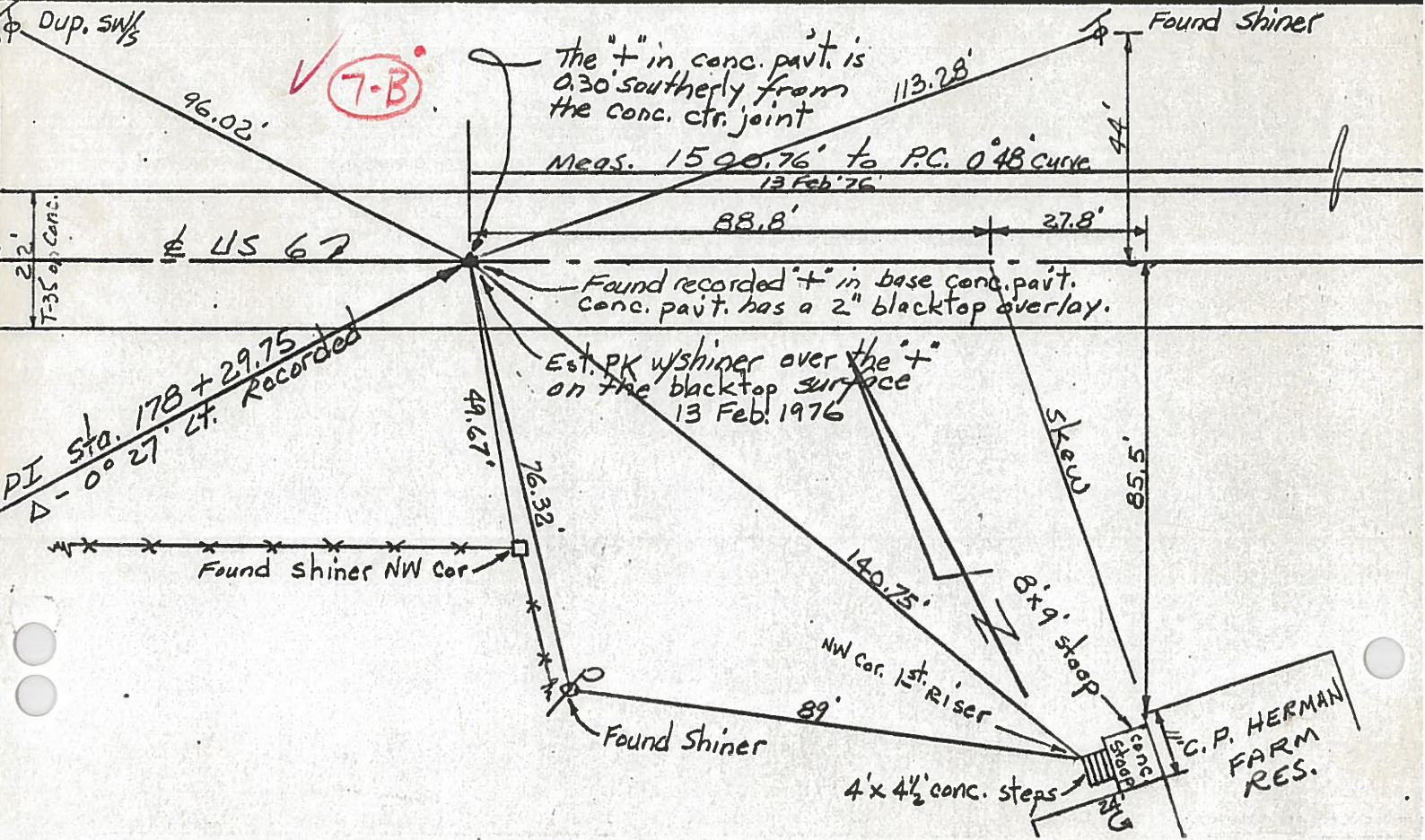
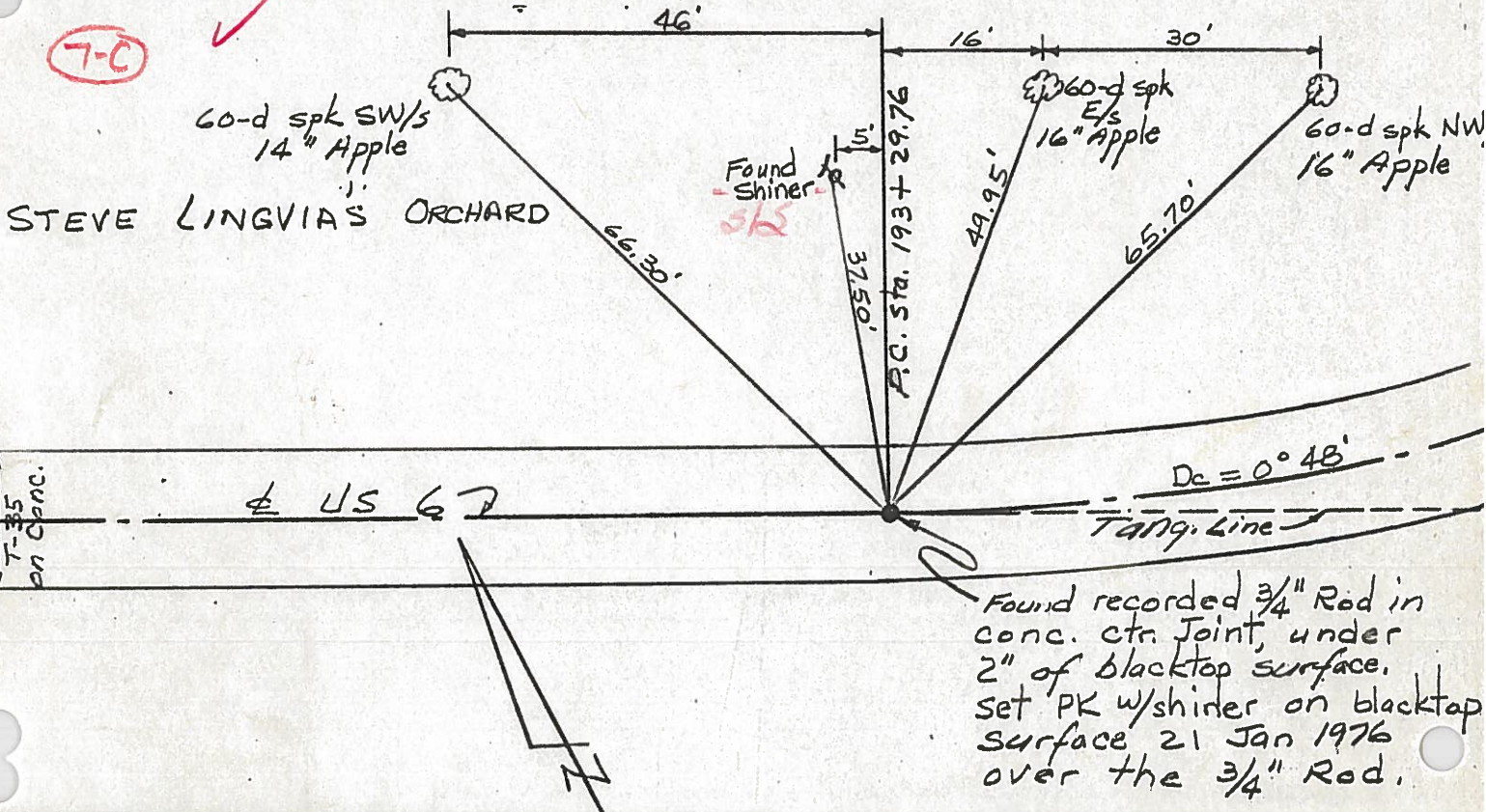
P.I. STA, 178+29.75 ~ Δ = 0°-27'24" ~ REC.

PERSONNEL TITLE PERSONNEL TITLE COUNTY Williams DATE Feb-Mar. 1976
Red Beach _____
W. Knape _____
 S. R. US 6 WEATHER _____
 SEC. 30 CENTER TWP. TEMP. _____
 DESCRIPTION CONTROL POINTS JOB NO. _____



PERSONNEL TITLE PERSONNEL TITLE
 Red Beach
 W. Knape

COUNTY Williams DATE Jan-Feb 1976
 S. R. US 6 WEATHER _____
 SEC. 30 CENTER TWP EMP _____
 DESCRIPTION CONTROL POINTS JOB NO. _____



PERSONNEL TITLE PERSONNEL TITLE

COUNTY Wi.

DATE 9/4/58

Louys

Wise

Krahn

Pessefall

S. R. 6

WEATHER

FAIR

Edgerton E. Corp Lim.

SEC. To INT. IN RT. #2 TEMP. 75°

DESCRIPTION

Witnesses to Control Points

JOB NO.

LEFT

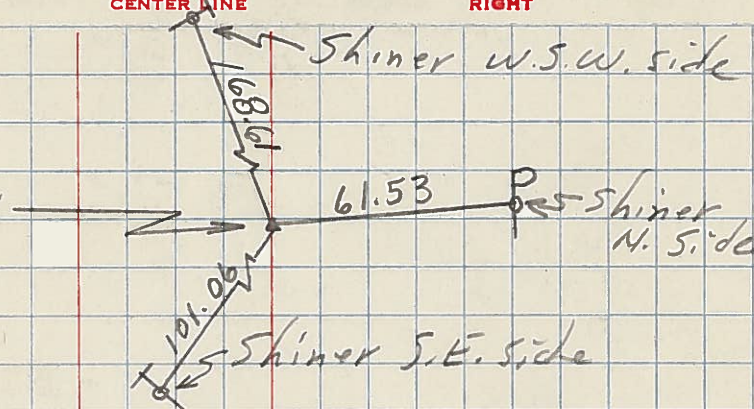
CENTER LINE

RIGHT

8-D

14

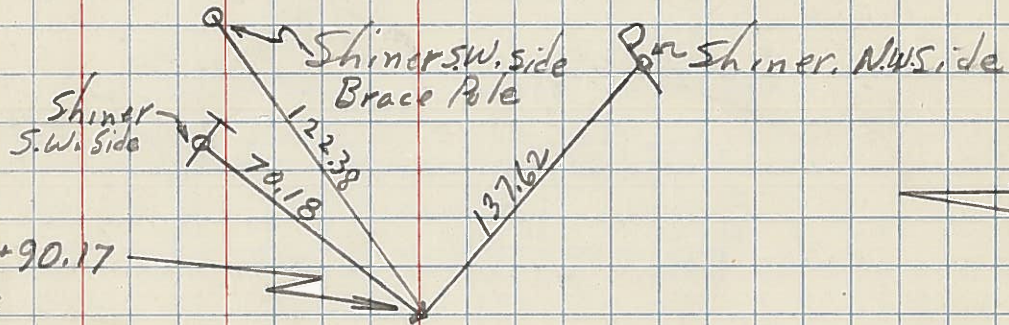
P.O.T. - sta. 229+77.45
X - in Pav't.



8-B

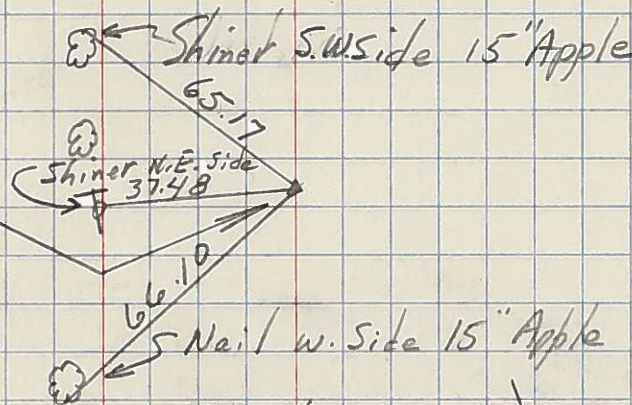
13

P.T. - sta. 220+90.17
X - in Pav't.



12

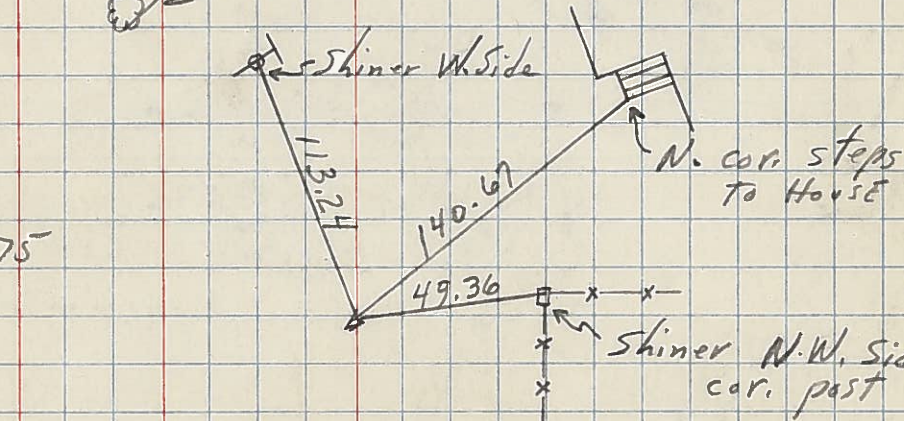
P.I. - sta. 207+27.31
 $\Delta = 22^\circ 05' LT$
No Record.



11

P.C. - sta. 193+29.76
 $\frac{3}{4}$ " Iron Rod

7-C



7-B

10

P.I. - sta. 178+29.75
 $0^\circ - 27' LT$
X in Pav't.

