

O.D.O.T. DISTRICT 2 SURVEY OFFICE (USE ONLY)

PERSONNEL

REFERENCE NO. 7 C

SHEET 19 OF 41

NOTES RHOADES

DATE 7/19/18

ROUTE US 6

H.C. O'DONNELL

WEATHER CLOUDY

COUNTY WILLIAMS

R.C. HAGEMeyer

TEMP. 82°

TOWNSHIP CENTER

TRENKA

SECTION 30

DWG BY NIESE PID 102827

T 6 N R 2 E

TYPE MONUMENT D.N.F. P.K./WASHER

ON SURFACE - ~~BELOW~~ ON

OFFSET Q PAVEMENT ON LT : RT

12.5' TO RT EDGE PAVEMENT

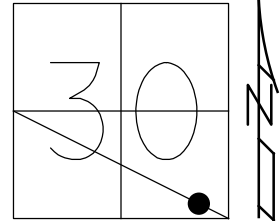
STATION: 369+51.69

HORIZ.DATUM: NAD83 2011

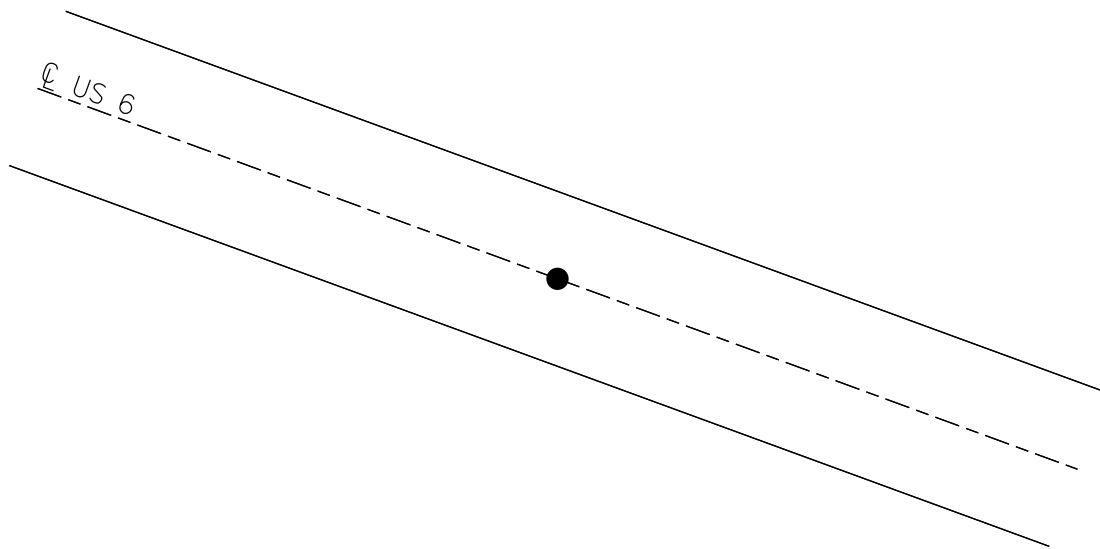
GEOID: NAVD88 2012A

GRID: NORTHING: 654951.100

EASTING: 1372714.454



RECORD: P.C.
STA 193+29.76
SET P.K./WASHER
8/2/00, MRC
D.N.F.
7/19/18, JFO
CALC.POINT
STA. 369+51.69
N : 654951.100
E : 1372714.454



O.D.O.T. DISTRICT 2 SURVEY OFFICE

PERSONNEL

REFERENCE NO. 7-C

SHEET 22 OF 32

NOTES CANTERBURY

H.C. MOSEK

DATE 5-3-00

ROUTE us 6

R.C. BARNHISEL

WEATHER FAIR

COUNTY WILLIAMS

TEMP. +68°

TOWNSHIP CENTER

SECTION 30

T 6 N R 2 E

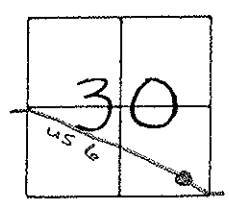
TYPE MONUMENT PK / washer

ON SURFACE - ~~BELOW~~ yes

LEFT - & PAU'T. - RIGHT yes

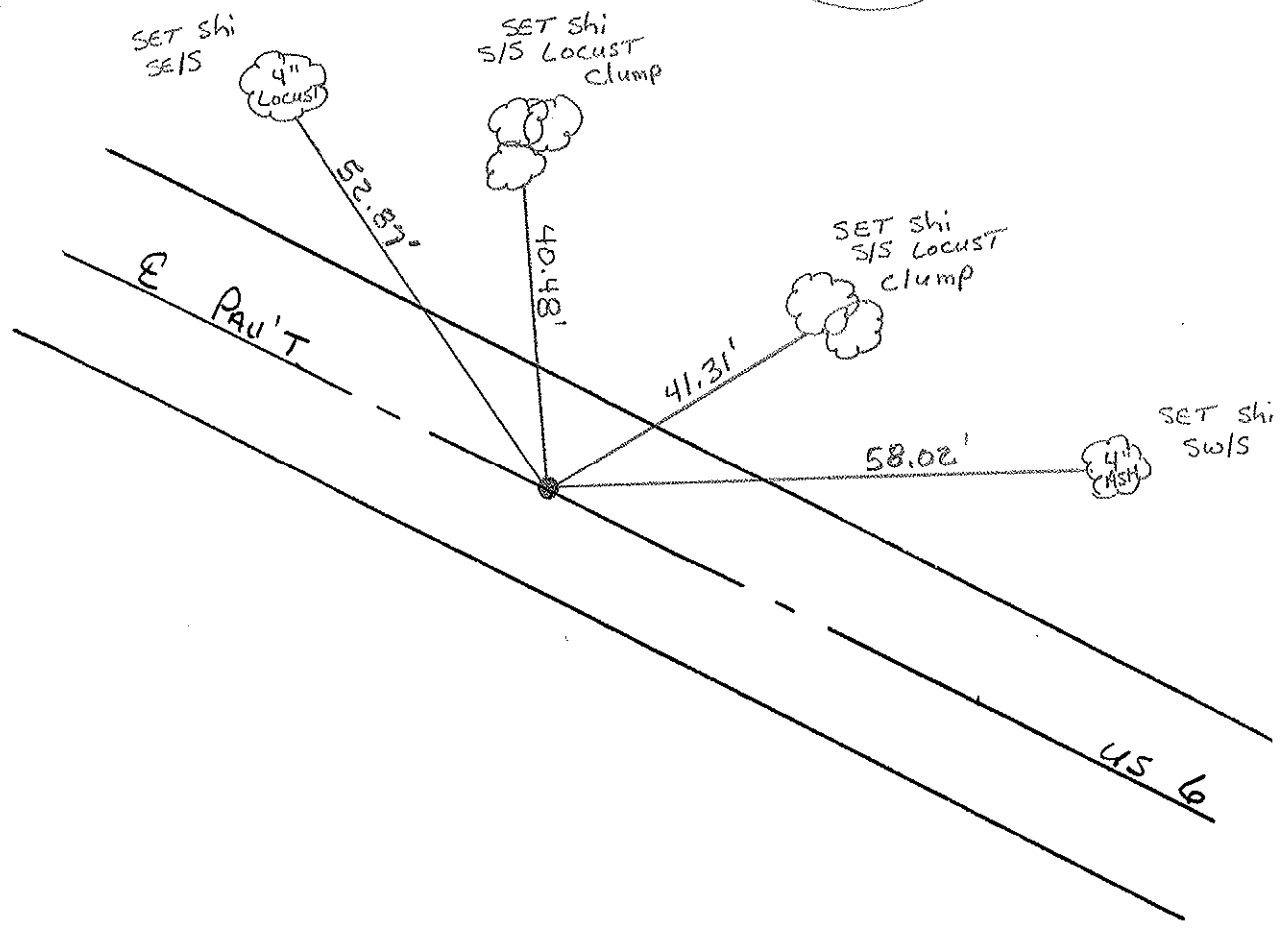
12.5' TO RT. EDGE PAVEMENT

S.L.M. 369+67



RECORD: PC STA: 193+29.76

RESET PK/WASHER
8-2-00
M.R.C.



O.D.O.T. DISTRICT 2 SURVEY OFFICE

PERSONNEL

REFERENCE NO. 20

SHEET 20 OF

NOTES LOEHRKE

H.C. REED

DATE 4-12-88

ROUTE U.S. 6

R.C. BARNHISEL

WEATHER CLEAR

COUNTY Williams

Hoffman

TEMP. +60

TOWNSHIP CENTER

SECTION 30

T 6 N R 2 E

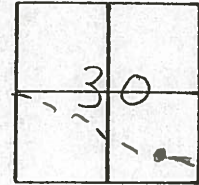
TYPE MONUMENT P.I.K & WASHER 6-2-88
SP. R.R. SPIKE

ON SURFACE - BELOW

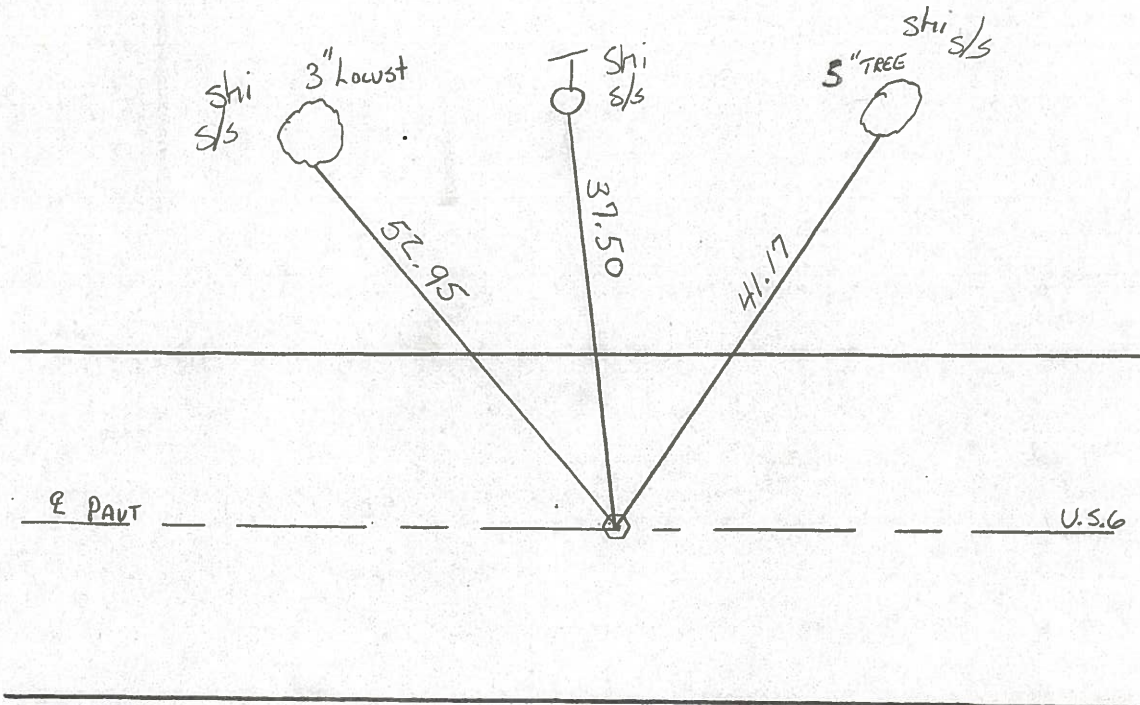
~~LEFT~~ - C PAV'T. - ~~RIGHT~~

10.8 TO Lt EDGE PAVEMENT

S.L.M. 369+67



7-0



Rec

P.C. Sta 193+29.76

County Williams S.R. U.S. 6

Date 7-20-81

Township Center

Weather cloudy

Section 30

Temp. +75°

T6N, R2E

Personnel Hoffman

Loehrke

Householder

7-C

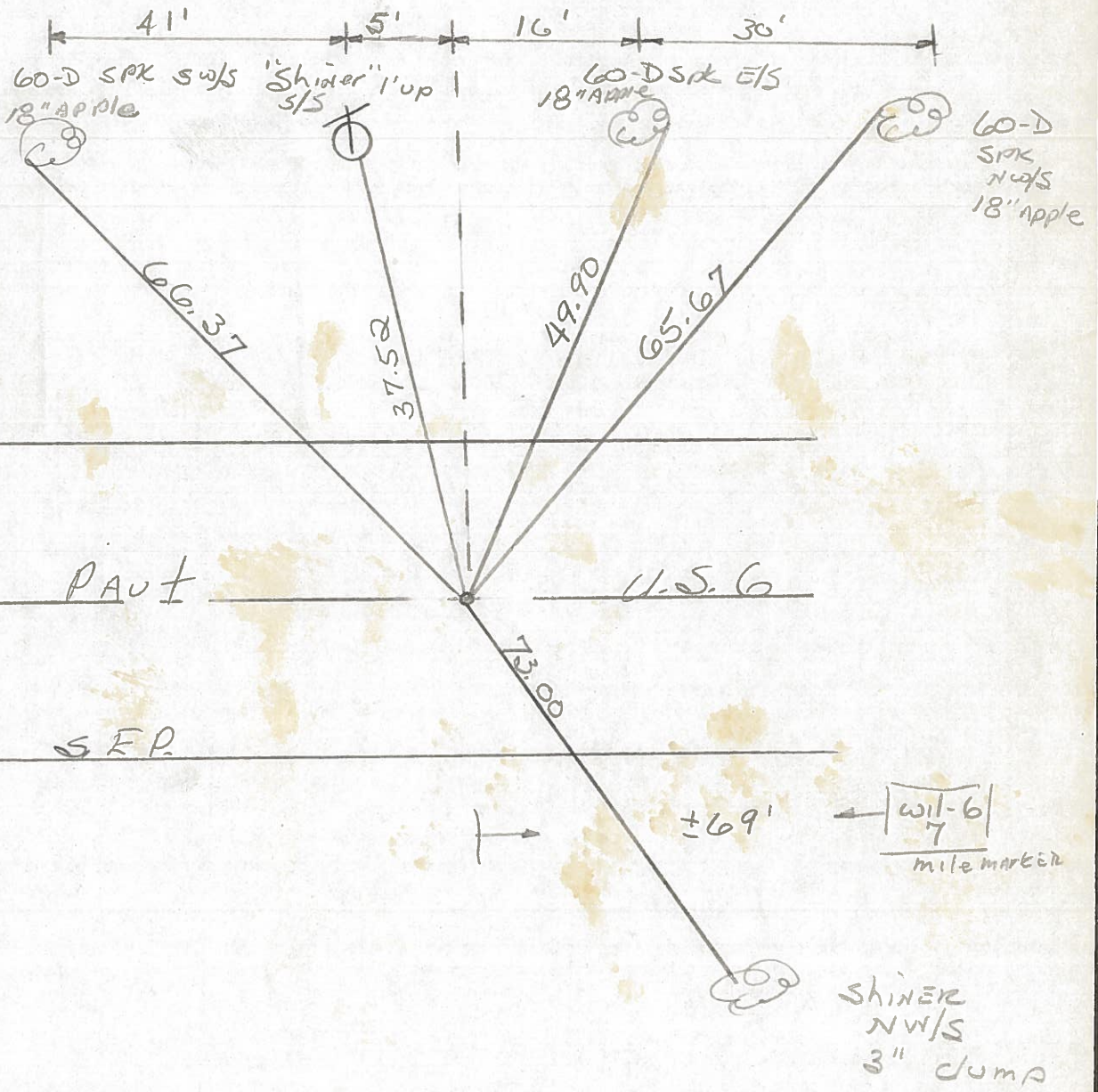


Fd. 3/4" IRON ROD 2" Below Surface PROJECT START 369+62

10.8' to N. EP.

10.8' to S. EP.

SET SMALL
R.R. SPK.
11-6-81
SWH



P.C. STA. 193+29.76 ~ Rec.

PERSONNEL TITLE PERSONNEL TITLE

Red Beach
W. Knappe

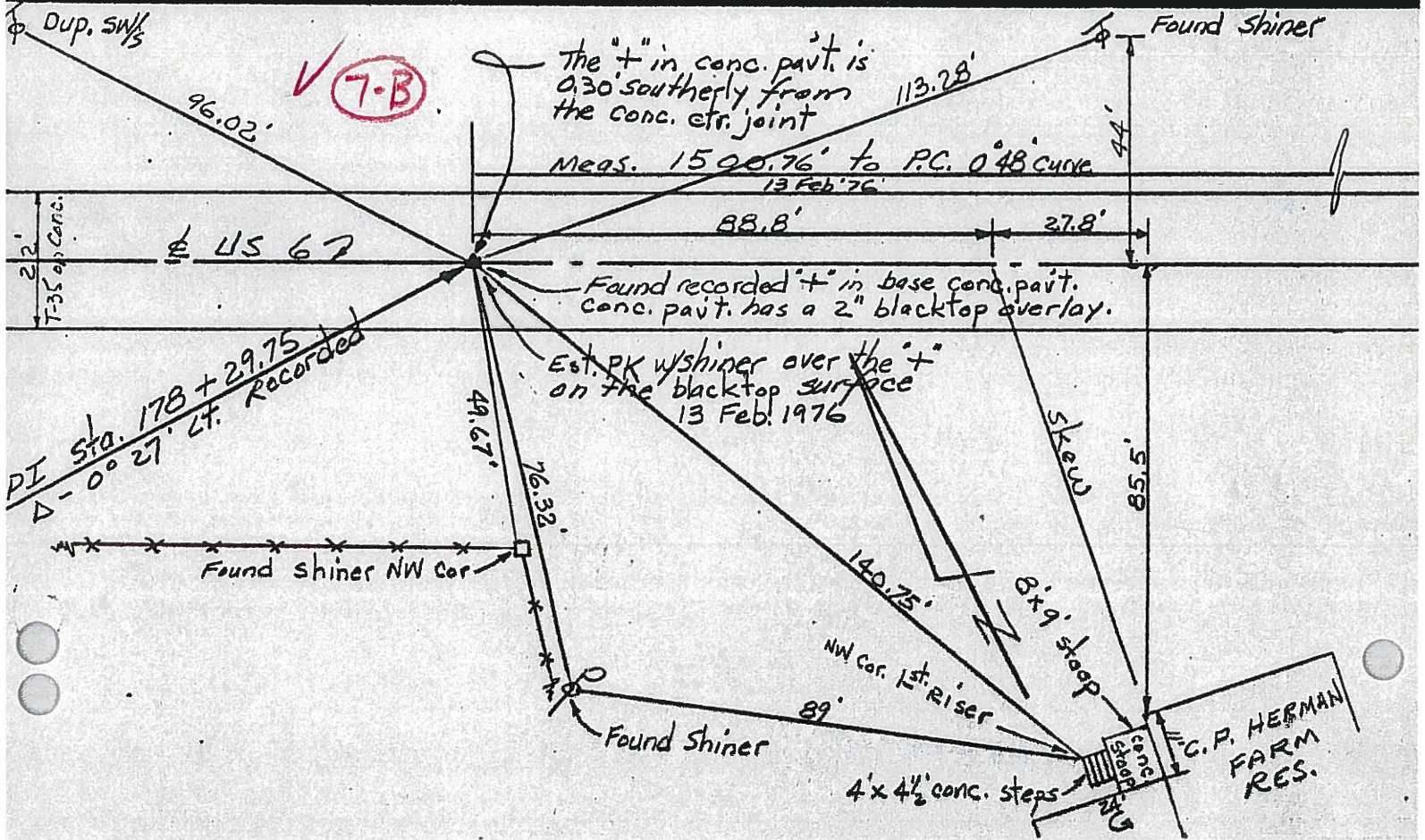
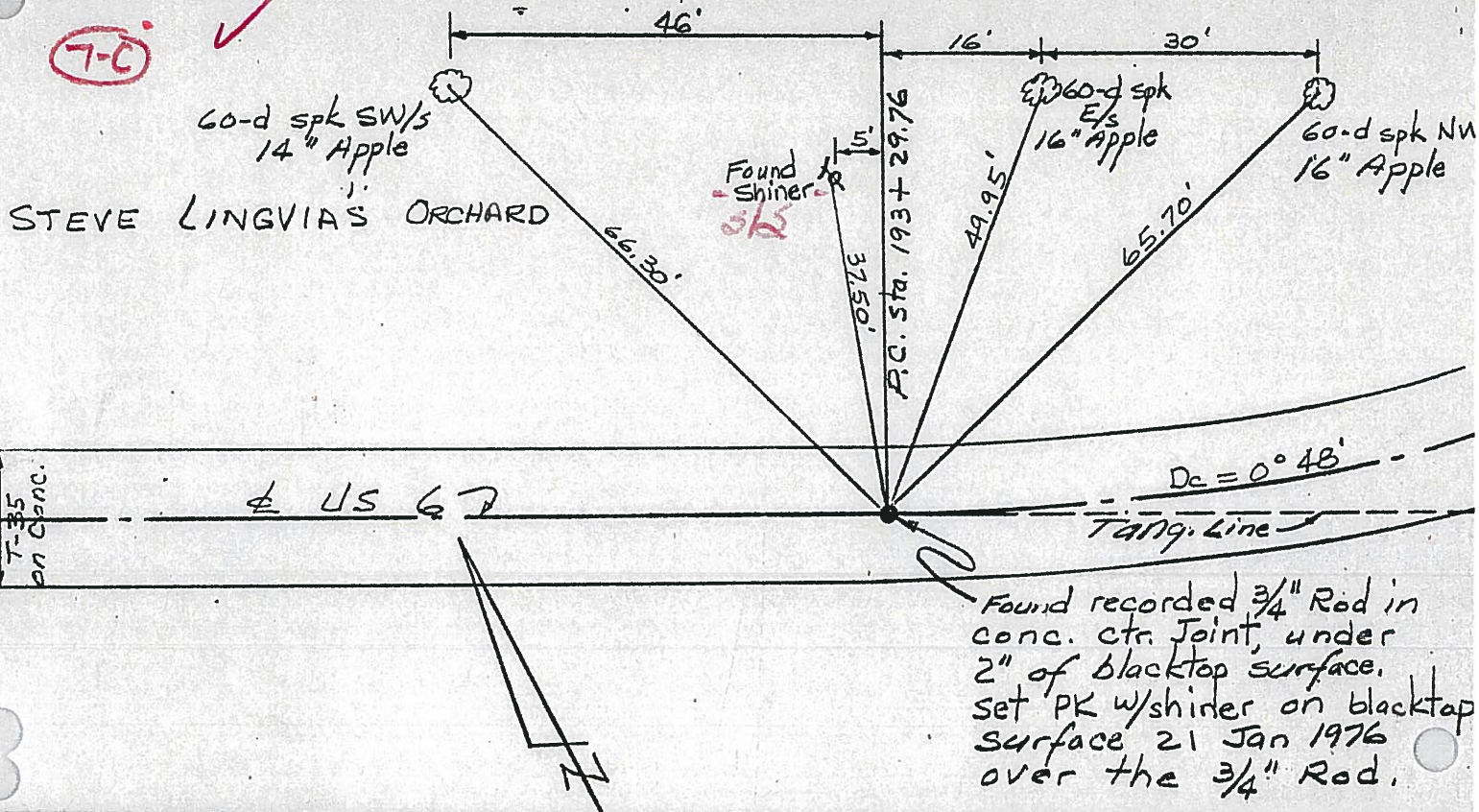
COUNTY Williams DATE Jan-Feb 1977

S. R. US 6 WEATHER

SEC. 30 CENTER TWP EMP

DESCRIPTION CONTROL POINTS JOB NO.

7-C ✓



PERSONNEL TITLE PERSONNEL TITLE

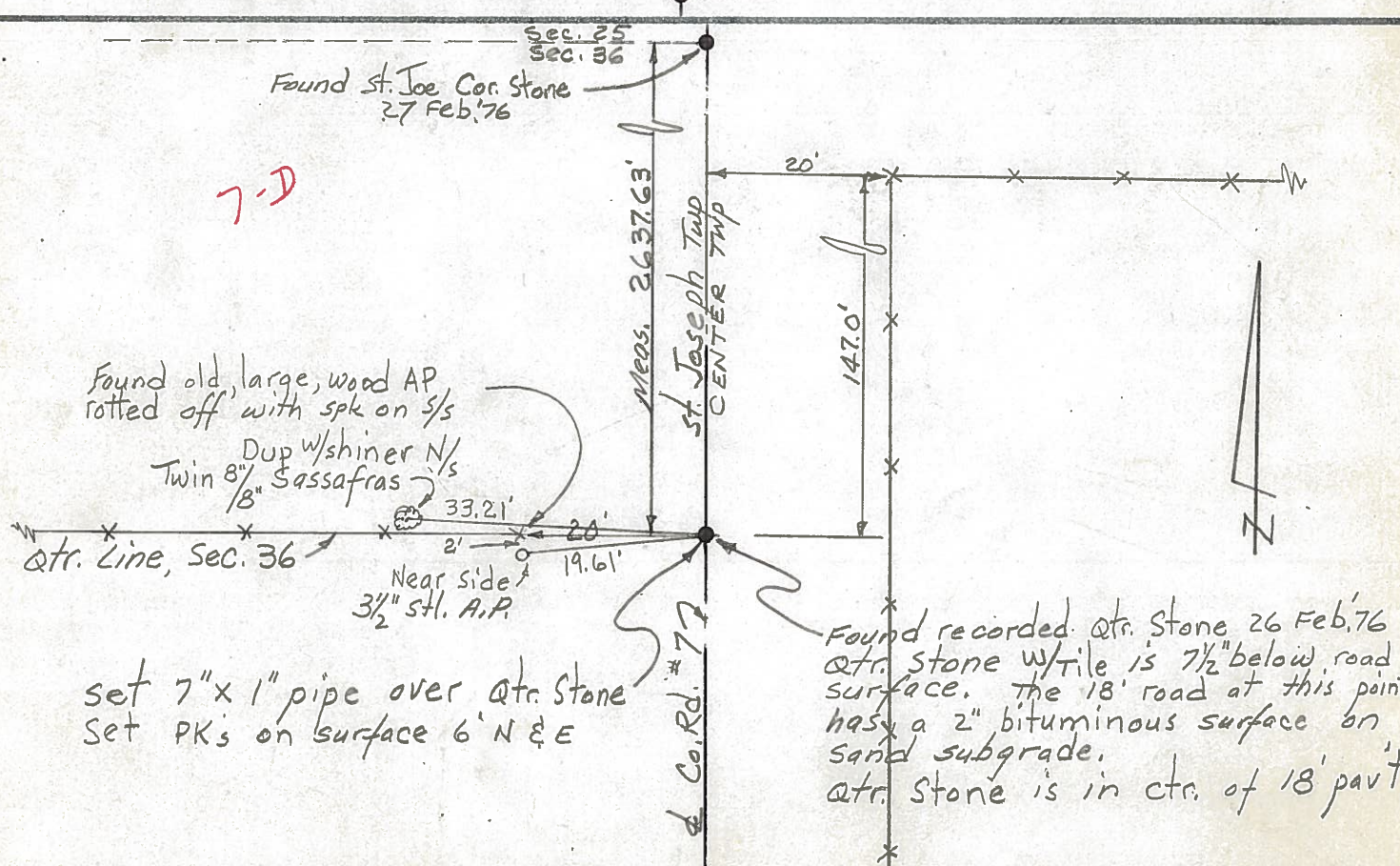
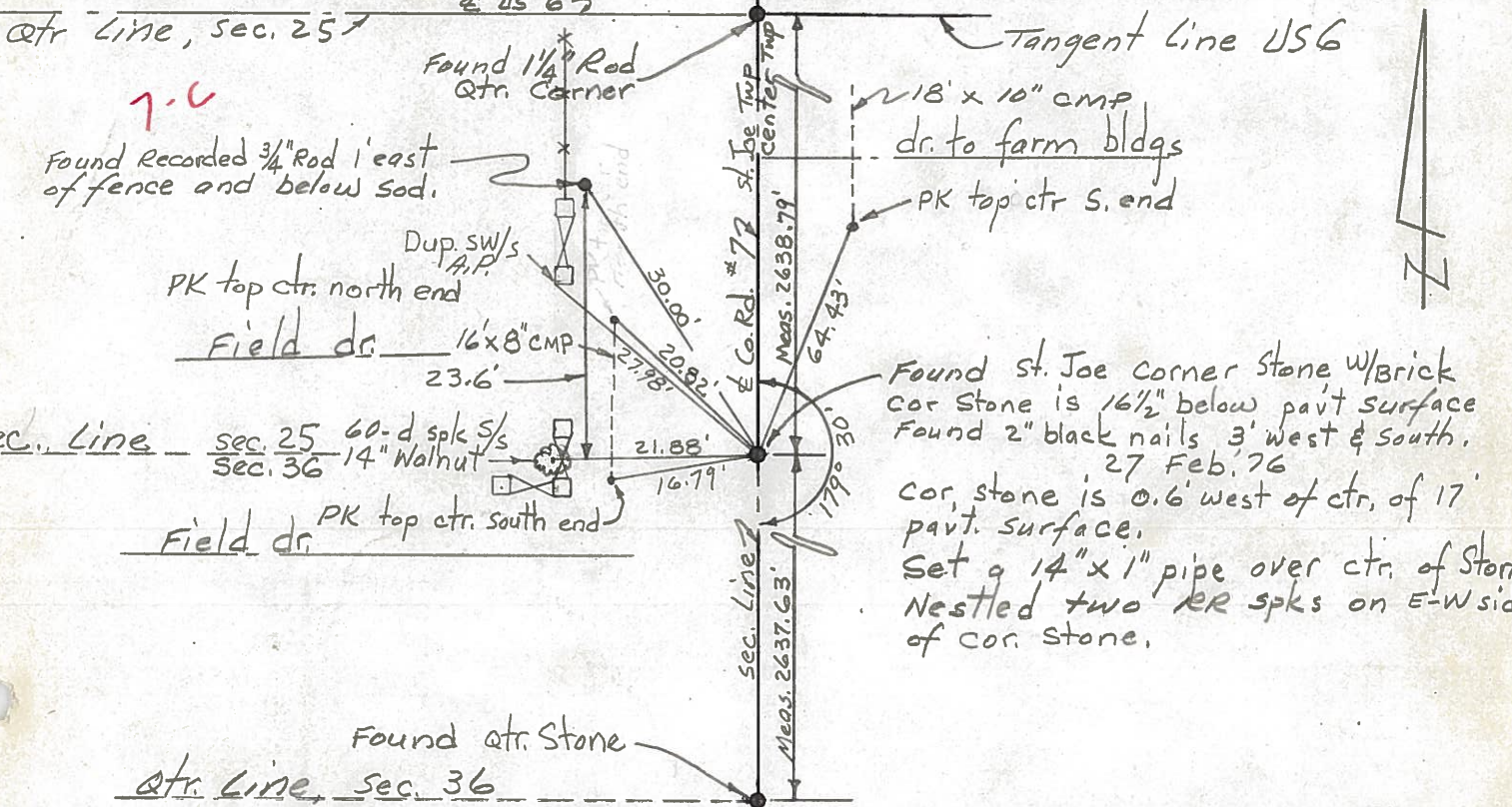
Red Beach
W. Krape

COUNTY Williams DATE 2/27 Feb 76

S. R. US 6 WEATHER

SEC. 25/36 St. Joseph Twp TEMP

DESCRIPTION CONTROLS on Center - St. Joe Rd #7 JOB NO.



PERSONNEL TITLE PERSONNEL TITLE

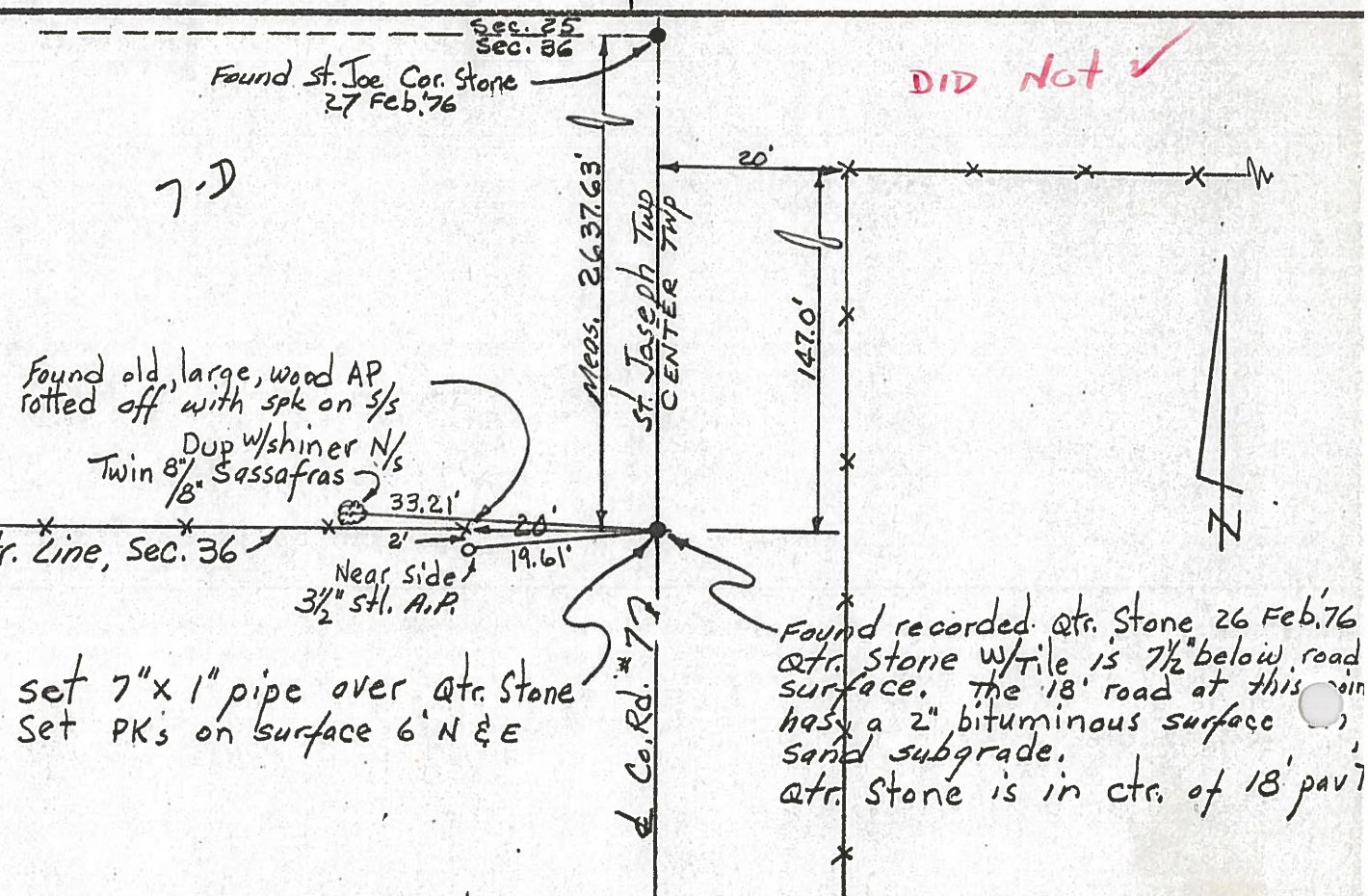
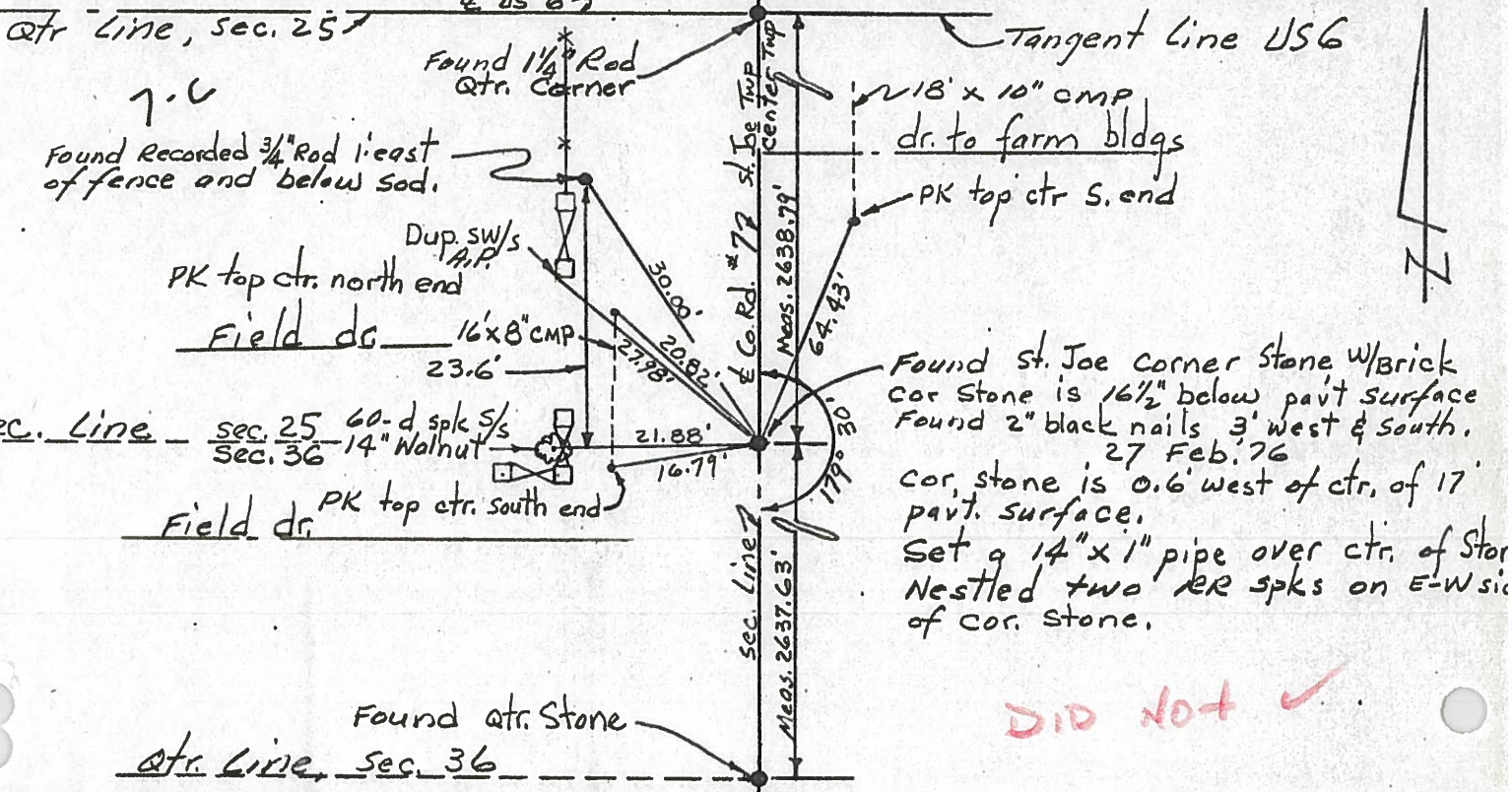
Red Beach
W. Krape

COUNTY Williams DATE 26/27 Feb 76

S. R. US 6 WEATHER

SEC. 25/36 St. Joseph Twp TEMP.

DESCRIPTION CONTROLS on Center - St. Joe Rd #7 JOB NO.

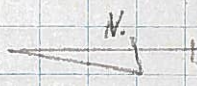
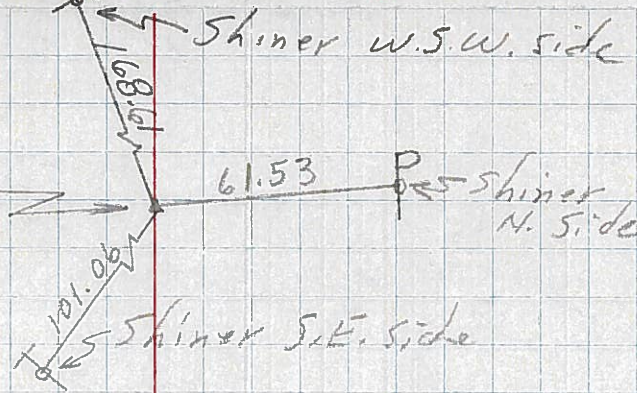


PERSONNEL	TITLE	PERSONNEL	TITLE	COUNTY	DATE	WEATHER	TEMP
Louys				Wi.	9/4/58	FAIR	75°
Wise				S. R. 6			
Krohn				Edgerton E. Corp Lim.			
Pessefall				SEC. to INT. IN. RT. #2			
DESCRIPTION: Witnesses to Control Points							
	LEFT	CENTER LINE	RIGHT	JOB NO. _____			

8-D

14

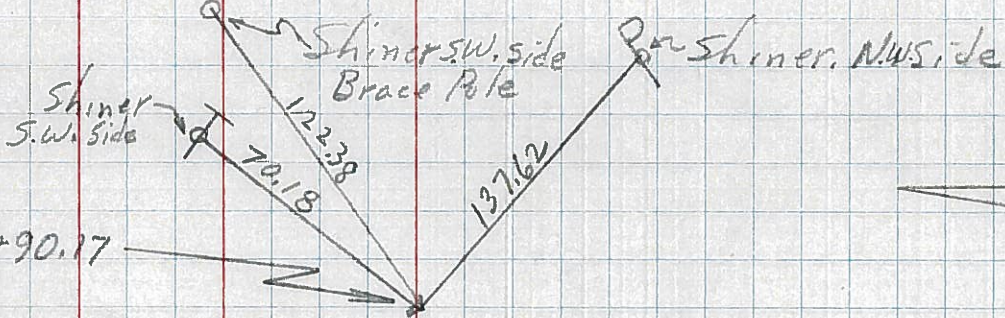
P.O.T. - sta. 229+77.45
X - IN Pav't.



8-B

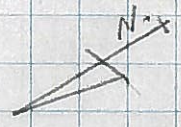
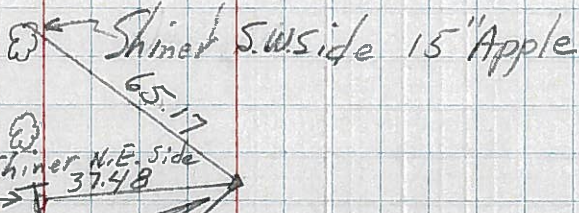
13

P.T. - sta. 220+90.17
X - in Pav't.



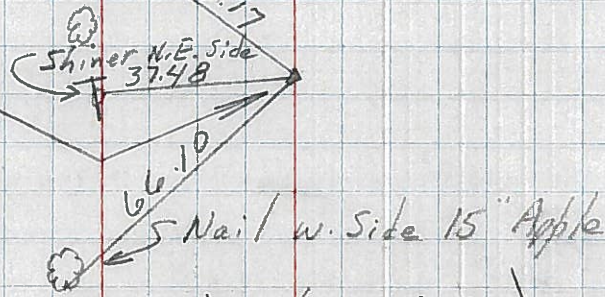
12

P.I. - sta. 207+27.31
Δ = 22°05' LT.
No Record.



11

P.C. - sta. 193+29.76
3/4" Iron Rod



7-C

10

P.I. - sta. 178+29.75
0°-27' LT
X IN Pav't.

