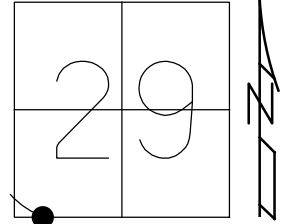


O.D.O.T. DISTRICT 2 SURVEY OFFICE (USE ONLY)

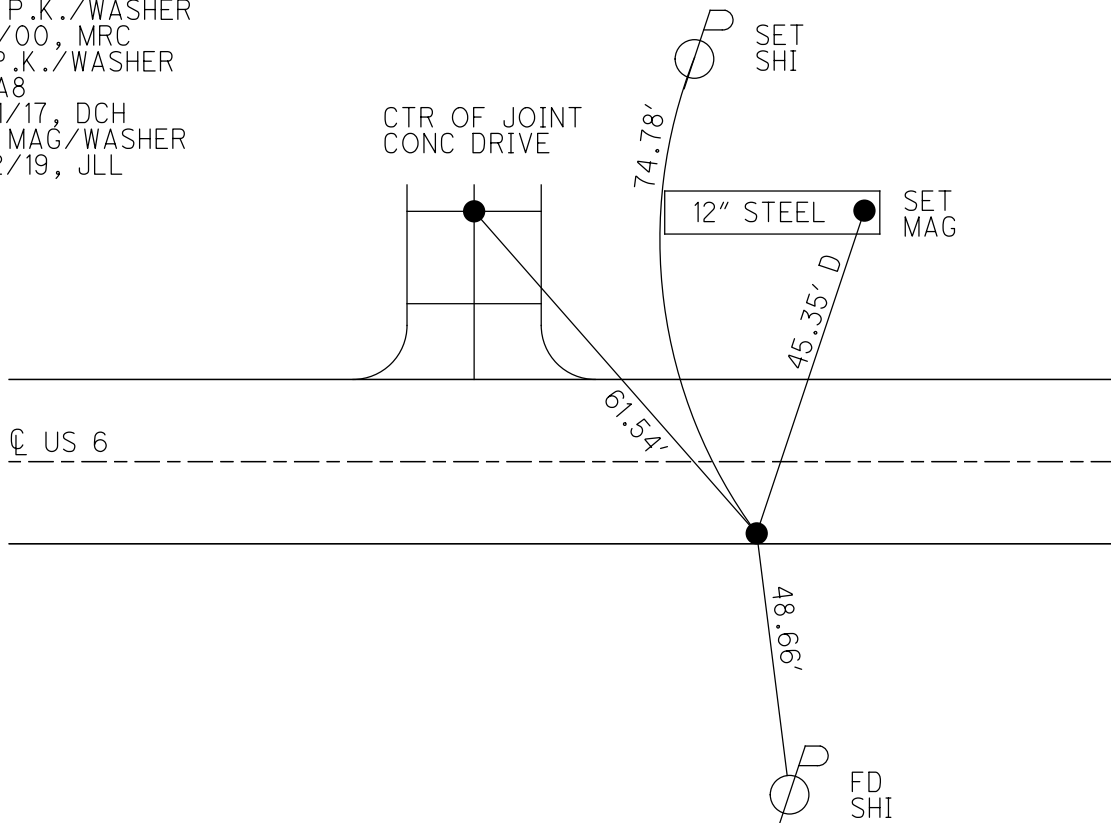
PERSONNEL _____ REFERENCE NO. 8 A SHEET 21 OF 41
 NOTES RHOADES DATE 7/19/18 ROUTE US 6
 H.C. O'DONNELL WEATHER SUNNY COUNTY WILLIAMS
 R.C. HAGEMEYER TEMP. 72° TOWNSHIP CENTER
 _____ TRENKA SECTION 29
 DWG BY NIESE PID 102827 T 6 N R 2 E

TYPE MONUMENT P.K./WASHER
 ON SURFACE - ~~BELOW~~ ON _____
 OFFSET 0.3' \perp PAVEMENT 12.9' \perp : RT
0.3' TO RT EDGE PAVEMENT
 STATION: 392+67.69

HORZ.DATUM: NAD83 2011 GEOID: NAVD88 2012A
 GRID: NORTHING: 654179.429 EASTING: 1374804.335



RECORD:
 FD SM.R.R.SPIKE
 5/5/00, MRC
 SET P.K./WASHER
 8/3/00, MRC
 FD P.K./WASHER
 REFA8
 3/31/17, DCH
 SET MAG/WASHER
 10/2/19, JLL



O.D.O.T. DISTRICT 2 SURVEY OFFICE

PERSONNEL

REFERENCE NO. 8-A

SHEET 24 OF 32

NOTES CANTERBURY

H.C. MOSEK

R.C. BARNHISEL III

DATE 5-5-00

WEATHER cloudy

TEMP. +75°

ROUTE US 6

COUNTY WILLIAMS

TOWNSHIP CENTER

SECTION 29

T. 6 N. R. 2 E.

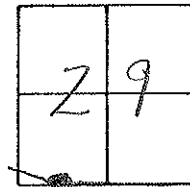
TYPE MONUMENT Sm RR Spk

ON SURFACE - BELOW yes

LEFT - $\frac{0.3}{10}$ OF RT EDGE PAV'T. - RIGHT 12.9'

0.3' RT OF RT EDGE PAVEMENT

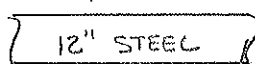
S.L.M. 392+80



Reset PK/washer
8-3-00
M.R.C.

RES.
DRIVE

JOINT OF
CONC. DRIVE
25.6' N. OF
N. Edge PAV'T



Fd "t" E/END

74.46'

43.20'

61.53'

E PAV'T

us 6

48.89'



SET Shi
'N/S

O.D.O.T. DISTRICT 2 SURVEY OFFICE

PERSONNEL

REFERENCE NO. 22

SHEET 22 OF

NOTES LOENKLE

H.C. REED

R.C. BARNHISEL

Hoffman

DATE 4-12-88

WEATHER CLEAR

TEMP. +64

ROUTE U.S. 6

COUNTY Williams

TOWNSHIP CENTER

SECTION 29

T⁴ N R 2 E

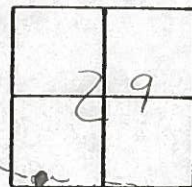
TYPE MONUMENT 3/4" Set Sm P.P. Spike 6-6-88
IRON ROD C.L.

~~ON SURFACE~~ - BELOW 2"

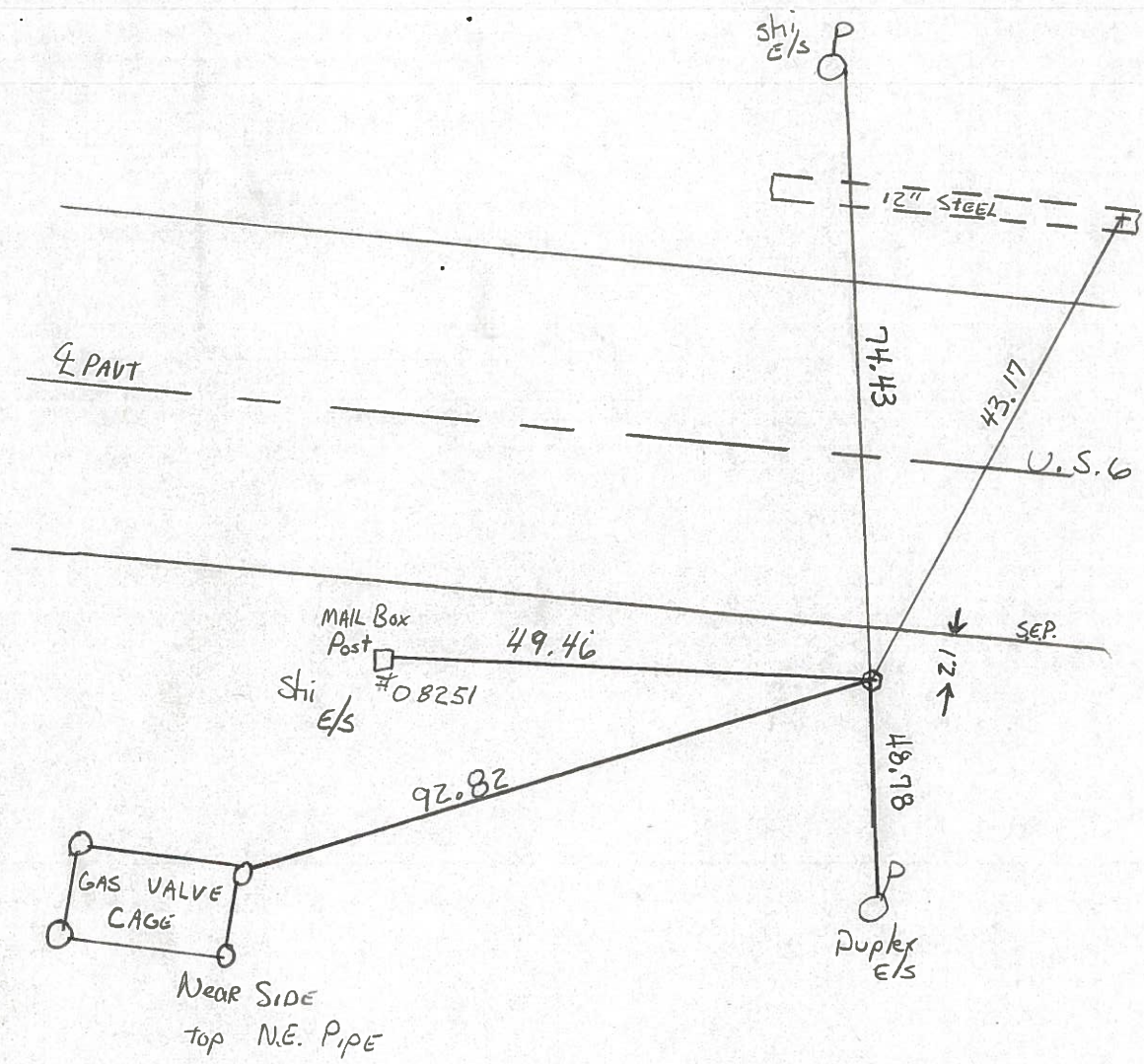
~~LEFT - & PAVT.~~ - RIGHT 11.4

2.1 ~~TO~~ ^{South of} ~~RT~~ EDGE PAVEMENT

S.L.M. 392+80



8-A



County Williams S.R. U.S. 6

Date 7-20-81

Township Center

Weather cloudy

Section 29

Temp. +75°

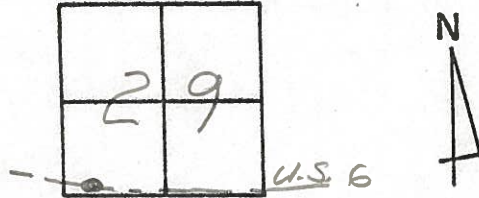
T6N, R2E

Personnel HOFFMAN

Loehrke

Householder

8-A



Fd. 3/4" IRON Rod @ surface of shoulder

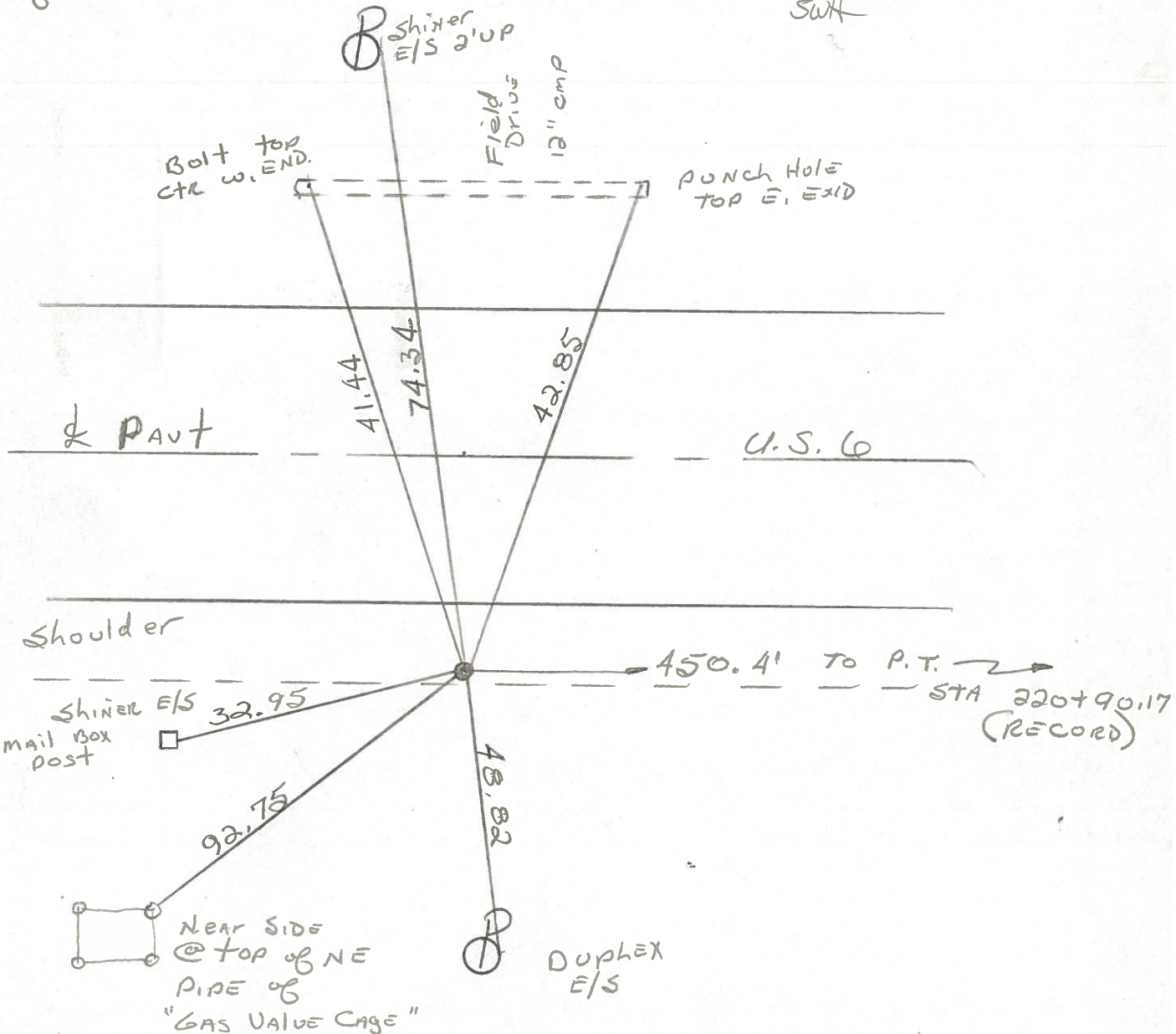
PROJECT STA 392+73

13.4' S. of & PAVT U.S. 6

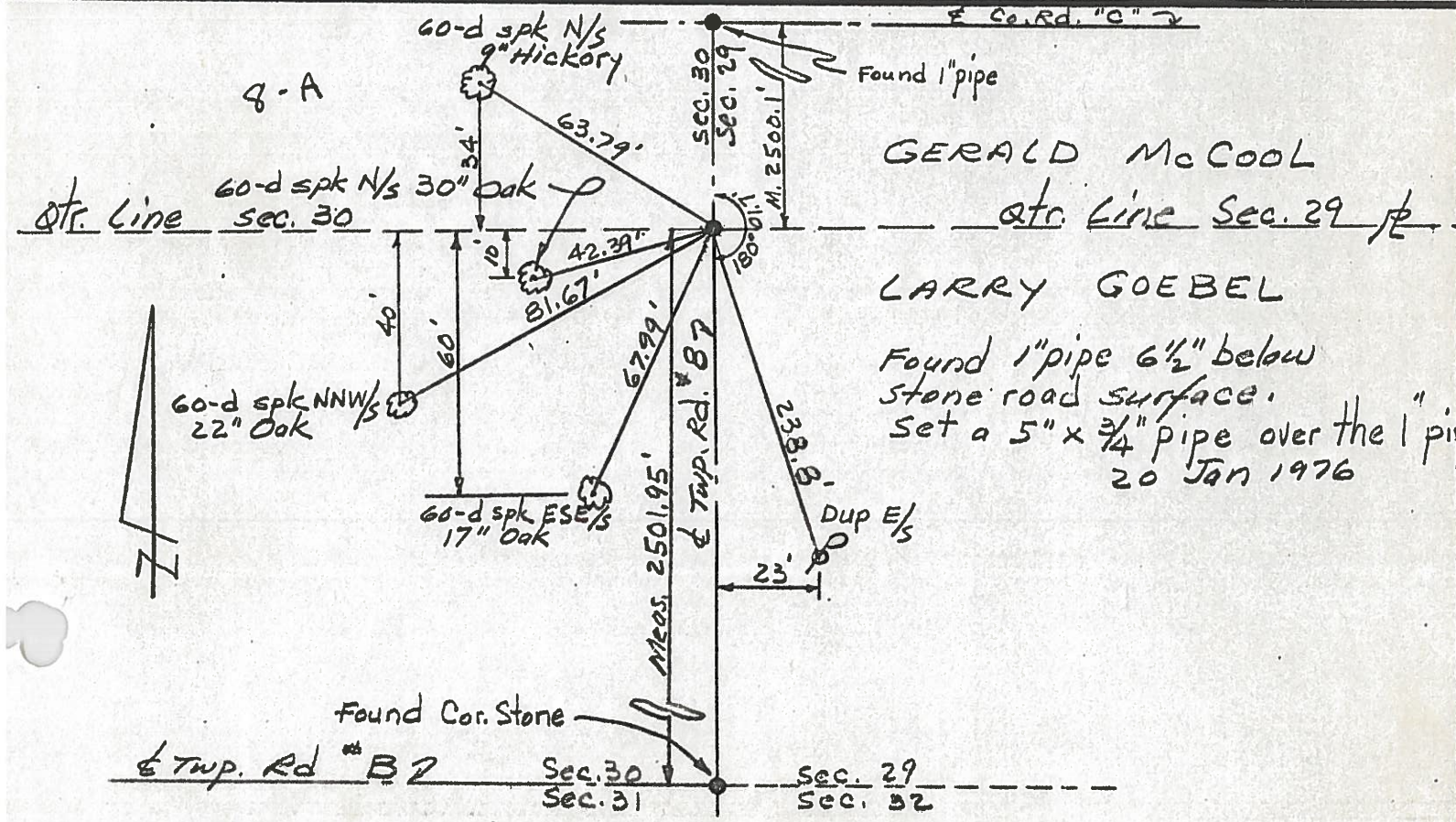
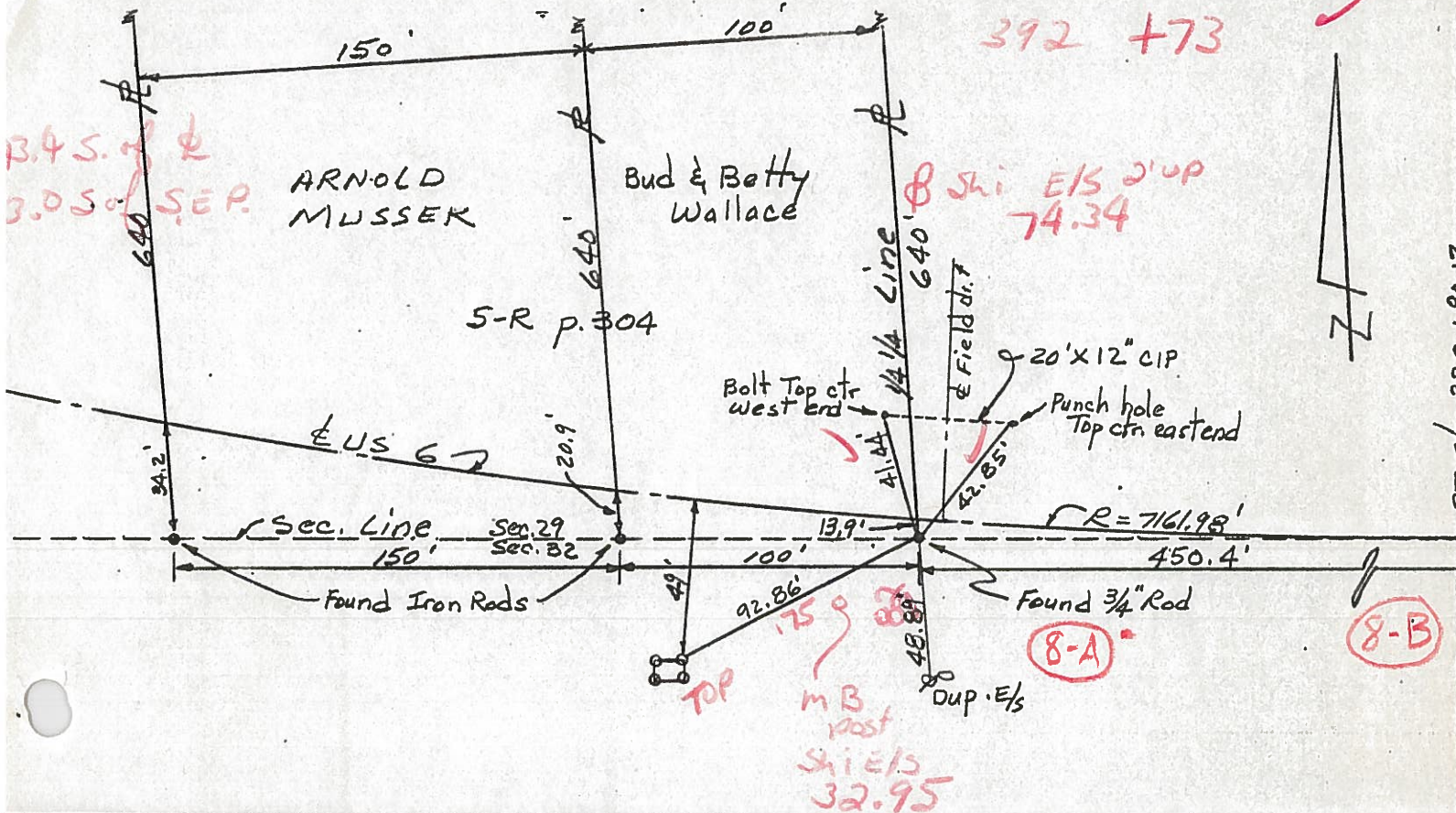
LOCATED 11-6-81

3.0' S. of S. EP.

DID NOT REDIG SWH



PERSONNEL TITLE PERSONNEL TITLE COUNTY Williams DATE Feb 76
Red Beach W. Knape S. R. US 6 WEATHER _____
 SEC. CENTER TWP TEMP _____
 DESCRIPTION CONTROL POINTS JOB NO. _____



PERSONNEL TITLE PERSONNEL TITLE

Red Beach
W. Knape

COUNTY Williams DATE Feb 76

S. R. US 6 WEATHER

SEC. CENTER TWP TEMP

DESCRIPTION CONTROL POINTS JOB NO.

