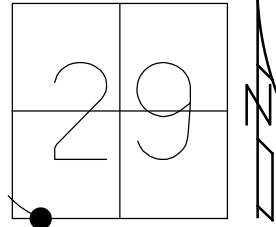


O.D.O.T. DISTRICT 2 SURVEY OFFICE (USE ONLY)

PERSONNEL _____ REFERENCE NO. 8 B SHEET 22 OF 41
 NOTES RHOADES DATE 7/19/18 ROUTE US 6
 H.C. O'DONNELL WEATHER SUNNY COUNTY WILLIAMS
 R.C. HAGEMeyer TEMP. 72° TOWNSHIP CENTER
 _____ TRENKA SECTION 29
 DWG BY NIESE PID 102827 T 6 N R 2 E

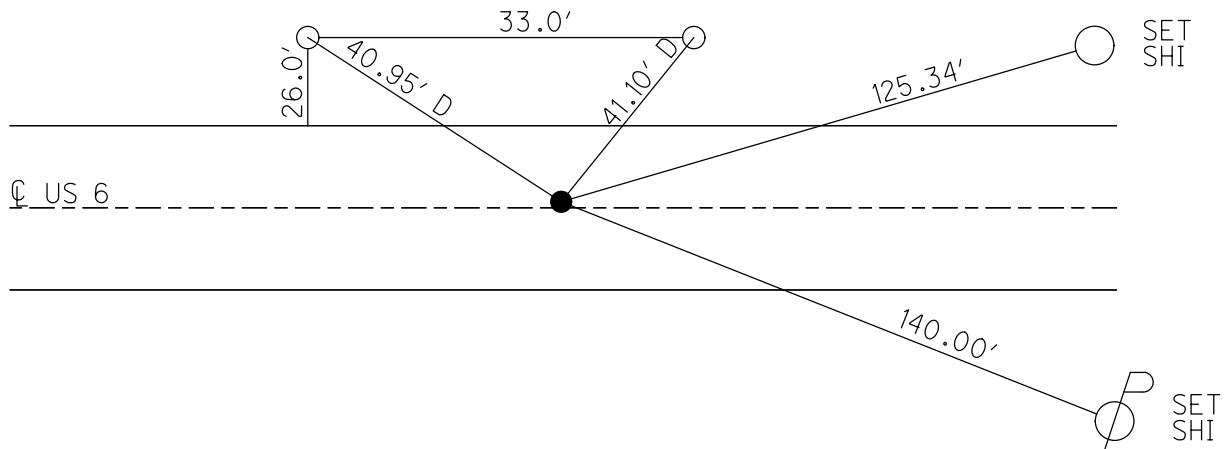
TYPE MONUMENT P.K./WASHER
 ON SURFACE - ~~BELOW~~ ON
 OFFSET Q PAVEMENT 0.2' LT : ~~RT~~
10.2' TO LT EDGE PAVEMENT
 STATION: 397+16.69

HORZ.DATUM: NAD83 2011 GEOID: NAVD88 2012A
 GRID: NORTHING: 654140.152 EASTING: 1375253.072



RECORD: P.T.
 STA.220+90.17
 FD P.K./WASHER
 5/5/00, MRC
 SET P.K./WASHER
 8/3/00, MRC
 FD P.K./WASHER
 REFB8
 3/31/17, DCH
 SET MAG/WASHER
 10/2/19, JLL

FD 5/8"
 IPINS



O.D.O.T. DISTRICT 2 SURVEY OFFICE

PERSONNEL

REFERENCE NO. 8-B

SHEET 25 OF 32

NOTES CANTERBURY

H.C. MOSEK

R.C. BARNASEL III

DATE 5-5-00

WEATHER cloudy

TEMP. +75°

ROUTE US 6

COUNTY WILLIAMS

TOWNSHIP CENTER

SECTION 29

T 6 N R 2 E

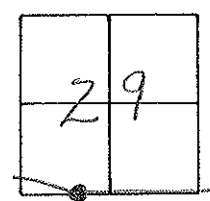
TYPE MONUMENT PK/WASHER

ON SURFACE - BELOW yes

LEFT-CL PAV'T. - RIGHT 0.2'

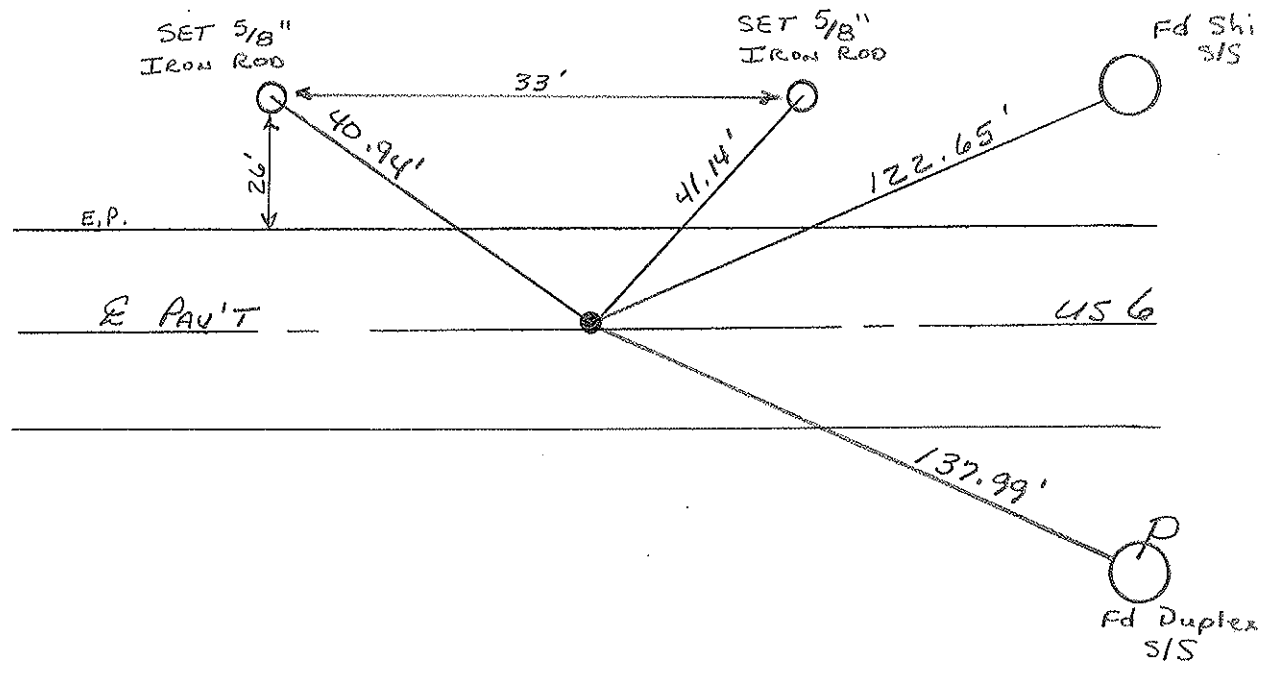
10.2' TO LT EDGE PAVEMENT

S.L.M. 397+29



Record PT. = Sta: 220+90.17

RESET PK/WASHER
 8-3-00
 M.R.C.



O.D.O.T. DISTRICT 2 SURVEY OFFICE

PERSONNEL

REFERENCE NO. 23

SHEET 23 OF

NOTES LOHRKE

H.C. REED

R.C. BARNHISEL

Hoffman

DATE 4-12-88

WEATHER CLEAR

TEMP. +65

ROUTE U.S. 6

COUNTY Williams

TOWNSHIP CENTER

SECTION 29

T. 6 N. R. 2 E.

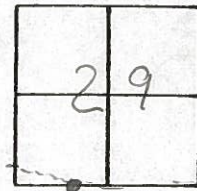
TYPE MONUMENT P.K. NAIL Reset 6-288

ON SURFACE - ~~BELOW~~

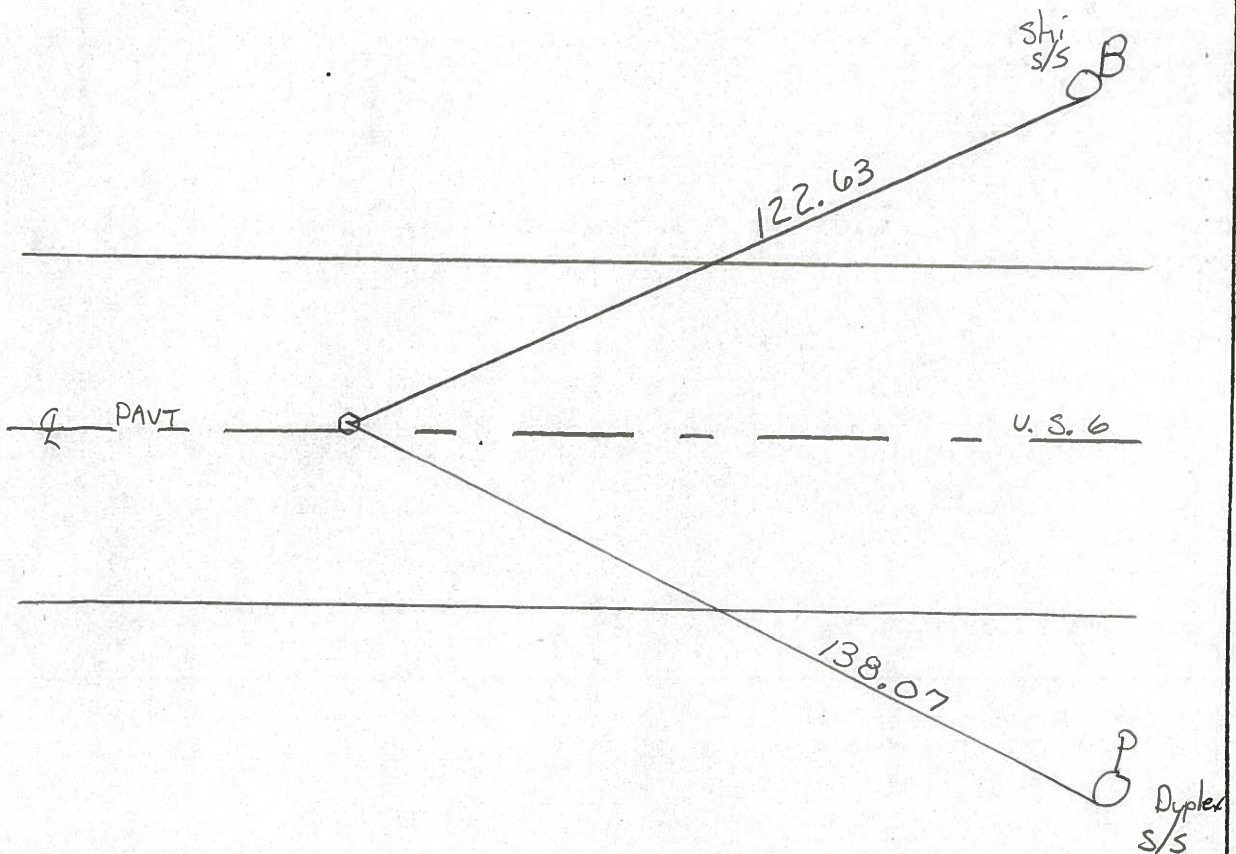
LEFT - ~~C~~ PAV'T. - ~~RIGHT~~ 0.2

10.2 TO Lt EDGE PAVEMENT

S.L.M. 397 + 29



8-B



RECORD

P.T. Sta 220 + 90.17

County Williams S.R. U.S. 6

Date 7-21-81

Township Center

Weather cloudy

Section 29

Temp. +70°

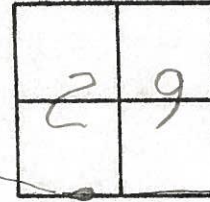
T6N, R2E

Personnel HOFFMAN

Loehrke

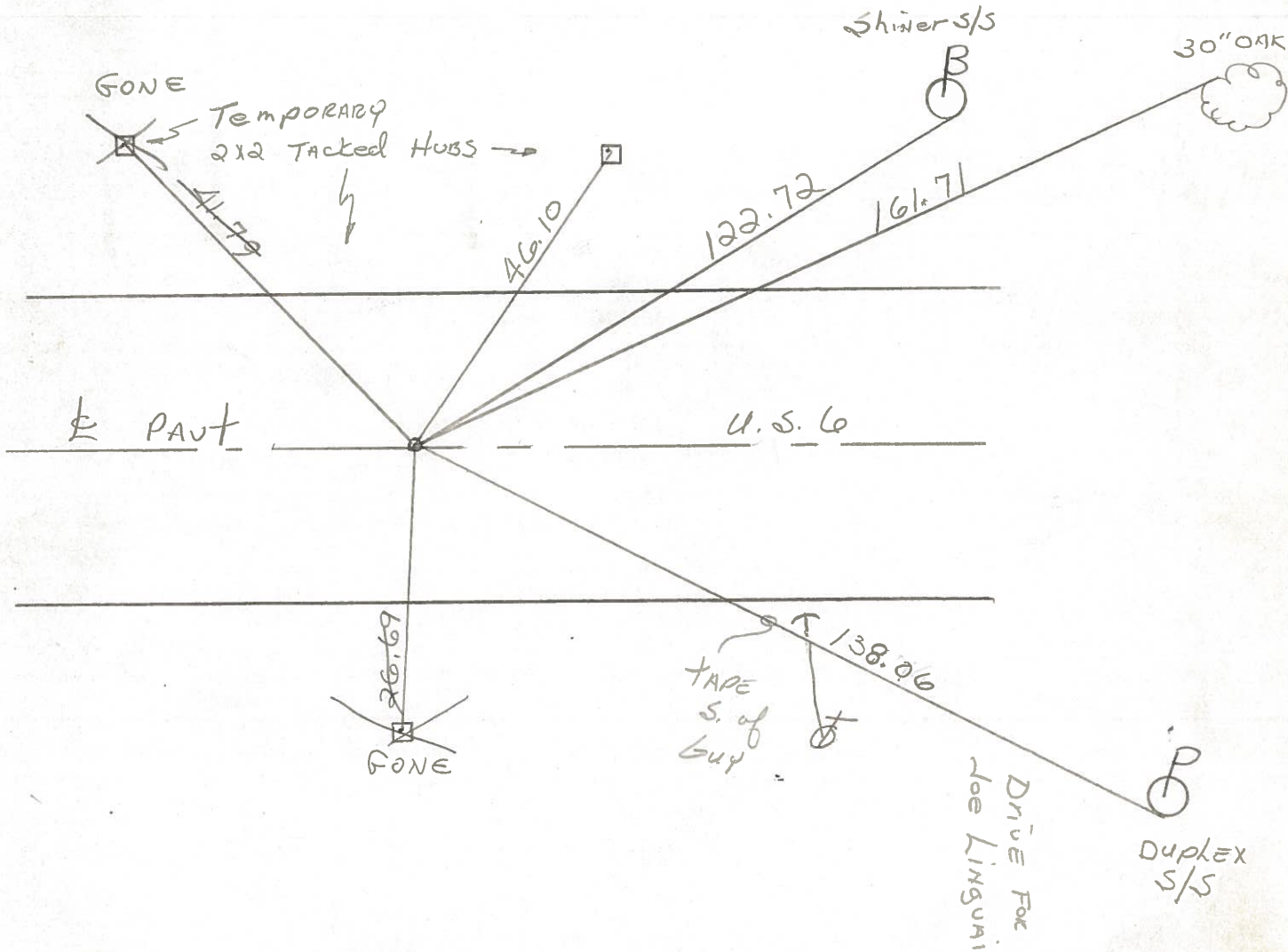
Householder

8-B



Fd. P.K. Nail 1" Below Surface
10.9' to N. EP.
11.0' to S. EP.
SET P.K. 11-10-81
SANT

Project STA. ± 397 + 24



P. T. STA. 220 + 90.17 ~ Rec.

PERSONNEL TITLE PERSONNEL TITLE

COUNTY Williams DATE 12 Feb 76

Red Beach
W. Krape

S. R. US 6 WEATHER

SEC. 29/32 CENTER TWP TEMP

DESCRIPTION CONTROL POINTS JOB NO.

10.7 to N.E.P.
11.1 to S.E.P.

383+43

Ed. W. Burns Res.

w/s 4" Maple

4" spruce
sh. sws

70.66

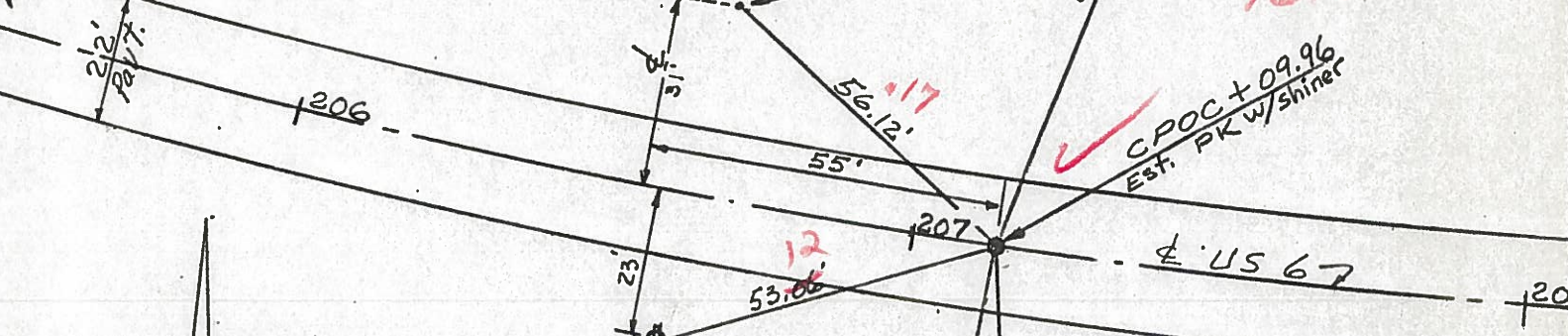
8

2" Blacktop on 9" conc.

20'x12" CMP Burns dr.

PK top ctr east end

CPOC + 09.96
Est. PK w/shiner



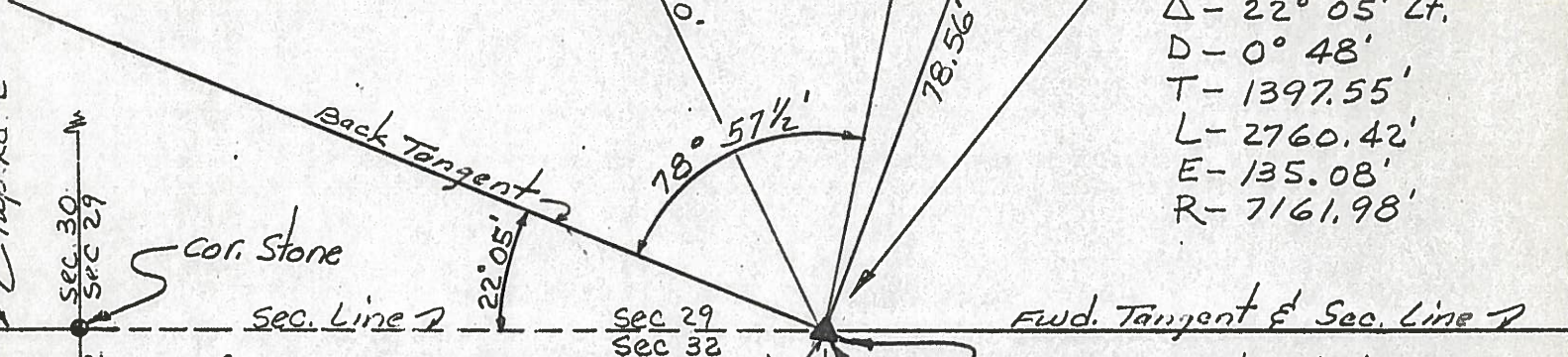
Near side 2" I.D. Steel MB post

Dup. wsw/s 6" Juniper

Near side 2" stl. pipe GAS LINE CAGE 1 1/2 x 2 1/2



PI. Sta. 207+27.31
 Δ - 22° 05' Lt.
 D - 0° 48'
 T - 1397.55'
 L - 2760.42'
 E - 135.08'
 R - 7161.98'



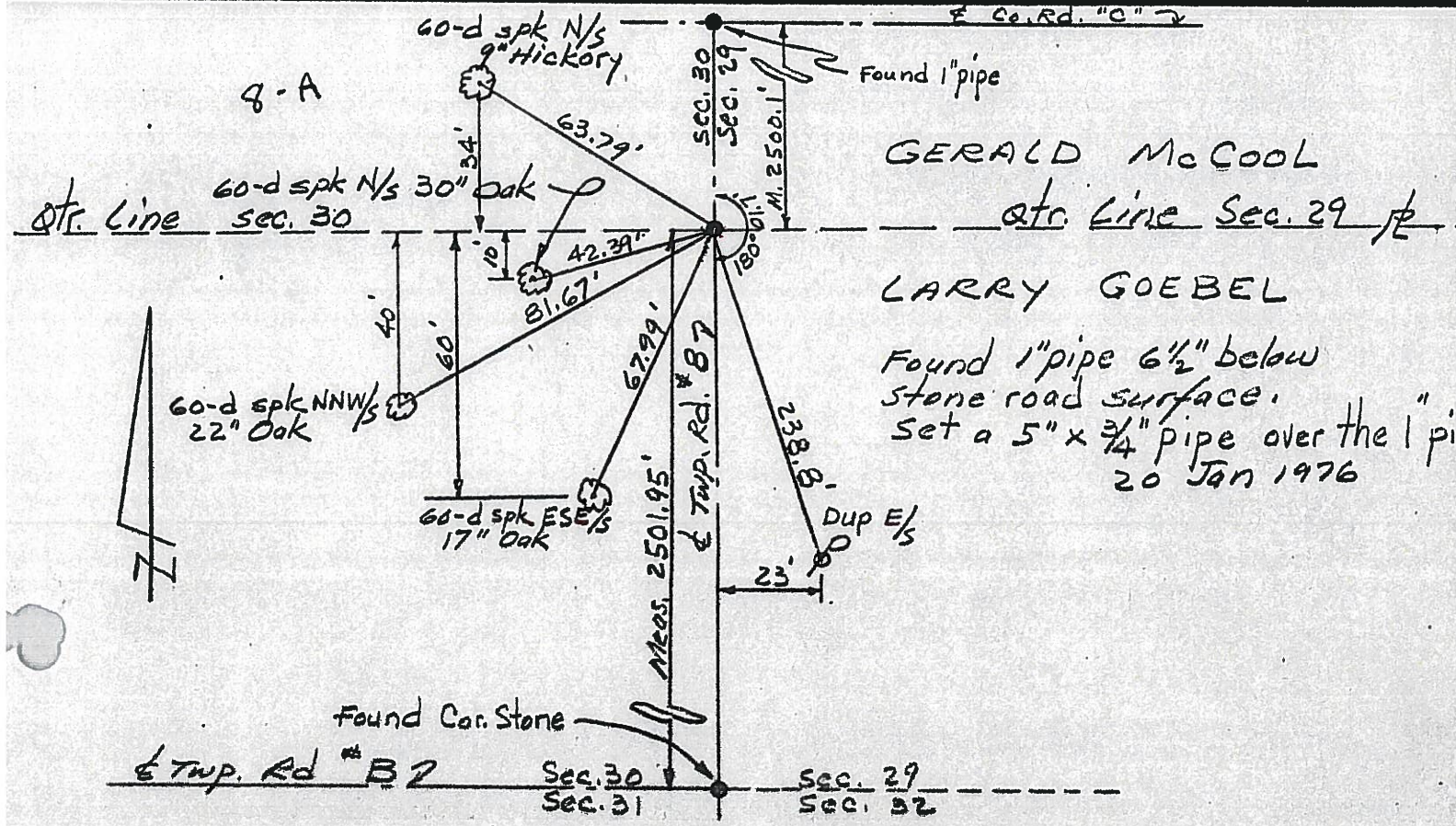
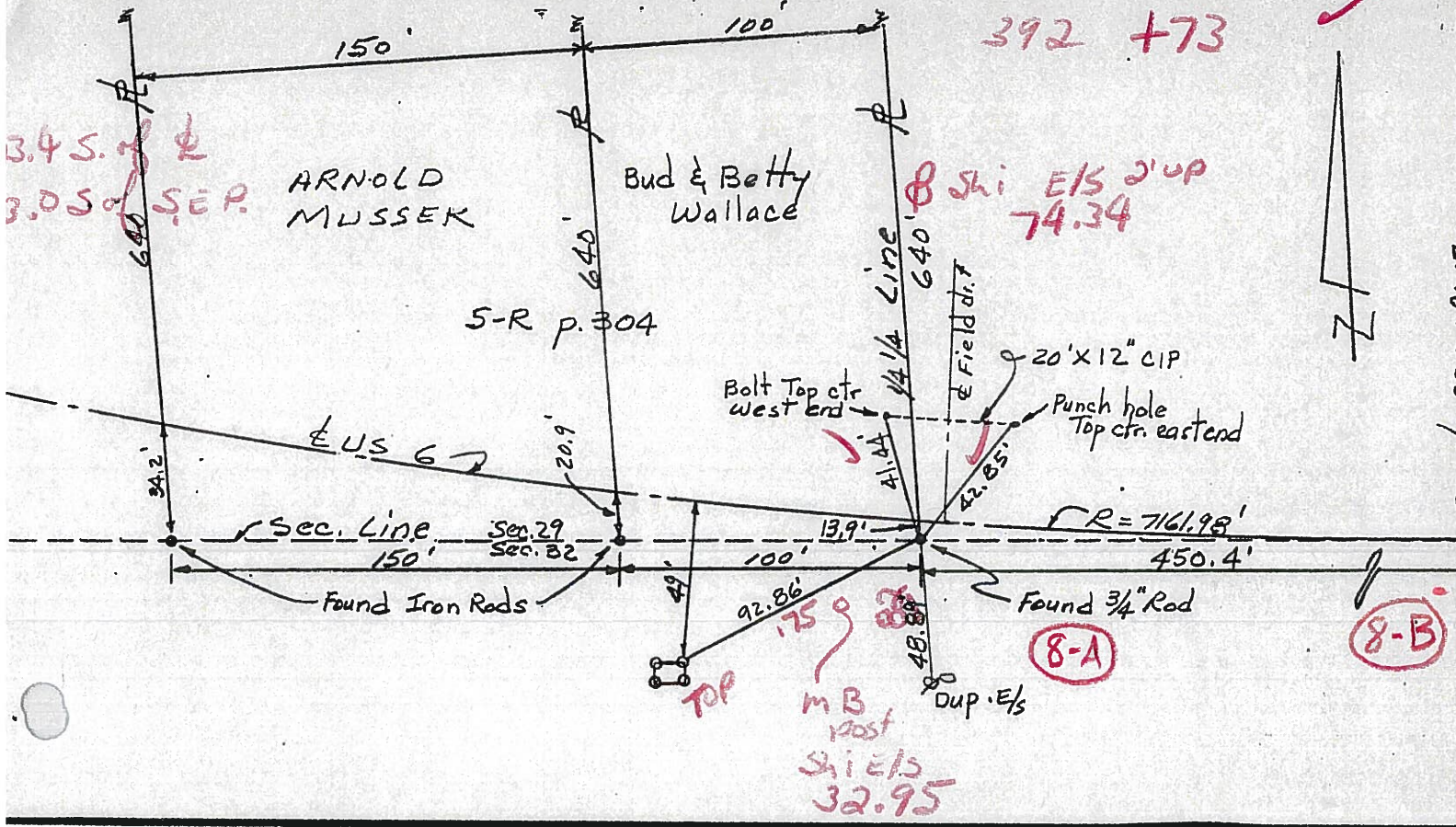
8-B

Found old, rotted wood hub 2" below sod.
 Found the hub on sec line from old referen
 Replaced hub with a 24" x 1" pipe.

DID NOT

Temp Rd. # 8
 Sec. 31
 Sec. 30
 Sec. 29
 Sec. 32
 Sec. 32

PERSONNEL TITLE PERSONNEL TITLE COUNTY Williams DATE Feb 76
Red Beach _____
W. Knape _____
 S. R. US 6 WEATHER _____
 SEC. CENTER TWP TEMP _____
 DESCRIPTION CONTROL POINTS JOB NO. _____



PERSONNEL TITLE PERSONNEL TITLE

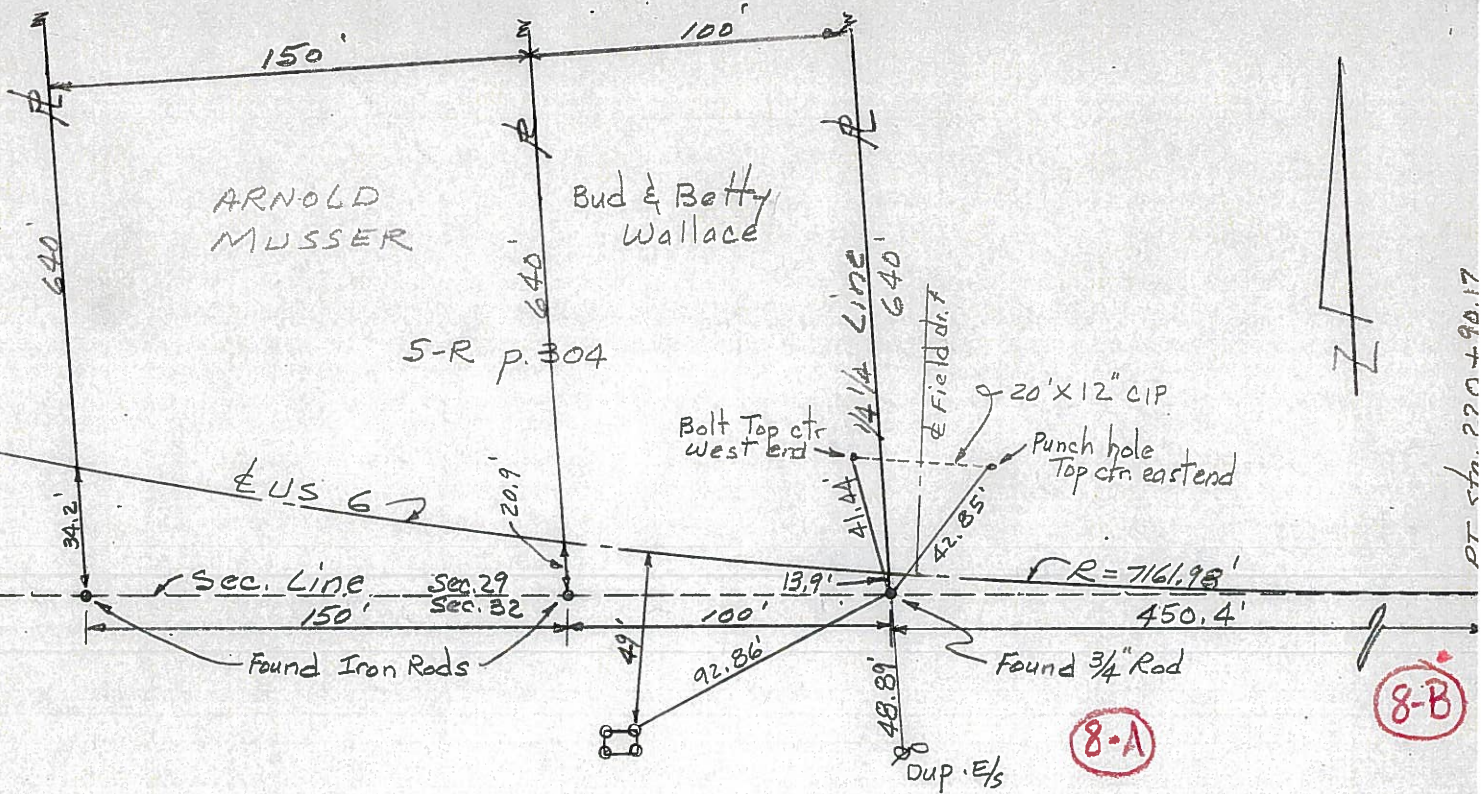
Red Beach
W. Knape

COUNTY Williams DATE Feb 76

S. R. US 6 WEATHER

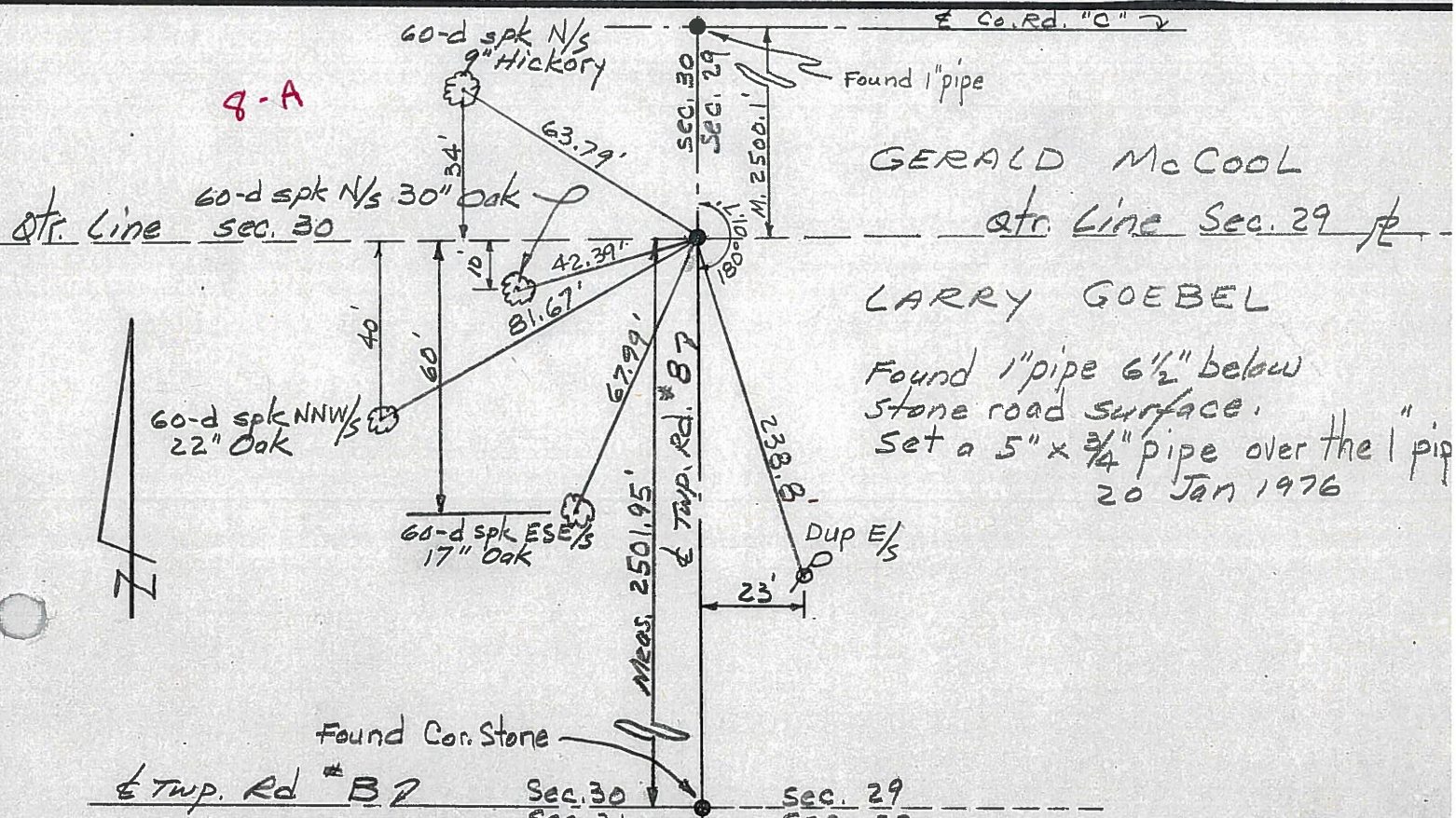
SEC. 27/2 CENTER TWP TEMP.

DESCRIPTION CONTROL POINTS JOB NO.



8-B

8-A

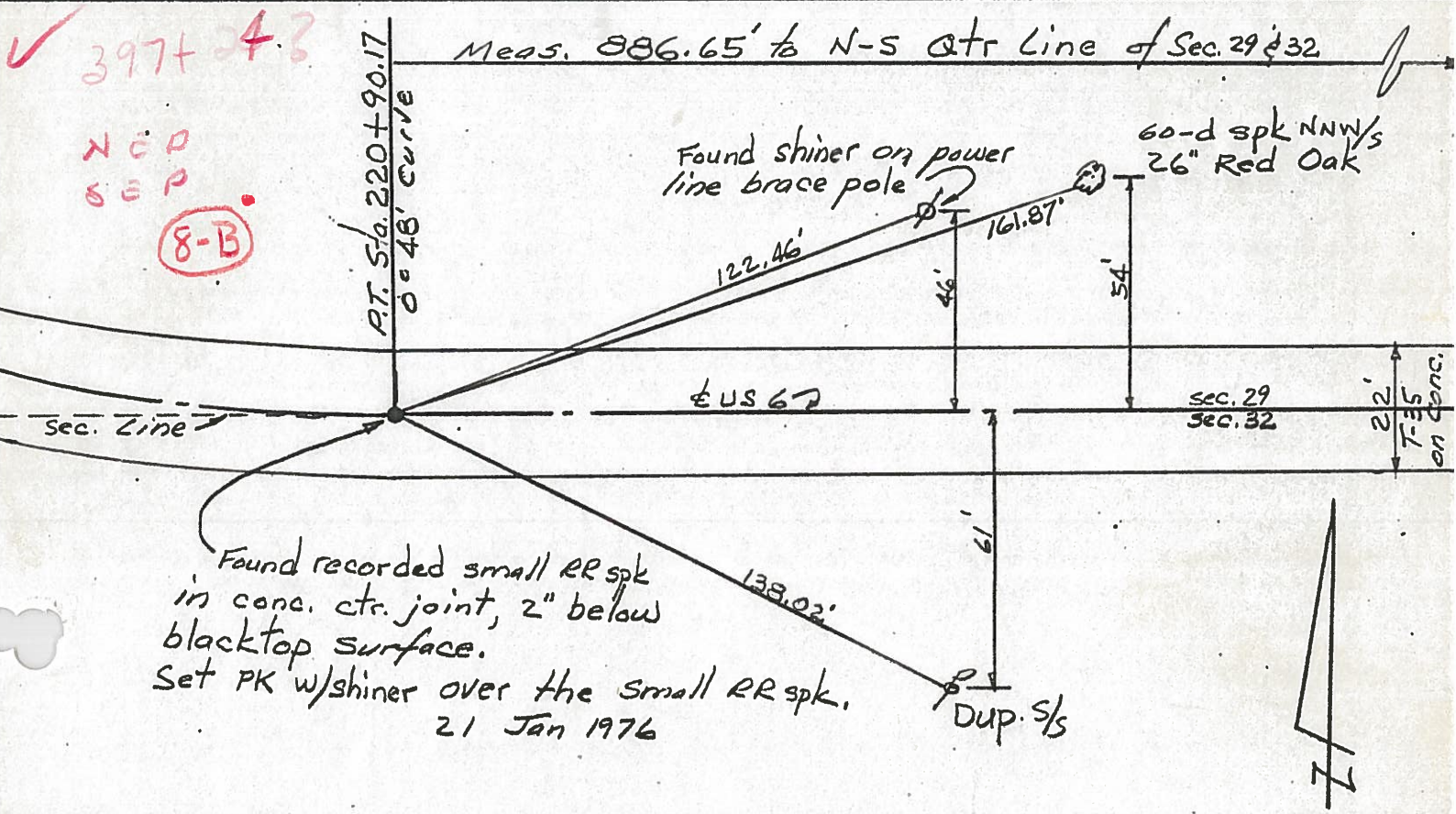
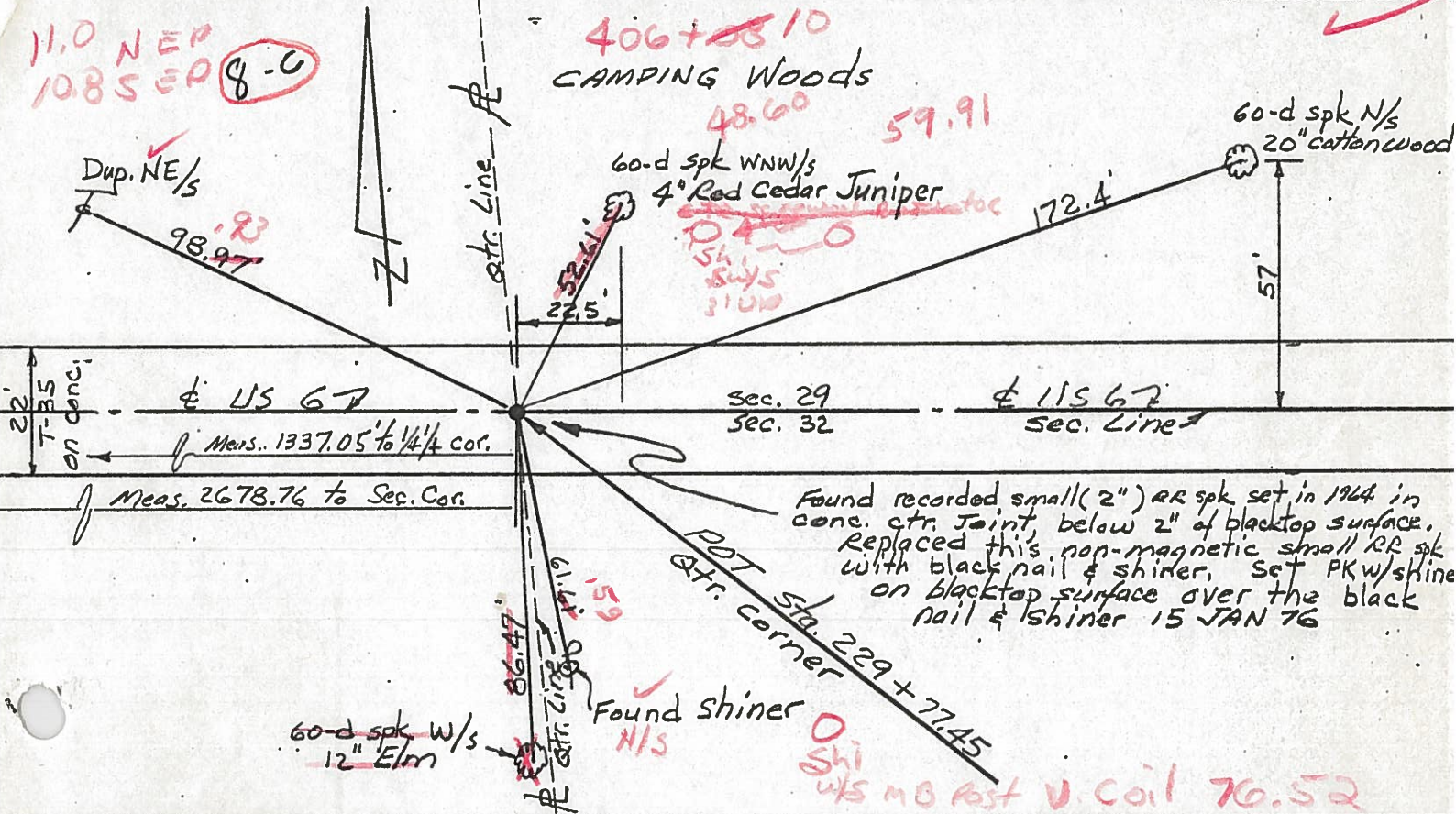


8-A

GERALD McCool
 LARRY GOEBEL
 Found 1" pipe 6 1/2" below
 stone road surface.
 Set a 5" x 3/4" pipe over the 1" pipe
 20 Jan 1976



PERSONNEL	TITLE	PERSONNEL	TITLE	COUNTY	DATE	WEATHER	TEMP
Red Beach				Williams	JAN 1976		
W. Knape				US 6			
DESCRIPTION CONTROL POINTS				SEC. CENTER TWP			
				JOB NO.			



PERSONNEL	TITLE	PERSONNEL	TITLE
Louys			
Wise			
Krohn			
Pessefall			

COUNTY Wi. DATE 9/4/58

S. R. 6 WEATHER FAIR

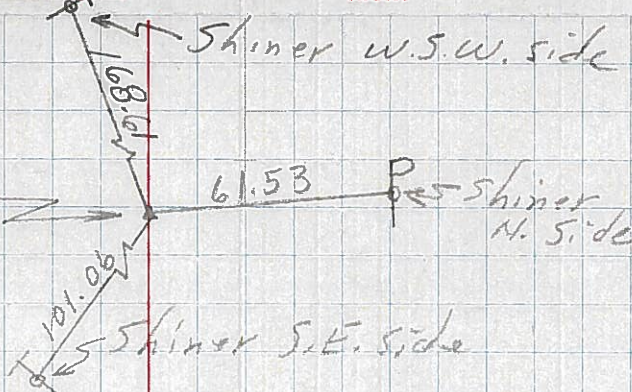
Edgerton E. Corp Lins.

SEC. to INT. N. RT. #2 TEMP. 75°

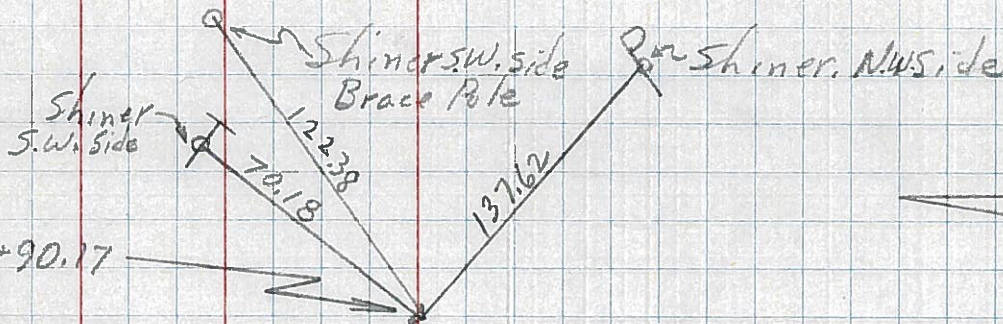
DESCRIPTION Witnesses to Control Points JOB NO. _____

LEFT CENTER LINE RIGHT

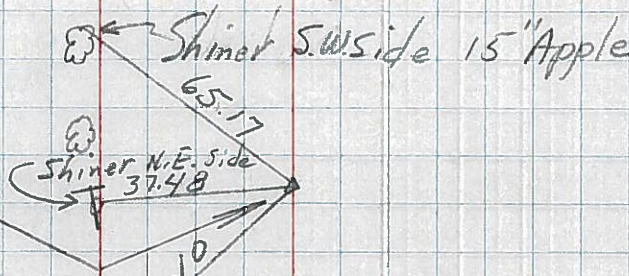
8-D 19
 P.O.T. - sta. 229+77.45
 X - in Pav't.



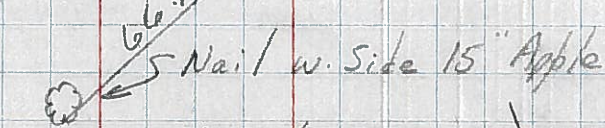
8-B 13
 P.T. - sta. 220+90.17
 X - in Pav't.



12
 P.I. - sta. 207+27.31
 $\Delta = 22^\circ 05' LT.$
 No Record.



7-C 11
 P.C. - sta. 193+29.76
 3/4" Iron Rod



7-B 10
 P.I. - sta. 178+29.75
 $\theta = 27' LT.$
 X in Pav't.

