

O.D.O.T. DISTRICT 2 SURVEY OFFICE (USE ONLY)

PERSONNEL

REFERENCE NO. 8 C

SHEET 23 OF 41

NOTES RHOADES

DATE 7/19/18

ROUTE US 6

H.C. O'DONNELL

WEATHER SUNNY

COUNTY WILLIAMS

R.C. HAGEMEYER

TEMP. 72°

TOWNSHIP CENTER

TRENKA

DWG BY NIESE

PID 102827

SECTION 29

T 6 N R 2 E

TYPE MONUMENT P.K./WASHER

ON SURFACE - ~~BELOW~~ ON

OFFSET 0.3' ~~±~~ : RT

12.2' TO RT EDGE PAVEMENT

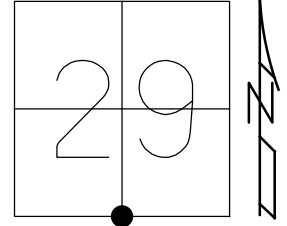
STATION: 406+03.6

HORZ.DATUM: NAD83 2011

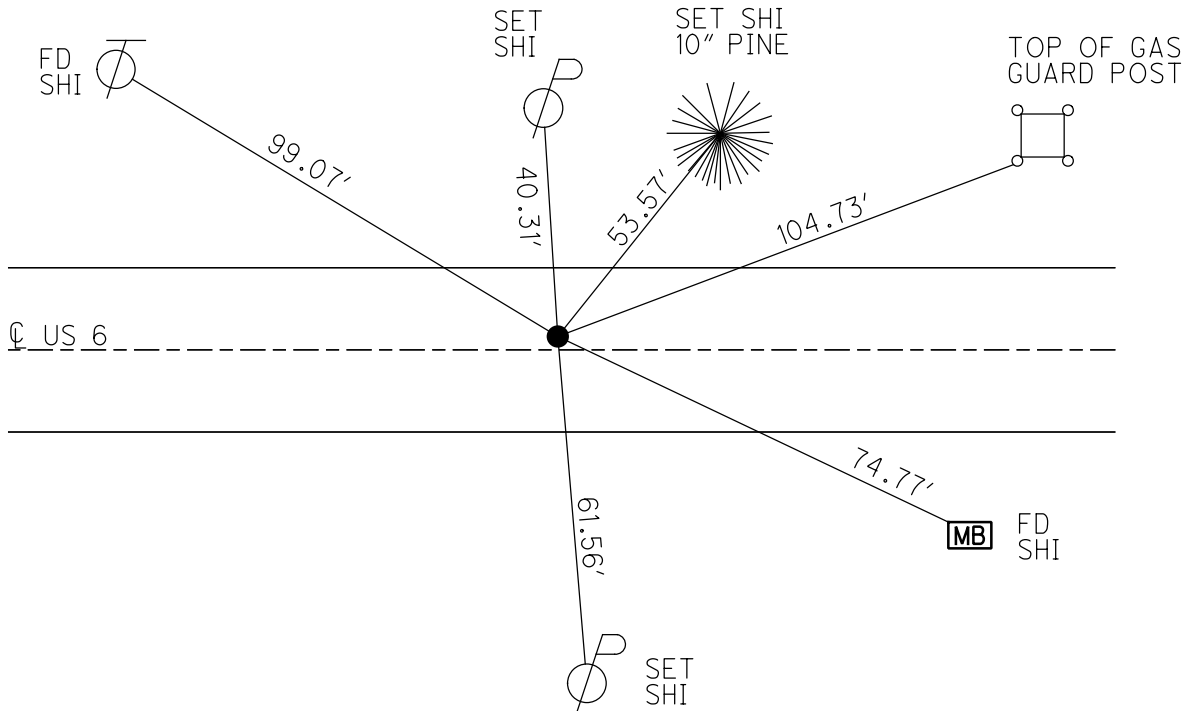
GEOID: NAVD88 2012A

GRID: NORTHING: 654062.061

EASTING: 1376135.936



RECORD: P.O.T  
 STA.229+77.45  
 1976  
 FD P.K./WASHER  
 5/5/00, MRC  
 SET P.K./WASHER  
 8/3/00, MRC  
 FD P.K./WASHER  
 REFC8  
 3/31/17, DCH  
 SET MAG/WASHER  
 10/2/19, JLL



# O.D.O.T. DISTRICT 2 SURVEY OFFICE

PERSONNEL

REFERENCE NO. 8-C

SHEET 26 OF 32

NOTES CANTERBURY

H.C. MOSEK

R.C. BARNHISEL III

DATE 5-5-00

WEATHER cloudy

TEMP. +75°

ROUTE US 6

COUNTY WILLIAMS

TOWNSHIP CENTER

SECTION 29

T 6 N R 2 E

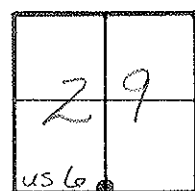
TYPE MONUMENT PK/WASHER

ON SURFACE - BELOW YES

LEFT - CL PAV'T. - RIGHT 0.3'

12.2' TO RT. EDGE PAVEMENT

S.L.M. 406+16



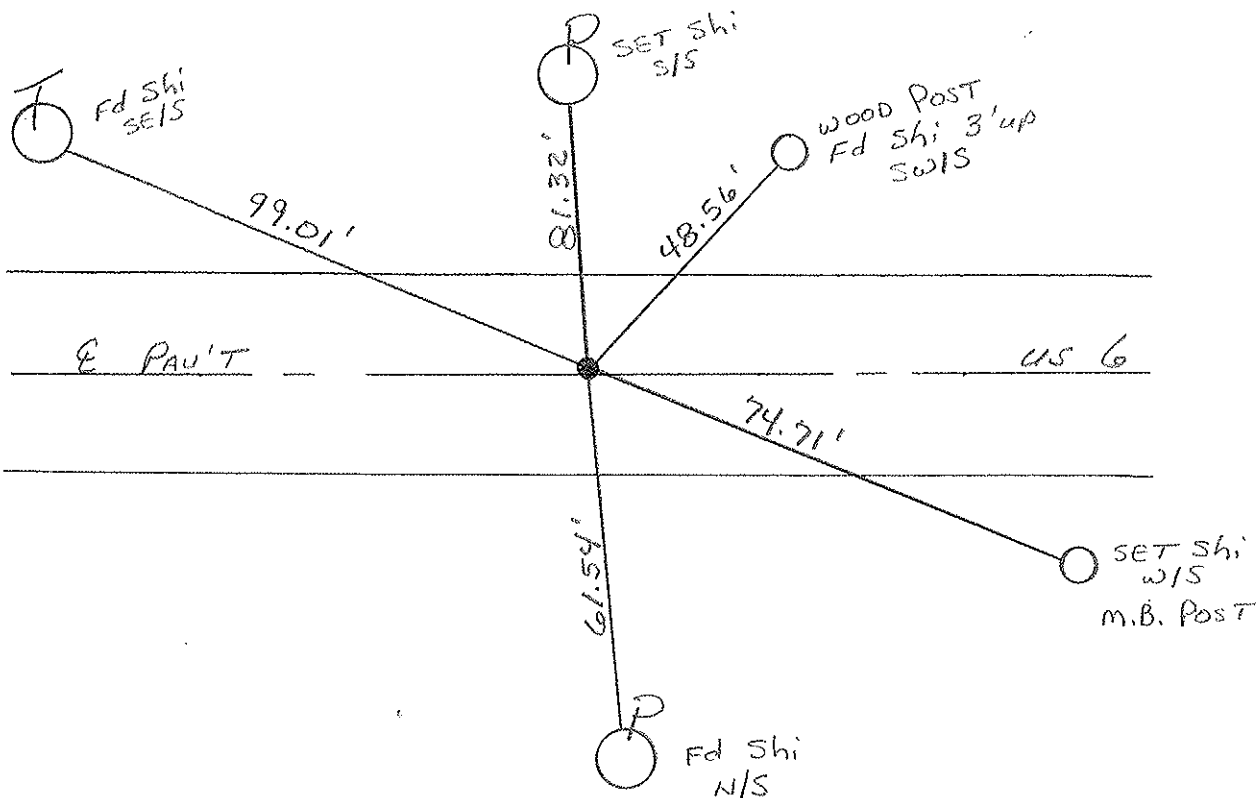
Record P.O.T. Sta: 229+77.45  
1976

Reset PK/Washer

8-3-00

M.R.C.

Res. # 08523



# O.D.O.T. DISTRICT 2 SURVEY OFFICE

PERSONNEL

REFERENCE NO. 8C

SHEET 24 OF       

NOTES LOEHRKE

H.C. REED

DATE 4-12-88

ROUTE U.S. 6

R.C. BARNHISEL

WEATHER CLEAR

COUNTY Williams

Hoffman

TEMP. 76.5

TOWNSHIP CENTER

SECTION 29

T 6 N R 2 E

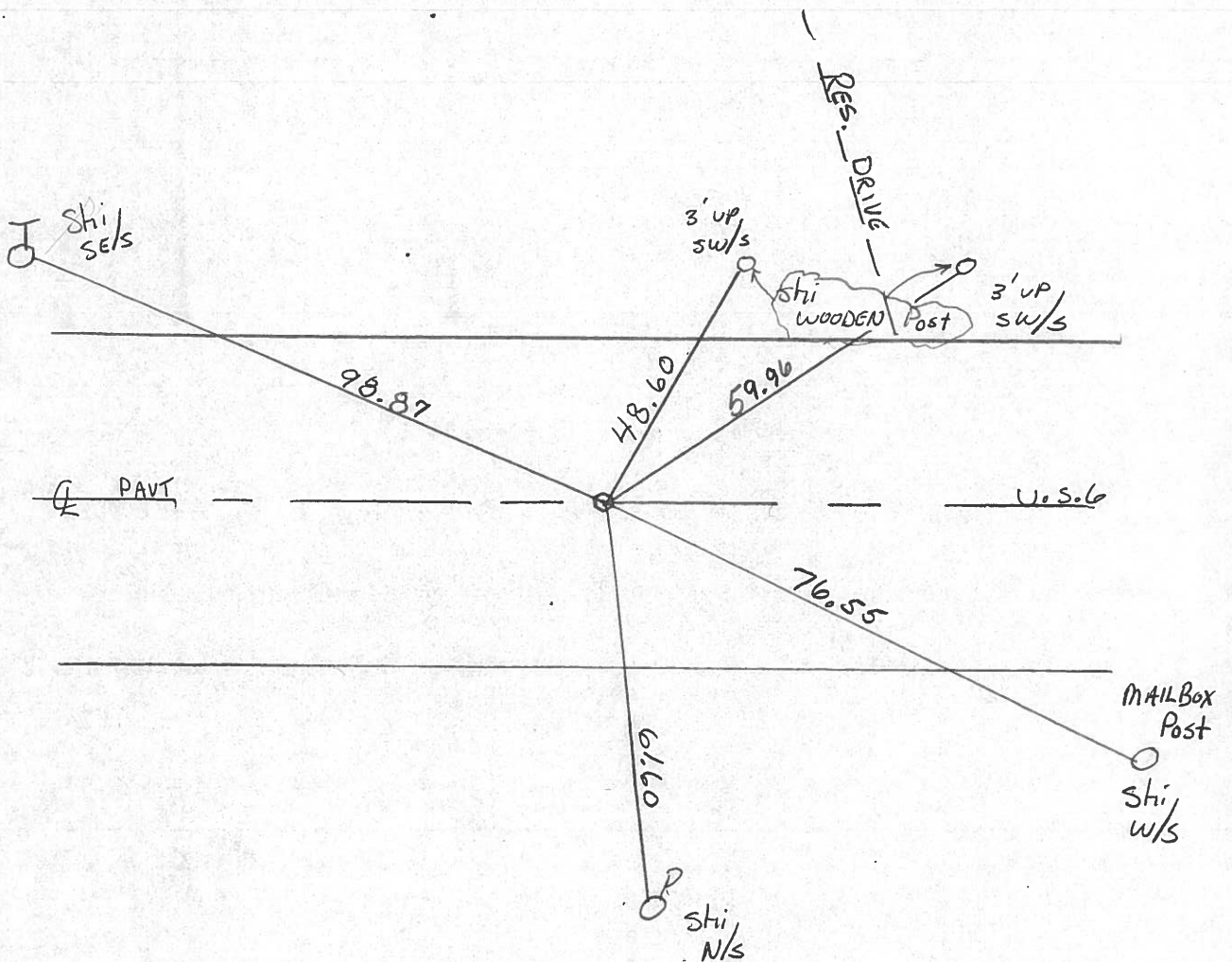
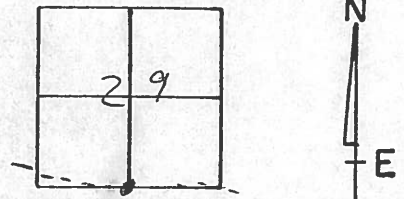
TYPE MONUMENT Reset P.K. NAIL 6-6-88 CL

ON SURFACE - BELOW

~~LEFT - & PAV'T. - RIGHT~~

11.0 TO RT EDGE PAVEMENT

S.L.M. 406+16 9



RECORD

P.O.T. Sta 229+77.45

County Williams S.R. U.S. 6

Date 7-21-81

Township Center

Weather cloudy

Section 29

Temp. +70°

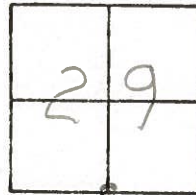
T6N, R2E

Personnel HOFFMAN

Loehrke

Householder

9-U



FD. P.K. Nail @ surface

PROJECT STA ± 406 +10

11.0' to N. EP.

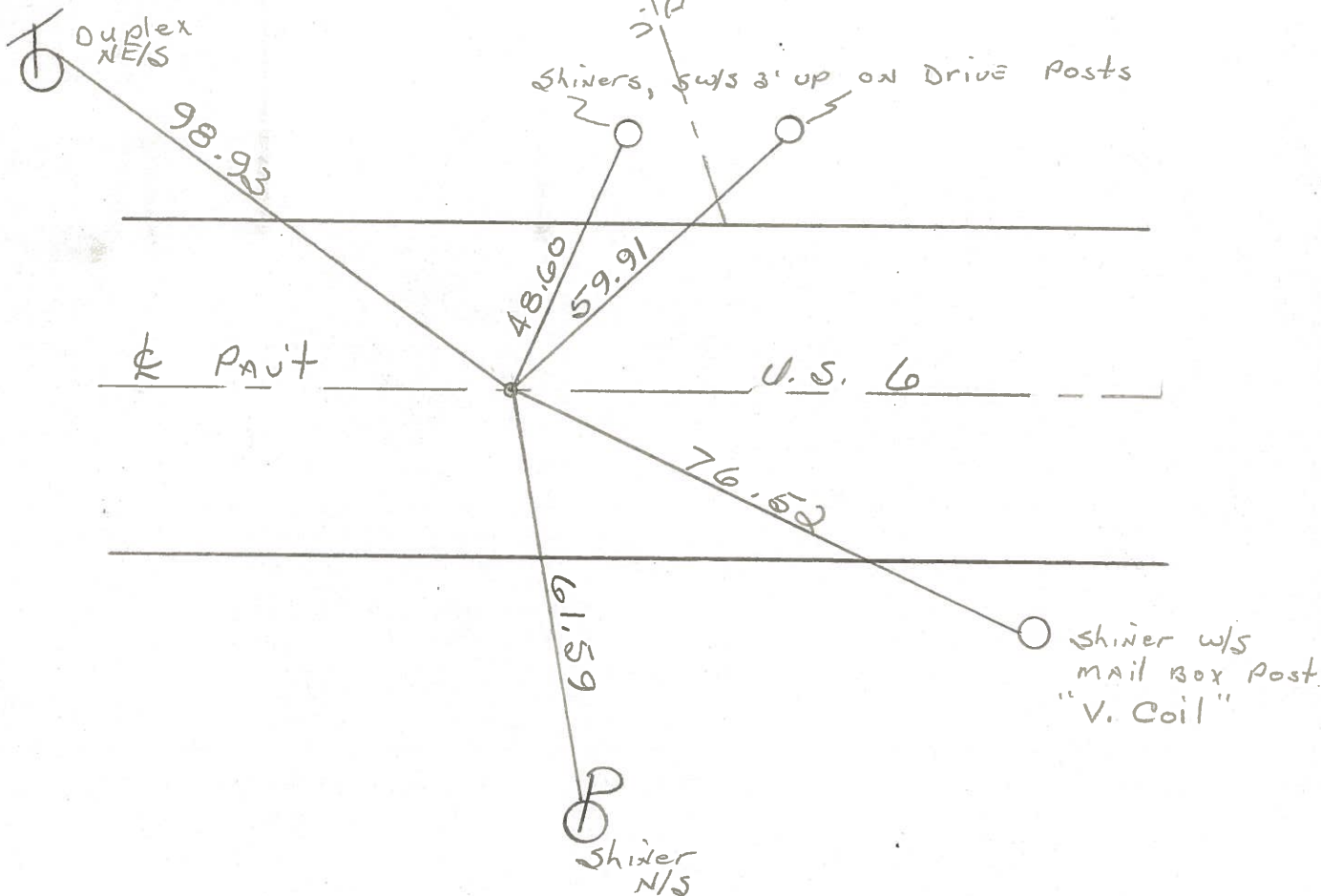
10.8' to S. EP.

SET SMALL

R.R. SPK.

11-6-81

SWH



P.O.T. STA. 229 + 77.45 ~ Rec.

PERSONNEL TITLE PERSONNEL TITLE

STREET NO.

Red Beach  
W. Knappe

COUNTY Williams DATE JAN 1976

S. R. US 6 WEATHER

SEC. CENTER TWP TEMP

DESCRIPTION CONTROL POINTS JOB NO.

11.0 NEP  
10.8 SEP (8-C)

406+310  
CAMPING Woods

48.60 59.91

60-d spk N/S  
20" cotton wood

Dup. NE/S  
98.97

60-d spk WNW/S  
4" Red Cedar Juniper

Sh. S/S  
3100

22' T-35 on conc.  
US 67  
Meas. 1337.05' to 1/4" cor.

Sec. 29  
Sec. 32  
US 67  
Sec. Line

Meas. 2678.76 to Sec. Cor.

Found recorded small (2") RR spk set in 1964 in conc. ctr. joint, below 2" of blacktop surface. Replaced this non-magnetic small RR spk with black nail & shiner. Set PK w/shiner on blacktop surface over the black nail & shiner 15 JAN 76

POT Sta. 229+77.45  
ctr. corner

60-d spk W/S  
12" E/m

Found shiner N/S

Shi W/S MB Post V. coil 70.52

397+4.8

NEP  
SEP  
(8-B)

Meas. 886.65' to N-S ctr Line of Sec. 29 & 32

Found shiner on power line brace pole

60-d spk NNW/S  
26" Red Oak

P.T. Sta. 220+90.17  
0°48' curve

122.46' 161.87'

US 67  
Sec. 29  
Sec. 32

22' T-35 on conc.

Found recorded small RR spk in conc. ctr. joint, 2" below blacktop surface. Set PK w/shiner over the small RR spk. 21 Jan 1976

Dup. S/S



PERSONNEL	TITLE	PERSONNEL	TITLE	COUNTY	DATE	WEATHER	TEMP.
Louys				Wi.	9/4/58	FAIR	75°
Wise				S. R. 6			
Krohn				Edgerton E. Corp Lim.			
Pessefall				SEC. 10 INT. IN RT. #2			
DESCRIPTION: Witnesses to Control Points				JOB NO.			

