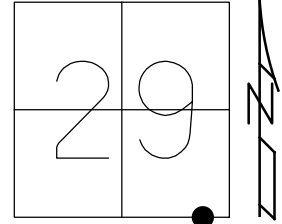


O.D.O.T. DISTRICT 2 SURVEY OFFICE (USE ONLY)

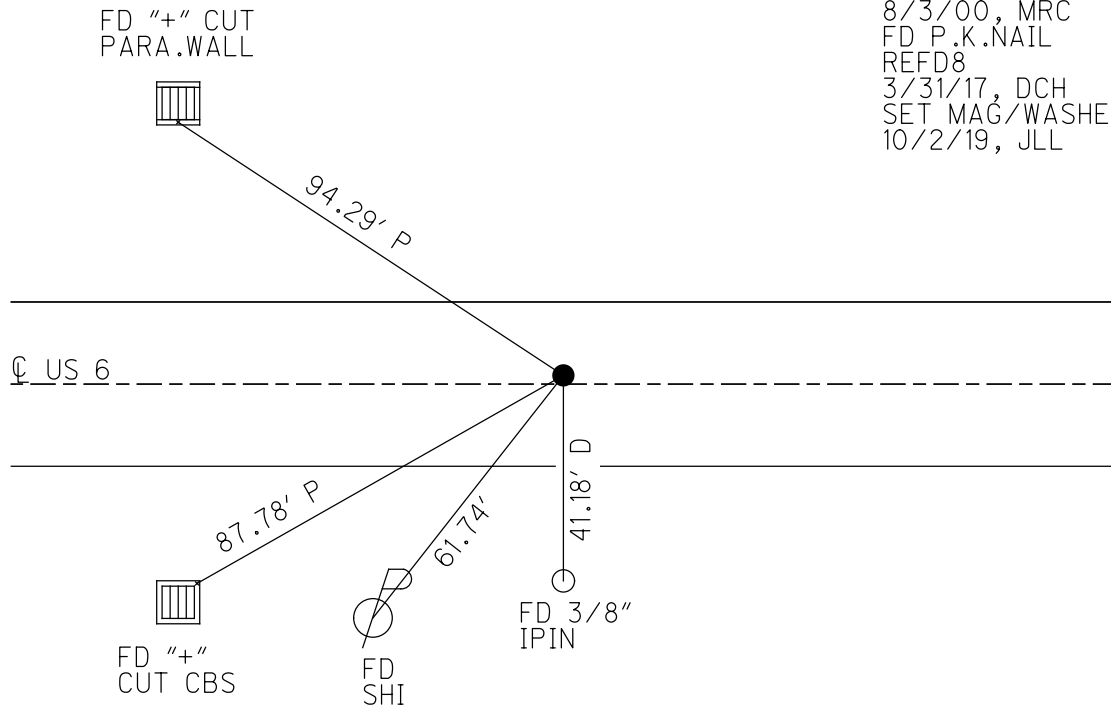
PERSONNEL _____ REFERENCE NO. 8 D SHEET 24 OF 41
 NOTES RHOADES DATE 7/19/18 ROUTE US 6
 H.C. O'DONNELL WEATHER CLOUDY COUNTY WILLIAMS
 R.C. TRENKA TEMP. 68° TOWNSHIP CENTER
 HAGEMEYER SECTION 29
 DWG BY NIESE PID 102827 T 6 N R 2 E

TYPE MONUMENT P.K.NAIL
 ON SURFACE - ~~BELOW~~ ON _____
 OFFSET C PAVEMENT 0.5' LT : ~~RT~~
11.8' TO LT EDGE PAVEMENT
 STATION: 427+42.14



HORIZ.DATUM: NAD83 2011 GEOID: NAVD88 2012A
 GRID: NORTHING: 653873.526 EASTING: 1378267.160

RECORD: P.C.
 STA 251+14.72
 1976
 FD P.K./WASHER
 5/5/00, MRC
 SET P.K./WASHER
 8/3/00, MRC
 FD P.K.NAIL
 REFD8
 3/31/17, DCH
 SET MAG/WASHER
 10/2/19, JLL



O.D.O.T. DISTRICT 2 SURVEY OFFICE

PERSONNEL

REFERENCE NO. B-D

SHEET 27 OF 32

NOTES CANTERBURY

H.C. MOSEK

DATE 5-5-00

ROUTE US 6

R.C. BRANNISSEL III

WEATHER cloudy

COUNTY WILLIAMS

TEMP. +75°

TOWNSHIP CENTER

SECTION 29

T6 N R 2 E

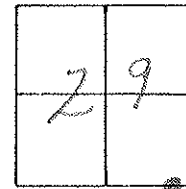
TYPE MONUMENT PK/washer

ON SURFACE - ~~BELOW~~ yes

LEFT-0 PAV'T. - RIGHT 0.5'

11.8 TO LT EDGE PAVEMENT

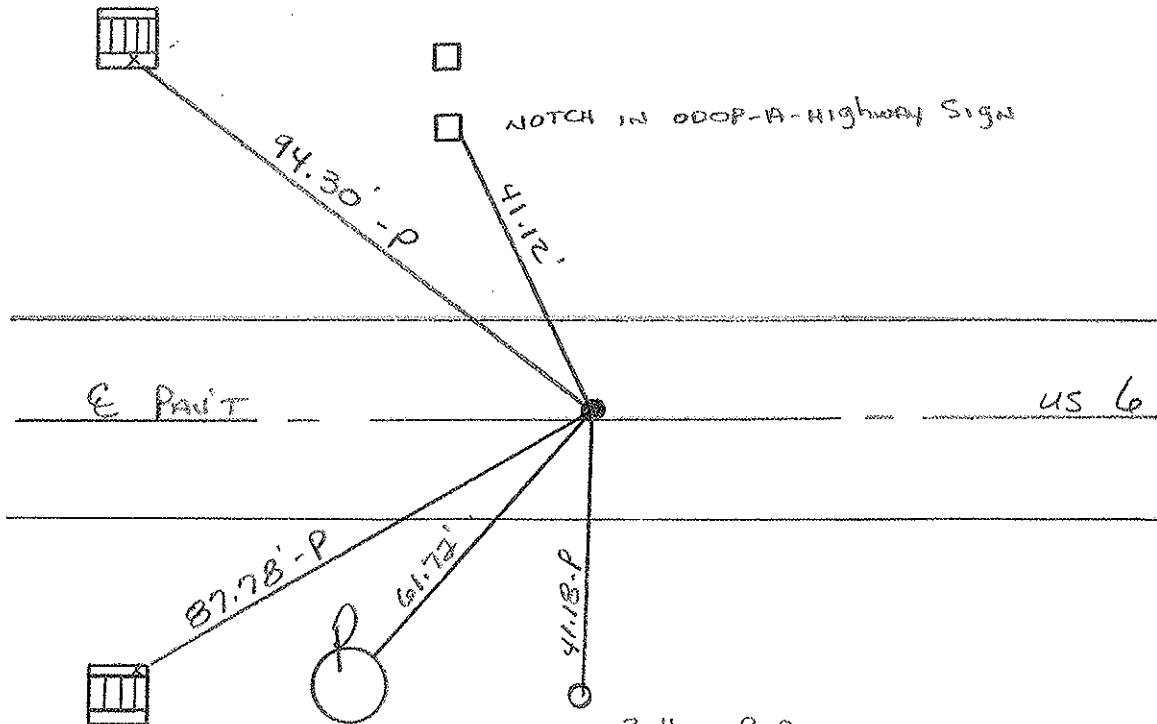
S.L.M. 427+55



1976 Record!
P.C. Sta. 251+14.72

Reset PK/Washer
B-3-00
MRC

Fd "+" TOP CENTER
OF S. PARA. WALL



"1" CUT TOP NE
CORNER OF PARA. WALL
NE CORNER

SET SHI
NE/S

Fd 3/8" I. ROD
FLUSH w/ GROUND

O.D.O.T. DISTRICT 2 SURVEY OFFICE

PERSONNEL

REFERENCE NO. 75

SHEET 25 OF

NOTES LOEHRYE

H.C. REED

DATE 4-12-88

ROUTE U.S. 6

R.C. BARNHISEL

WEATHER CLEAR

COUNTY Williams

HOFFMAN

TEMP. 76.5

TOWNSHIP CENTER

SECTION 29

T. 6 N. R. 2 E.

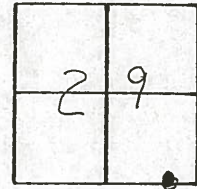
TYPE MONUMENT PK & WASHER 6-2-88
Small R.R. Spike

ON SURFACE - BELOW

~~LEFT~~ - C PAV'T. - ~~RIGHT~~

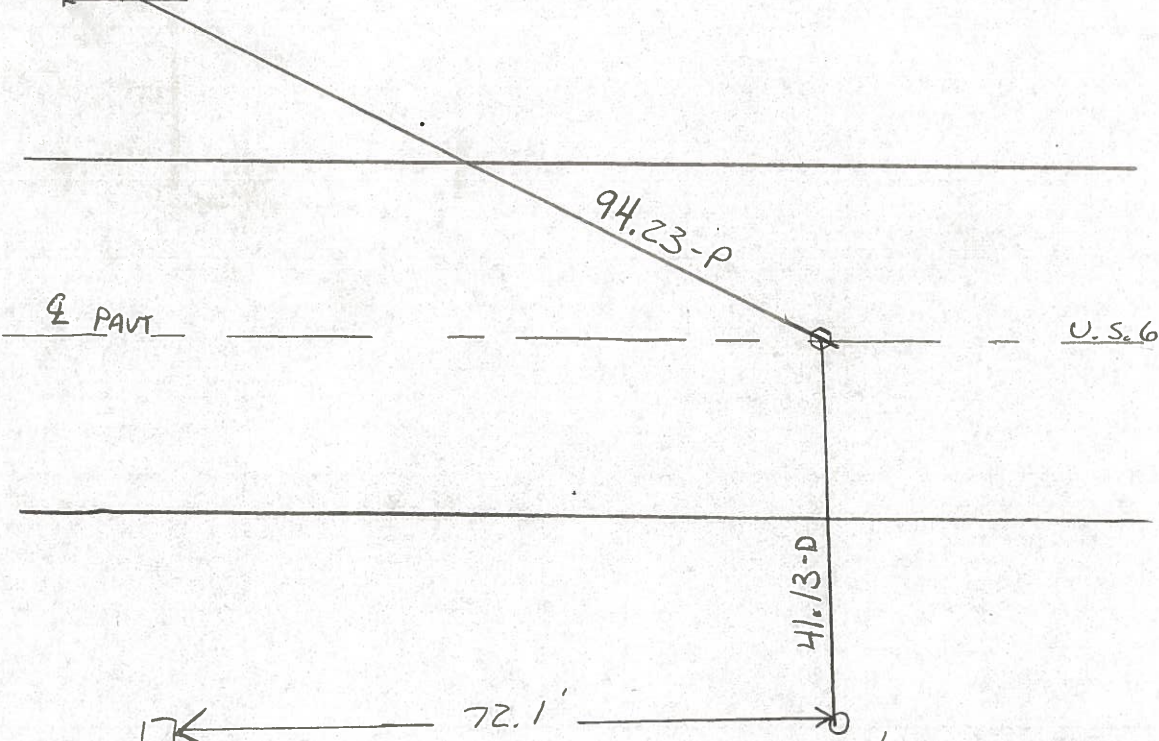
1/2 TO Rt EDGE PAVEMENT

S.L.M. 427455



8-D

"4" Top Chr.
S. PARAPET of C.B.



R.R. TIE
Fence Post
(Not Usable)

3/8" IRON Rod
Flush w/ GROUND

County Williams S.R. U.S. 6

Date 7-21-81

Township Center

Weather cloudy

Section 29

Temp. +70°

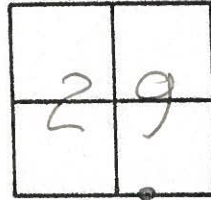
T6N, R2E

Personnel HOFFMAN

Loehrke

Householder

8-D



Fd. P.K. NAIL 1" below surface

PROJECT STA ± 427 + 50

10.9' to N.E.P.

SET SMALL R.R. SPK.

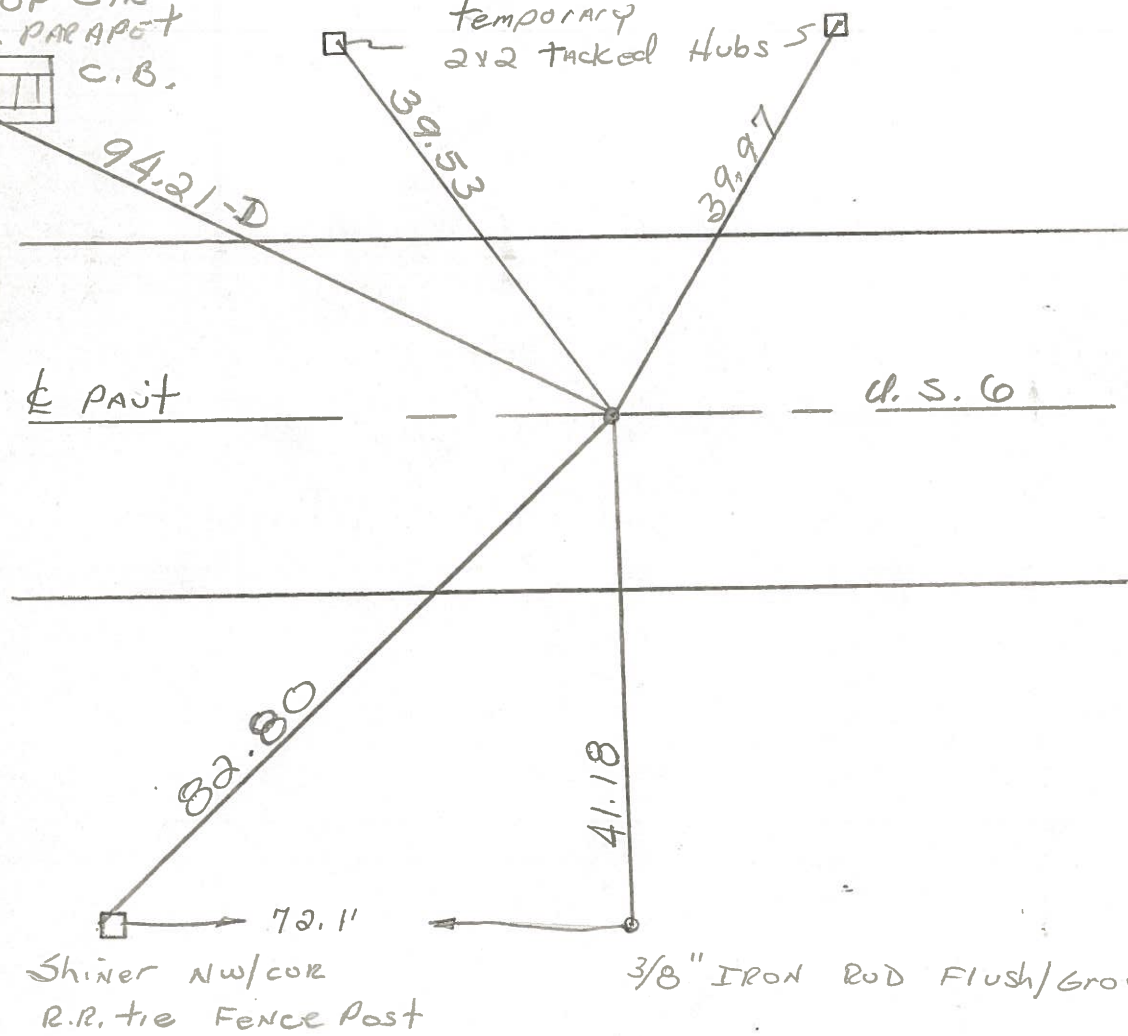
10.9' to S.E.P.

11-6-81 SWH

"+" TOP CTR
S. PARAPET
C.B.



temporary
2x2 tacked Hubs 5



P. C. STA. 251 + 14.72 ~ REC.

PERSONNEL TITLE PERSONNEL TITLE

Red Beach
W. Knape

COUNTY Williams DATE JAN 1976

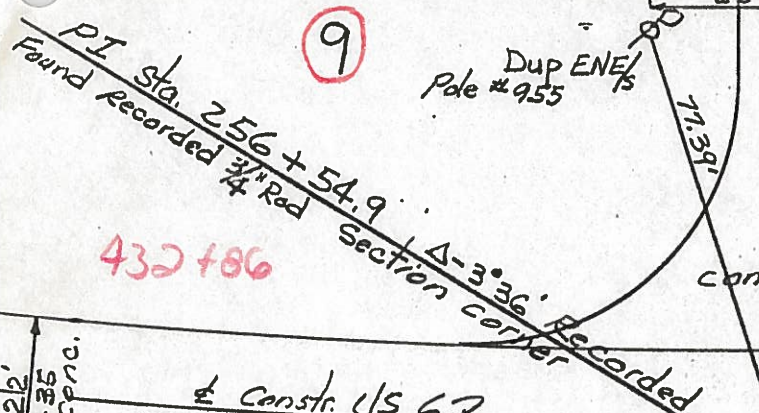
S. R. US 6 WEATHER

SEC. CENTER TWP TEMP

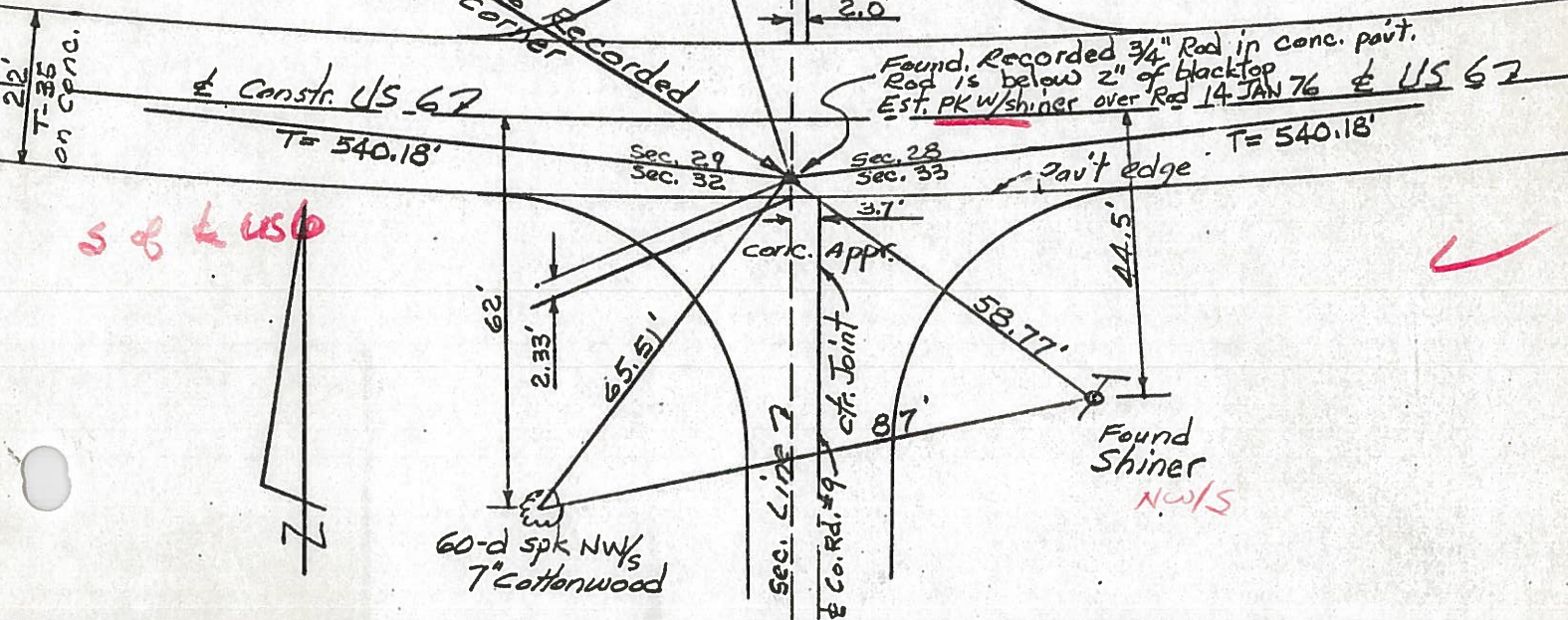
DESCRIPTION CONTROL POINTS

JOB NO.

CURVE DATA
 $\Delta - 3^{\circ} 36'$ Lt. Recorded
 $D - 0^{\circ} 20'$
 $T - 540.18'$
 $L - 1080.00'$
 $E - 8.49'$
 $R - 17188.74'$
 P.I. Sta. 256 + 54.9



432 + 86



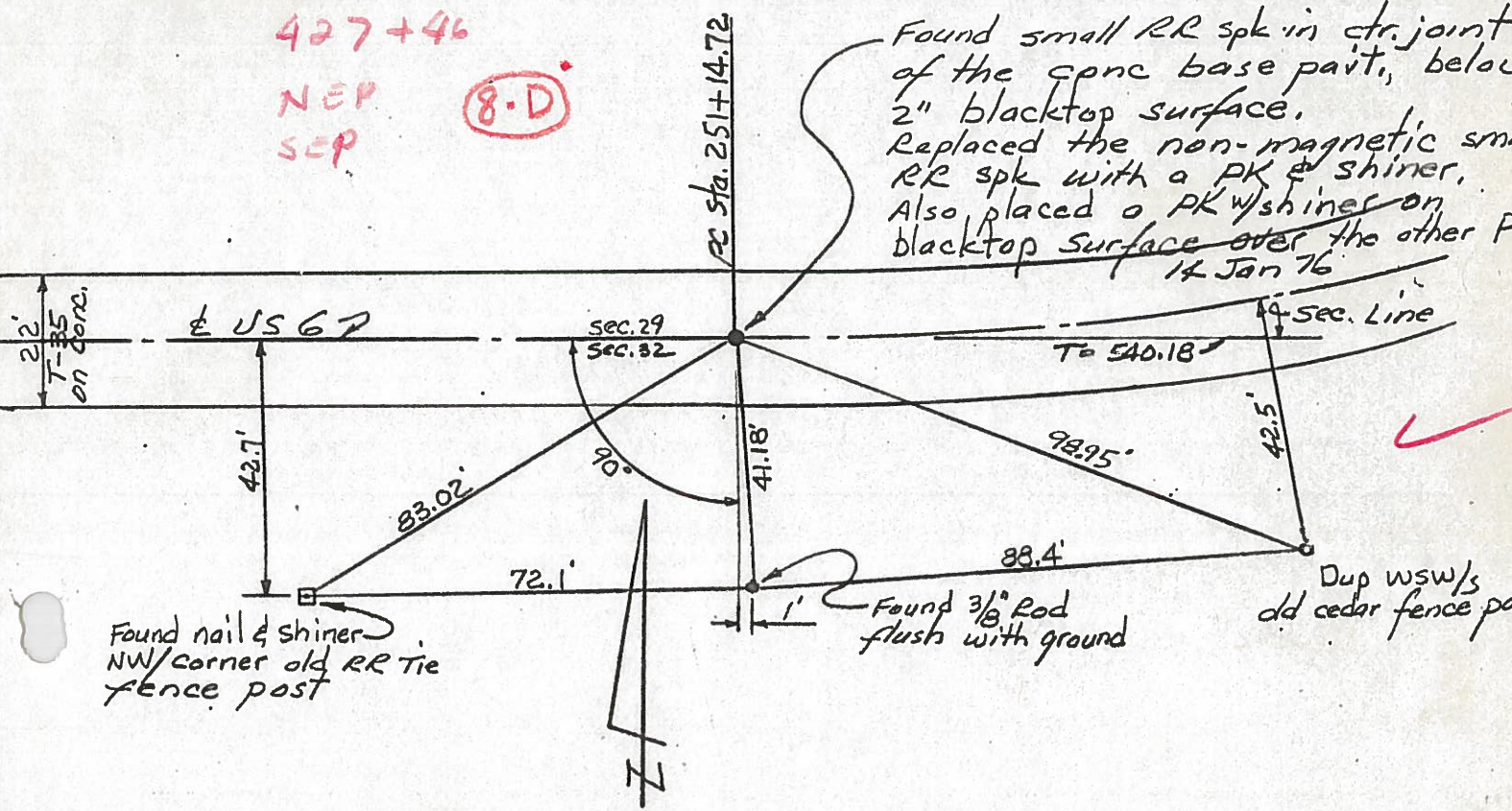
S & L US 67

427 + 46

NEP
SEP

(8-D)

Found small RR spk in ctr. joint of the conc base pavt., below 2" blacktop surface. Replaced the non-magnetic sma RR spk with a PK & shiner. Also placed a PK w/shiner on blacktop surface over the other PI 14 Jan 76



Found nail & shiner NW/corner old RR tie fence post

Found 3/8" Rod flush with ground

Dup wsw/s old cedar fence pos

PERSONNEL TITLE PERSONNEL TITLE

Lorays

COUNTY Wi.

DATE

9/4/58

Wise

S. R. 6

WEATHER

Fair

Krohn

Edgerton E. Corp. Lim.

75°

Pessefall

SEC. To Wt. in Rt. #3

TEMP.

DESCRIPTION

Witnesses to Control Points

JOB NO. _____

LEFT

CENTER LINE

RIGHT

