

O.D.O.T. DISTRICT 2 SURVEY OFFICE (USE ONLY)

PERSONNEL

REFERENCE NO. 9

SHEET 25 OF 41

NOTES RHOADES DATE 7/19/18
 H.C. O'DONNELL WEATHER CLOUDY
 R.C. HAGEMEYER TEMP. 68°
TRENKA

ROUTE US 6
 COUNTY WILLIAMS
 TOWNSHIP CENTER
 SECTION 29

DWG BY NIESE PID 102827

T 6 N R 2 E

TYPE MONUMENT P.K./WASHER

ON SURFACE - ~~BELOW~~ ON

OFFSET C PAVEMENT 8.4' ~~LT~~ : RT

- TO - EDGE PAVEMENT 3.0' W OF CR 9 C

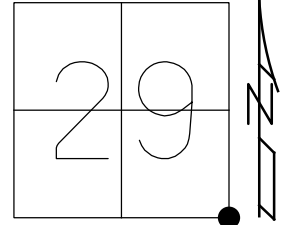
STATION: 432+82.88

HORZ.DATUM: NAD83 2011

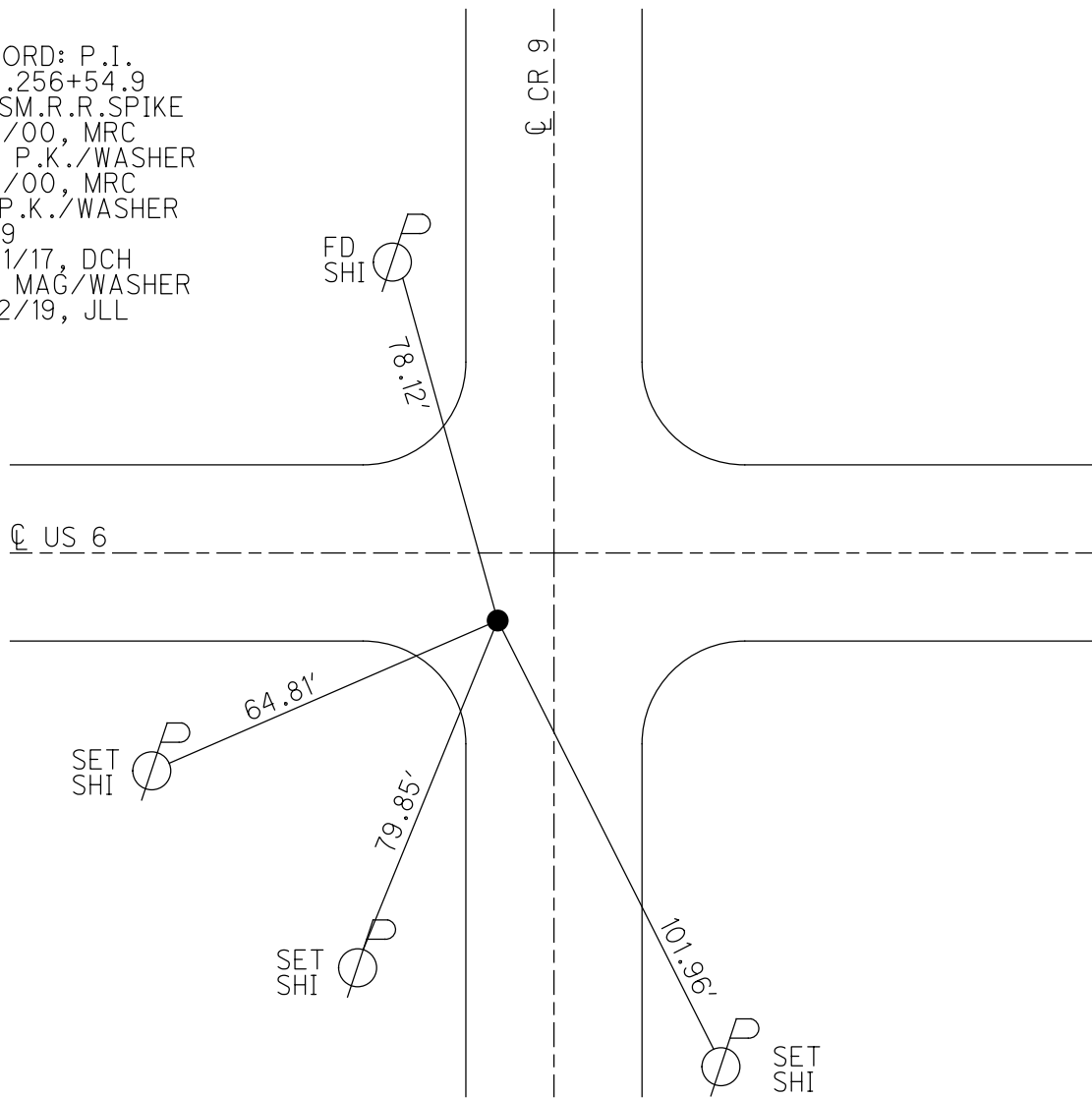
GEOID: NAVD88 2012A

GRID: NORTHING: 653825.852

EASTING: 1378805.130



RECORD: P.I.
 STA.256+54.9
 FD SM.R.R.SPIKE
 5/5/00, MRC
 SET P.K./WASHER
 8/3/00, MRC
 FD P.K./WASHER
 REF9
 3/31/17, DCH
 SET MAG/WASHER
 10/2/19, JLL



O.D.O.T. DISTRICT 2 SURVEY OFFICE

PERSONNEL _____

REFERENCE NO. 9

SHEET 28 OF 32

NOTES CANTERBURY

H.C. MOSEK

DATE 5-5-00

ROUTE US 6

R.C. BARNISEL II

WEATHER cloudy

COUNTY WILLIAMS

TEMP. +75°

TOWNSHIP CENTER

SECTION 29

T6 N R 2 E

TYPE MONUMENT Sm RR Spk

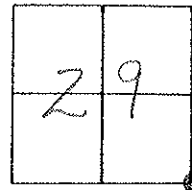
ON SURFACE - BELOW yes

LEFT - ☉ PAV'T. - RIGHT 8.4'

— TO — EDGE PAVEMENT

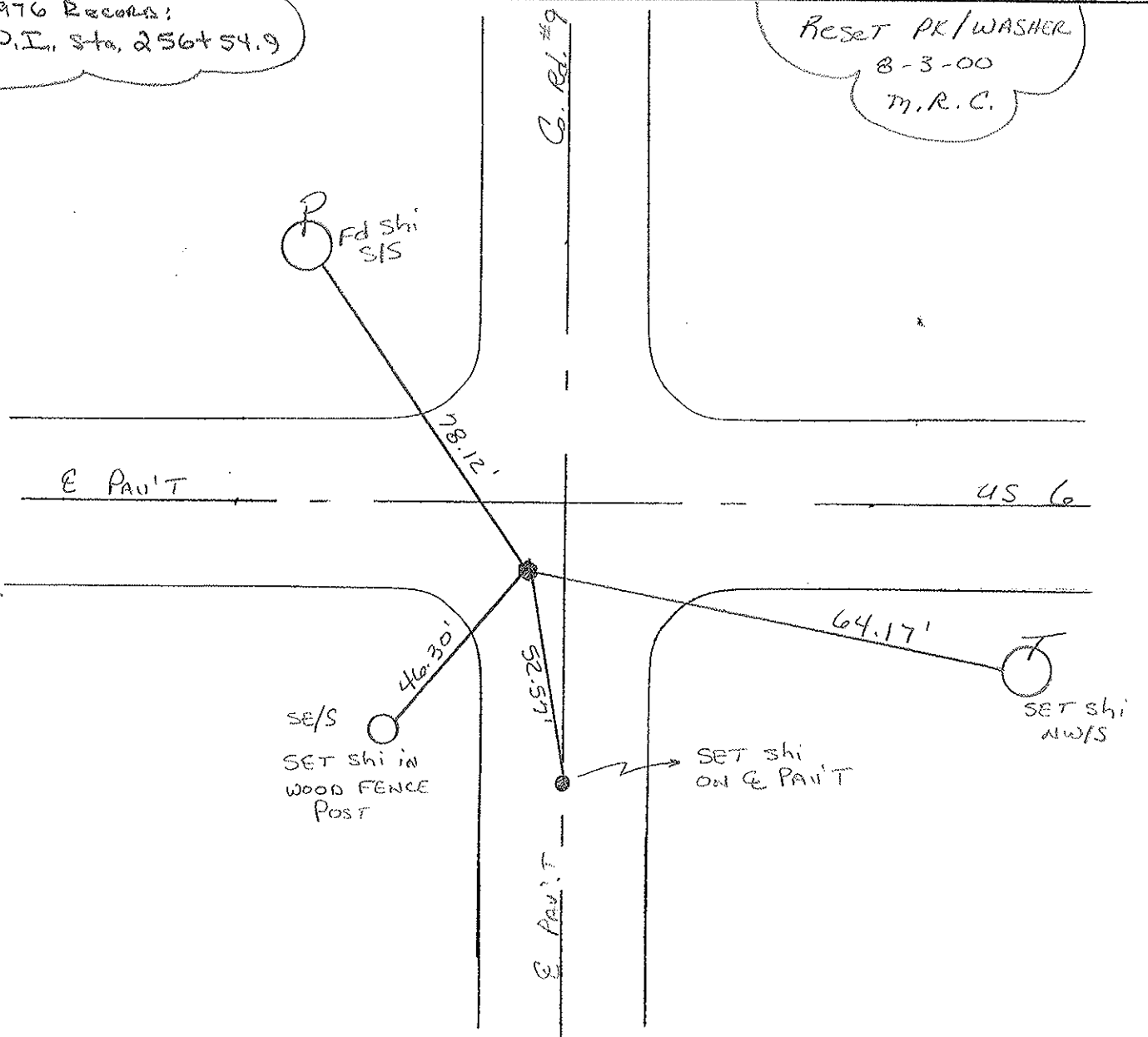
S.L.M. 432+96

3.0' WEST OF Co. Rd



1976 Records:
P.I. sta. 256+54.9

Reset PK/WASHER
8-3-00
M.R.C.



O.D.O.T. DISTRICT 2 SURVEY OFFICE

PERSONNEL

REFERENCE NO. 9

SHEET 26 OF

NOTES LOEHRKE

H.C. REED

R.C. BARNHISEL

Hoffman

DATE 4-12-88

WEATHER CLEAR

TEMP. +65

ROUTE U.S.6

COUNTY Williams

TOWNSHIP CENTER

SECTION 28-29-32-33

T & NR 2 E

TYPE MONUMENT Reset Sm. RR Spike 6-7-88

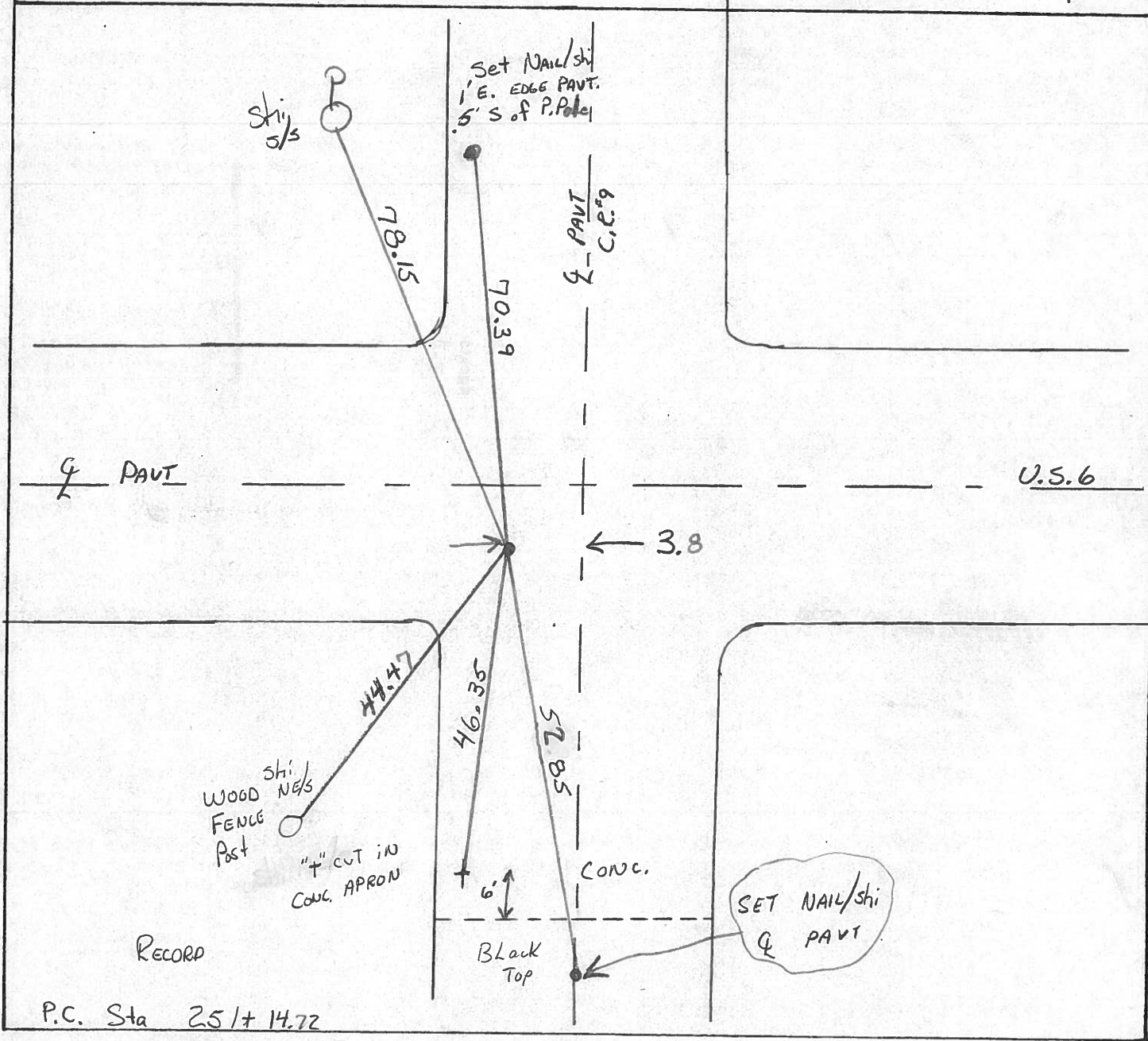
ON SURFACE - ~~BELOW~~

~~LEFT~~ - Q PAV'T. - RIGHT 8.8' / 3.8 w of Q C.R. 9

 TO EDGE PAVEMENT

S.L.M. H32 + 96

29	28
32	33



RECORD

P.C. Sta 25 + 14.72

County Williams S.R. U.S.G

Date 7-21-81

Township Center

Weather cloudy

Section 28, 29, 32, 33

Temp. +70°

T6N, R2E

Personnel Hoffman

29	28
32	33



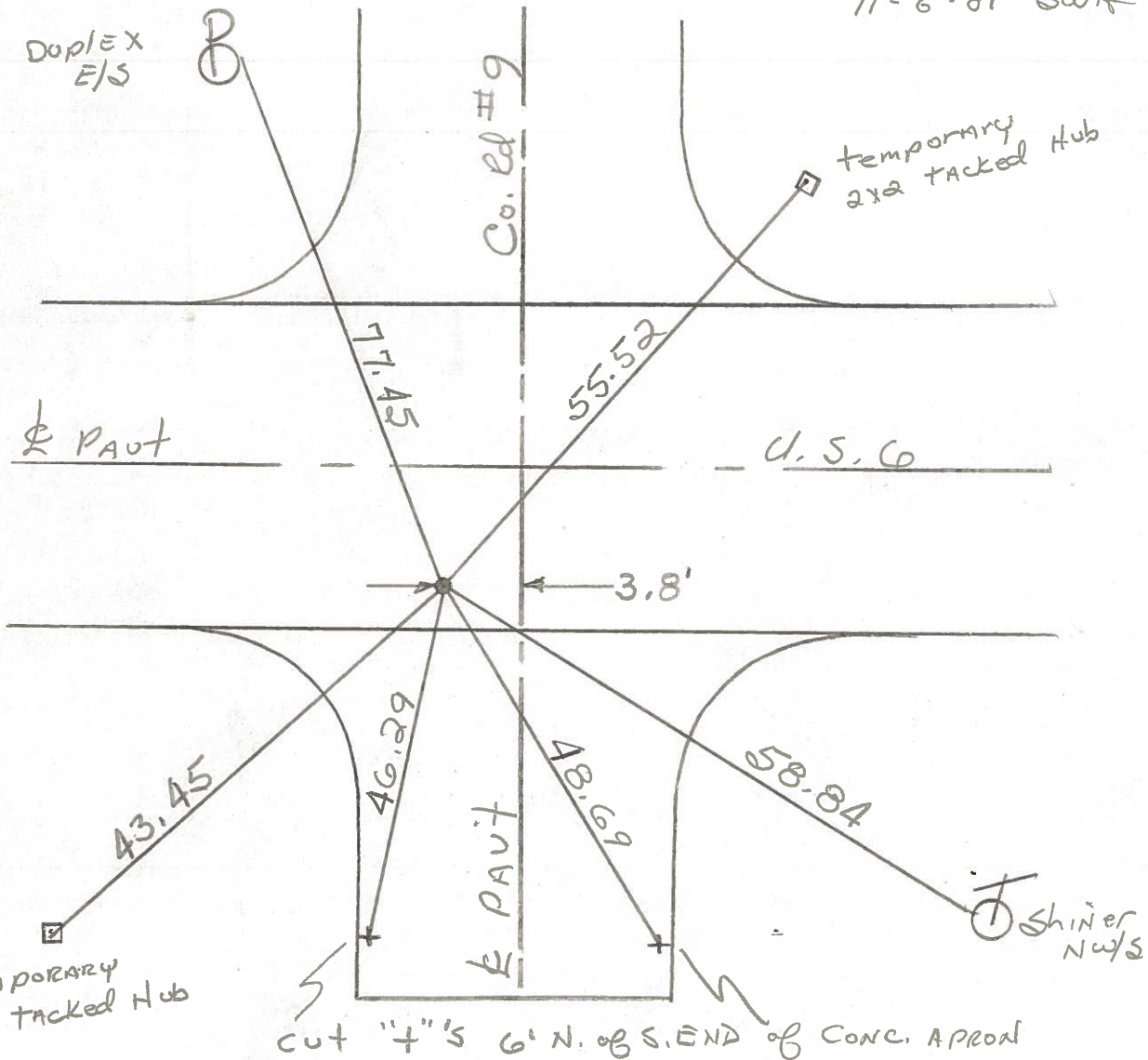
9

Loehrke
Householder

Fd. 3/4" Rod 2" Below Surface
 8.3' S. of ϕ PAUT U.S.G
 2.2' S. to N. Edge CONC APRON

PROJECT STA 432 + 88

SET SMALL R.R. SPK.
 1/2" BELOW SURFACE
 11-6-81 SWH



P.I. STA. 256 + 54.9 - REC

PERSONNEL TITLE PERSONNEL TITLE

Red Beach
W. Knappe

COUNTY Williams DATE JAN 1976

S. R. US 6 WEATHER

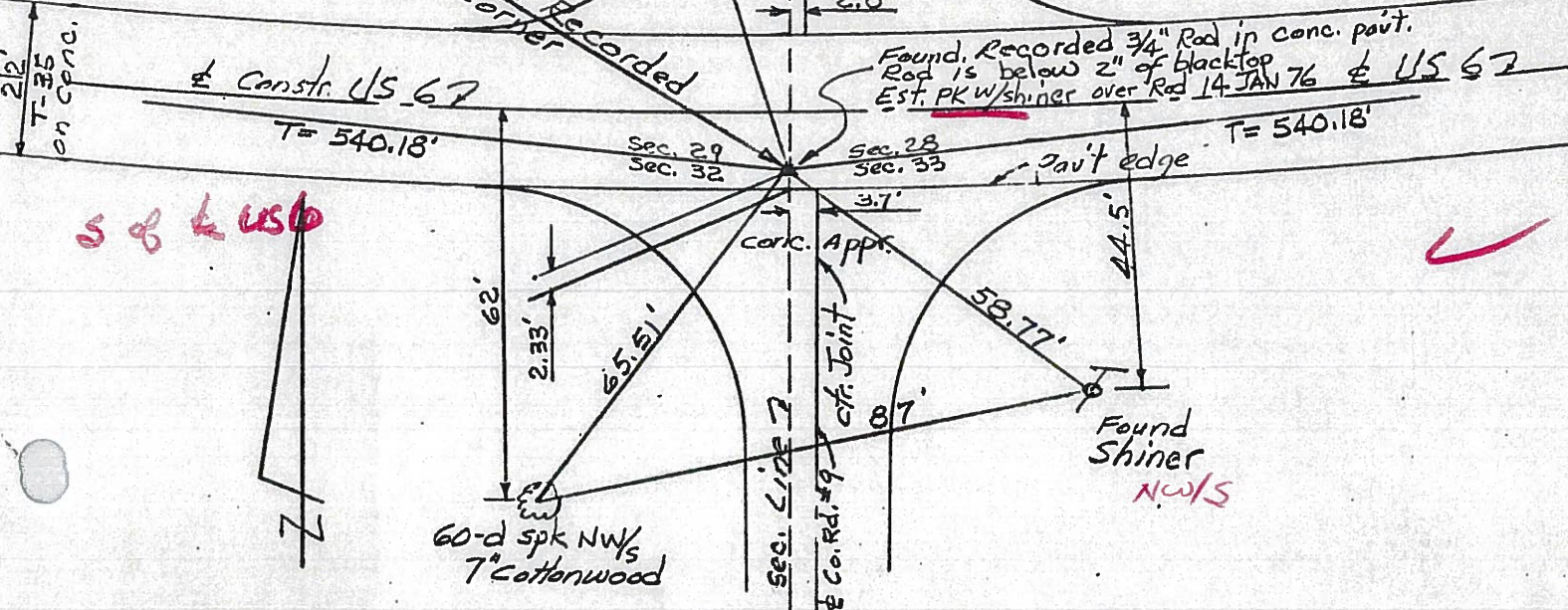
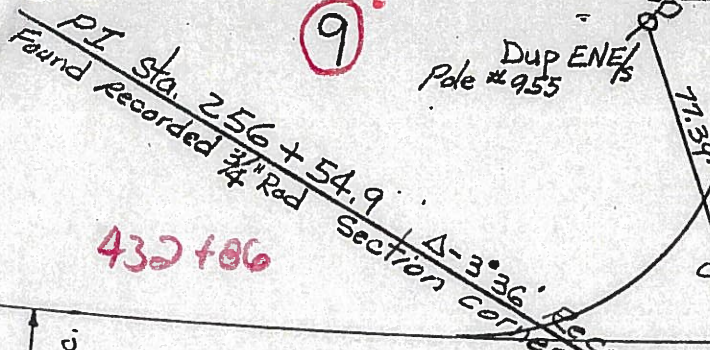
SEC. CENTER TWP TEMP

DESCRIPTION CONTROL POINTS

JOB NO.

CURVE DATA

Δ - $3^{\circ} 36'$ Lt. Recorded
D - $0^{\circ} 20'$
T - $540.18'$
L - $1080.00'$
E - $8.49'$
R - $17188.74'$
P.I. Sta. $256 + 54.9$

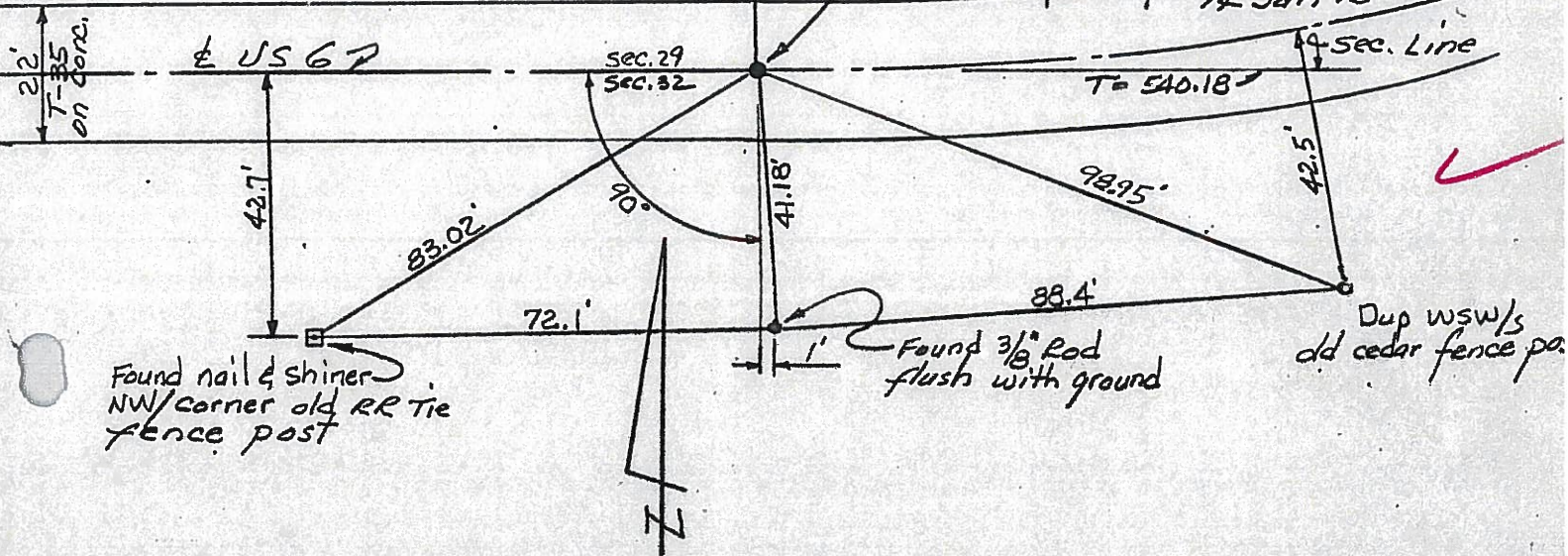


427+46

NEP
SEP

(8-D)

Found small RR spk in ctr. joint of the conc base pavt., below 2" blacktop surface. Replaced the non-magnetic sma RR spk with a PK & shiner. Also placed a PK w/shiner on blacktop surface over the other P 14 Jan 76



PERSONNEL	TITLE	PERSONNEL	TITLE	COUNTY	DATE
Louys				Wi.	9/4/58
Wise					
Krohn				S. R. 6	WEATHER Fair
Pessefall				Edgerton E. Corp. Lim.	TEMP. 75°
DESCRIPTION				SEC. TO INT. IN RT. #2	JOB NO.
Witnesses to Control Points					

