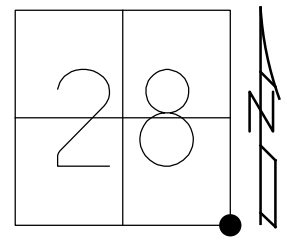


O.D.O.T. DISTRICT 2 SURVEY OFFICE (USE ONLY)

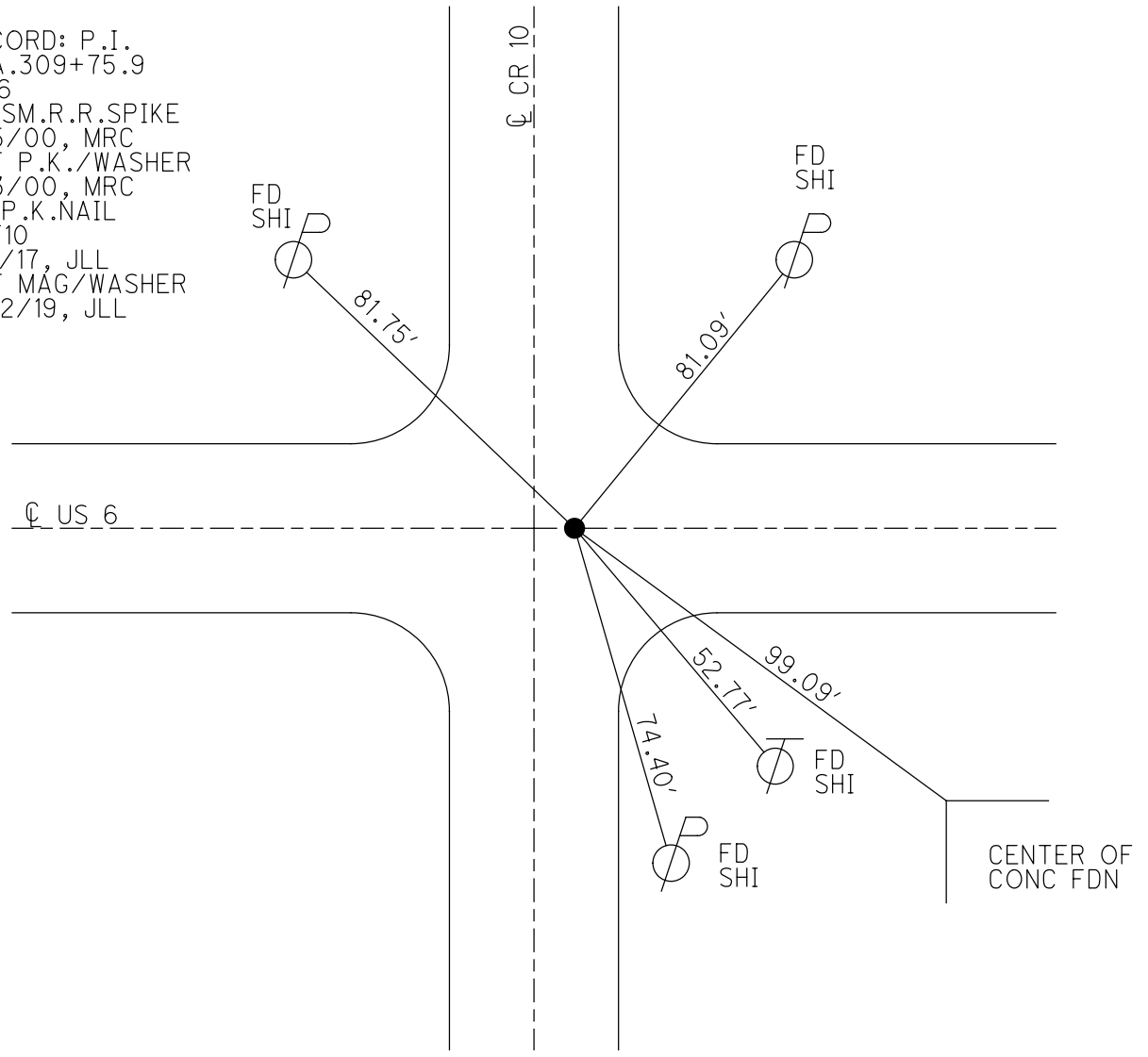
PERSONNEL \_\_\_\_\_ REFERENCE NO. 10 SHEET 29 OF 41  
 NOTES RHOADES DATE 7/19/18 ROUTE US 6  
 H.C. O'DONNELL WEATHER CLOUDY COUNTY WILLIAMS  
 R.C. HAGEMEYER TEMP. 68° TOWNSHIP CENTER  
 \_\_\_\_\_ TRENKA SECTION 28  
 DWG BY NIESE PID 102827 T 6 N R 2 E

TYPE MONUMENT P.K.NAIL  
 ON SURFACE - ~~BELOW~~ ON  
 OFFSET  $\varnothing$  PAVEMENT ON LT : RT  
- TO - EDGE PAVEMENT 4' E OF  $\varnothing$  N  
 STATION: 486+05.36



HORZ.DATUM: NAD83 2011 GEOID: NAVD88 2012A  
 GRID: NORTHING: 653696.598 EASTING: 1384125.995

RECORD: P.I.  
 STA.309+75.9  
 1976  
 FD SM.R.R.SPIKE  
 5/5/00, MRC  
 SET P.K./WASHER  
 8/3/00, MRC  
 FD P.K.NAIL  
 REF10  
 5/1/17, JLL  
 SET MAG/WASHER  
 10/2/19, JLL



# O.D.O.T. DISTRICT 2 SURVEY OFFICE

PERSONNEL \_\_\_\_\_

REFERENCE NO. 10

SHEET 31 OF 32

NOTES CANTERBURY

H.C. MOSEK

DATE 5-5-00

ROUTE US 6

R.C. BARNHISEL III

WEATHER cloudy

COUNTY WILLIAMS

TEMP. +78°

TOWNSHIP CENTER

SECTION 28

T. 6 N. R 2 E

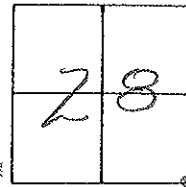
TYPE MONUMENT Sm RR Spk

ON SURFACE - BELOW yes

LEFT - 0 PAU'T. - RIGHT 0.4'

— TO — EDGE PAVEMENT

S.L.M. 486+20 ON E South, 4' E. OF E NORTH

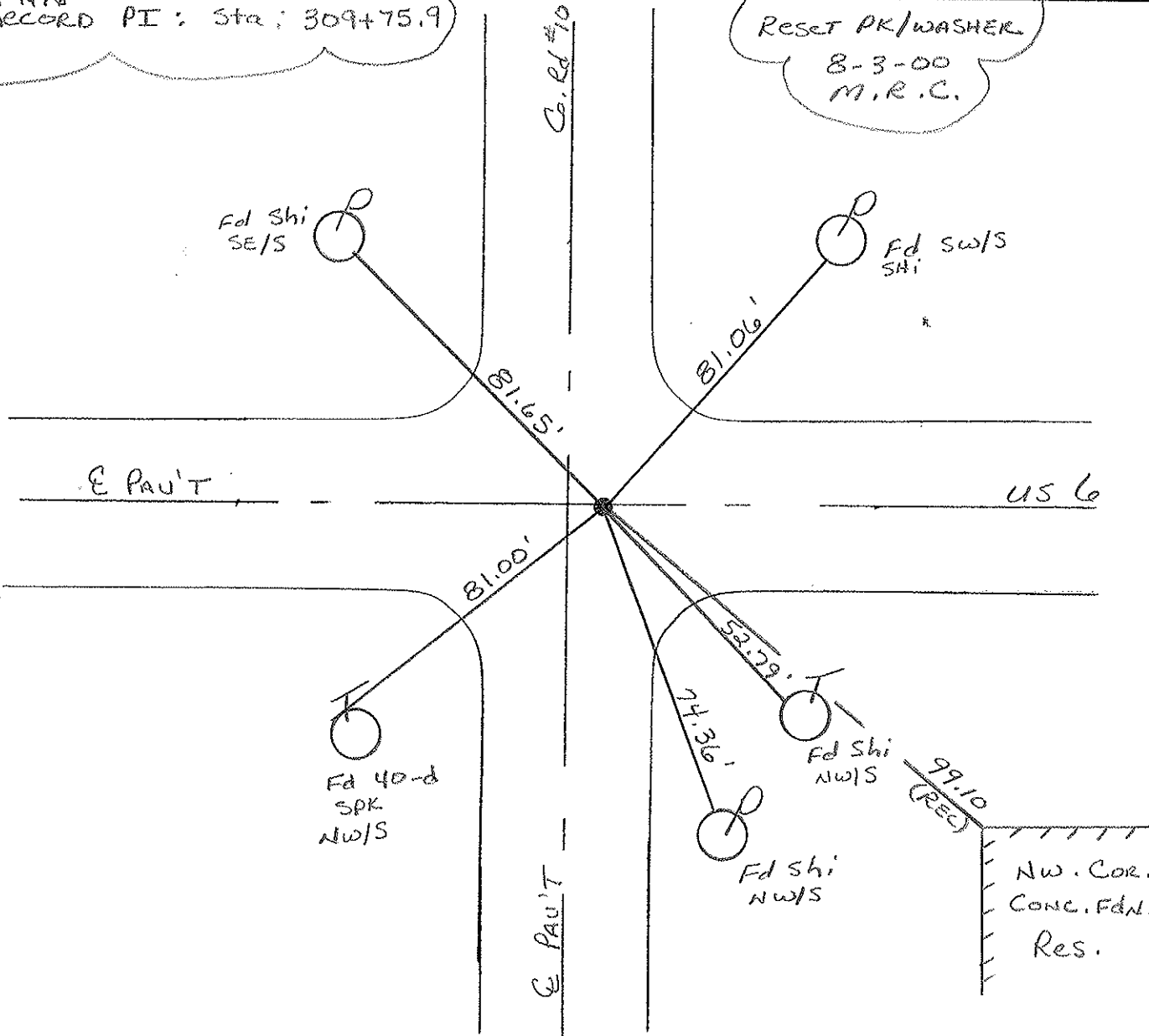


<sup>1976</sup> Record PI: Sta: 309+75.9

Reset PK/WASHER  
8-3-00  
M.R.C.

Co. Rd #10

E PAU'T



# O.D.O.T. DISTRICT 2 SURVEY OFFICE

PERSONNEL

REFERENCE NO. 70

SHEET 29 OF       

NOTES LOEHRKE

H.C. REED

R.C. BARNHISEL

Hoffman

DATE 4-13-88

WEATHER CLEAR

TEMP. +50

ROUTE U.S. 6

COUNTY Williams

TOWNSHIP CENTER

SECTION 27, 28, 33, 34

T        R       

TYPE MONUMENT Reset Sm. R.R. Spike 6-7-88

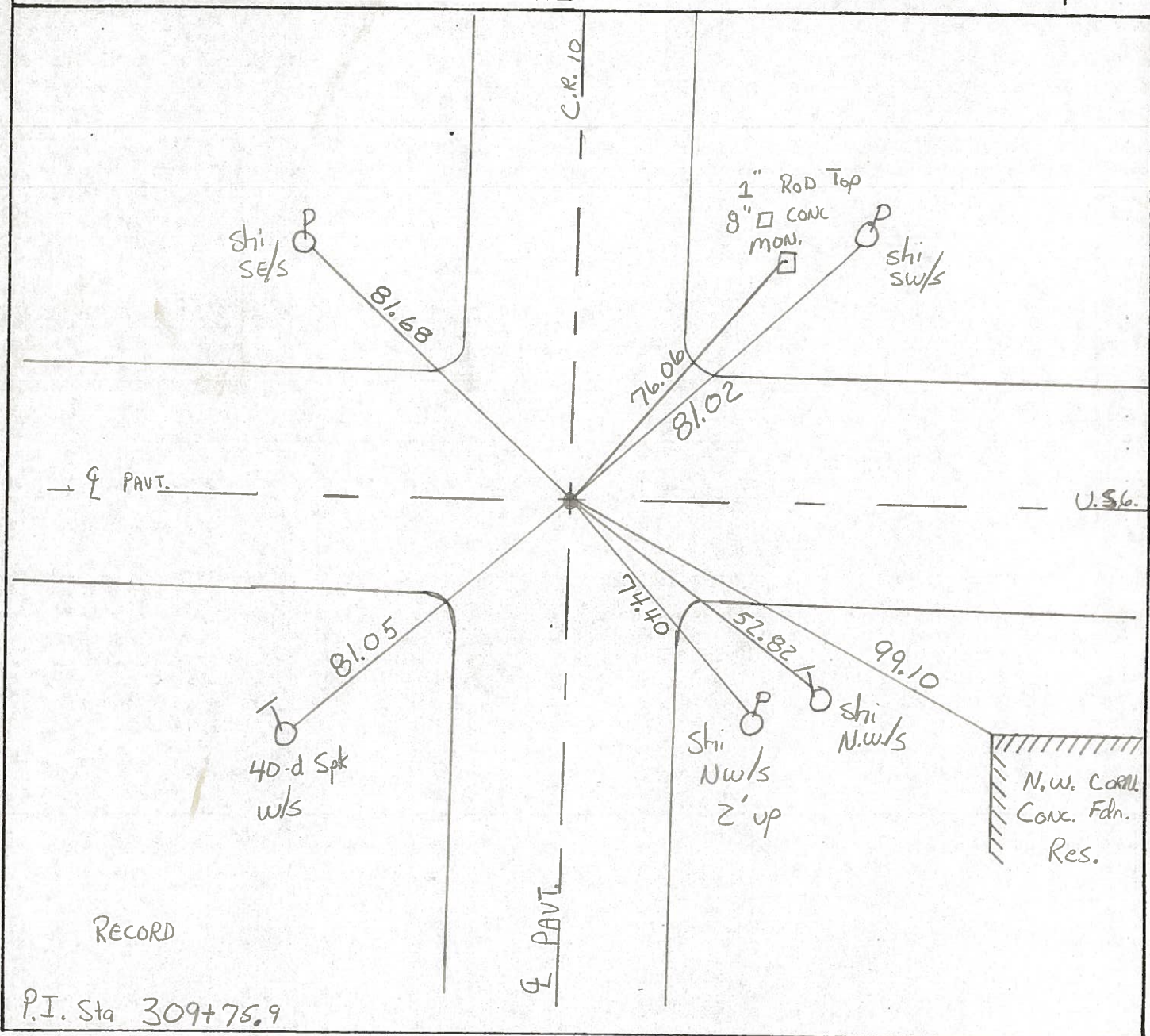
ON SURFACE - BELOW

~~LEFT~~ - C PAV'T. - RIGHT BOTH PAVT

       TO        EDGE PAVEMENT

S.L.M. 486 + 20

28	27
33	34



County Williams S.R. U.S. Co

Date 7-21-81

Township Center

Weather P. Cloudy

Section 27, 28, 33, 34

Temp. +75°

T6N, R2E

Personnel HOFFMAN

28	27
33	34



Loehrke

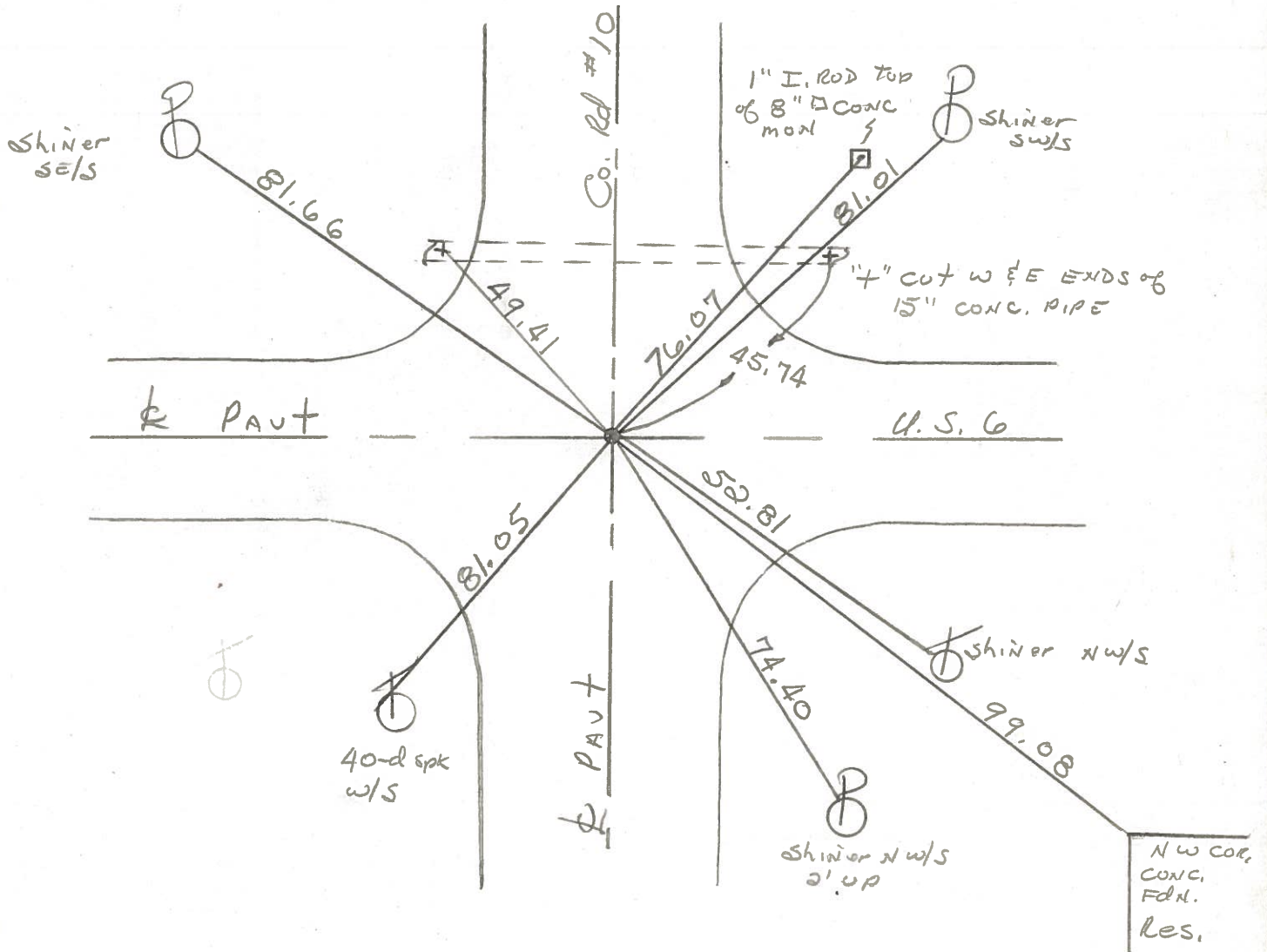
Householder

#10

Fd. 3/4" Iron Rod 2" below surface  
@ ctr. of PAUTS - Both Roads.

PROJECT STA ± 486+12

SET SMALL R.R. SPK.  
11-10-81 SWH

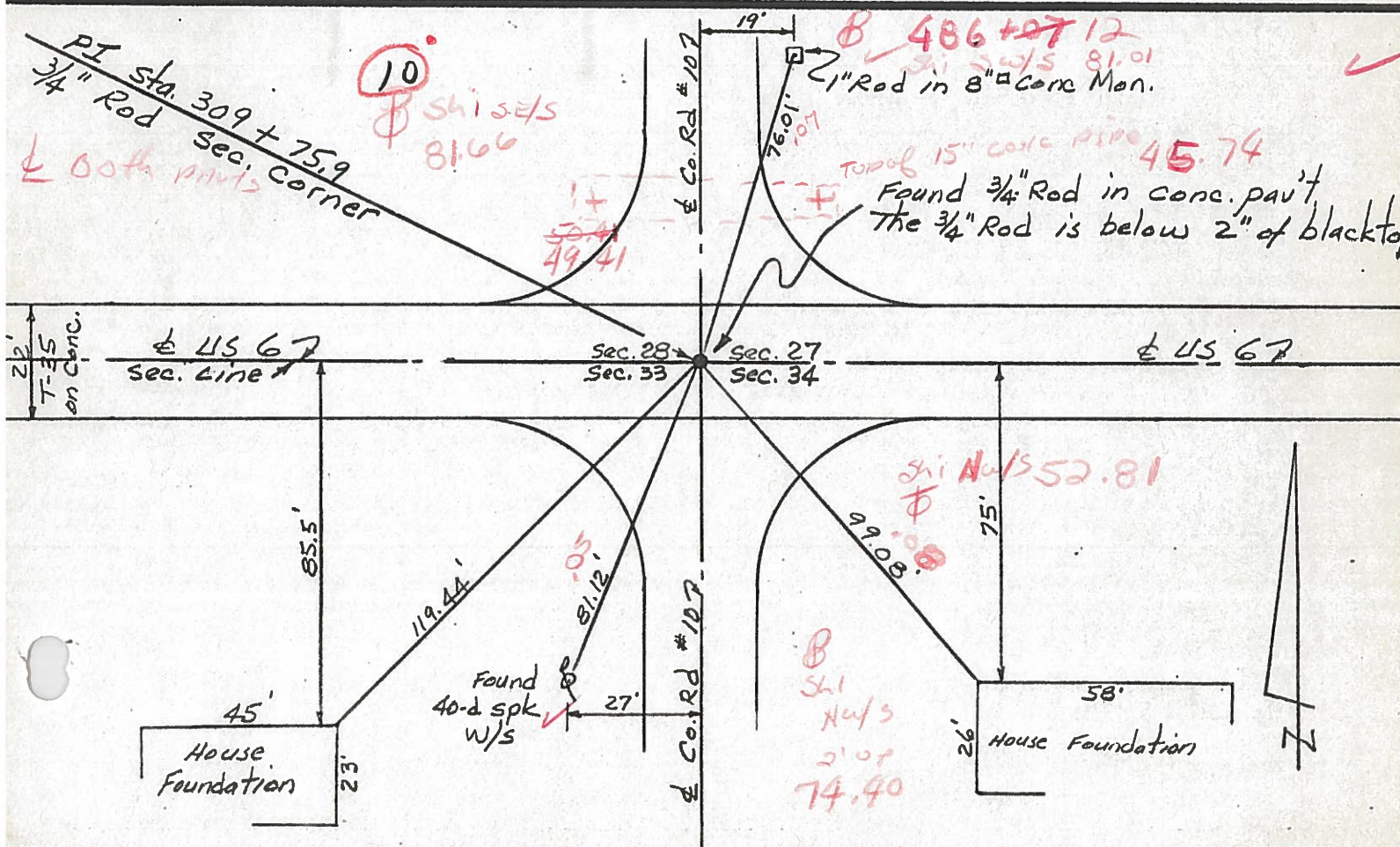
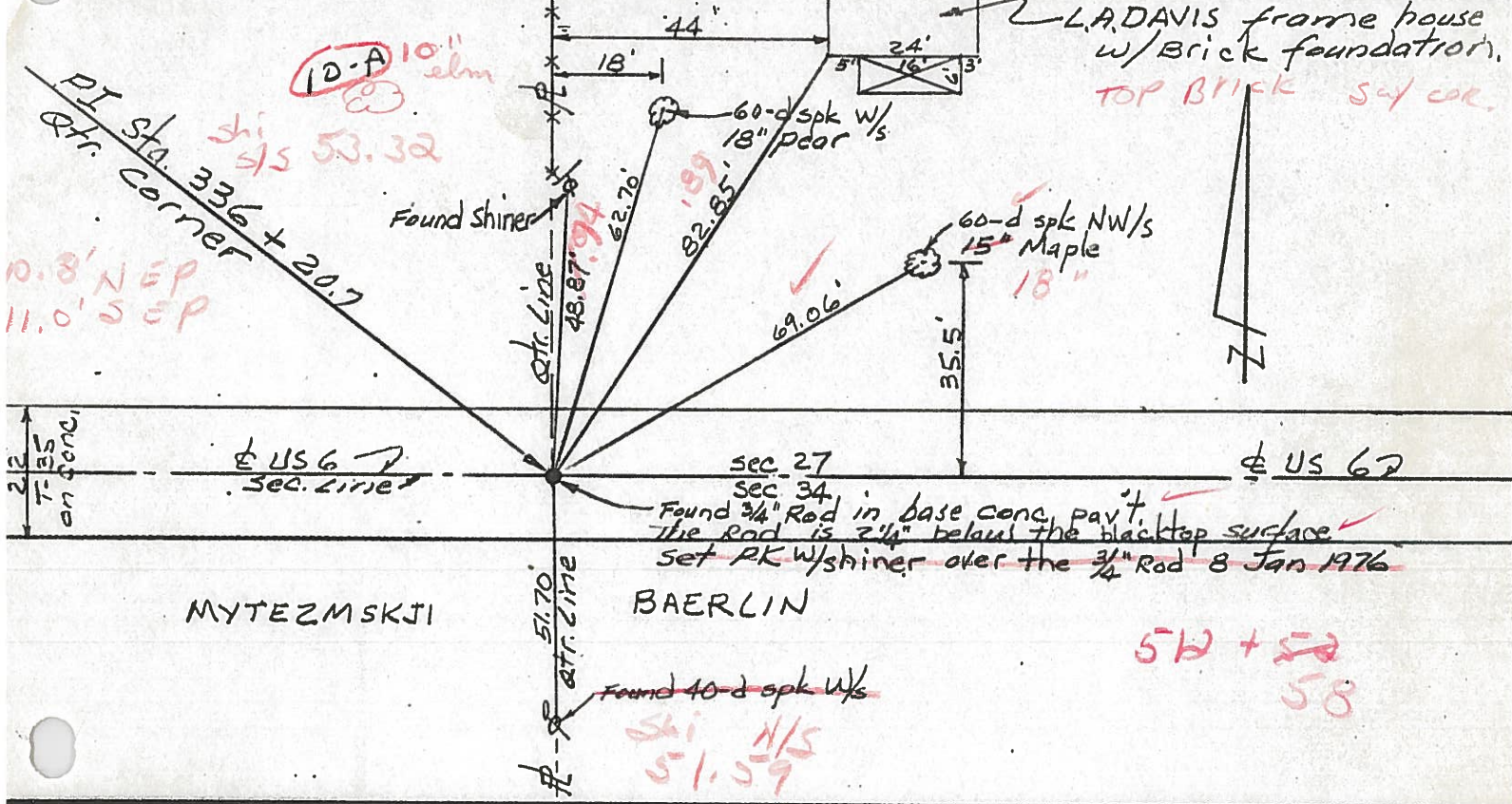


P.I. STA. 309 + 75.9 ~ REC.



PERSONNEL	TITLE	PERSONNEL	TITLE	COUNTY	DATE
Red Beach				Williams	Jan 1976
W. Krape				US 6	WEATHER
				SEC. CENTER TWP	TEMP

DESCRIPTION CONTROL POINTS JOB NO.





PERSONNEL	TITLE	PERSONNEL	TITLE
Lovys			
Wise			
Krohn			
Pessefall			

DESCRIPTION: Witnesses to Control Points

COUNTY Wi. DATE 9/4/58  
 S. R. 6 WEATHER Fair  
Edgerton E. Corp. Lim. TEMP. 75°  
 SECTION INT. IN RT. #2  
 JOB NO. \_\_\_\_\_

