

O.D.O.T. DISTRICT 2 SURVEY OFFICE (USE ONLY)

PERSONNEL

REFERENCE NO. 10 A

SHEET 30 OF 41

NOTES RHOADES

DATE 7/19/18

ROUTE US 6

H.C. O'DONNELL

WEATHER CLOUDY

COUNTY WILLIAMS

R.C. HAGEMeyer

TEMP. 68°

TOWNSHIP CENTER

TRENKA

SECTION 27

DWG BY NIESE PID 102827

T 6 N R 2 E

TYPE MONUMENT MAG NAIL

ON SURFACE - ~~BELOW~~ ON

OFFSET 0.2' LT : ~~RT~~

12.1' TO LT EDGE PAVEMENT

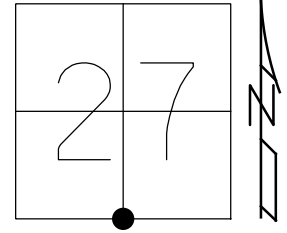
STATION: 512+51.21

HORZ. DATUM: NAD83 2011

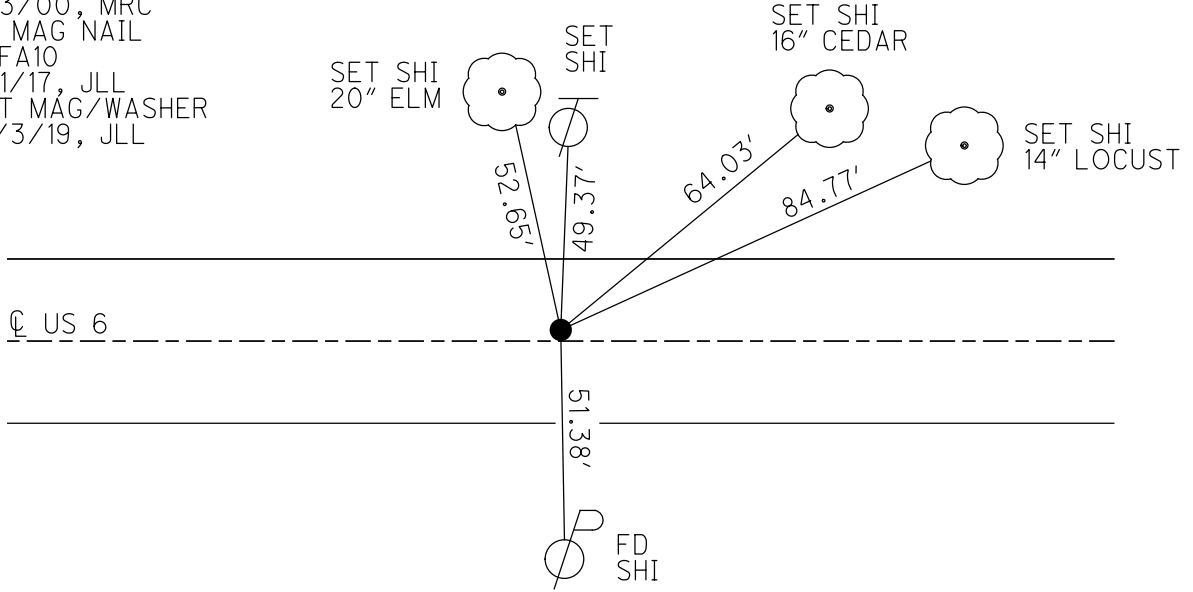
GEOID: NAVD88 2012A

GRID: NORTHING: 653644.799

EASTING: 1386771.151



RECORD:
 STA. 336+20.70
 1976
 FD SM.R.R.SPIKE
 5/5/00, MRC
 SET P.K./WASHER
 8/3/00, MRC
 FD MAG NAIL
 REFA10
 5/1/17, JLL
 SET MAG/WASHER
 10/3/19, JLL



O.D.O.T. DISTRICT 2 SURVEY OFFICE

PERSONNEL

REFERENCE NO. 10-A

SHEET 32 OF 32

NOTES CANTERBURY

H.C. MOSEK

DATE 5-5-00

ROUTE US 6

R.C. BARNHISEL III

WEATHER cloudy

COUNTY WILLIAMS

TEMP. +78°

TOWNSHIP CENTER

SECTION 27

T 6 N R 2 E

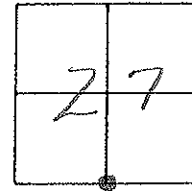
TYPE MONUMENT Sm RR Spk

ON SURFACE - ~~BELOW~~ yes

LEFT - ~~CL~~ PAV'T. - RIGHT 0.2'

12.1' TO LT EDGE PAVEMENT

S.L.M. 512+65

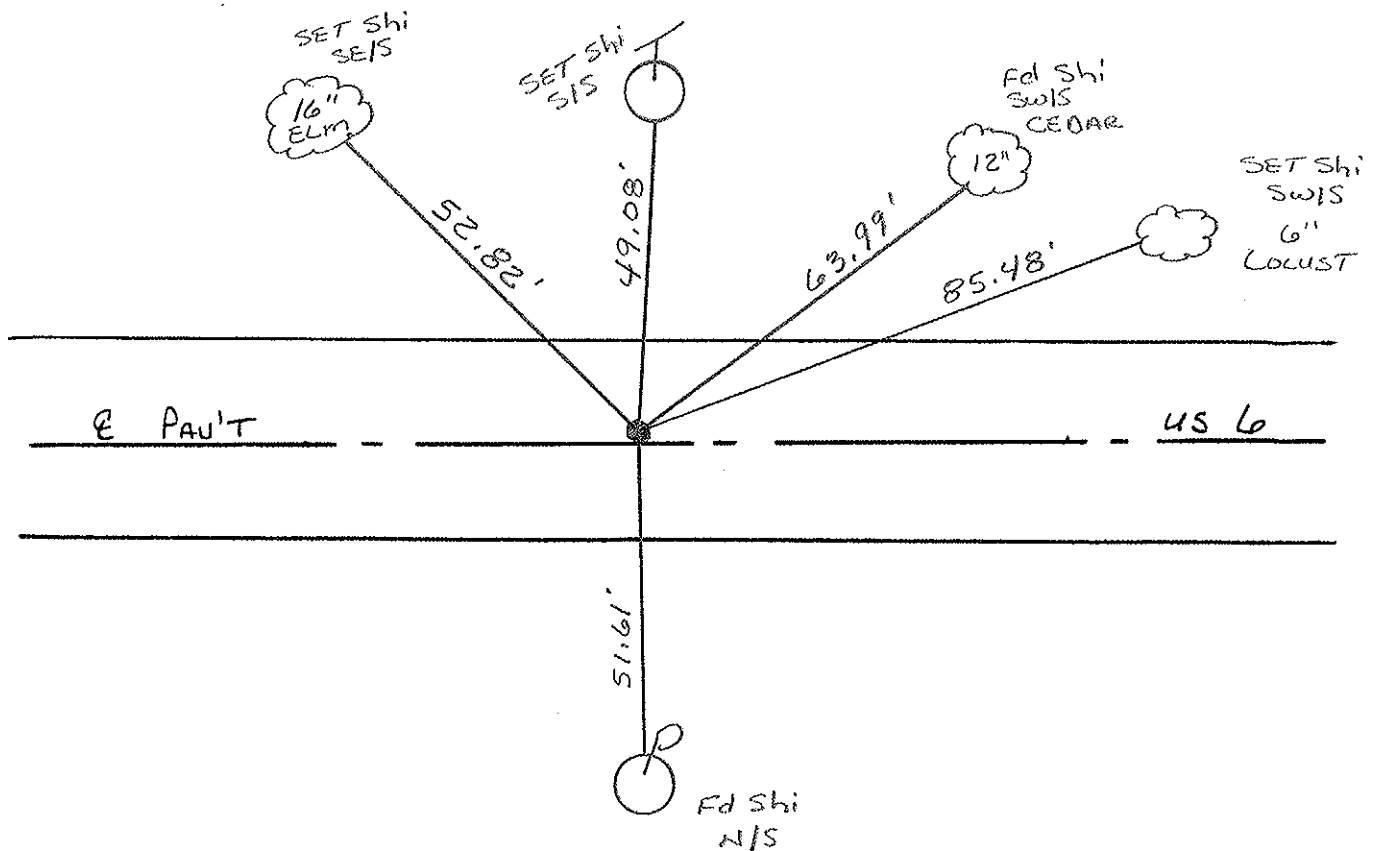


¹⁹⁷⁶ Record: PLAN sta: 336+20.70

RESET PK/WASHER

8-3-00

M.R.C.



O.D.O.T. DISTRICT 2 SURVEY OFFICE

PERSONNEL

REFERENCE NO. 10-A

SHEET 1 OF 12

NOTES Barnhiser

H.C. Canterbury

DATE 11-17-95

ROUTE U.S. 6

R.G. Cordes

WEATHER SNOW

COUNTY Williams

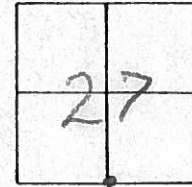
TEMP. 32° F

TOWNSHIP CENTER

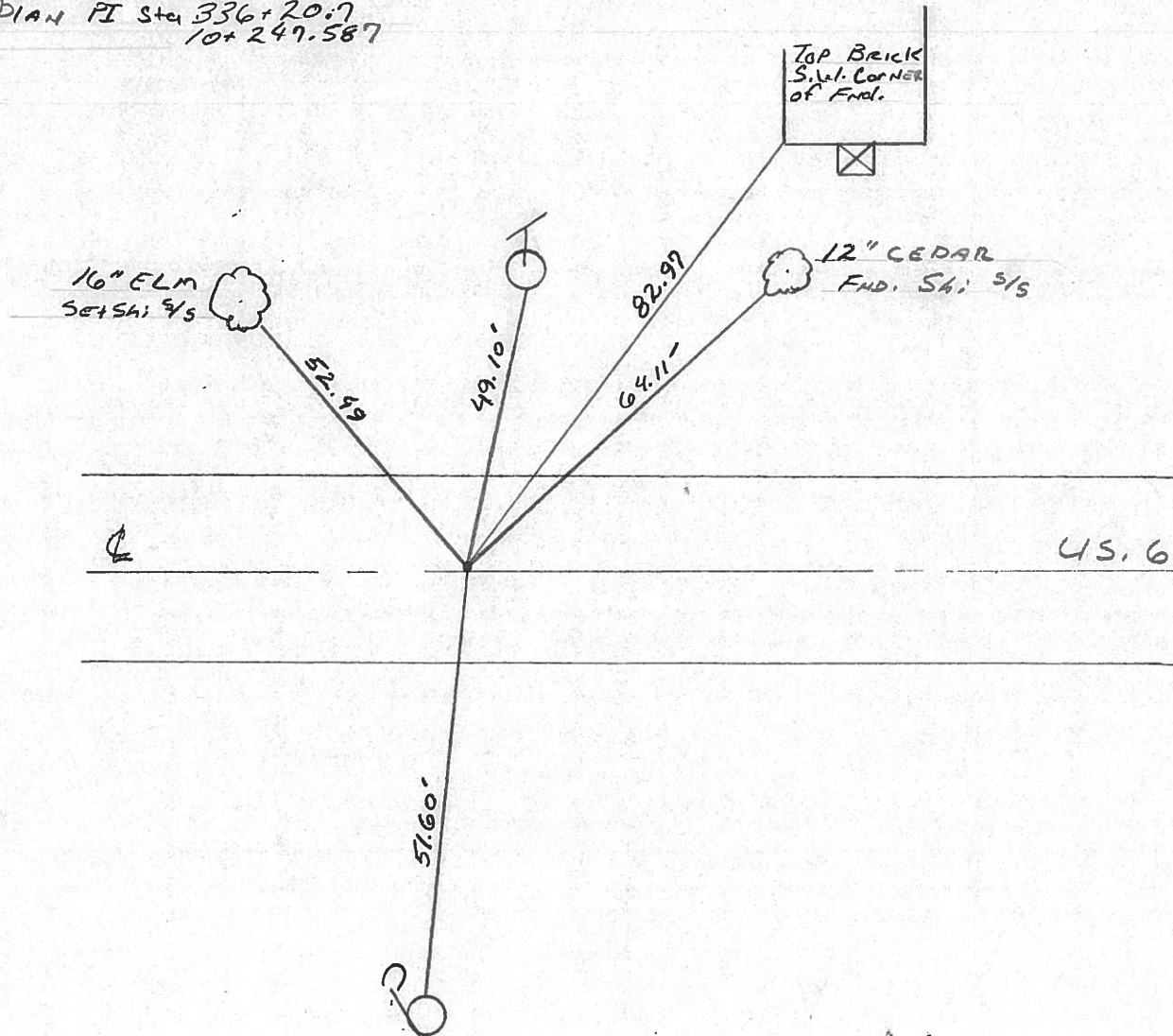
SECTION 27

T6 NR 2 E

TYPE MONUMENT Sm. RR spike
 ON SURFACE - ~~BELOW~~ ON SURFACE
 LEFT - CL PAV'T. - RIGHT 0.2' LT
12.0 TO RT EDGE PAVEMENT
 S.L.M. 512.67



Records:
 PLAN PI Sta 336+20.7
 10+247.587



Resurfaced 1998

O.D.O.T. DISTRICT 2 SURVEY OFFICE

PERSONNEL

REFERENCE NO. 10-A

SHEET 1 OF 11

NOTES BARNASEC

H.C. CANTERBURY

DATE 11-17-95

ROUTE U.S. 6

R.C. CORDS

WEATHER SNOW

COUNTY WILLIAMS

TEMP. +0° C

TOWNSHIP CENTER

SECTION 27

T6 N R 2 E

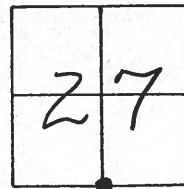
TYPE MONUMENT 5m RR Spk

ON SURFACE - ~~BELOW~~ yes

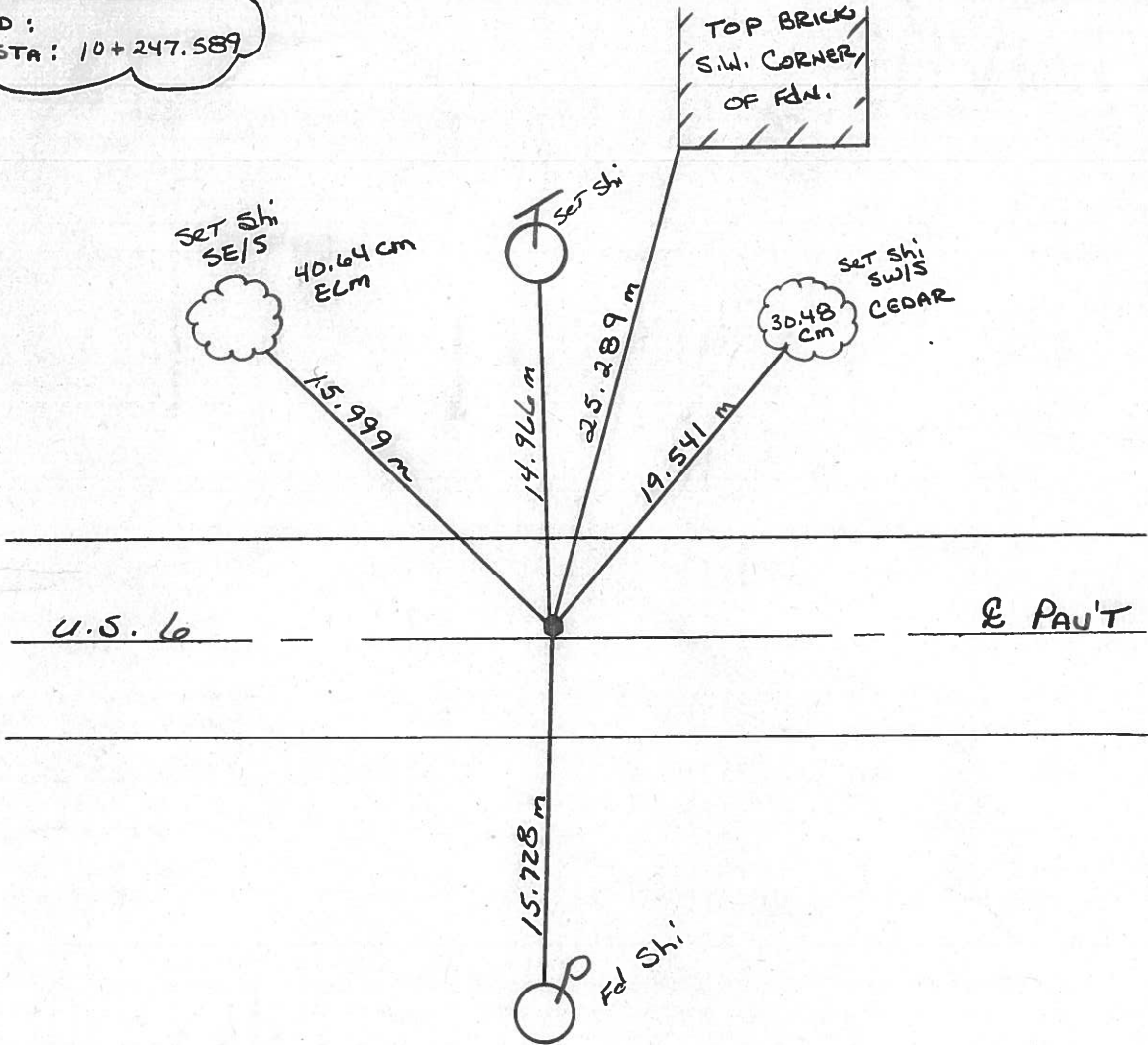
LEFT- & PAV'T. - ~~RIGHT~~ 6.35 cm

3.66 m TO LT EDGE PAVEMENT

S.L.M. 15+600.520



RECORD:
PLAN STA: 10+247.589



Resurfaced 1998

O.D.O.T. DISTRICT 2 SURVEY OFFICE

PERSONNEL

REFERENCE NO. 10 A

SHEET 30 OF

NOTES LOEHRKE

H.C. Reed

DATE 4-13-88

ROUTE U.S. 6

R.C. Barnhiser

WEATHER Clear

COUNTY Williams

Hoffman

TEMP. +50

TOWNSHIP Center

SECTION 27

T 6 N R 2 E

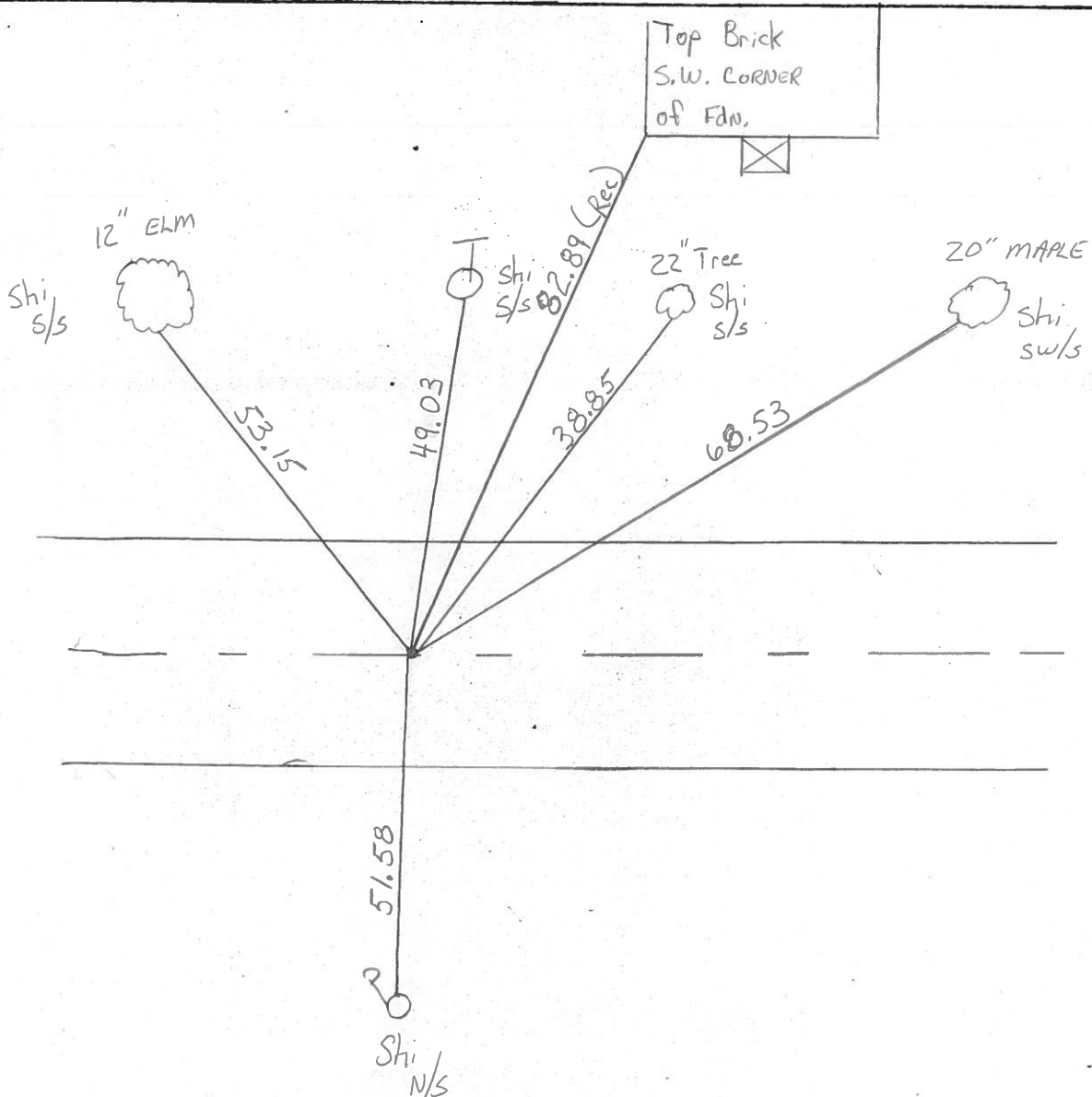
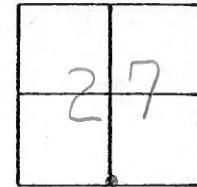
TYPE MONUMENT Sm. ^{Reset} R.P. Spike 6-7-88

ON SURFACE - BELOW

LEFT - 0 PAV'T. - RIGHT 0.2

11.3 TO Rt EDGE PAVEMENT

S.L.M. 512+67



RECORD

P.I. Sta 336+20.7

County Williams S.R. US 6

Date 7-22-81

Township Center

Weather Clear

Section 27

Temp. +65°

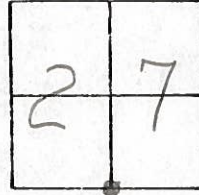
T6N, R2E

Personnel HOFFMAN

Loehrke

Householder

10-A



Fd. $\frac{3}{4}$ " Rod $2\frac{1}{4}$ " Below Surface

Project STA. $\pm 512 + 58$

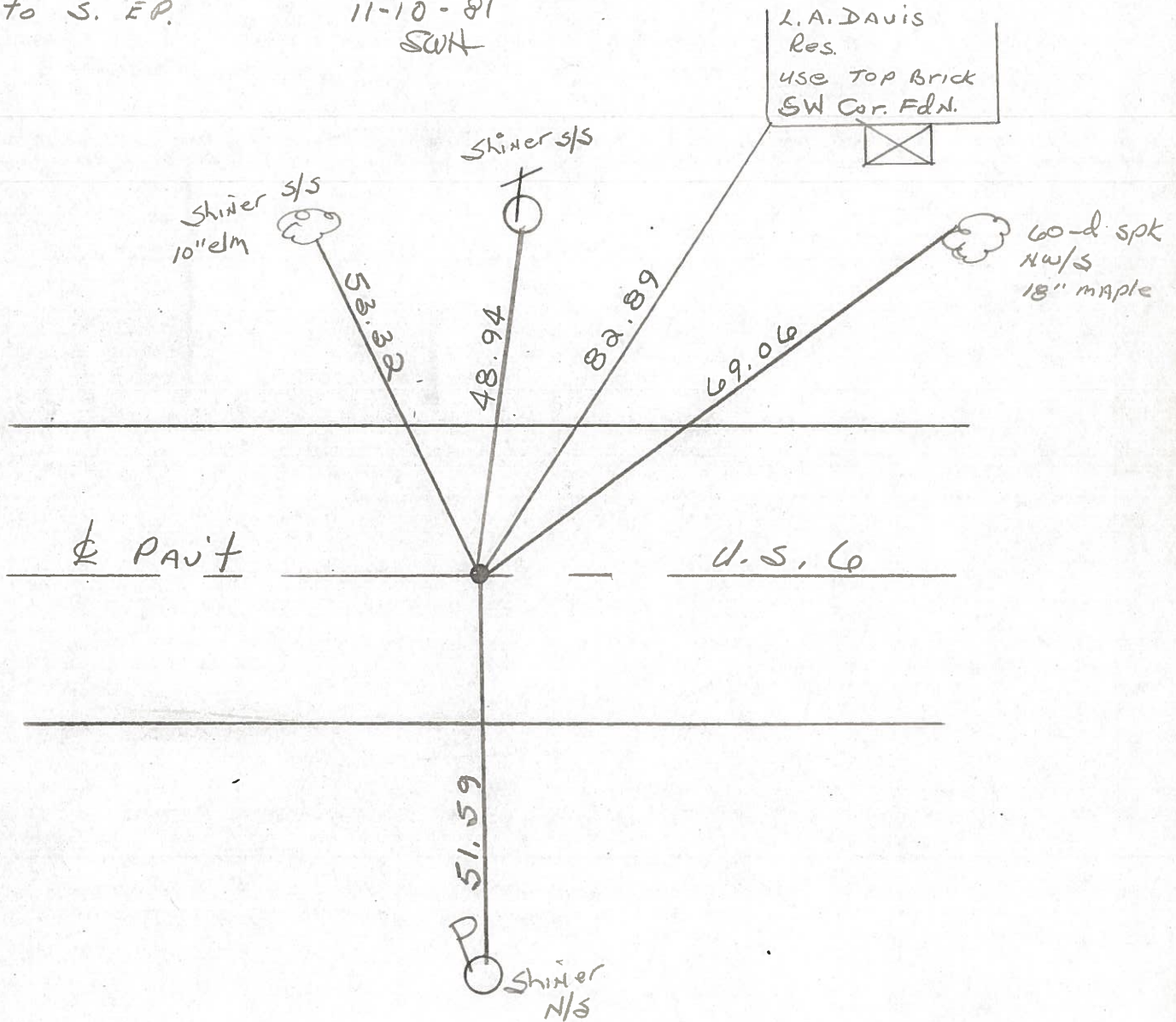
10.8' to N. EP.

SET SMALL R.R. SPK.

11.0' to S. EP.

11-10-81

SWH



P, I, STA. 336 + 20.7 ~ REC.

PERSONNEL TITLE PERSONNEL TITLE

SHEET NO. 11

Red Beach
W. Knape

COUNTY Williams DATE Jan 1976

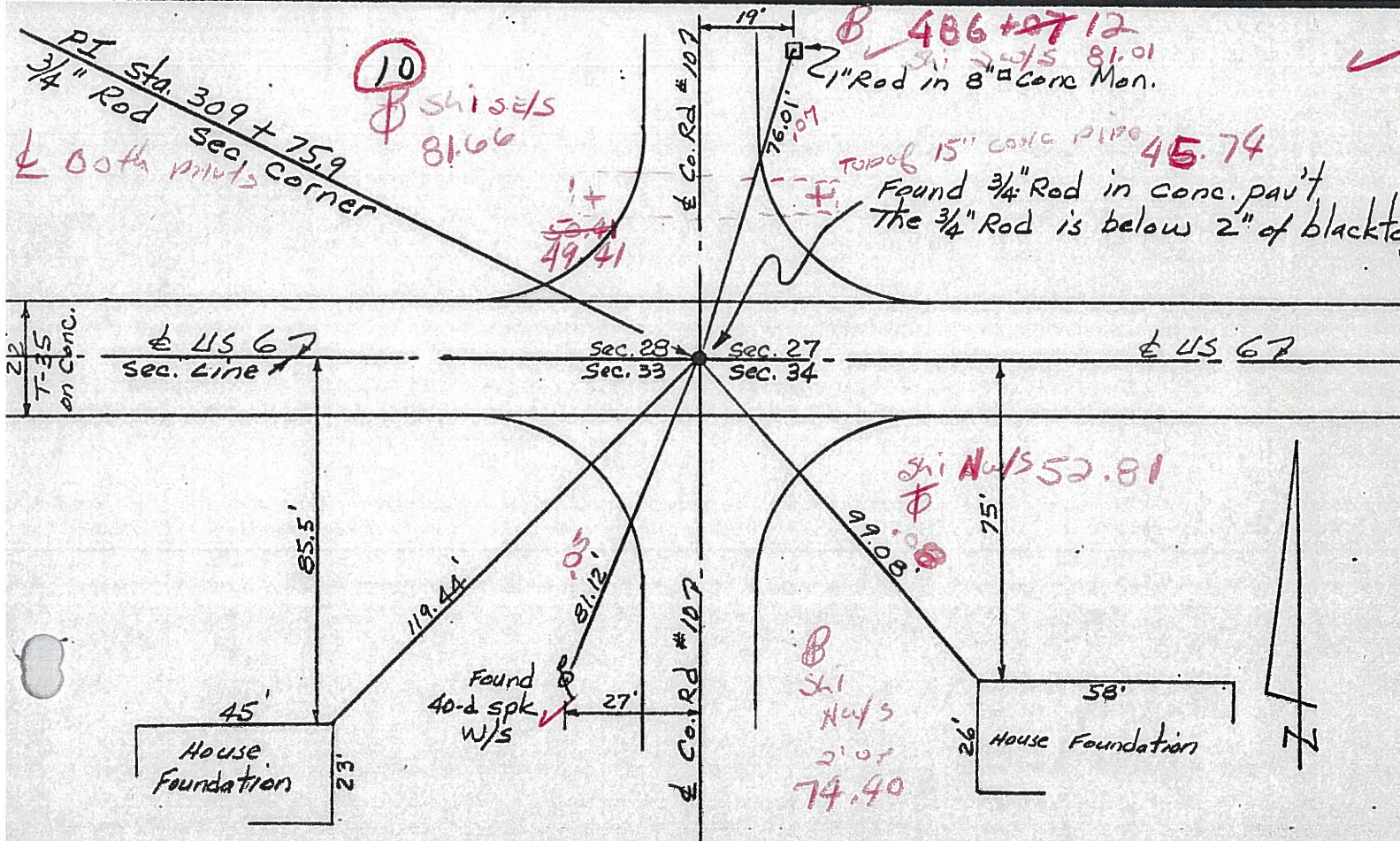
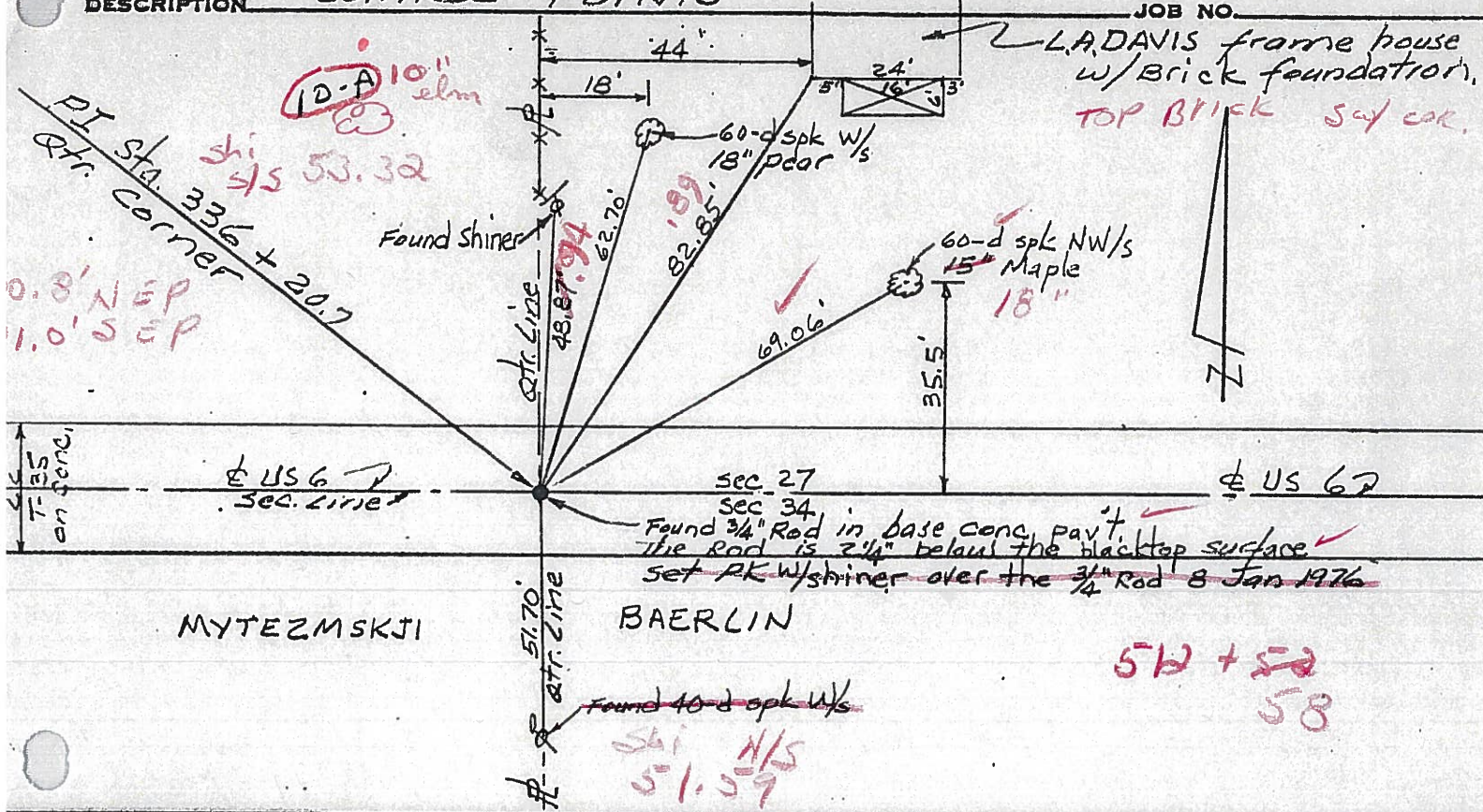
S. R. US 6 WEATHER

SEC. CENTER TWP TEMP

DESCRIPTION

CONTROL POINTS

JOB NO.



PERSONNEL	TITLE	PERSONNEL	TITLE
Louys			
Wise			
Krohn			
Pessefall			

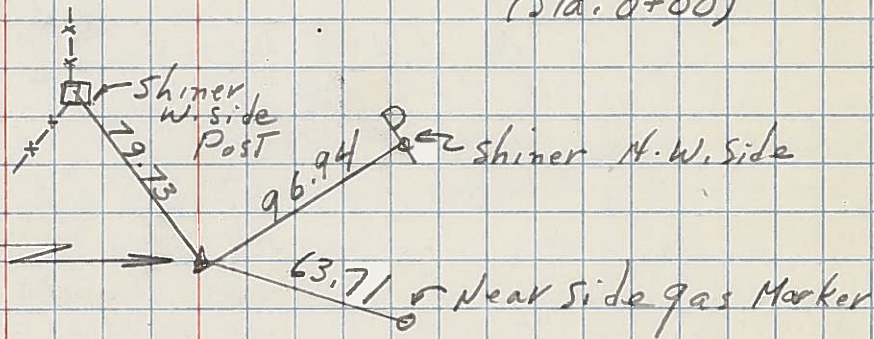
COUNTY Wi. DATE 9/14/58
 S. R. 6 WEATHER Fair
Edgerton, E. Corp. Lim
 SEC. To INTX'N. RT. #2 TEMP. 80°
 DESCRIPTION Witnesses to Control Points JOB NO. _____

LEFT CENTER LINE RIGHT

23
 Sta. 403+31.3 - For Witnesses See Const. Ties DTD. 1958 Rt. #6.
 IRON PIN
 INTX'N RTs. 6#2

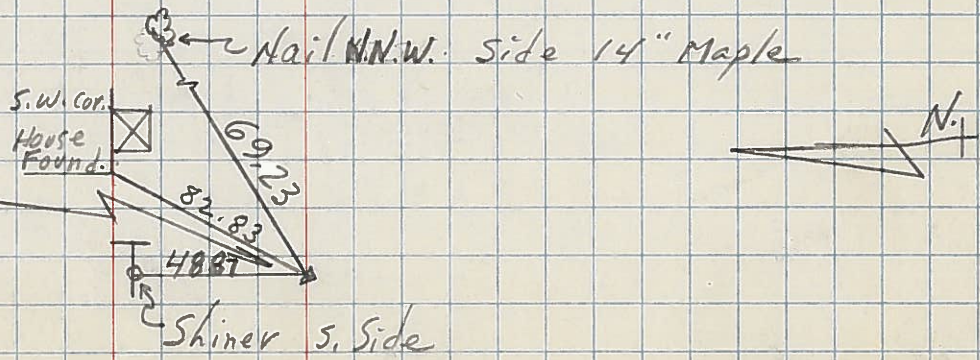
22 →

21
 P.I. - Sta. 362+675
 $\Delta = 0^{\circ}-12'$ RT.
 3/4" Iron Pin
 INTX'N. RT. #576.



20

P.I. - Sta. 336+20.7
 $\Delta = 0^{\circ}-03'$ LT.
 3/4" Iron Pin



(10-A)

