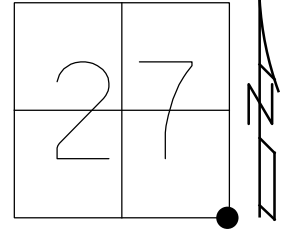


O.D.O.T. DISTRICT 2 SURVEY OFFICE (USE ONLY)

PERSONNEL _____ REFERENCE NO. 11 SHEET 31 OF 41
 NOTES AUBLE DATE 11/6/19 ROUTE US 6
 H.C. LEU WEATHER CLOUDY COUNTY WILLIAMS
 R.C. NASON TEMP. 37° TOWNSHIP CENTER
 SECTION 27
 DWG BY NIESE PID NO PID T 6 N R 2 E

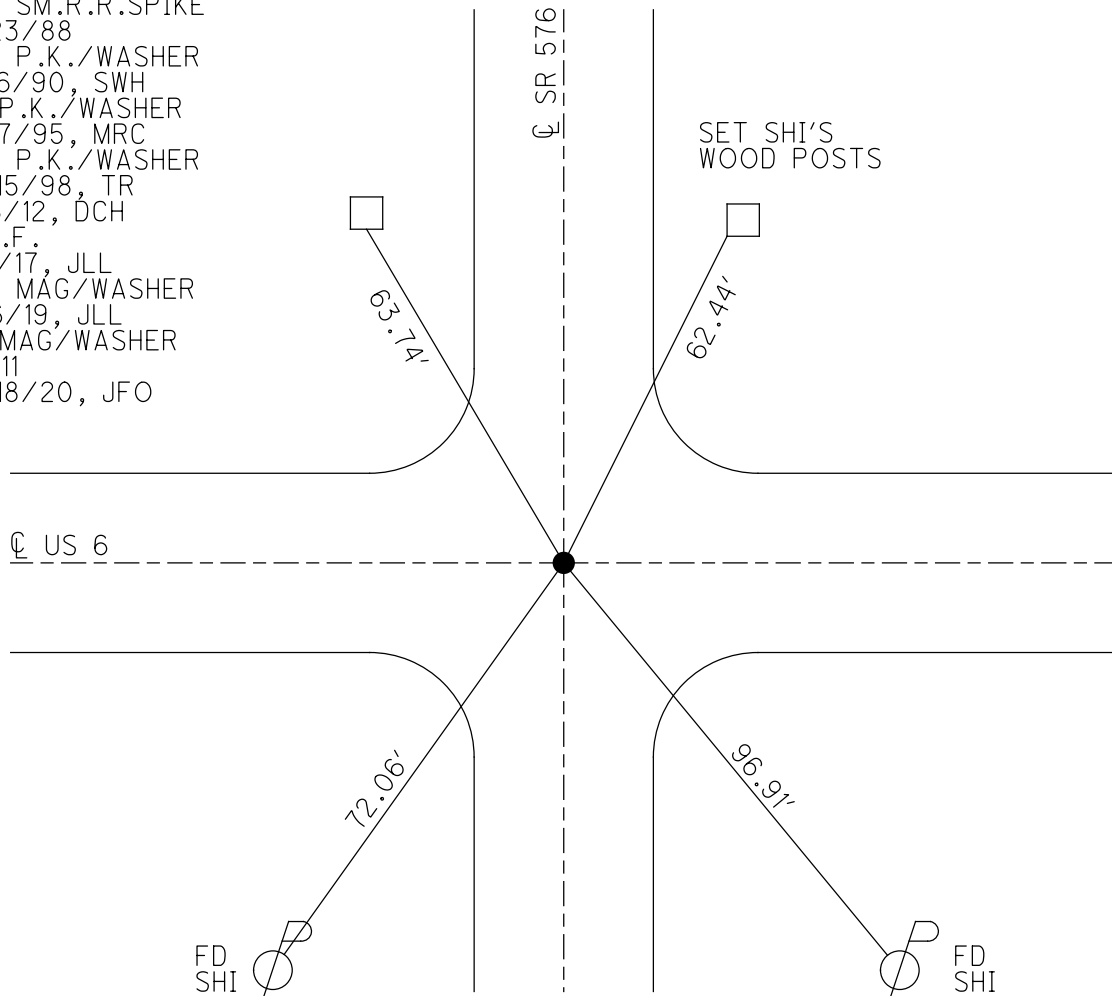
TYPE MONUMENT P.K./WASHER
 ON SURFACE - ~~BELOW~~ ON
 OFFSET Q PAVEMENT ON LT : RT
- TO - EDGE PAVEMENT
 STATION: 538+98.63



HORIZ.DATUM: NAD83 2011 GEOID: NAVD88 2012A
 GRID: NORTHING: 653594.574 EASTING: 1389417.919

RECORD: P.I.
 $\Delta = 0^\circ 12' 00''$ RT
 STA.362+67.5
 SET SM.R.R.SPIKE
 11/23/88
 SET P.K./WASHER
 12/6/90, SWH
 FD P.K./WASHER
 11/17/95, MRC
 SET P.K./WASHER
 12/15/98, TR
 7/6/12, DCH
 D.N.F.
 5/1/17, JLL
 SET MAG/WASHER
 11/6/19, JLL
 FD MAG/WASHER
 REF11
 12/18/20, JFO

NOTE: REF 4 SR 576



O.D.O.T. DISTRICT 2 SURVEY OFFICE

REV. 5/20/92

PERSONNEL _____

REFERENCE NO. 11

SHEET 2 OF 12

NOTES BARNHISEL

H.C. Canterbury

R.C. CORDES

DATE 11-17-95

WEATHER SNOW

TEMP. 32° F

ROUTE U.S. 60

COUNTY Williams

TOWNSHIP Center

SECTION 27

T. 6 R. 2 E

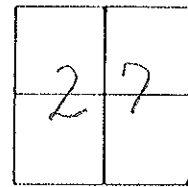
TYPE MONUMENT PK & WASHER

ON SURFACE - BELOW YES

~~LEFT~~ - Q PAV'T. - RIGHT YES

JO - EDGE PAVEMENT ON Q BOTH

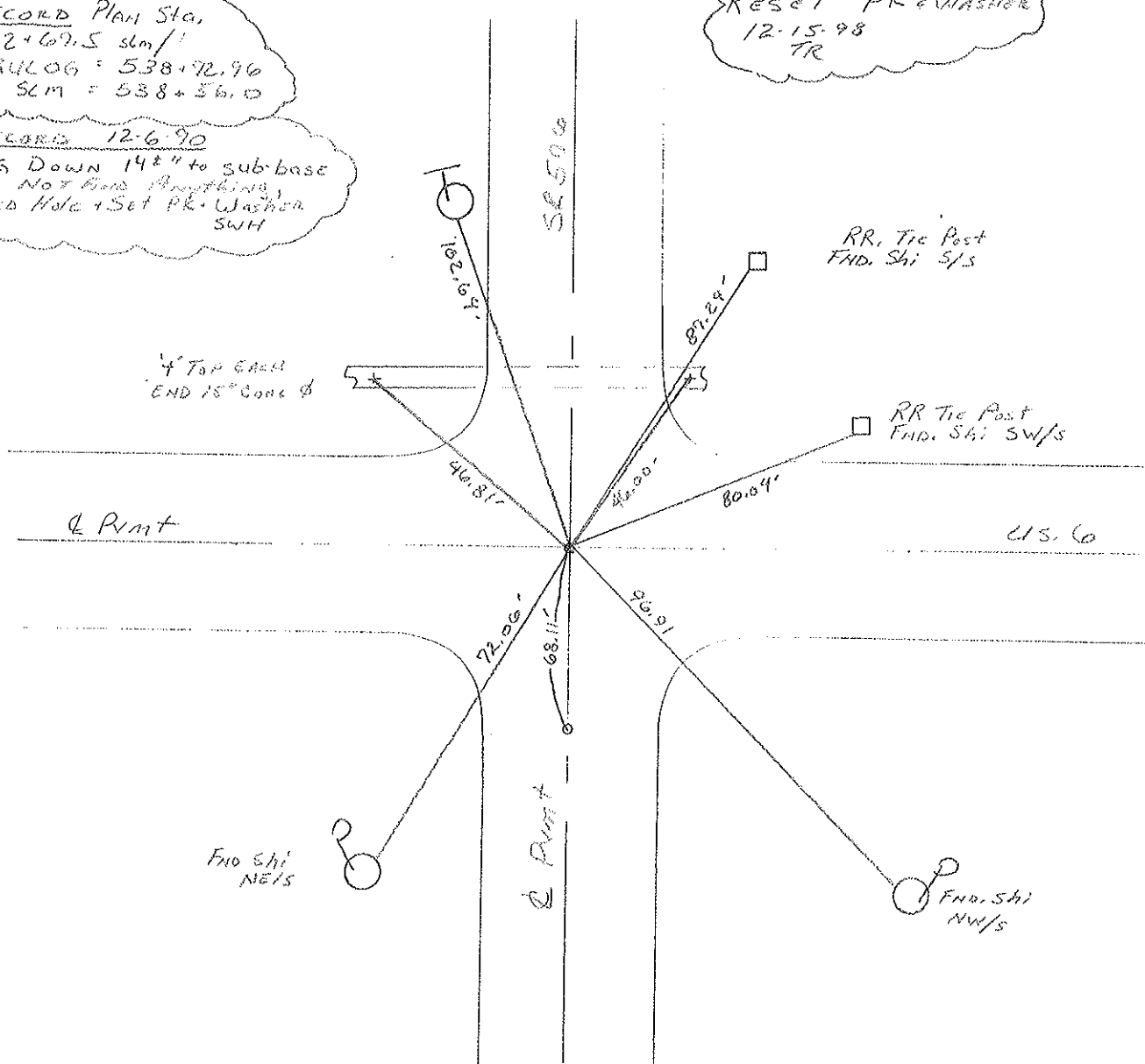
S.L.M. 539+14 Back = 538+56 AHEAD



RECORD PLAN STA.
362+69.5 slm/!
TRULOG = 538+72.96
SLM = 538+56.0

RESET PK & WASHER
12-15-98
TR

RECORD 12-6-90
DUG DOWN 14" to sub-base
DID NOT FIND ANYTHING,
FILLED HOLE + SET PK + WASHER
SWH

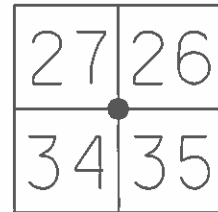


DRAWN BY TR

O.D.O.T. DISTRICT 2 SURVEY OFFICE (USE ONLY)

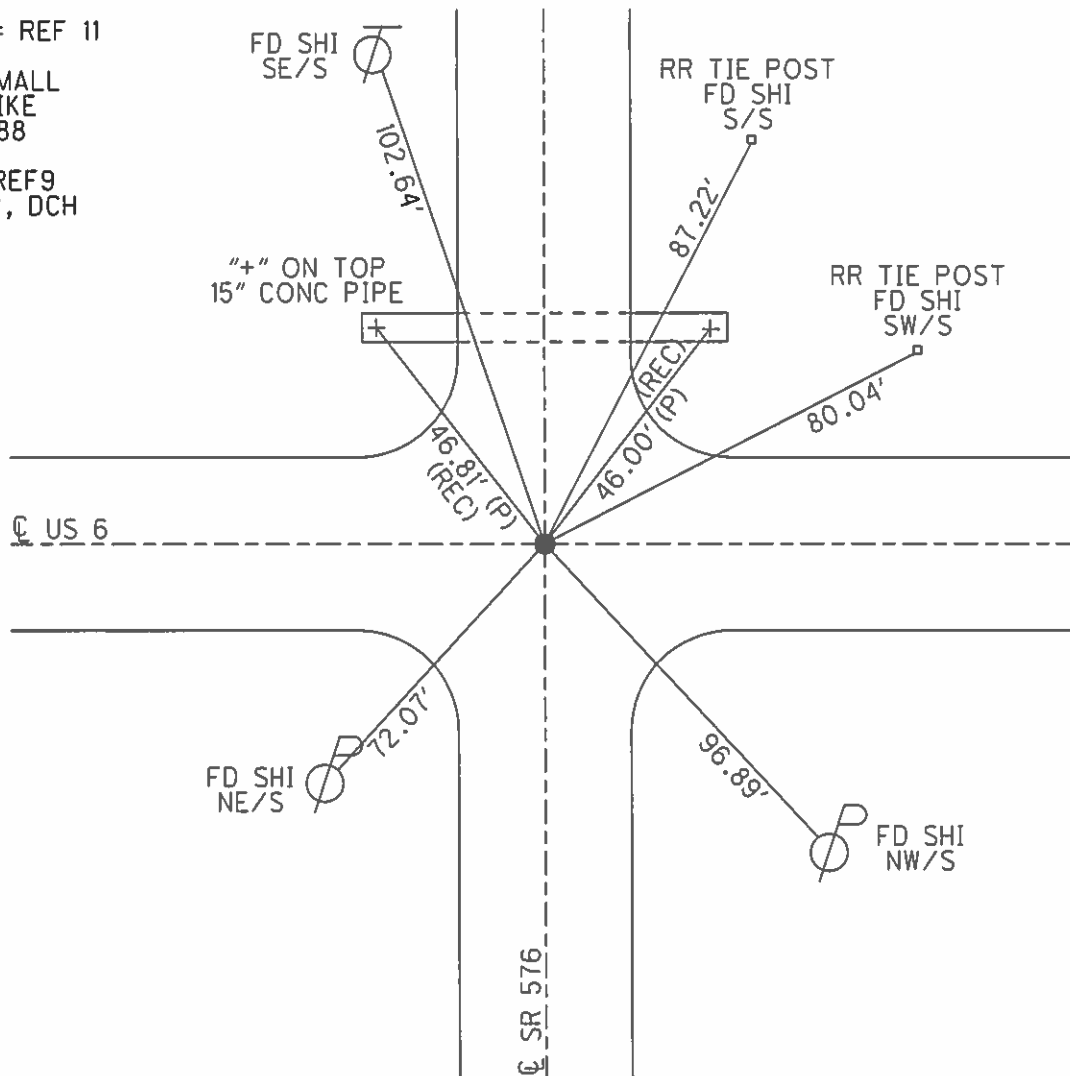
PERSONNEL _____ REFERENCE NO. 4 SHEET 9 OF 14
 NOTES HOFFMAN DATE 10-12-88 ROUTE SR 576
 H.C. BARNHISEL WEATHER P. CLEAR COUNTY WILLIAMS
 R.C. LOEHRKE TEMP. 48° TOWNSHIP CENTER
 _____ SECTION 26
 _____ T 6 N R 2 E

TYPE MONUMENT SMALL RR SPIKE
 ON SURFACE - ~~BELOW~~ ON
~~LEFT~~ - Q PAV'T - ~~RIGHT~~ ON
 _____ TO _____ EDGE PAVEMENT
 S.L.M. 539+14 BACK = 538+56 AHEAD



Grid: Northing: 653594.4765 Easting: 1389417.8353

NOTE:
 US 6 = REF 11
 SET SMALL
 RR SPIKE
 11-23-88
 GPS, REF9
 7-6-12, DCH



O.D.O.T. DISTRICT 2 SURVEY OFFICE

PERSONNEL

REFERENCE NO. 71

SHEET 31 OF

NOTES LOHRKE

H.C. Reed

DATE 4-13-88

ROUTE U.S. 6

R.C. Bechtel

WEATHER Clear

COUNTY Williams

Hoffman

TEMP. +50

TOWNSHIP Center

SECTION 26, 27, 34, 35

T 6 N R 2 E

TYPE MONUMENT Sm. R.P. Spike

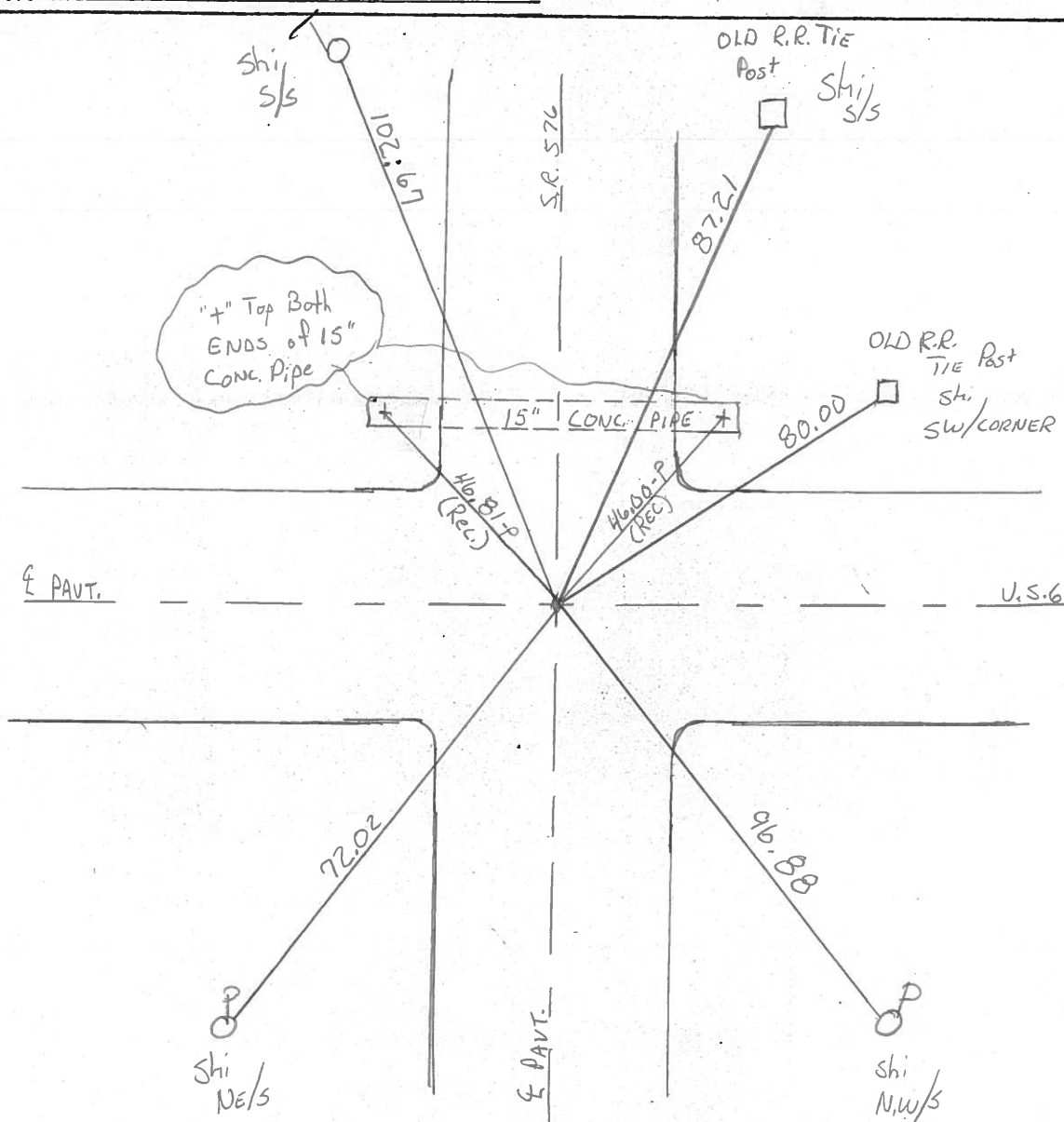
ON SURFACE - BELOW

LEFT - € PAV'T. - RIGHT Both Pavt.

 TO EDGE PAVEMENT

S.L.M. 539+14

27	26
34	35



County Williams S.R. 4.S.6

Date 7-22-81

Township Cexter

Weather clear

Section 26, 27, 34, 35

Temp. + 70°

T6N, R2E

Personnel HOFFMAN

Loehrke

Householder

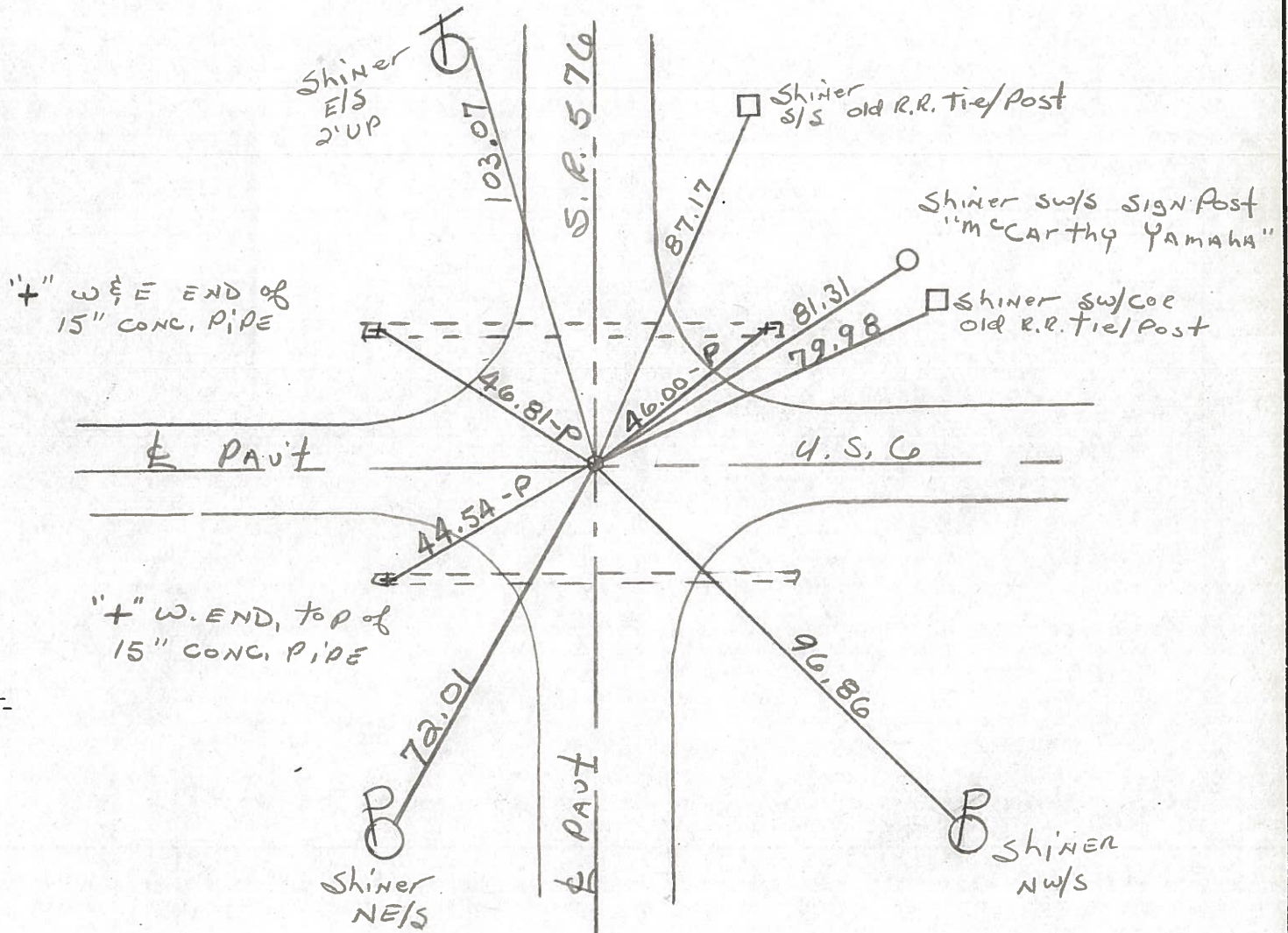
27	26
24	35



#11

Fd. small R.R. SPK @ SURFACE @ PAUT CTR'S.

PROJECT STA ± 539 + 06



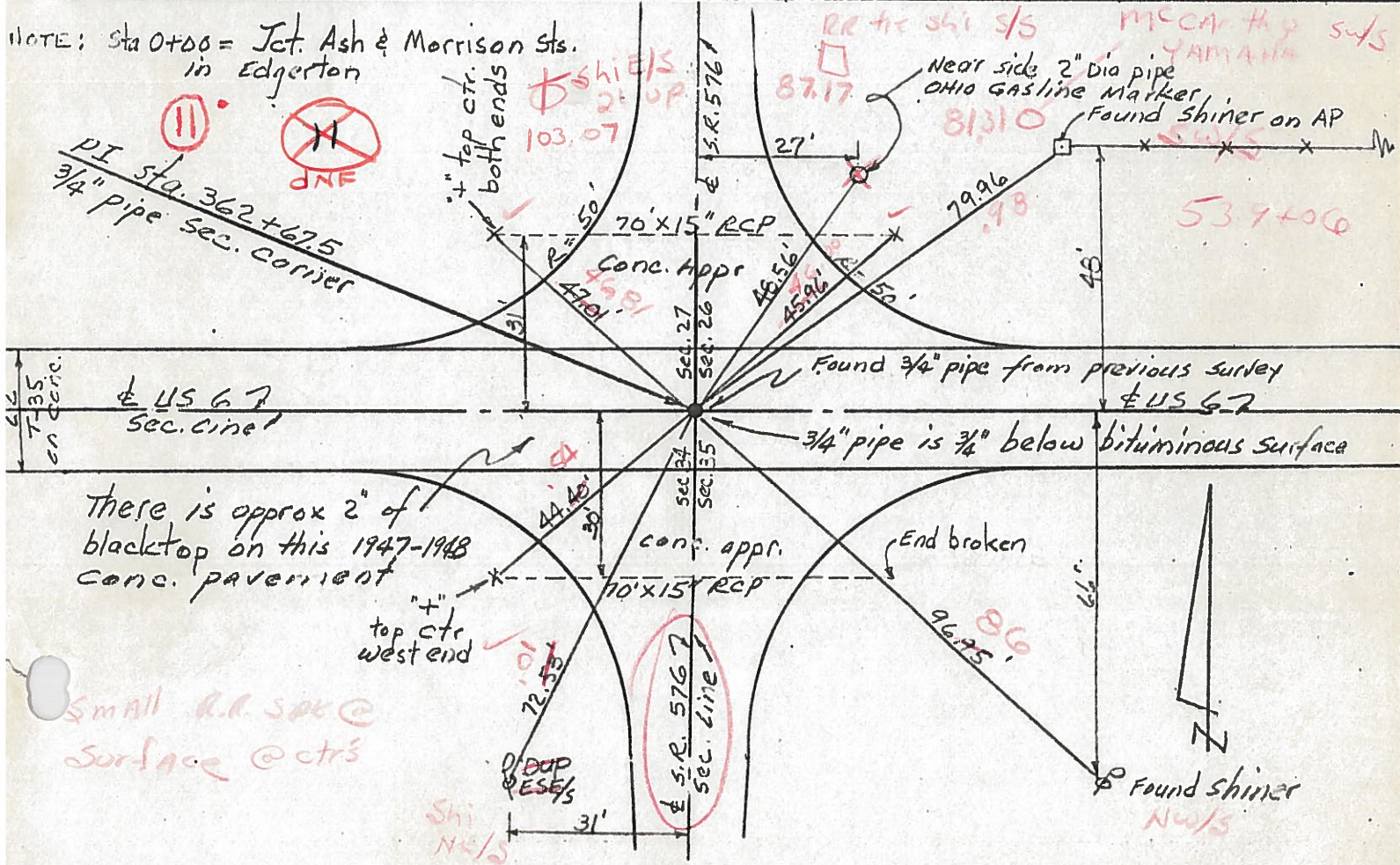
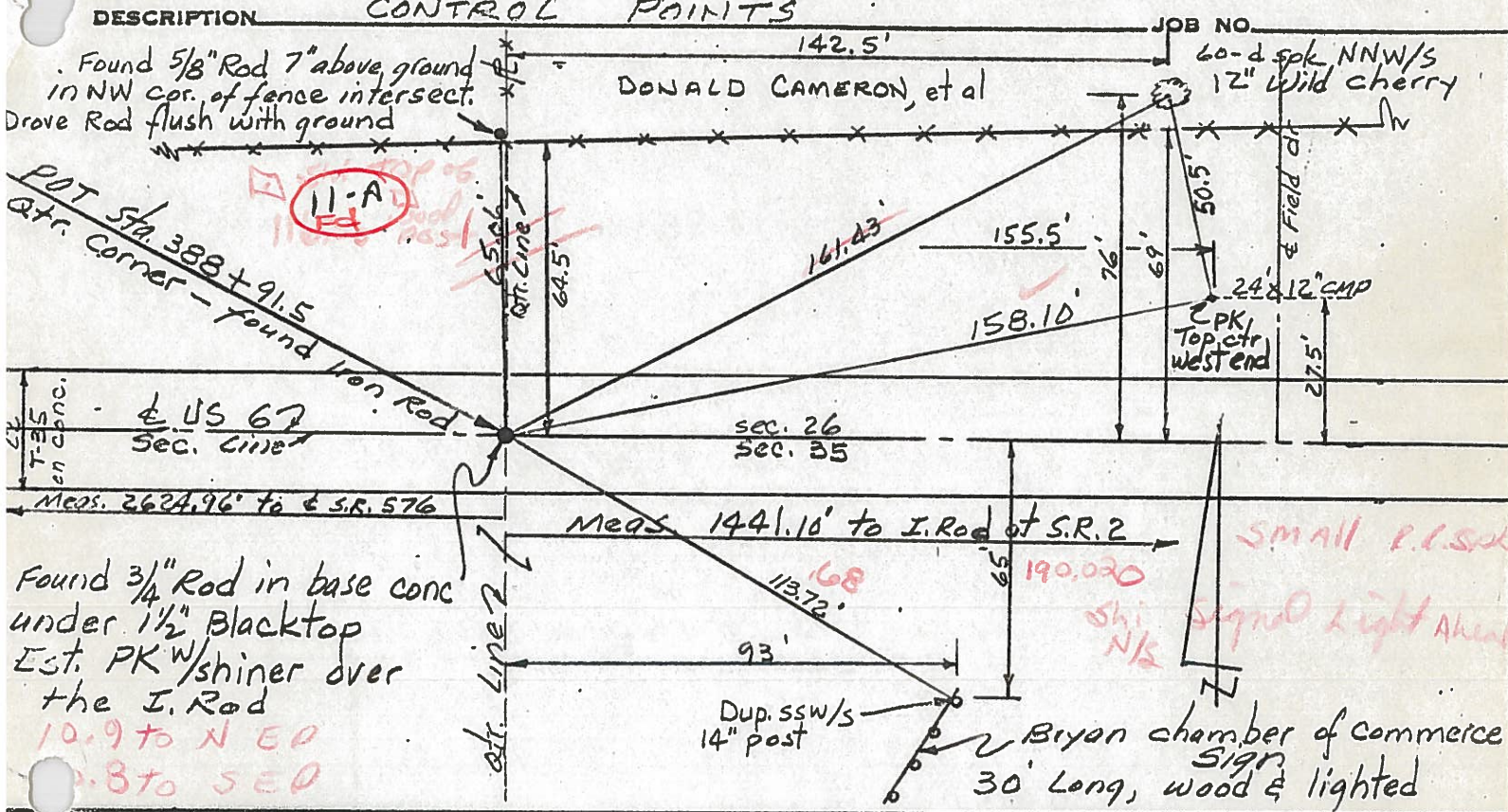
"+" W & E END of 15" CONC. PIPE

"+" W. END, TOP of 15" CONC. PIPE

P. I. STA. 362 + 67.5 ~ Rec.

PERSONNEL	TITLE	PERSONNEL	TITLE
Red Beach			
W. Krape			

COUNTY Williams DATE Jan 1976
 S. R. US 6 WEATHER _____
 SEC. CENTER TWP _____ TEMP _____



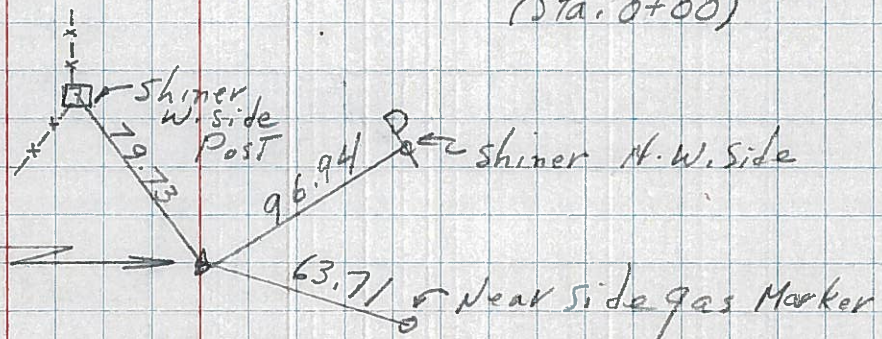
PERSONNEL	TITLE	PERSONNEL	TITLE
Louys			
Wise			
Krohn			
Pesefall			

COUNTY Wi. DATE 9/14/58
 S. R. 6 WEATHER Fair
Edgerton E. Corp. Lim
 SEC. To INT & N. RT. #2 TEMP. 80°

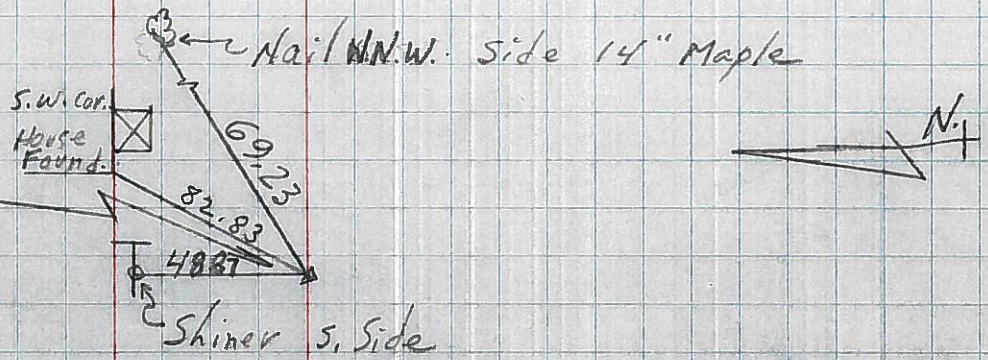
DESCRIPTION Witnesses to Control Points JOB NO. _____
 LEFT CENTER LINE RIGHT

23
 Sta. 403+31.3 - For Witnesses See Constr. Ties DTD. 1958 RT. #6.
 IRON PIN
 INT & N. RT. #2 (Sta. 0+00)

22 →
21
 P.I. - Sta. 362+675
 $\Delta = 0^\circ - 12' RT.$
 3/4" Iron Pin
 INT & N. RT. #576.



20
 P.I. - Sta. 336+20.7
 $\Delta = 0^\circ - 03' LT.$
 3/4" Iron Pin



(11)

(10-A)