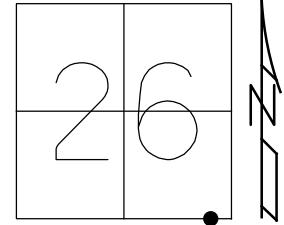


O.D.O.T. DISTRICT 2 SURVEY OFFICE (USE ONLY)

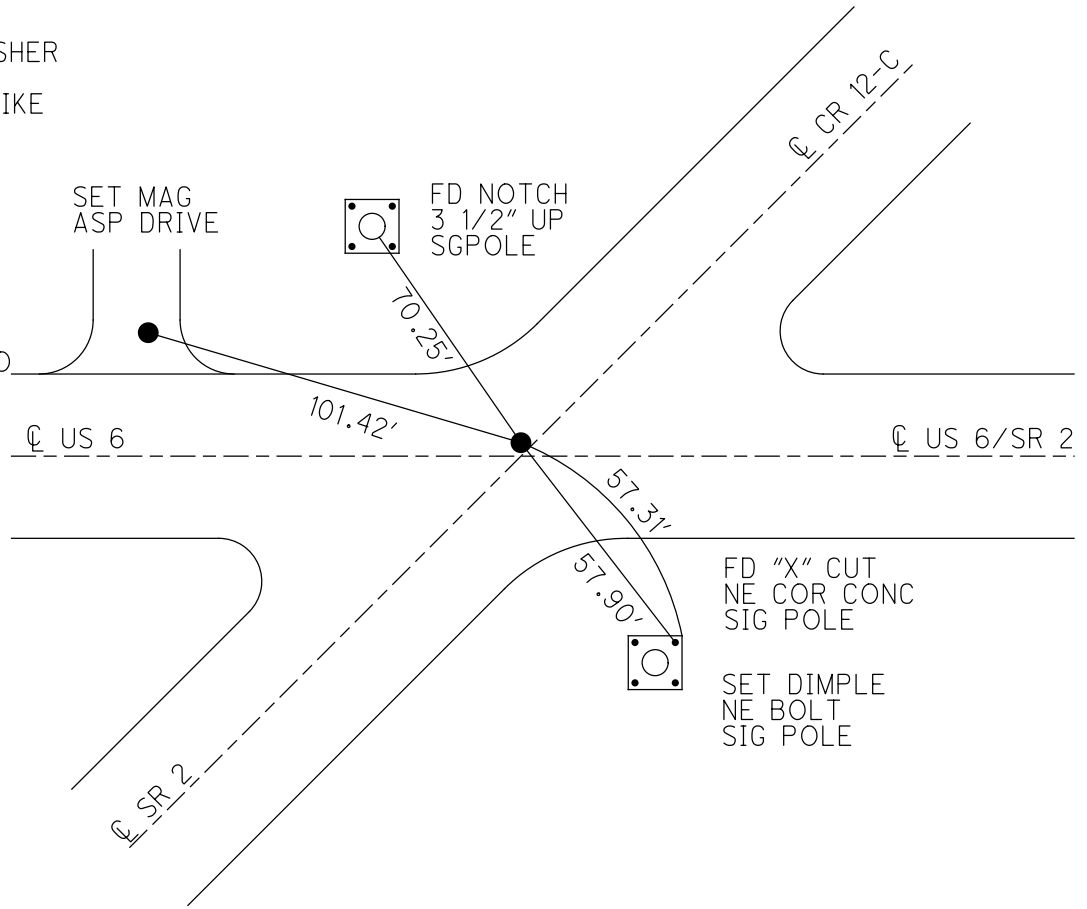
PERSONNEL _____ REFERENCE NO. 11 B SHEET 33 OF 41
 NOTES RHOADES DATE 7/17/18 ROUTE US 6
 H.C. LEU WEATHER SUNNY COUNTY WILLIAMS
 R.C. HAGEMeyer TEMP. 75° TOWNSHIP CENTER
 _____ TRENKA SECTION 26
 DWG BY NIESE PID NO PID T 6 N R 2 E

TYPE MONUMENT DRILLHOLE
 ON SURFACE - ~~BELOW~~ ON
 OFFSET ☉ PAVEMENT 1.0' LT : ~~RT~~
- TO - EDGE PAVEMENT
 STATION: 579+64.11

HORZ.DATUM: NAD83 2011 GEOID: NAVD88 2012A
 GRID: NORTHING: 653503.190 EASTING: 1393481.996



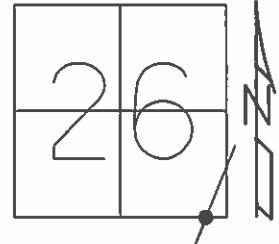
RECORD: P.O.T.
 1947 PLAN
 STA.403+31.3
 WEST 1957 PLAN
 SET SM.R.R.SPIKE
 11/23/83
 FD 1" IPIN
 5.5" DOWN
 SET P.K./WASHER
 12/7/90
 FD LG.R.R.SPIKE
 11/17/95, MB
 SET DRILLH
 11/2/98, MB
 FD DRILLH
 8/16/12
 5/1/17, JLL
 11/6/19, JLL
 FD DRILLH
 REFB11
 12/18/20, JFO



O.D.O.T. DISTRICT 2 SURVEY OFFICE (USE ONLY)

PERSONNEL _____ REFERENCE NO. 11 B SHEET 8 OF 8
 NOTES BARNHISEL DATE 11/17/95 ROUTE US 6
 H.C. CANTERBURY WEATHER SNOW COUNTY WILLIAMS
 R.C. CORDES TEMP. 32° TOWNSHIP CENTER
 _____ SECTION 26
 _____ T 6 N R 2 E

TYPE MONUMENT LG.R.R.SPIKE
 ON SURFACE - ~~BELOW~~ ON
 LEFT - ☉ PAV'T - RIGHT ON
_____ TO _____ EDGE PAVEMENT
 S.L.M. 403+31.30

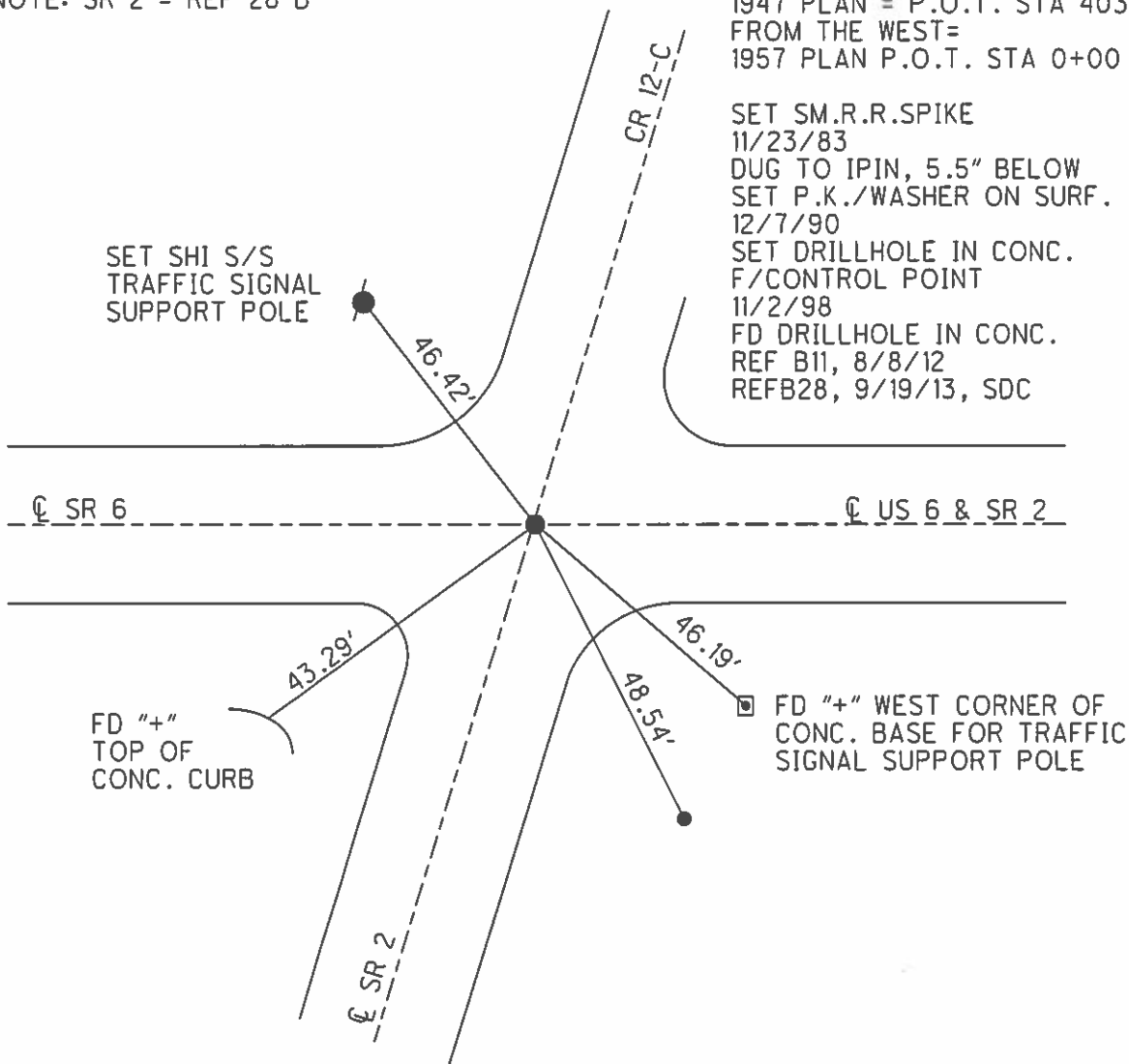


Grid: Northing: 653503.073 Easting: 1393482.018

NOTE: SR 2 = REF 28 B

RECORD:
 1947 PLAN = P.O.T. STA 403+31.3
 FROM THE WEST=
 1957 PLAN P.O.T. STA 0+00 EAST

SET SM.R.R.SPIKE
 11/23/83
 DUG TO IPIN, 5.5" BELOW
 SET P.K./WASHER ON SURF.
 12/7/90
 SET DRILLHOLE IN CONC.
 F/CONTROL POINT
 11/2/98
 FD DRILLHOLE IN CONC.
 REF B11, 8/8/12
 REFB28, 9/19/13, SDC

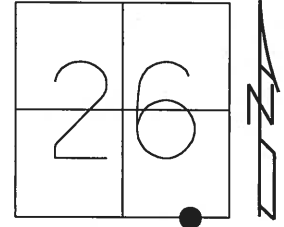


O.D.O.T. DISTRICT 2 SURVEY OFFICE (USE ONLY)

PERSONNEL _____ REFERENCE NO. 11 B SHEET 4 OF 12

NOTES BARNHISEL DATE 11-17-1995 ROUTE US 6
 H.C. CANTERBURY WEATHER SNOW COUNTY WILLIAMS
 R.C. CORDES TEMP. 32°F TOWNSHIP CENTER
 SECTION 26
 T 6 N R 2 E

TYPE MONUMENT LG RR SPK
 ON SURFACE - ~~BELOW~~ ON _____
~~LEFT~~ - Q PAV'T - ~~RIGHT~~ ON _____
 - TO - EDGE PAVEMENT
 S.L.M. 403+31.30, SR 2=66+85.47



Grid: Northing: 653503.1660 Easting: 1393481.9822

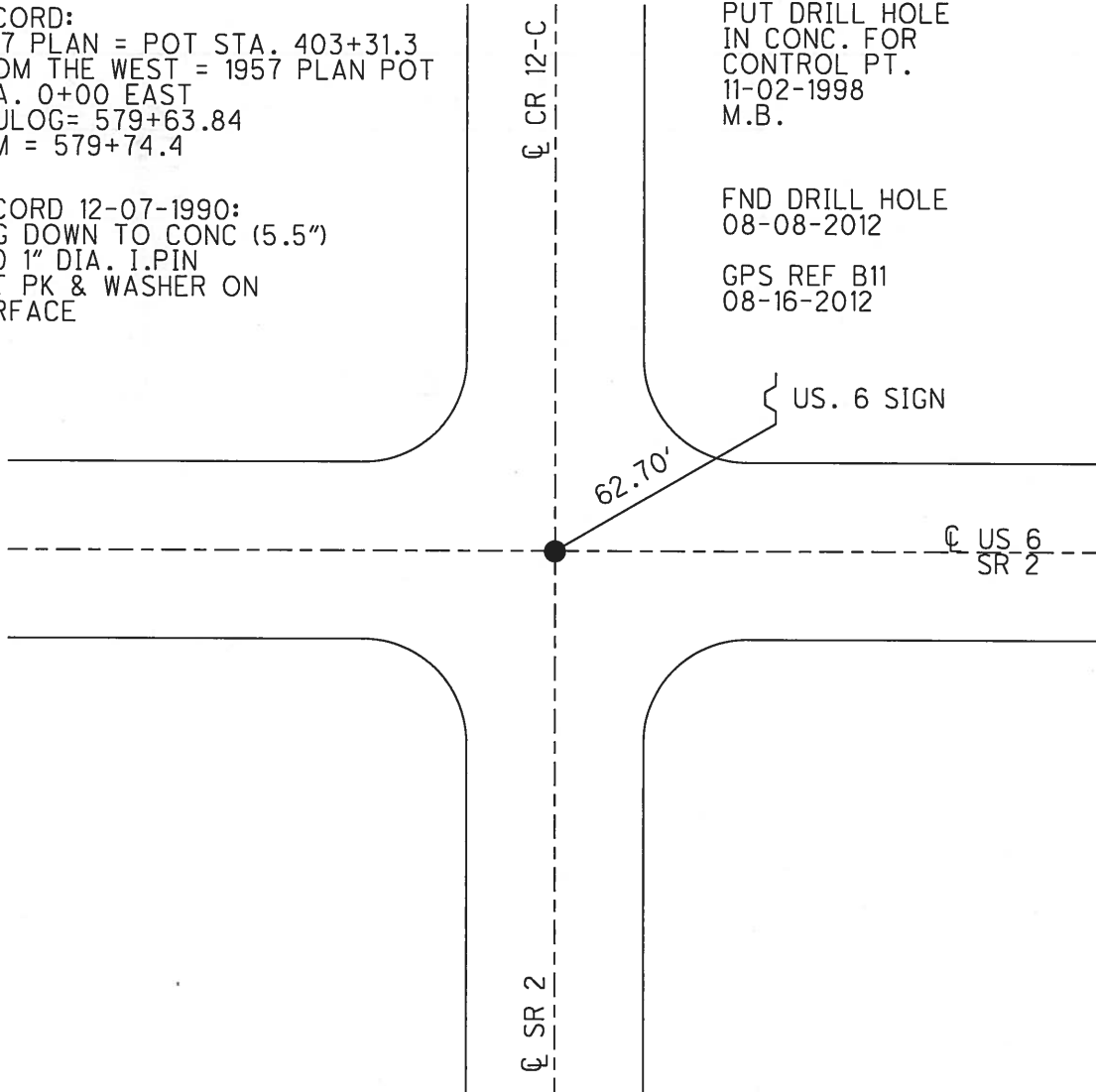
RECORD:
 1947 PLAN = POT STA. 403+31.3
 FROM THE WEST = 1957 PLAN POT
 STA. 0+00 EAST
 TRULOG= 579+63.84
 SLM = 579+74.4

RECORD 12-07-1990:
 DUG DOWN TO CONC (5.5")
 FND 1" DIA. I.PIN
 SET PK & WASHER ON
 SURFACE

PUT DRILL HOLE
 IN CONC. FOR
 CONTROL PT.
 11-02-1998
 M.B.

FND DRILL HOLE
 08-08-2012

GPS REF B11
 08-16-2012



O.D.O.T. DISTRICT 2 SURVEY OFFICE

PERSONNEL

REFERENCE NO. 11-8

SHEET 4 OF 12

NOTES BARNHISEL

H.C. CANTERBURY

R.C. CORDES

DATE 11-17-95

WEATHER SNOW

TEMP. 32°F

ROUTE US. 6

COUNTY Williams

TOWNSHIP CENTER

SECTION 26

T 6 N R 2 E

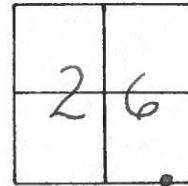
TYPE MONUMENT Lg. RR. SPK

ON SURFACE - ~~BELOW~~ YES

~~LEFT~~ - PAV'T. - RIGHT YES

TO EDGE PAVEMENT

S.L.M. 579+58.18, SR 2 67+05.60



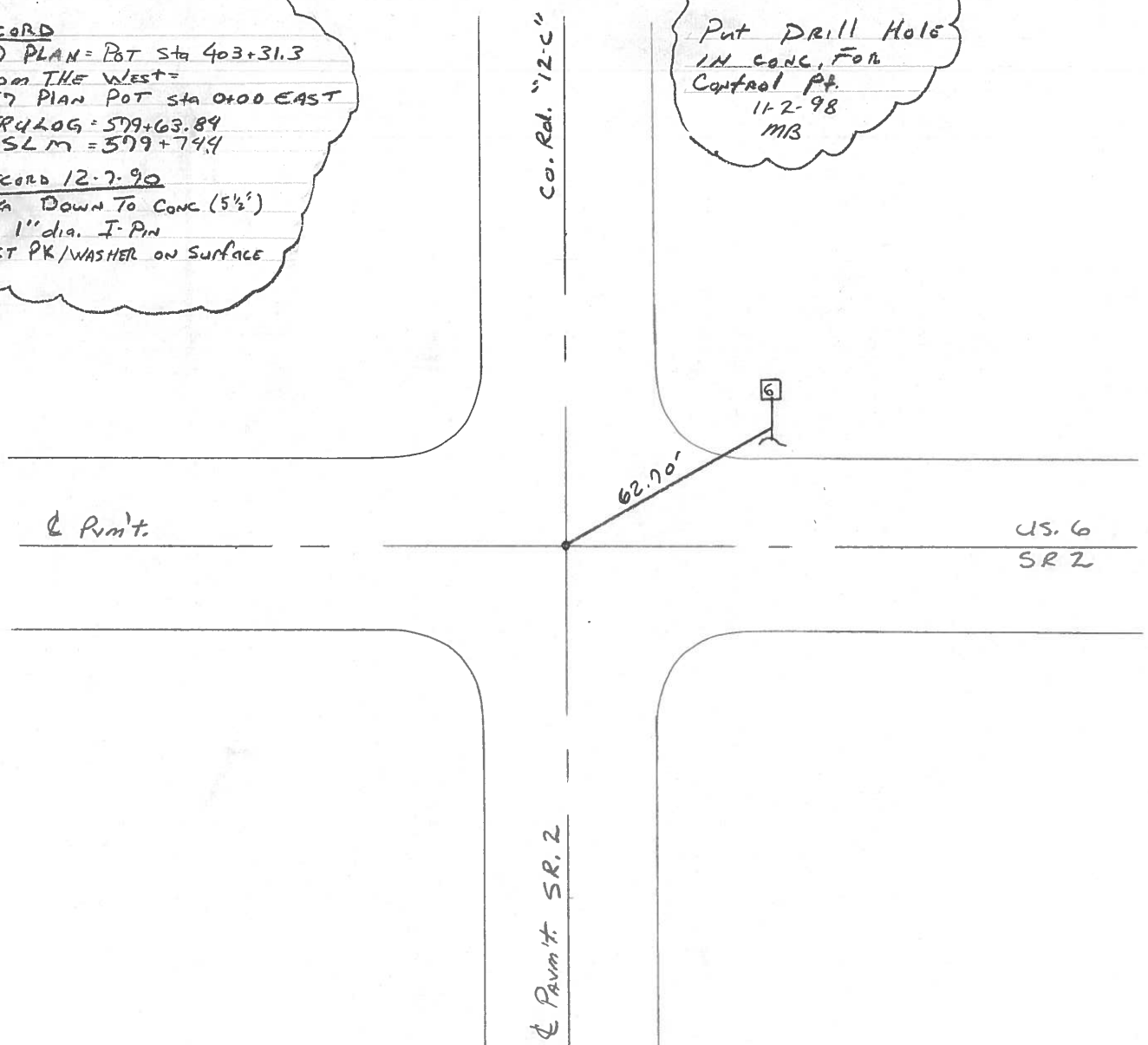
RECORD

1949 PLAN = POT Sta 403+31.3
 FROM THE WEST =
 1957 PLAN POT Sta 0+00 EAST
 TR4 LOG = 579+63.84
 SLM = 579+74.4

RECORD 12-7-90

DUG DOWN TO CONC (5 1/2')
 FND. 1" dia. I-PIN
 SET PK/WASHER ON SURFACE

Put DRILL HOLE
 IN CONC. FOR
 Control Pt.
 11-2-98
 MIB



O.D.O.T. DISTRICT 2 SURVEY OFFICE

PERSONNEL

REFERENCE NO. 11-B

SHEET 4 OF 11

NOTES BARNHISEL

H.C. CANTERBURY

R.C. CORDES

DATE 11-17-95

WEATHER SNOW

TEMP. +0° C

ROUTE U.S. 6

COUNTY WILLIAMS

TOWNSHIP CENTER

SECTION 26

T. 6 N R. 2 E

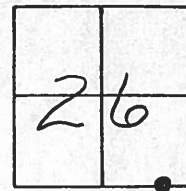
TYPE MONUMENT Lg RR Spk

ON SURFACE - ~~BELOW~~ yes

~~EAST - & PAV'T.~~ yes

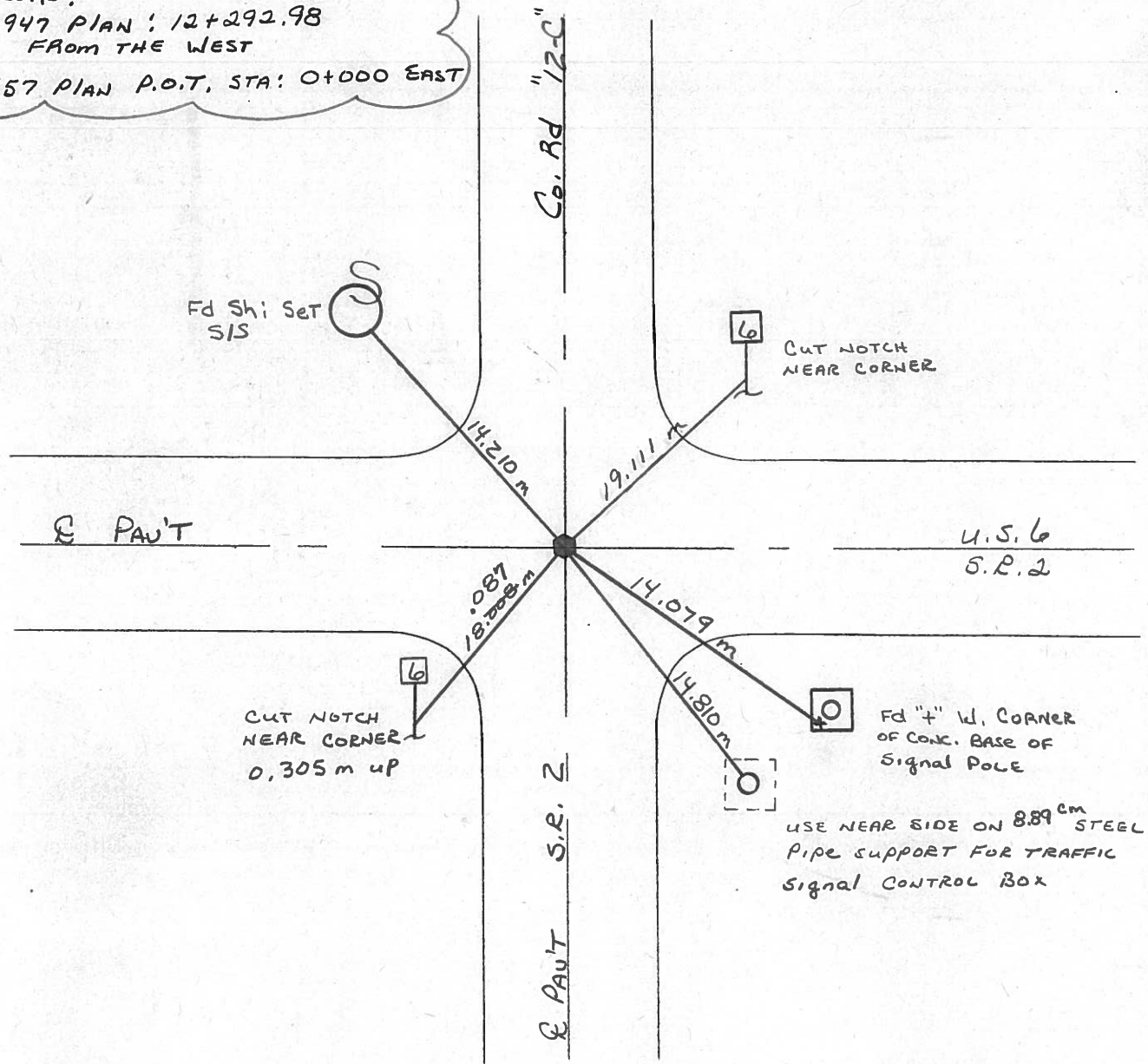
- TO - EDGE PAVEMENT

S.L.M. 17+646.547



RECORD:

1947 PLAN: 12+292.98
FROM THE WEST
1957 PLAN P.O.T. STA: 0+000 EAST



O.D.O.T. DISTRICT 2 SURVEY OFFICE

PERSONNEL

REFERENCE NO. 11-B

SHEET OF

NOTES HOFFMAN

H.C. BARNHISEL

R.C. LOZARRE

DATE 10-12-88

WEATHER P. CLEAR

TEMP. 49°

ROUTE US 6

COUNTY Williams

TOWNSHIP CENTER

SECTION 26

T. 6 N. R. 2 E

TYPE MONUMENT SMALL R.R. SPIKE

ON SURFACE - ~~BELOW~~ YES

LEFT - CTR PAV'T. - RIGHT CTR of BOTH

TO EDGE PAVEMENT

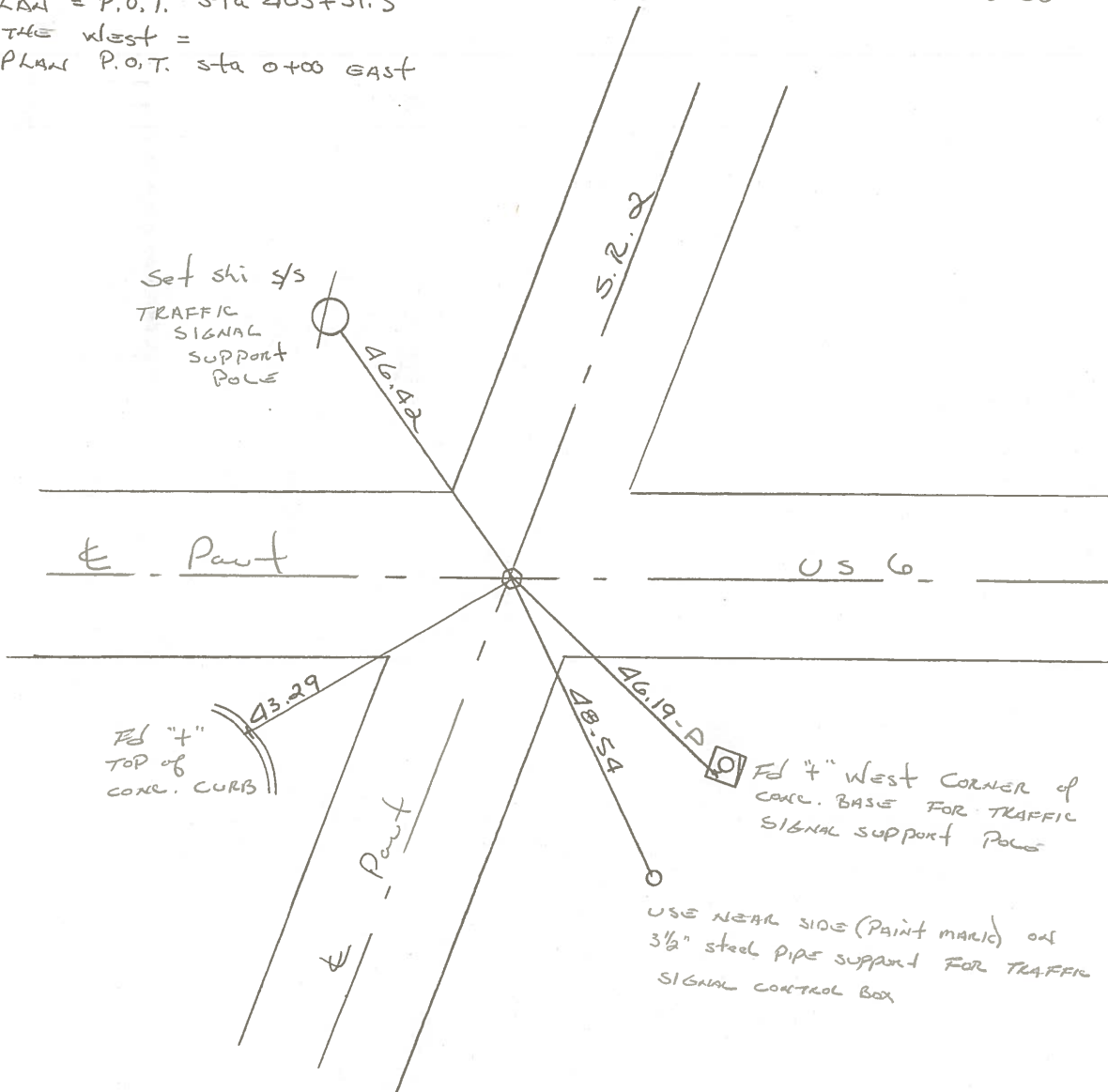
S.L.M. 579 +09



Set SMALL R.R. SPIKE
11-23-88 SWH

RECORD:

1947 PLAN = P.O.T. sta 403+31.3
FROM THE WEST =
1957 PLAN P.O.T. sta 0+00 EAST



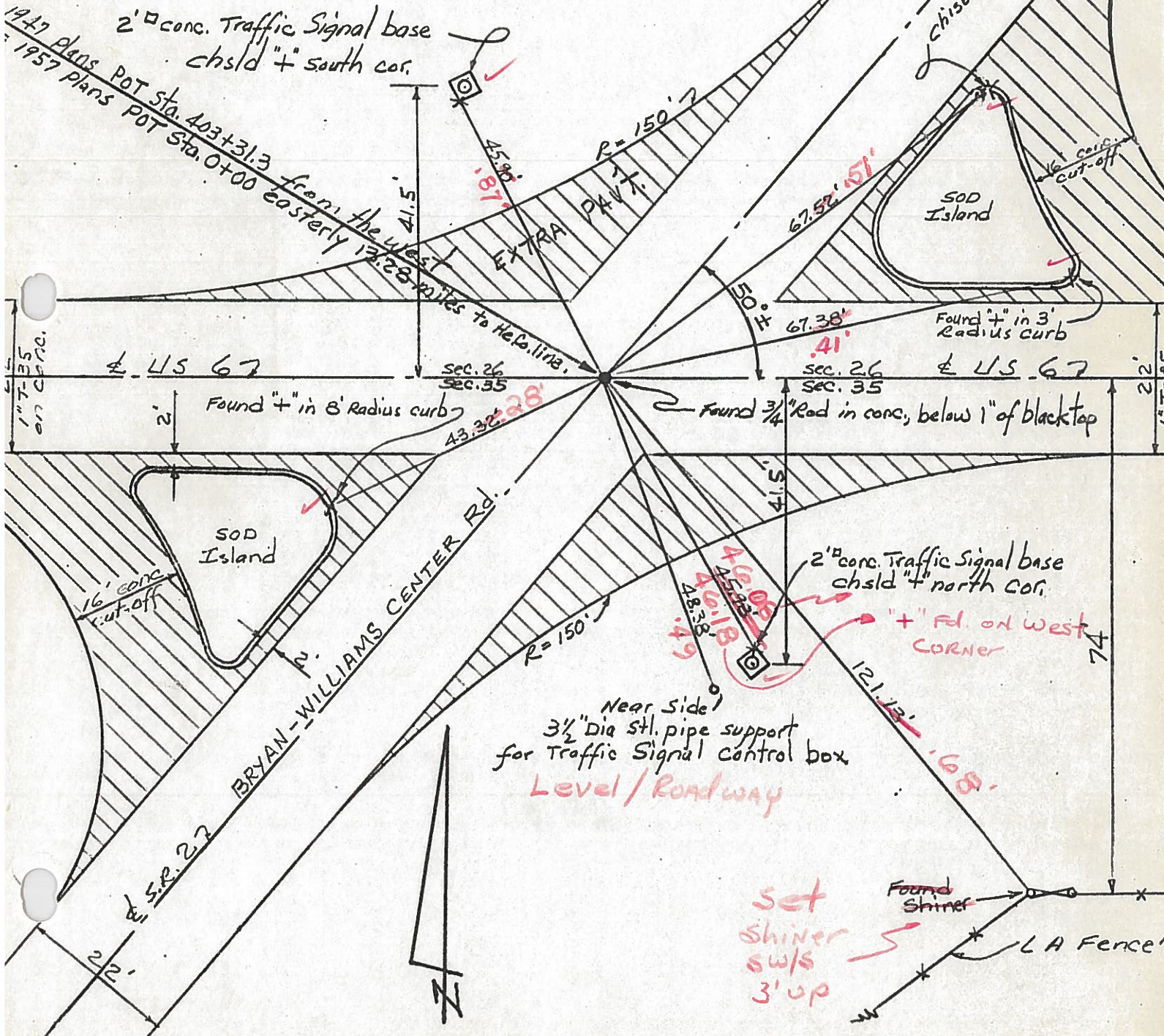
PERSONNEL Red Beach W. Knappe	TITLE	PERSONNEL	TITLE	COUNTY Williams	DATE 23 Dec. 1972
				S. R. US 6	WEATHER
				SEC. Center Twp., Jct S.R. 27	TEMP.

DESCRIPTION CONTROL POINTS for 13.28 miles to the He. Co. Line JOB NO. _____

7-22-81
SWT
11-B

Fd. Small R.R. SPK @ surface

1947 plans POT Sta. 403+31.3 from the west
1957 plans POT Sta. 0+00 easterly 13.28 miles to He. Co. line.



PERSONNEL TITLE PERSONNEL TITLE

Red Beach
W. Knappe

COUNTY Williams

DATE 23 Dec. 1975

S. R. US 6

WEATHER

SEC. Center Twp., Jct SR. 2

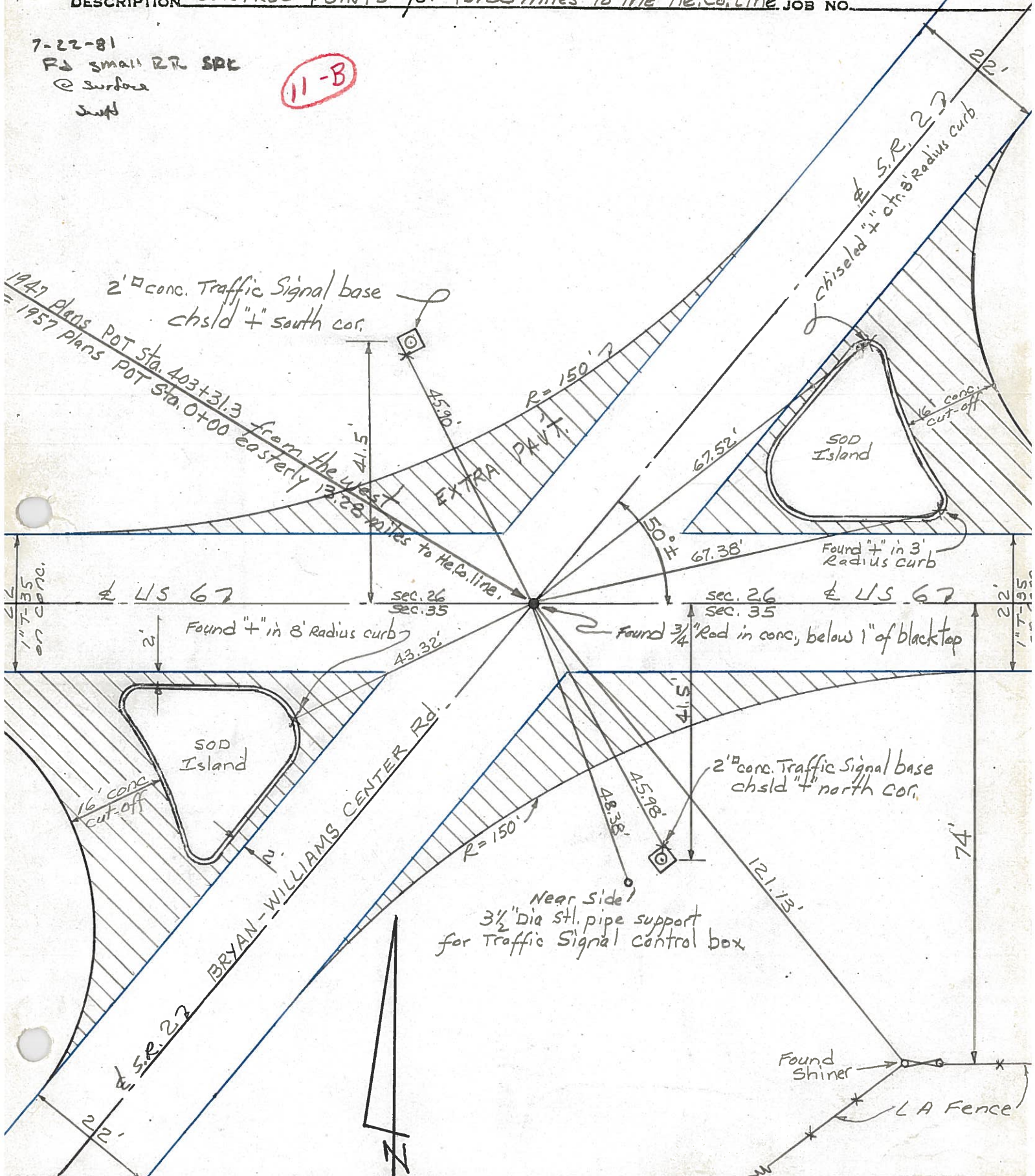
TEMP

DESCRIPTION CONTROL POINTS for 13.28 miles to the He.Co. Line

JOB NO.

7-22-81
Rd small RR SPC
@ surface
Jupf

11-B



1947 Plans POT Sta. 403+31.3 from the west
 = 1957 Plans POT Sta. 0+00 easterly

1"7-35 on conc.
 2' Found "+" in 8' Radius curb
 43.32'
 sec. 26
 sec. 35
 Found 3/4" Rod in conc. below 1" of blacktop

Near side
 3 1/2" Dia stl. pipe support
 for Traffic Signal control box

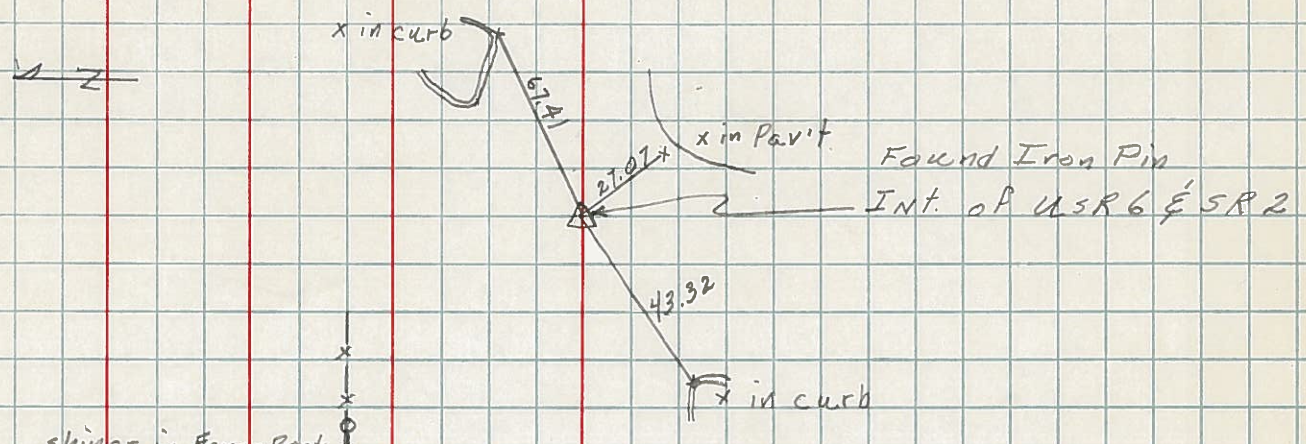
Found Shiner
 LA Fence

PERSONNEL	TITLE	PERSONNEL	TITLE	COUNTY	DATE	WEATHER	TEMP.
Hoover		Mohler		Wms	12-7-60	Cloudy	26°
Ruffer				6			
Delventhal							
Young							

DESCRIPTION _____ LEFT _____ CENTER LINE _____ RIGHT _____ JOB NO. _____

104.

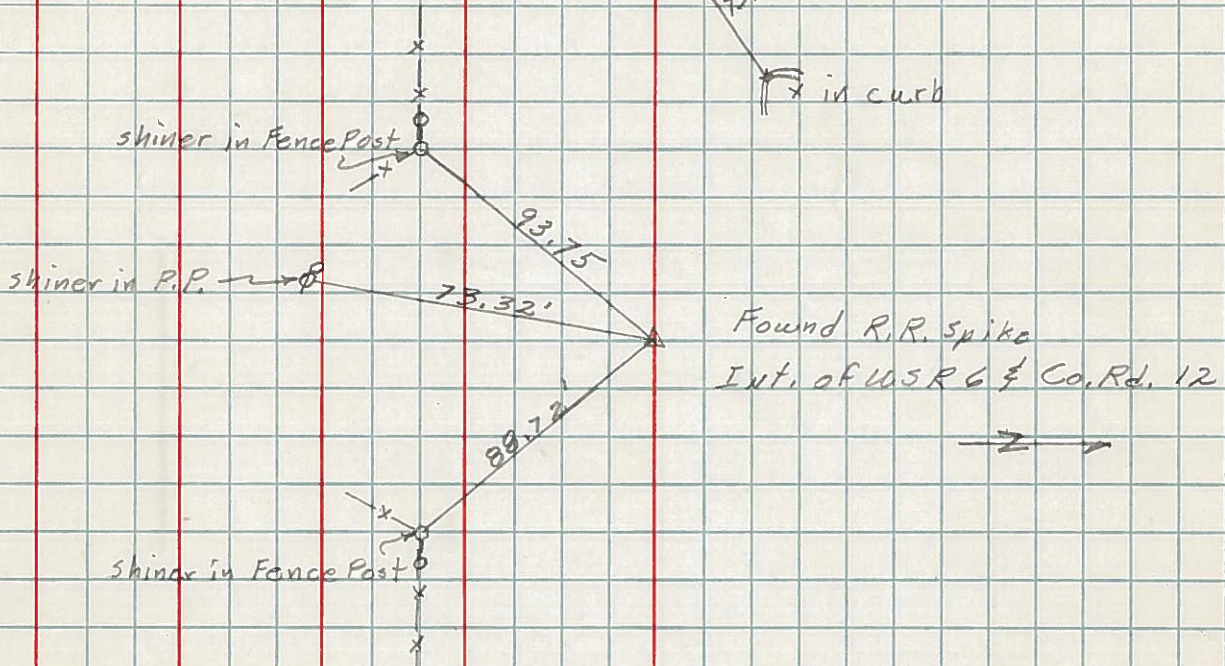
11-B



Found Iron Pin
Int. of USR 6 & SR 2

105.

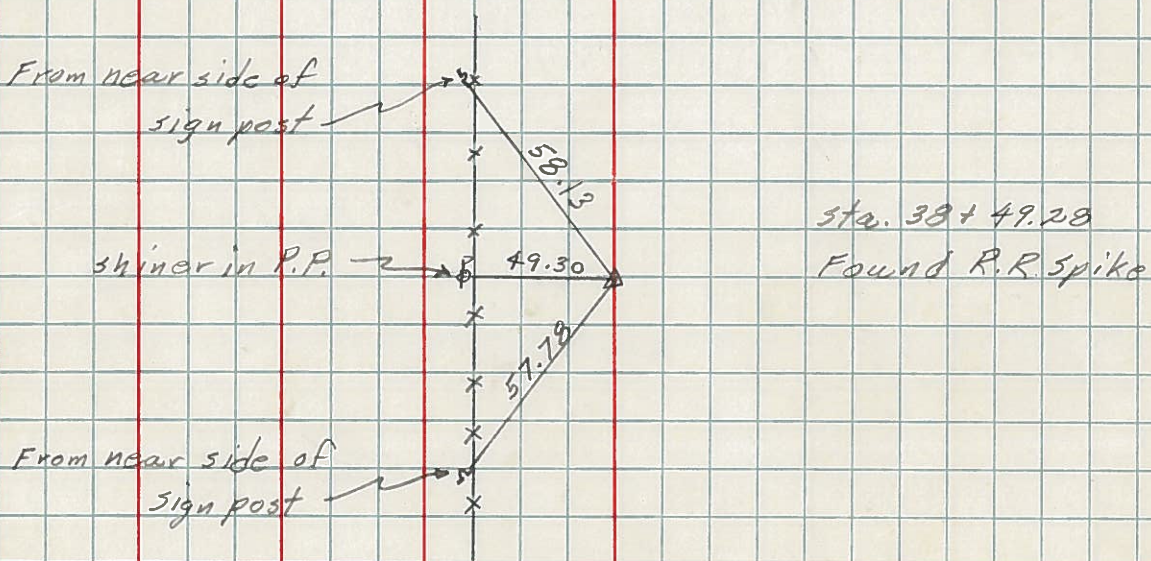
12



Found R.R. Spike
Int. of USR 6 & Co. Rd. 12

106.

12-A



Sta. 38+49.28
Found R.R. Spike

PERSONNEL TITLE PERSONNEL TITLE

Louys

COUNTY Wii.

DATE 9-9-57

S. R. 6

WEATHER

SEC. Relocation over Rt. 384

TEMP. 60°

DESCRIPTION Witnesses to control Points.

LEFT

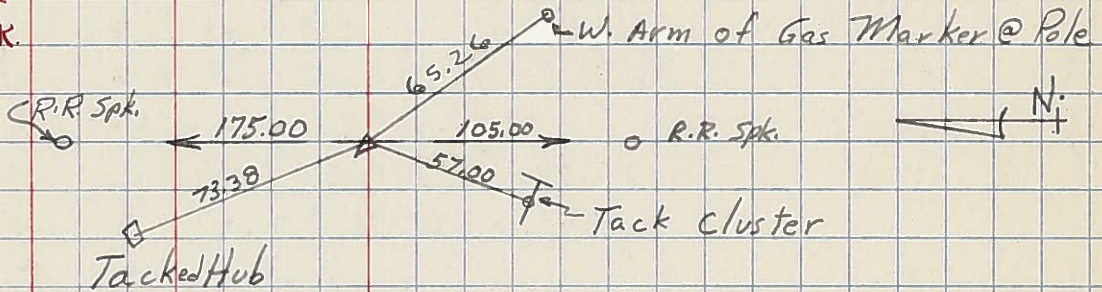
CENTER LINE

RIGHT

JOB NO.

107 SAME AS No 62
IN Field Book.
P.I. - sta. 65+17.72
 $\Delta = 0^\circ - 35' \text{LT.}$

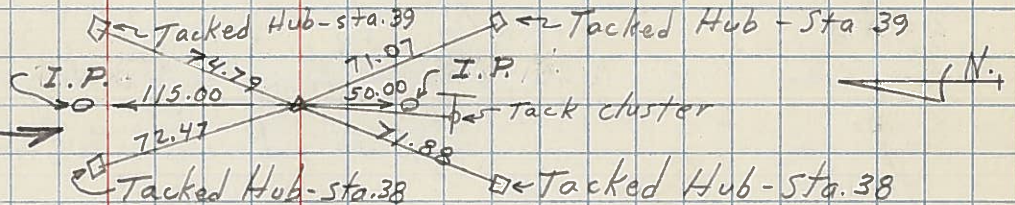
(13)



106
P.I. - sta. 38+49.50
 $\Delta = 0^\circ - 12' \text{LT.}$

IRON PIN.

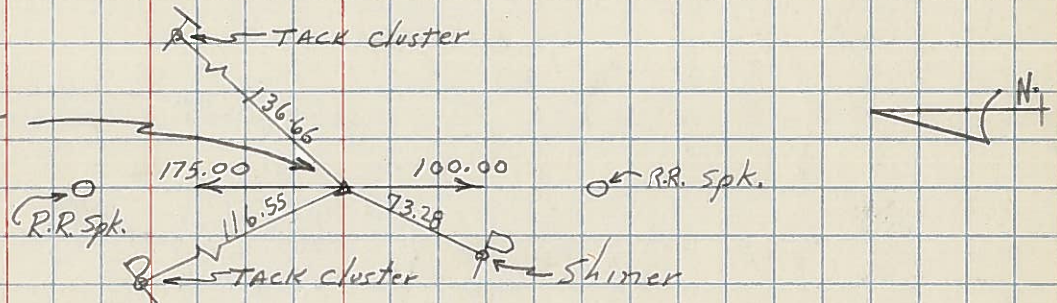
(12-A)



105 SAME AS No. 61
IN Field Book.
P.I. - sta. 11+84.65
 $\Delta = 0^\circ - 01' \text{RT.}$

IRON ROD OVER STONE

(12)



104
P.I. - sta 0+00
Iron Pin
($\&$ INT'N Pt. #6
& Pt. #2)

(11-B)

