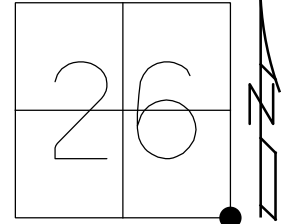


O.D.O.T. DISTRICT 2 SURVEY OFFICE (USE ONLY)

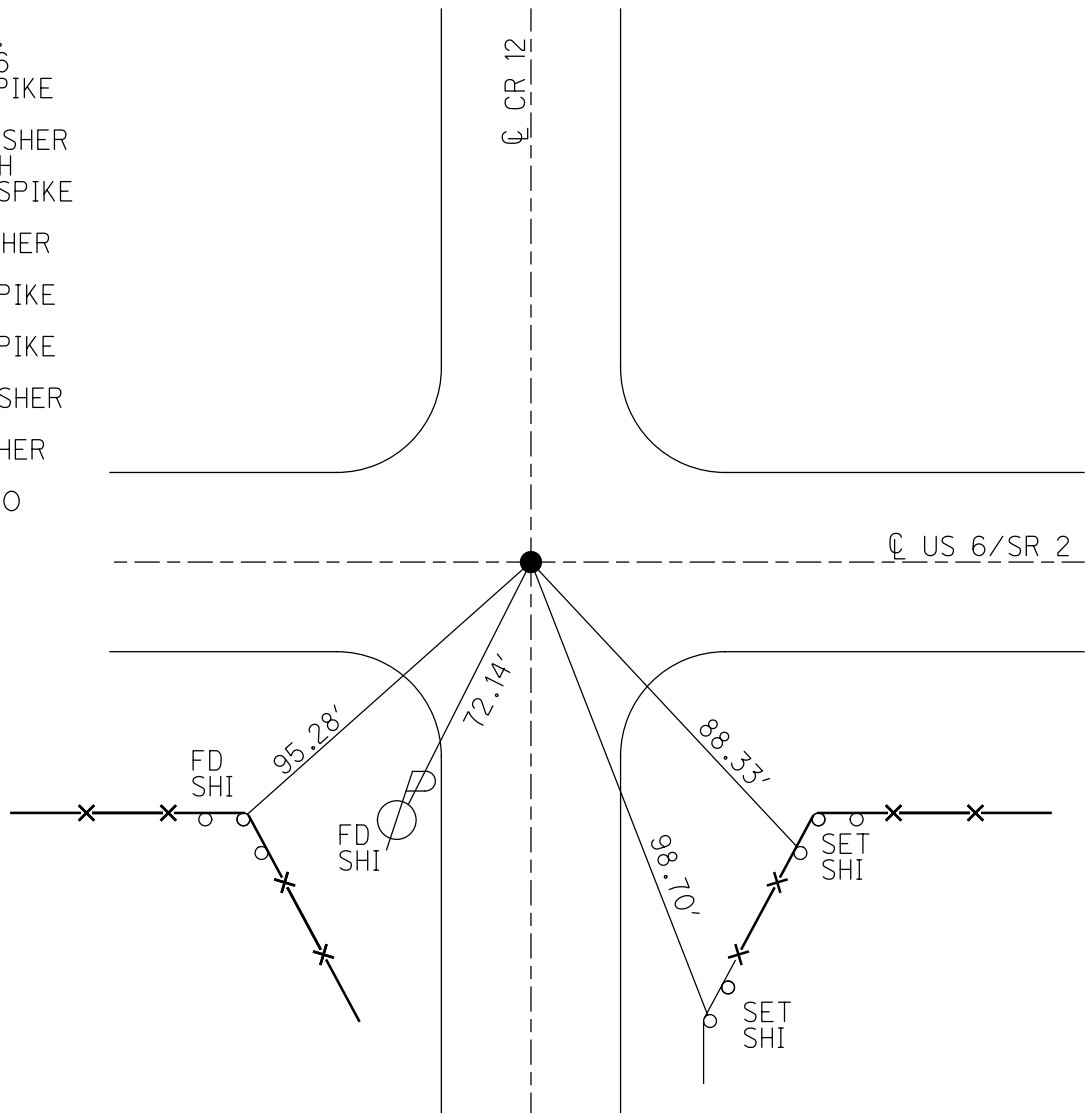
PERSONNEL _____ REFERENCE NO. 12 SHEET 34 OF 41
 NOTES RHOADES DATE 7/17/18 ROUTE US 6
 H.C. LEU WEATHER SUNNY COUNTY WILLIAMS
 R.C. HAGEMEYER TEMP. 72° TOWNSHIP CENTER
TRENKA SECTION 26
 DWG BY NIESE PID NO PID T 6 N R 2 E

TYPE MONUMENT SM.R.R.SPIKE
 ON SURFACE - ~~BELOW~~ ON
 OFFSET \varnothing PAVEMENT ON LT : RT
- TO - EDGE PAVEMENT
 STATION: 591+48.39



HORIZ.DATUM: NAD83 2011 GEOID: NAVD88 2012A
 GRID: NORTHING: 653476.615 EASTING: 1394665.948

RECORD: P.I.
 STA.592+41.6
 FD LG.R.R.SPIKE
 4.5" DOWN
 SET P.K./WASHER
 12/7/90, SWH
 SET SM.R.R.SPIKE
 11/2/98, MB
 FD P.K./WASHER
 6/9/06, MB
 FD SM.R.R.SPIKE
 8/16/12
 FD SM.R.R.SPIKE
 5/1/17, JLL
 SET MAG/WASHER
 11/6/19, JLL
 FD MAG/WASHER
 REF12
 12/18/20, JFO

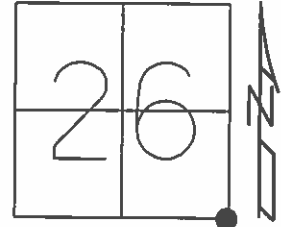


O.D.O.T. DISTRICT 2 SURVEY OFFICE (USE ONLY)

PERSONNEL _____ REFERENCE NO. 12 SHEET 5 OF 12

NOTES BARNHESEL DATE 06-09-2006 ROUTE US 6
 H.C. CANTERBURY WEATHER CLOUDY COUNTY WILLIAMS
 R.C. CORDES TEMP. 72°F TOWNSHIP CENTER
 SECTION 26
 T 6 N R 2 E

TYPE MONUMENT PK & WASHER
 ON SURFACE - ~~BELOW~~ ON
 LEFT - ☉ PAV'T - RIGHT ON
- TO - EDGE PAVEMENT
 S.L.M. 415+15.52



Grid: Northing: 653476.6350 Easting: 1394665.8997

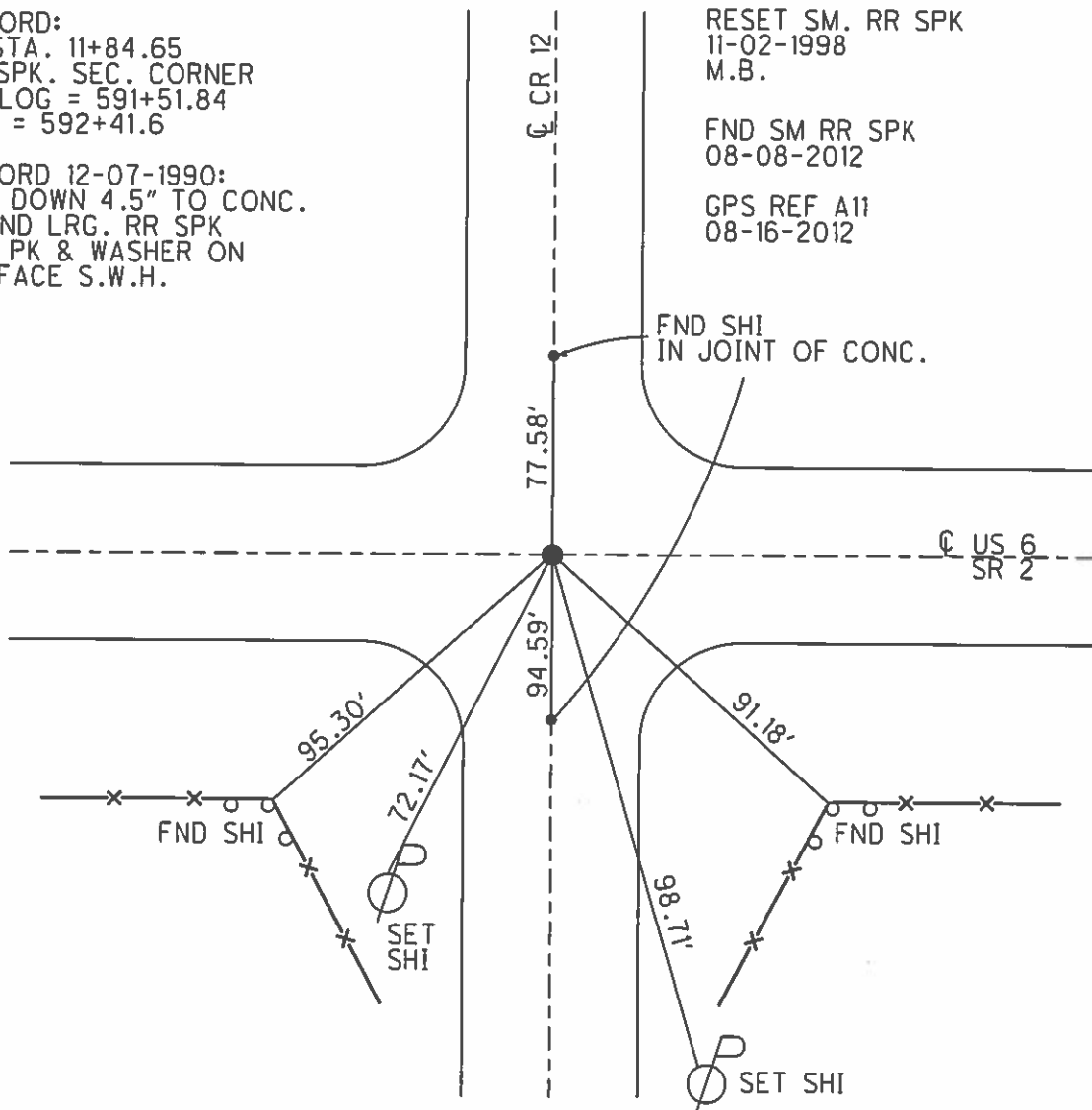
RECORD:
 PI STA. 11+84.65
 RR SPK. SEC. CORNER
 TRULOG = 591+51.84
 SLM = 592+41.6

RECORD 12-07-1990:
 DUG DOWN 4.5" TO CONC.
 FOUND LRG. RR SPK
 SET PK & WASHER ON
 SURFACE S.W.H.

RESET SM. RR SPK
 11-02-1998
 M.B.

FND SM RR SPK
 08-08-2012

GPS REF A11
 08-16-2012



O.D.O.T. DISTRICT 2 SURVEY OFFICE

PERSONNEL _____

REFERENCE NO. 12

SHEET 5 OF 12

NOTES Barnhiser

H.C. Canterbury

R.C. CORDS

DATE 6-9-06

WEATHER Cloudy

TEMP. +72°F

ROUTE U.S. 6

COUNTY Williams

TOWNSHIP Center

SECTION 26

T. 6 N R. 2 E

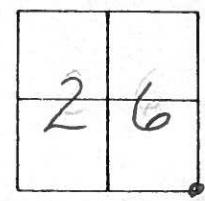
TYPE MONUMENT PK & WASHER

ON SURFACE - ~~BELOW~~ YES

~~LEFT~~ & PAV'T. - ~~RIGHT~~ YES

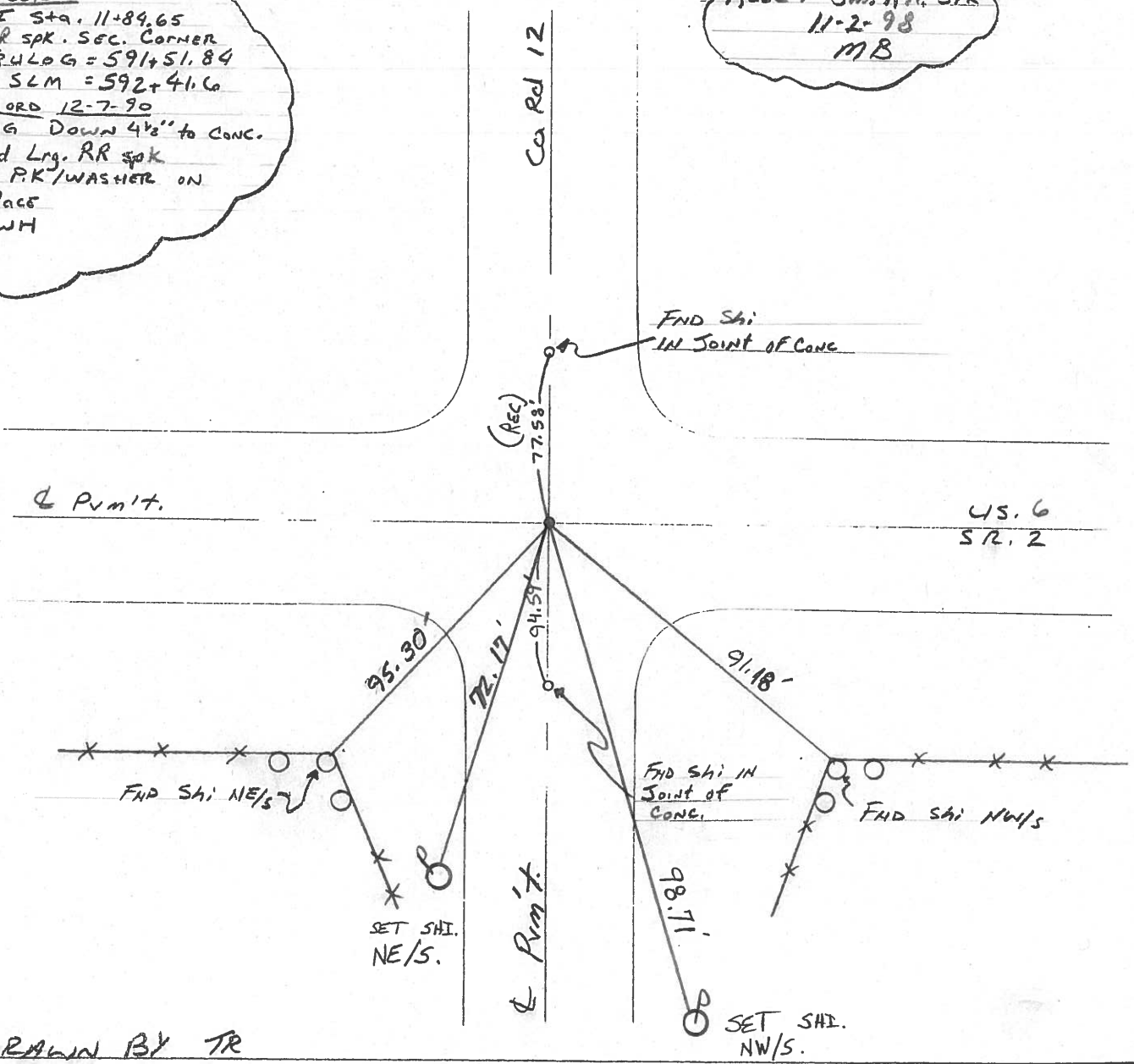
— TO — EDGE PAVEMENT ON &

S.L.M. 591+42.55



RECORD
 PI Sta. 11+89.65
 RR SPK. SEC. CORNER
 TR. LOG = 591+51.84
 SLM = 592+41.6
RECORD 12-7-90
 DUG DOWN 4 1/2" TO CONC.
 Found Lrg. RR SPK
 SET PK/WASHER ON
 SURFACE
 SWH

RESET Sm. RR. SPK
 11-2-98
 MB



DRAWN BY TR

O.D.O.T. DISTRICT 2 SURVEY OFFICE

PERSONNEL _____

REFERENCE NO. 12

SHEET 5 OF 11

NOTES BARNHISEL

H.C. CANTERBURY

R.C. CORDS

DATE 11-20-95

WEATHER Cloudy

TEMP. +4° C

ROUTE U.S. 6

COUNTY WILLIAMS

TOWNSHIP CENTER

SECTION 26

T 6 N R 2 E

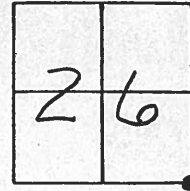
TYPE MONUMENT P.K. & WASHER

ON SURFACE - ~~BELOW~~ yes

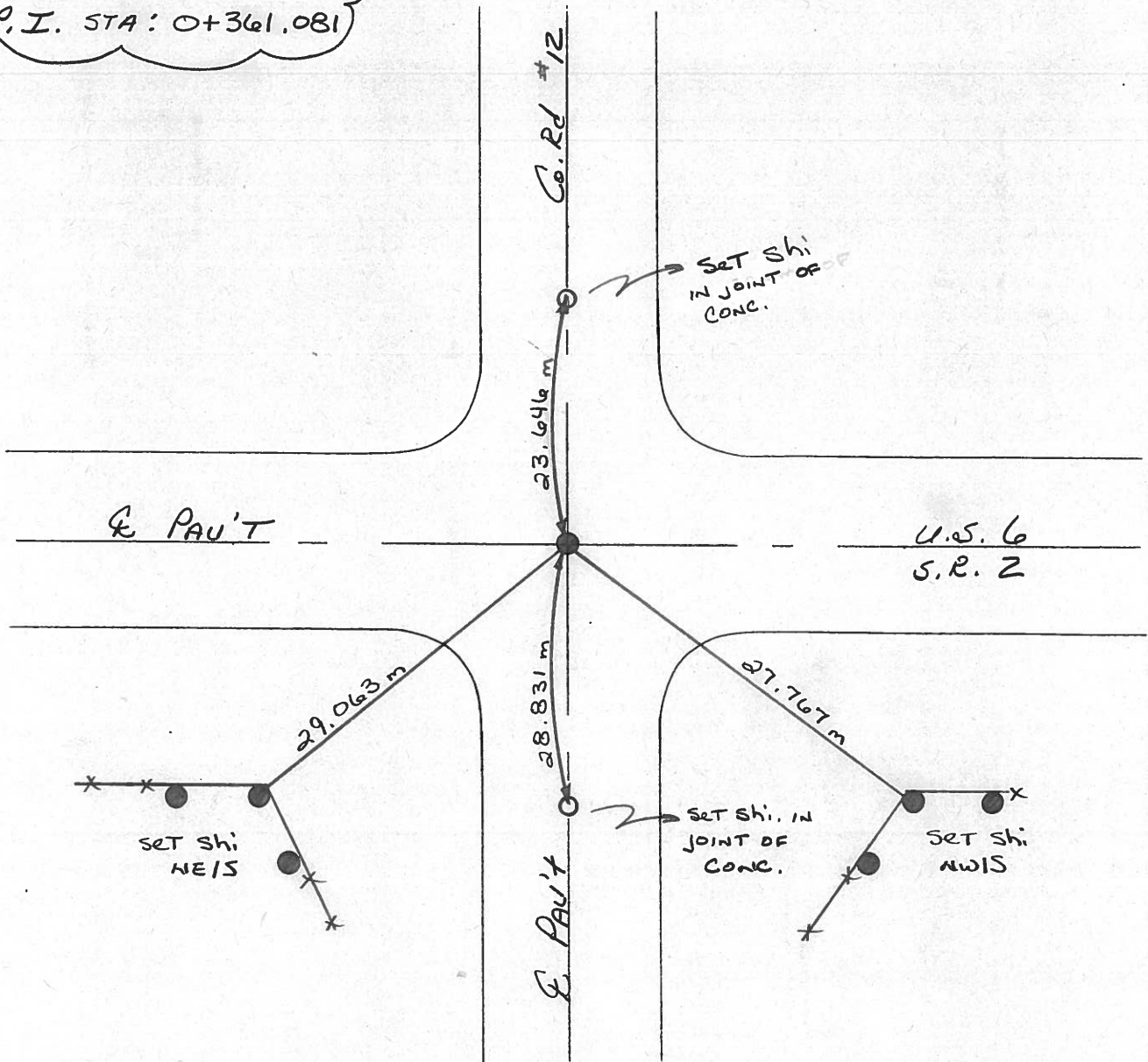
~~LEFT - & PAV'T. - RIGHT~~ yes

- TO - EDGE PAVEMENT

S.L.M. 18+007.499



RECORD:
P.I. STA: 0+361.081



O.D.O.T. DISTRICT 2 SURVEY OFFICE

PERSONNEL

REFERENCE NO. 12

SHEET OF

NOTES HOFFMAN

H.C. BARWISSEL

DATE 10-14-88

ROUTE US 6

R.C. LOSHRKE

WEATHER CLEAR

COUNTY WILLIAMS

TEMP. 46°

TOWNSHIP CENTER

SECTION 25

T. 6 N. R. 2 E.

TYPE MONUMENT SMALL R.R. SPICES

ON SURFACE - BELOW YES

~~LEFT~~ - ~~PAV'T.~~ - ~~RIGHT~~ YES

TO EDGE PAVEMENT

S.L.M. 590 + 95

26	25
35	36

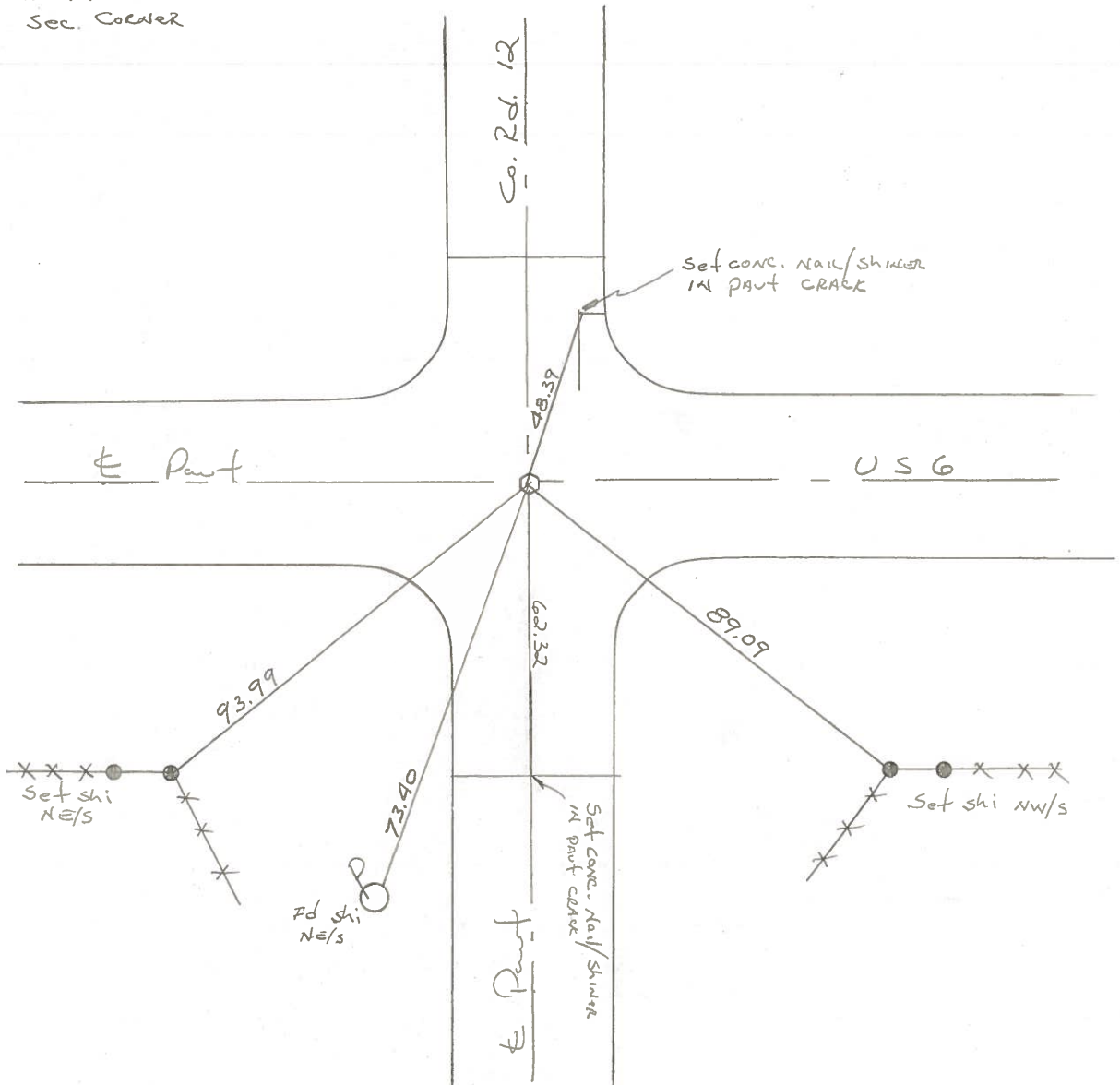


RECORD:

P.I. STA. 11+84.65

RR SPK Sec. CENTER

Set SMALL RR SPK
11-23-88 SWH



PERSONNEL TITLE PERSONNEL TITLE

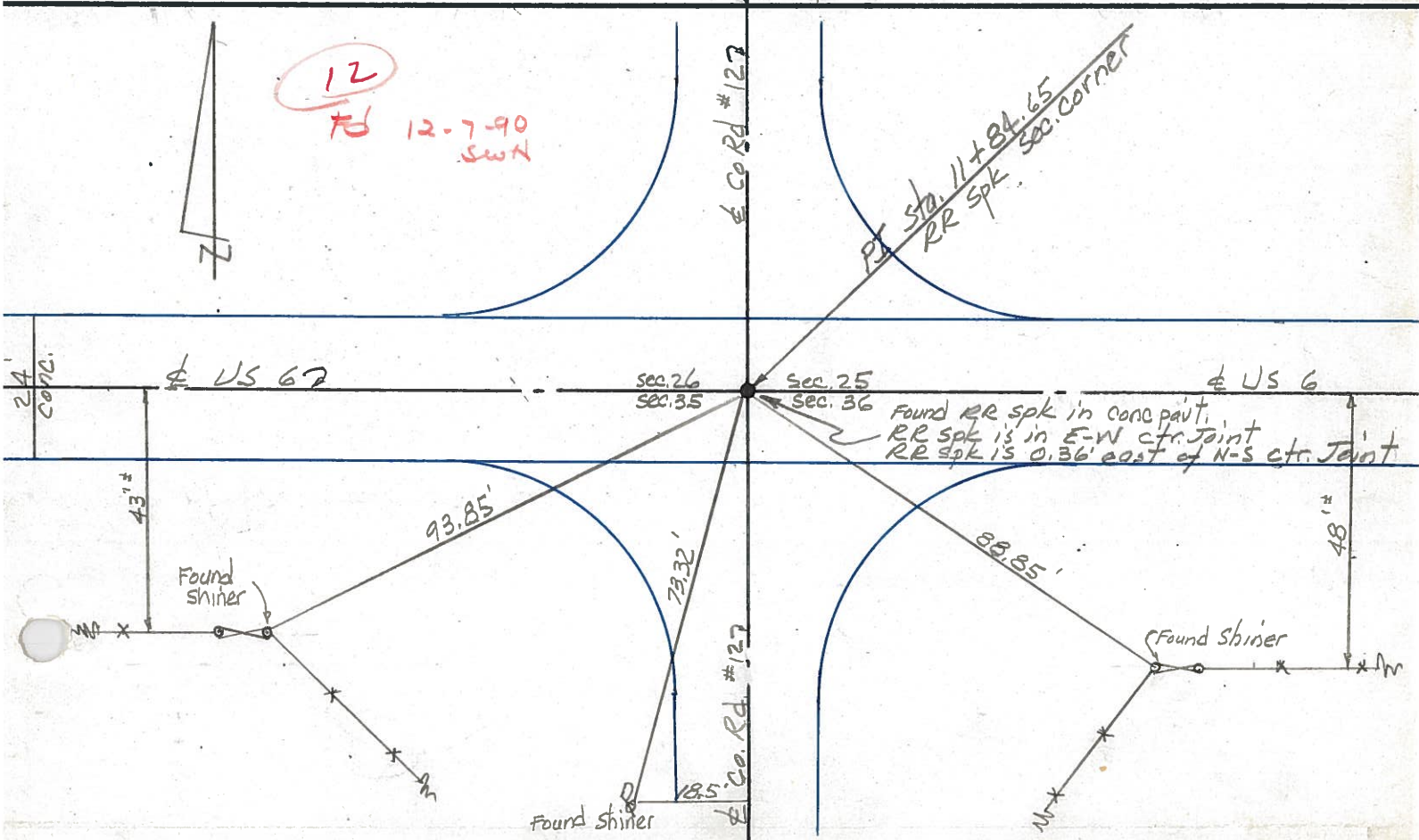
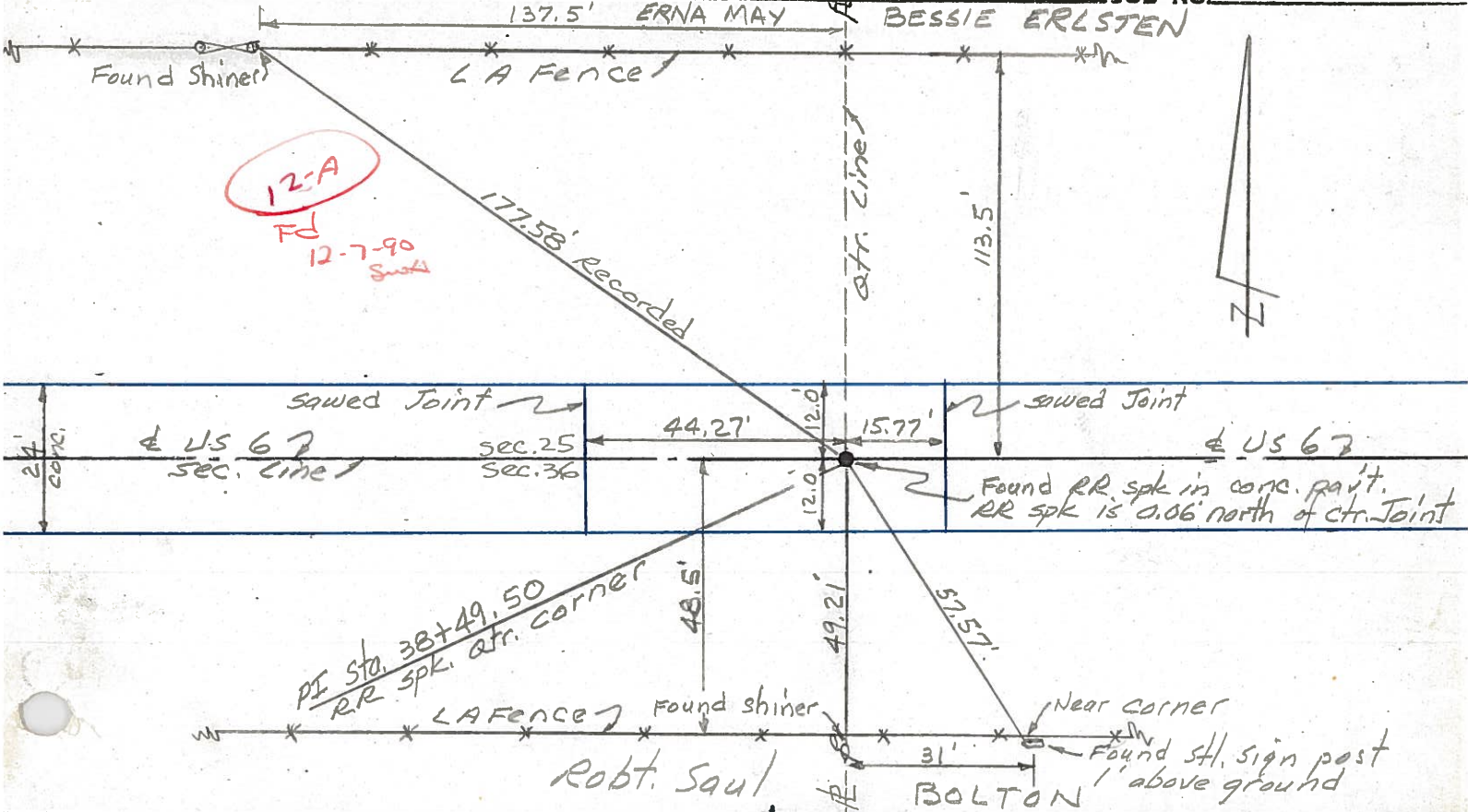
Red Beach
W. Knappe

COUNTY Williams DATE Dec. 1975

S. R. US 6 WEATHER

SEC. CENTER TWP. TEMP

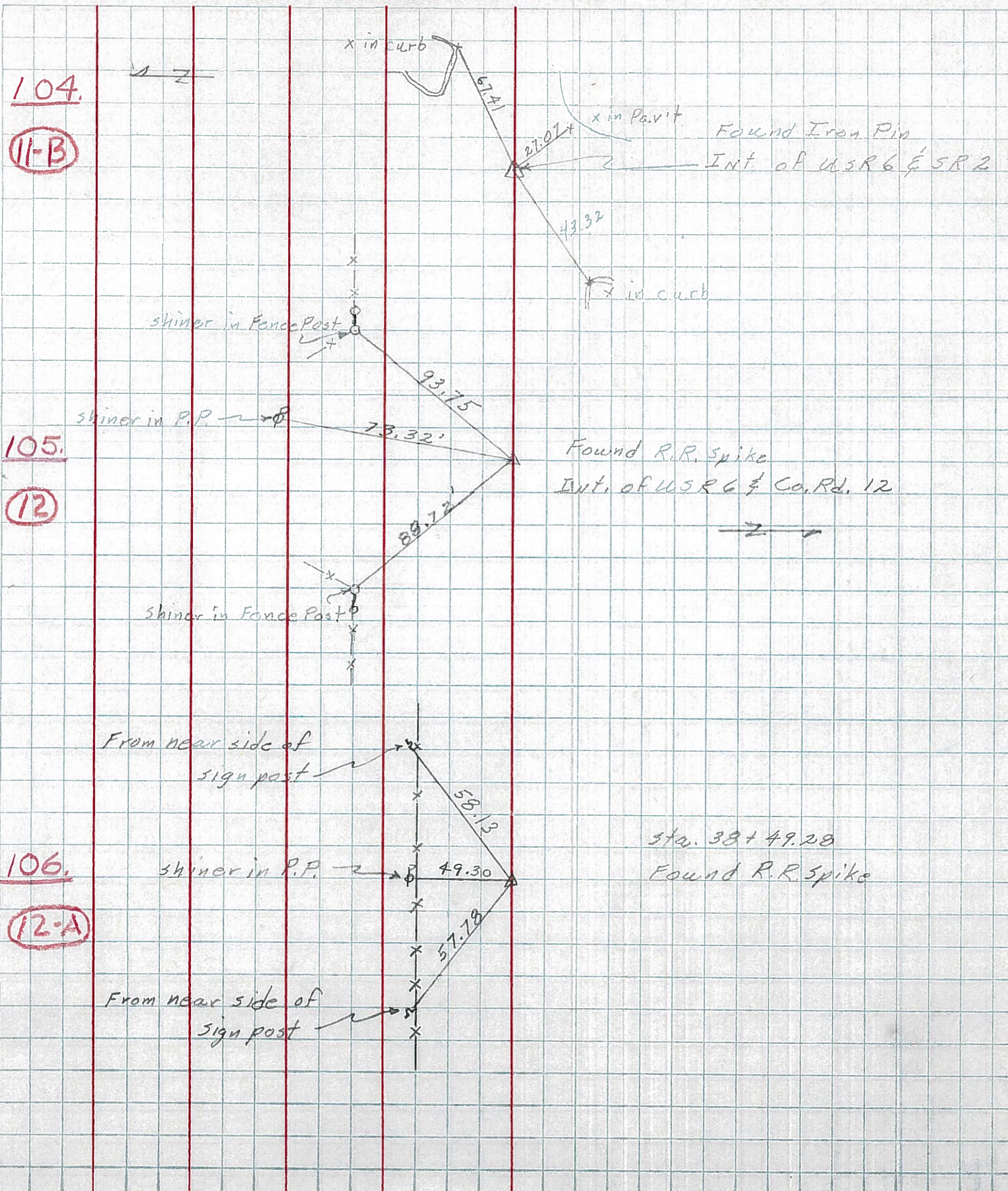
DESCRIPTION CONTROL POINTS JOB NO. BESSIE ERLSTEN



PERSONNEL	TITLE	PERSONNEL	TITLE
Hoover		Mahler	
Ruffer			
Delventhal			
Young			

COUNTY Wms DATE 12-7-60
 S. R. 6 WEATHER Cloudy
 SEC. _____ TEMP. 26°

DESCRIPTION _____ LEFT _____ CENTER LINE _____ RIGHT _____ JOB NO. _____



104.

11-B

105.

12

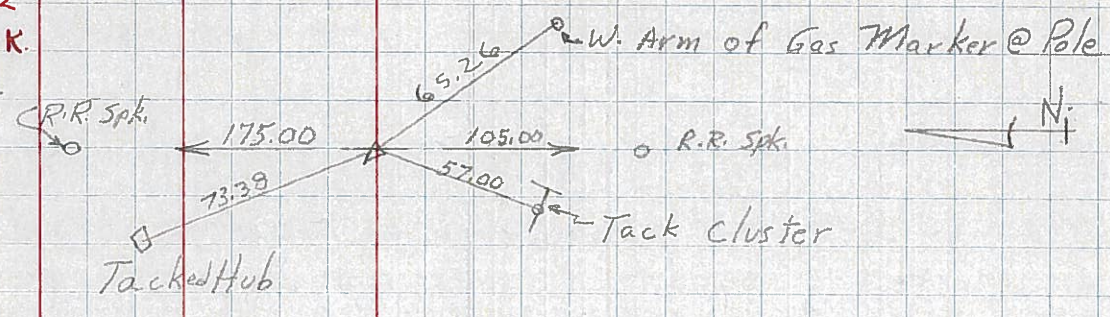
106.

12-A

PERSONNEL	TITLE	PERSONNEL	TITLE	COUNTY	DATE	WEATHER	TEMP.
Louys				Wii	9-9-57		60°
				S. R. 6			
				SEC. Relocation over Rt. 384			
DESCRIPTION	Witnesses to control points.			JOB NO.			
	LEFT	CENTER LINE	RIGHT				

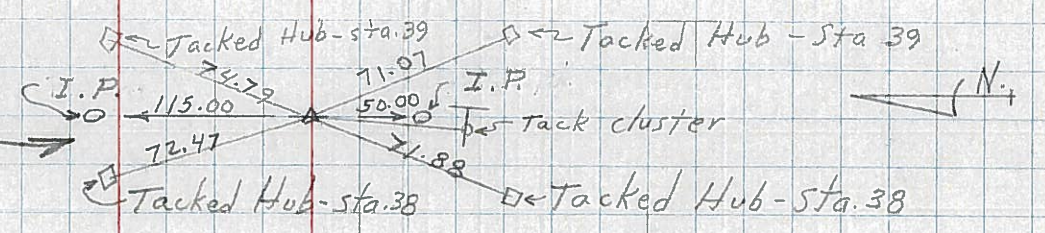
107 SAME AS No 62
IN Field Book.
P.I. - sta. 65+17.72
 $\Delta = 0^{\circ} - 35' \text{ LT.}$

(13)



106
P.I. - Sta. 38+49.50
 $\Delta = 0^{\circ} - 12' \text{ LT.}$

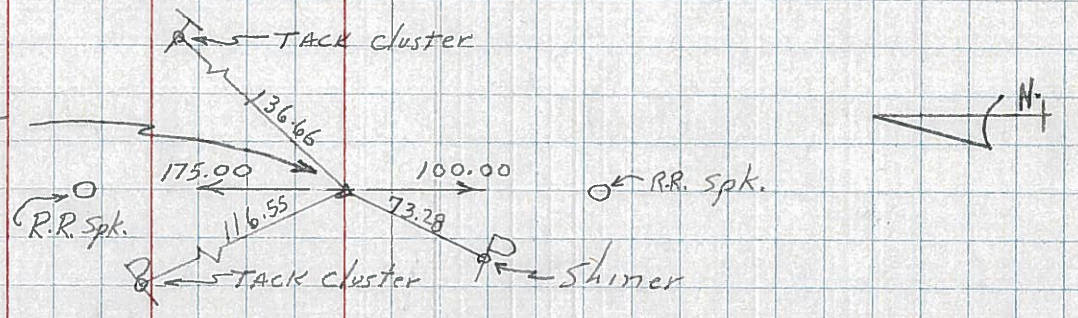
IRON PIN.
(12-A)



105 SAME AS No. 61
IN Field Book.
P.I. - sta. 11+84.65
 $\Delta = 0^{\circ} - 01' \text{ RT.}$

IRON ROD OVER STONE

(12)



104
P.I. - sta 0+00
Iron Pin
($\&$ INT 'x' in Rt. #6
& Rt. #2)

(11-B)

