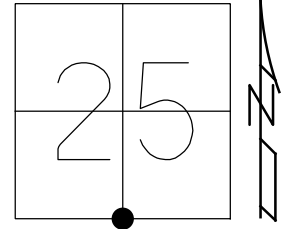


O.D.O.T. DISTRICT 2 SURVEY OFFICE (USE ONLY)

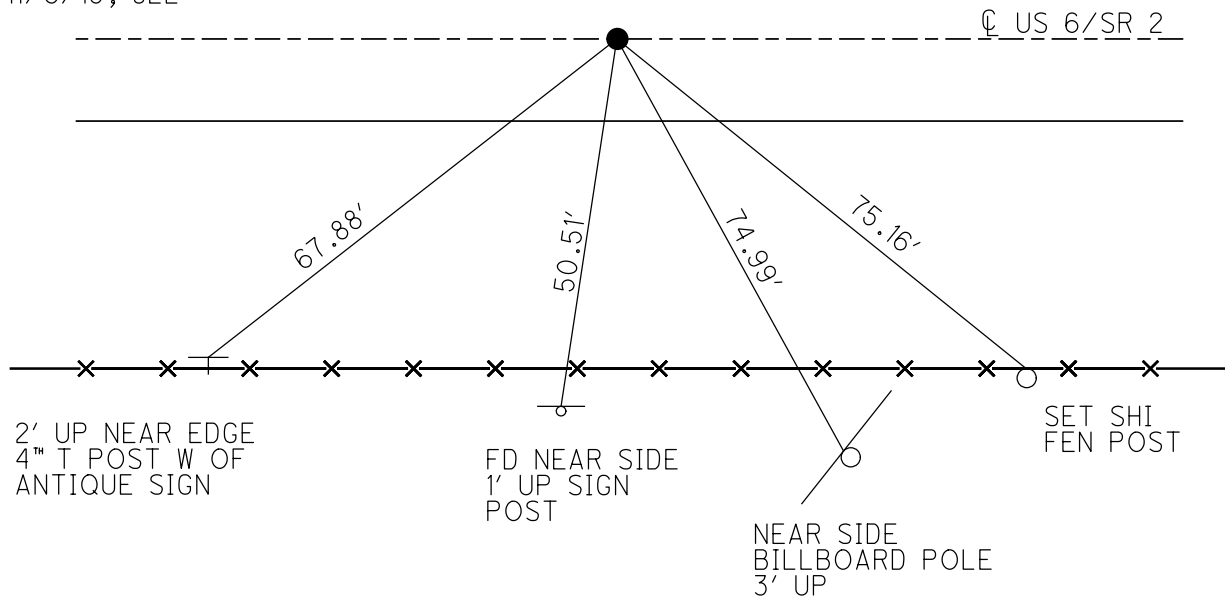
PERSONNEL _____ REFERENCE NO. 12 A SHEET 35 OF 41
 NOTES AUBLE DATE 11/6/19 ROUTE US 6
 H.C. LEU WEATHER CLOUDY COUNTY WILLIAMS
 R.C. NASON TEMP. 37° TOWNSHIP CENTER
 DWG BY NIESE PID 102827 SECTION 25
 T 6 N R 2 E

TYPE MONUMENT P.K./WASHER
 ON SURFACE - ~~BELOW~~ ON
 OFFSET ☉ PAVEMENT ON LT : RT
12.3' TO RT EDGE PAVEMENT
 STATION: 618+13.11



HORIZ.DATUM: NAD83 2011 GEOID: NAVD88 2012A
 GRID: NORTHING: 653416.123 EASTING: 1397329.757

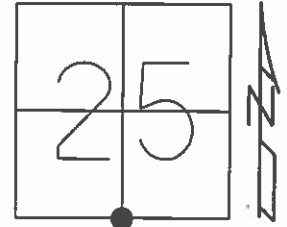
RECORD: P.I.
 STA.38+49.50
 FD LG.R.R.SPIKE
 4" DOWN
 SET P.K./WASHER
 12/7/90, SWH
 FD P.K./WASHER
 11/20/95, MB
 SET P.K./WASHER
 12/15/98, MB
 FD P.K./WASHER
 REFA12
 8/16/12
 D.N.F.
 5/1/17, JLL
 SET MAG/WASHER
 REFA12
 11/6/19, JLL



O.D.O.T. DISTRICT 2 SURVEY OFFICE (USE ONLY)

PERSONNEL _____ REFERENCE NO. 12 A SHEET 6 OF 12
 NOTES BARNHISEL DATE 11-20-1995 ROUTE US 6
 H.C. CANTERBURY WEATHER CLOUDY COUNTY WILLIAMS
 R.C. CORDES TEMP. 39°F TOWNSHIP CENTER
 _____ SECTION 25
 _____ T 6 N R 2 E

TYPE MONUMENT PK & WASHER
 ON SURFACE - ~~BELOW~~ ON
 LEFT - ☉ PAV'T - RIGHT ON
12.3' TO RT EDGE PAVEMENT
 S.L.M. 441+80.03



Grid: Northing: 653416.1532 Easting: 1397329.7245

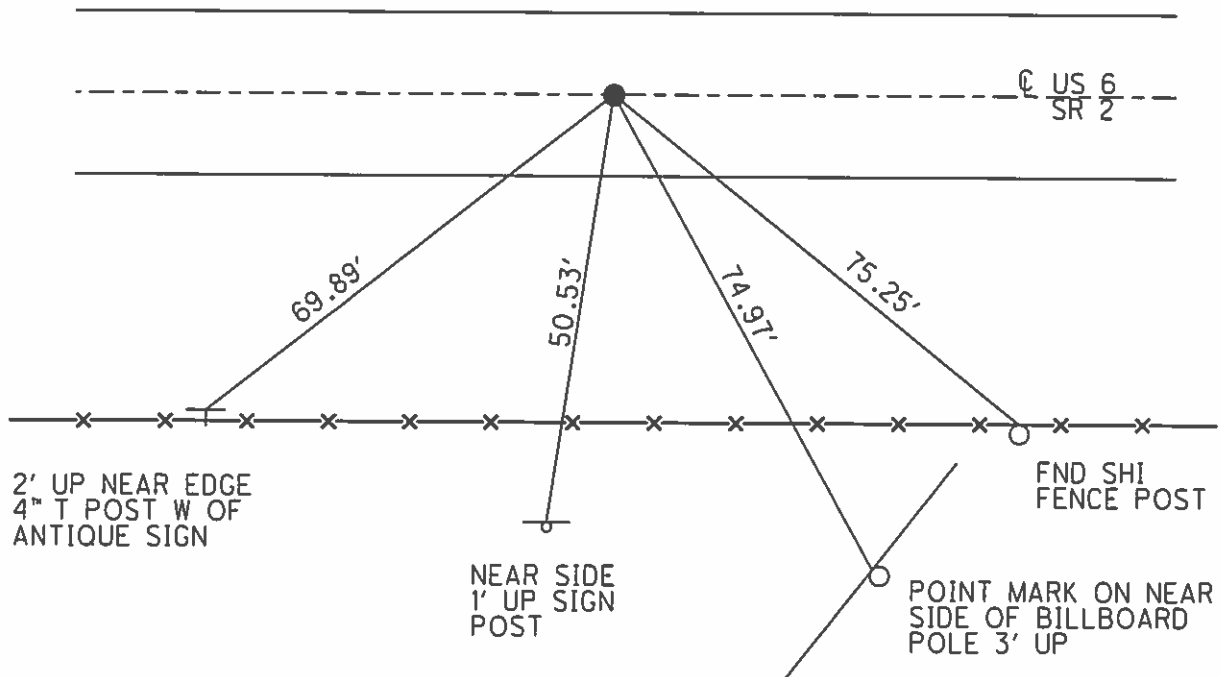
RECORD:
 PI STA. 38+49.50
 RR SPK. QTR CORNER

RESET PK & WASHER
 12-15-1998
 M.B.

RECORD 12-07-1990:
 DUG DOWN 4" TO CONC.
 FOUND LRG. RR SPK
 SET PK & WASHER ON
 SURFACE S.W.H.

FND
 08-08-2012

GPS REFA12
 08-16-2012



O.D.O.T. DISTRICT 2 SURVEY OFFICE

PERSONNEL

REFERENCE NO. 12-A

SHEET 6 OF 12

NOTES Barnhiser

H.C. Canterbury

DATE 11-20-95

ROUTE U.S. 6

R.C. CORDS

WEATHER Cloudy

COUNTY Williams

TEMP. 39°F

TOWNSHIP CENTER

SECTION 25

T 6 N R 2 E

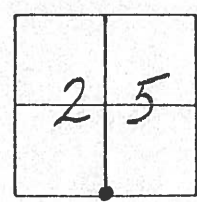
TYPE MONUMENT PK/WASHER

ON SURFACE - BELOW YES

LEFT- & PAV'T. - RIGHT YES

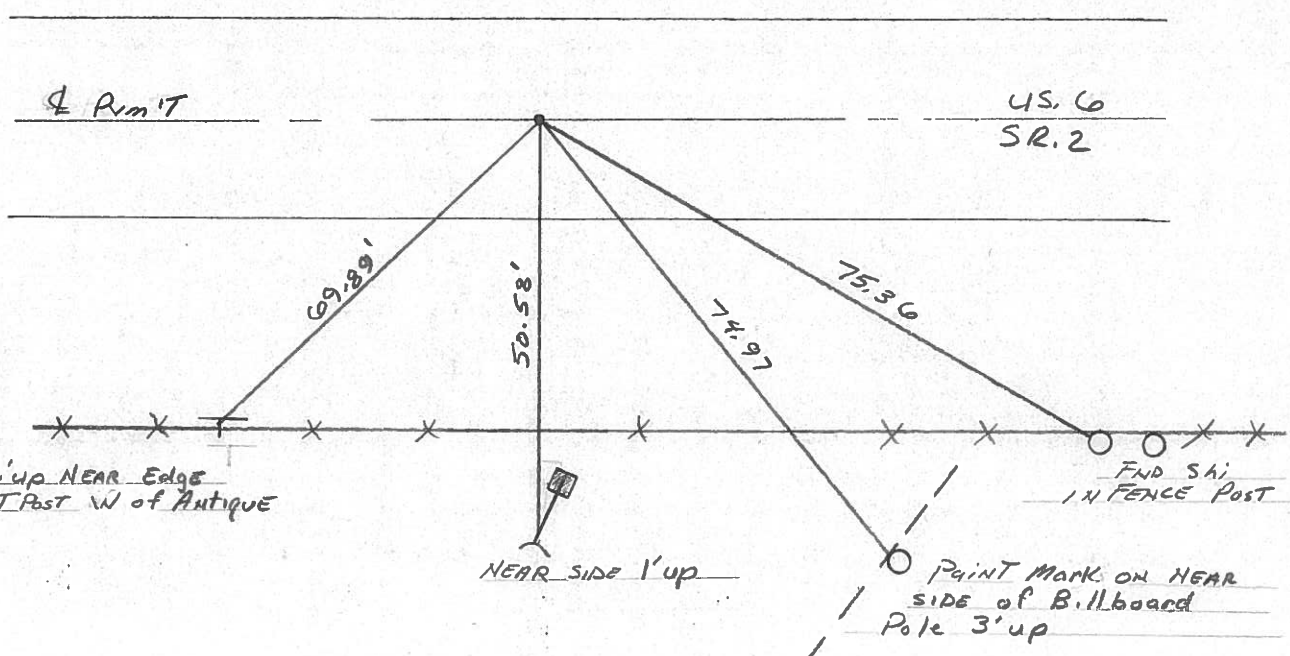
12.3' TO RT EDGE PAVEMENT

S.L.M. 618+07.13



RECORD:
P.I. Sta 38+49.50
RR Spk. QTR CORNER
RECORD 12-7-90:
Dug Down 4" to Conc punit
Fd. Lg. RR spk
SET PK/WASHER @ SURFACE
SWH

RESET PK/WASHER
12-15-98
M.B.



DRAWN BY TR

O.D.O.T. DISTRICT 2 SURVEY OFFICE

PERSONNEL

REFERENCE NO. 12-A

SHEET 6 OF 11

NOTES BARNHISEL

H.C. CANTERBURY

R.C. CORDS

DATE 11-20-95

WEATHER Cloudy

TEMP. +4° C

ROUTE U.S. 6

COUNTY WILLIAMS

TOWNSHIP Center

SECTION 25

T 6 N R 2 E

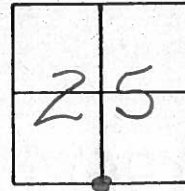
TYPE MONUMENT P.K. & WASHER

ON SURFACE - ~~BELOW~~ yes

~~LEFT~~ - & PAV'T. - ~~RIGHT~~ yes

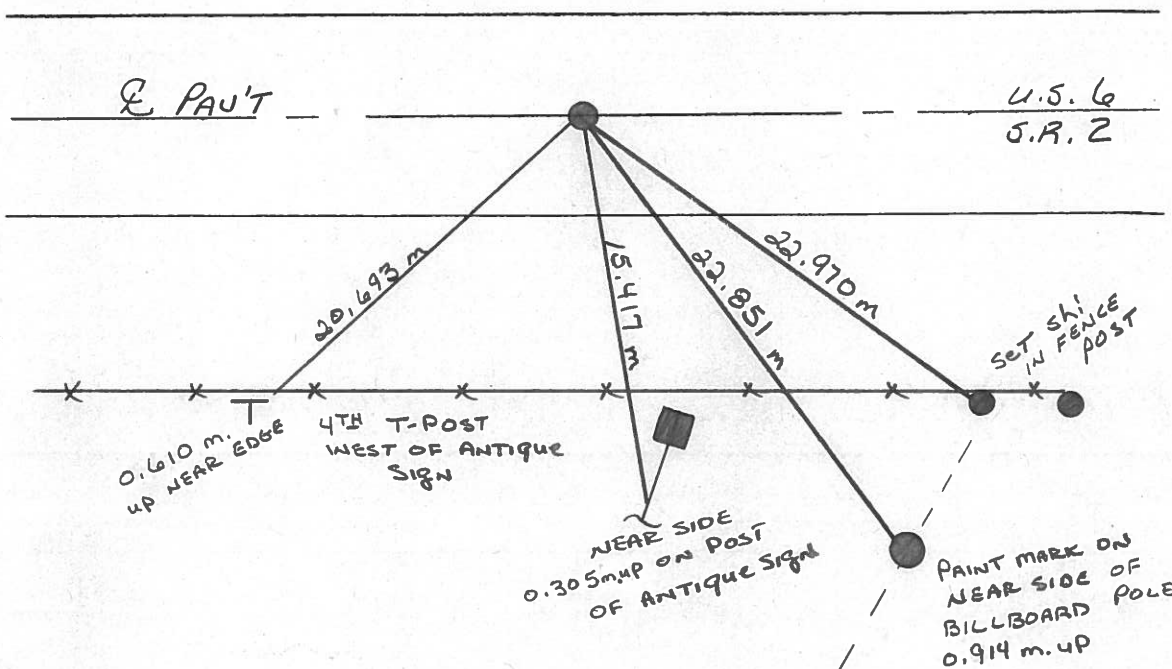
3.74 m TO RT EDGE PAVEMENT

S.L.M. 18+819.765



RECORD:

P.I. STA: 1+173.327



O.D.O.T. DISTRICT 2 SURVEY OFFICE

PERSONNEL _____

REFERENCE NO. _____

SHEET _____ OF _____

NOTES HOFFMAN

H.C. BARNTISEL

R.C. LOEHRKE

DATE 10-14-88

WEATHER CLEAR

TEMP. 46°

ROUTE U.S. 6

COUNTY WILLIAMS

TOWNSHIP CENTER

SECTION 25

T 6 N R 2 E

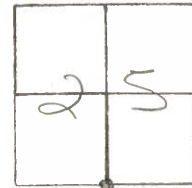
TYPE MONUMENT SMALL R.R. SPIKE

ON SURFACE - BELOW YES

~~LEFT - & PAV'T. - RIGHT~~ YES

12.0 TO LT EDGE PAVEMENT

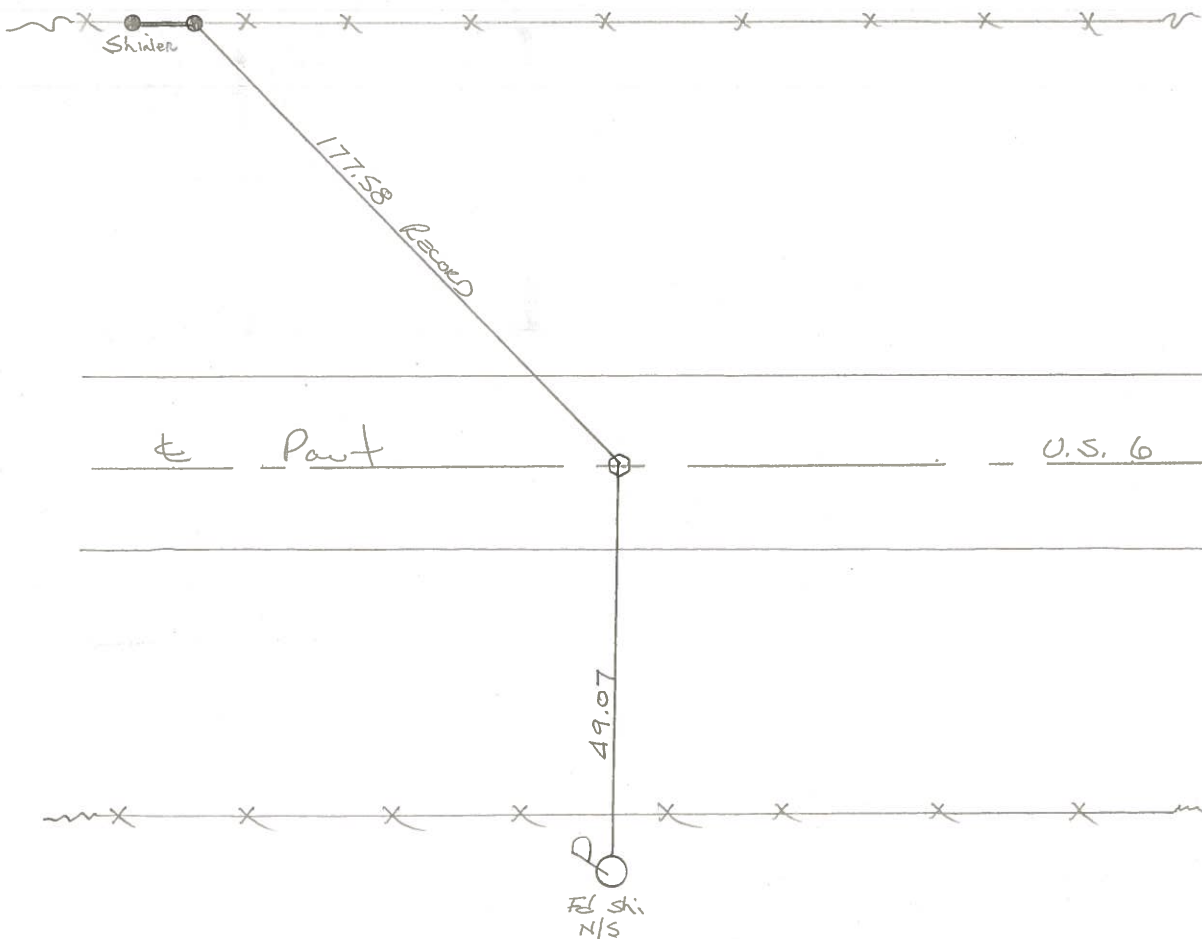
S.L.M. 617+53



RECORD: P.I. sta. 38+49.50
R.R. SPK QTR. CORNER

12-A

Set SMALL RR SPK
11-23-88 SWH



PERSONNEL TITLE PERSONNEL TITLE

Red Beach
W. Krape

COUNTY

Williams

DATE

Dec. 1975

S. R.

US 6

WEATHER

SEC.

CENTER TWP.

TEMP.

DESCRIPTION

CONTROL POINTS

JOB NO.

137.5' ERNA MAY

BESSIE ERLSTEN

Found Shiner

LA Fence

12-A

FD 12-7-90 SWN

177.58' Recorded

ctr. line

113.5'



sawed Joint

sawed Joint

US 67
Sec. line

sec. 25
sec. 36

44.27'

15.77'

Found RR spk in conc. part.
RR spk is 0.06' north of ctr. Joint

PI sta. 38+49.50
RR spk. ctr. corner

48.5'

49.21'

57.57'

LA Fence

Found shiner

Near corner

Found stl. sign post
1' above ground

Robt. Saul

BOLTON

12

FD 12-7-90 SWN



Co. Rd #127

PI sta. 11+84.65
RR spk. sec. corner

US 67

sec. 26
sec. 35

sec. 25
sec. 36

US 6

Found RR spk in conc part.
RR spk is in E-W ctr. Joint
RR spk is 0.36' east of N-S ctr. Joint

93.85'

79.32'

88.85'

Found shiner

Found Shiner

Found shiner

Co. Rd #127

48'

24' CONC.

43'

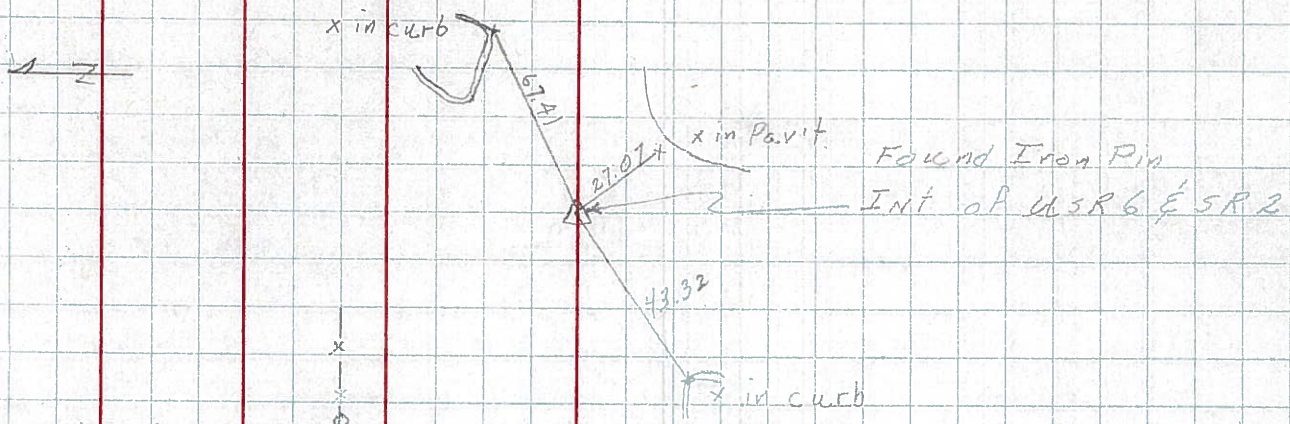
24' CONC.

PERSONNEL	TITLE	PERSONNEL	TITLE	COUNTY	DATE	WEATHER	TEMP.
Hoover		Mahler		Wms	12-7-60	Cloudy	26°
Ruffer				S. R.	6		
Delventhal				SEC.			
Young							

DESCRIPTION _____ LEFT _____ CENTER LINE _____ RIGHT _____ JOB NO. _____

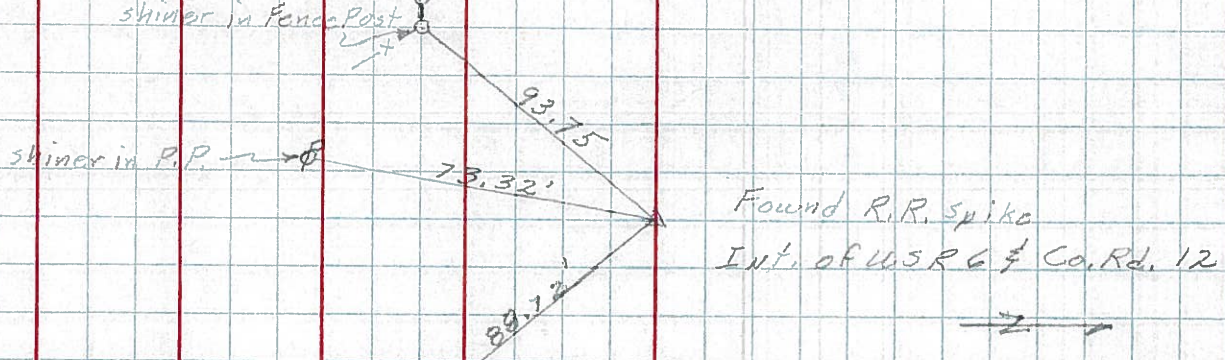
104.

11-B



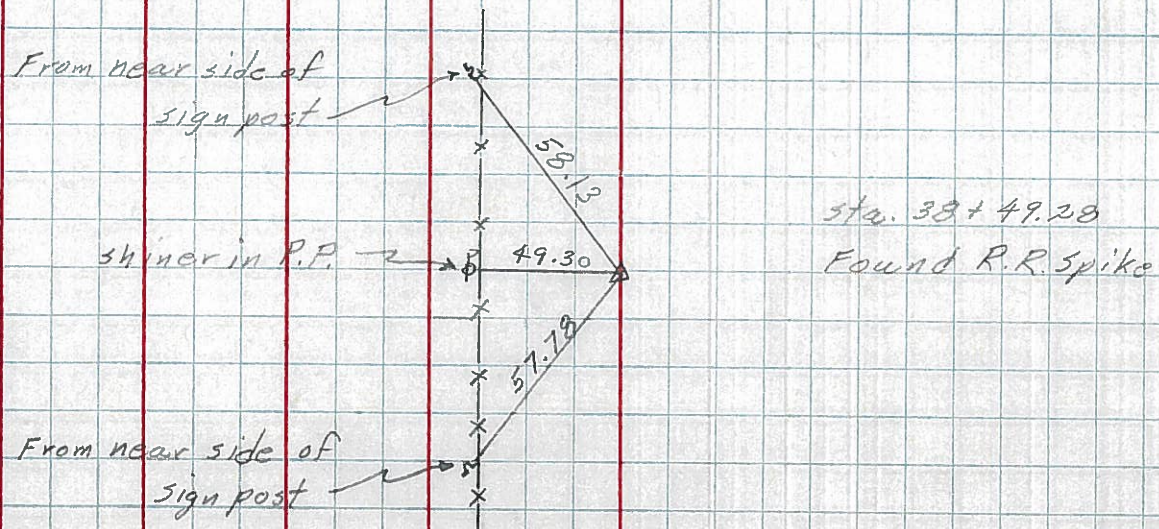
105.

12



106.

12-A



PERSONNEL TITLE PERSONNEL TITLE

Louys

COUNTY Wia

DATE 9-9-57

S. R. 6

WEATHER

SEC. Relocation over Rt. 384

TEMP. 60°

DESCRIPTION Witnesses to control Points.

LEFT

CENTER LINE

RIGHT

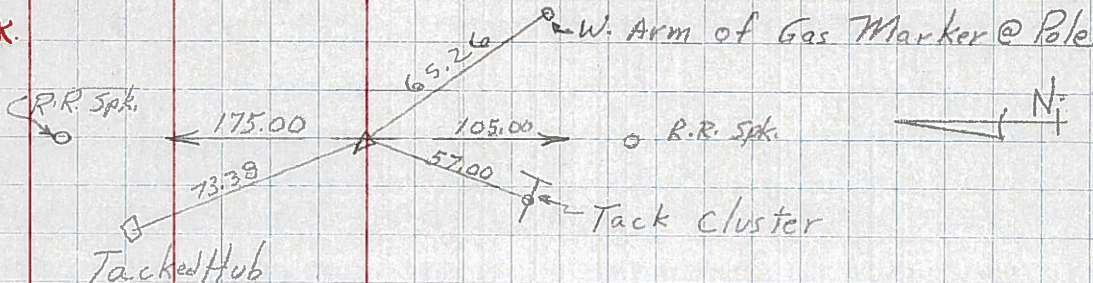
JOB NO.

107 SAME AS No 62 IN Field Book.

P.I. - sta. 65+17.72

Δ = 0°-35' Lt.

13



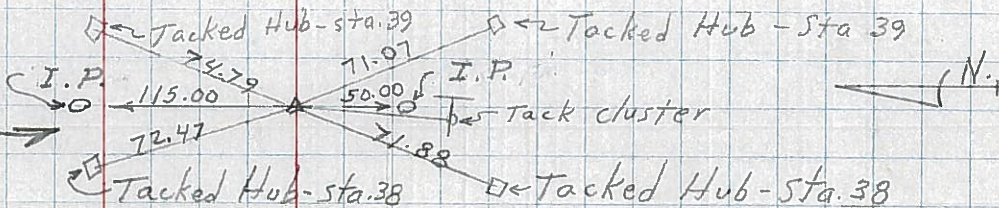
106

P.I. - Sta. 38+49.50

Δ = 0°-12' Lt.

IRON PIN.

12-A



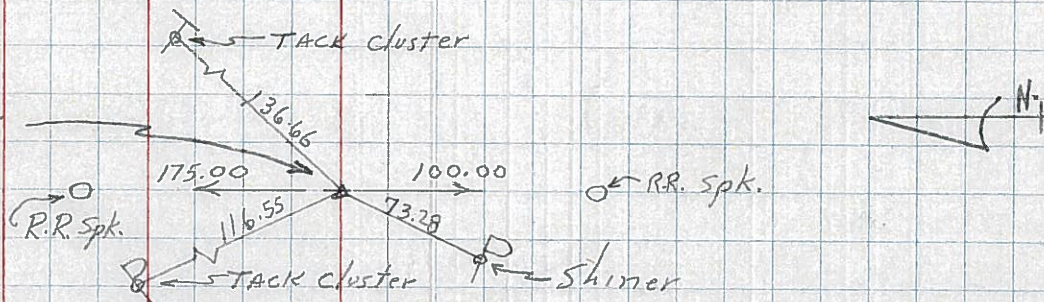
105 SAME AS No 61 IN Field Book.

P.I. - sta. 11+84.65

Δ = 0°-01' Rt.

IRON ROD OVER STONE

12



104

P.I. - sta 0+00

Iron Pin

(E int x'n. Rt. #6

& Rt. #2)

11-B

