

O.D.O.T. DISTRICT 2 SURVEY OFFICE (USE ONLY)

PERSONNEL

REFERENCE NO. 13

SHEET 36 OF 41

NOTES RHOADES

DATE 7/17/18

ROUTE US 6

H.C. LEU

WEATHER SUNNY

COUNTY WILLIAMS

R.C. HAGEMEYER

TEMP. 72°

TOWNSHIP CENTER

TRENKA

DWG BY NIESE

PID 102827

SECTION 25

T 6 N R 2 E

TYPE MONUMENT MAG/WASHER

ON SURFACE - ~~BELOW~~ ON

OFFSET \varnothing PAVEMENT 0.8' LT : ~~RT~~

- TO - EDGE PAVEMENT

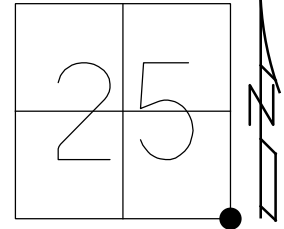
STATION: 644+81.30

HORZ.DATUM: NAD83 2011

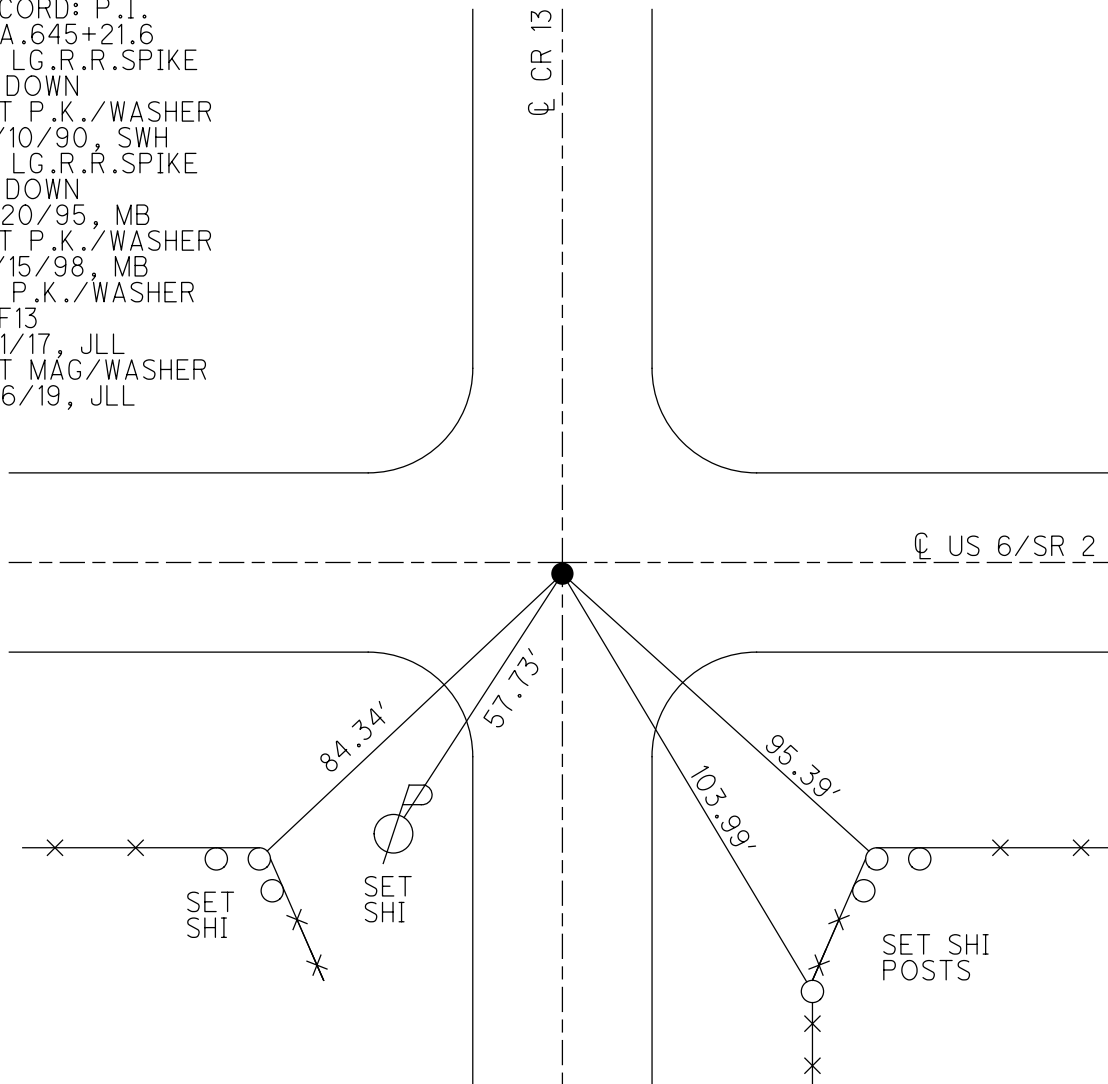
GEOID: NAVD88 2012A

GRID: NORTHING: 653364.768

EASTING: 1399997.279



RECORD: P.I.
 STA. 645+21.6
 FD LG.R.R.SPIKE
 4" DOWN
 SET P.K./WASHER
 12/10/90, SWH
 FD LG.R.R.SPIKE
 4" DOWN
 11/20/95, MB
 SET P.K./WASHER
 12/15/98, MB
 FD P.K./WASHER
 REF13
 5/1/17, JLL
 SET MAG/WASHER
 11/6/19, JLL



O.D.O.T. DISTRICT 2 SURVEY OFFICE

PERSONNEL _____

REFERENCE NO. 13

SHEET 7 OF 12

NOTES Barnhisel

H.C. Canterbury

R.C. CORNER

DATE 11-20-95

WEATHER Cloudy

TEMP. 39°F

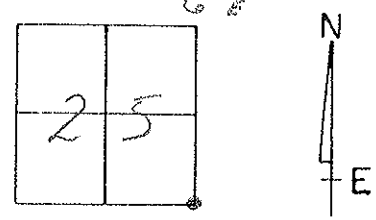
ROUTE U.S. 6

COUNTY Williams

TOWNSHIP Center/Polaski

SECTION 25

T. 6 N. R. 2 E.



TYPE MONUMENT Lg. RR. SPK

ON SURFACE - BELOW 4" BELOW

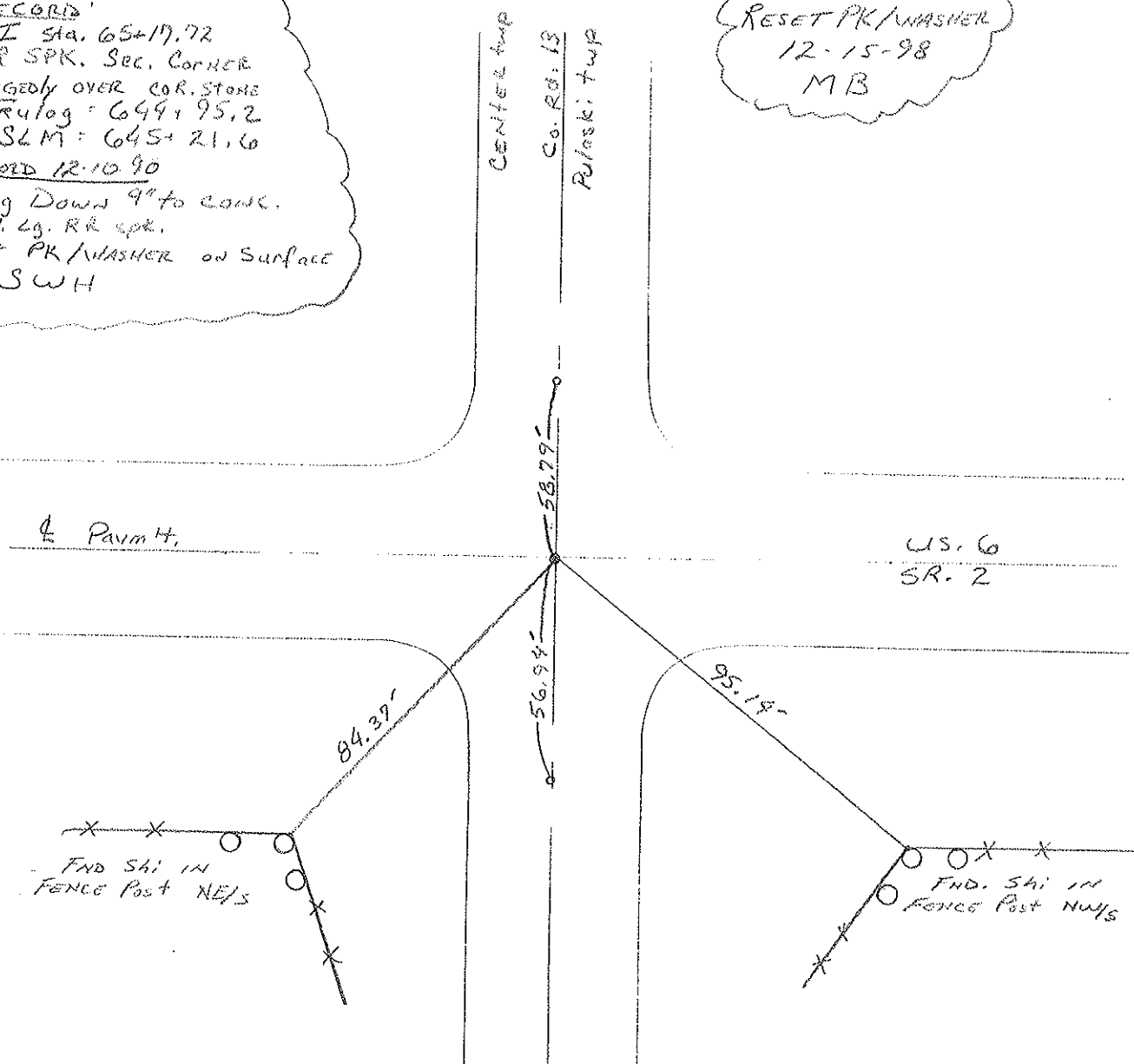
LEFT - 0 PAV'T. - RIGHT 0.5' RT

TO EDGE PAVEMENT ON

S.L.M. 644+22

RECORDS
 PI Sta. 65+17.72
 RR SPK. Sec. CORNER
 ALLEGEDLY OVER COR. STONE
 TruLog: 644+95.2
 SLM: 645+21.6
 RECORD 12-10-90
 Dug Down 9" to CONC.
 Fnd. Lg. RR SPK.
 SET PK/WASHER ON SURFACE
 SWH

RESET PK/WASHER
 12-15-98
 MB



DRAWN BY TIL

O.D.O.T. DISTRICT 2 SURVEY OFFICE

PERSONNEL _____

REFERENCE NO. 13

SHEET _____ OF _____

NOTES HOFFMAN

H.C. BARNHISEL

R.C. LOEHMKE

DATE 10-14-88

WEATHER CLEAR

TEMP. 46°

ROUTE US 6

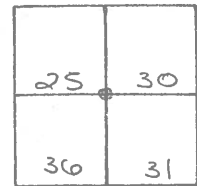
COUNTY WILLIAMS

TOWNSHIP CENTER/PULASKI

SECTION 25

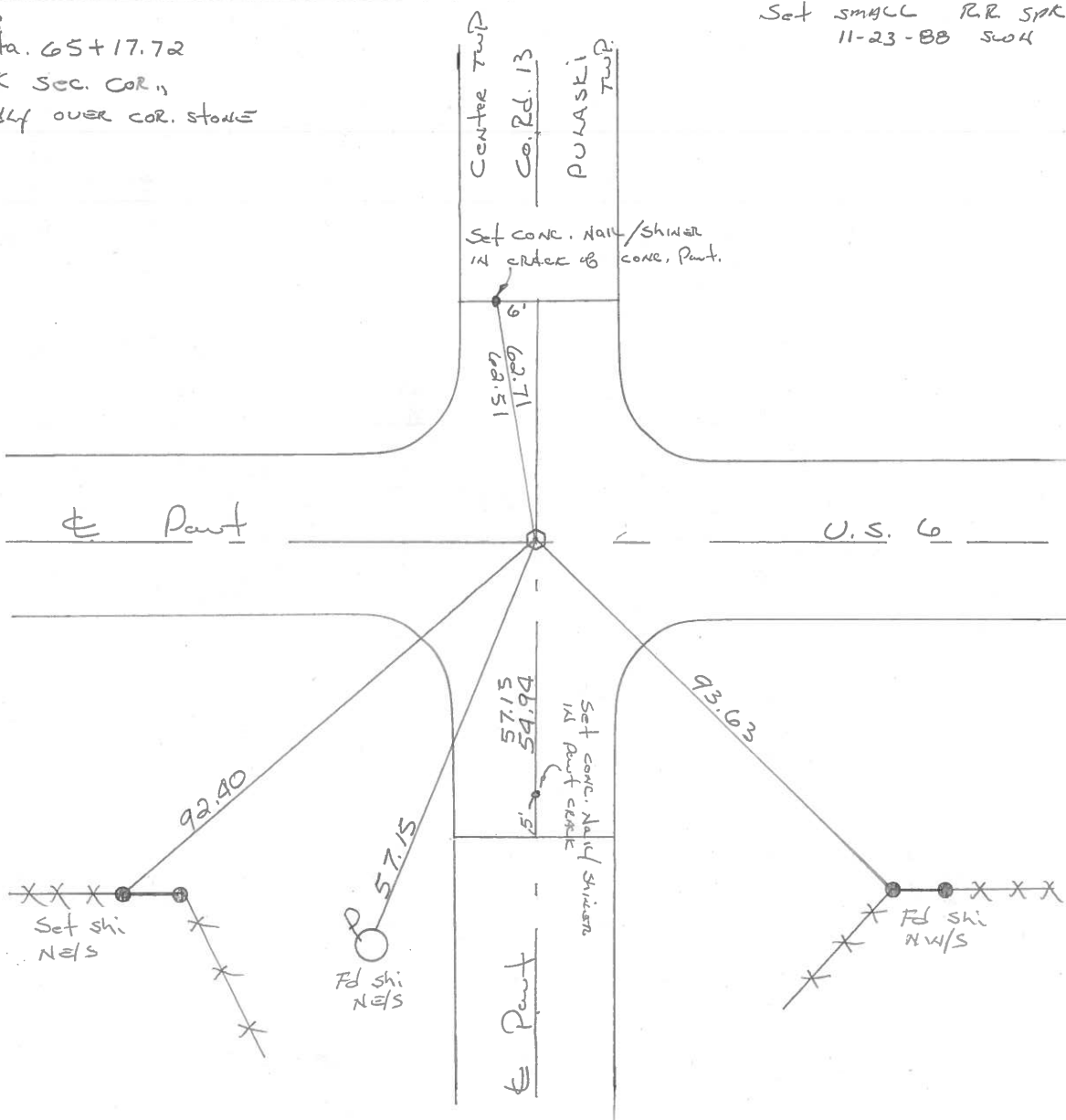
T 6 N 2 E
R 3 E

TYPE MONUMENT SMALL R.R. SPICE
 ON SURFACE - BELOW YES
 LEFT- & PAV'T. - RIGHT YES
 TO EDGE PAVEMENT
 S.L.M. 644+22



RECORD:
 P.I. sta. 65+17.72
 R.R. SPK SEC. COR.,
 ALLEGEDLY OVER COR. STONE

Set small R.R. SPK
 11-23-88 SWH



PERSONNEL TITLE PERSONNEL TITLE

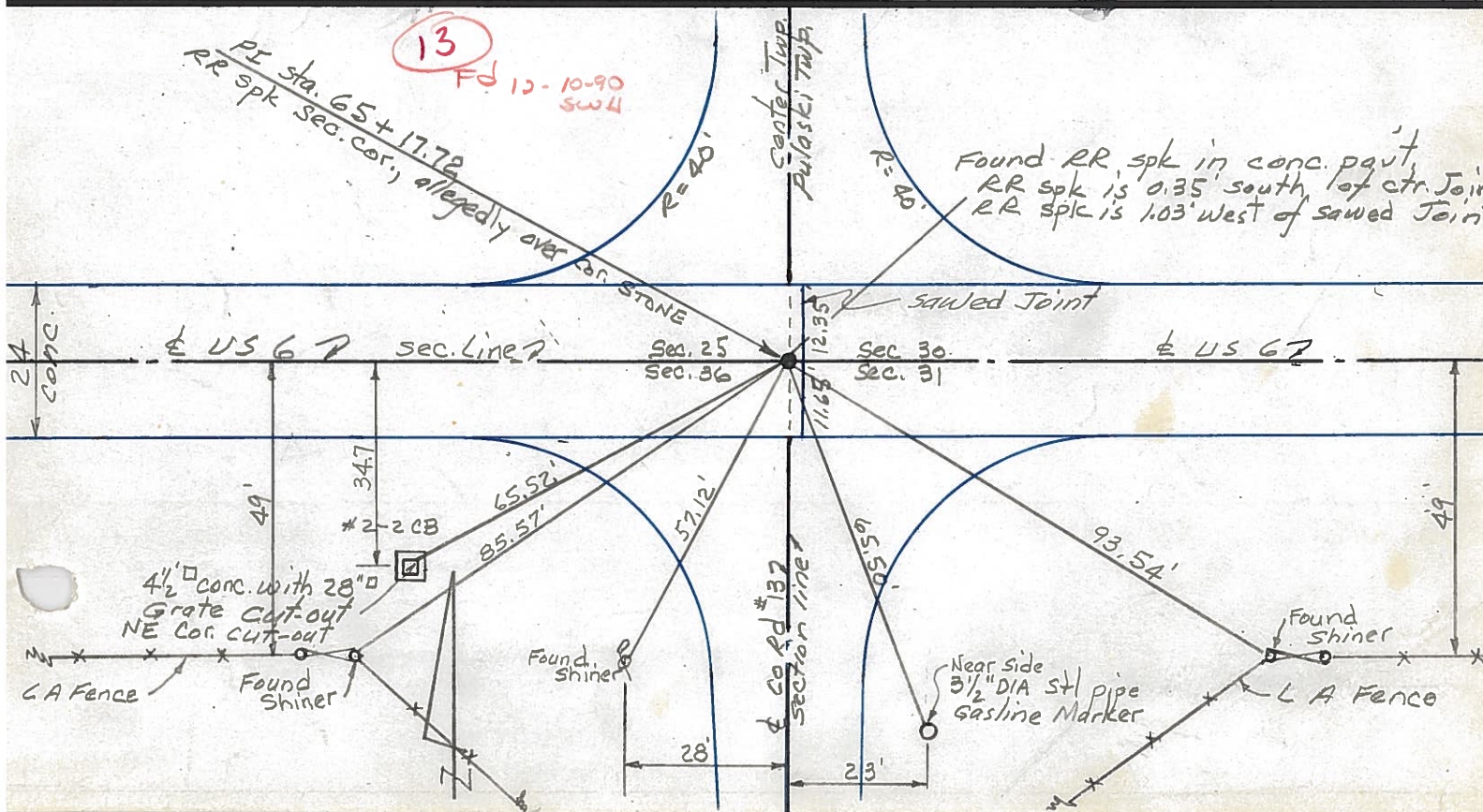
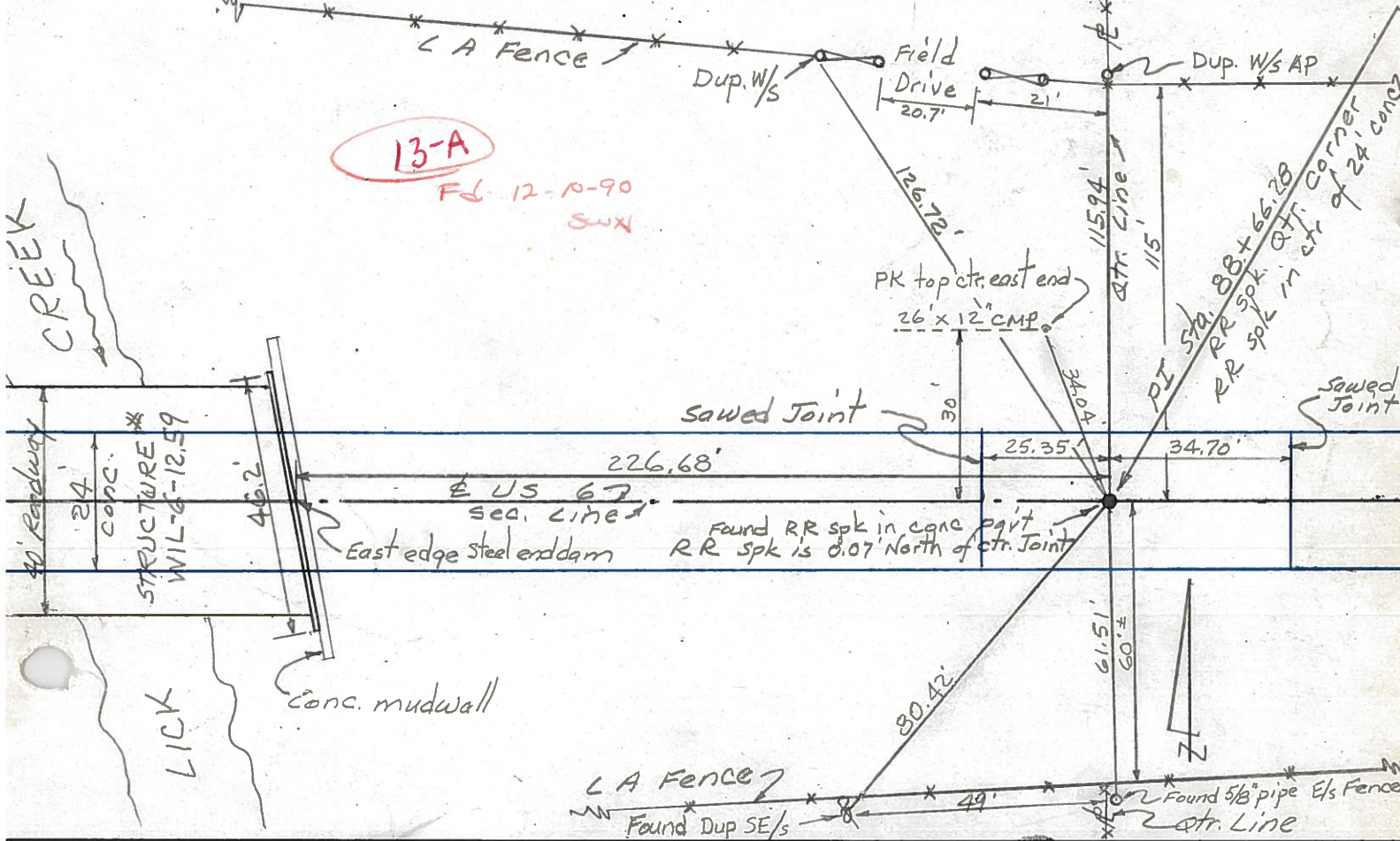
Red Beach
W. Knape

COUNTY Williams DATE Dec. 1975

S. R. US 6 WEATHER

SEC. Pulaski Twp. TEMP

DESCRIPTION CONTROL POINTS JOB NO.



PERSONNEL TITLE PERSONNEL TITLE

Hoover _____ Mohler _____
Ruffer _____
Delventhal _____
Young _____

COUNTY Wms. DATE 12-7-60

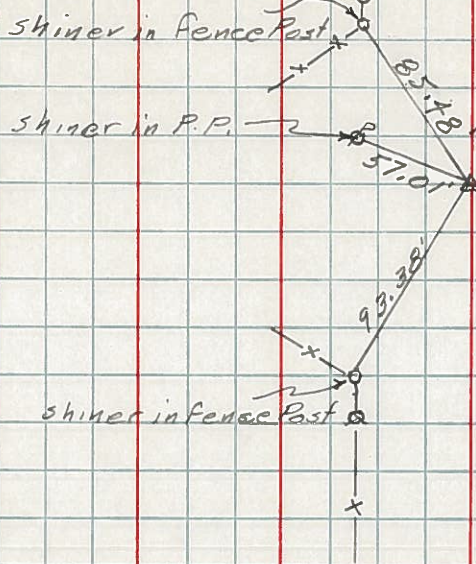
S. R. 6 WEATHER Partly Cloudy

SEC. _____ TEMP. 28

DESCRIPTION LEFT CENTER LINE RIGHT JOB NO.

107.

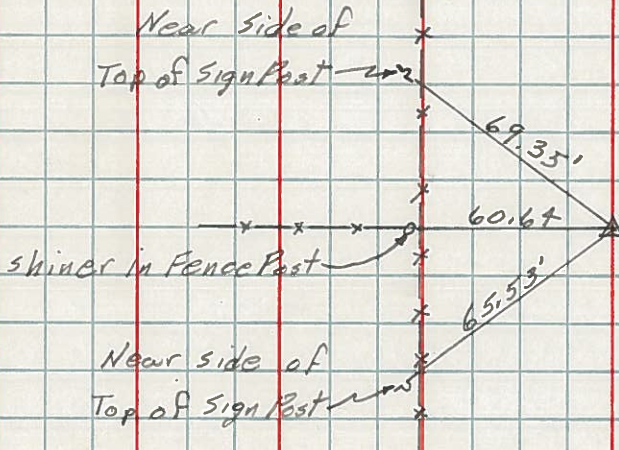
(13)



Found R.R. spike
Int. Co. Rd. 13

108.

(13-A)

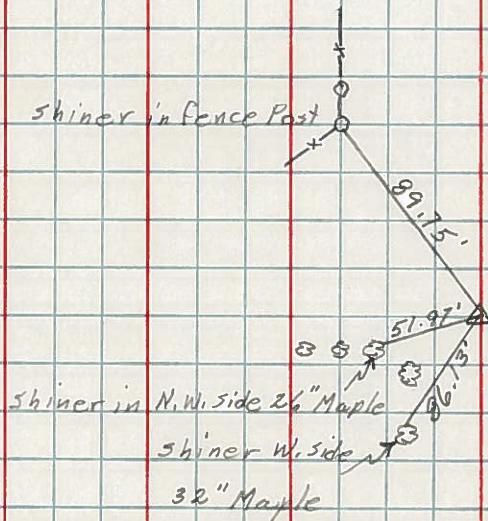


Sta. 88+66.28
Found R.R. Spk.

All measurements are direct

109.

(14)

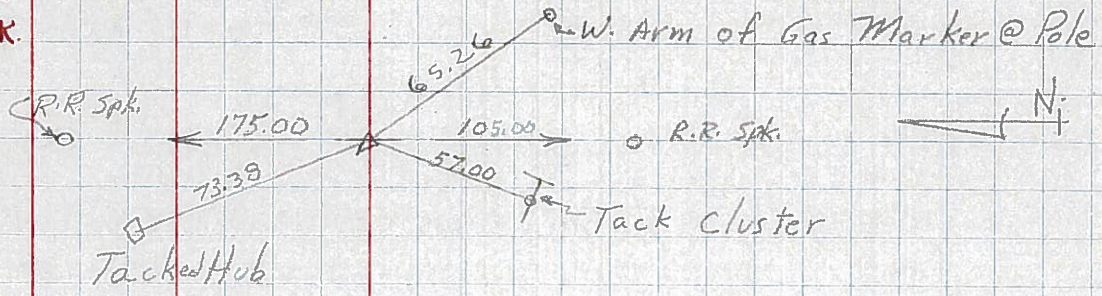


Found R.R. Spike
Int. Co. Rd. 14

PERSONNEL	TITLE	PERSONNEL	TITLE	COUNTY	DATE	WEATHER
Louys				Wii	9-9-57	
				S. R. 6		
				SEC. Relocation over Rt. 384		60°
DESCRIPTION	Witnesses to control points.			JOB NO.		

107 SAME AS No 62
IN Field Book.
P.I. - sta. 65+17.72
 $\Delta = 0^\circ - 35' \text{ LT.}$

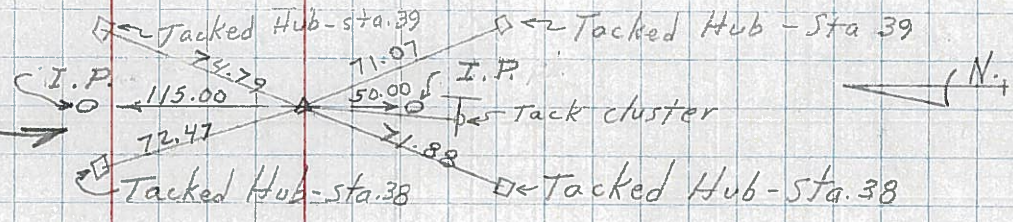
(13)



106
P.I. - Sta. 38+49.50
 $\Delta = 0^\circ - 12' \text{ LT.}$

IRON PIN.

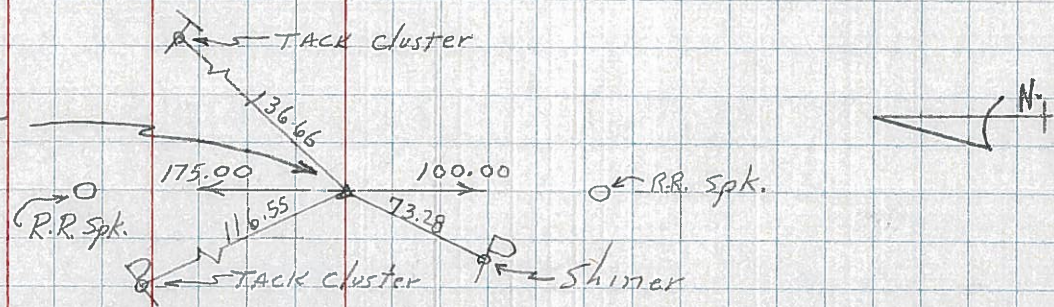
(12-A)



105 SAME AS No. 61
IN Field Book.
P.I. - sta. 11+84.65
 $\Delta = 0^\circ - 01' \text{ RT.}$

IRON ROD OVER STONE

(12)



104
P.I. - sta 0+00
Iron Pin
(E. INT' x' n. Rt. #6
& Rt. #2)

(11-B)

