

O.D.O.T. DISTRICT 2 SURVEY OFFICE (USE ONLY)

PERSONNEL _____ REFERENCE NO. 13 A SHEET 37 OF 41
 NOTES HAGEMeyer DATE 7/17/18 ROUTE US 6
 H.C. LEU WEATHER PTLY CLOUDY COUNTY WILLIAMS
 R.C. HAGEMeyer TEMP. 81° TOWNSHIP PULASKI
 DWG BY NIESE PID 102827 SECTION 30
 T 6 N R 3 E

TYPE MONUMENT D.N.F. P.K./WASHER

ON SURFACE - ~~BELOW~~ ON

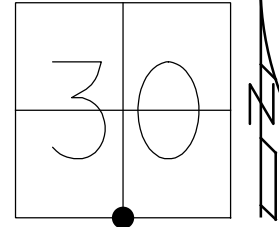
OFFSET 0.8' RT : RT

12.0' TO RT EDGE PAVEMENT

STATION: 668+28.94

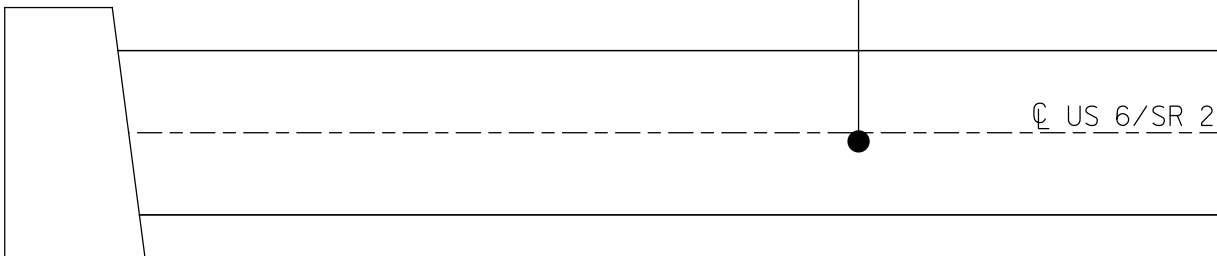
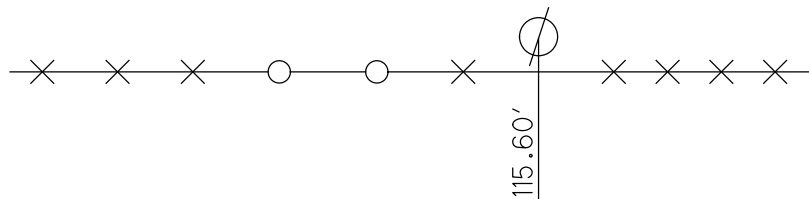
HORZ.DATUM: NAD83 2011 GEOID: NAVD88 2012A

GRID: NORTHING: 653391.542 EASTING: 1402448.817



RECORD: P.I.
 STA 88+66.28
 FD LG.R.R.SPIKE
 4 1/2" DOWN
 SET P.K./WASHER
 12/10/98, SWH
 D.N.F.
 7/17/18, JLL
 CALC.POINT
 STA.668+28.94
 N : 653391.542
 E : 1402448.817

FD SHI
 STUB POLE



BRIDGE
 WIL.
 6-12.59

O.D.O.T. DISTRICT 2 SURVEY OFFICE

PERSONNEL _____

REFERENCE NO. 13-A

SHEET 8 OF 12

NOTES: Barnhisel

H.C. CANTERBURY

R.C. CORDES

DATE 11-20-95

WEATHER Cloudy

TEMP. +39°F

ROUTE US. 6

COUNTY Williams

TOWNSHIP Palaski

SECTION 30

T6 N R 3 E

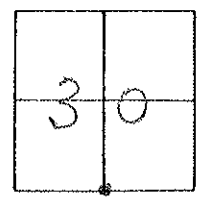
TYPE MONUMENT PK & WASHER

ON SURFACE - BELOW YES

LEFT - CL PAV'T. - RIGHT O. R. RT

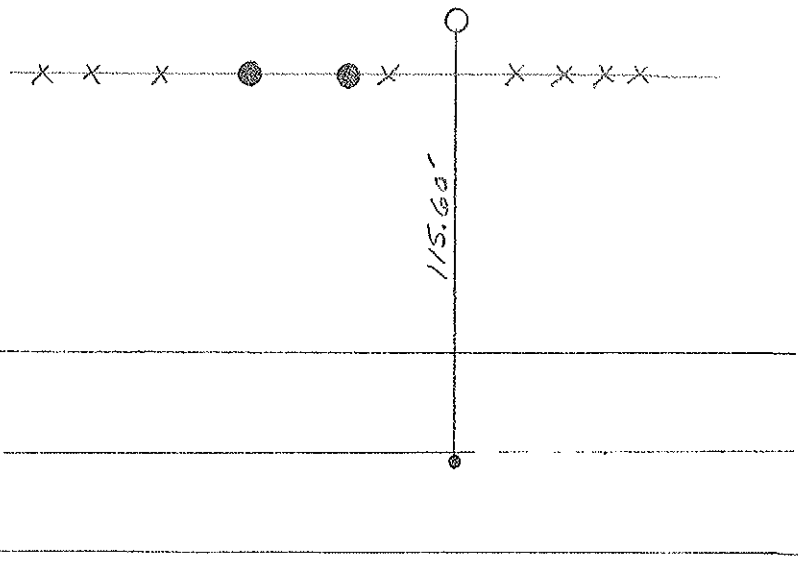
12.0 TO RT EDGE PAVEMENT

S.L.M. 667+66



RECORDS:
 PI. Sta 88+66.28
 RR SPK QTR CORNER
 Tru log SLM = 669+75.2
 Record 12-10-98!
 Dug Down 4 1/2" to CONC
 Find. Lg. RR spk.
 SET PK/WASHER @ SURFACE

NOTE: DID NOT RE-SET POINT
 ALL TIES DESTROYED
 12-15-99
 MB



Bridge
 W. 11.6-12.59

O.D.O.T. DISTRICT 2 SURVEY OFFICE

PERSONNEL

REFERENCE NO. 13-A

SHEET 8 OF 11

NOTES BARNHISEL

H.C. CANTERBURY

DATE 11-20-95

ROUTE U.S. 6

R.C. GORDON

WEATHER Cloudy

COUNTY WILLIAMS

TEMP. +4° C

TOWNSHIP PULASKI

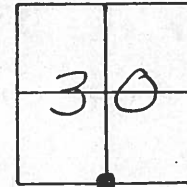
SECTION 30

T 6 N R 3 E

TYPE MONUMENT P.K. & WASHER

ON SURFACE - ~~BELOW~~ yes

~~SET~~ - & PAV'T. - RIGHT 25.40 cm

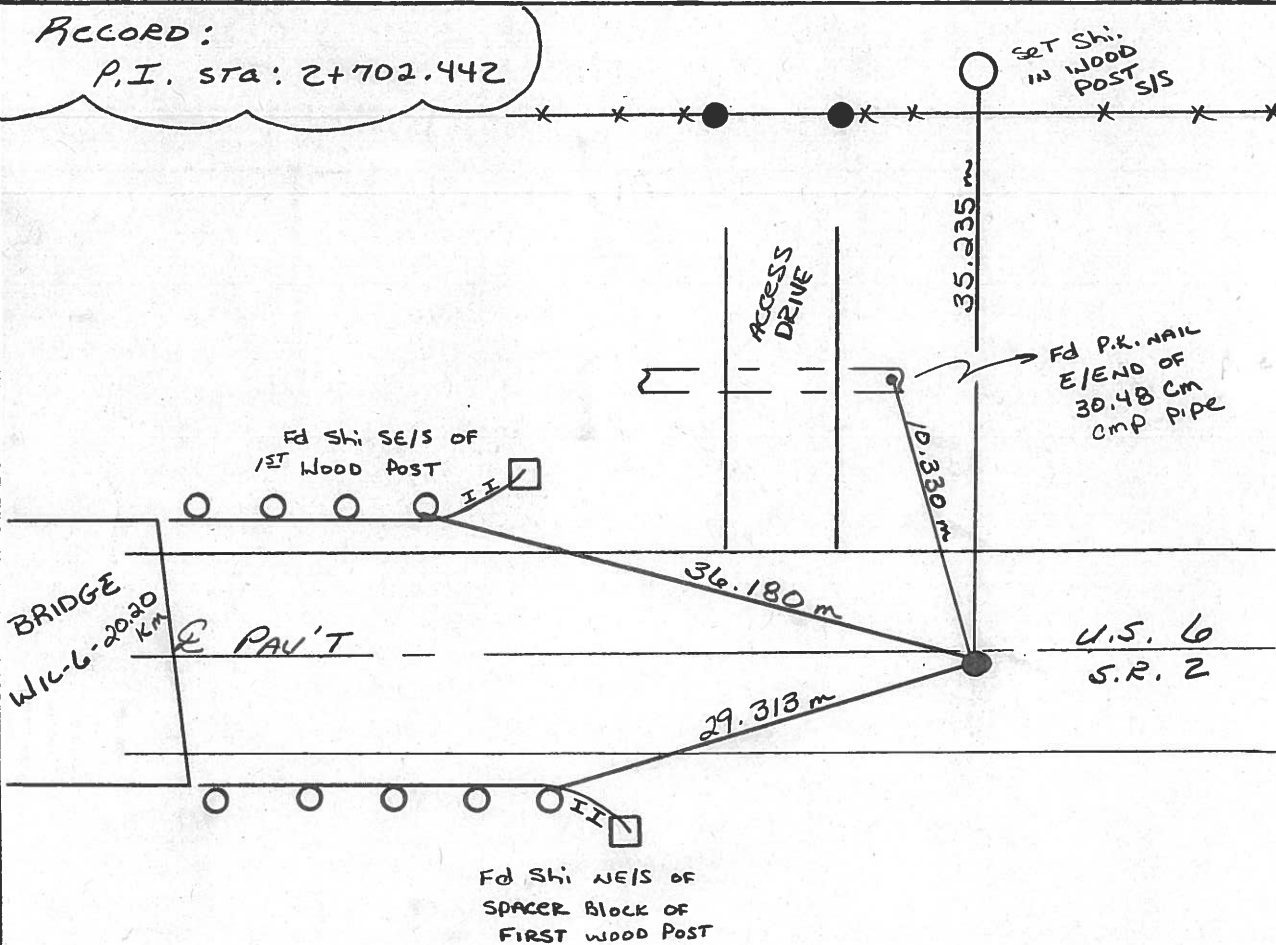


3.65 m TO RT EDGE PAVEMENT

S.L.M. 20+348.519

RECORD:

P.I. STA: 2+702.442



O.D.O.T. DISTRICT 2 SURVEY OFFICE

PERSONNEL _____

REFERENCE NO. 13-A

SHEET _____ OF _____

NOTES HOFFMAN

H.C. BARNHISEL

R.C. LOEHRKE

DATE 10-14-88

WEATHER CLEAR

TEMP. 46°

ROUTE U.S. 6

COUNTY Williams

TOWNSHIP PULASKI

SECTION 30

T. 6 N. R. 3 E

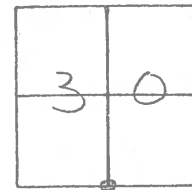
TYPE MONUMENT SMALL R.R. SPIKE

ON SURFACE - BELOW YES

LEFT- & PAW'T. - RIGHT YES

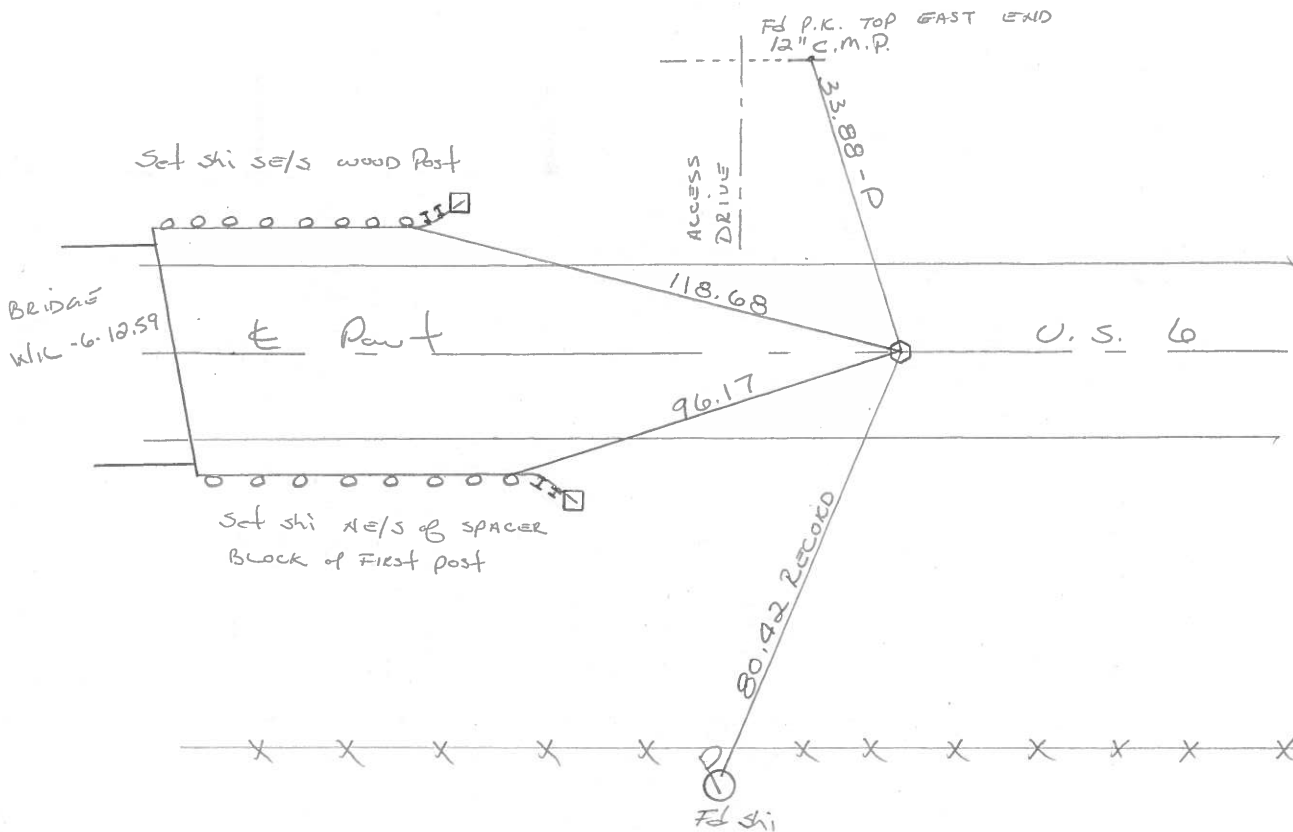
R.O. TO 2+ EDGE PAVEMENT

S.L.M. 667+66



RECORD: P.I. Sta. 88+66.28
R.R. SPK. QTR. CORNER

Set Small R.R. SPK
11-23-88 SWH

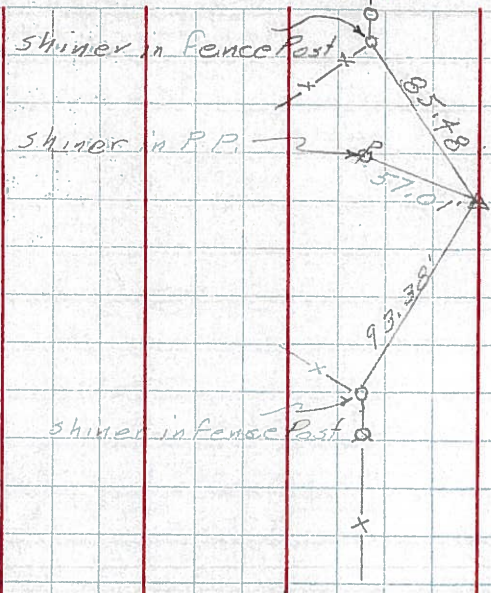


PERSONNEL	TITLE	PERSONNEL	TITLE
Hoover		Mohler	
Ruffer			
Delventhal			
Young			

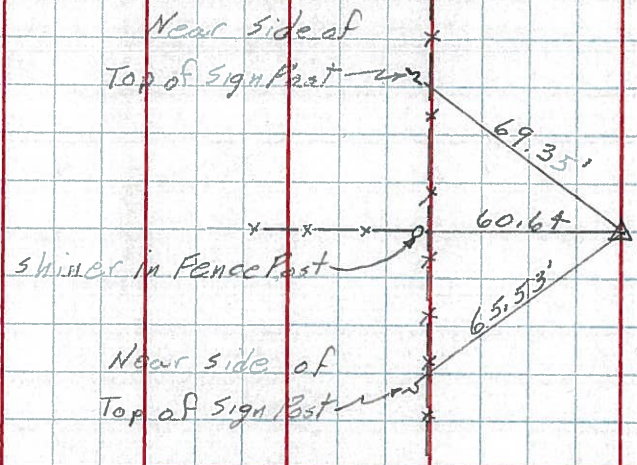
COUNTY Wms. DATE 12-7-60
 S. R. 6 WEATHER Partly Cloudy
 SEC. _____ TEMP. 28

DESCRIPTION _____ LEFT _____ CENTER LINE _____ RIGHT _____ JOB NO. _____

107
(13)

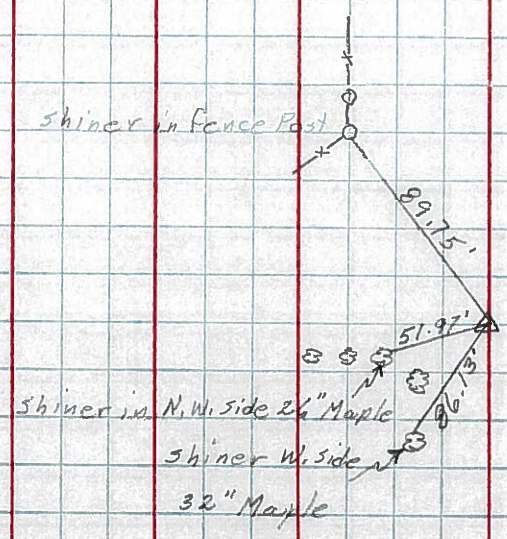


108
(13.4)



All measurements are direct

109
(14)



FILE NO. _____

PERSONNEL TITLE PERSONNEL TITLE

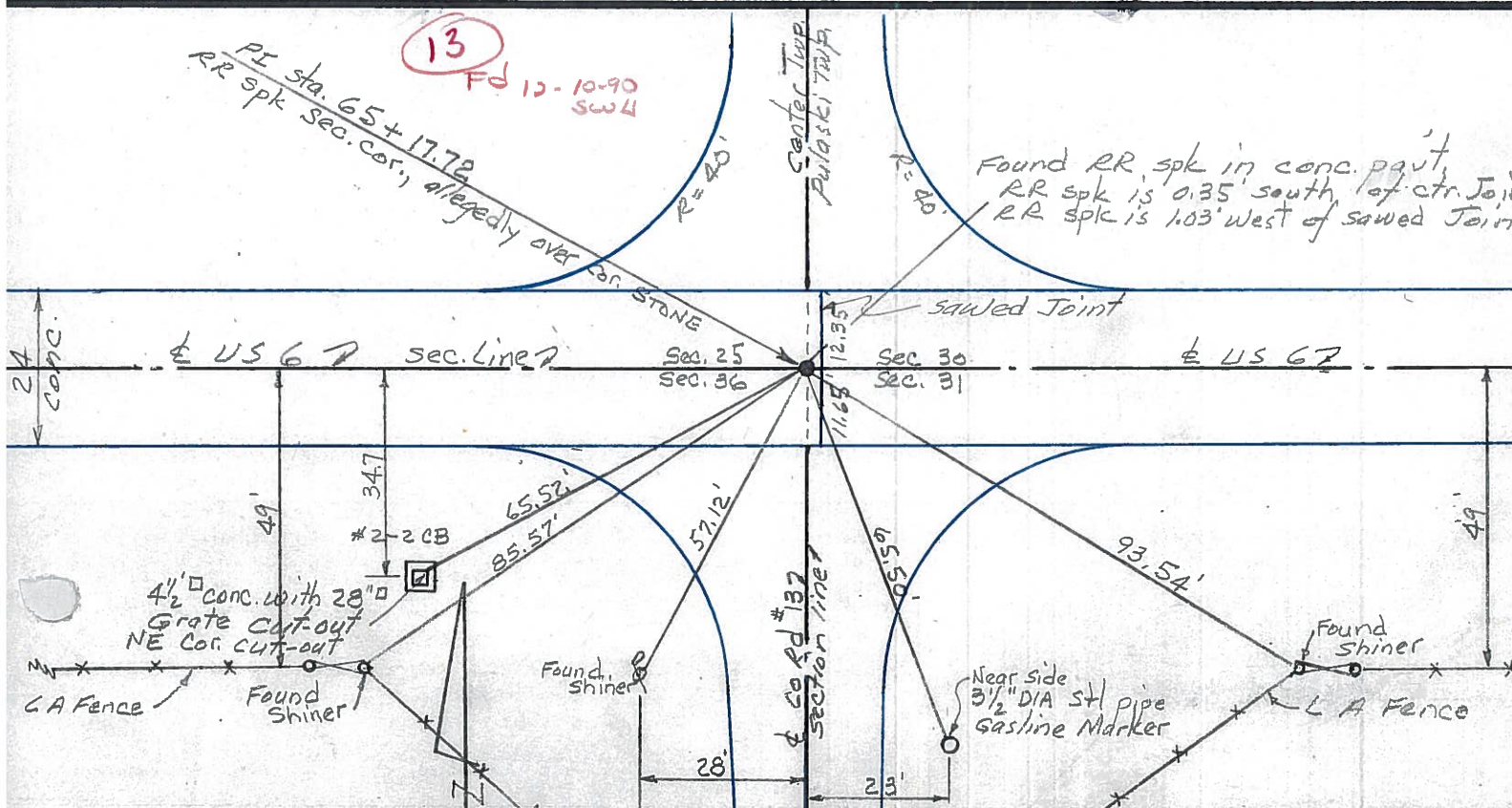
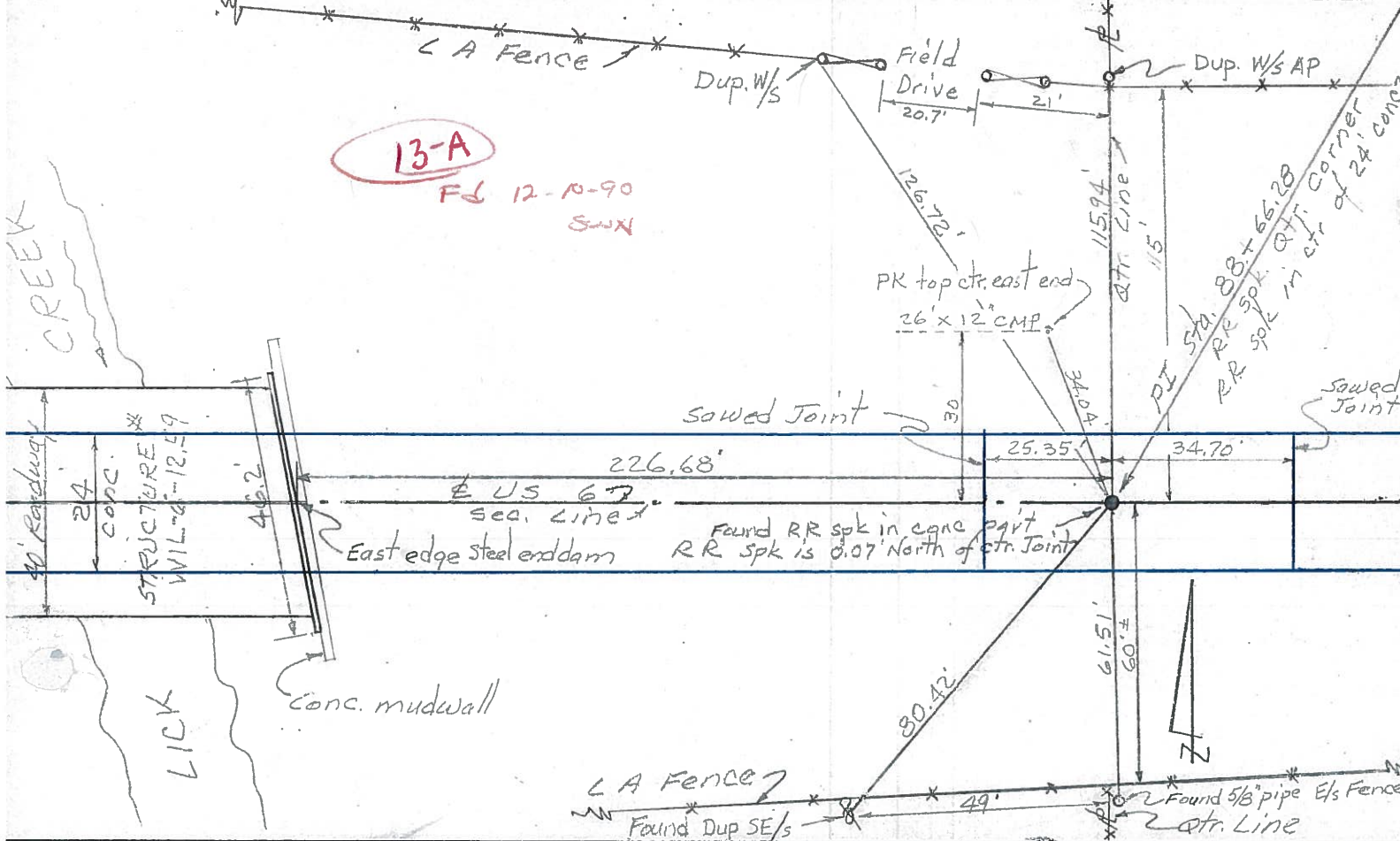
Red Beach
W. Knappe

COUNTY Williams DATE Dec. 1975

S. R. US 6 WEATHER _____

SEC. Pulaski Twp. TEMP _____

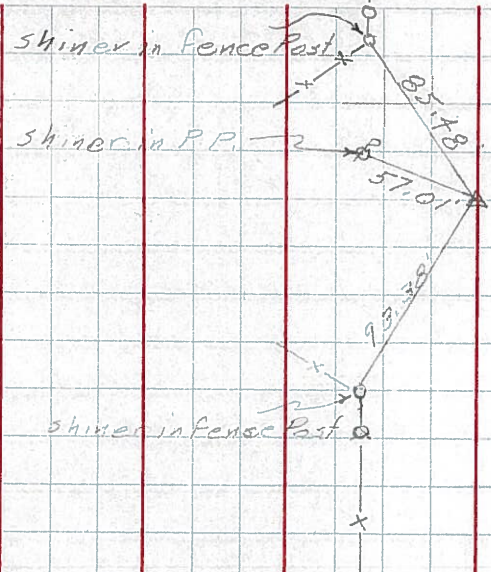
DESCRIPTION CONTROL POINTS JOB NO. _____



PERSONNEL	TITLE	PERSONNEL	TITLE	COUNTY	DATE	WEATHER	TEMP.
<u>Hoover</u>		<u>Mahler</u>		<u>Wms.</u>	<u>12-7-60</u>	<u>Partly Cloudy</u>	<u>28</u>
<u>Ruffer</u>				<u>S. R. 6</u>			
<u>Delventhal</u>							
<u>Young</u>				<u>SEC.</u>			

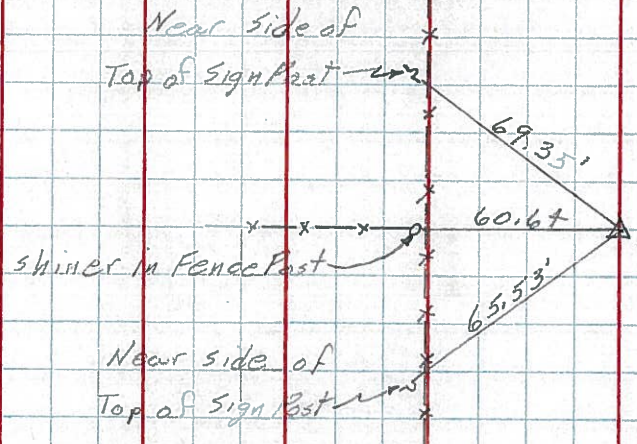
DESCRIPTION _____ LEFT _____ CENTER LINE _____ RIGHT _____ JOB NO. _____

107
(13)



Found R.R. Spike
Int. Co. Rd. 13

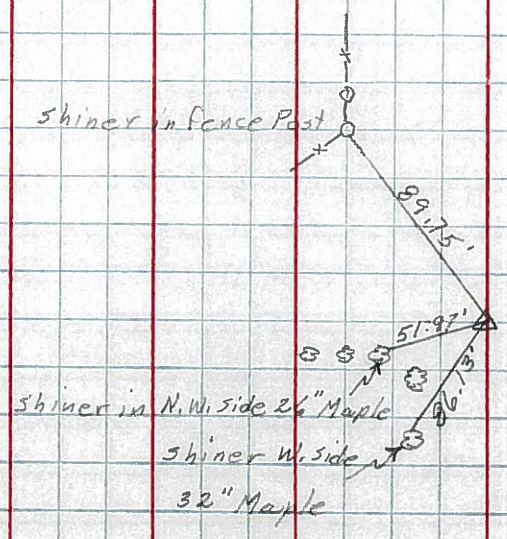
108
(13-A)



Sta. 88+66.28
Found R.R. Spk.

All measurements are direct

109
(14)



Found R.R. Spike
Int. Co. Rd. 14

PERSONNEL TITLE PERSONNEL TITLE
Louys

COUNTY Wi. DATE 2-7-58

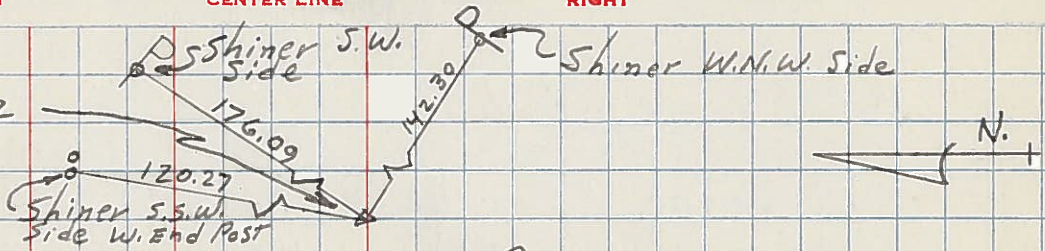
S. R. 6 WEATHER

SEC Relocation over Rt. #384 TEMP. 20°

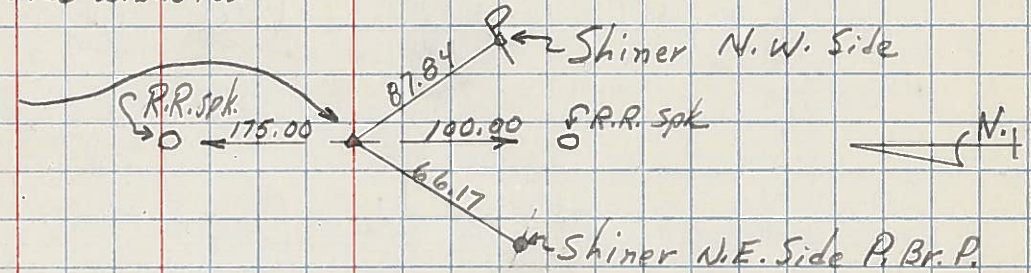
DESCRIPTION Witnesses to Control Points

LEFT CENTER LINE RIGHT

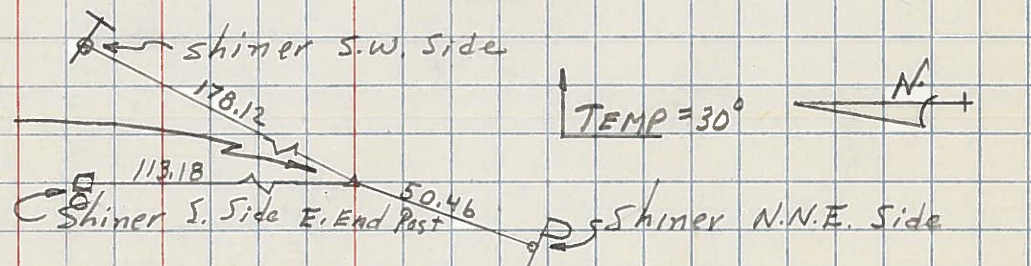
114
16-A R/W only
P.I. - sta. 181 + 58.02
(Point is 0.10 LT. of Str. Line Between 1/2 Mi. Points)
 $\Delta = 0^\circ - 01' RT.$
(Shi. OVER STONE)



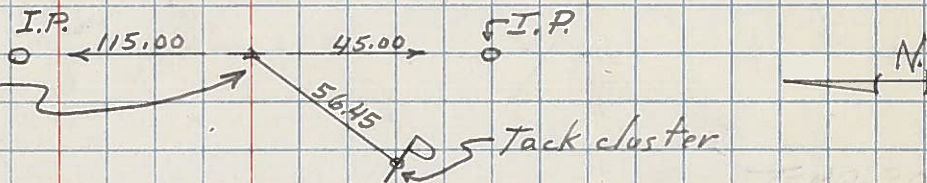
113
16 P.I. - sta. 168 + 35.75
 $\Delta = 0^\circ - 01' RT.$
(TACKED HUB OVER STONE)



112
15-A R/W only
P.I. - sta. 155 + 04.44
 $\Delta = 0^\circ - 00' - 30'' LT.$
(Point is 0.25' RT. of Constr. on a Str. Line)
(TACKED HUB OVER STONE)

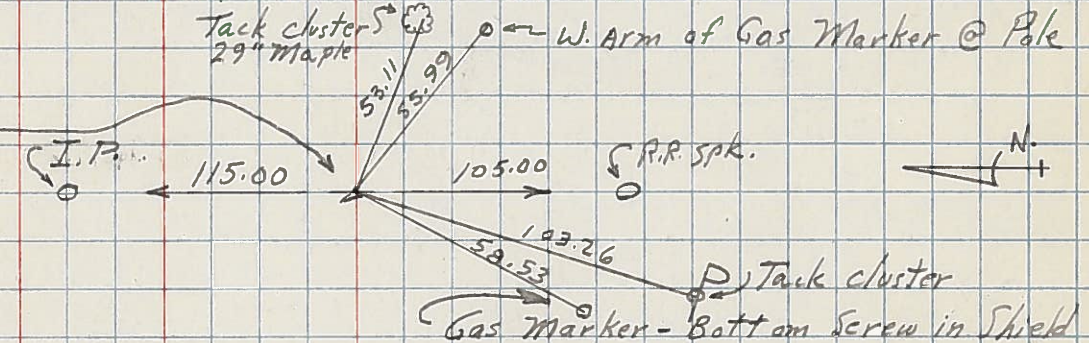


111
15 P.I. - sta. 141 + 72.52
 $\Delta = 0^\circ - 02' LT.$
R.R. SPK. EST.

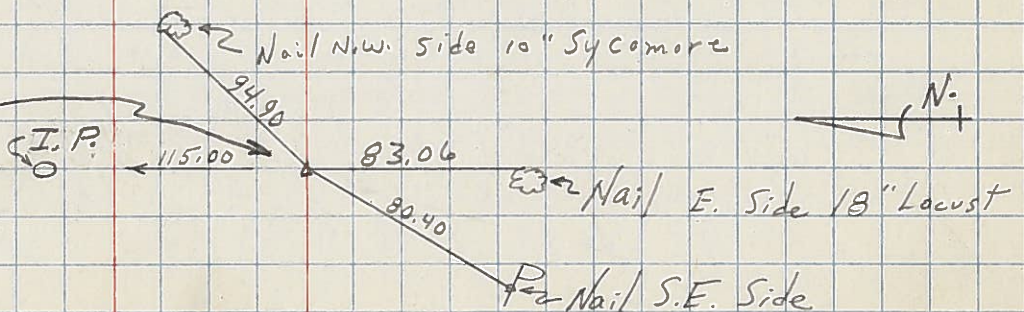


110 - Sta. 128 + 52.28 INT. US 6 & US 127 (R.R. SPK. EST.) REFER - NQ110A SHEET OPPOS. NOT HERE BUT IN FIELD BOOK

109 - IN FIELD BOOK
P.I. - sta. 115 + 11.57
 $\Delta = 0^\circ - 52.5' RT.$
Shi. OVER STONE.



108
P.I. - sta. 88 + 66.28
 $\Delta = 0^\circ - 10' LT.$
SHINER IN PAVT.



13-A