

O.D.O.T. DISTRICT 2 SURVEY OFFICE (USE ONLY)

PERSONNEL

REFERENCE NO. 14

SHEET 38 OF 41

NOTES HAGEMEYER

DATE 7/17/18

ROUTE US 6

H.C. LEU

WEATHER PTLY CLOUDY

COUNTY WILLIAMS

R.C. HAGEMEYER

TEMP. 81°

TOWNSHIP PULASKI

DWG BY NIESE PID 102827

SECTION 30

T 6 N R 3 E

TYPE MONUMENT LG.R.R.SPIKE

~~ON SURFACE~~ - BELOW 6 1/2"

OFFSET 0.5' LT : ~~RT~~

12.9' TO LT EDGE PAVEMENT

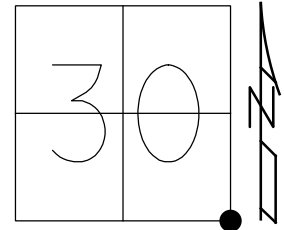
STATION: 694+74.85

HORZ.DATUM: NAD83 2011

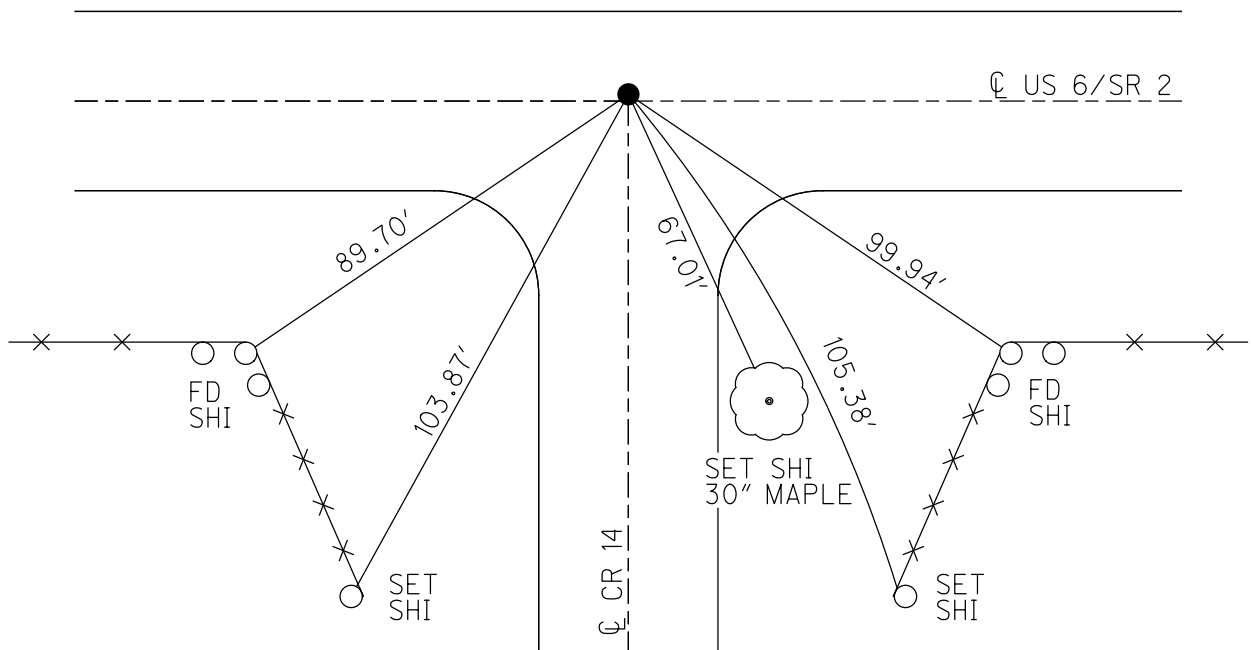
GEOID: NAVD88 2012A

GRID: NORTHING: 653328.532

EASTING: 1404990.286



RECORD: P.I.
 STA.694+84.80
 FD LG.R.R.SPIKE
 6 1/2" DOWN
 SET P.K./WASHER
 12/10/90, SWH
 FD P.K./WASHER
 11/20/95, MB
 SET P.K./WASHER
 12/15/98, MB
 FD P.K.SHANK
 FD LG.R.R.SPIKE
 6 1/2" DOWN
 7/17/18, JLL
 SET MAG/WASHER
 11/6/19, JLL



O.D.O.T. DISTRICT 2 SURVEY OFFICE

PERSONNEL _____

REFERENCE NO. 14

SHEET 9 OF 12

NOTES Barnhisel

H.C. Carterbury

R.C. Cordes

DATE 11-20-95

WEATHER Cloudy

TEMP. +39°F

ROUTE U.S. 6

COUNTY Williams

TOWNSHIP Pulaski

SECTION 30

T 6 N R 3 E

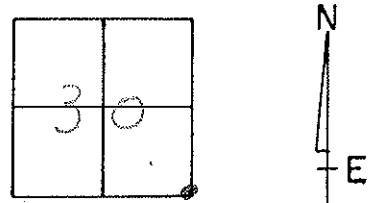
TYPE MONUMENT PK/WASHER

ON SURFACE - ~~BELOW~~ YES

LEFT - ~~C~~ PAV'T. - RIGHT 0.5' RT

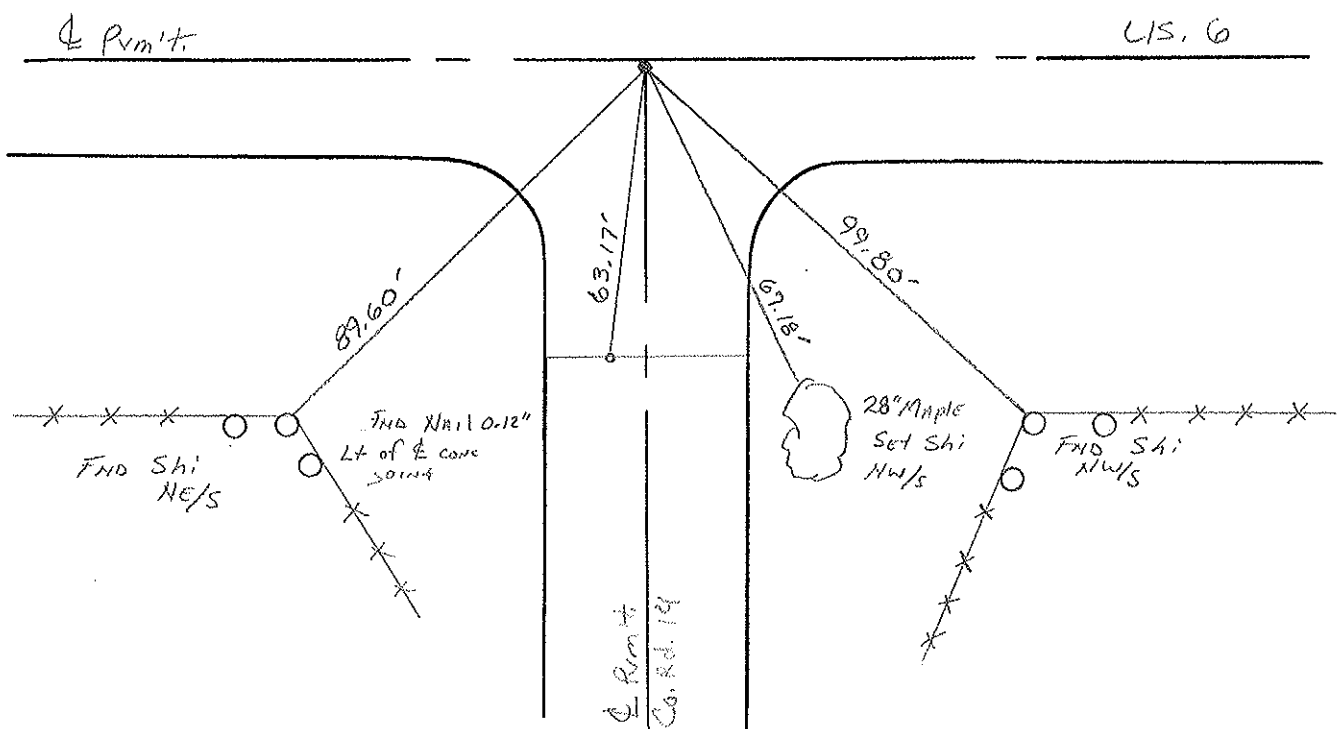
12.9' TO LT EDGE PAVEMENT

S.L.M. 694+08



RECORD:
 PI, Sta 115+11.57
 TAUlog = 695+00.64
 SLM = 694+84.8
RECORD 12-10-90
 Dug Down 6 1/2" TO CONC.
 FND Lg RR spike
 Set PK/WASHER ON SURFACE SWH

(Reset PK/WASHER)
 12-15-98
 MB



Drawn BY TL

O.D.O.T. DISTRICT 2 SURVEY OFFICE

PERSONNEL _____

REFERENCE NO. 14

SHEET 9 OF 11

NOTES BARNHISEL

H.C. CANTERBURY

DATE 11-20-95

ROUTE U.S. 6

R.C. CORDES

WEATHER Cloudy

COUNTY WILLIAMS

TEMP. +4° C

TOWNSHIP PULASKI

SECTION 30

T. 6 N R. 3 E

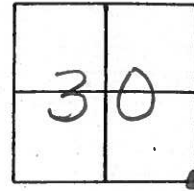
TYPE MONUMENT P.K. & WASHER

ON SURFACE - ~~BELOW~~ YES

~~SET~~ - E PAV'T. - RIGHT 15.24 cm

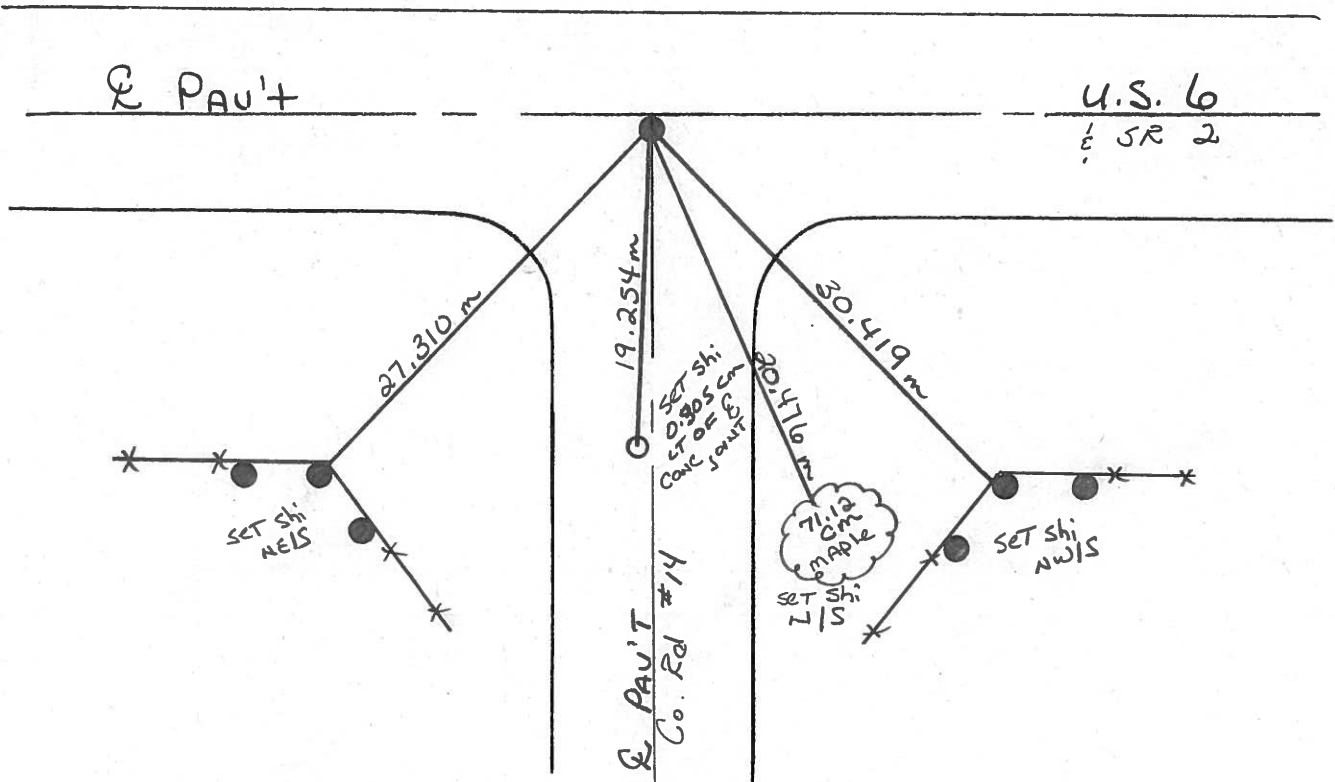
3.96 m TO RT EDGE PAVEMENT

S.L.M. 21+154.942



RECORD:

P.I. sta, 18+525.569



O.D.O.T. DISTRICT 2 SURVEY OFFICE

PERSONNEL

REFERENCE NO. 14

SHEET OF

NOTES HOFFMAN

H.C. BARNHISEL

DATE 10-14-88

ROUTE US 6

R.C. LOHRKE

WEATHER CLEAR

COUNTY Williams

TEMP. 46°

TOWNSHIP PULASKI

SECTION 32

T. 4 N R. 3 E

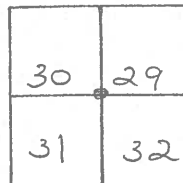
TYPE MONUMENT SMALL R.R. SPICE

ON SURFACE - BELOW YES

LEFT-~~C~~ PAV'T. - RIGHT 0.9

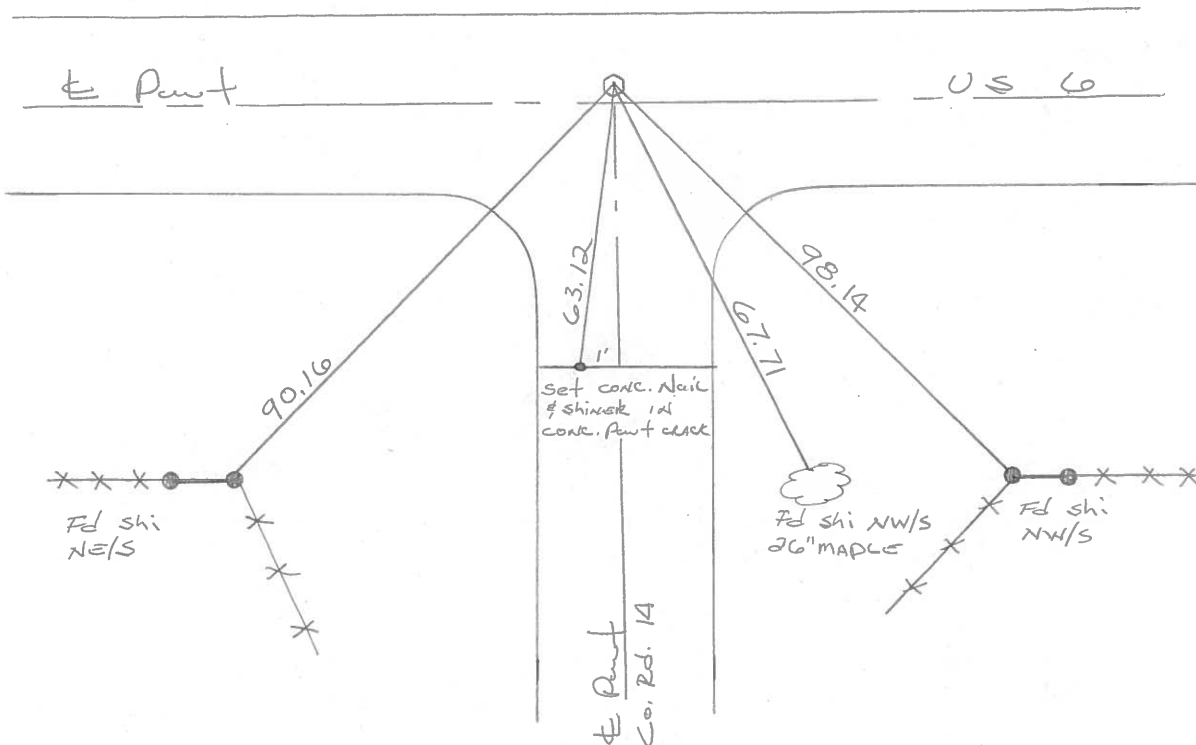
R.O. TO LT EDGE PAVEMENT

S.L.M. 694+08



RECORD: P.I. sta 115+11.57

Set SMALL RR SPICE
11-23-88 SWH



O.D.O.T. DISTRICT 2 SURVEY OFFICE

PERSONNEL _____

REFERENCE NO. 14

SHEET _____ OF _____

NOTES Hoffman

H.C. BARWISSEL

R.C. LOENRKE

DATE 7-24-86

WEATHER CLEAR

TEMP. 85°

ROUTE US 6

COUNTY Williams

TOWNSHIP Pulaski

SECTION 32

T6 NR 3 E

TYPE MONUMENT SMALL R.R. SPK

ON SURFACE - ~~BELOW~~ yes

LEFT - ~~C~~ PAV'T. - RIGHT 0.9'

12' TO L EDGE PAVEMENT

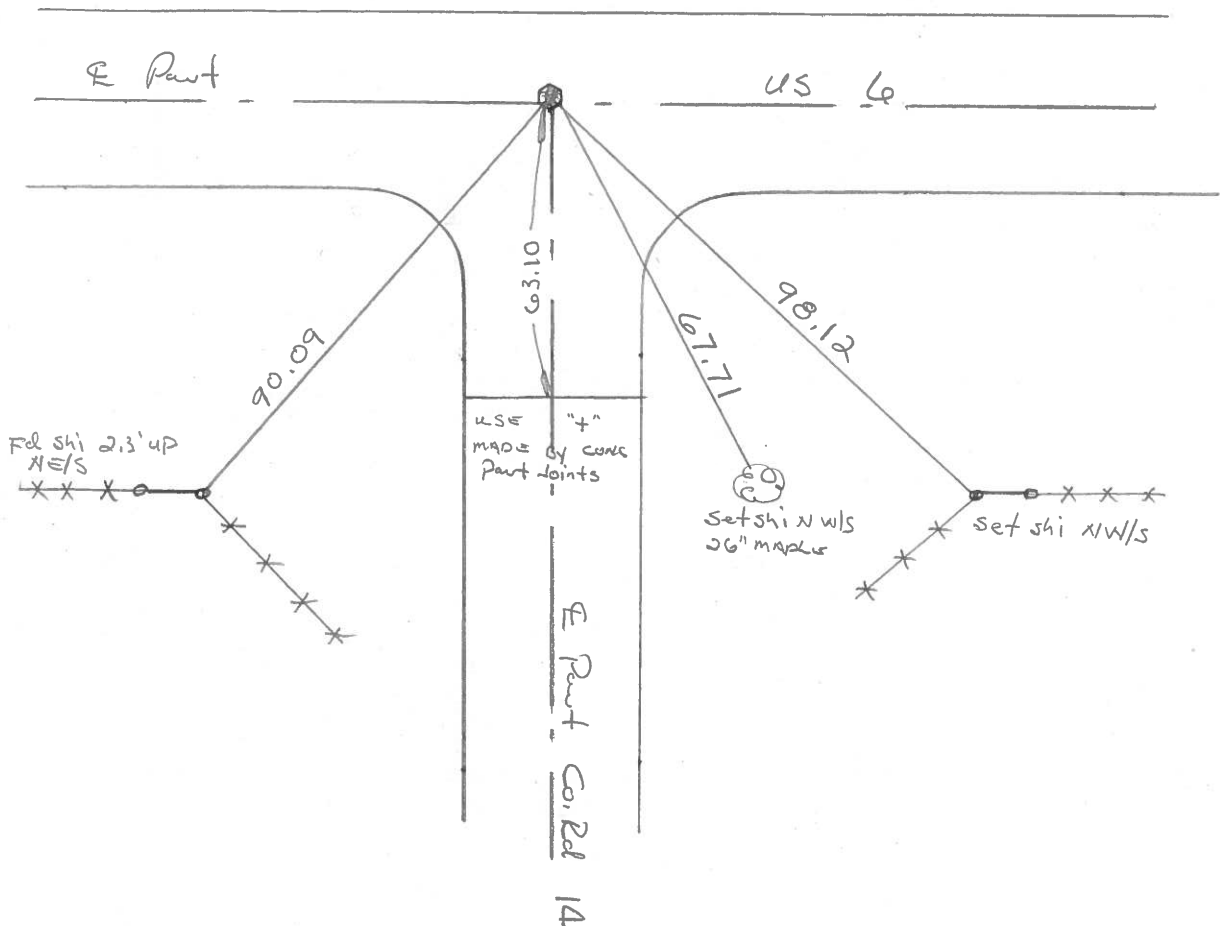
S.L.M. 694 + 64.5

30	29
31	32



RECORD:

P.I. sta 115 + 11.57



PERSONNEL TITLE PERSONNEL TITLE

Red Beach
W. Knappe

COUNTY Williams DATE Dec. 1975

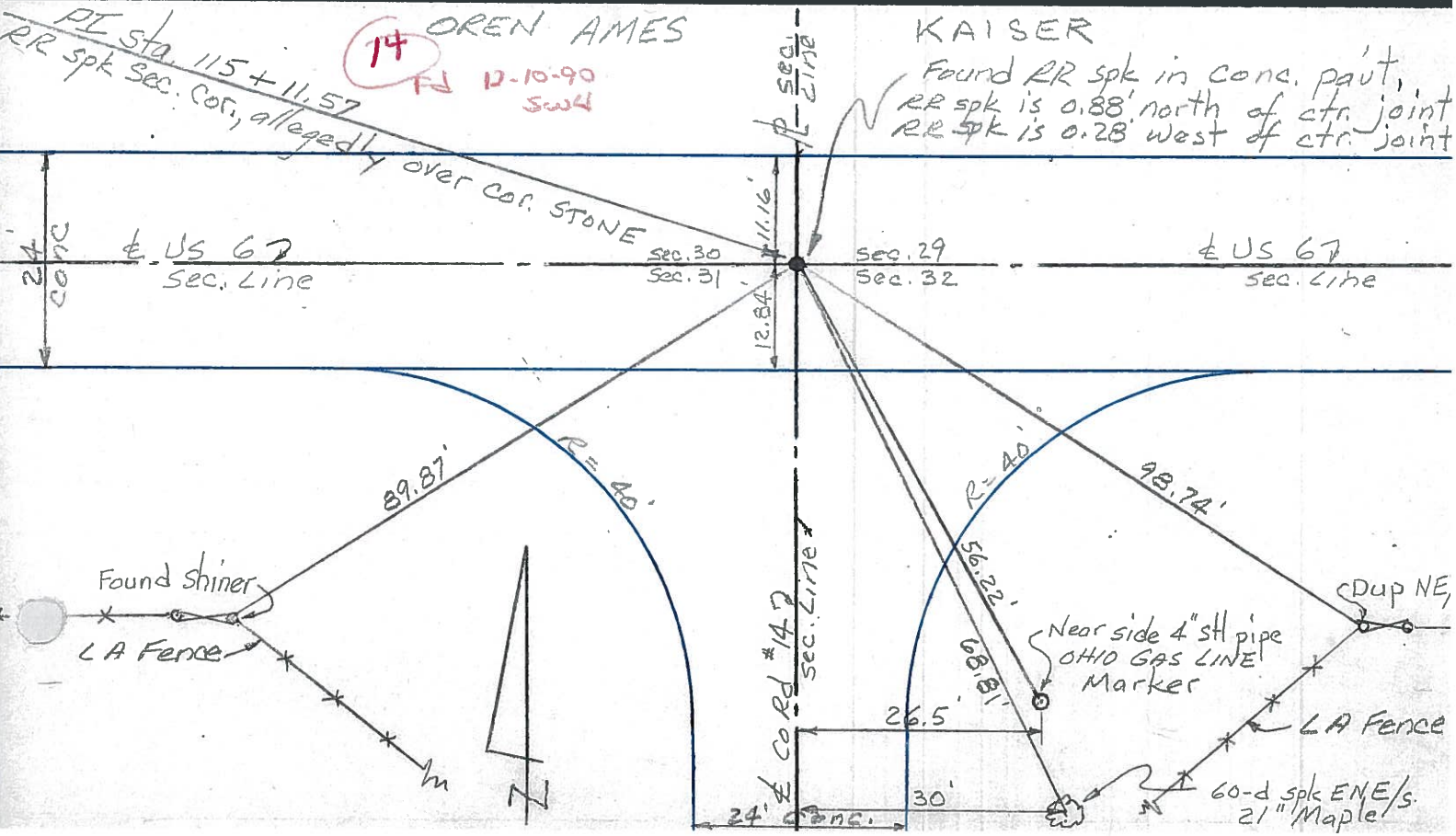
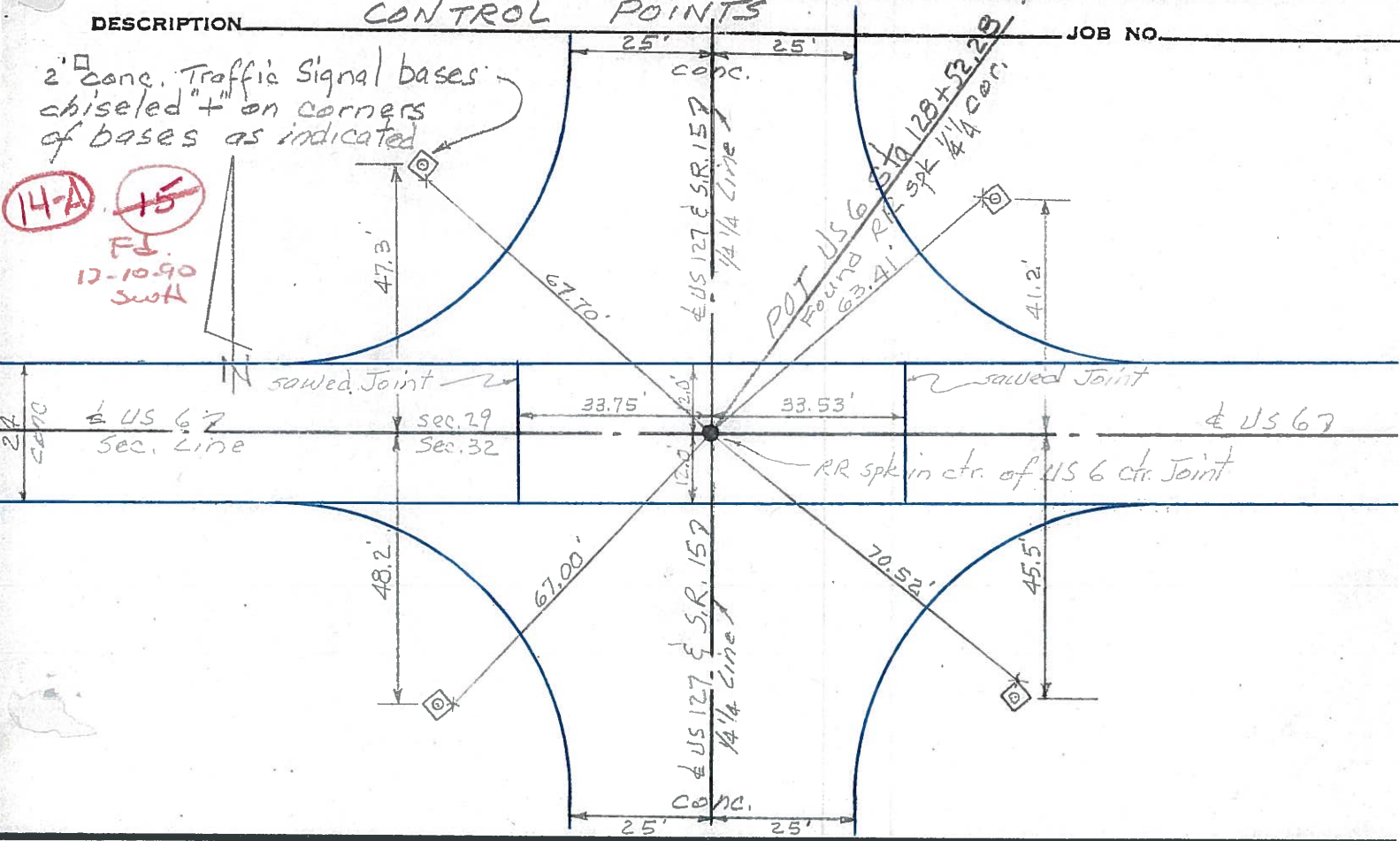
S. R. US 6 WEATHER

SEC Pulaski Twp TEMP

DESCRIPTION CONTROL POINTS JOB NO.

2' conc. Traffic Signal bases
chiseled "+" on corners
of bases as indicated

14-A 15
FD 12-10-90
SWH



PERSONNEL TITLE PERSONNEL TITLE

Louys

COUNTY Wi.

DATE 2-7-58

S. R. 6

WEATHER

SEC Relocation over Rt. #384 TEMP. 20°

DESCRIPTION

Witnesses to Control Points

JOB NO.

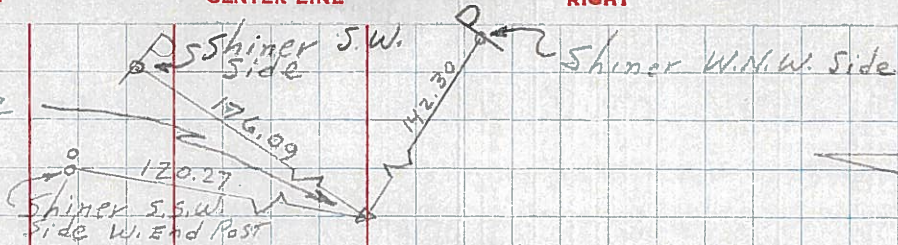
LEFT

CENTER LINE

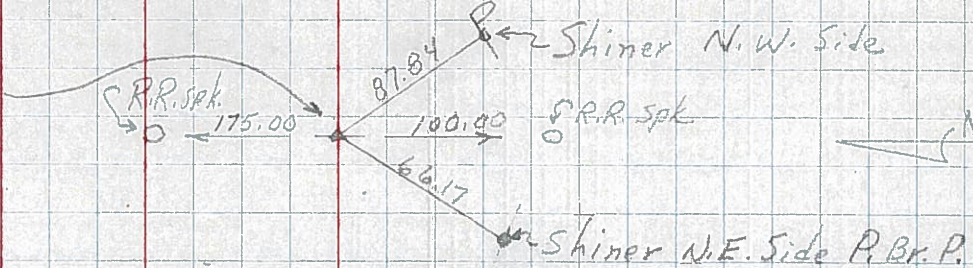
RIGHT

114 R/w only

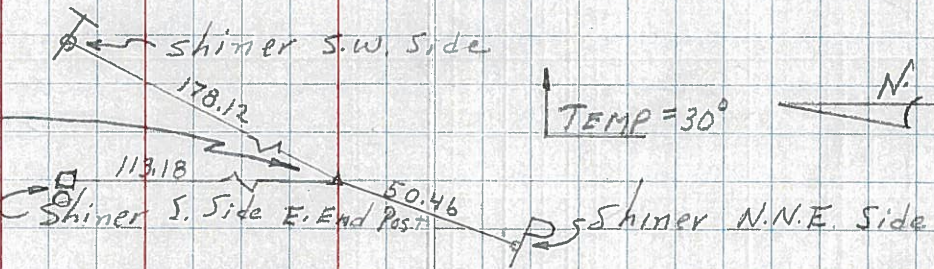
P.I. - sta. 181 + 58.02
(Point is 0.10 LT. OF STR. LINE BETWEEN 1/2 MI. POINTS)
 $\Delta = 0^\circ - 01' RT.$
(SHI. OVER STONE)



113 P.I. - sta. 168 + 35.75
 $\Delta = 0^\circ - 01' RT.$
(TACKED HUB OVER STONE)



112 R/w only
P.I. - sta. 155 + 04.44
 $\Delta = 0^\circ - 00' - 30'' LT.$
(Point is 0.25' RT. OF CONSTR. ON A STR. LINE)
(TACKED HUB OVER STONE)



TEMP = 30°

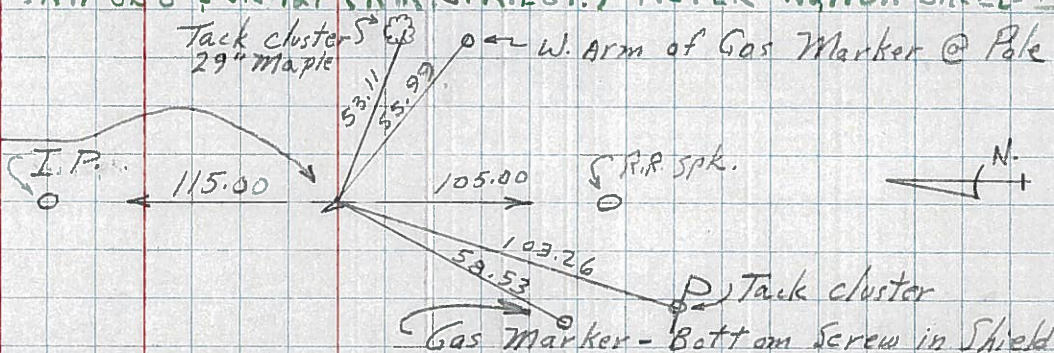


111 P.I. - sta. 141 + 72.52
 $\Delta = 0^\circ - 02' LT.$
R.R. SPK. EST.

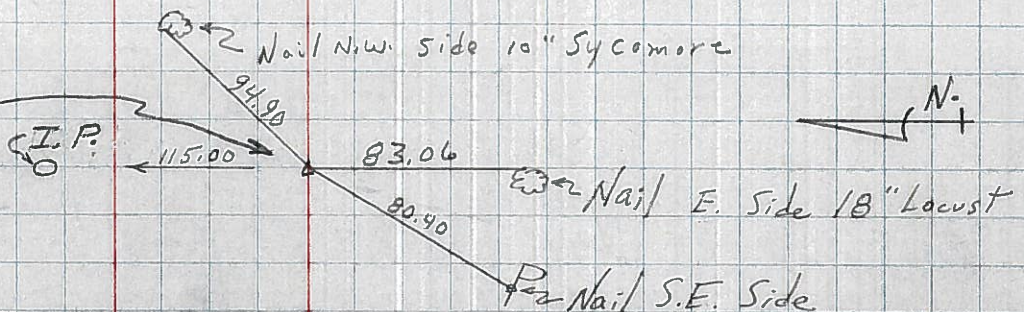


110 - Sta. 128 + 52.28 INT. US 6 & US 127 (R.R. SPK. EST.) REFER - N4110A SHEET OPP. BUL. IN FIELD BOOK

109 GAME AS No. 60 IN FIELD-BOOK.
P.I. - sta. 115 + 11.57
 $\Delta = 0^\circ - 52.5' RT.$
SHI. OVER STONE.



108 P.I. - sta. 88 + 66.28
 $\Delta = 0^\circ - 10' LT.$
SHINER IN PAVT.



113-A