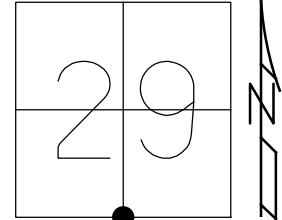


O.D.O.T. DISTRICT 2 SURVEY OFFICE (USE ONLY)

PERSONNEL _____ REFERENCE NO. 15 SHEET 40 OF 41
 NOTES AUBLE DATE 11/6/19 ROUTE US 6
 H.C. LEU WEATHER CLOUDY COUNTY WILLIAMS
 R.C. NASON TEMP. 45° TOWNSHIP PULAKSI
 DWG BY NIESE PID 95997 SECTION 29
 T 6 N R 3 E

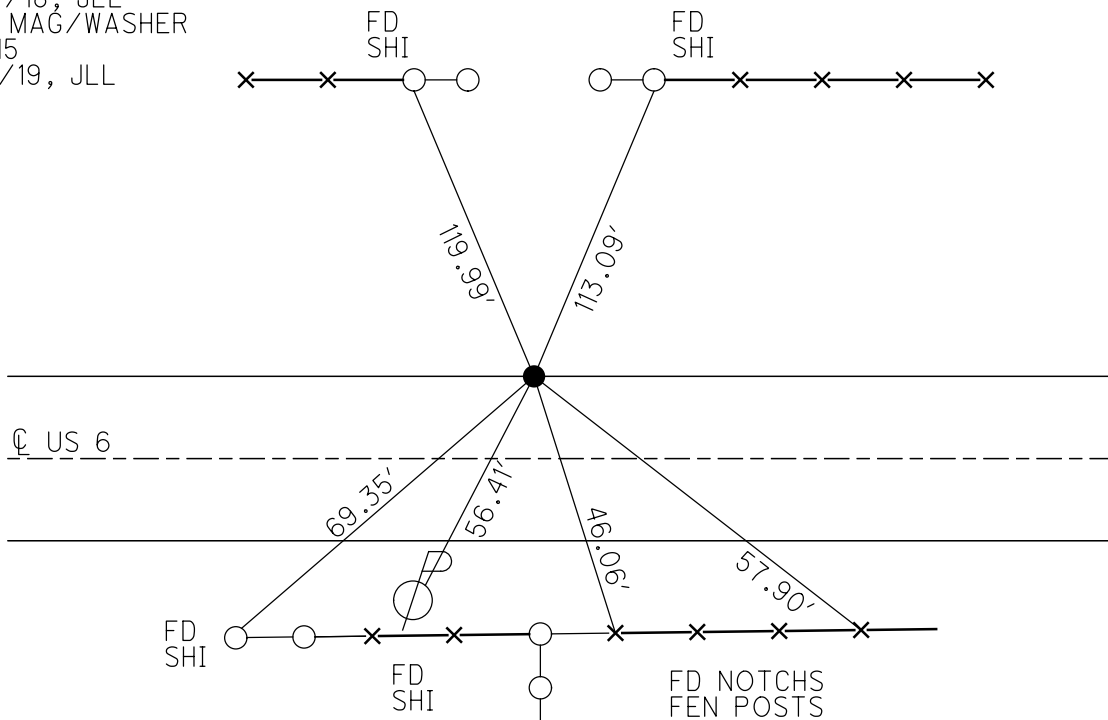
TYPE MONUMENT LG R.R. SPIKE
~~ON SURFACE~~ - BELOW 4"
 OFFSET \odot PAVEMENT 0.5' LT : ~~RT~~
13.1' TO LT EDGE PAVEMENT
 STATION: 721+24.95



HORZ. DATUM: NAD83 2011 GEOID: NAVD88 2012A
 GRID: NORTHING: 653271.732 EASTING: 1407650.690

RECORD:
 PLAN STA 141+72.52
 FD LG.R.R.SPIKE
 3 1/2" DOWN
 12/10/90, SWH
 FD LG.R.R.SPIKE
 4" DOWN
 11/20/95, MRC
 SET P.K./WASHER
 12/15/98, MB
 DUG 4" TO CONC.
 D.N.F.
 2/12/18, JFO
 7/17/18, JLL
 SET MAG/WASHER
 REF15
 11/6/19, JLL

NOTE:
 CALCREF15
 STA 721+35.98
 N : 653319.251
 E : 1407754.278



O.D.O.T. DISTRICT 2 SURVEY OFFICE

PERSONNEL _____

REFERENCE NO. 15

SHEET 11 OF 12

NOTES Barnhisel

H.C. Canterbury

DATE 11-20-95

ROUTE US. 6

R.C. Corder

WEATHER Cloudy

COUNTY Williams

TEMP. +39°F

TOWNSHIP Pulaski

SECTION 29

T 6 N R 3 E

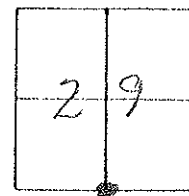
TYPE MONUMENT Lg RR spike

ON SURFACE - BELOW 4" Below

LEFT - ~~C~~ PAVT. - RIGHT 0.5' LT

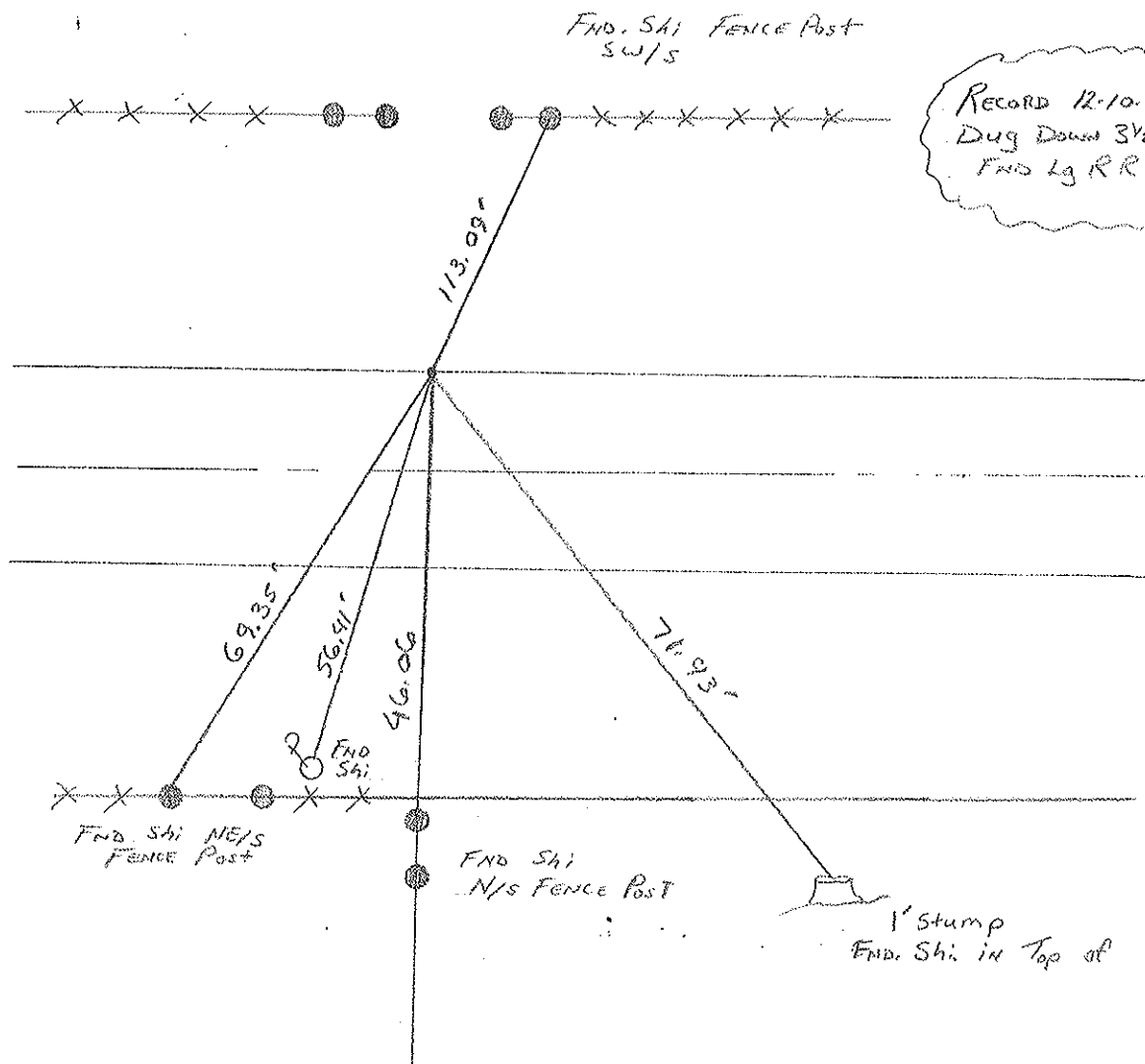
13.1' TO LT EDGE PAVEMENT

S.L.M. 721-24.95



RECORD:
Plan Sta. 191+92.52
RR spk QTR CORNER

RESET PK/WASHER
12-15-98
MB



RECORD 12-10-90
Dug Down 3 1/2" to cor.
FND Lg RR spk.

DRAWN BY TR

O.D.O.T. DISTRICT 2 SURVEY OFFICE

PERSONNEL

REFERENCE NO. 15-A

SHEET 11 OF 11

NOTES BARNHISEL

H.C. CANTERBURY

R.C. CORDES

DATE 11-20-95

WEATHER cloudy

TEMP. +4° C

ROUTE U.S. 6

COUNTY WILLIAMS

TOWNSHIP PULASKI

SECTION 29

T. 6 N. R. 3 E.

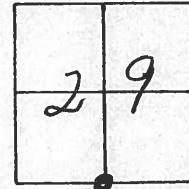
TYPE MONUMENT Lg RR Spk

~~ON SURFACE~~ - BELOW 10.16 cm

LEFT- & PAV'T. - ~~RIGHT~~ 15.24 cm

3.99m TO LT EDGE PAVEMENT

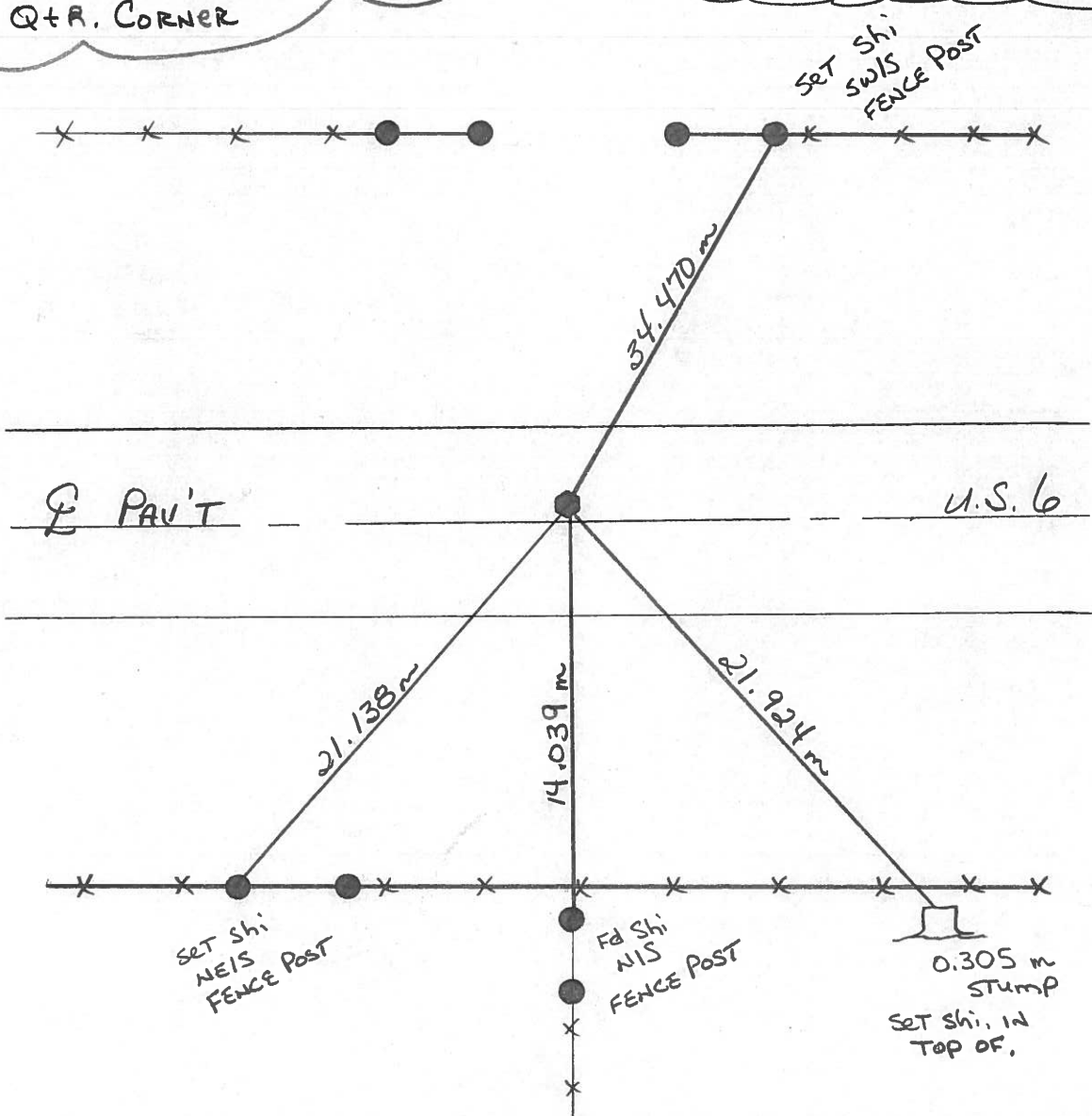
S.L.M. 21+966.051



Record:

PLAN STA. = 22+807.836
Q+R. CORNER

12-10-90 Dug Down To Concrete, Fd Lg RR Spk, 3/2" down, Set PK/WASHER



O.D.O.T. DISTRICT 2 SURVEY OFFICE

PERSONNEL _____

REFERENCE NO. 15

SHEET _____ OF _____

NOTES HOFFMAN

H.C. BARNHISEL

R.C. LOSHRKE

DATE 7-24-86

WEATHER CLEAR

TEMP. 85°

ROUTE US 6

COUNTY Williams

TOWNSHIP Pulaski

SECTION 32

T6 NR 3 E

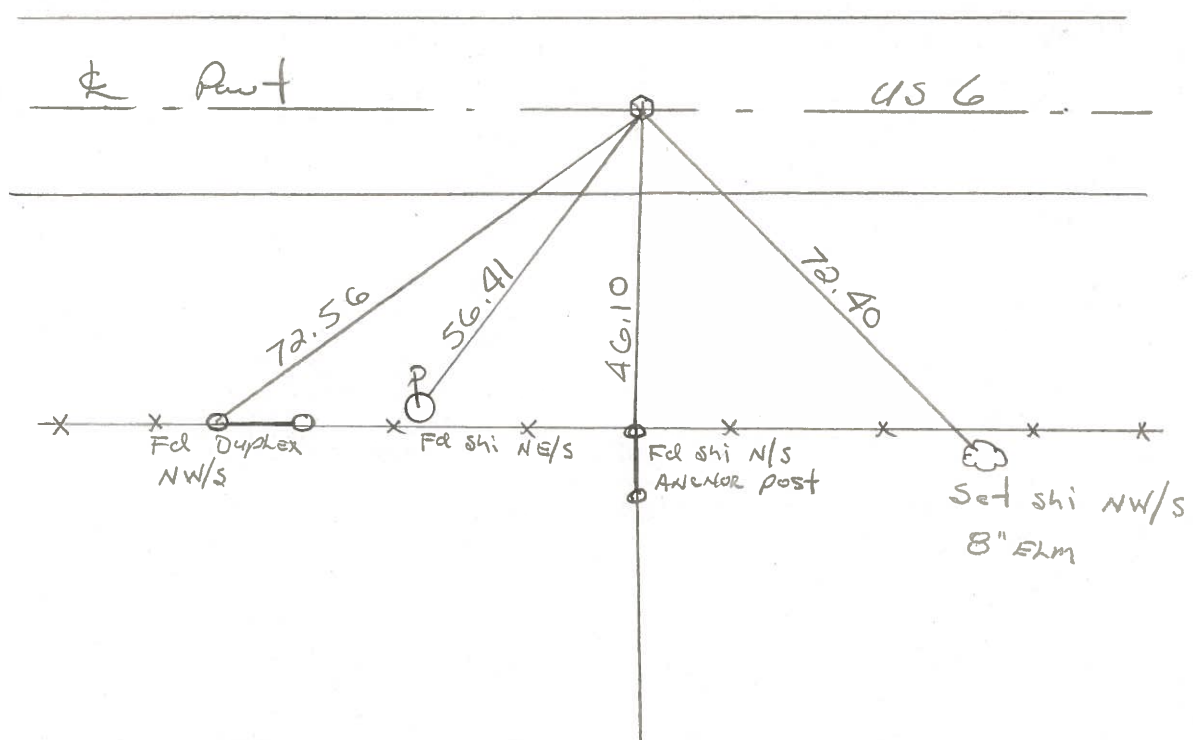
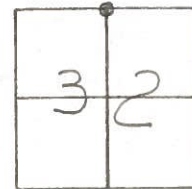
TYPE MONUMENT R.R. SPIKE

~~ON SURFACE~~ - BELOW 4"

~~LEFT - & PAV'T. - RIGHT~~ yes

12' TO RT EDGE PAVEMENT

S.L.M. 721+24.5



County Williams S.R. #6

Date 3 May 84

Township Poleski

Weather Cloudy

Section 32

Temp. 40°

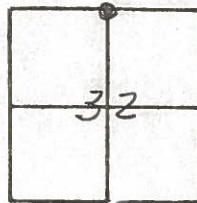
T N, R E

Personnel I. Stone

P. Newser

R. Michalek

D. Curtis

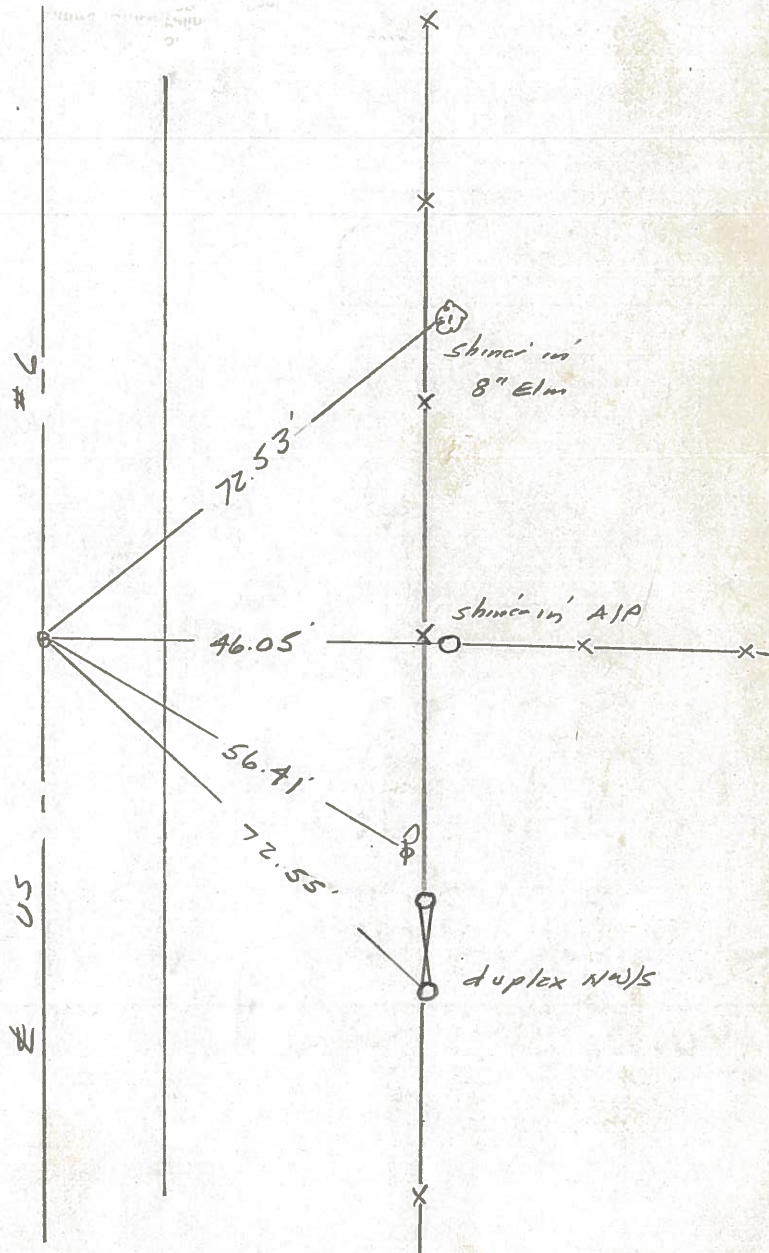


720+93±

REF. NO. 15



N'19 Cor. sec. 32
Fd RR Spk. in center of
24 foot com. pt.
Fd. R.R. Spk. 4" Deep -
5-30-86



PERSONNEL TITLE PERSONNEL TITLE

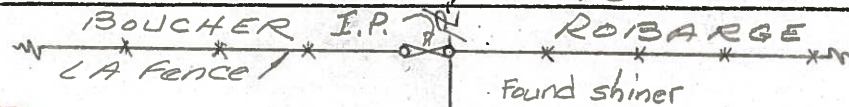
Red Beach
W. Knope

COUNTY Williams DATE Dec 1975

S. R. US 6 WEATHER

SEC. Pulaski Twp. TEMP

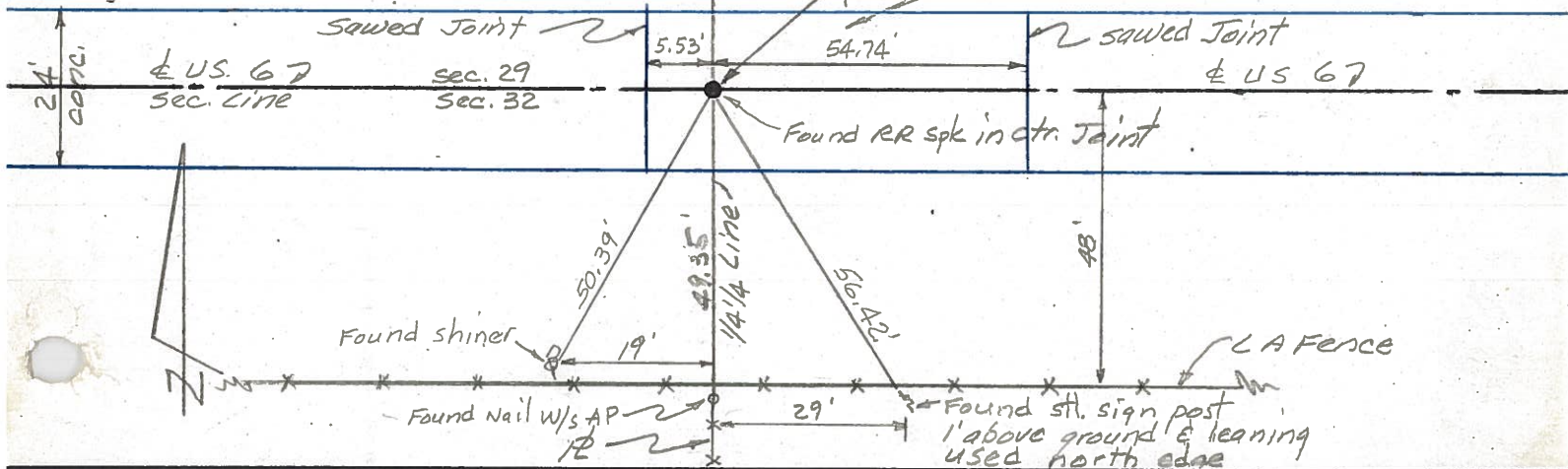
DESCRIPTION CONTROL POINTS JOB NO.



15-A

1/2 mi west to US 127

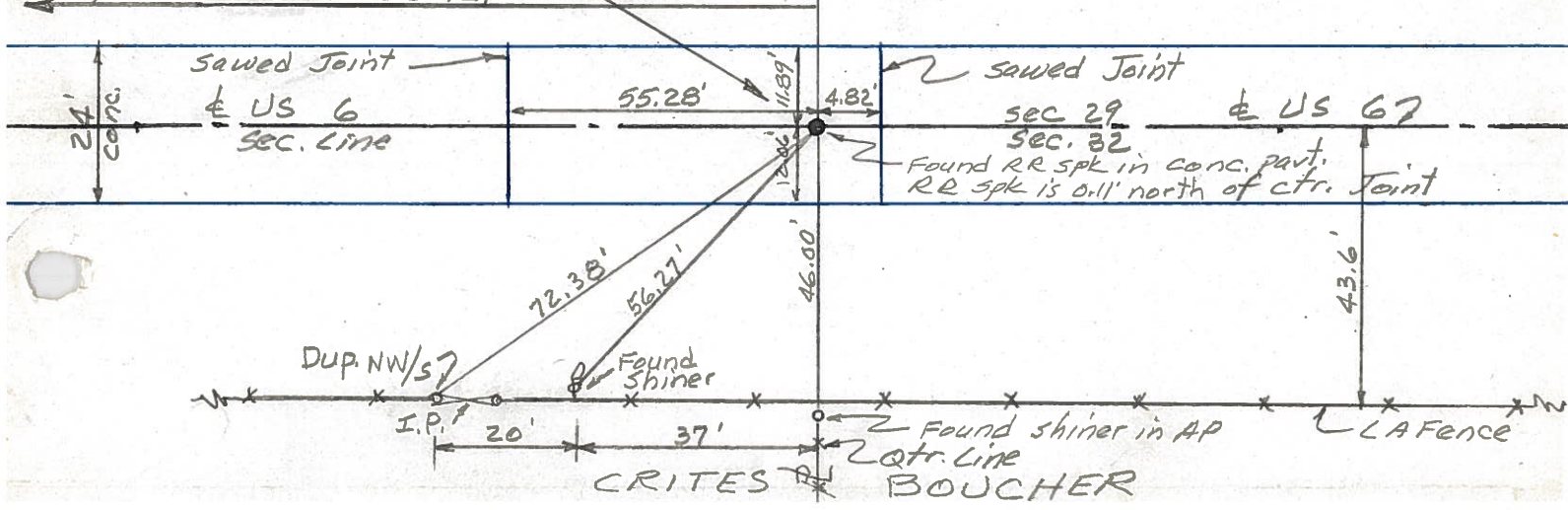
PI Sta. 155 + 04.44
RR spk in conc. part.
RR spk is allegedly over 1/4 STON



15



PI Sta. 141 + 72.52
RR spk off corner
1/4 mi west to US 127



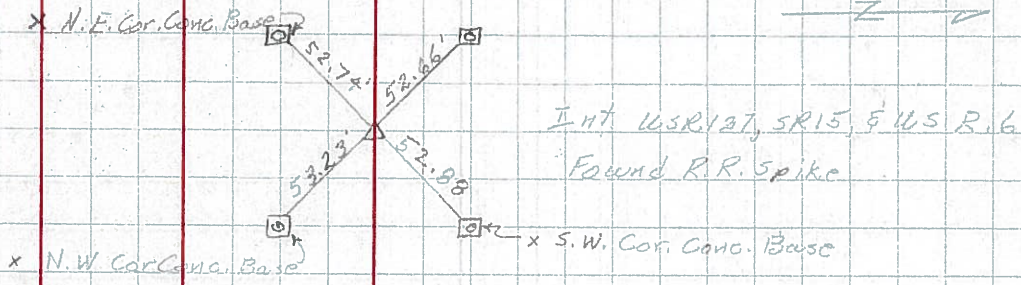
CRITES BOUCHER

PERSONNEL	TITLE	PERSONNEL	TITLE	COUNTY	DATE	WEATHER	TEMP.
Hoover		Mohler		Williams	12-7-60	pty. Cloudy	28°
Ruffer				S. R. 6			
Delventhal							
Young				SEC.			

DESCRIPTION _____ LEFT _____ CENTER LINE _____ RIGHT _____ JOB NO. _____

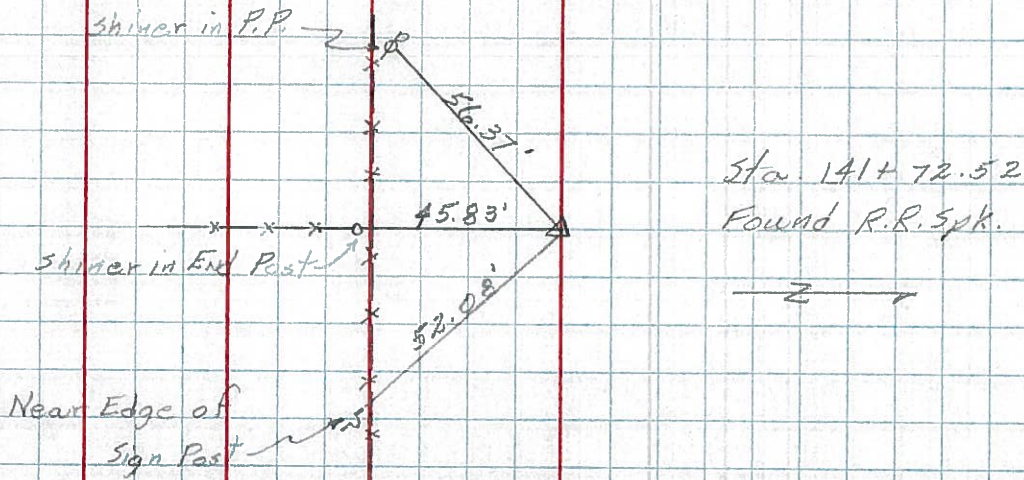
110.

(14-A)



111.

(15)

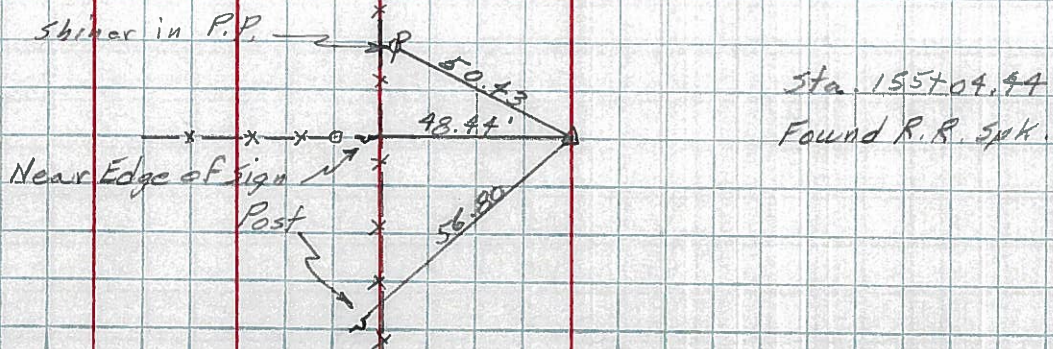


Sta. 141+72.52
Found R.R. Spike.



112.

(15-A)



Sta. 155+04.44
Found R.R. Spike.



PERSONNEL TITLE PERSONNEL TITLE

Louys

COUNTY Wi.

DATE 2-7-58

S. R. 6

WEATHER

SEC Relocation over Rt. #384 TEMP. 20°

DESCRIPTION

Witnesses to Control Points

JOB NO.

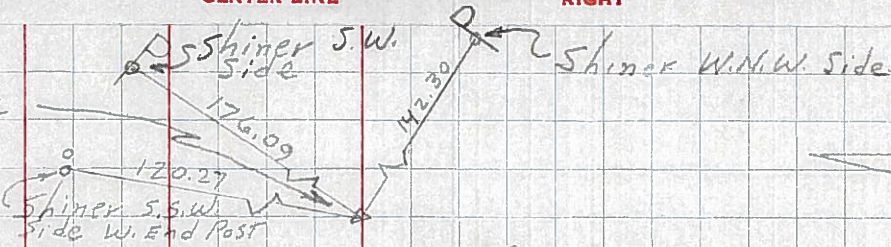
LEFT

CENTER LINE

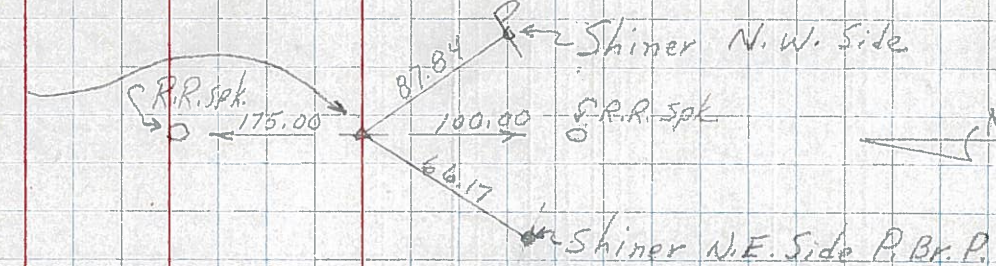
RIGHT

114
16-A R/w only

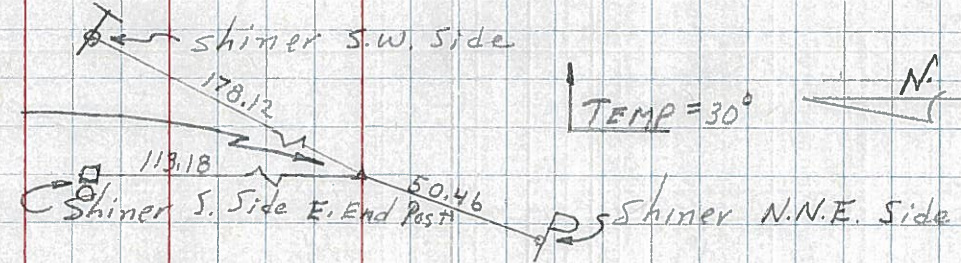
P.I. - sta. 181 + 58.02
(Point is 0.10 LT. of Str. Line between 1/2 M. Points)
 $\Delta = 0^\circ - 01' RT.$
(SHI. OVER STONE)



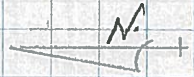
113
16 P.I. - sta. 168 + 35.75
 $\Delta = 0^\circ - 01' RT.$
(TACKED HUB OVER STONE)



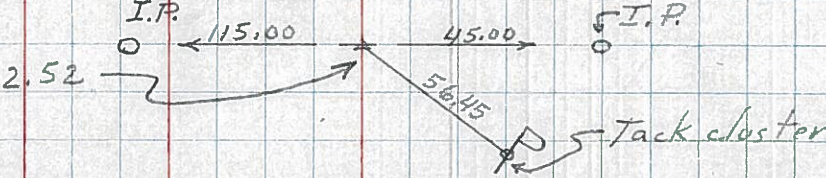
112
15-A R/w only
P.I. - sta. 155 + 04.44
 $\Delta = 0^\circ - 00' - 30'' LT.$
(Point is 0.25' RT. of Constr. on a Str. Line)
(TACKED HUB OVER STONE)



TEMP = 30°

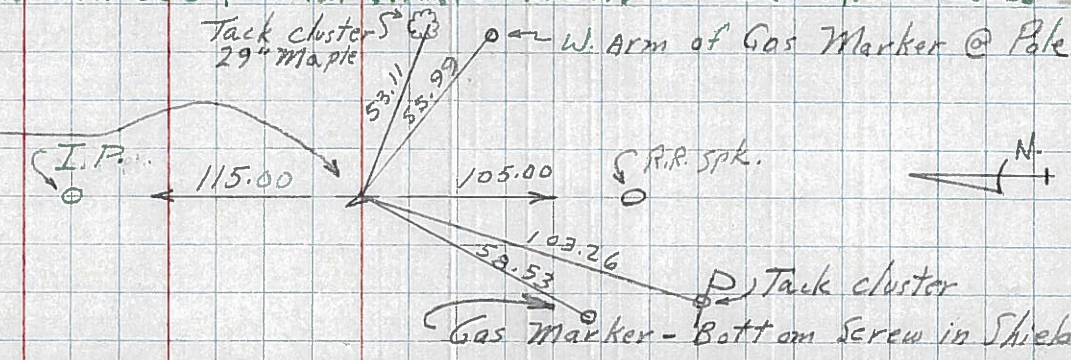


111
15 P.I. - sta. 141 + 72.52
 $\Delta = 0^\circ - 02' LT.$
R.R. SPK. EST.

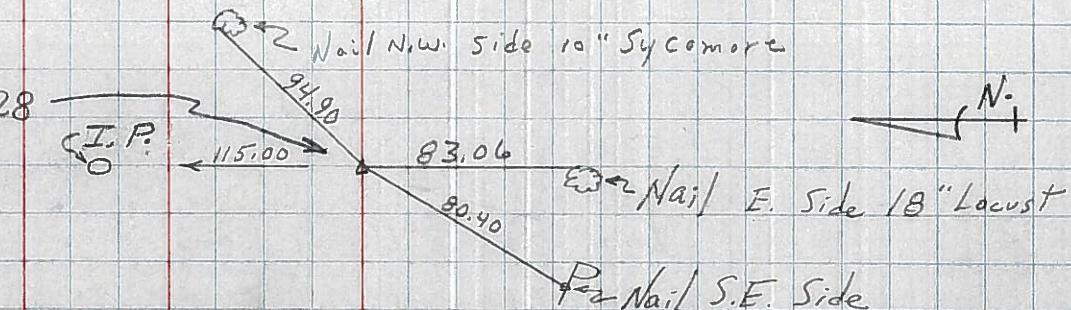


110 - Sta. 128 + 52.28 INT. US 6 & US 127 (R.R. SPK. EST.) REFER - N410A SHEET OPP. NOT HERE BUT IN FIELD BOOK

109 - SAME AS No. 60 IN FIELD BOOK.
P.I. - sta. 115 + 11.57
 $\Delta = 0^\circ - 52.5' RT.$
SHI. OVER STONE.



108
P.I. - sta. 88 + 66.28
 $\Delta = 0^\circ - 10' LT.$
SHINER IN PAVT.



13-A