

O.D.O.T. DISTRICT 2 SURVEY OFFICE (USE ONLY)

PERSONNEL

REFERENCE NO. 15 A

SHEET 41 OF 41

NOTES AUBLE  
 H.C. LEU  
 R.C. NASON  
O'DONNELL, NIESE

DATE 9/9/19  
 WEATHER SUNNY  
 TEMP. 65°

ROUTE US 6  
 COUNTY WILLIAMS  
 TOWNSHIP PULASKI  
 SECTION 29  
 T 6 N R 3 E

DWG BY NIESE PID 95792

TYPE MONUMENT R.R.SPIKE

~~ON SURFACE~~ - BELOW 6"

OFFSET  $\odot$  PAVEMENT ON LT : RT

- TO - EDGE PAVEMENT

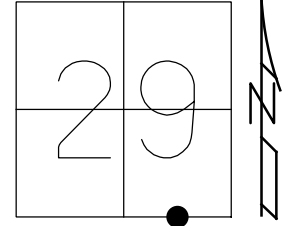
STATION: 734+67.98

HORZ.DATUM: NAD83 2011

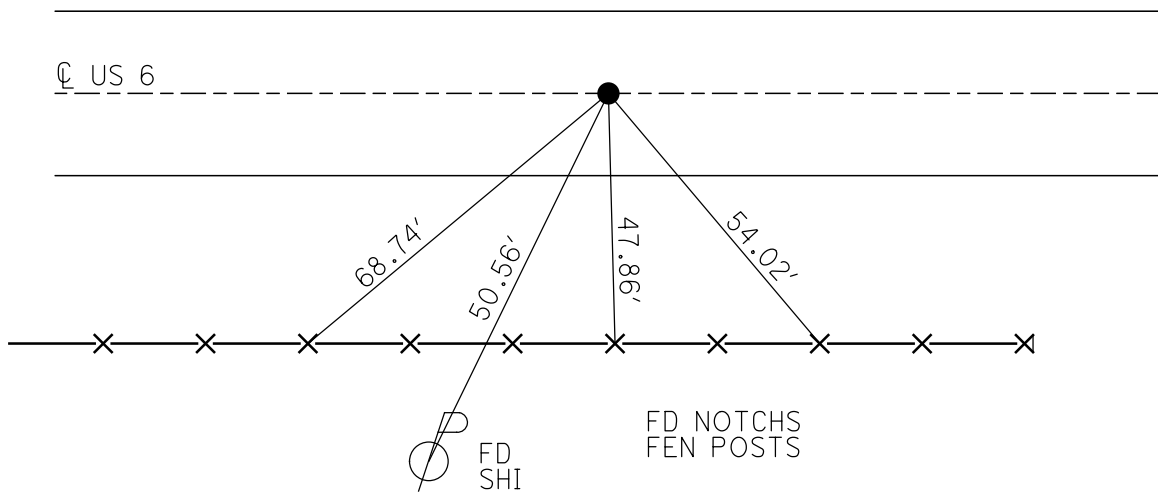
GEOID: NAVD88 2012A

GRID: NORTHING: 653244.262

EASTING: 1408982.470



RECORD: PLAN  
 STA.155+04.44  
 FD R.R.SPIKE  
 5/30/86  
 FD P.K./WASHER  
 11/17/95, MB  
 SET P.K./WASHER  
 12/15/98, MB  
 D.N.F.  
 CALCA15  
 2/12/18, JFO  
 REFA15  
 8/29/19, JFO  
 SET MAG/WASHER  
 11/7/19, JFO



O.D.O.T. DISTRICT 2 SURVEY OFFICE

PERSONNEL \_\_\_\_\_

REFERENCE NO. 15-A

SHEET 12 OF 12

NOTES BARNHISEL

H.C. CANTERBURY

DATE 11-17-95

ROUTE US. 6

R.C. CORDES

WEATHER SNOW

COUNTY Williams

TEMP. +32°F

TOWNSHIP PULASKI

SECTION 29

T6 N R 3 E

TYPE MONUMENT PK/WASHER

ON SURFACE - ~~BELOW~~ YES

~~LEFT- & PAV'T.~~ RIGHT YES

TO EDGE PAVEMENT

S.L.M. 73462.16

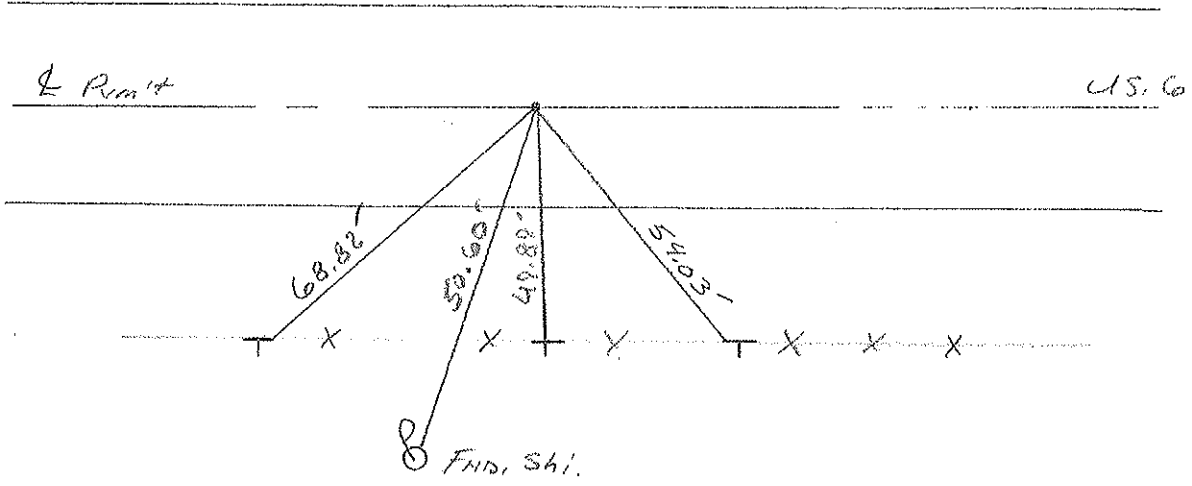


RECORD!

Plan Sta 155+04.44  
RR spk in CONC PAVT  
RECORD 5-30-86!

FIND RR spk in center  
of 24' CONC. PAVT.  
V16 CORNER SEC. 32

Re-set PK/washer  
12-15-98 MB



# O.D.O.T. DISTRICT 2 SURVEY OFFICE

PERSONNEL \_\_\_\_\_

REFERENCE NO. 15-A

SHEET \_\_\_\_\_ OF \_\_\_\_\_

NOTES BARNHISEL

H.C. CANTERBURY

R.C. CORDES

DATE 11-17-95

WEATHER SNOW

TEMP. +0° C

ROUTE U.S. 6

COUNTY WILLIAMS

TOWNSHIP PULASKI

SECTION 29

T 6 N R 3 E

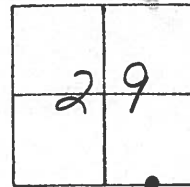
TYPE MONUMENT PK/WASHER

ON SURFACE - ~~BELOW~~ YES

~~LEFT - & PAV'T. - RIGHT~~ YES

TO EDGE PAVEMENT

S.L.M. 734+62.16 / SLK



RECORD:

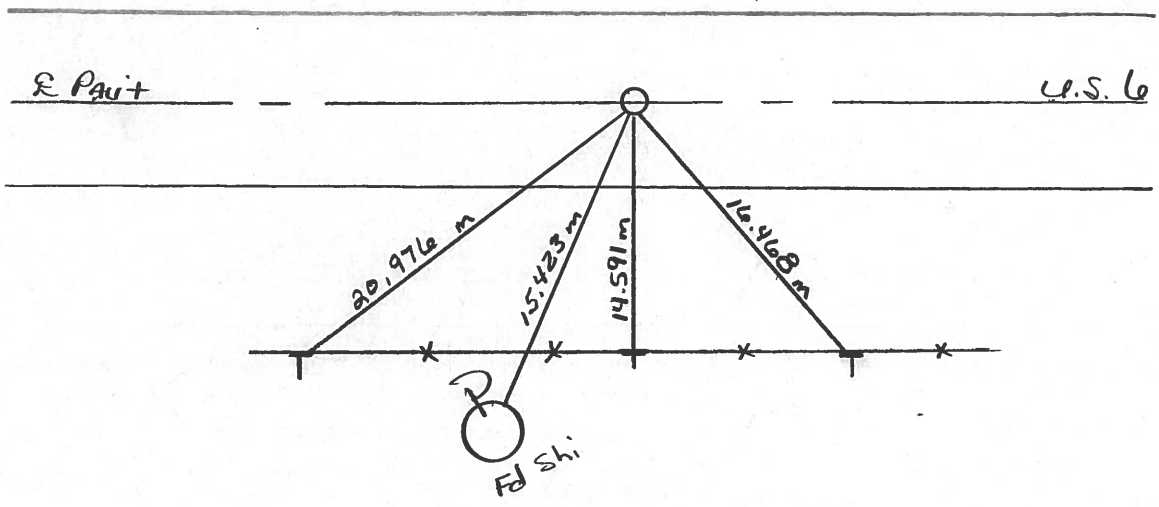
PLAN STA: 155+04.44

R.R. SPK IN CONC. PAVT

RECORD: FD RR SPK IN CENTER OF 24' CONC. PAVT

1/16 COR. SEC. 32

5-30-86



# O.D.O.T. DISTRICT 2 SURVEY OFFICE

**PERSONNEL**

BILL GREEN  
VAN DUSEN

REFERENCE NO. 15-A

SHEET 1 OF 22

**NOTES**

H.C. BARNHISEL

R.C. KUSZ

BURNETT

DATE 7 JULY 92

WEATHER CLEAR

TEMP. 68°

ROUTE U.S. 6

COUNTY WILLIAMS

TOWNSHIP PULASKI

SECTION 32

T 6 N R 3 E

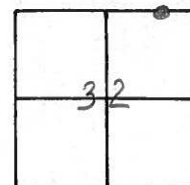
TYPE MONUMENT PK & WASHER

ON SURFACE - ~~BELOW~~ YES

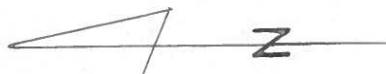
~~LEFT - & PAV'T. - RIGHT~~ YES

11.2 TO RT EDGE PAVEMENT

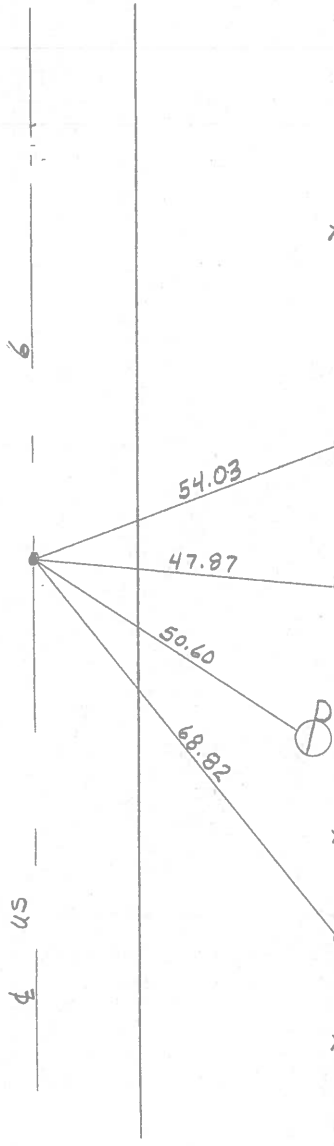
S.L.M. 735 + 13



RESET PK & WASHER  
10-26-92  
MB



DITCH



Fd RR SPIKE IN CENTER  
OF 24' CONC. PVT.  
1/4 COR., SEC 32

Fd RR SPIKE 4" DEEP  
5-30-86

SET NOTCH  
FOURTH POST EAST OF POLE  
1' UP

SET NOTCH  
SECOND POST EAST OF POLE  
1' UP

SET NOTCH  
THIRD POST WEST OF  
POLE 2' UP

Q.D.O.T. DISTRICT 2 SURVEY OFFICE

SHEET 2 OF

County Williams S.R. 6

Date 3 May 84

Township Poleski

Weather Cloudy

Section 32

Temp. 42°

T    N, R    E

Personnel I. Stone

P. Neuse

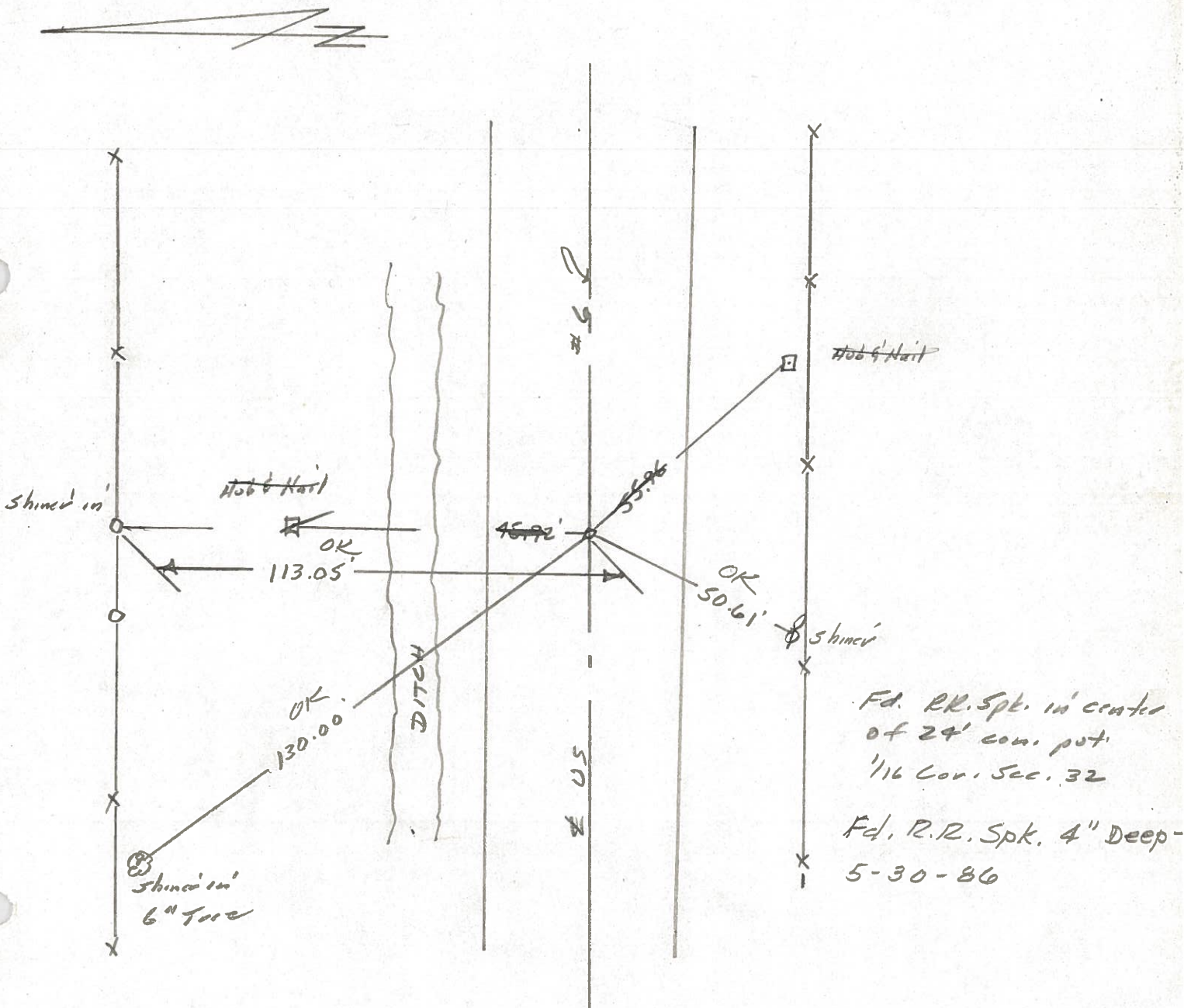
R. Michalak

D. Curtis



734+25±

REF. NO. 15-19



PERSONNEL TITLE PERSONNEL TITLE

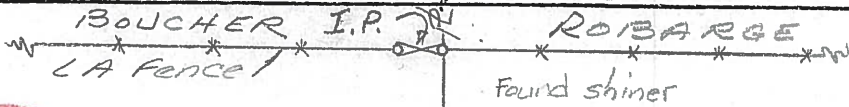
Red Beach  
W. Knape

COUNTY Williams DATE Dec 1975

S. R. US 6 WEATHER

SEC. Pulaski Twp. TEMP

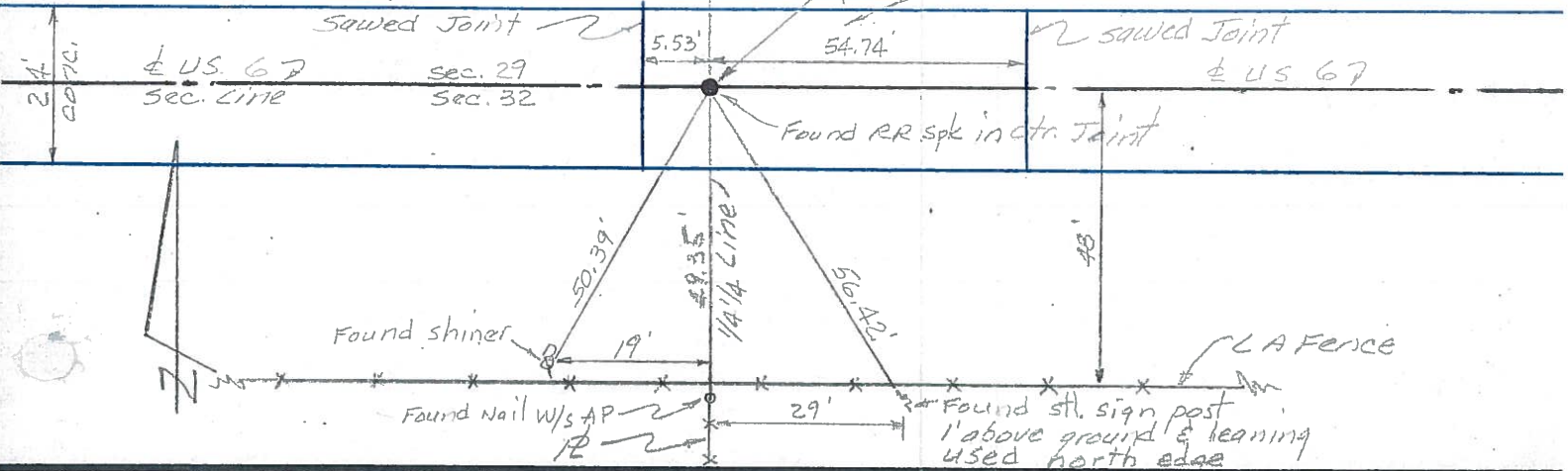
DESCRIPTION CONTROL POINTS JOB NO.



15-A

1/2 mi west to US 127

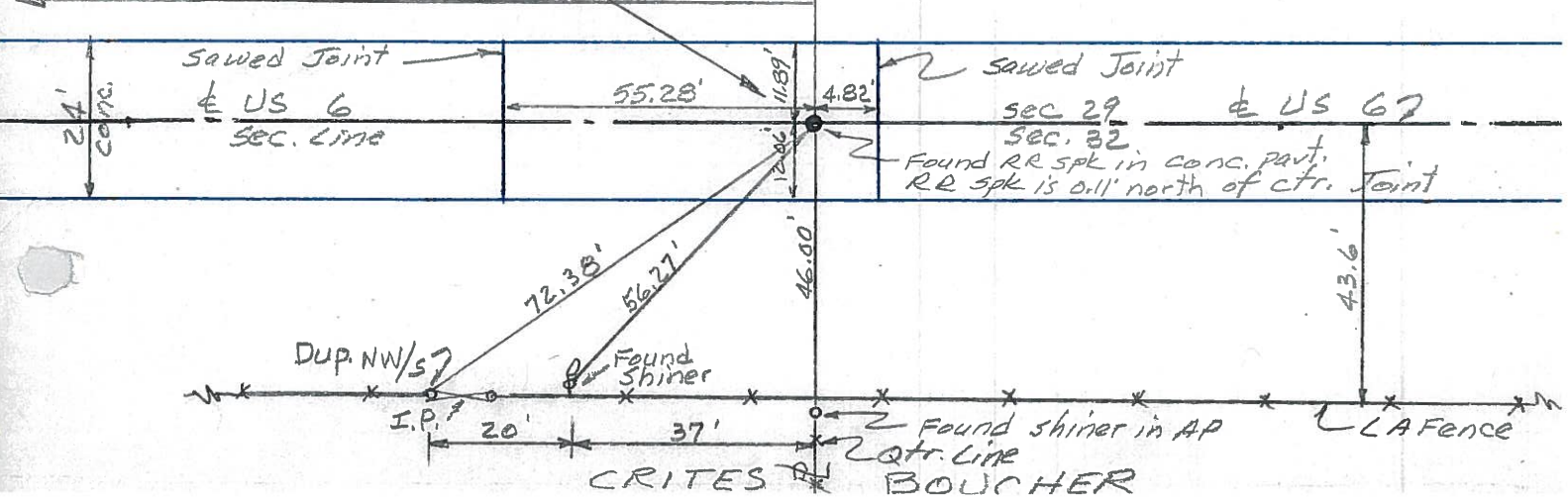
PI Sta. 155 + 04.44  
RR spk in conc. part.  
RR spk is allegedly over 1/4 1/4 station



15



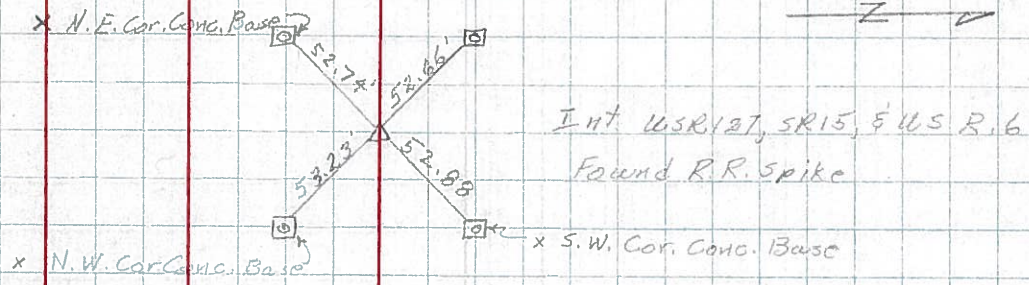
PI Sta. 141 + 72.52  
RR spk Qtr. Corner  
1/4 mi west to US 127



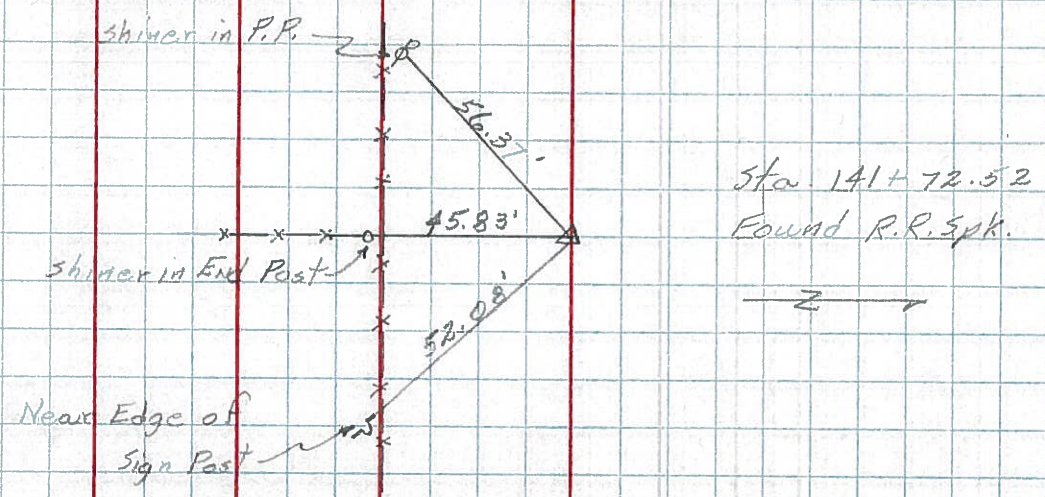
PERSONNEL	TITLE	PERSONNEL	TITLE	COUNTY	DATE	WEATHER	TEMP.
Hoover		Mohler		Williams	12-7-60	Partly Cloudy	28°
Ruffer				S. R. 6			
Delventhal							
Young							

DESCRIPTION	LEFT	CENTER LINE	RIGHT	JOB NO.
-------------	------	-------------	-------	---------

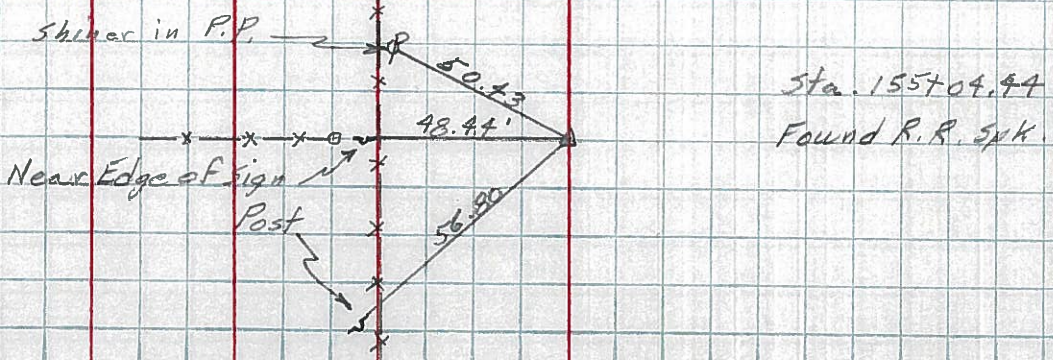
110.  
(14-A)



111.  
(15)



112.  
(15-A)



PERSONNEL TITLE PERSONNEL TITLE

Louys

COUNTY Wi.

DATE 2-7-58

S. R. 6

WEATHER

SEC Relocation over Rt. #384 TEMP. 20°

DESCRIPTION

Witnesses to Control Points

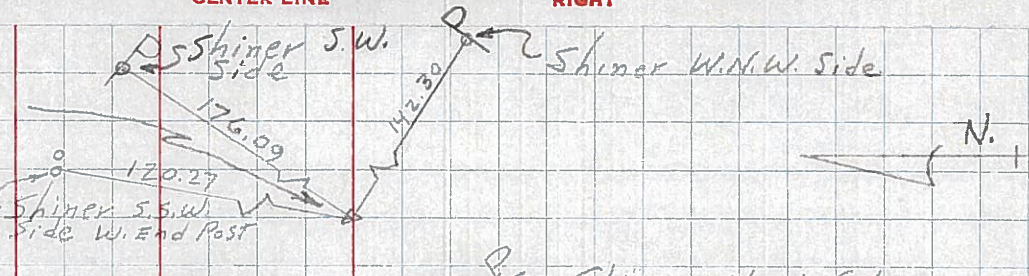
JOB NO.

LEFT

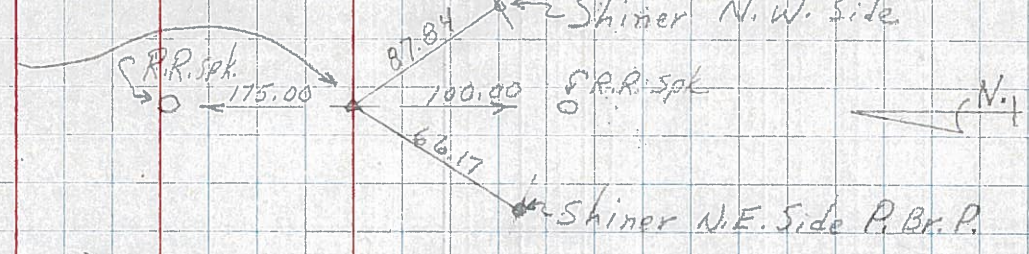
CENTER LINE

RIGHT

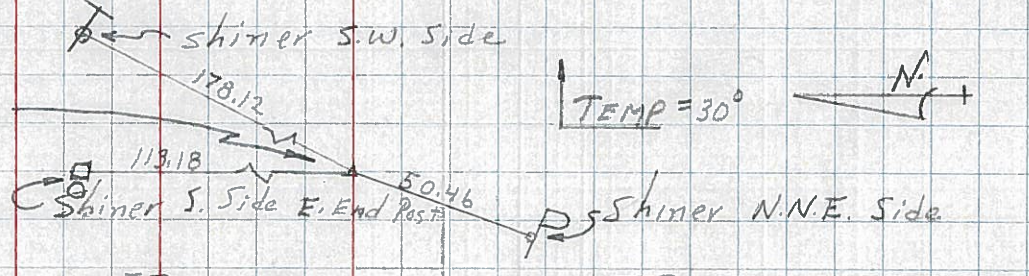
**114**  
**16-A** R/w only  
 P.I. - sta. 181 + 58.02  
 (Point is 0.10 LT. OF STR. LINE BETWEEN 1/2 MI. POINTS)  
 $\Delta = 0^\circ - 01' RT.$   
 (SHI. OVER STONE)



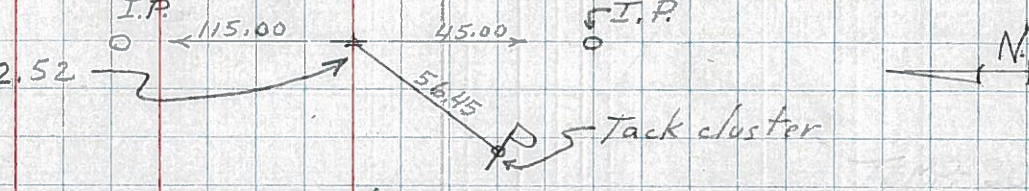
**113**  
**16** P.I. - sta. 168 + 35.75  
 $\Delta = 0^\circ - 01' RT.$   
 (TACKED HUB OVER STONE)



**112**  
**15-A** R/w only  
 P.I. - sta. 155 + 04.44  
 $\Delta = 0^\circ - 00' - 30'' LT.$   
 (Point is 0.25' RT. OF CONSTR. ON A STR. LINE)  
 (TACKED HUB OVER STONE)

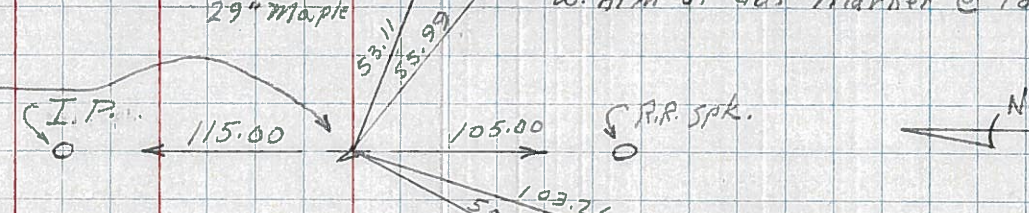


**111**  
**15** P.I. - sta. 141 + 72.52  
 $\Delta = 0^\circ - 02' LT.$   
 R.R. SPK. EST.

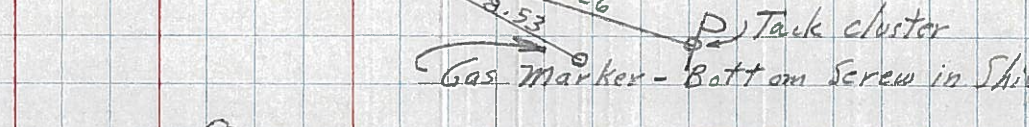


**110** - Sta. 128 + 52.28 INT. US 6 & US 127 (R.R. SPK. EST.) REFER - N410A SHEET OPP. BUL IN FIELD BOOK

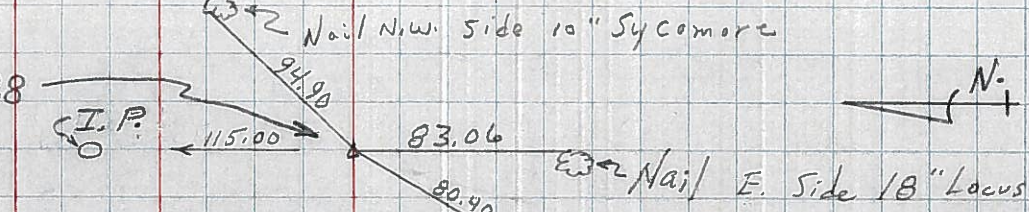
GAME AS No. 60  
**109** - IN FIELD-BOOK.  
 P.I. - sta. 115 + 11.57  
 $\Delta = 0^\circ - 52.5' RT.$   
 Shi. OVER STONE.



**14**



**108**  
 P.I. - sta. 88 + 66.28  
 $\Delta = 0^\circ - 10' LT.$   
 SHINER IN PAVT.



**13-A**