

O.D.O.T. DISTRICT 2 SURVEY OFFICE (USE ONLY)

PERSONNEL

REFERENCE NO. 16

SHEET 1 OF 19

NOTES O'DONNELL

DATE 8/29/19

ROUTE US 6

H.C. LEU

WEATHER SUNNY

COUNTY WILLIAMS

R.C. NIESE

TEMP. 62°

TOWNSHIP PULASKI

SECTION 32

DWG BY NIESE PID 95792

T 6 N R 3 E

TYPE MONUMENT MAG/WASHER

ON SURFACE - ~~BELOW~~ ON

OFFSET Q PAVEMENT ON LT : RT

- TO - EDGE PAVEMENT

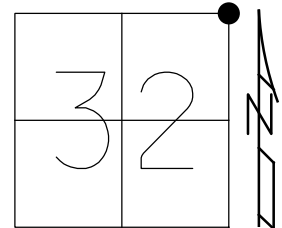
STATION: 747+98.54

HORZ.DATUM: NAD83(2011)

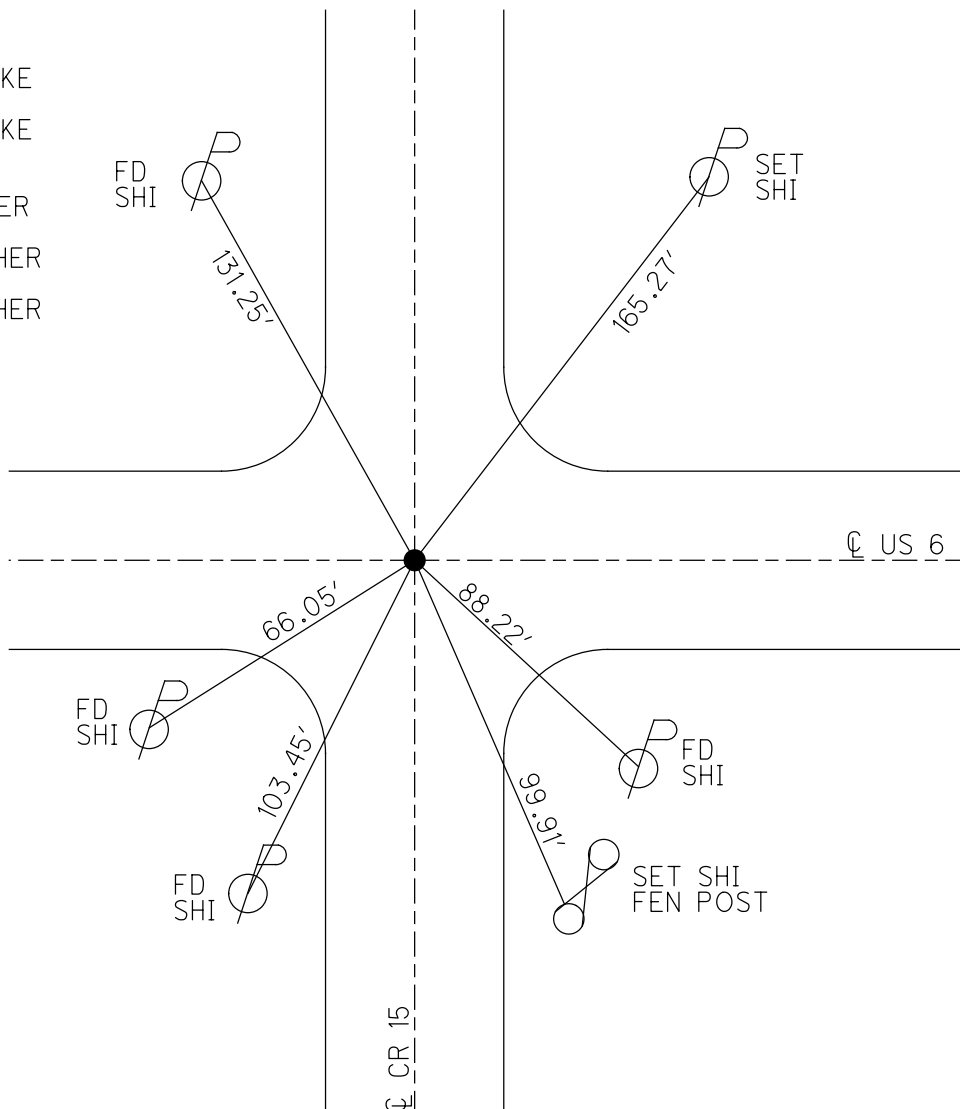
GEOID: 2012A

GRID: NORTHING: 653216.941

EASTING: 1410312.745



RECORD:  
 FD LG.R.R.SPIKE  
 6/2/86  
 FD LG.R.R.SPIKE  
 4" DOWN  
 7/7/92  
 FD P.K./WASHER  
 4/25/02, MB  
 SET MAG/WASHER  
 8/26/03, MB  
 SET MAG/WASHER  
 REF16  
 2/12/18,  
 8/29/19,  
 11/7/19, JFO



# O.D.O.T. DISTRICT 2 SURVEY OFFICE

PERSONNEL

REFERENCE NO. 16

SHEET 1 OF 20

NOTES Barnhisel

H.C. Canterbury

R.C. Moser

DATE 4-25-02

WEATHER Sunny/windy

TEMP. +45°

ROUTE U.S. 6

COUNTY WILLIAMS

TOWNSHIP PULASKI

SECTION 29

T 6 N R 3 E

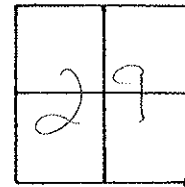
TYPE MONUMENT P.K. + Washer

ON SURFACE - BELOW on surface

~~LEFT~~ - € PAV'T. - RIGHT

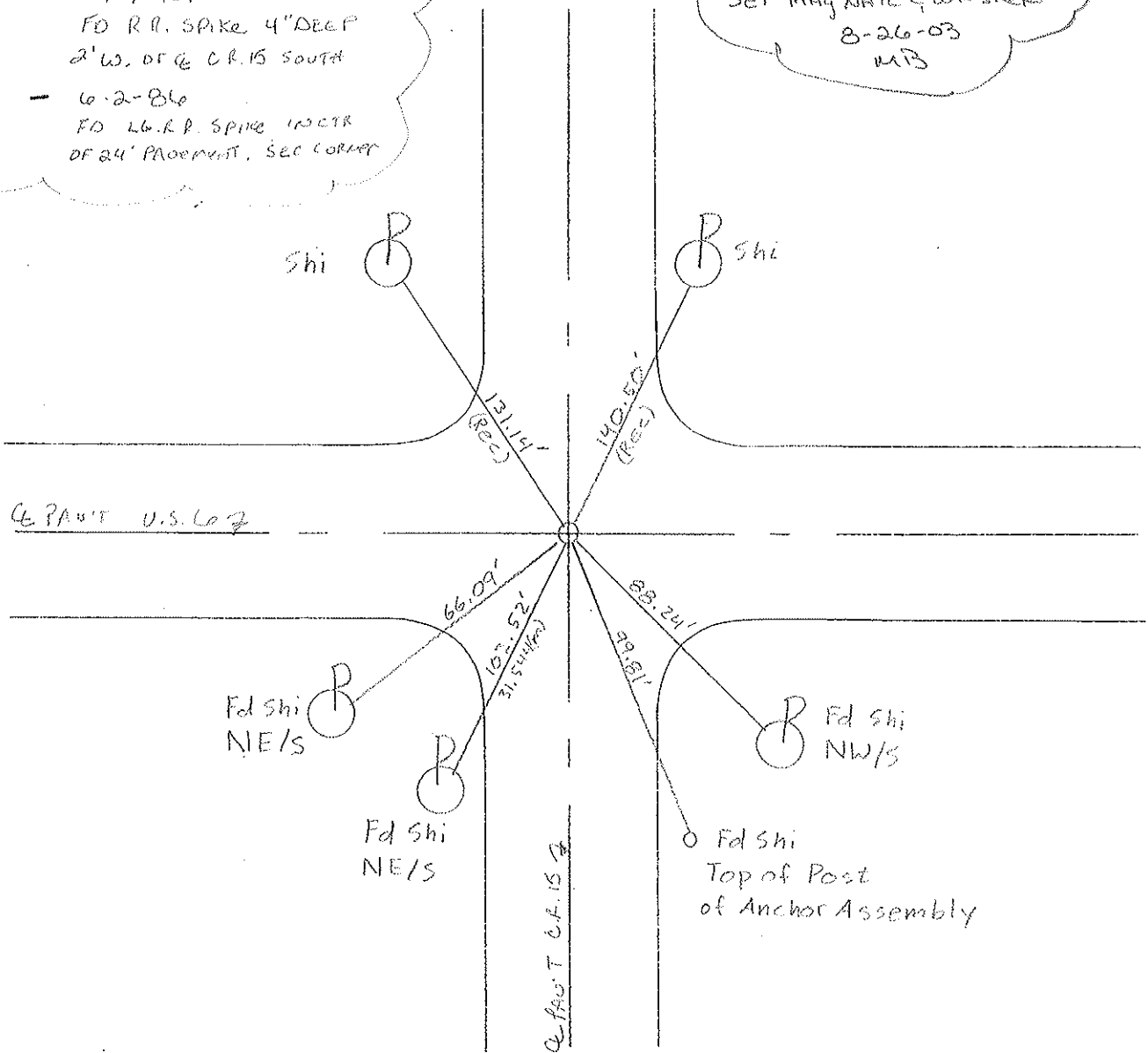
TO EDGE PAVEMENT

S.L.M. 748+45



RECORD: - 77-92  
 FD R.R. SPIKE 4" DEEP  
 2' W. OF & C.R. 15 SOUTH  
 - 6-2-86  
 FD L.B.R.P. SPIKE IN CTR  
 OF 24' PAVEMENT, SEC CORNER

SET MAG NAIL & WASHER  
 8-26-03  
 MB



Resurveyed 2002

# O.D.O.T. DISTRICT 2 SURVEY OFFICE

PERSONNEL

NOTES BILL GREEN  
VAN DUSEN  
H.C. BARNHISEL  
R.C. KUSZ  
BURNETT

REFERENCE NO. 16

SHEET 2 OF 22

DATE 7 July 92  
WEATHER cloudy  
TEMP. 68°

ROUTE US 6  
COUNTY Williams  
TOWNSHIP Pulaski  
SECTION 28, 29, 32, 33  
T 6 N R 3 E

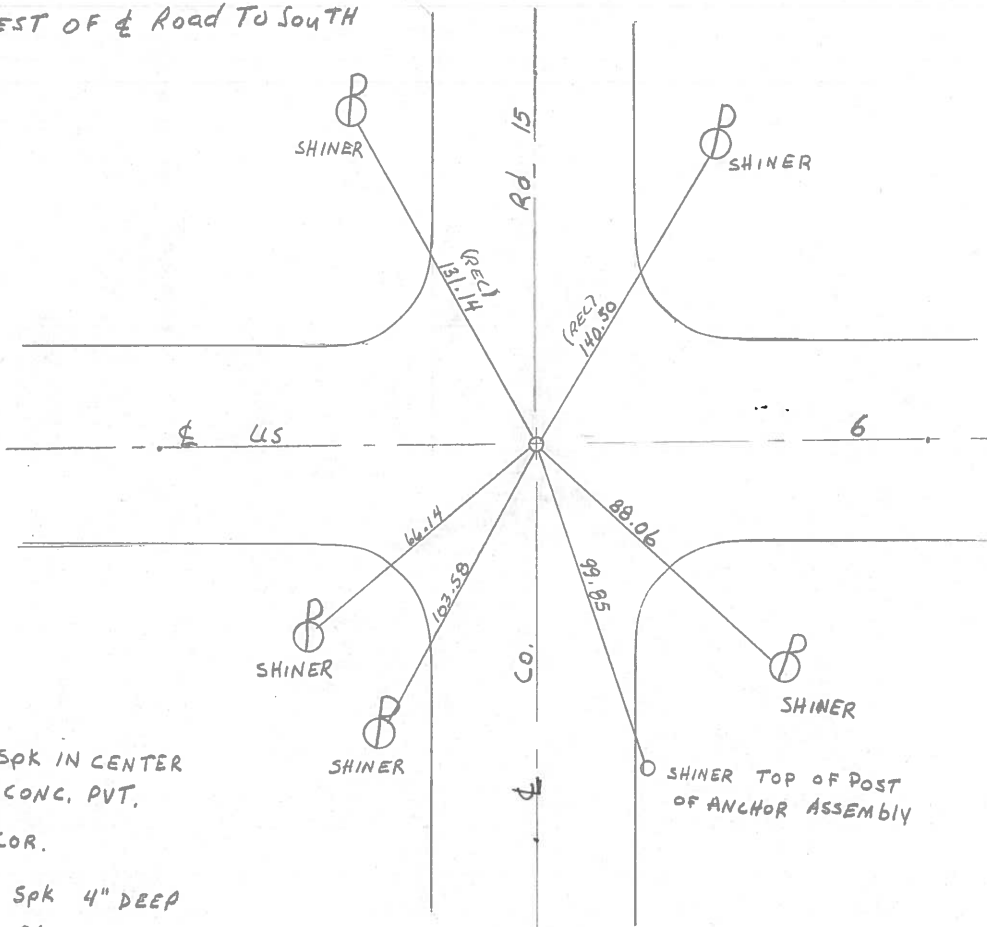
TYPE MONUMENT PK # WASHER  
ON SURFACE - BELOW YES  
~~LEFT - & PAV'T. - RIGHT~~ YES  
TO EDGE PAVEMENT  
S.L.M. 748+45

|    |    |
|----|----|
| 29 | 28 |
| 32 | 33 |



Fd RR Spk 4" DEEP.  
ON & US6  
2' WEST OF & Road To South

SET PK # WASHER  
10-26-92  
BYD



Fd. RR. Spk IN CENTER  
OF 24' CONC. PVT.  
SEC. COR.  
Fd. R.R. Spk 4" DEEP  
6-2-86

County Williams S.R. #6

Date 3 May 84

Township Pulaski

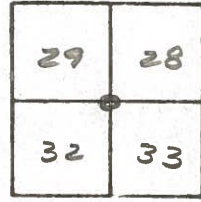
Weather Cloudy

Section 28-29-32-33

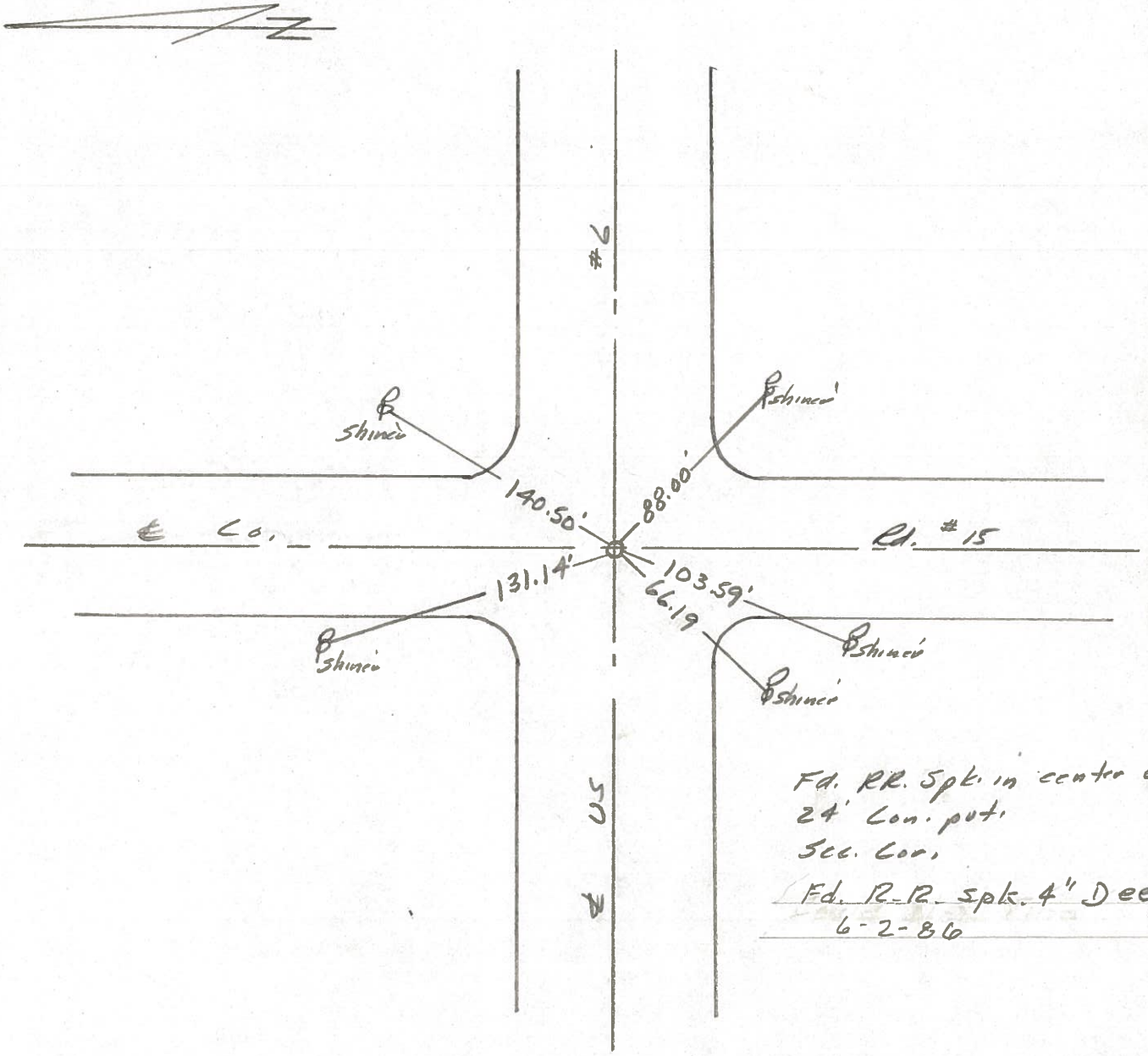
Temp. 42°

T N, R E

Personnel 1. Stone  
P. Neuser  
R. Michalak  
D. Curtis



REF. NO. 16



PERSONNEL TITLE PERSONNEL TITLE

Red Beach  
W. Knape

COUNTY Williams DATE 8 Aug 75

S. R. US 6 WEATHER

SEC. 32 | 28  
33 | Pulaski TWP TEMP.

DESCRIPTION

CONTROL POINTS

JOB NO.

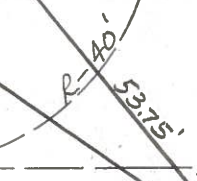
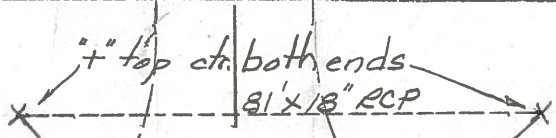
16

PI Sta. 168+35.75  
Found RR spk in conc.  
RR spk allegedly over cor. stone

North edge 24' conc. pav't.

The "+" in the Sta. 168+00 stencil

24' conc. pav't. edge



RR spk is 0.48' west of ctr. Joint  
RR spk is 0.10' north of ctr. Joint

± AN ± EB US 67

37.90'

64.48'

The "+" in the Sta. 169+00 Stencil



30" RCP

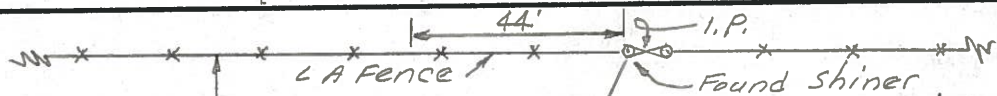
"+" top ctr. east end  
BM Elev. 734.23  
Sta. 168+99-44' et.  
Elevation from the 195  
Survey level circuit

16-A

± Co Rd #15  
sec 28  
RR spk  
24' conc.  
sec 33

PI Sta. 181+58.02'  
Found RR spk in conc.

Meas. 1322.60'



Meas. 1318.38'

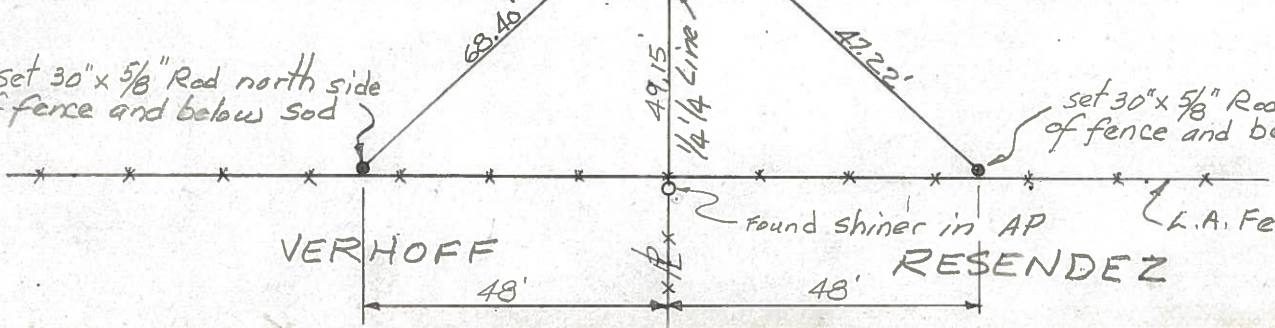


sawed Joint  
± US 67  
RR spk is 0.09' N. of ctr. Joint

sawed Joint  
sec. 28 ± US 67  
sec. 33 sec. line

set 30" x 5/8" Red north side of fence and below sod

set 30" x 5/8" Red north side of fence and below sod



VERHOFF

RESENDEZ

found shiner in AP

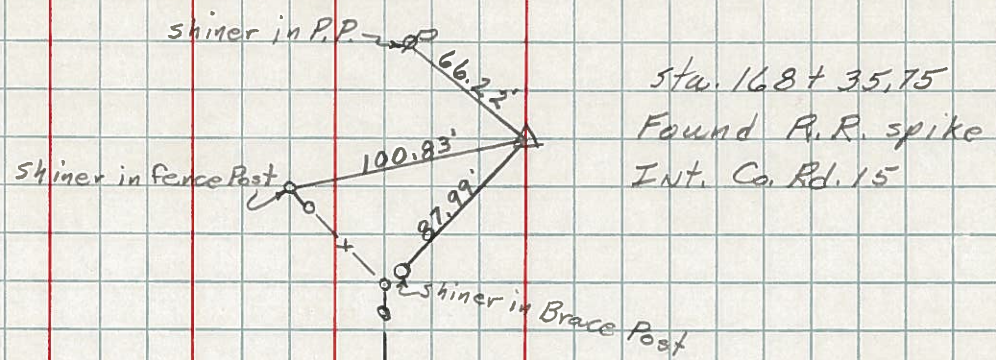
L.A. Fence

| PERSONNEL  | TITLE  | PERSONNEL | TITLE | COUNTY   | DATE    | WEATHER    | TEMP. |
|------------|--------|-----------|-------|----------|---------|------------|-------|
| Hoover     | Mohler |           |       | Williams | 12-7-60 | pty Cloudy | 32    |
| Ruffner    |        |           |       | S. R. 6  |         |            |       |
| Delventhal |        |           |       | SEC.     |         |            |       |
| Young      |        |           |       |          |         |            |       |

DESCRIPTION \_\_\_\_\_ LEFT \_\_\_\_\_ CENTER LINE \_\_\_\_\_ RIGHT \_\_\_\_\_ JOB NO. \_\_\_\_\_

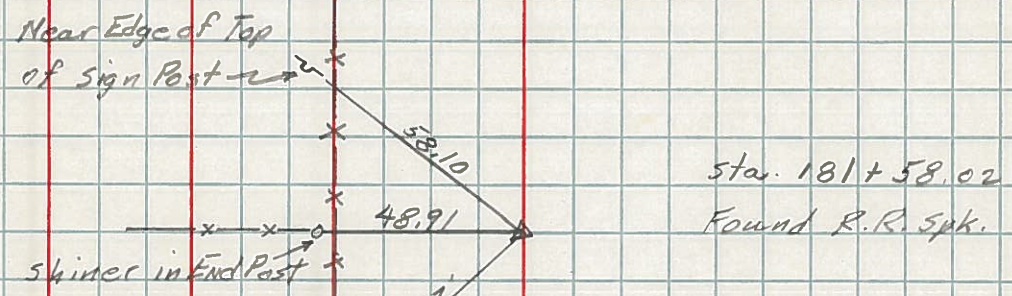
113.

(116)



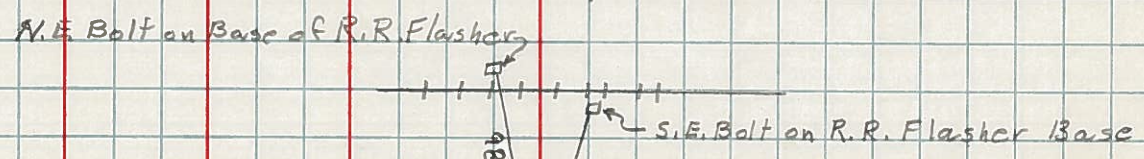
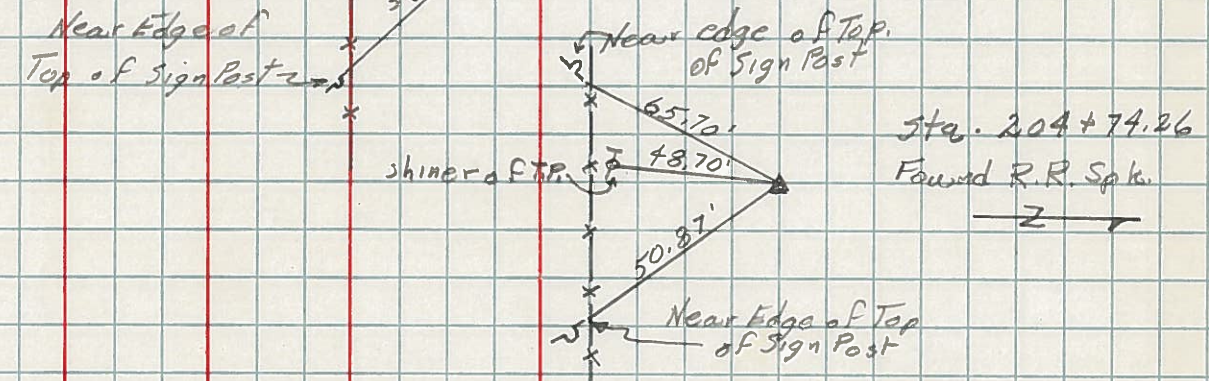
114.

(116-A)



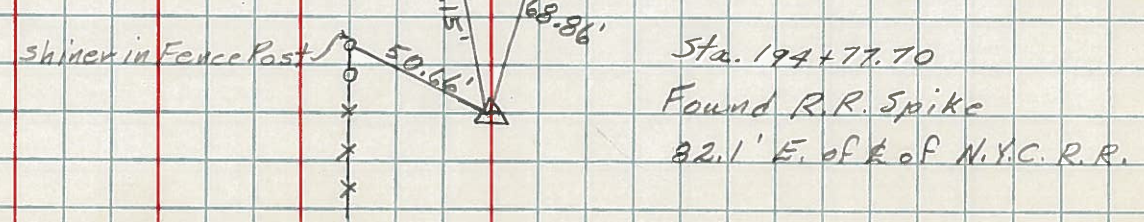
116.

(116-C)



115.

(116-B)



PERSONNEL TITLE PERSONNEL TITLE

Louys

COUNTY Wi.

DATE 2-7-58

S. R. 6

WEATHER

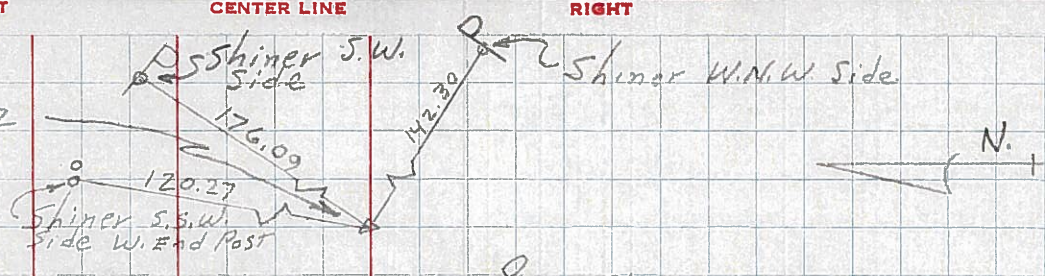
SEC Relocation over Rt. #384 TEMP 20°

DESCRIPTION

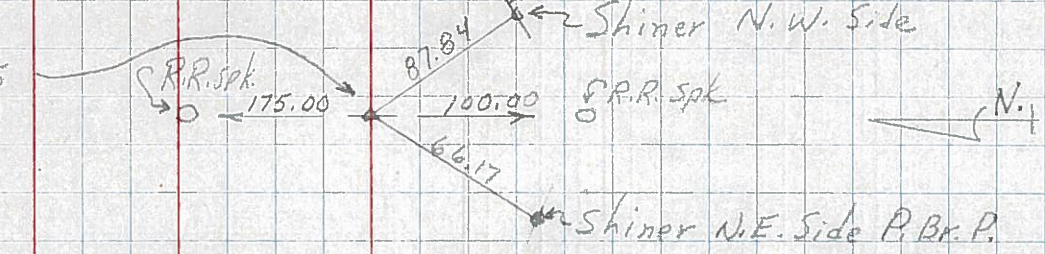
Witnesses to Control Points

JOB NO.

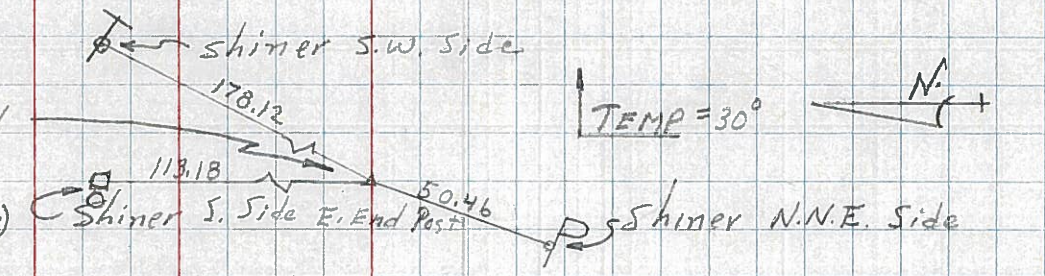
11A  
 16-A R/w only  
 P.I. - sta. 181+58.02  
 (Point is 0.10 LT. OF STR. LINE BETWEEN 1/2 MI. POINTS)  
 $\Delta = 0^\circ - 01' RT.$   
 (SHI. OVER STONE)



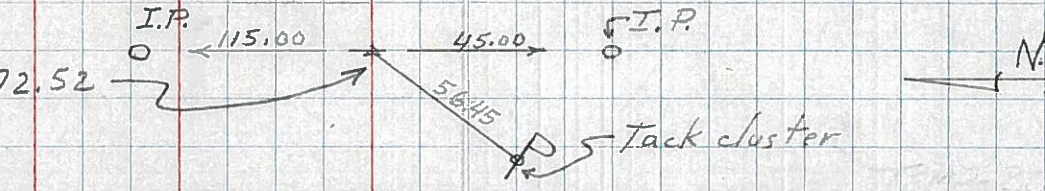
113  
 16 P.I. - sta. 168+35.75  
 $\Delta = 0^\circ - 01' RT.$   
 (TACKED HUB OVER STONE)



112  
 15-A R/w only  
 P.I. - sta. 155+04.44  
 $\Delta = 0^\circ - 00' - 30'' LT.$   
 (Point is 0.25' RT. OF & CONST. ON A STR. LINE)  
 (TACKED HUB OVER STONE)

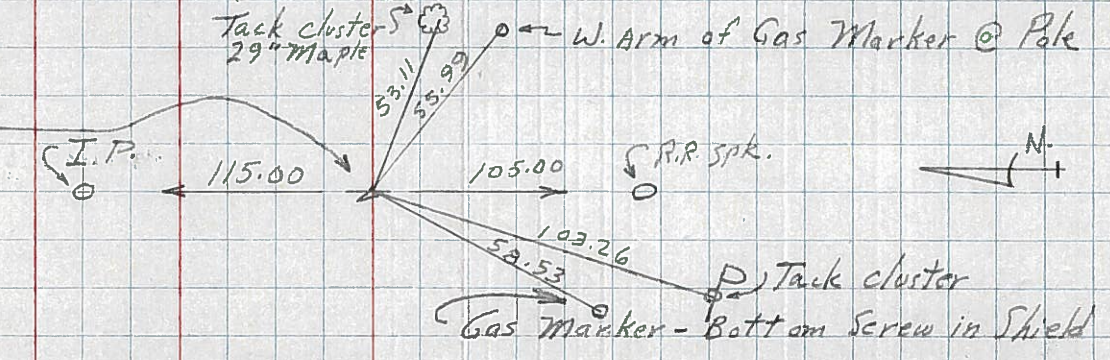


111  
 15 P.I. - sta. 141+72.52  
 $\Delta = 0^\circ - 02' LT.$   
 R.R. SPK. EST.



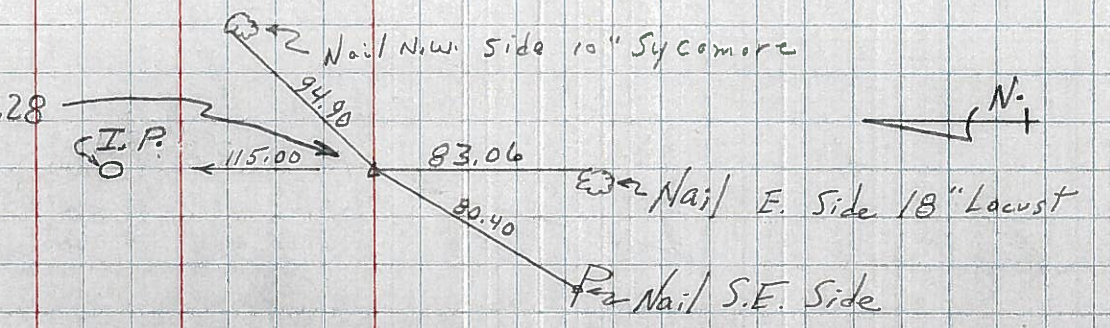
110 - Sta. 128+52.28 INT. US 6 & US 127 (R.R. SPK. EST.) REFER - NQ10A SHEET OPP. BUT IN FIELD BOOK

109 - GAME AS NO. 60 IN FIELD BOOK  
 P.I. - sta. 115+11.57  
 $\Delta = 0^\circ - 52.5' RT.$   
 SHI. OVER STONE.



14

108  
 P.I. - sta. 88+66.28  
 $\Delta = 0^\circ - 10' LT.$   
 SHINER IN PAVT.



13-A