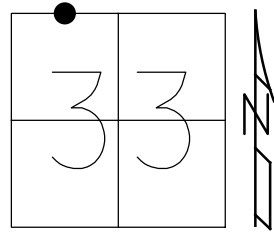


O.D.O.T. DISTRICT 2 SURVEY OFFICE (USE ONLY)

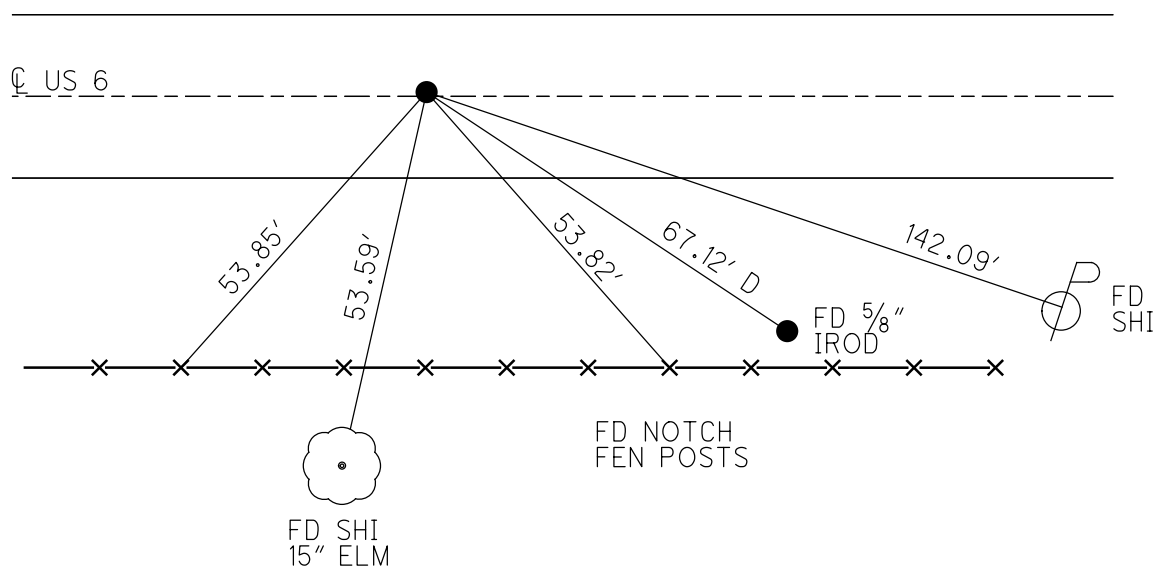
PERSONNEL _____ REFERENCE NO. 16 A SHEET 2 OF 19
 NOTES LEU DATE 8/29/19 ROUTE US 6
 H.C. LEU WEATHER SUNNY COUNTY WILLIAMS
 R.C. NIESE TEMP. 63° TOWNSHIP PULASKI
O'DONNELL, AUBLE SECTION 33
 DWG BY NIESE PID 95792 T 6 N R 3 E

TYPE MONUMENT P.K./WASHER
 ON SURFACE - ~~BELOW~~ ON
 OFFSET \varnothing PAVEMENT 0.4' LT : ~~RT~~
11.2' TO LT EDGE PAVEMENT
 STATION: 761+21.34



HORZ. DATUM: NAD83(2011) GEOID: 2012A
 GRID: NORTHING: 653189.791 EASTING: 1411635.275

RECORD:
 FD LG.R.R.SPIKE
 7/7/92
 FD P.K./WASHER
 4/25/02, MB
 SET MAG/WASHER
 8/26/03, MB
 SET MAG/WASHER
 REFA16
 12/12/18
 11/7/19, JFO



O.D.O.T. DISTRICT 2 SURVEY OFFICE

PERSONNEL

REFERENCE NO. 16-A

SHEET 2 OF 20

NOTES Barnhisel

H.C. Canterbury

R.C. Moser

DATE 4-25-02

WEATHER clear/windy

TEMP. +45°

ROUTE U.S. 6

COUNTY WILLIAMS

TOWNSHIP PULASKI

SECTION 33

T6 N R 3 E

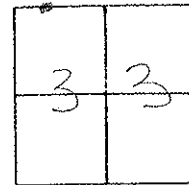
TYPE MONUMENT PK + Washer

ON SURFACE - ~~BELOW~~ on surface

LEFT - ~~C~~ PAV'T. - RIGHT 0.4' LT.

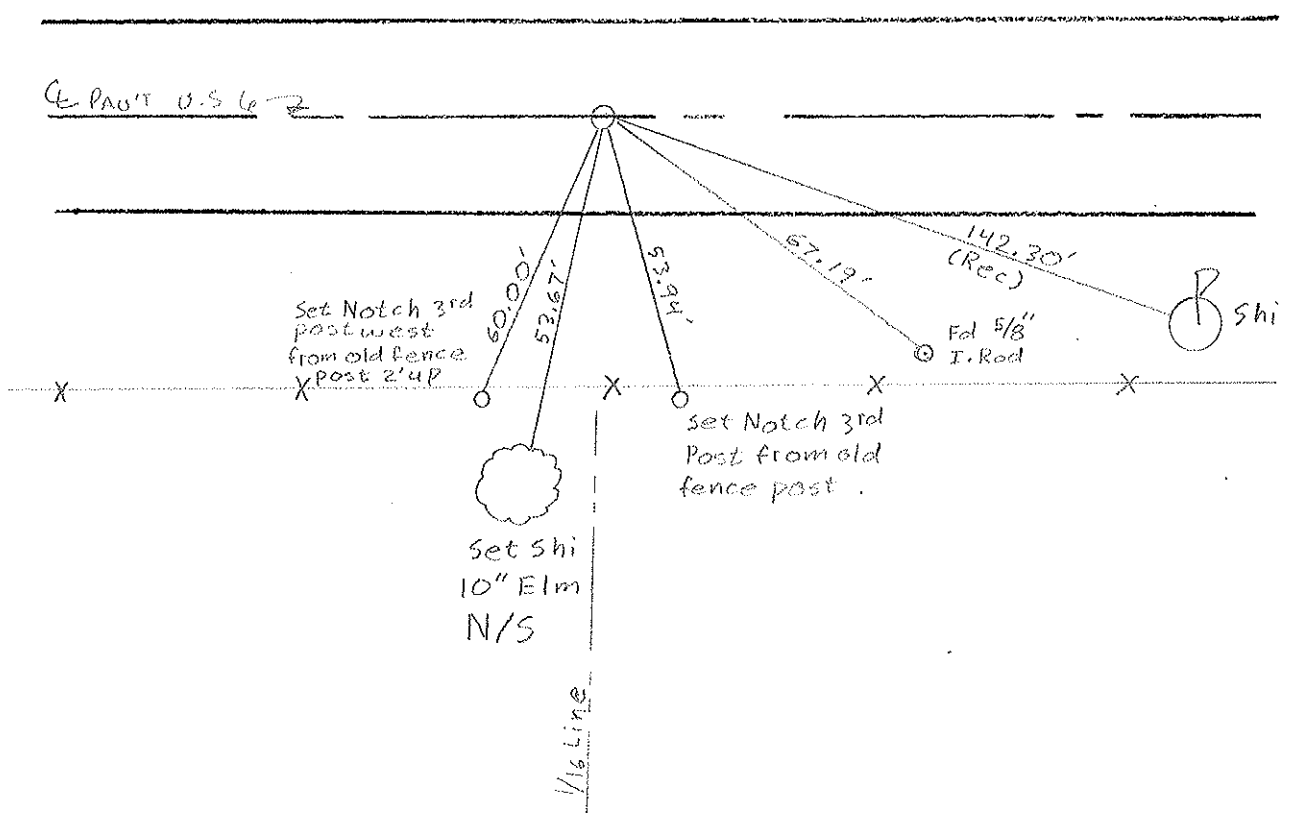
11.2' TO LT. EDGE PAVEMENT

S.L.M. 761+67



RECORD 7-7-92.
FD. LG RR. SPIKE IN CTR.
OF 24' CONC. PAVT $\frac{1}{16}$ LINE

SET MAG. NAIL & WASHER
8-26-03
MS



O.D.O.T. DISTRICT 2 SURVEY OFFICE

PERSONNEL

REFERENCE NO. 16-A

SHEET 3 OF 22

NOTES YAN DUSEN

H.C. BARNHISEL

R.C. KUSZ

BURNETT

DATE 7 July 92

WEATHER cloudy

TEMP. 68°

ROUTE US 6

COUNTY Williams

TOWNSHIP Palaski

SECTION 33

T 6 N R 3 E

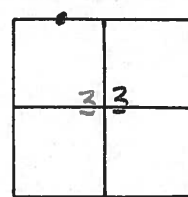
TYPE MONUMENT PK

ON SURFACE - ~~BELOW~~ YES

~~LEFT - & PAV'T. - RIGHT~~ YES

12.3 TO RT EDGE PAVEMENT

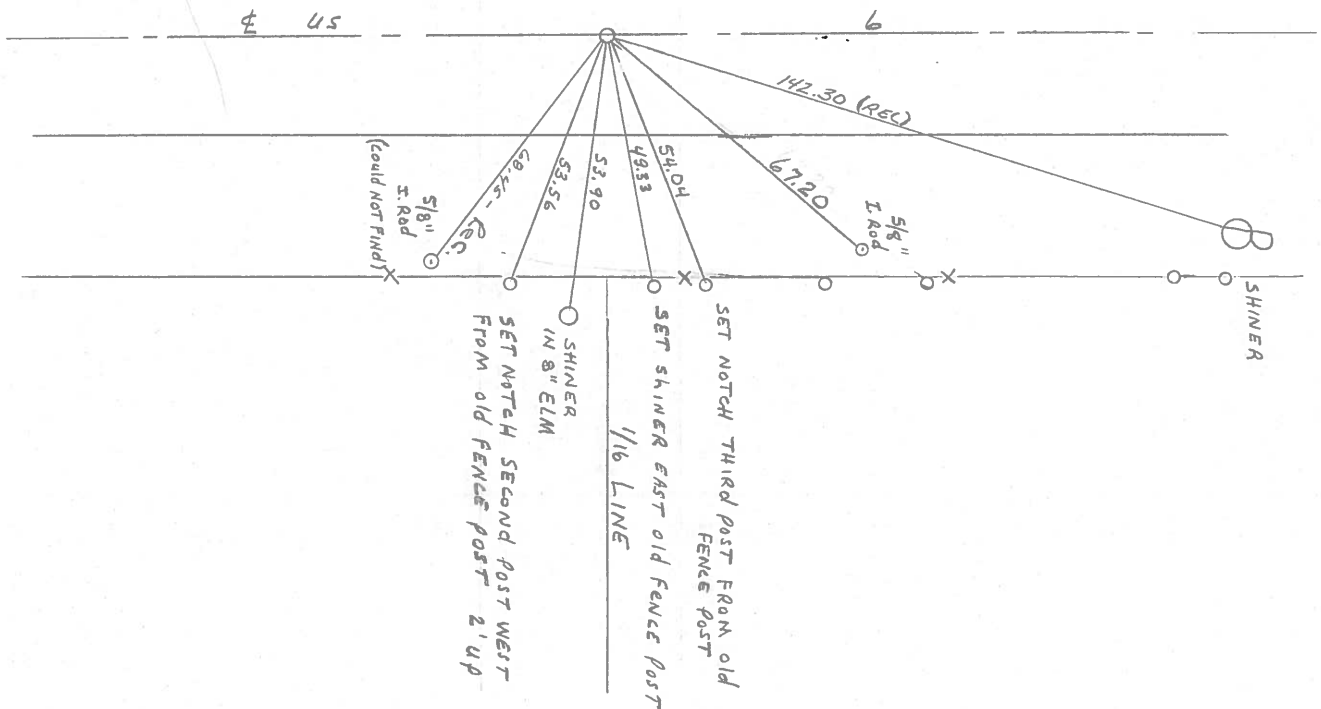
S.L.M. 761+67



RESET PK & WASHER
10-26-92
MB

Fd. RR. SPK. IN CTR. OF
24' CONG. PVT.
1/16 LINE

Fd. RR. SPK. 4" DEEP
5-30-86

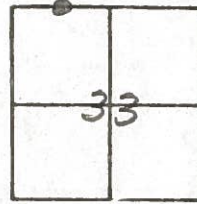


County Williams S.R. #6
Township Polaski
Section 33

Date 3 May 84
Weather Cloudy
Temp. 44°

T N, R E

Personnel L. Stone
P. Neuser
R. Michalak
D. Curtis

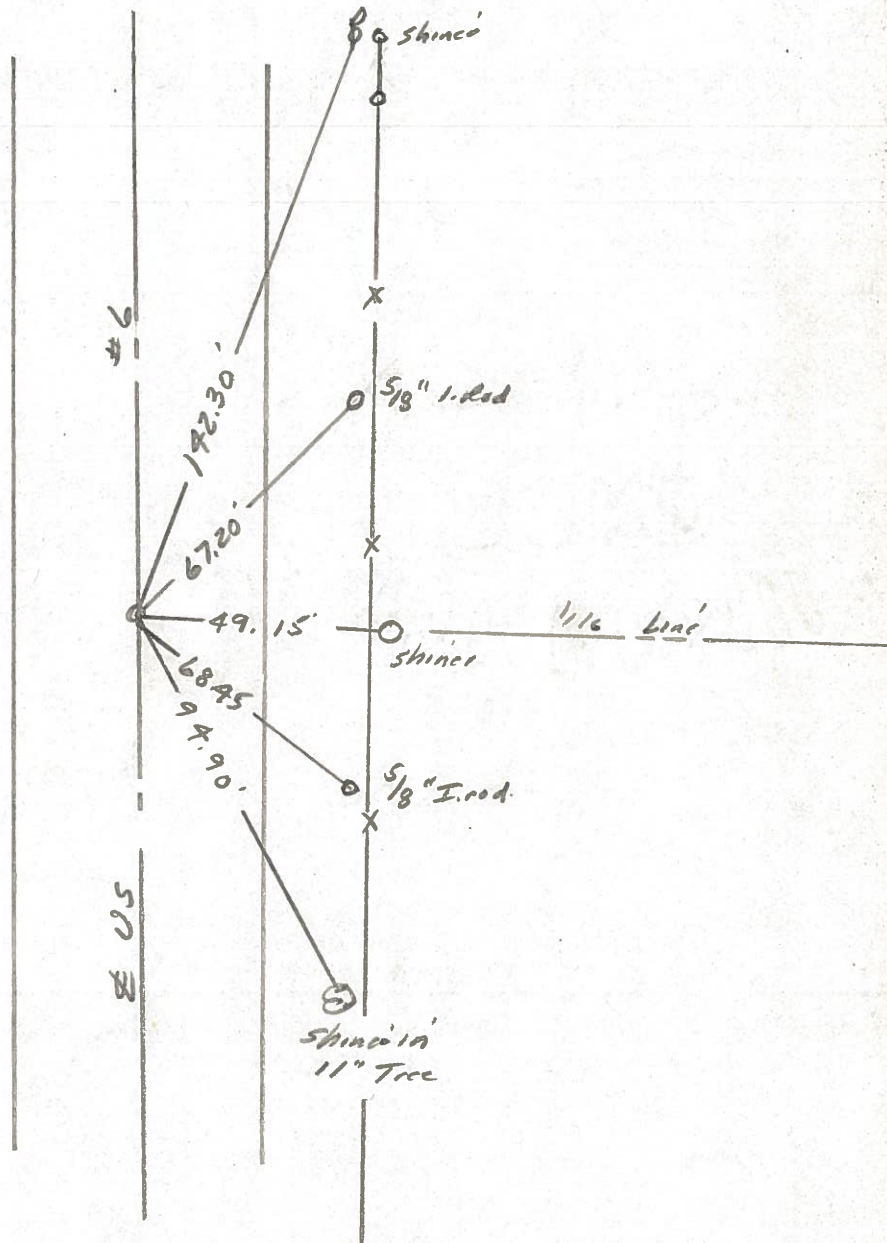


760+80

REF. NO. 16-A



Fd. RR. Spt. in ctr. of
24' Cor. put,
1/16 Line
Fd. R.R. Spt. 4" Deep -
5-30-86



PERSONNEL TITLE PERSONNEL TITLE

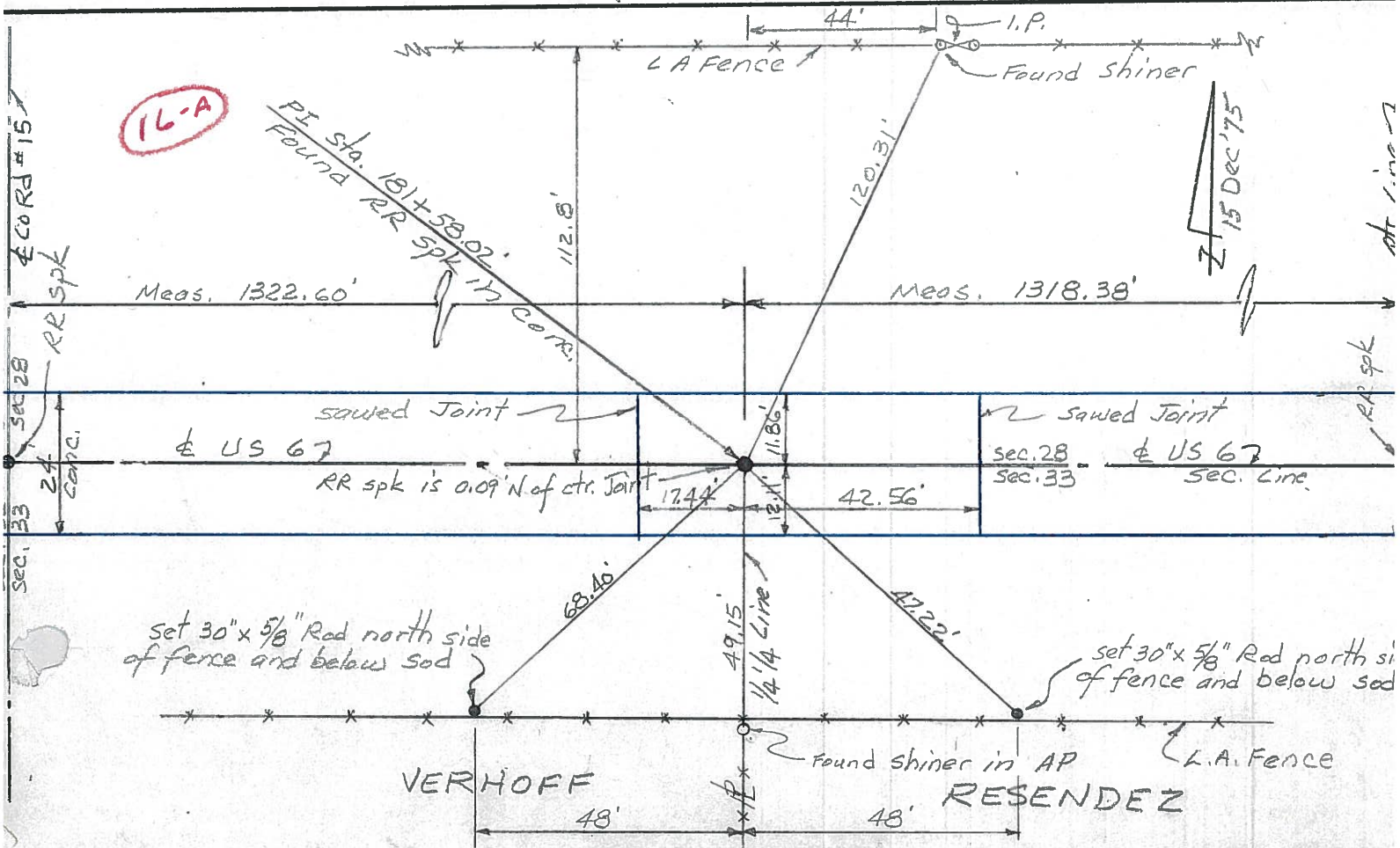
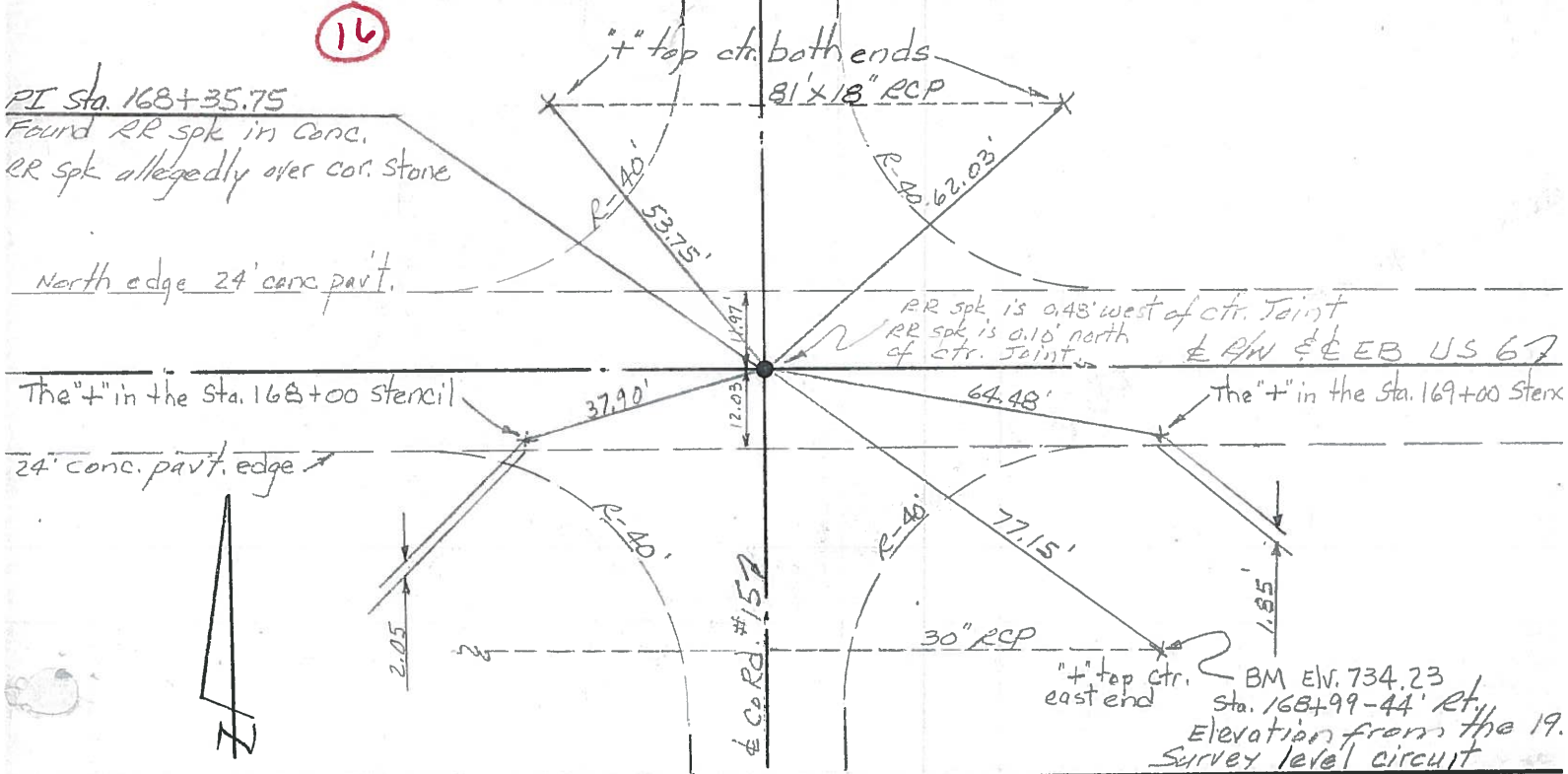
Red Beach
W. Knape

COUNTY Williams DATE 8 Aug 75

S. R. US 6 WEATHER

SEC. 29 | 28
32 | 33 Pulaski Twp TEMP

DESCRIPTION CONTROL POINTS JOB NO.



PERSONNEL TITLE PERSONNEL TITLE

Hoover Mohler

COUNTY Williams

DATE 12-7-60

Ruffner

S. R. 6

WEATHER Pky Cloudy

Pelventhal

SEC.

TEMP. 32

Young

DESCRIPTION

LEFT

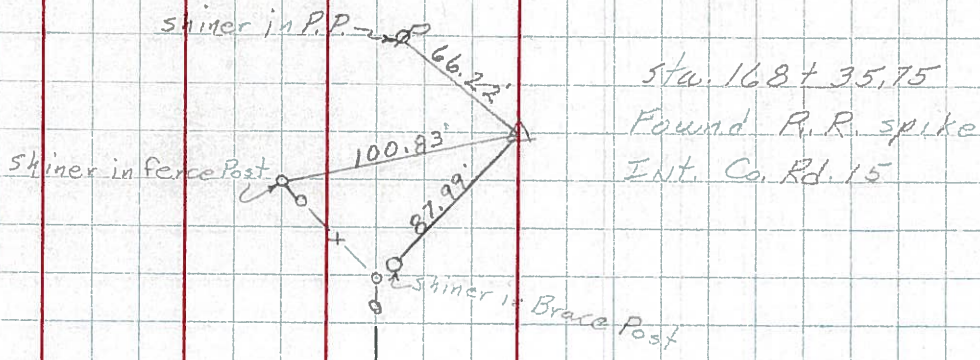
CENTER LINE

RIGHT

JOB NO.

113.

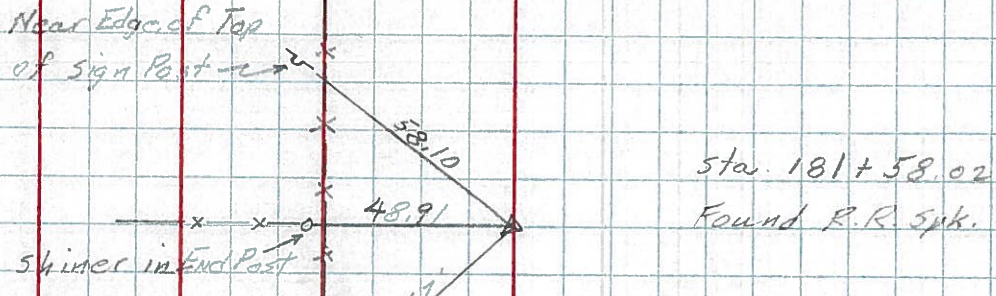
116



Sta. 168+35.75
Found R.R. spike
Int. Co. Rd. 15

114.

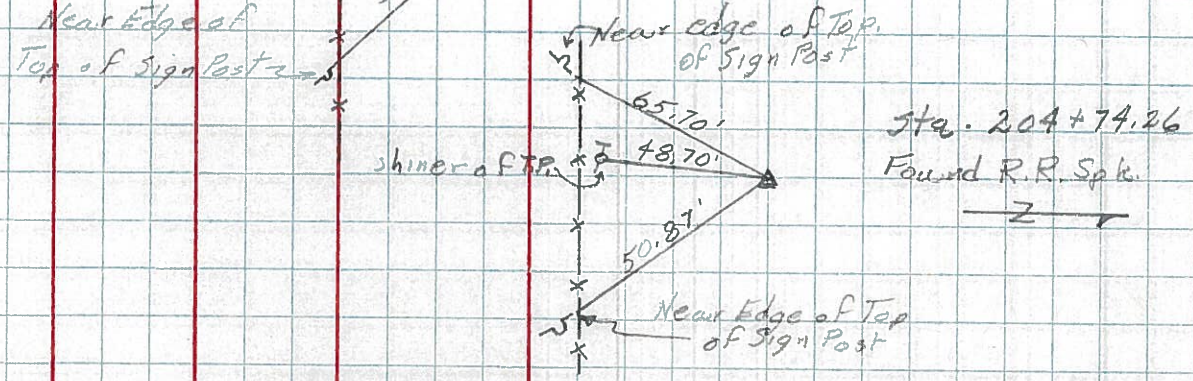
116-A



Sta. 181+58.02
Found R.R. Spk.

116.

116-C



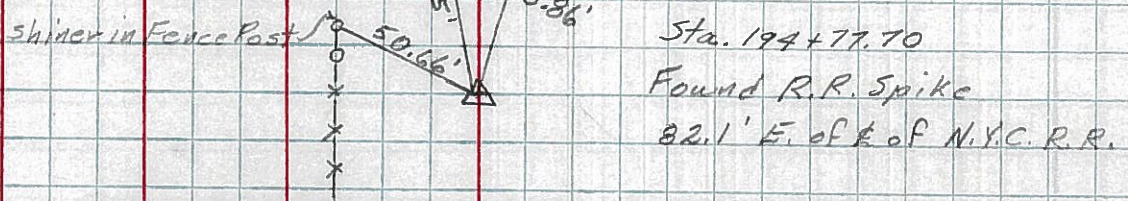
Sta. 204+74.26
Found R.R. Spk.

N.E. Bolt on Base of R.R. Flasher

S.E. Bolt on R.R. Flasher Base

115.

116-B



Sta. 194+77.70
Found R.R. Spike
82.1' E. of E. of N.Y.C. R.R.

PERSONNEL TITLE PERSONNEL TITLE

Louys

COUNTY Wi.

DATE 2-7-58

S. R. 6

WEATHER

SEC Relocation over Rt. #384 TEMP. 20°

DESCRIPTION

Witnesses To Control Points

JOB NO.

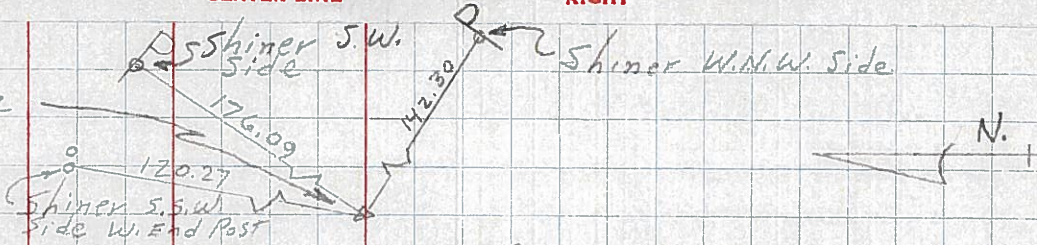
LEFT

CENTER LINE

RIGHT

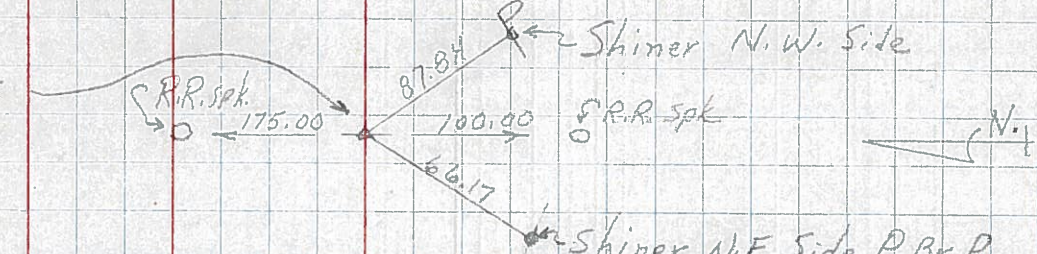
114 R/w only

P.I. - sta. 181 + 58.02
(Point is 0.10 LT. OF STR. LINE BETWEEN 1/2 MI. POINTS)
 $\Delta = 0^\circ - 01' RT.$
(SHI. OVER STONE)



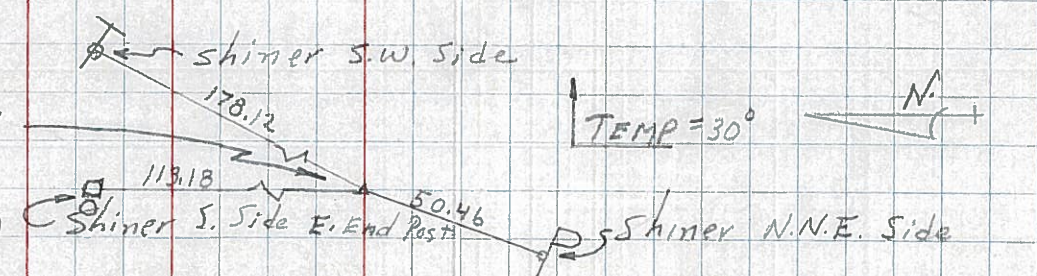
113

P.I. - sta. 168 + 35.75
 $\Delta = 0^\circ - 01' RT.$
(TACKED HUB OVER STONE)



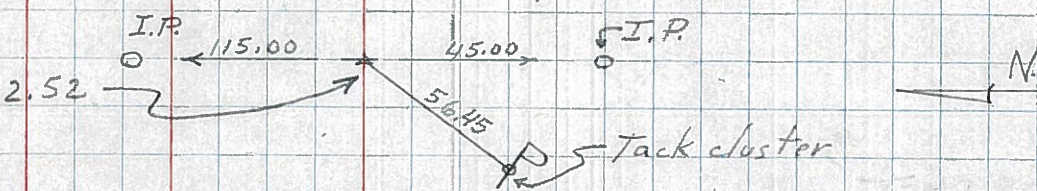
112 R/w only

P.I. - sta. 155 + 04.44
 $\Delta = 0^\circ - 00' - 30'' LT.$
(Point is 0.25' RT. OF & CONST. ON A STR. LINE)
(TACKED HUB OVER STONE)



111

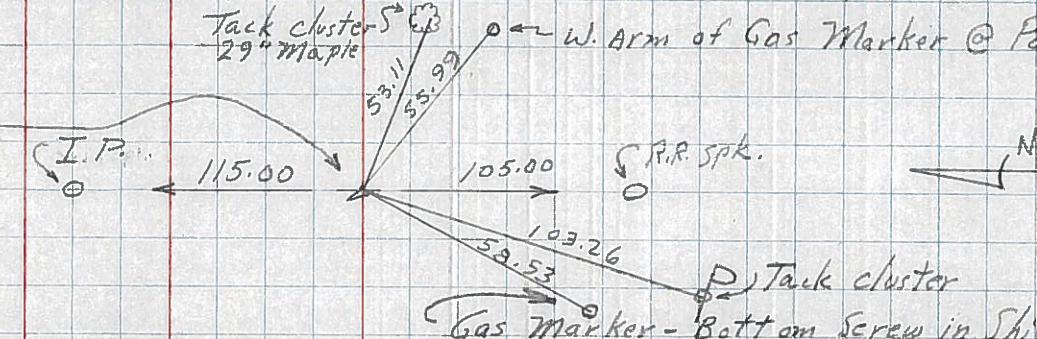
P.I. - sta. 141 + 72.52
 $\Delta = 0^\circ - 02' LT.$



110 - Sta. 128 + 52.28 INT. US 6 & U.S. 127 (R.R. SPK. EST.) REFER - N4110A - SHEET OPP. BUT IN FIELD BOOK

109 SAME AS No. 60 IN FIELD-BOOK.

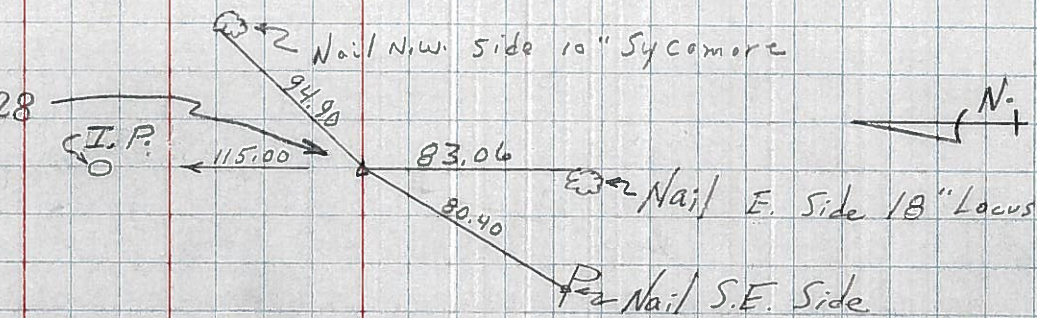
P.I. - sta. 115 + 11.57
 $\Delta = 0^\circ - 52.5' RT.$



114

108

P.I. - sta. 88 + 66.28
 $\Delta = 0^\circ - 10' LT.$



113-A