

O.D.O.T. DISTRICT 2 SURVEY OFFICE (USE ONLY)

PERSONNEL

REFERENCE NO. 16 B

SHEET 3 OF 19

NOTES BARNHEISEL

DATE 4/25/02

ROUTE US 6

H.C. CANTERBURY

WEATHER CLEAR/WINDY

COUNTY WILLIAMS

R.C. MOSEER

TEMP. 45°

TOWNSHIP PULASKI

SECTION 33

DWG BY NIESE PID 95792

T 6 N R 3 E

TYPE MONUMENT P.K./WASHER

ON SURFACE - ~~BELOW~~ ON

OFFSET 0.4' LT : ~~RT~~

11.6' TO LT EDGE PAVEMENT

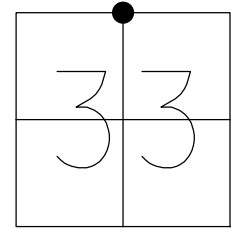
STATION: 774+39.16

HORIZ.DATUM: NAD83(2011)

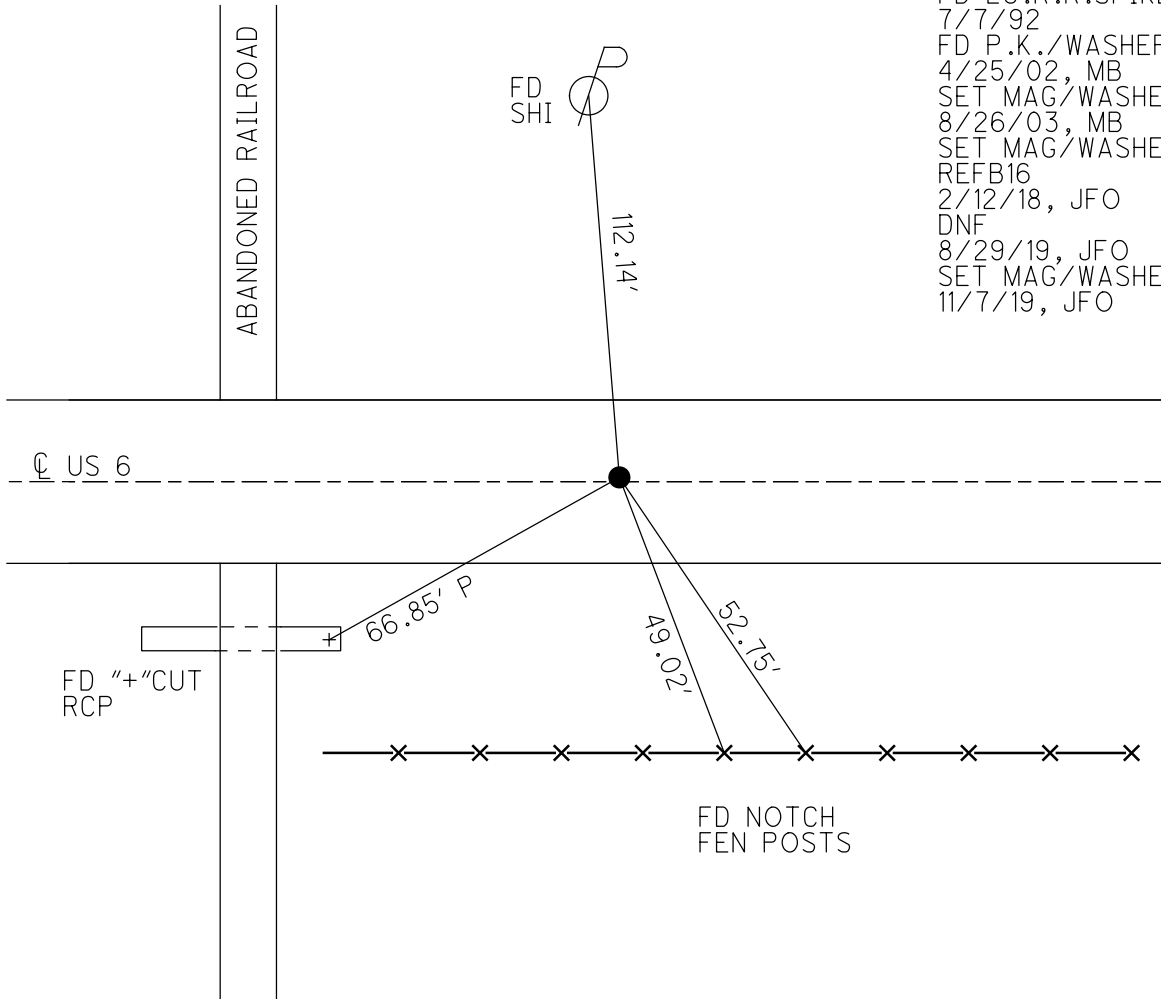
GEOID: 2012A

GRID: NORTHING: 653162.450

EASTING: 1412952.811



RECORD:
 FD LG.R.R.SPIKE
 7/7/92
 FD P.K./WASHER
 4/25/02, MB
 SET MAG/WASHER
 8/26/03, MB
 SET MAG/WASHER
 REFB16
 2/12/18, JFO
 DNF
 8/29/19, JFO
 SET MAG/WASHER
 11/7/19, JFO



O.D.O.T. DISTRICT 2 SURVEY OFFICE

PERSONNEL

REFERENCE NO. 16-B

SHEET 3 OF 20

NOTES Barnhisel

H.C. Centerbury

R.C. Moser

DATE 4-25-02

WEATHER clear/windy

TEMP. +45°

ROUTE U.S. 60

COUNTY WILLIAMS

TOWNSHIP PULASKI

SECTION 33

T6 N R3 E

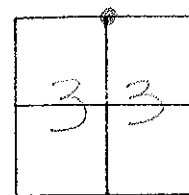
TYPE MONUMENT PK & Washer

ON SURFACE - ~~BELOW~~ on surface

LEFT- ~~PAV'T.~~ - RIGHT 0.4' LT

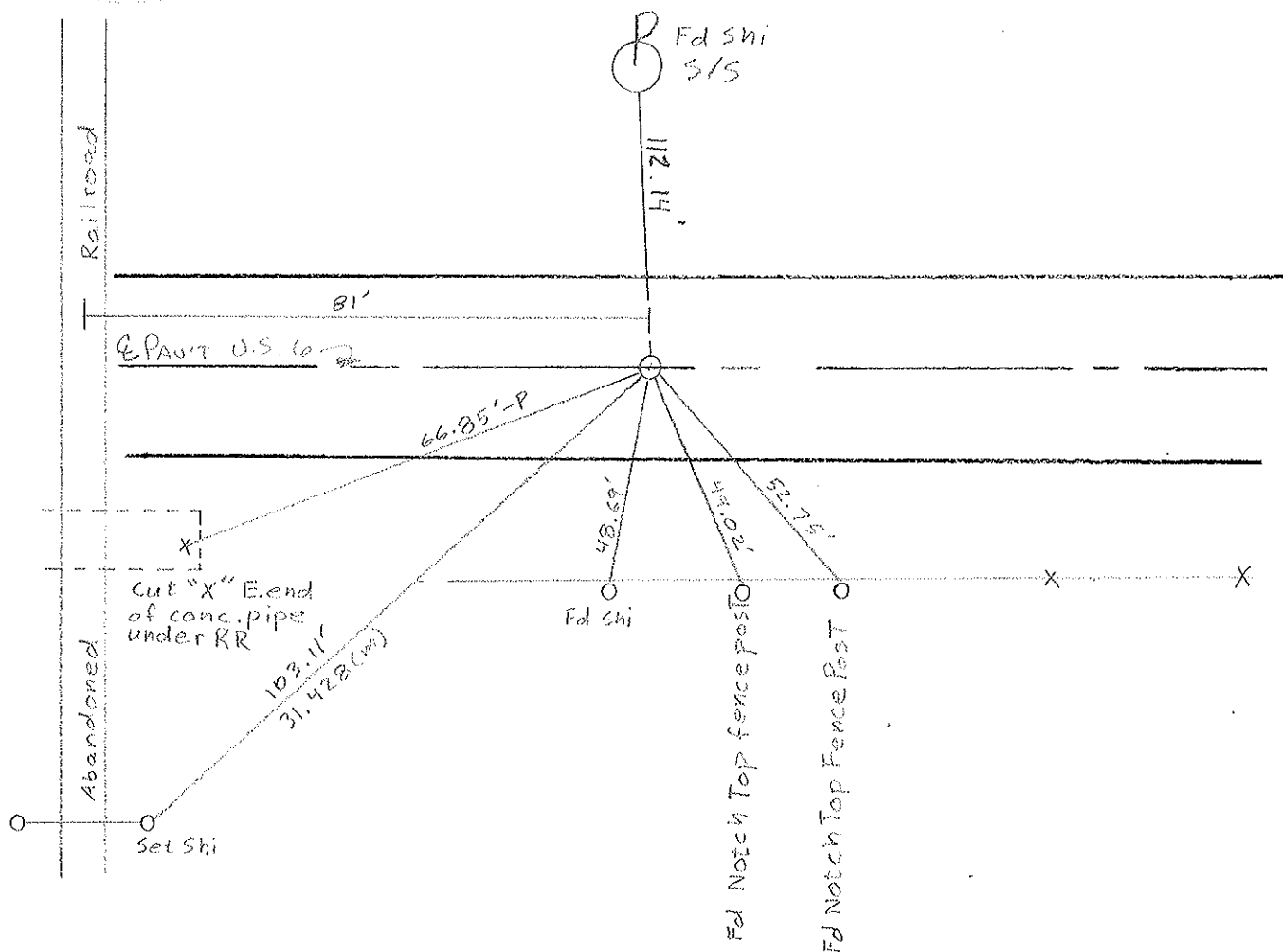
11.6' TO LT. EDGE PAVEMENT

S.L.M. 774+87



RECORD: 7-7-92
 FO. LG. RR. SPIKE IN CIR
 OF CONC. 24" CONC. PAVEMENT
 N 1/4 COR. SEC. 33

SET MAG NAIL & WASHER
 8-26-03
 KR



O.D.O.T. DISTRICT 2 SURVEY OFFICE

PERSONNEL

REFERENCE NO. 16 B

SHEET 4 OF 22

NOTES VAN DUSEN

H.C. BARNHISEL

R.C. KUSZ

BURNETT

DATE 7 July 92

WEATHER cloudy

TEMP. 69°

ROUTE US 6

COUNTY Williams

TOWNSHIP Pulaski

SECTION 33

T 6 N R 3 E

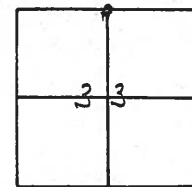
TYPE MONUMENT PK & WASHER

ON SURFACE - BELOW YES

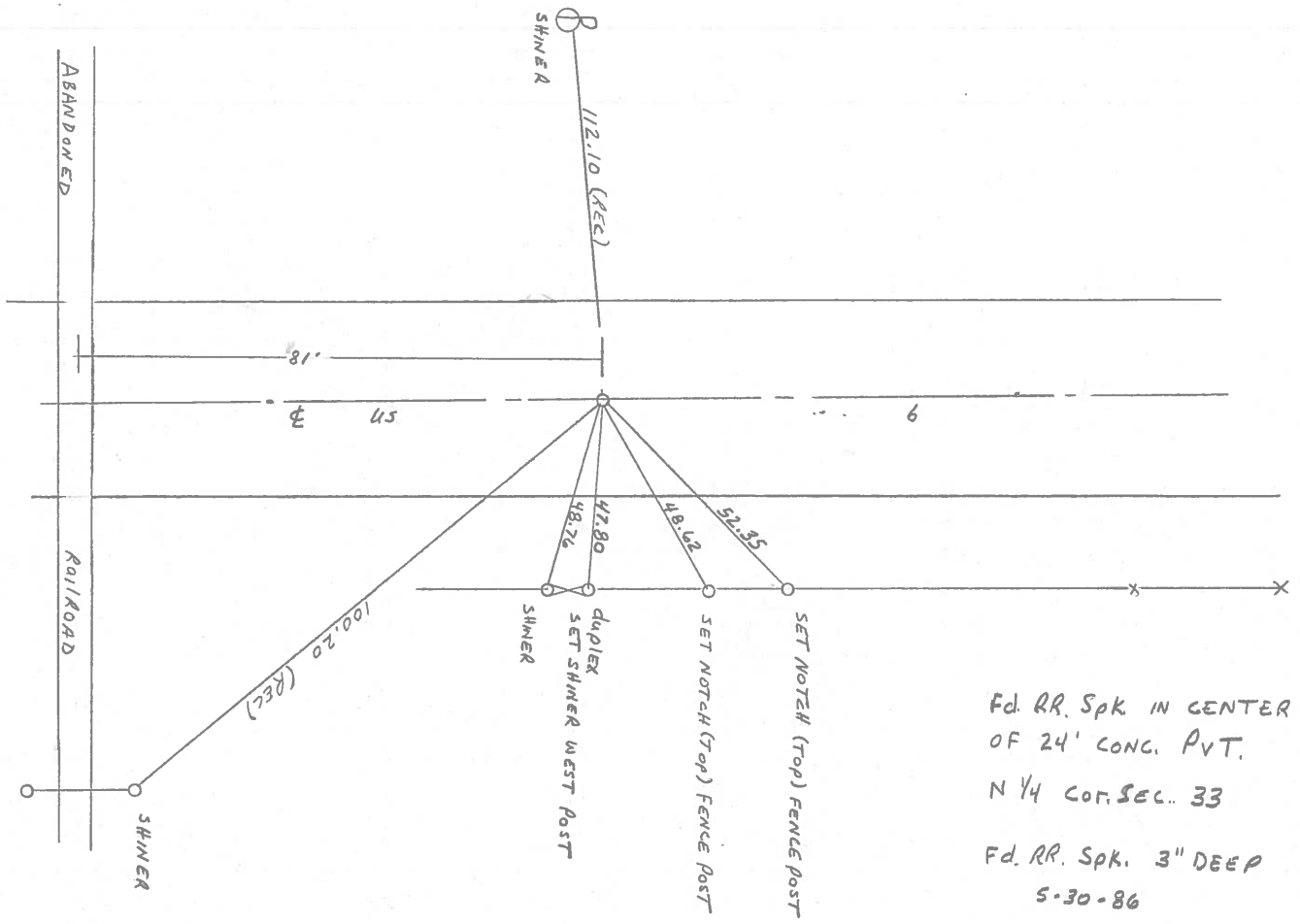
~~LEFT - & PAV'T. - RIGHT~~ YES

11.9 TO RT EDGE PAVEMENT

S.L.M. 774 + 87



RESET PK & WASHER
 10-26-92
 MB



Fd. RR. Spk IN CENTER
 OF 24' CONC. PVT.
 N 1/4 COR. SEC. 33
 Fd. RR. Spk. 3" DEEP
 5-30-86

County Williams S.R. #6

Date 3 May 84

Township Poleski

Weather cloudy

Section 33

Temp. 45°

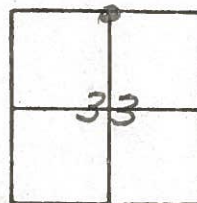
T N, R E

Personnel L. Stone

P. Newser

R. Michalak

D. Curtis

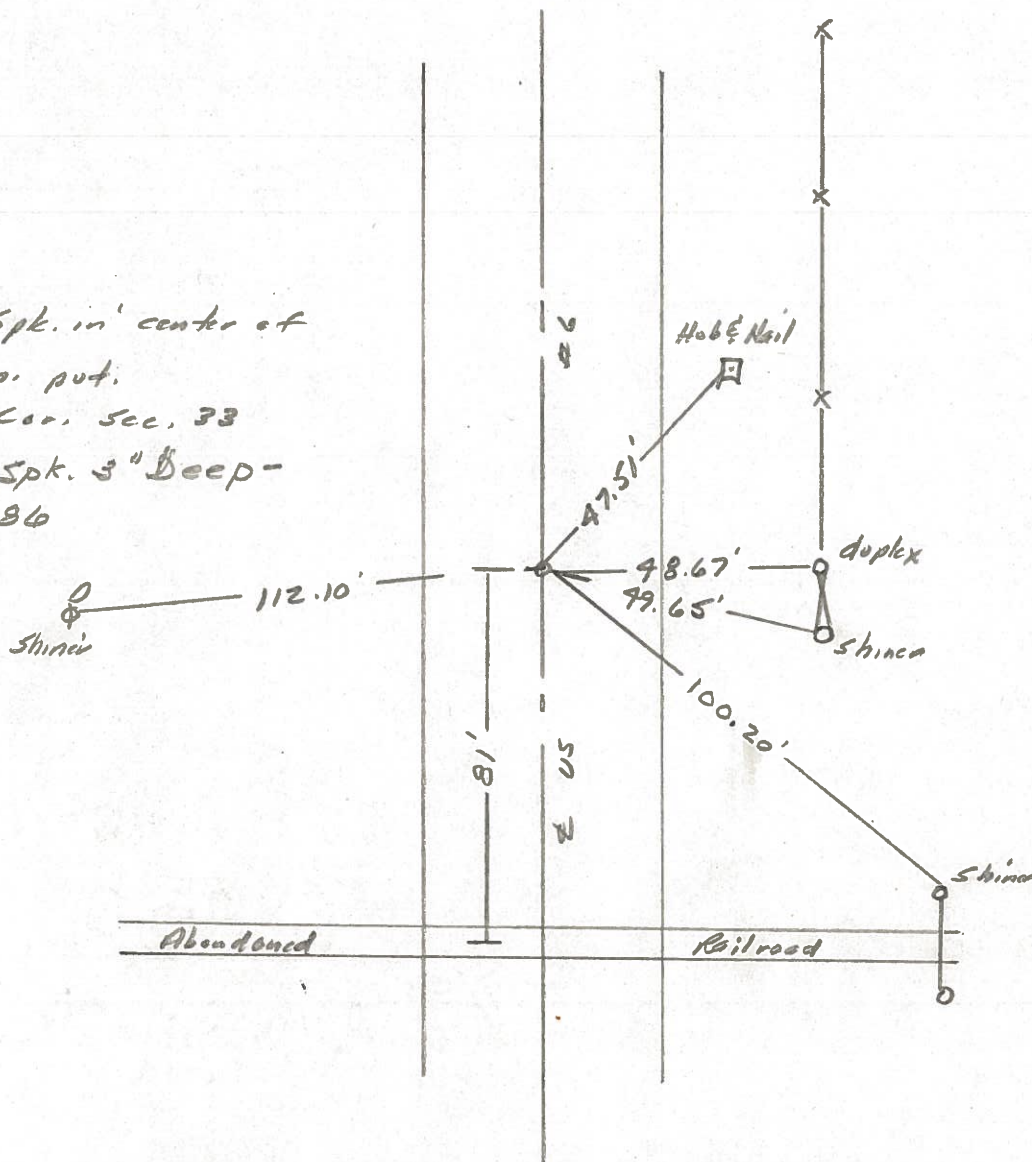


773+97

REF. NO. 16-B



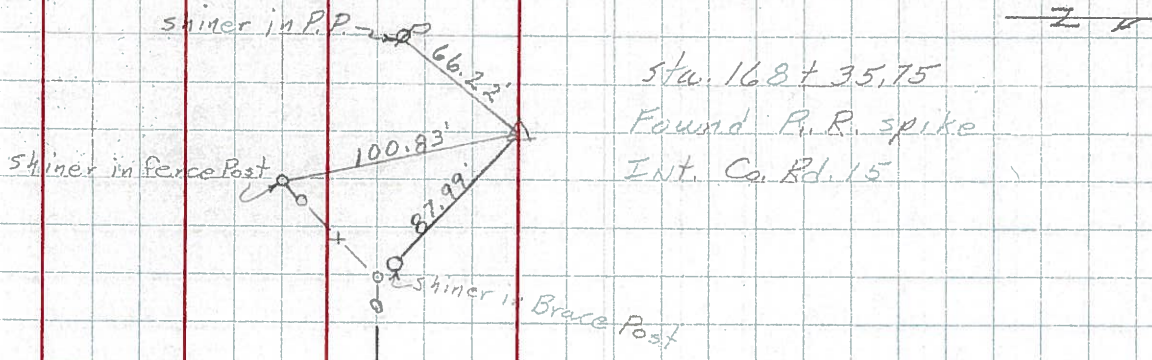
Ca. RR Spk. in center of
24' Cor. put.
N. 1/4 Cor. Sec. 33
Fd. RR. Spk. 3" Deep -
5-30-86



PERSONNEL	TITLE	PERSONNEL	TITLE	COUNTY	DATE	WEATHER	TEMP.
Hoover	Mohler			Williams	12-7-60	Partly Cloudy	32
Ruffer				S. R. 6			
Pelventhal				SEC.			
Young							

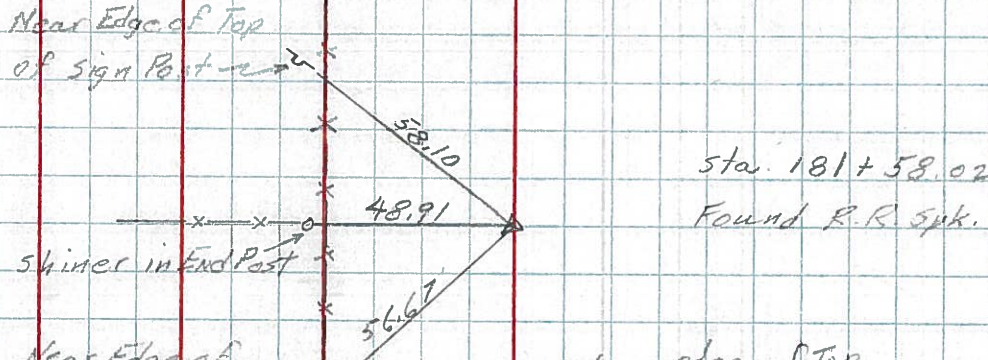
DESCRIPTION _____ LEFT _____ CENTER LINE _____ RIGHT _____ JOB NO. _____

113.
(116)



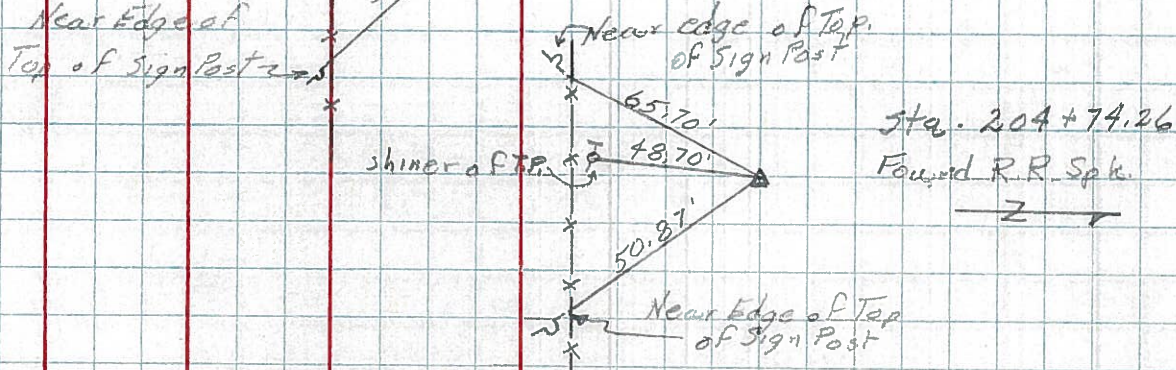
Sta. 168+35.75
Found P.R. spike
Int. Co. Rd. 15

114.
(116-A)

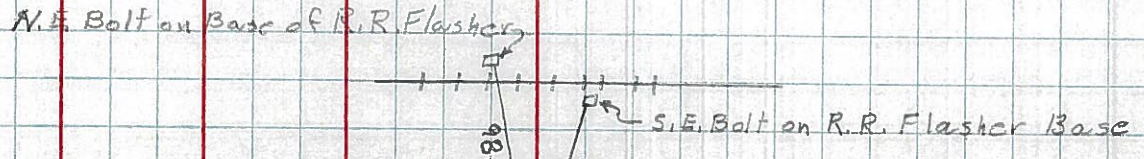


Sta. 181+58.02
Found R.R. Spk.

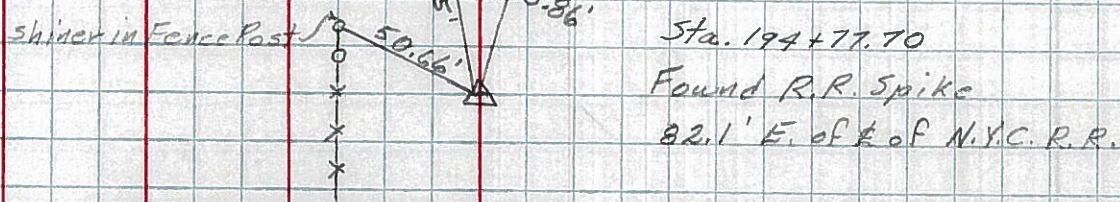
116.
(116-C)



Sta. 204+74.26
Found R.R. Spk.



115.
(116-B)



Sta. 194+77.70
Found R.R. Spike
82.1' E. of E. of N.Y.C. R.R.

PERSONNEL TITLE PERSONNEL TITLE

Louys

COUNTY Wi.

DATE 2-24-58

S. R. 6

WEATHER

SEC Relocation over Rt. #384

TEMP. 45°

DESCRIPTION

Witnesses to control Points

JOB NO.

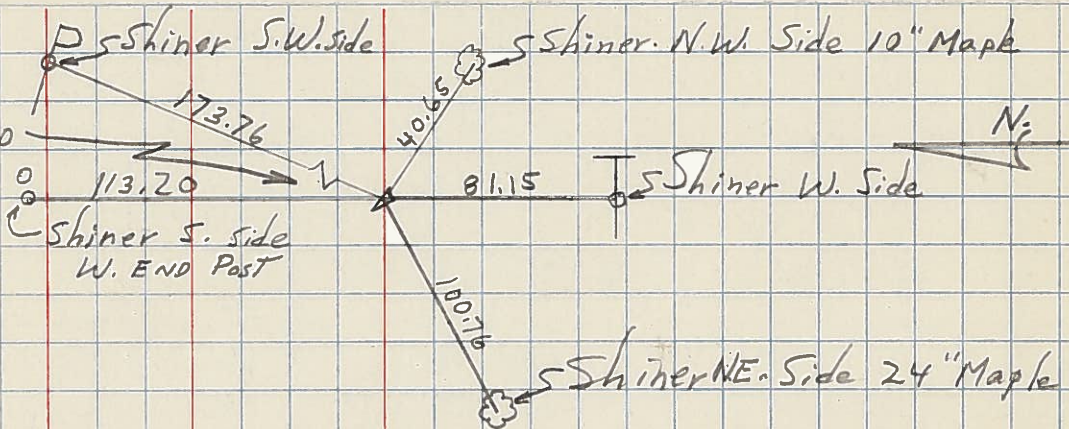
LEFT

CENTER LINE

RIGHT

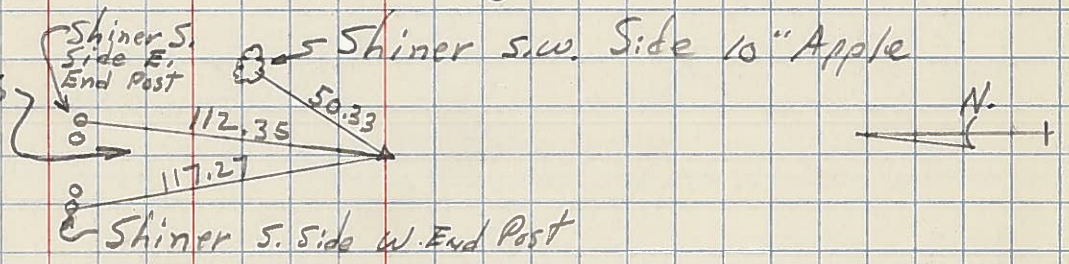
17-B
119

P.I. - sta. 247+80.60
 $\Delta = 0^\circ - 00'$
(EST. R.R. SPK.)



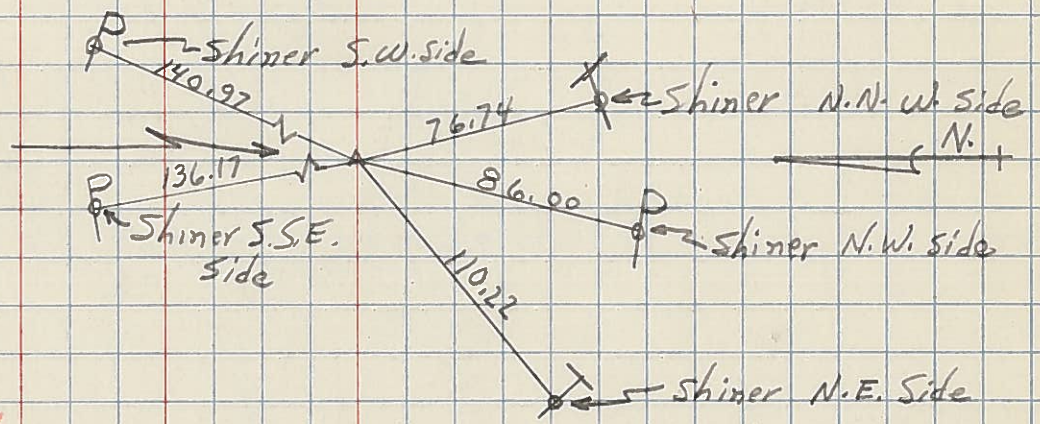
118
17-A R/W only

P.I. - sta. 234+64.25
 $\Delta = 0^\circ - 02'$ Rt.
(Point is 0.20' Lt. of a str. line between 1/2 Mi. Pkts.)
(Fd. Stone (R.R. SPK.))



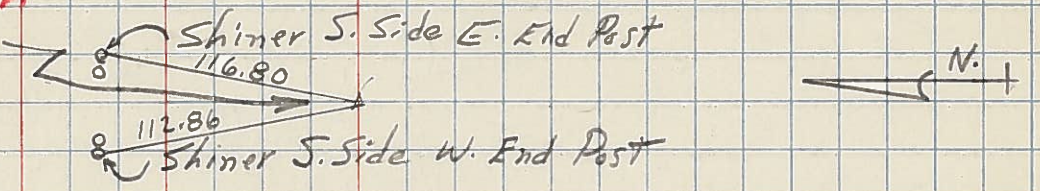
117
17

P.I. - sta 221+28.90
 $\Delta = 0^\circ - 08'$ Rt.
(EST. R.R. SPK.)



116
16-C USE For Constr

P.I. - sta. 204+74.26
 $\Delta = 0^\circ - 12'$ Rt.
(Point is 2.48' Lt. of a str. line between 1/2 Mi. Pkts.)
(Fd. Stone (R.R. SPK.))



115
16-B

P.I. - sta. 194+77.70
 $\Delta = 0^\circ - 15'$ Lt.
(R.R. SPK.)

