

O.D.O.T. DISTRICT 2 SURVEY OFFICE (USE ONLY)

PERSONNEL

REFERENCE NO. 16 C

SHEET 4 OF 19

NOTES AUBLE DATE 9/9/19  
 H.C. LEU WEATHER SUNNY  
 R.C. NASON TEMP. 65°  
O'DONNELL, NIESE

ROUTE US 6  
 COUNTY WILLIAMS  
 TOWNSHIP PULASKI  
 SECTION 33

DWG BY NIESE PID 95792

T 6 N R 3 E

TYPE MONUMENT R.R.SPIKE

~~ON SURFACE~~ - BELOW 4 1/2"

OFFSET ☐ PAVEMENT ON LT : RT

11.3' TO LT EDGE PAVEMENT

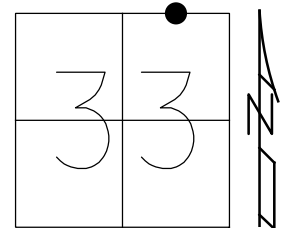
STATION: 784+37.21

HORIZ.DATUM: NAD83(2011)

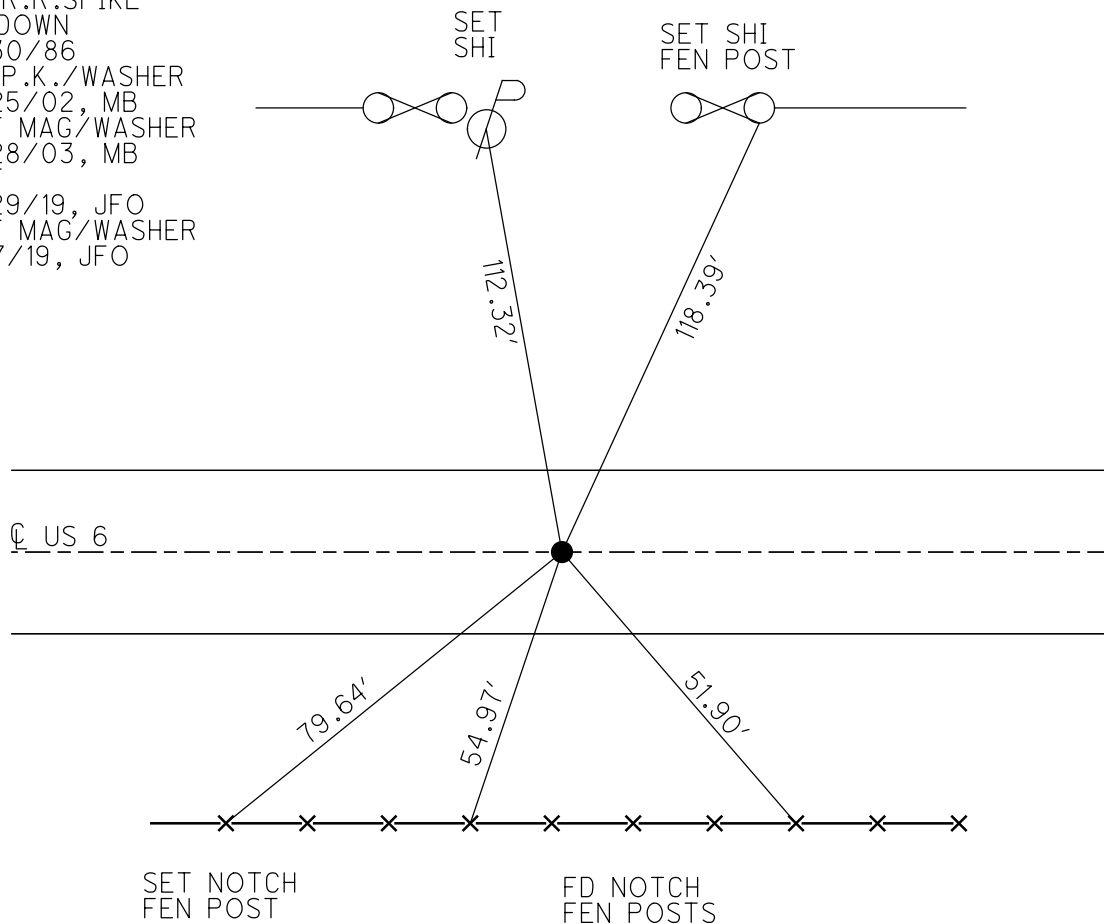
GEOID: 2012A

GRID: NORTHING: 653145.919

EASTING: 1413950.721



RECORD:  
 FD R.R.SPIKE  
 4" DOWN  
 5/30/86  
 FD P.K./WASHER  
 4/25/02, MB  
 SET MAG/WASHER  
 8/28/03, MB  
 DNF  
 8/29/19, JFO  
 SET MAG/WASHER  
 11/7/19, JFO



# O.D.O.T. DISTRICT 2 SURVEY OFFICE

PERSONNEL

REFERENCE NO. 16-C

SHEET 4 OF 20

NOTES Barnhisel

H.C. Cantebury

R.C. Moser

DATE 4-25-02

WEATHER Clear / windy

TEMP. +45°

ROUTE U.S. 60

COUNTY WILLIAMS

TOWNSHIP POLASKI

SECTION 33

TOWN R 3 E

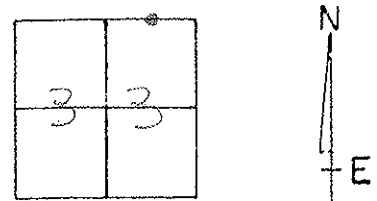
TYPE MONUMENT P.K. + Washer

ON SURFACE - BELOW on surface

LEFT - PAV'T. - RIGHT 0.5' LT

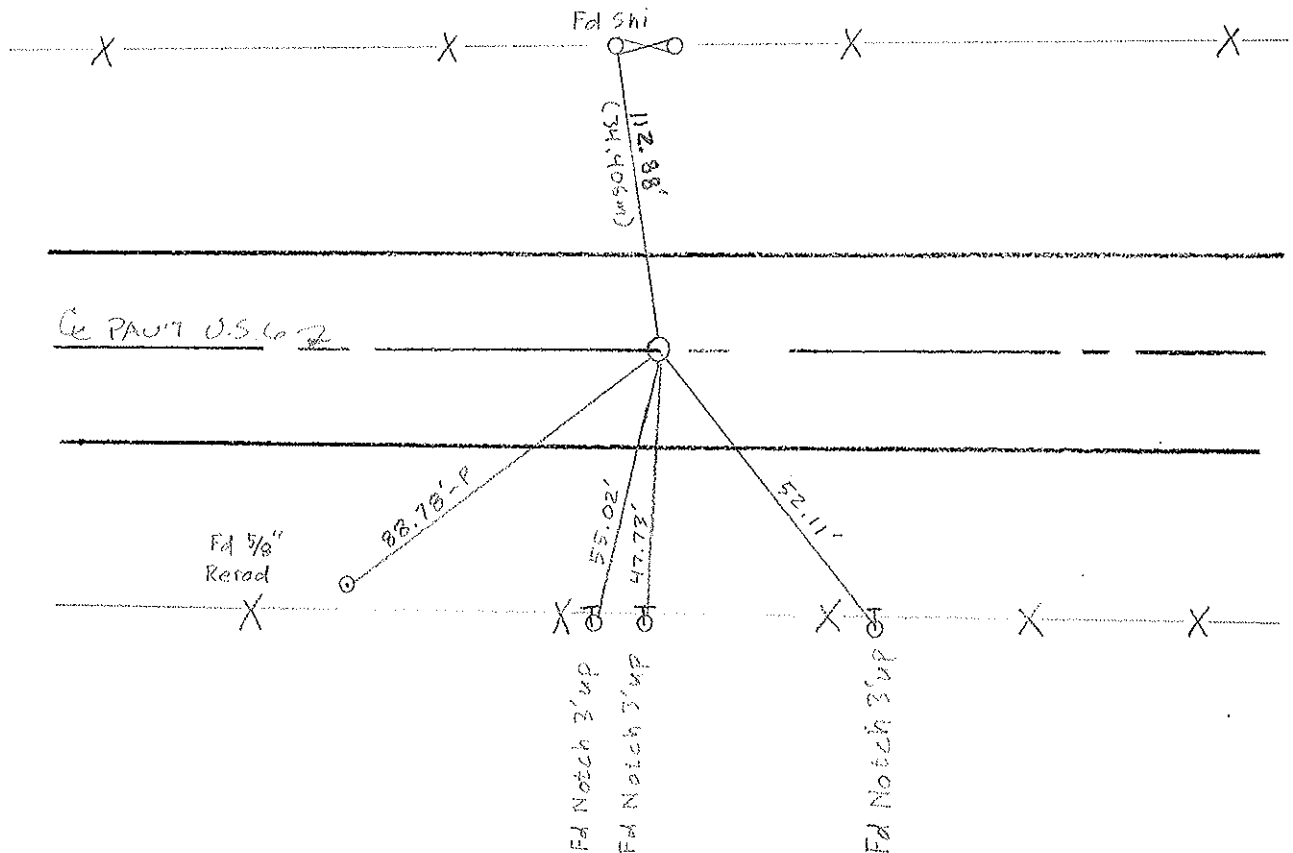
11.3 TO LT EDGE PAVEMENT

S.L.M. 784+84



RECORD: 5:30:00  
FO. P.P. SPIKE 4" DOWN

SET MAG NAIL & WASHER  
8-28-03  
MS



# O.D.O.T. DISTRICT 2 SURVEY OFFICE

PERSONNEL

REFERENCE NO. 164

SHEET 5 OF 22

NOTES VAN DUSEN

H.C. BARNHISEL

R.C. KUSZ

BURNETT

DATE 7 July 92

WEATHER cloudy

TEMP. 68°

ROUTE US 6

COUNTY Williams

TOWNSHIP Pulaski

SECTION 33

T 6 N R 3 E

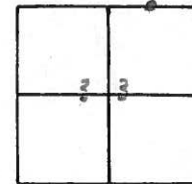
TYPE MONUMENT PK & WASHER

ON SURFACE - BELOW YES

~~LEFT~~ - PAV'T. - RIGHT YES

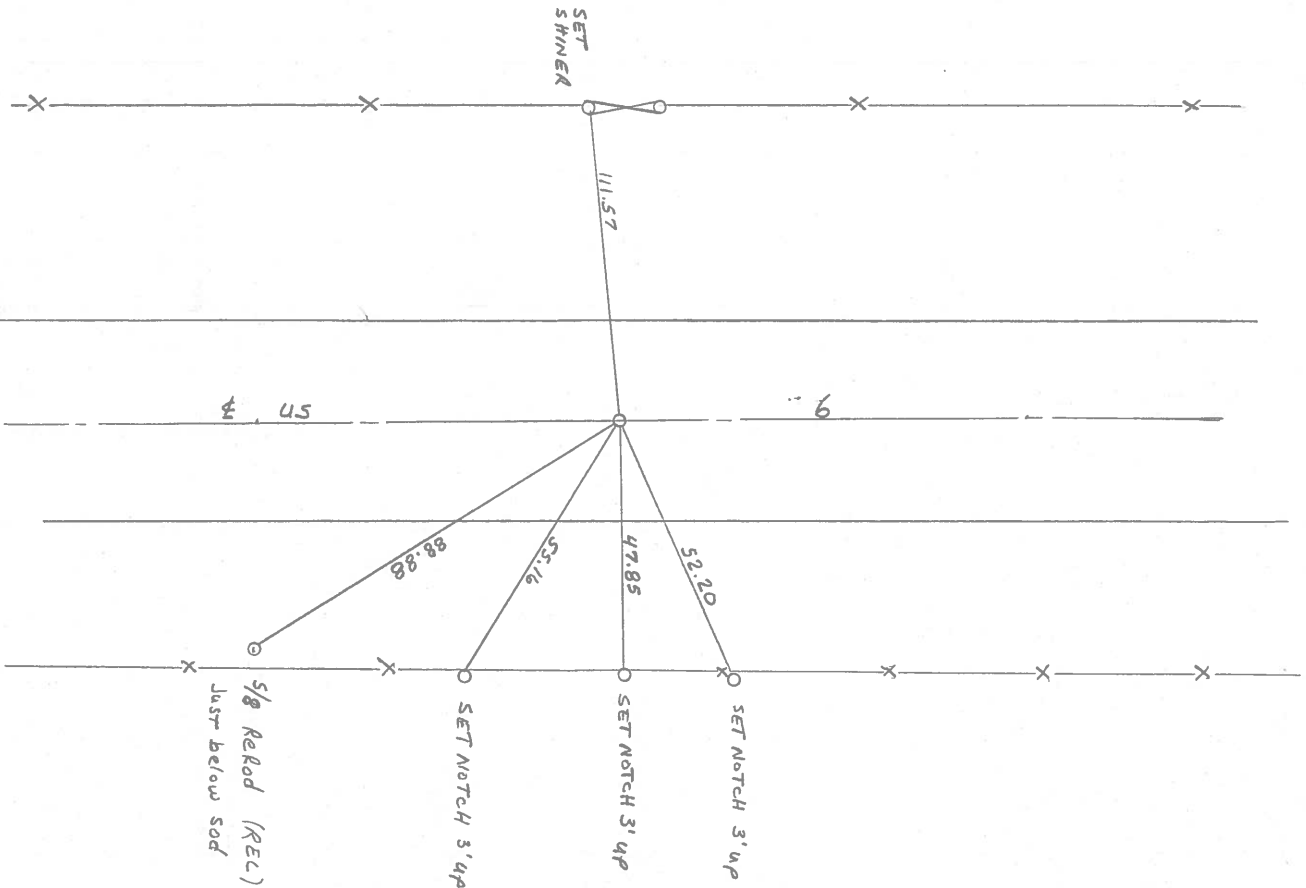
12.3 TO RT EDGE PAVEMENT

S.L.M. 784+84



Fd. R.R. Spk. 4" DEEP  
5-30-86

SET PK & WASHER  
10-26-92  
MB



County Williams S.R. #6

Date 4 May 84

Township Pulaski

Weather Cloudy

Section 33

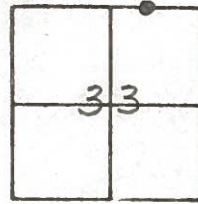
Temp. 45°

T N, R E

Personnel D. Curtis

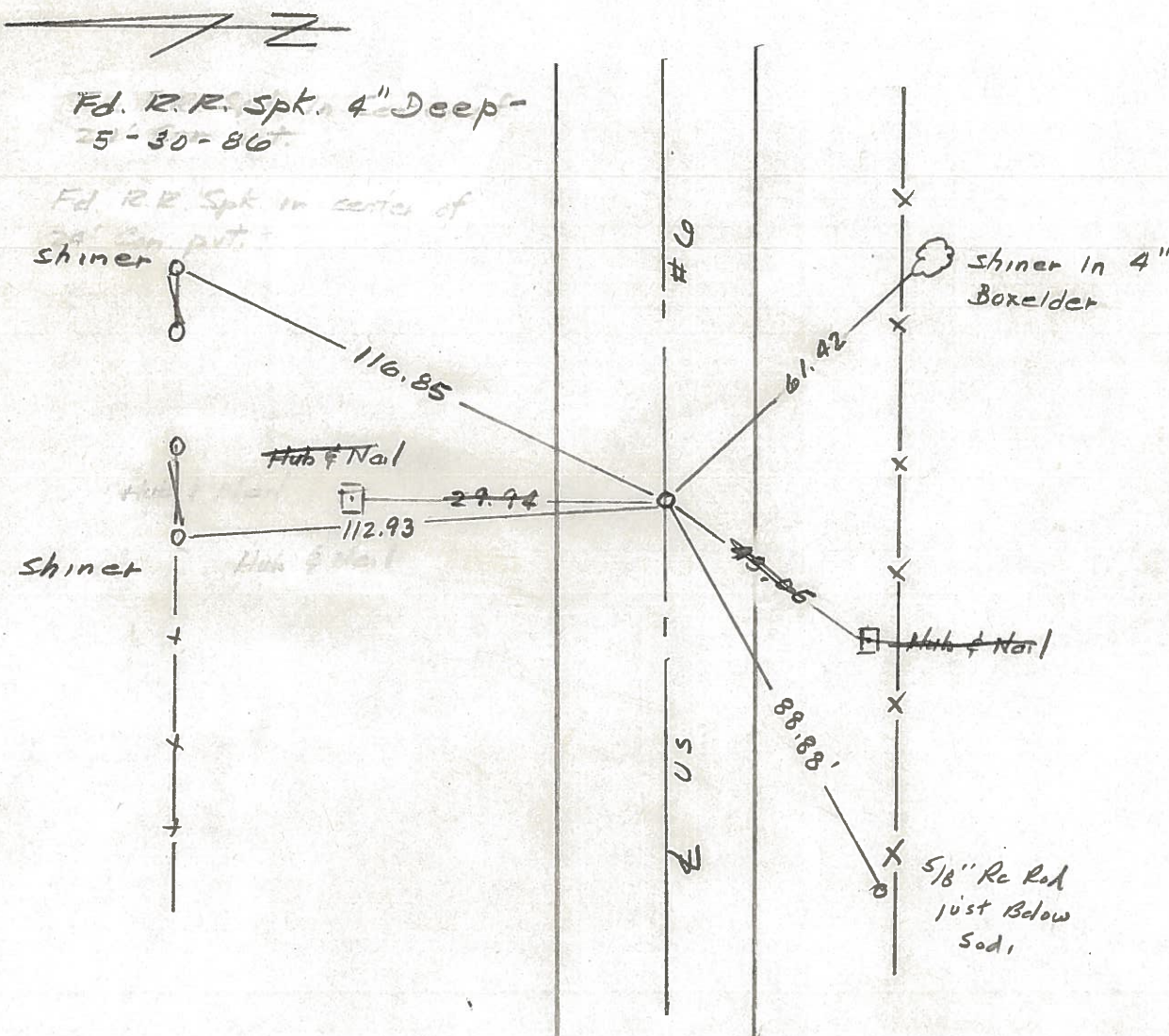
P. Neuser

R. Michalak



783+95

REF. No. 16-C





PERSONNEL	TITLE	PERSONNEL	TITLE
Hoover	Mohler		
Ruffner			
Pelventhal			
Young			

COUNTY Williams

DATE 12-7-60

S. R. 6

WEATHER Pky Cloudy

SEC.

TEMP. 32

DESCRIPTION

LEFT

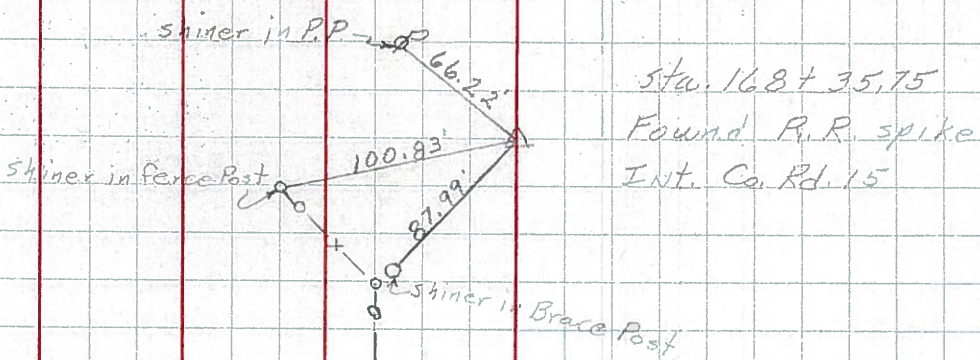
CENTER LINE

RIGHT

JOB NO.

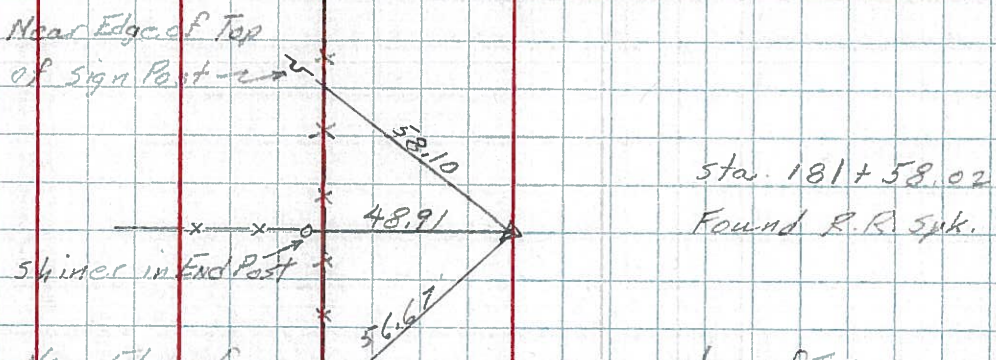
113.

(116)



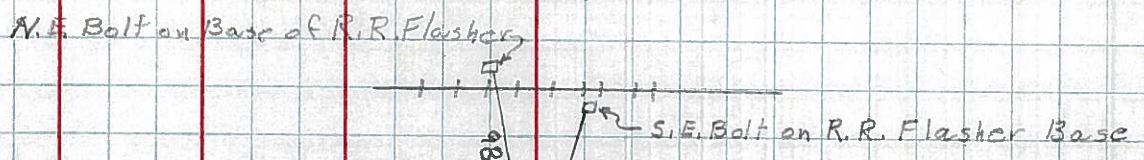
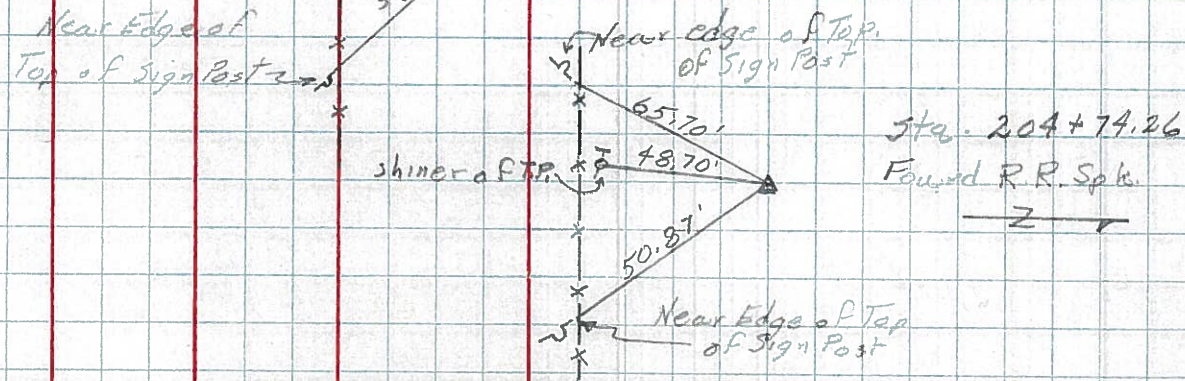
114.

(116-A)



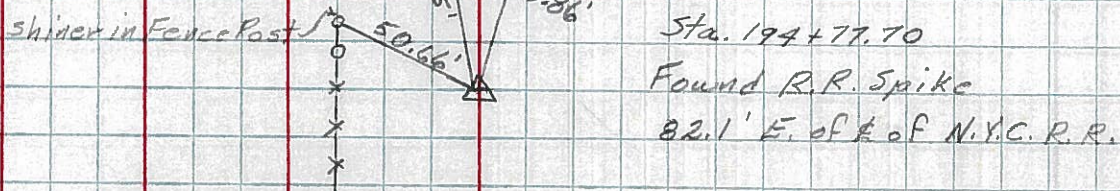
116.

(116-C)



115.

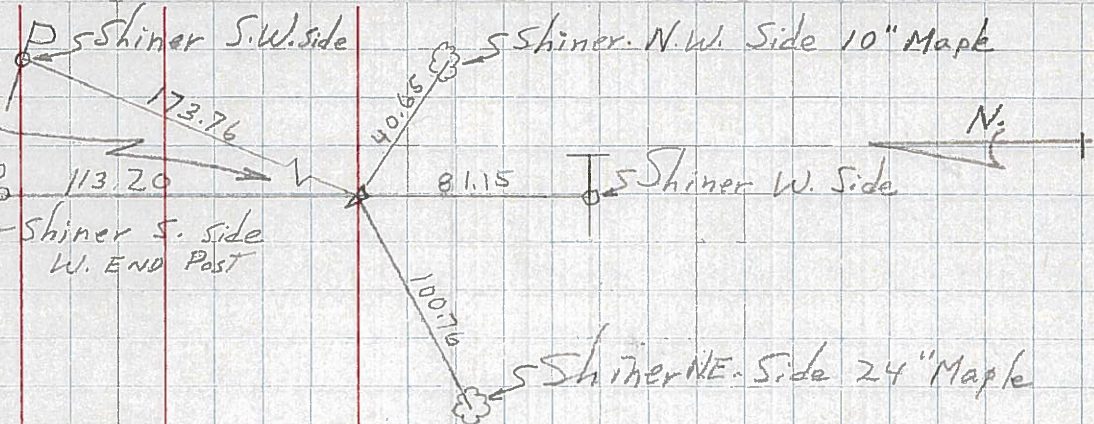
(116-B)



PERSONNEL TITLE PERSONNEL TITLE COUNTY Wi. DATE 2-24-58  
Louys  
 S. R. 6 WEATHER  
 SEC Relocation over Pt. #384 TEMP. 45°  
 DESCRIPTION Witnesses to control Points JOB NO.

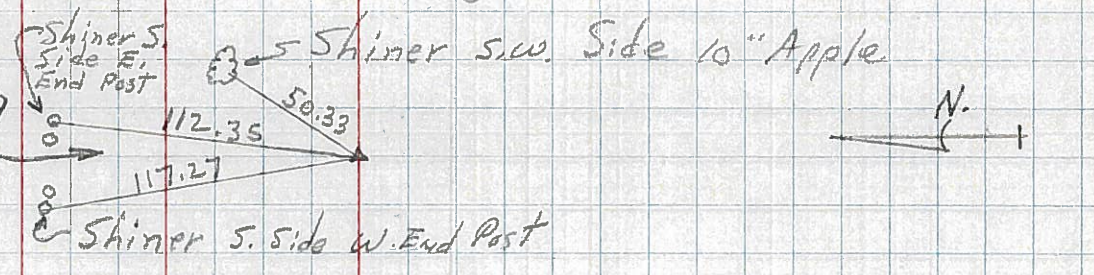
**17-B**  
**119**

P.I. - sta. 247 + 80.60  
 $\Delta = 0^\circ - 00'$   
 (EST. R.R. SPK.)

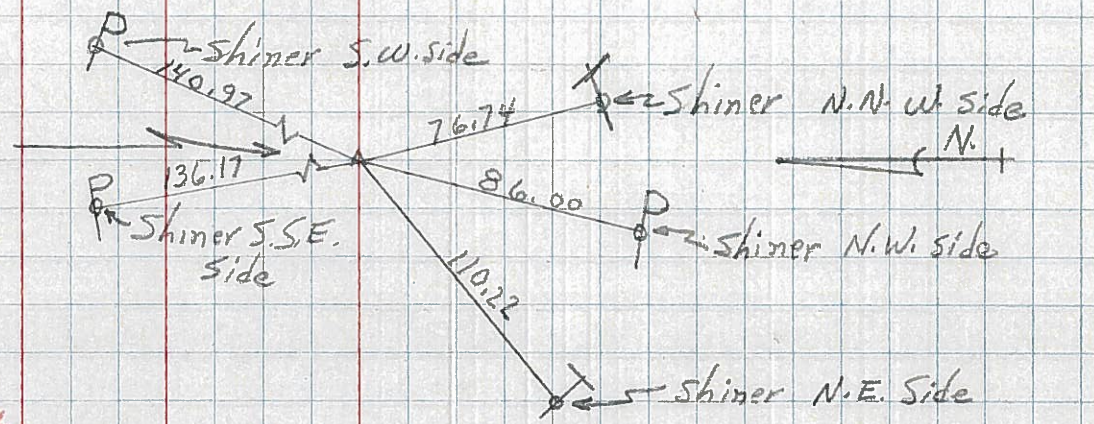


**17-A**  
**118**  
**R/W only**

P.I. - sta. 234 + 64.25  
 $\Delta = 0^\circ - 02' RT.$   
 (Point is 0.20' LT. of a str. line between 1/2 Mi. Pts.)  
 (Fd. Stone (R.R. SPK.))

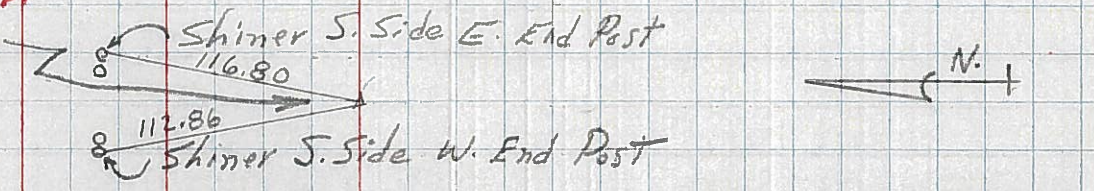


**17**  
**117**  
P.I. - sta. 221 + 28.90  
 $\Delta = 0^\circ - 08' RT.$   
 (EST. R.R. SPK.)

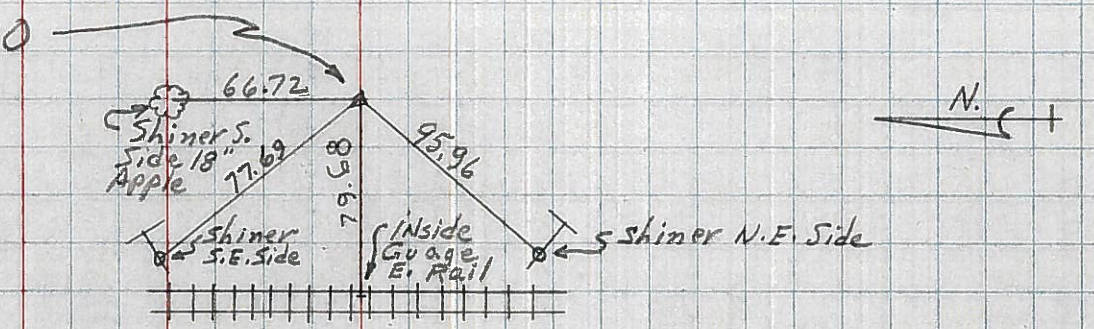


**16-C**  
**116**  
**USE For Constr**

P.I. - sta. 204 + 74.26  
 $\Delta = 0^\circ - 12' RT.$   
 (Point is 2.48' LT. of a str. line between 1/2 Mi. Pts.)  
 (Fd. Stone (R.R. SPK.))



**115**  
P.I. - sta. 194 + 77.70  
 $\Delta = 0^\circ - 15' LT.$   
 (R.R. SPK.)



**16-B**