

O.D.O.T. DISTRICT 2 SURVEY OFFICE (USE ONLY)

PERSONNEL

REFERENCE NO. 17

SHEET 5 OF 19

NOTES RHOADES

DATE 7/25/18

ROUTE US 6

H.C. O'DONNELL

WEATHER SUNNY

COUNTY WILLIAMS

R.C. TRENKA

TEMP. 73°

TOWNSHIP PULASKI

DWG BY NIESE PID 95792

SECTION 33

T 6 N R 3 E

TYPE MONUMENT R.R.SPIKE

~~ON SURFACE~~ - BELOW 5"

OFFSET C PAVEMENT ON LT : RT

- TO - EDGE PAVEMENT

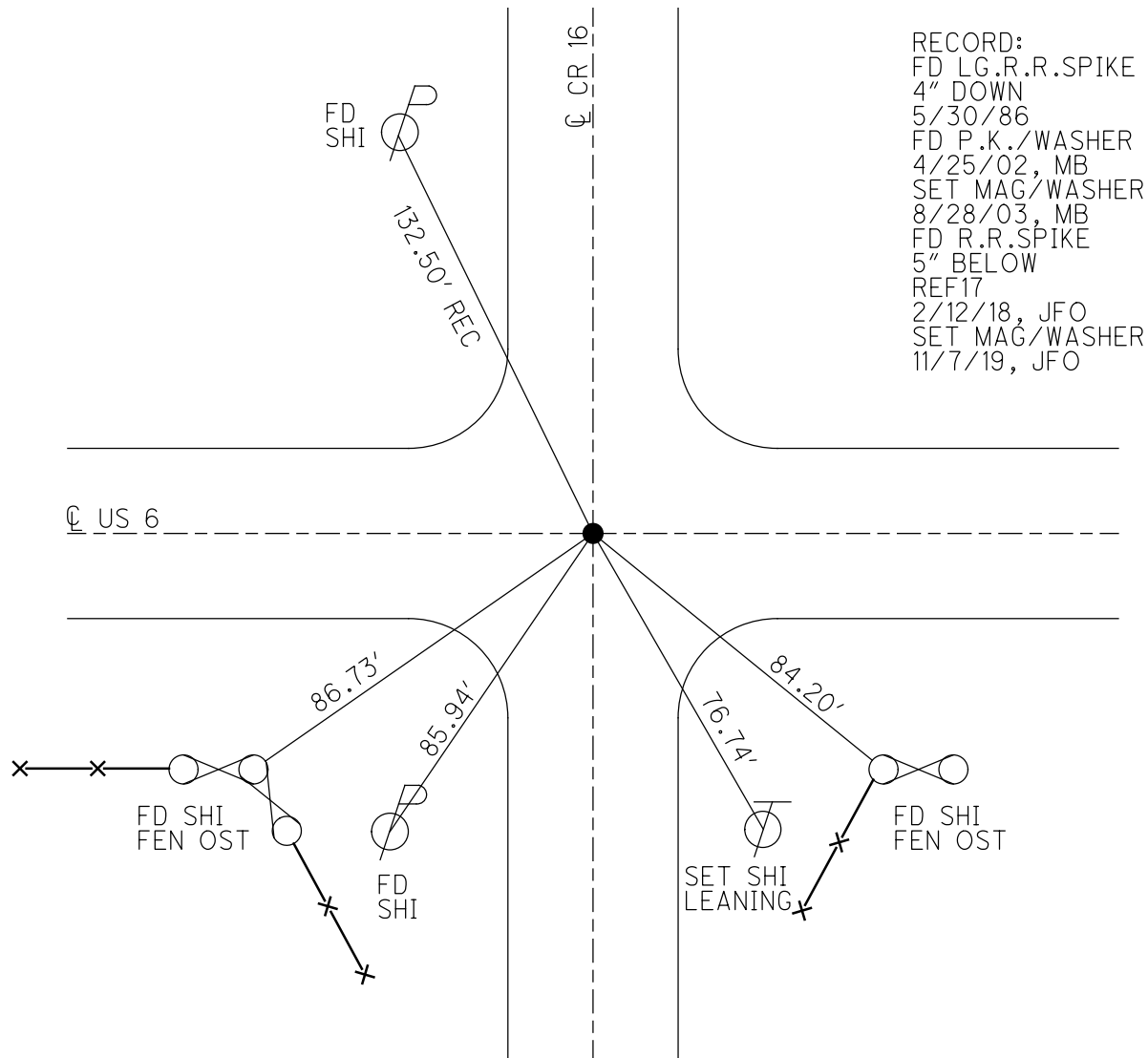
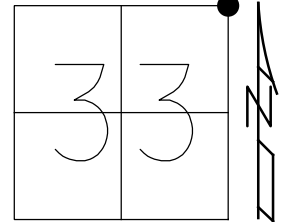
STATION: 800+91.85

HORZ.DATUM: NAD83(2011)

GEOID: 2012A

GRID: NORTHING: 653111.812

EASTING: 1415605.009



RECORD:
 FD LG.R.R.SPIKE
 4" DOWN
 5/30/86
 FD P.K./WASHER
 4/25/02, MB
 SET MAG/WASHER
 8/28/03, MB
 FD R.R.SPIKE
 5" BELOW
 REF17
 2/12/18, JFO
 SET MAG/WASHER
 11/7/19, JFO

O.D.O.T. DISTRICT 2 SURVEY OFFICE

PERSONNEL

REFERENCE NO. 17

SHEET 5 OF 20

NOTES Barnhisel

H.C. Centerbury

R.C. Moser

DATE 4-25-02

WEATHER Clear / windy

TEMP. +45°

ROUTE U.S. 6

COUNTY WILLIAMS

TOWNSHIP DULASKI

SECTION 33

T6 N R 3 E

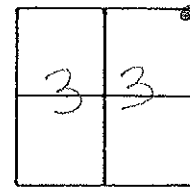
TYPE MONUMENT PK & Washer

ON SURFACE - BELOW on surface

LEFT- ☉ PAV'T. - RIGHT ☉

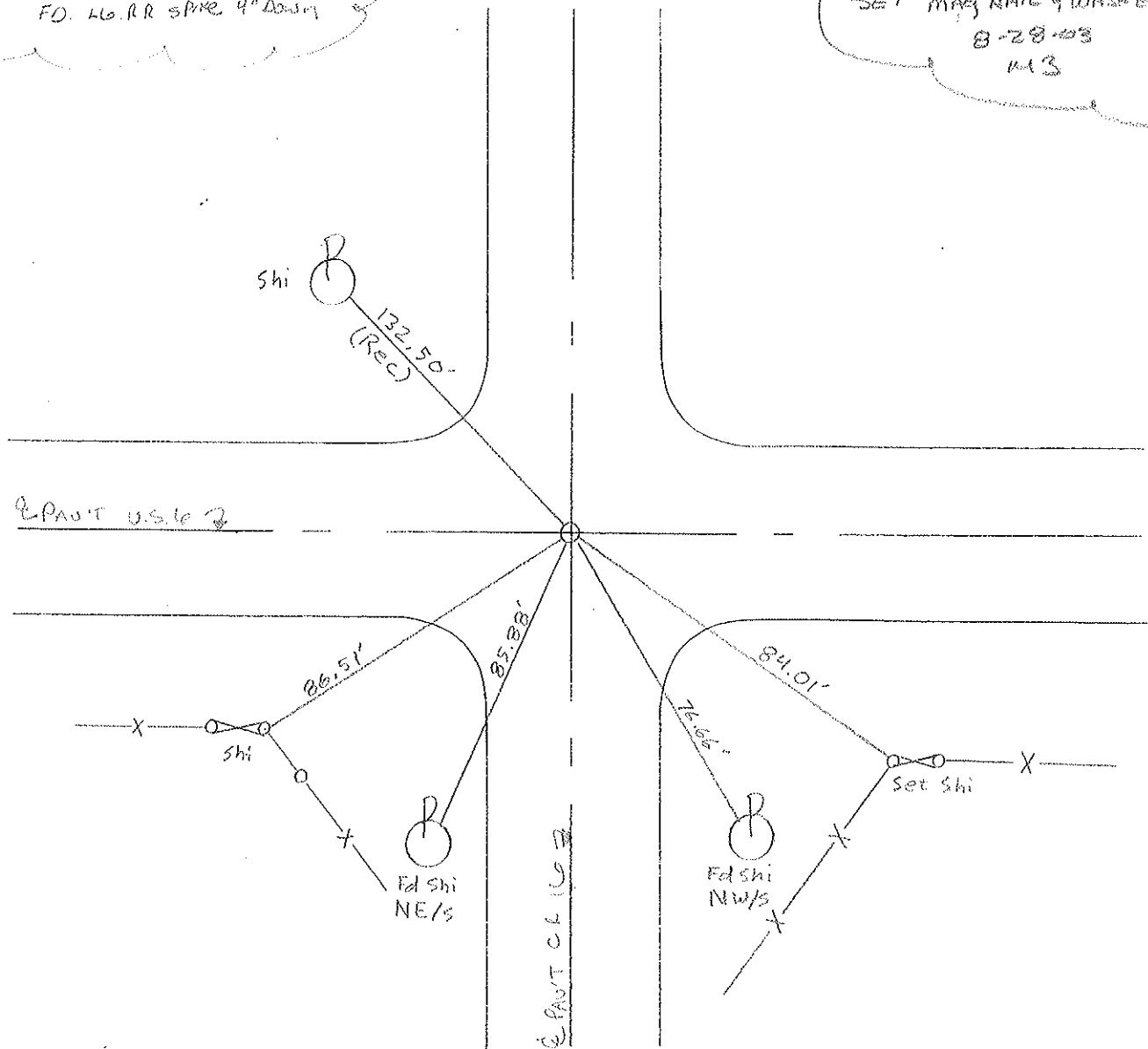
TO EDGE PAVEMENT ON 2 BOTH

S.L.M. 801+39



RECORD: 5-30-86
FD. LG. RR SPARE 4" Down

SET MAG NAIL & WASHER
8-28-03
M3



O.D.O.T. DISTRICT 2 SURVEY OFFICE

PERSONNEL

REFERENCE NO. 17

SHEET 6 OF 22

NOTES VAN DUSEN

H.C. BARNHISEL

R.C. KUSZ

BURNETT

DATE 7 July 92

WEATHER cloudy

TEMP. 68°

ROUTE US 6

COUNTY Williams

TOWNSHIP Pulaski

SECTION 27, 28, 33, 34

T 6 N R 3 E

TYPE MONUMENT PK & WASHER

ON SURFACE - BELOW YES

~~LEFT - & PAV'T. - RIGHT~~ YES

11.8 TO RT EDGE PAVEMENT

S.L.M. 801+39

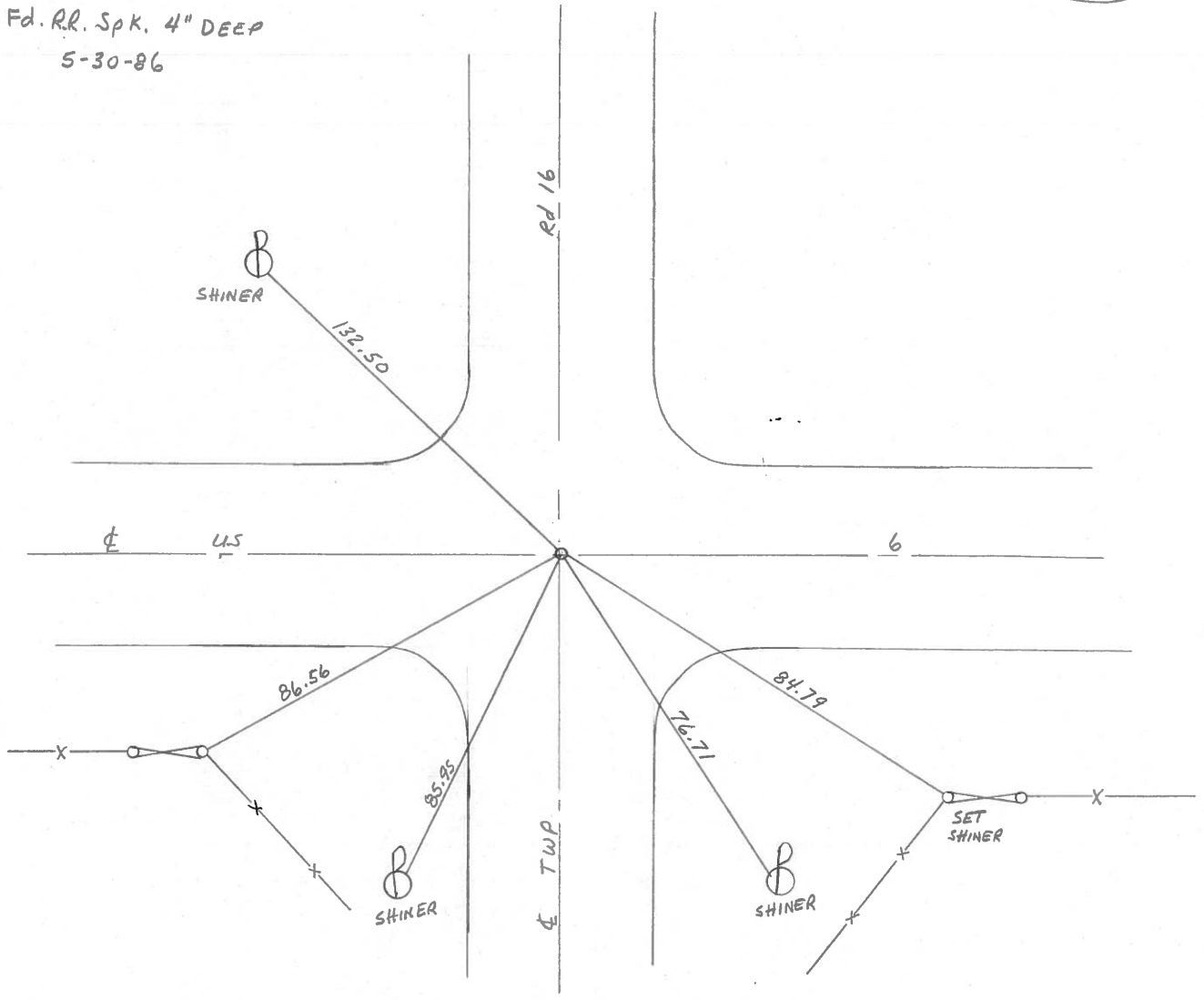
28	27
33	34



Fd. RR. Spk in CENTER
OF 24' CONC. PVT.

Fd. RR. Spk. 4" DEEP
5-30-86

SET PK & WASHER
10-26-92
MB



PERSONNEL TITLE PERSONNEL TITLE

Red Beach
W. Knape

COUNTY Williams DATE Dec 1975

S. R. US 6 WEATHER

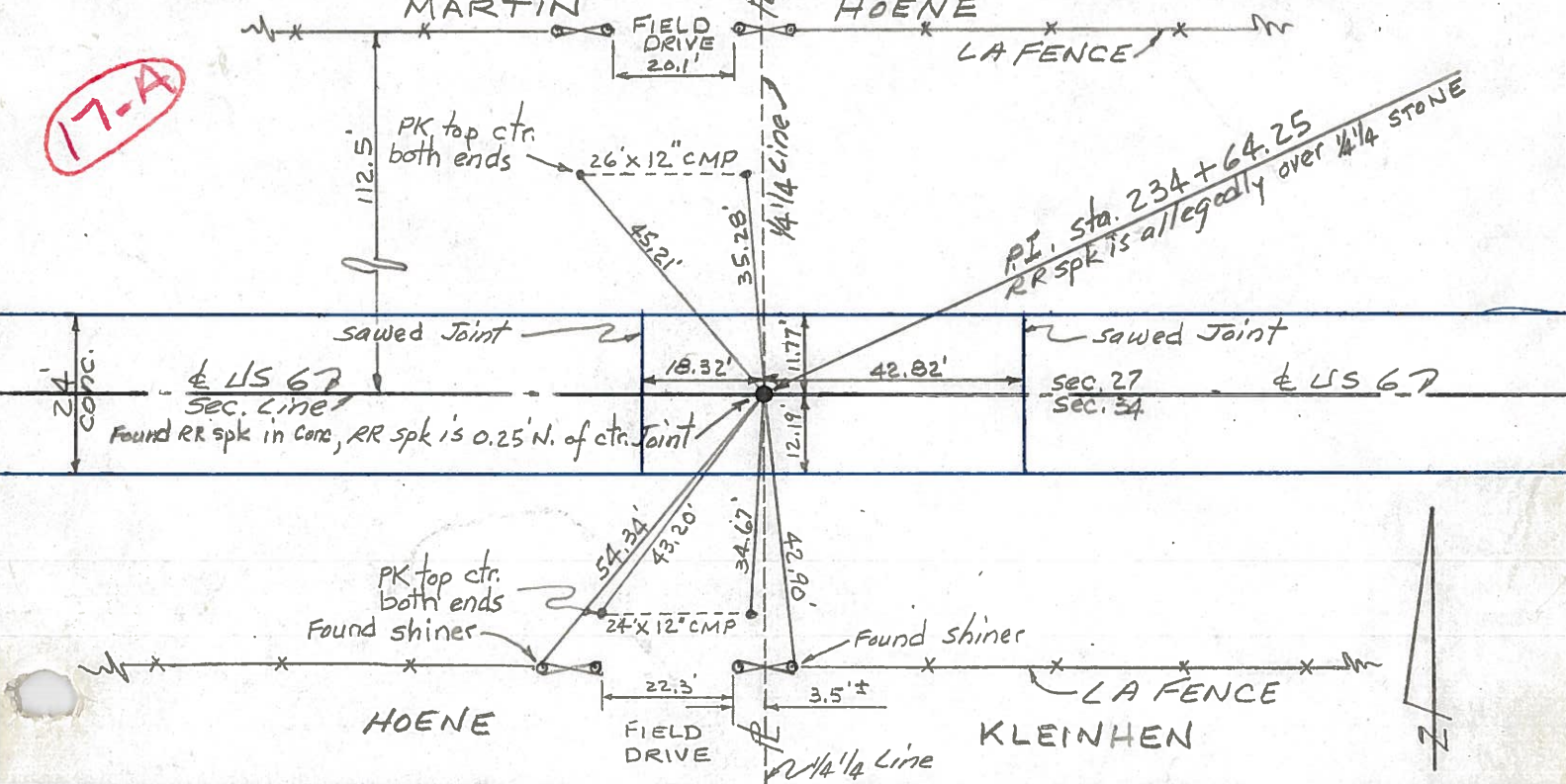
SEC. Pulaski Twp TEMP.

DESCRIPTION CONTROL POINTS JOB NO.

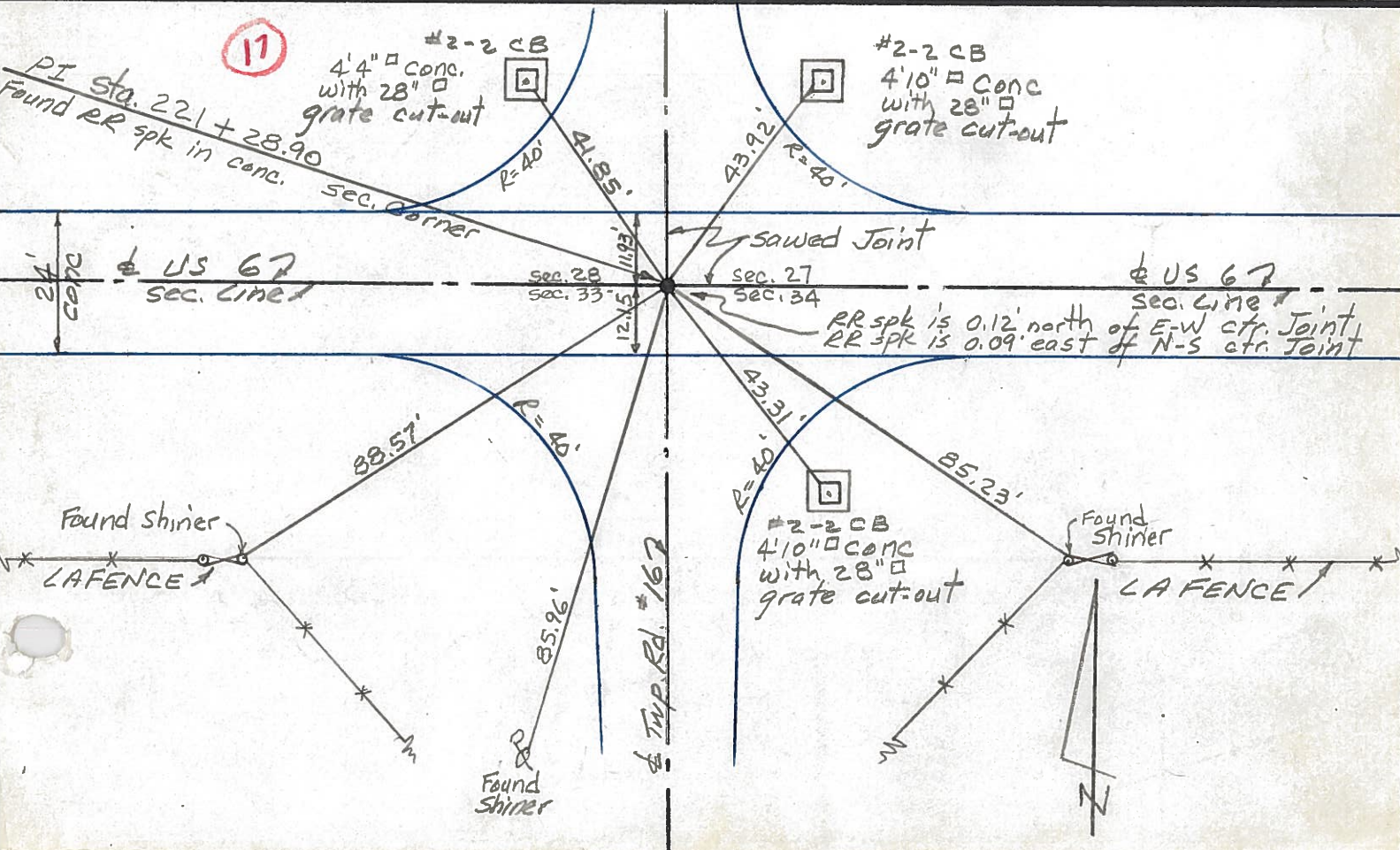
MARTIN

HOENE

17-A



PI. Sta. 234+64.25
RR spk is allegedly over 1/4 stone



17

PI Sta. 221+28.90
Found RR spk in conc.

RR spk is 0.12' north of E-W ctr. Joint
RR spk is 0.09' east of N-S ctr. Joint

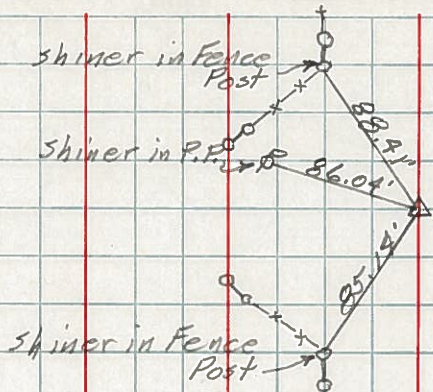
Twp. Rd. #167

117 W. - 119 S

PERSONNEL	TITLE	PERSONNEL	TITLE	COUNTY	DATE	WEATHER	TEMP.
Hoover		Young		Williams	12-8-60	Cloudy	26°
Ruffer		Mohler		S. R. 6			
Hoff				SEC.			
Delventhal							

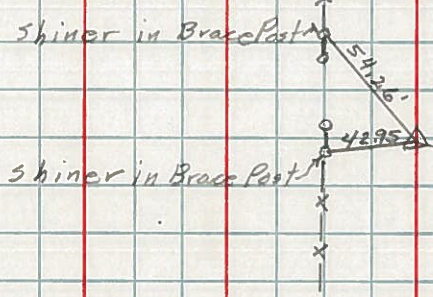
DESCRIPTION _____ LEFT _____ CENTER LINE _____ RIGHT _____ JOB NO. _____

117
 (17)



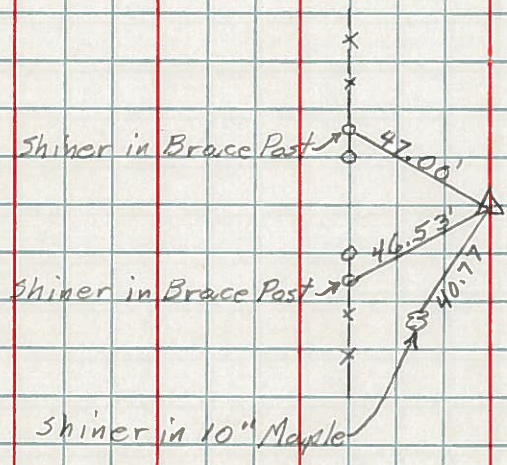
Sta. 221 + 28.90
 Found R. R. Spk.
 Int. Co. Rd. 16

118
 (17-A)



Sta. 234 + 64.25
 Found R. R. Spk.
 Shiner's Side 10" Apple

119
 (17-B)



Sta. 247 + 80.60
 Found R. R. Spk.

PERSONNEL TITLE PERSONNEL TITLE

Louys

COUNTY Wi.

DATE 2-24-58

S. R. 6

WEATHER

SEC Relocation over Rt. #384 TEMP. 45°

DESCRIPTION

Witnesses to control Points

JOB NO.

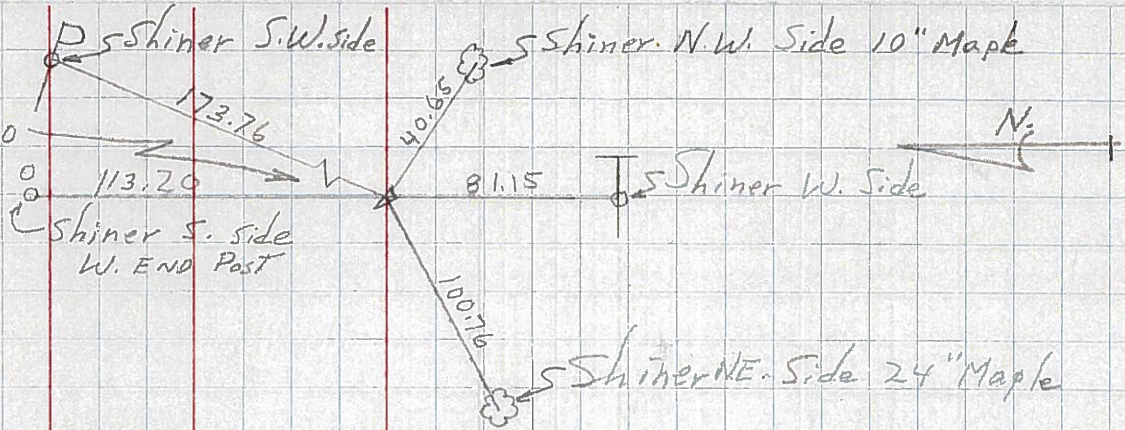
LEFT

CENTER LINE

RIGHT

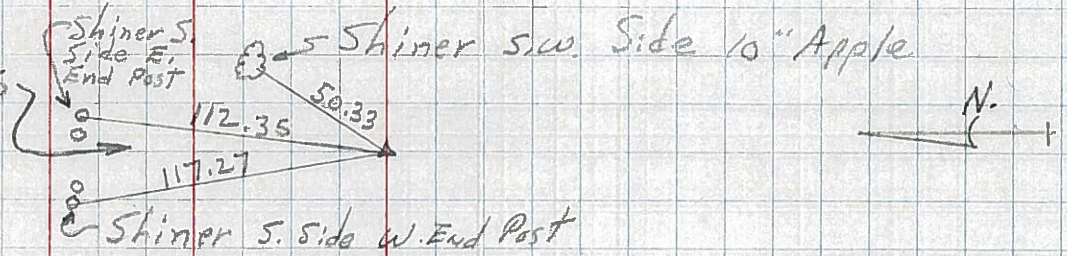
17-B
119

P.I. - Sta. 247 + 80.60
 $\Delta = 0^\circ - 00'$
(EST. R.R. SPK.)

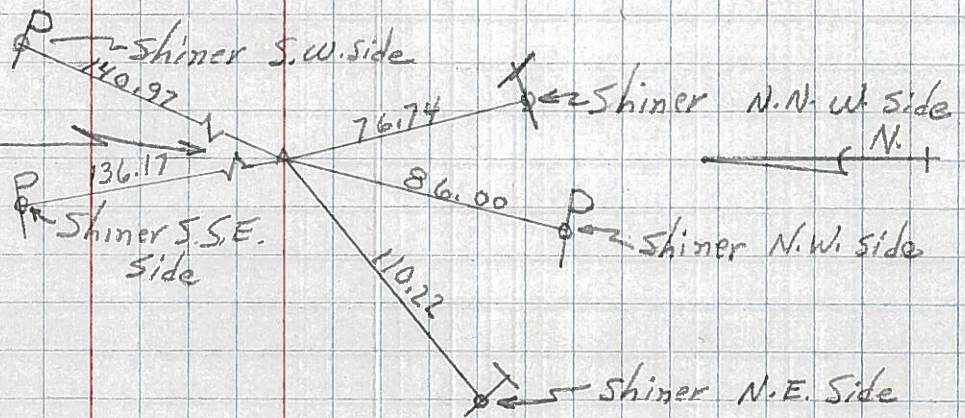


118
17-A R/W only

P.I. - Sta. 234 + 64.25
 $\Delta = 0^\circ - 02'$ RT.
(Point is 0.20' LT. of a str. line between 1/2 Mi. Pts.)
(Fd. Stone (R.R. SPK.))

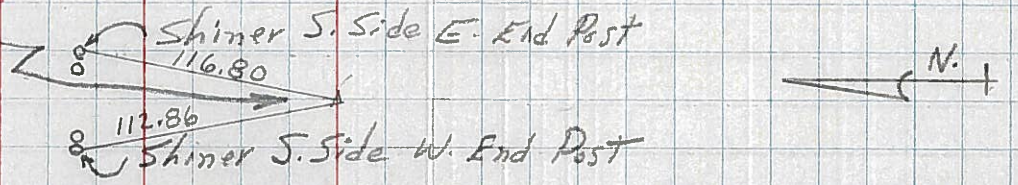


117
17 P.I. - Sta. 221 + 28.90
 $\Delta = 0^\circ - 08'$ RT.
(EST. R.R. SPK.)



116
16-C USE For Constr

P.I. - Sta. 204 + 74.26
 $\Delta = 0^\circ - 12'$ RT.
(Point is 2.48' LT. of a str. line between 1/2 Mi. Pnts.)
(Fd. Stone (R.R. SPK.))



115
P.I. - Sta. 194 + 77.70
 $\Delta = 0^\circ - 15'$ LT.
(R.R. SPK.)

16-B

