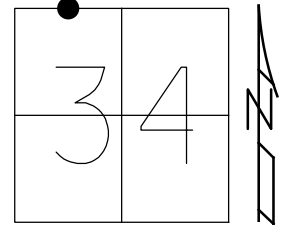


O.D.O.T. DISTRICT 2 SURVEY OFFICE (USE ONLY)

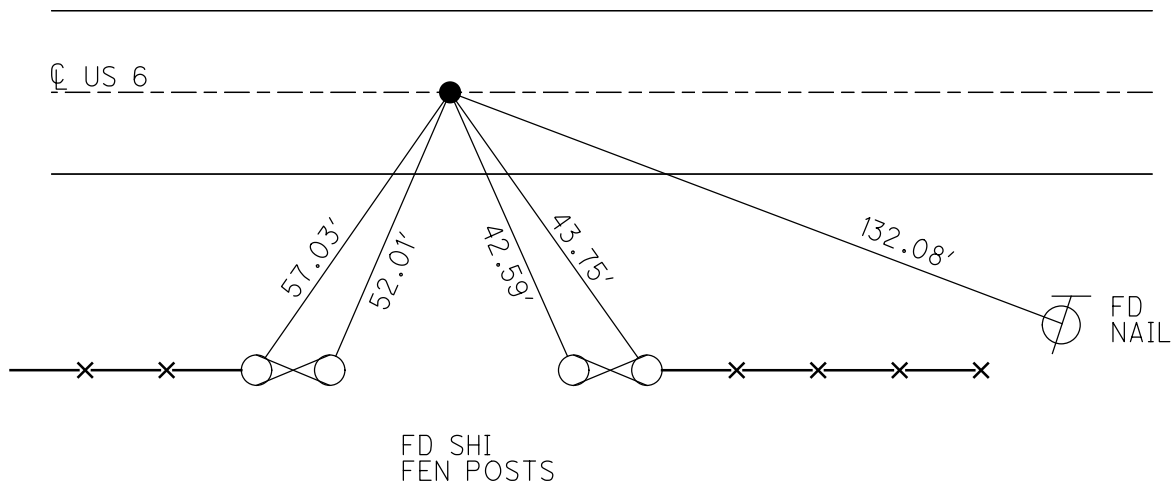
PERSONNEL \_\_\_\_\_ REFERENCE NO. 17 A SHEET 6 OF 19  
 NOTES O'DONNELL DATE 8/29/19 ROUTE US 6  
 H.C. LEU WEATHER SUNNY COUNTY WILLIAMS  
 R.C. NIESE TEMP. 63° TOWNSHIP PULASKI  
 DWG BY NIESE PID 95792 SECTION 34  
 T 6 N R 3 E

TYPE MONUMENT R.R.SPIKE  
~~ON SURFACE~~ - BELOW 4 1/2"  
 OFFSET  $\varnothing$  PAVEMENT 0.5' LT : ~~RT~~  
11.2' TO LT EDGE PAVEMENT  
 STATION: 814+25.90



HORIZ.DATUM: NAD83(2011) GEOID: 2012A  
 GRID: NORTHING: 653081.207 EASTING: 1416938.705

RECORD:  
 FD LG.R.R.SPIKE  
 4" DOWN  
 5/30/86  
 FD P.K./WASHER  
 4/25/02, MB  
 SET MAG/WASHER  
 8/28/03, MB  
 FD R.R.SPIKE  
 4 1/2" DOWN  
 REFA17  
 2/12/18, JFO  
 SET MAG/WASHER  
 11/7/19, JFO



# O.D.O.T. DISTRICT 2 SURVEY OFFICE

PERSONNEL \_\_\_\_\_

REFERENCE NO. 17-A

SHEET 6 OF 20

NOTES Barnhisel

H.C. Canterbury

R.C. Moses

DATE 4-25-02

WEATHER Clear/windy

TEMP. +50°

ROUTE U.S. 6

COUNTY WILLIAMS

TOWNSHIP POLASKI

SECTION 34

T 6 N R 3 E

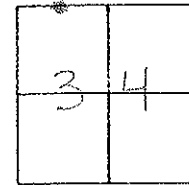
TYPE MONUMENT PK + Washer

ON SURFACE - BELOW on surface

LEFT - PAV'T. - RIGHT 0.5' LT

11.2 TO LT EDGE PAVEMENT

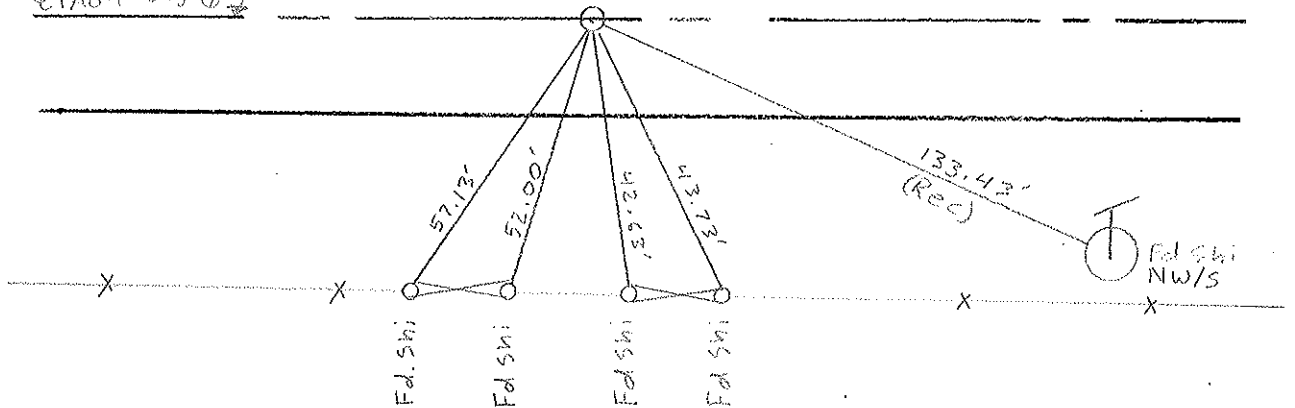
S.L.M. 814+75



RECORD: 5-30-02  
FO. 16. RR STRIKE 4' DASH

Set MAG NAIL & WASHER  
8-28-03  
MS

REPAV'T U.S. 6



# O.D.O.T. DISTRICT 2 SURVEY OFFICE

PERSONNEL

REFERENCE NO. 17-A

SHEET 7 OF 22

NOTES VAN DUSEN

H.C. BARNHISEL

R.C. KUSZ

BURNETT

DATE 7 July 92

WEATHER cloudy

TEMP. 68°

ROUTE US6

COUNTY Williams

TOWNSHIP Pulaski

SECTION 34

T 6 N R 3 E

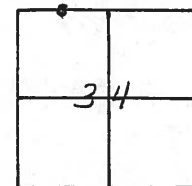
TYPE MONUMENT PK & WASHER

ON SURFACE - ~~BELOW~~ YES

~~LEFT - & PAV'T. - RIGHT~~ YES

12.2 TO RT EDGE PAVEMENT

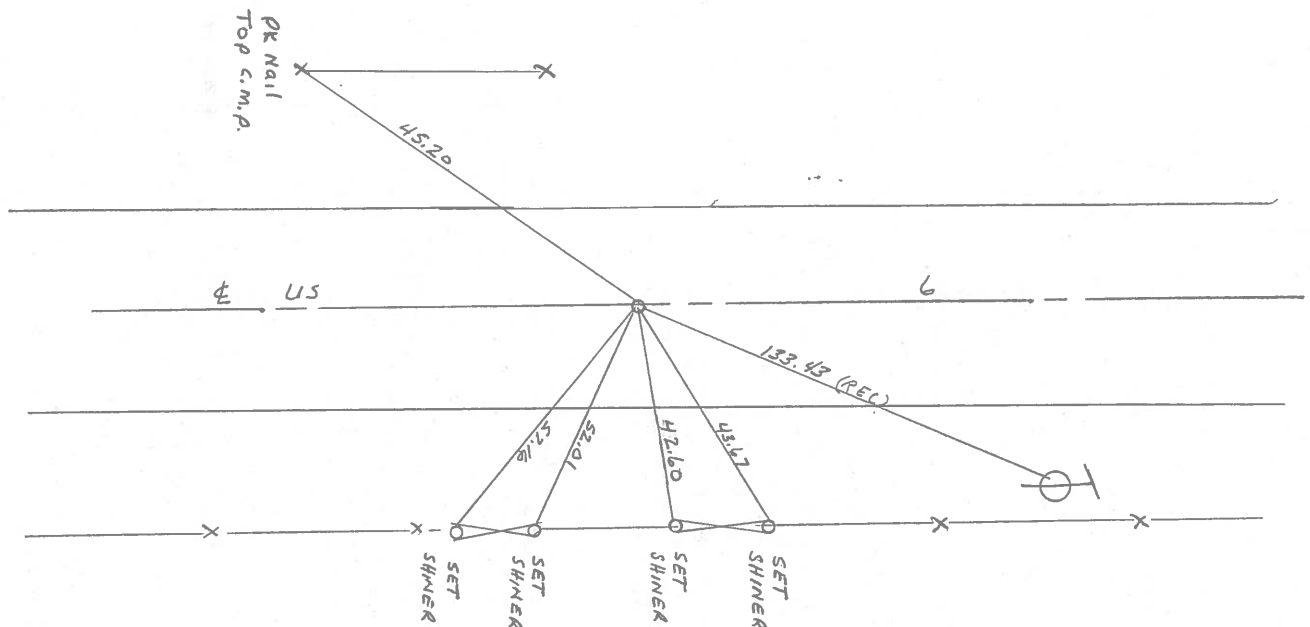
S.L.M. 814+75



Fd. RR Spk IN CENTER  
OF 24" CONC. PVT.

Fd. RR. Spk. 4" DEEP  
5-30-86

SET PK & WASHER  
10-26-92  
MB



County Williams S.R. 6

Township Pulaski

Section 34

T    N, R    E

Personnel D. Curtis

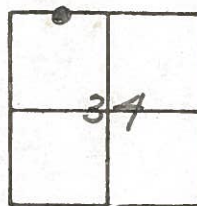
P. Neuser

R. Michalak

Date 4 May 84

Weather Cloudy

Temp. 45°

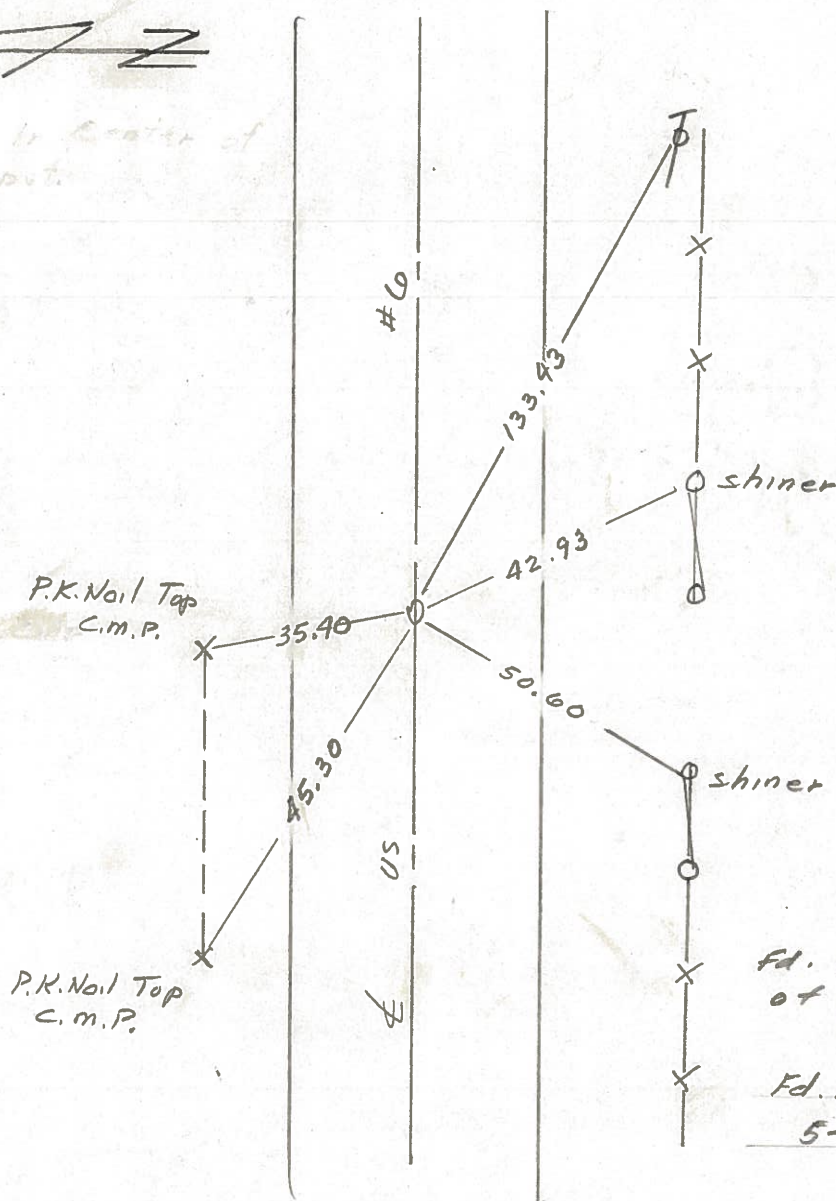


813 + 85 ±

REF. No. 17-A



Fd. RR. in center of 24' Con. pt.



Fd. RR 5 ft. in center of 24' Con. pt.

Fd. RR. Spk. 4" Deep-  
5-30-86

PERSONNEL TITLE PERSONNEL TITLE

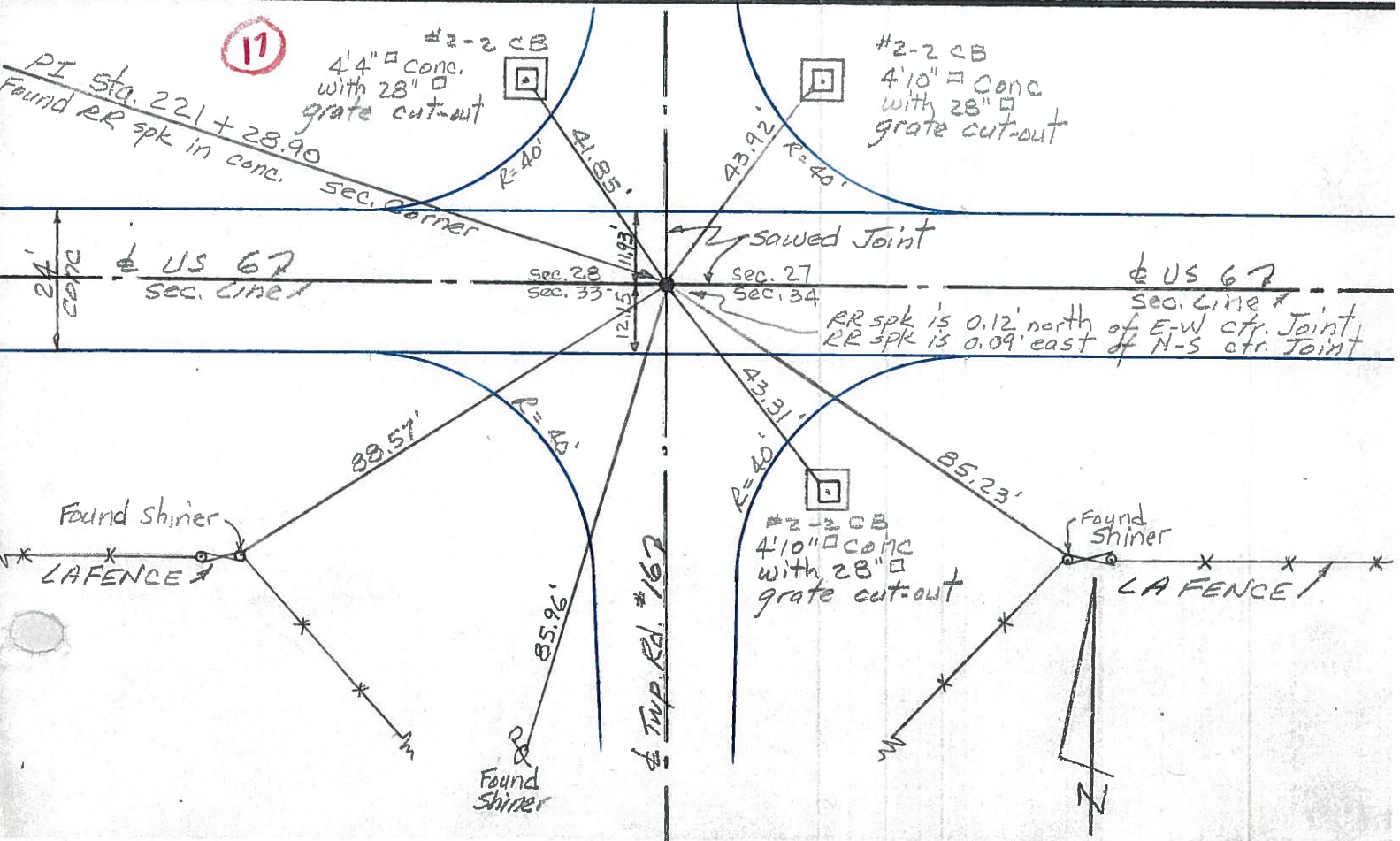
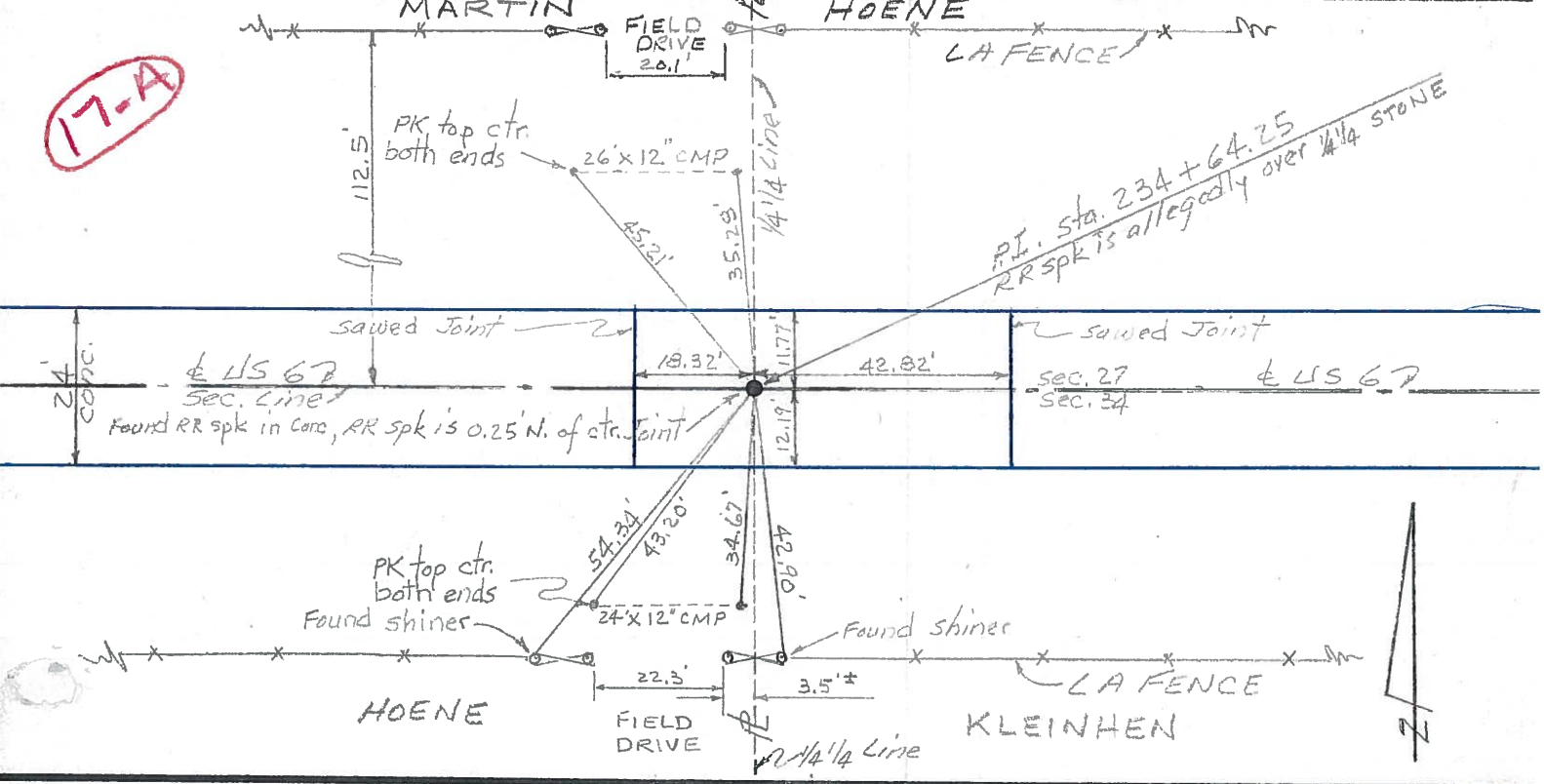
Red Beach  
W. Knape

COUNTY Williams DATE Dec 1975

S. R. US 6 WEATHER

SEC. Pulaski Twp TEMP

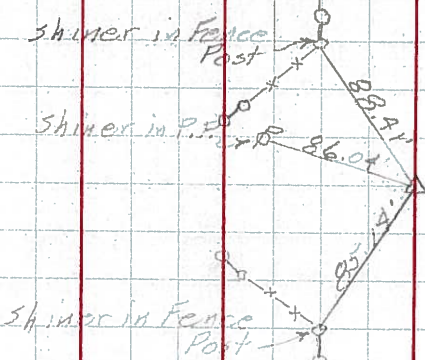
DESCRIPTION CONTROL POINTS JOB NO.



PERSONNEL	TITLE	PERSONNEL	TITLE	COUNTY	DATE	WEATHER	TEMP.
Hoover		Young		Williams	12-8-60	Cloudy	26°
Ruffer		Mohler		S. R. 6			
Hoff				SEC.			
Delventhal							

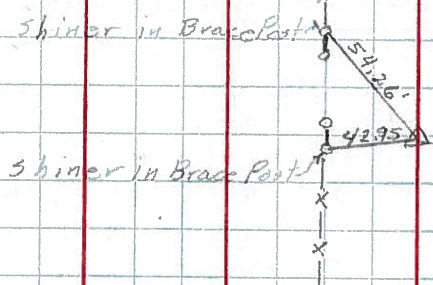
DESCRIPTION	LEFT	CENTER LINE	RIGHT	JOB NO.
-------------	------	-------------	-------	---------

117.  
(17)



Sta. 221+28.90  
Found R. R. Spk.  
Int. Co. Rd. 16

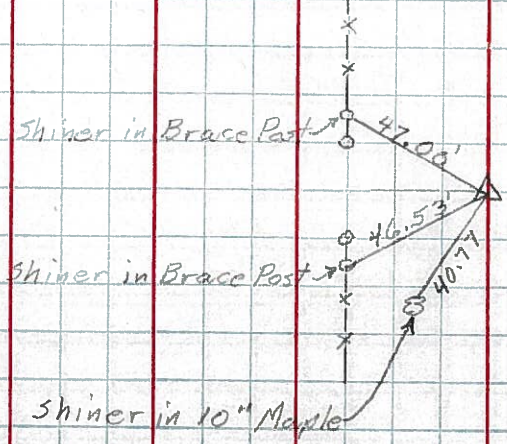
118.  
(17-A)



Sta. 234+64.25  
Found R. R. Spk.

shiners Side 10" Apple

119.  
(17-B)



Sta. 247+80.60  
Found R. R. Spk.

PERSONNEL TITLE PERSONNEL TITLE

Louys

COUNTY Wi.

DATE 2-24-58

S. R. 6

WEATHER

SEC Relocation over Pt. #384

TEMP. 45°

DESCRIPTION Witnesses to control Points

JOB NO.

LEFT

CENTER LINE

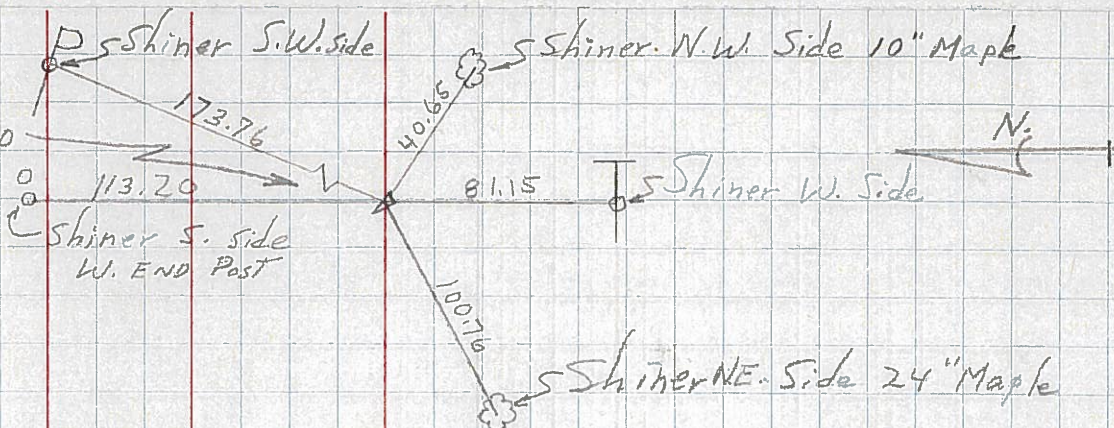
RIGHT

17-B

P.I. - sta. 247 + 80.60

$\Delta = 0^\circ - 00'$

(EST. R.R. SPK.)



17-A

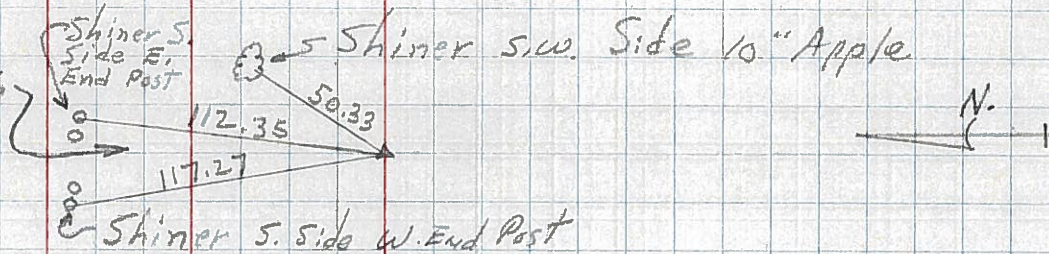
R/W only

P.I. - sta. 234 + 64.25

$\Delta = 0^\circ - 02'$  RT.

(Point is 0.20' Lt. of a str. line between 1/2 Mi. Pts.)

(Fd. Stone (R.R. SPK.))

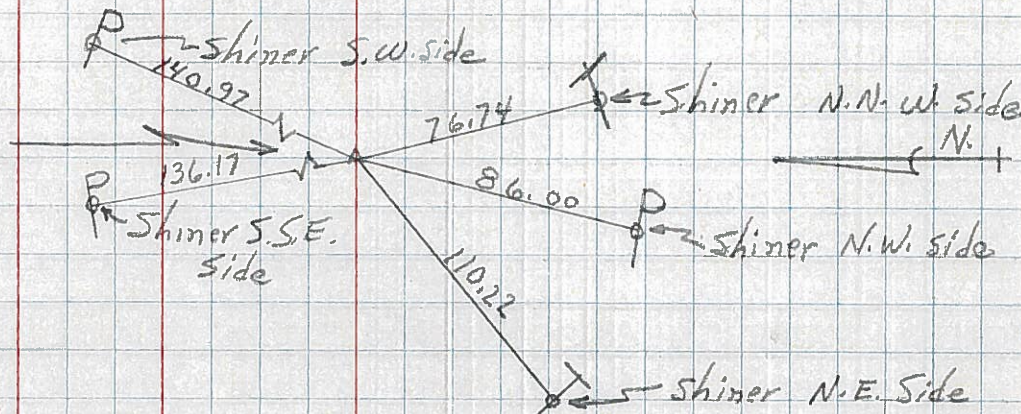


17

P.I. - sta 221 + 28.90

$\Delta = 0^\circ - 08'$  RT.

(EST. R.R. SPK.)



16-C

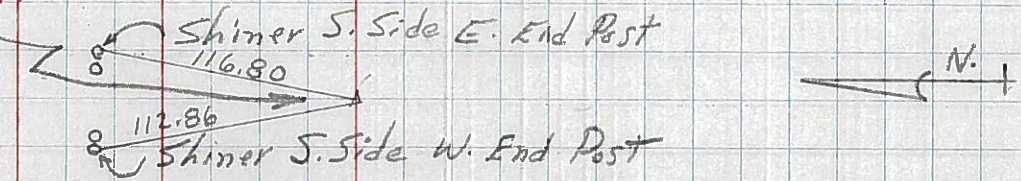
USE For Constr

P.I. - sta. 204 + 74.26

$\Delta = 0^\circ - 12'$  RT.

(Point is 2.48' Lt. of a str. line between 1/2 Mi. Pts.)

(Fd. Stone (R.R. SPK.))

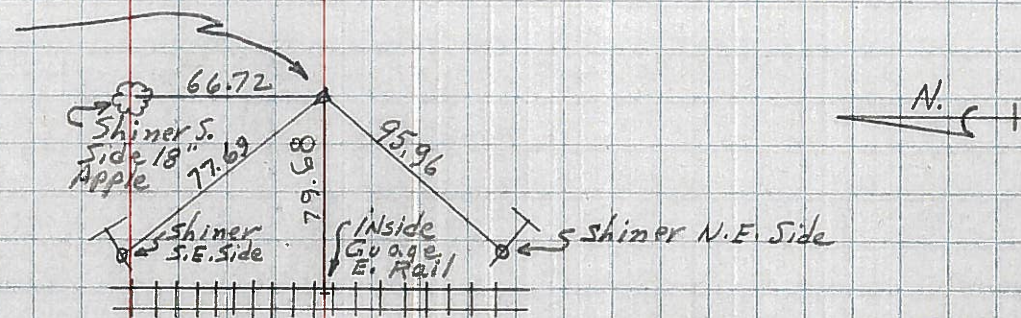


115

P.I. - sta. 194 + 77.70

$\Delta = 0^\circ - 15'$  LT.

(R.R. SPK.)



16-B