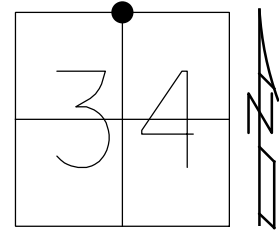


O.D.O.T. DISTRICT 2 SURVEY OFFICE (USE ONLY)

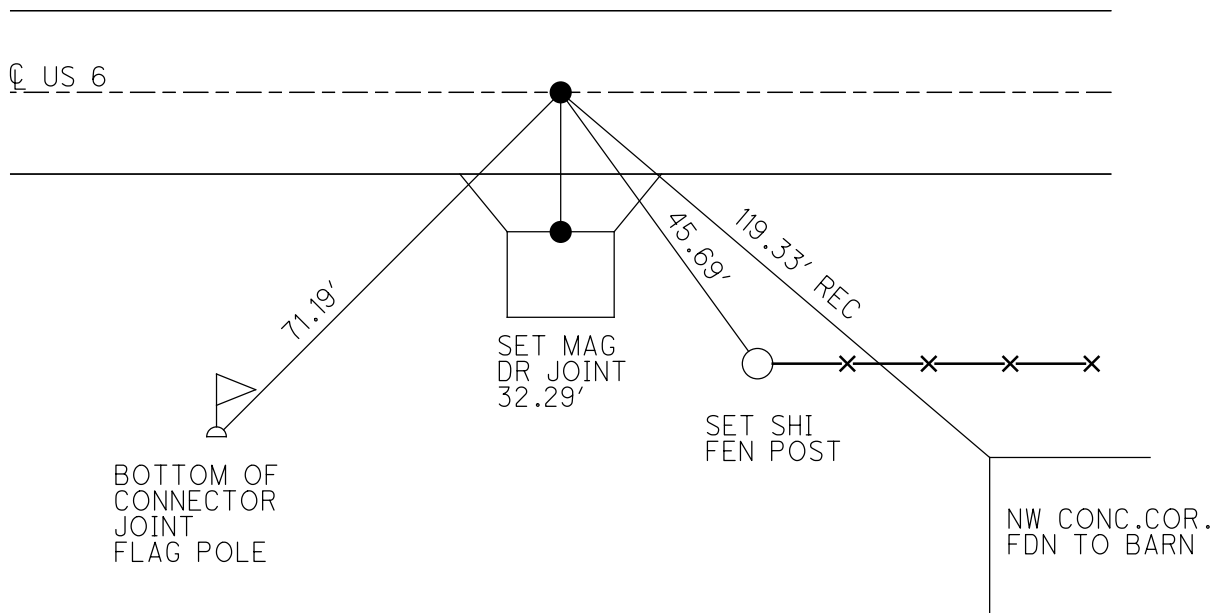
PERSONNEL \_\_\_\_\_ REFERENCE NO. 17 B SHEET 7 OF 19  
 NOTES LEU DATE 2/12/18 ROUTE US 6  
 H.C. O'DONNELL WEATHER SUNNY COUNTY WILLIAMS  
 R.C. SEAMAN TEMP. 26° TOWNSHIP PULASKI  
 DWG BY NIESE PID 95792 SECTION 34  
 T 6 N R 3 E

TYPE MONUMENT MAG/WASHER  
 ON SURFACE - ~~BELOW~~ ON  
 OFFSET Q PAVEMENT 0.2' LT : ~~RT~~  
11.4' TO LT EDGE PAVEMENT  
 STATION: 827+42.49



HORIZ.DATUM: NAD83(2011) GEOID: 2012A  
 GRID: NORTHING: 653050.799 EASTING: 1418254.951

RECORD:  
 FD LG.R.R.SPIKE  
 4" DOWN  
 5/30/86  
 FD P.K./WASHER  
 4/25/02, MB  
 SET MAG/WASHER  
 8/28/03, MB  
 FD MAG/WASHER  
 REFB17  
 2/12/18, JFO  
 FD MAG/WASHER  
 7/25/18, JFO  
 SET MAG/WASHER  
 11/7/19, JFO



# O.D.O.T. DISTRICT 2 SURVEY OFFICE

PERSONNEL

REFERENCE NO. 17-B

SHEET 7 OF 20

NOTES Barnhisel

H.C. Canterbury

R.C. Moser

DATE 4-25-02

WEATHER windy

TEMP. +50°

ROUTE U.S. 6

COUNTY WILLIAMS

TOWNSHIP POLASKI

SECTION 34

T6 N R 3 E

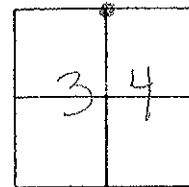
TYPE MONUMENT PK & Washer

ON SURFACE - BELOW on surface

LEFT - ~~C~~ PAVT. - RIGHT 0.2' LT

11.4' TOLL EDGE PAVEMENT

S.L.M. 827+93

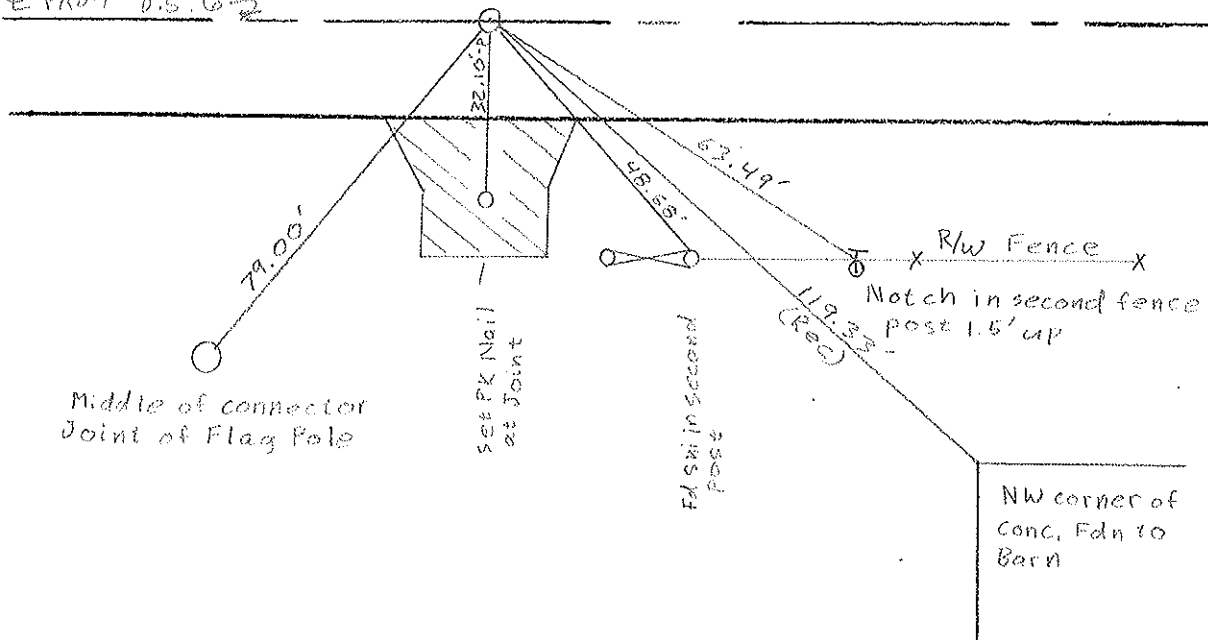


RECORD: 5-30-86  
FO. L6 R.R. PILE 4" DOWN

SET MAG NAIL & WASHER  
8-28-03  
MB



← PAVT U.S. 6 →



# O.D.O.T. DISTRICT 2 SURVEY OFFICE

PERSONNEL

REFERENCE NO. 17-B

SHEET 8 OF 22

NOTES Van DUSEN

H.C. KUSZ

DATE 20 July 92

ROUTE US 6

R.C. McCORMICK

WEATHER SUNNY

COUNTY Williams

TEMP. \_\_\_\_\_

TOWNSHIP Pulaski

SECTION 34

T 6 N R 3 E

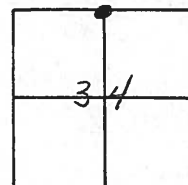
TYPE MONUMENT PK & WASHER

ON SURFACE - BELOW YES

~~LEFT~~ - RIGHT PAV'T. - RIGHT

11.4 TO RT EDGE PAVEMENT

S.L.M. 827+93

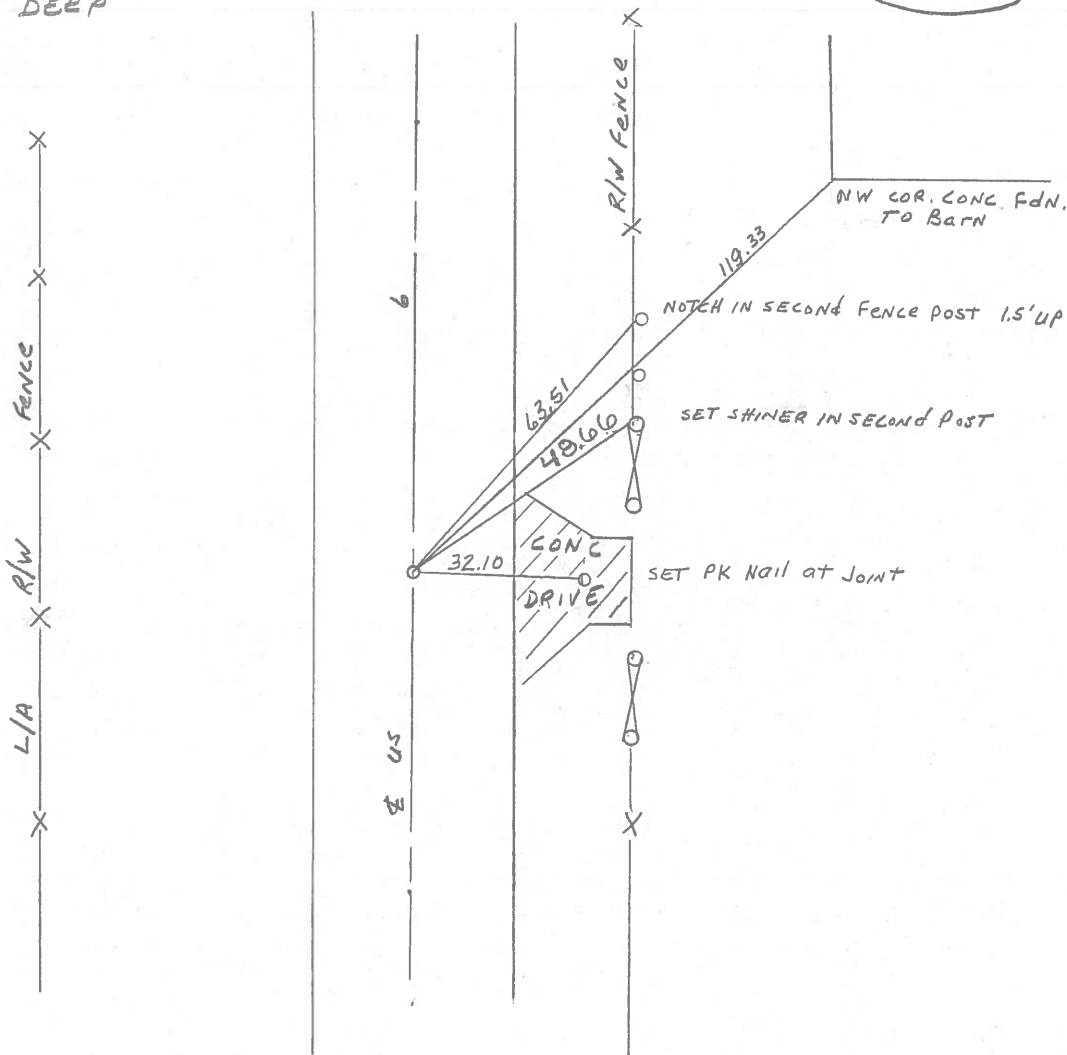


Fd. RR Spk. IN CENTER  
OF CONC. PVT.

Fd. RR Spk. 4" DEEP  
5-30-86



SET PK & WASHER  
10-26-92  
MB



County Williams S.R. #6

Date 7 May 84

Township Polestki

Weather Cloudy

Section 34

Temp. 60°

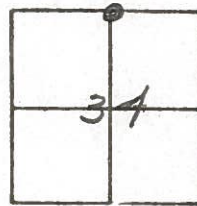
T N, R E

Personnel L. Stone

P. Neuser

R. Michalski

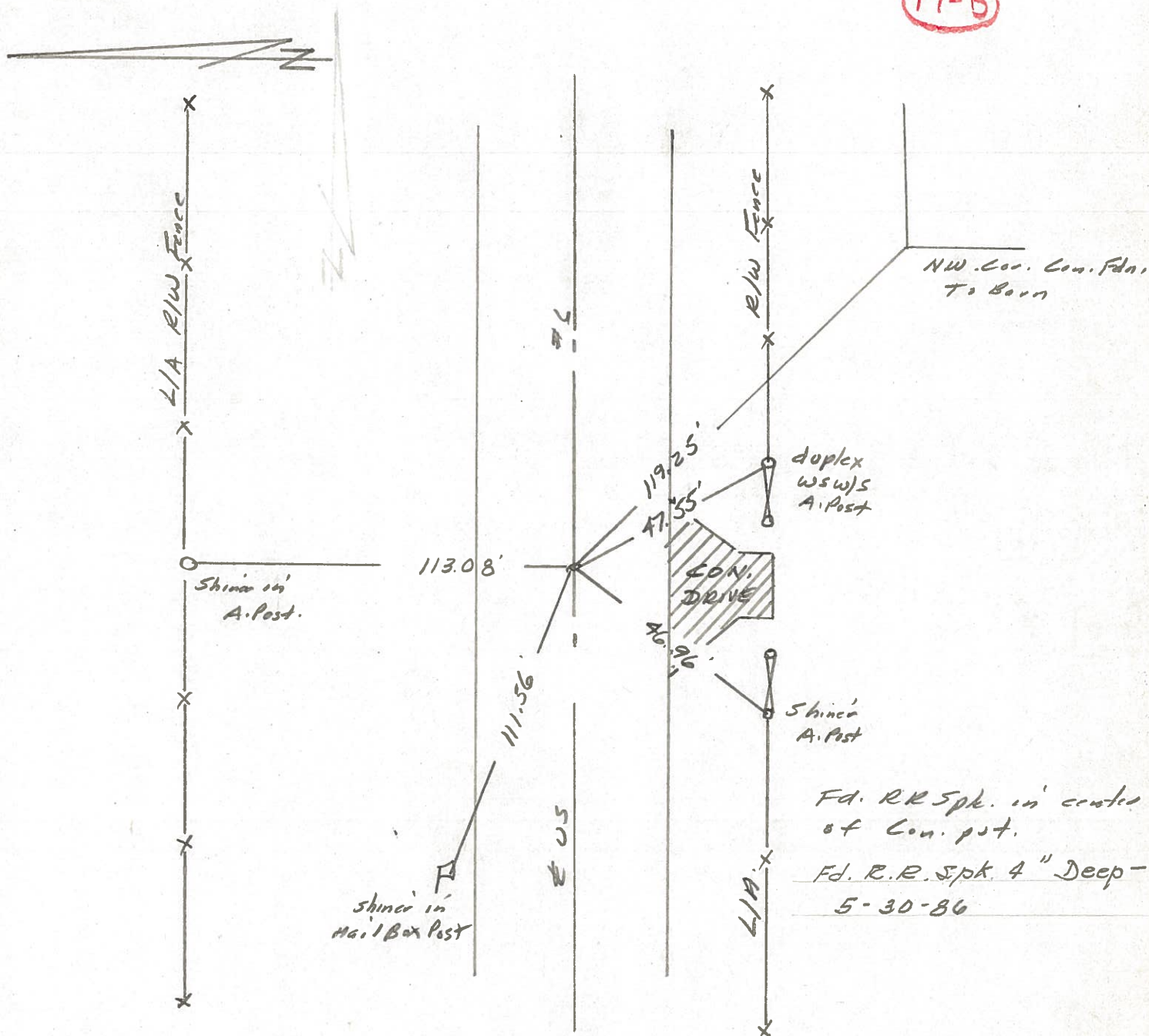
D. Cortis



827+00

REF. NO. 17-A

17-B



PERSONNEL TITLE PERSONNEL TITLE

Red Beach  
W. Knape

COUNTY Williams DATE Dec 1975

S. R. US 6 WEATHER

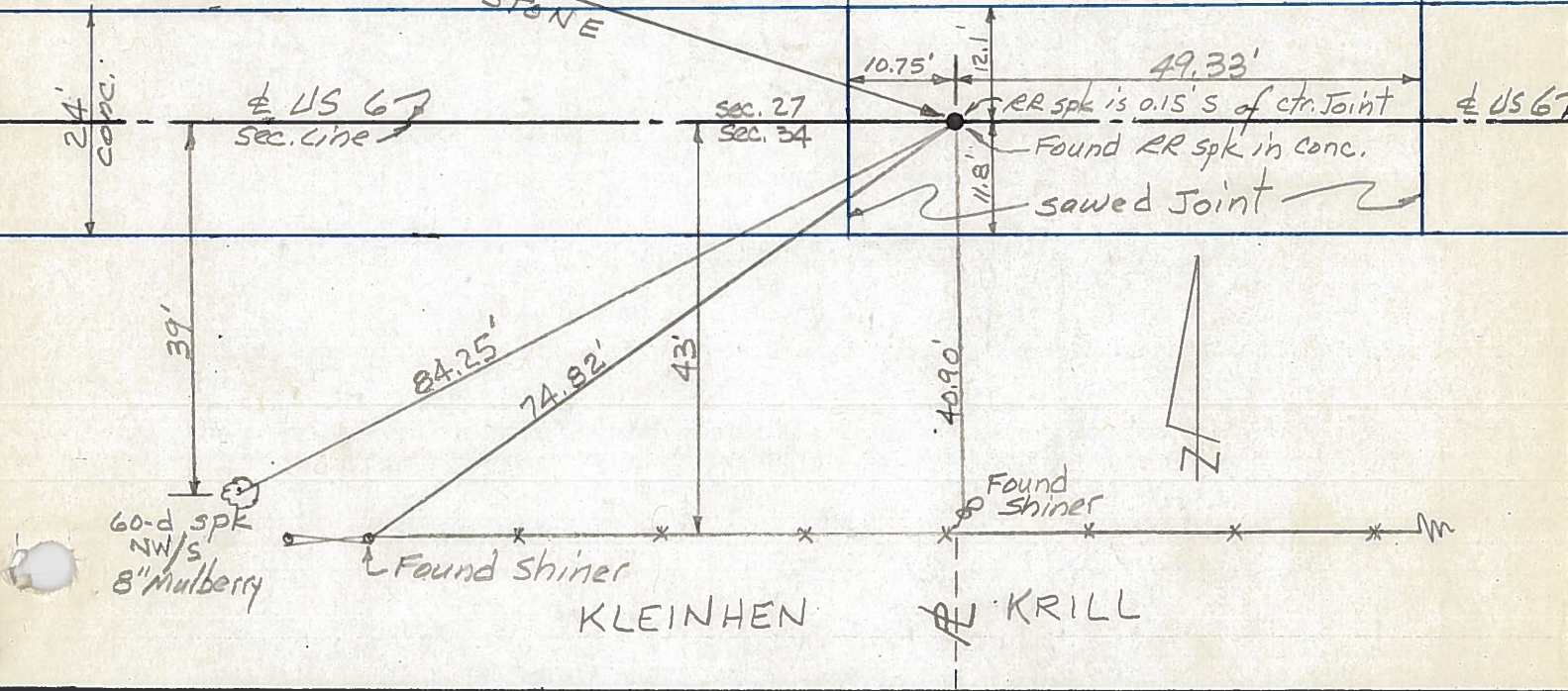
SEC. PULASKI TWP TEMP.

DESCRIPTION CONTROL POINTS JOB NO.

**17-C**

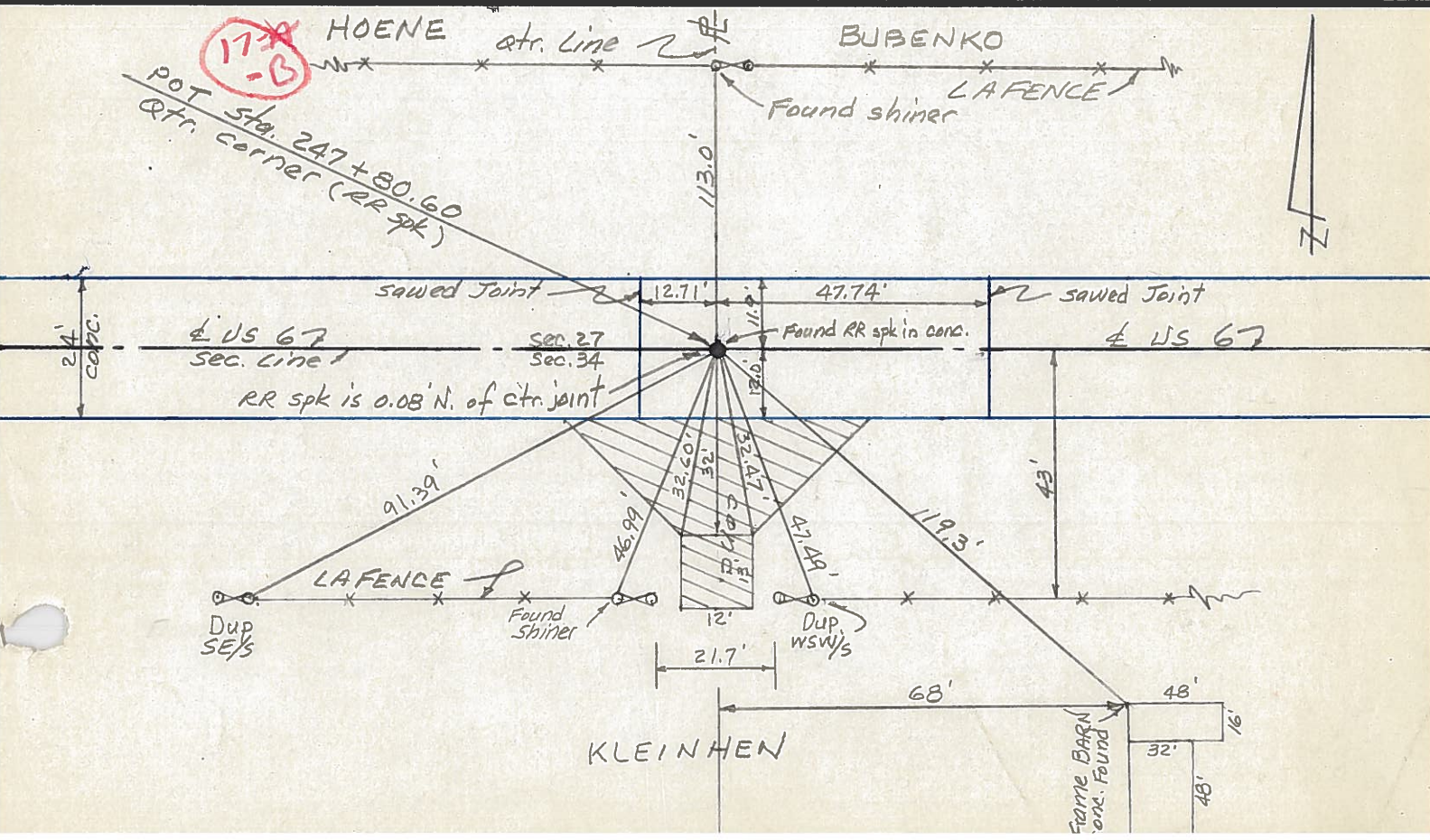
? Not Recovered?

PI sta. 258+00.26  
RR spk allegedly over R STONE



**17-B**

HOENE  
POT sta. 247+80.60  
QTR corner (RR spk)



PERSONNEL TITLE PERSONNEL TITLE

Hoover \_\_\_\_\_ Young \_\_\_\_\_

Ruffer \_\_\_\_\_ Mohler \_\_\_\_\_

Hoff \_\_\_\_\_ \_\_\_\_\_

Delventhal \_\_\_\_\_ \_\_\_\_\_

COUNTY Williams

DATE 12-8-60

S. R. 6

WEATHER Cloudy

SEC. \_\_\_\_\_

TEMP. 26°

DESCRIPTION

LEFT

CENTER LINE

RIGHT

JOB NO. \_\_\_\_\_

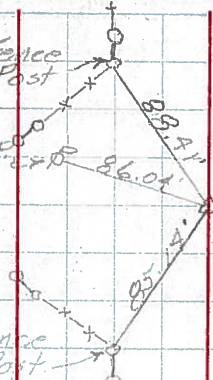
117.

(17)

Shiner in Fence Post

Shiner in P.F. Spk

Shiner in Fence Post



Sta. 221+28.90  
Found R.R. Spk.  
Int. Co. Rd. 16

118.

(17-A)

Shiner in Brace Post

Shiner in Brace Post

54.26'

42.95'

50.26'

x

x

x

x

x

x

x

x

x

Shiner in Brace Post

Shiner in Brace Post

Shiner in 10" Maple

47.00'

46.53'

40.77'

Sta. 234+64.25  
Found R.R. Spk.

Shiner Side 10" Apple

Sta. 247+80.60  
Found R.R. Spk.

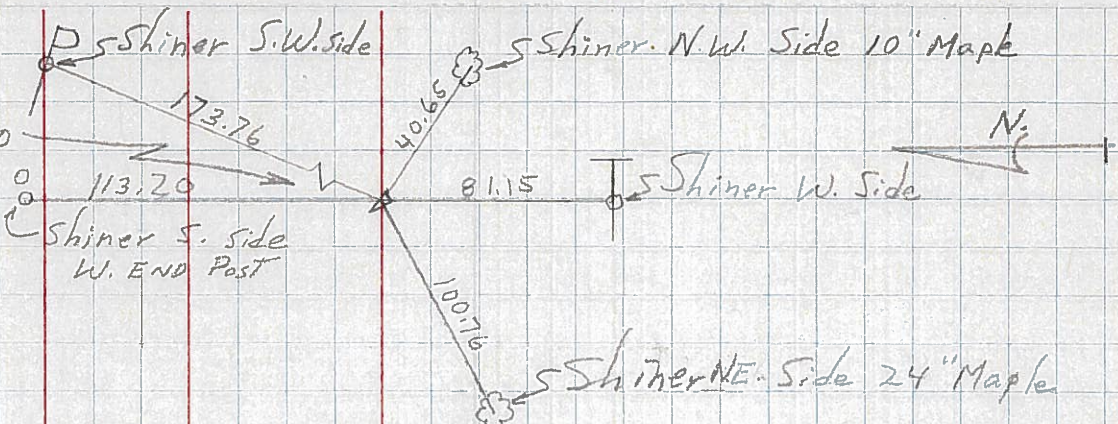
119.

(17-B)

| PERSONNEL   | TITLE                       | PERSONNEL   | TITLE | COUNTY                       | DATE      |
|-------------|-----------------------------|-------------|-------|------------------------------|-----------|
| Louys       |                             |             |       | Wi.                          | 2-24-58   |
|             |                             |             |       | S. R. 6                      | WEATHER   |
|             |                             |             |       | SEC Relocation over Rt. #384 | TEMP. 45° |
| DESCRIPTION | Witnesses to control Points |             |       | JOB NO.                      |           |
|             | LEFT                        | CENTER LINE | RIGHT |                              |           |

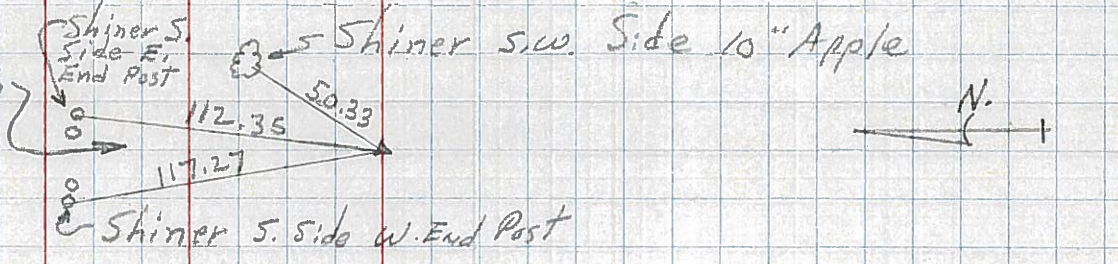
17-B  
119

P.I. - Sta. 247 + 80.60  
 $\Delta = 0^\circ - 00'$   
(EST. R.R. SPK.)

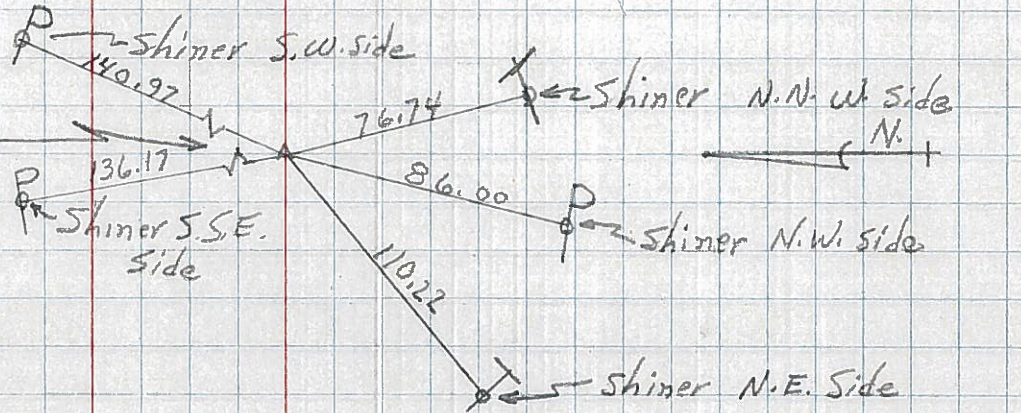


118  
17-A R/W only

P.I. - Sta. 234 + 64.25  
 $\Delta = 0^\circ - 02' \text{ Rt.}$   
(Point is 0.20' Lt. of a str. line between 1/2 Mi. Pts.)  
(Fd. Stone (R.R. SPK.))

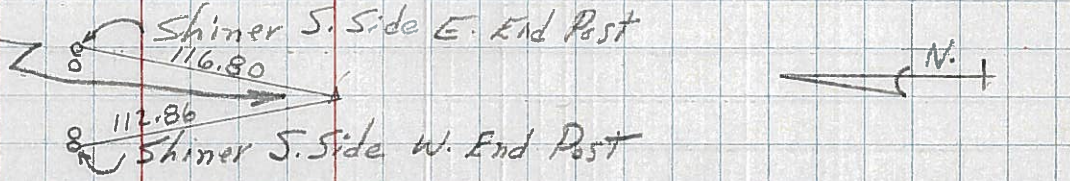


117  
17 P.I. - Sta. 221 + 28.90  
 $\Delta = 0^\circ - 08' \text{ Rt.}$   
(EST. R.R. SPK.)

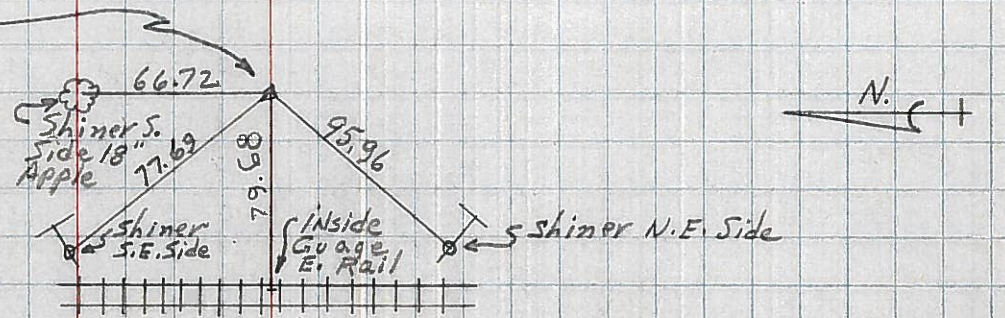


116  
116-C USE For Constr

P.I. - Sta. 204 + 74.26  
 $\Delta = 0^\circ - 12' \text{ Rt.}$   
(Point is 2.48' Lt. of a str. line between 1/2 Mi. Pnts.)  
(Fd. Stone (R.R. SPK.))



115  
P.I. - Sta. 194 + 77.70  
 $\Delta = 0^\circ - 15' \text{ Lt.}$   
(R.R. SPK.)



116-B